

Clarion County Airport (AXQ) is a general aviation airport serving the Clarion County area, which is located approximately 50 miles northeast of Pittsburgh. The airport supports a variety of aviation activity, including search and rescue, military training, flight instruction, gas and pipeline inspections, and skydiving. However, the airport is primarily used for recreational purposes. Aviators fly into the airport to visit the lush surroundings and to spend the weekend fishing, testing their hunting skills, or simply taking in the beautiful autumn leaves. The airport is home to STAT MedEvac, which has 20 employees providing crucial emergency medical services to the surrounding region. The airport also proudly hosts the Civil Air Patrol. Local businesses use the airport to transport executives, customers, and clients, and the Pennsylvania state police helicopter flies out of the airport for traffic and local criminal investigations.



This airport is classified as a Advanced Airport in Pennsylvania's State Aviation System Plan and is eligible to receive federal funding from the FAA.

About the Airport

CITY: Clarion

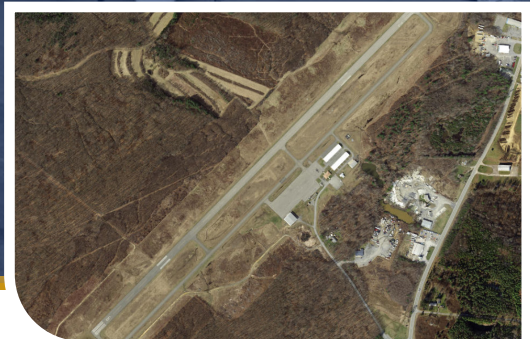
COUNTY: Clarion

OWNERSHIP: Public

PENNDOT DISTRICT: 10

PRIMARY RUNWAY: 6/24, 5,003'

Source: Pennsylvania Spatial Data Access (PASDA), 2022



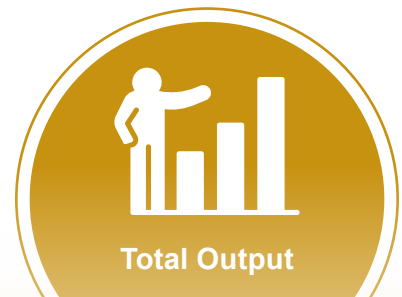
AXQ Economic Impacts



43 JOBS



\$2,149,900



\$5,831,500

Key Airport Activities



**Medical Transport/
Evacuation**



**Aerial/Wildland
Firefighting**



**Search and
Rescue/Civil Air
Patrol**



**Skydiving,
Parachute
Jumping**



**Career Training
and Flight
Instruction**

All impacts shown were calculated for calendar year 2019, representing a typical year. Impacts for calendar year 2020 were also calculated to understand the impacts of COVID-19 on aviation in the state. 2020 impacts can be found in the PA AEIS Technical Report.

Clarion County Airport's Economic Impact



Employment



Payroll



Output

	Employment	Payroll	Output
On-Airport Activity	27	\$1,214,600	\$3,136,200
Commercial Service Visitor Spending	0	\$0	\$0
General Aviation Visitor Spending	1	\$29,800	\$83,300
Total Direct Impacts	28	\$1,244,400	\$3,219,500
Total Multiplier Impacts	15	\$905,500	\$2,612,000
Total Impacts	43	\$2,149,900	\$5,831,500

Note: Totals may not sum due to rounding. Sources: Calculations using IMPLAN, 2019, 2020; Kimley-Horn, 2022.

Economic Impact Categories



Employment:

The total number of persons employed that are associated with business revenues and payroll, regardless of whether they are full-time or part-time.



Payroll:

Total employment compensation including wages and other benefits (e.g., health care insurance payments, retirement contributions, etc.)



Output:

Includes expenditures needed to administer airports, sales of goods and services by airport tenants, budget expenditures by public sector agencies located on airports, cost of capital expenditures, visitor spending in Pennsylvania's hospitality-related sectors, and sales enabled by air cargo services. This is also referred to as "business revenues" or sales.

Direct Impacts: Initial impacts that occur on- and off-airport, such as airport operations, construction, airport tenants, visitor spending, and more.

Multiplier Impacts: Includes "indirect" and "induced" impacts generated when portions of direct revenues are used to purchase goods and services from PA businesses and when workers re-spend their income in the state.

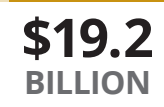
Total Statewide Aviation Impacts

The statewide economic impact of Pennsylvania's airports consists of two major categories: On-Airport Activity and Off-Airport Activity. Together, they account for approximately **\$34.2 billion in economic impact for Pennsylvania.**



On-Airport and Nearby Activity

Impacts related to the activity of airport administration, business tenants, and capital improvements on airports.

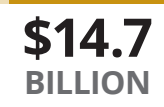


Off-Airport Activity

Impacts related to out-of-state visitor spending at both commercial service and general aviation airports.

✈️ Commercial Service Visitor Spending

Impacts related to spending by out-of-state visitors arriving to stay in Pennsylvania via the state's commercial service airports.



✚ General Aviation Visitor Spending

Impacts related to spending by out-of-state visitors arriving to stay in Pennsylvania via the Commonwealth's general aviation airports.



Total Output of Other Aviation-Related Impacts in Pennsylvania

Off-Airport Aerospace Manufacturing

\$8.7 BILLION

Off-Airport Air Cargo

\$1.1 BILLION

Off-Airport Private Hospital Helicopters

\$150 MILLION