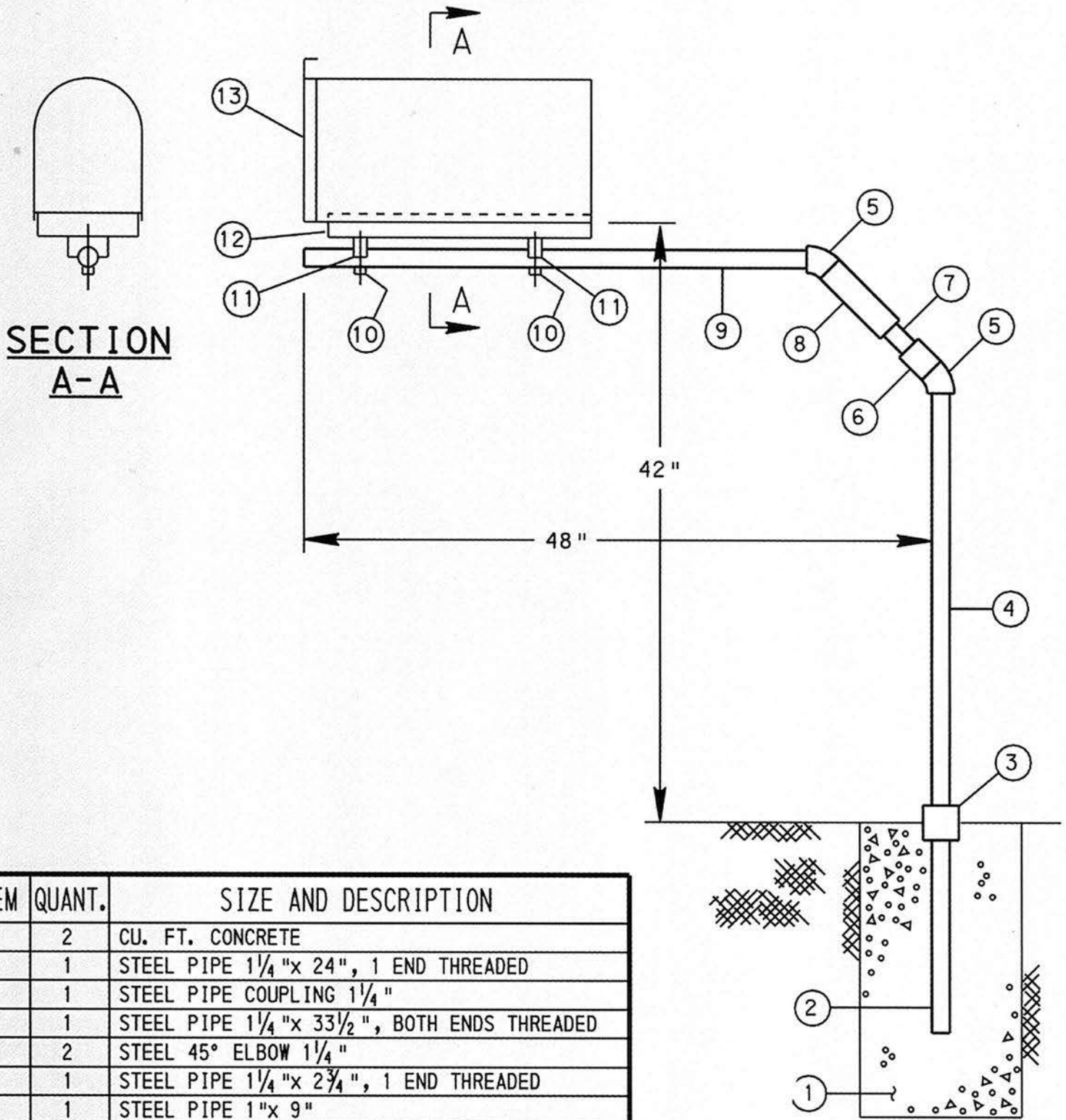


# CANTILEVER MAILBOX SUPPORT



ITEM	QUANT.	SIZE AND DESCRIPTION
1	2	CU. FT. CONCRETE
2	1	STEEL PIPE 1 1/4 "x 24" , 1 END THREADED
3	1	STEEL PIPE COUPLING 1 1/4 "
4	1	STEEL PIPE 1 1/4 "x 33 1/2 " , BOTH ENDS THREADED
5	2	STEEL 45° ELBOW 1 1/4 "
6	1	STEEL PIPE 1 1/4 "x 2 3/4 " , 1 END THREADED
7	1	STEEL PIPE 1 "x 9"
8	1	STEEL PIPE 1 1/4 "x 5" , 1 END THREADED
9	1	STEEL PIPE 1 1/4 "x 42 1/2 " , 1 END THREADED
10	2	LAG BOLTS 1/4 "x 3 1/2 " LONG
11	2	1 1/4 " PIPE CLAMPS (TAILPIPE TYPE)
12	1	2 "x 8 "x 20 " WOOD BOARD
13	1	MAILBOX (STANDARD SIZE)