



# PUBLIC MEETING

June 23, 2022

## PROJECT DESCRIPTION

The intent of this project is to complete Corridor N of the Appalachian Development Highway System (ADHS) through improvements to the section of US 219 between the terminus of the four-lane highway section south of Meyersdale, Pennsylvania and the north end of the newly constructed I-68/US 219 Interchange in Garrett County, Maryland. The project will supplement the interstate system by connecting I-68 and the Pennsylvania Turnpike (I-76), connecting the study area portion of Appalachia to the interstate system, and improving mobility for motorists and freight along US 219. The project will enhance access between existing populations to destinations and markets in the region, generating economic opportunity in previously isolated areas.



## PROJECT PURPOSE

The purpose of the US 219 Section 050 from Meyersdale to Old Salisbury Road Project is to complete Corridor N of the Appalachian Development Highway System, to improve the system linkage in the region, provide safe and efficient access for motorists traveling on US 219, and provide transportation infrastructure to support economic opportunities within the Appalachian Region.

## PROJECT NEEDS

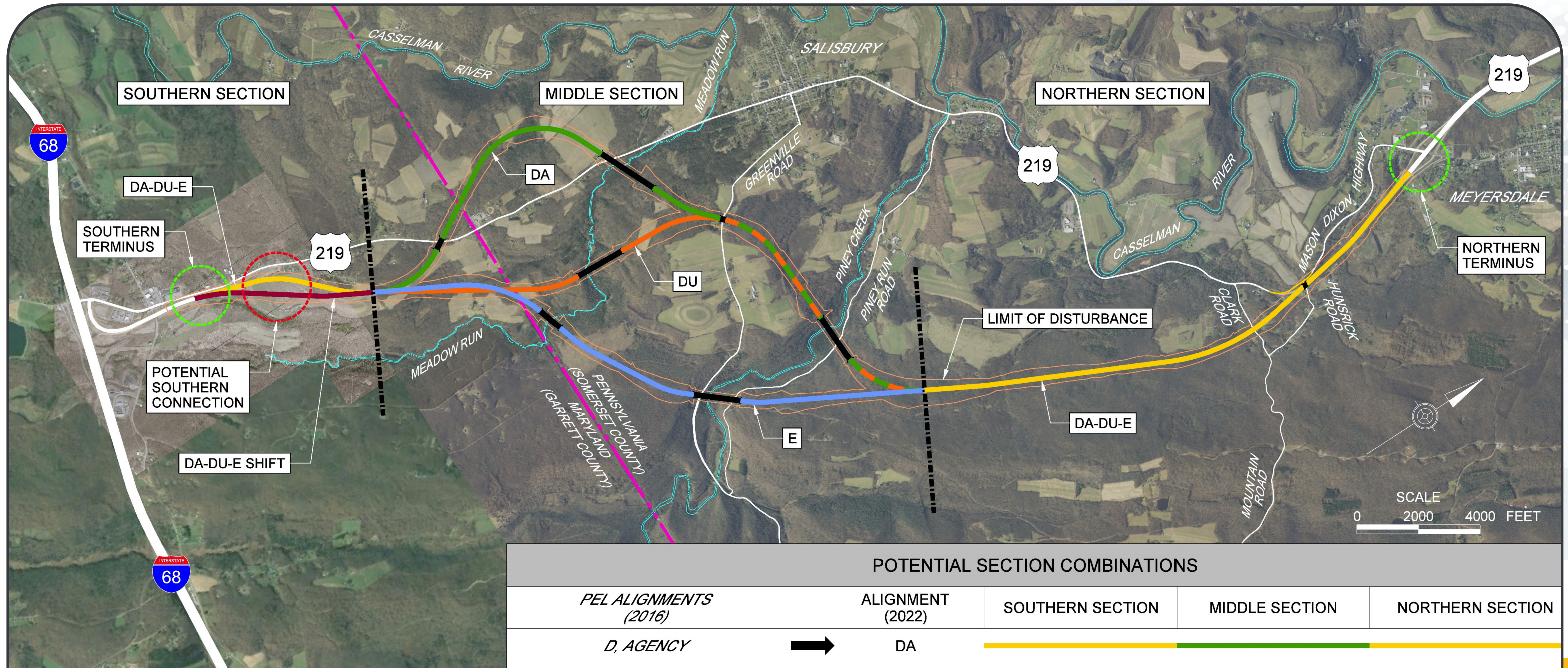
- 1 The existing US 219 roadway network does not provide efficient mobility for trucks
- 2 There are numerous roadway and geometric deficiencies present along the existing US 219 alignment which do not meet current design criteria and contribute to slower travel speeds through the corridor
- 3 Existing US 219 does not provide the infrastructure needed to access the surrounding municipalities along with labor and business markets and is a contributing factor in limiting economic opportunity to the Appalachian Region



## CONTACT

Thank you for attending the meeting. Please feel free to contact us if you have any questions. We look forward to hearing your input. Please send comments or questions to Nicki Donahoe, P.E. PennDOT project manager at 814-317-1650 or [ndonahoe@pa.gov](mailto:ndonahoe@pa.gov).





**LEGEND**

- SECTION BREAK
- MARYLAND / PENNSYLVANIA STATE LINE
- PROPOSED BRIDGE

POTENTIAL SECTION COMBINATIONS					
PEL ALIGNMENTS (2016)		ALIGNMENT (2022)	SOUTHERN SECTION	MIDDLE SECTION	NORTHERN SECTION
<i>D, AGENCY</i>		DA			
<i>D, AGENCY, E SHIFT</i>		DA SHIFT			
<i>D, USFWS, USACOE2</i>		DU			
<i>D, USFWS, USACOE2, E SHIFT</i>		DU SHIFT			
<i>E</i>		E			
<i>E SHIFT</i>		E SHIFT			



## SCHEDULE

- 1 The Environmental Impact Statement (EIS) process begins with the publication of a Notice of Intent (NOI) package, stating the intent to prepare an EIS for a particular proposal. The NOI is published in the federal register by the lead federal agency. In this case, the lead federal agency is the Federal Highway Administration (FHWA).



\*Contingent upon funding

In 2019, PennDOT initiated a safety study on the existing six-mile corridor between the PA/MD state line and Meyersdale, PA. The study reviewed existing conditions and recommended projects to improve safety and mobility along the existing US 219. The final safety study was completed in January 2020 and recommended ten projects totaling \$20 million dollars to be considered which included the five projects below:

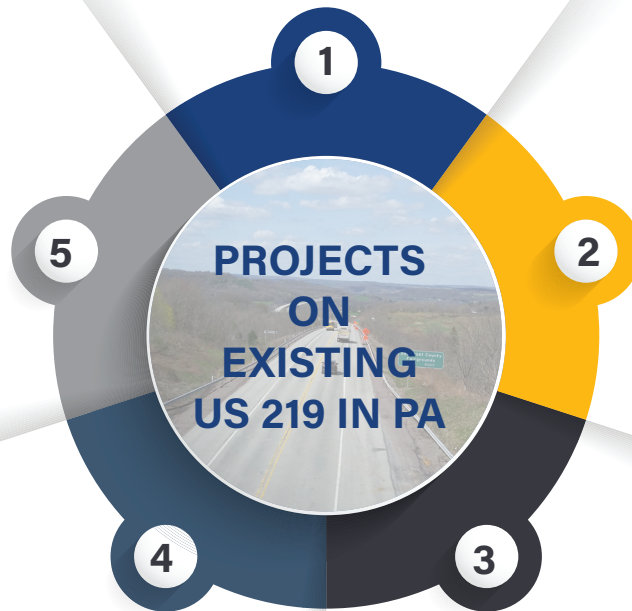
**An emergency project,**  
the Boynton Slide was  
completed in 2019

**Four projects along  
the corridor** are  
currently in design that  
address each short,  
medium and long term  
project identified in the  
2019 Safety Study

**Five mid-term  
projects** – guide  
rail upgrades, 3R  
improvements,  
intersection sight  
distance improvements,  
and intersection and  
curve improvements in  
Boynton

**Three short term projects** –  
sign upgrades, localized drainage  
improvements, traffic signal upgrade

**One long-term project** –  
Casselman Curve Realignment



For more information on the project including the history of the project, planned work, and future meeting dates, please visit the website:

[penndot.pa.gov/US219meyersdalesouth](https://penndot.pa.gov/US219meyersdalesouth)