



Pennsylvania Department of Transportation District 8-0

US 222 & US 30 INTERCHANGE IMPROVEMENT PROJECT



Public Plans Display



September 25, 2019

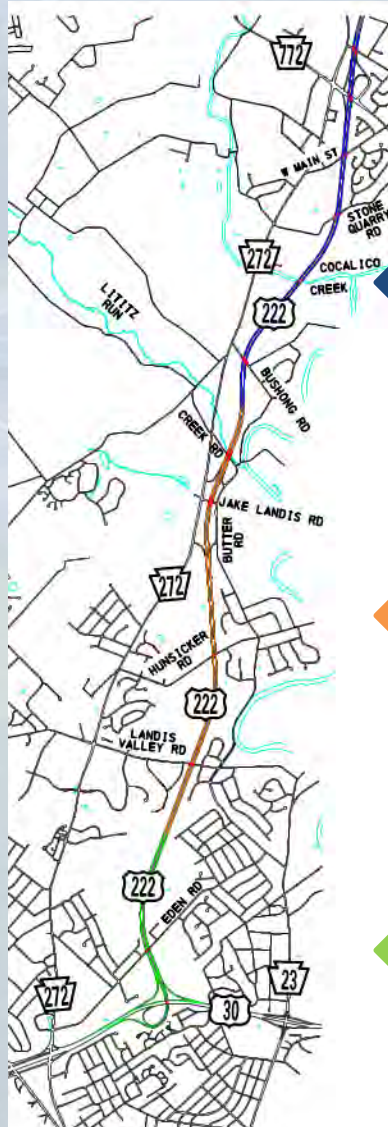


Project Background

- 2015/2016 Study Phase
- Stakeholder Meetings
- Preferred Solutions



SR222 Reconstruction Project



← Section 072 Project (future project)

← Section 071 Project (future project)

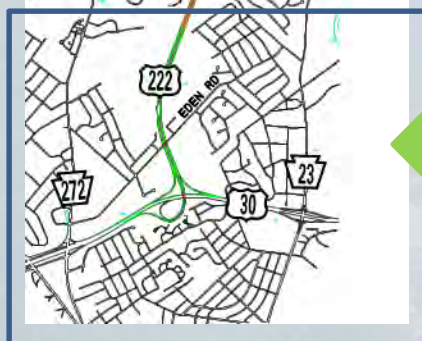
← Section 059 Project (current project)

SR222 Reconstruction Project



Section 059 Project

- US30 to south of Landis Valley Road
- Conversion of US222 to a 6-lane roadway
- Improvements to US30 merge areas between US222 and Oregon Pike



SR222 Reconstruction Project



Section 071 Project

- South of Landis Valley Road to North of Jake Landis Interchange
- Conversion of US222 to a 6-lane roadway
- Lowering of US222 at overhead Bridges

SR222 Reconstruction Project



Section 072 Project

- North of Jake Landis Interchange to North of PA772 Interchange
- Conversion of US222 to a 6-lane roadway
- Lowering of US222 at overhead Bridges



Purpose & Need

Purpose

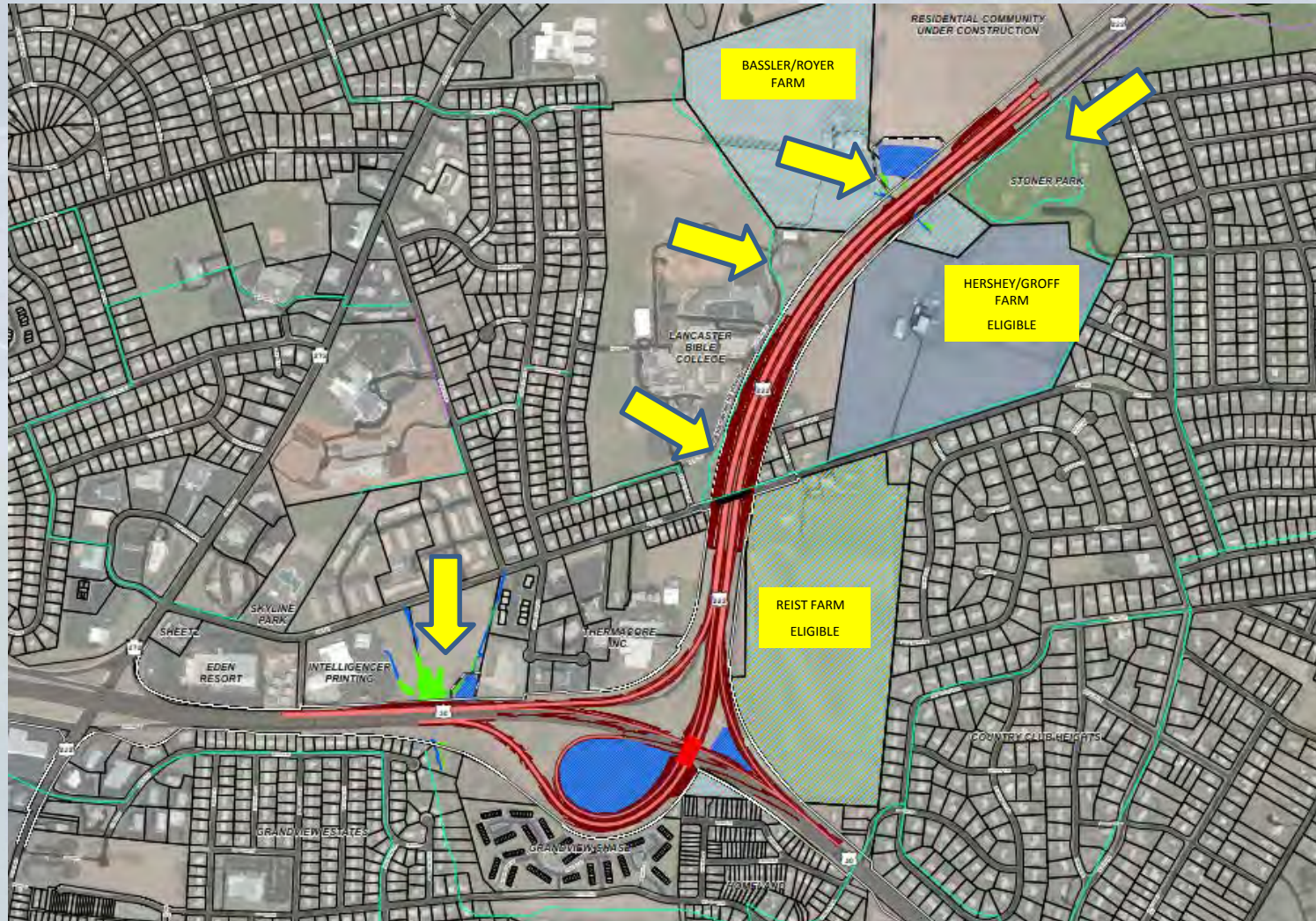
- Reduce traffic congestion and travel times, improve safety and mobility

Needs

- US222 pavement nearing the end of its life expectancy
- High traffic volumes causing congestion
- Substandard vertical clearances on US222
- Crash rates higher than the statewide average



Section 059 Environmental Resources





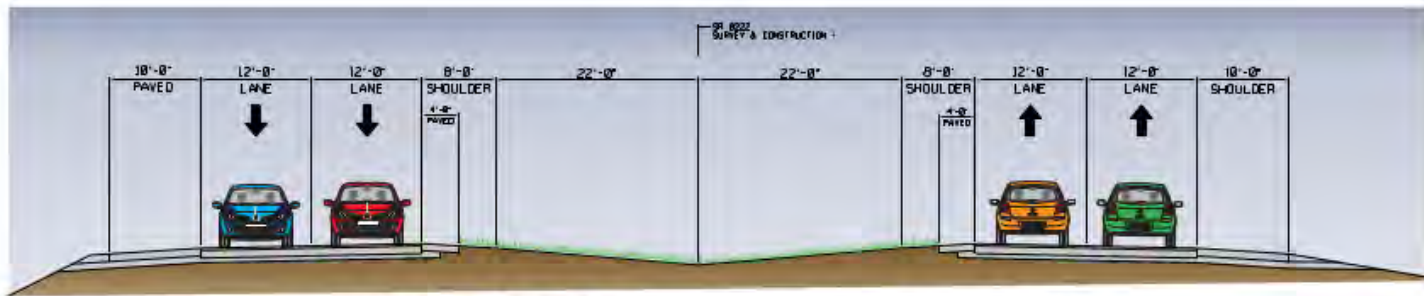
Section 059 Proposed Improvements



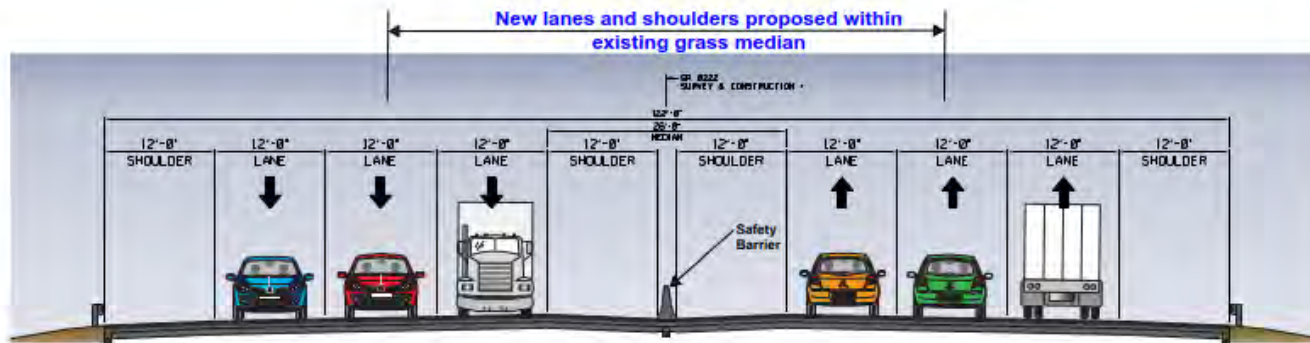


Section 059 Proposed Improvements

US222 TYPICAL SECTION



Existing US222 Four-Lane Roadway Section
(128' wide)



Converted US222 Six-Lane Roadway Section
(122' wide)





Section 059 Proposed Improvements



Existing Eastbound US30 Weave



Section 059 Proposed Improvements



Proposed Eastbound US30 Weave



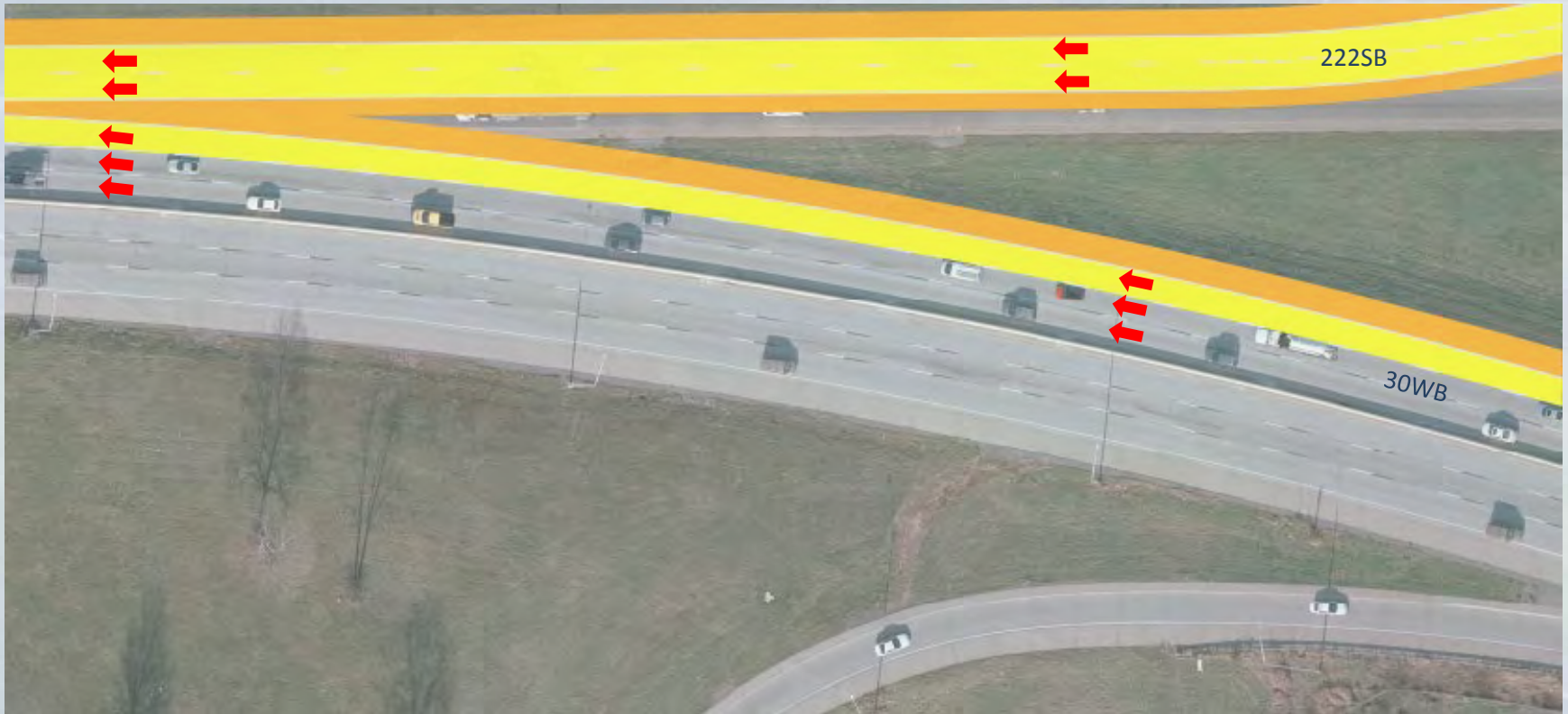
Section 059 Proposed Improvements



Existing Westbound US30 Weave



Section 059 Proposed Improvements



Proposed Westbound US30 Weave



Anticipated Traffic Control

US222

- 2 lanes of traffic in each direction will be maintained

US30

- 2 lanes of traffic in each direction will be maintained

Interchange ramps

- All ramp movements will remain open to traffic

Eden Road

- 1 lane of traffic in each direction will be maintained
- Sidewalk access will be maintained



Please see public display stations
for further information or if you
have any questions.

This Presentation will replay
momentarily.