



Sellers Ave. Bridge Replacement over AMTRAK

- Progress Update (Sept. 12, 2023)

ECMS 15306

Ridley Park Borough, Delaware
County

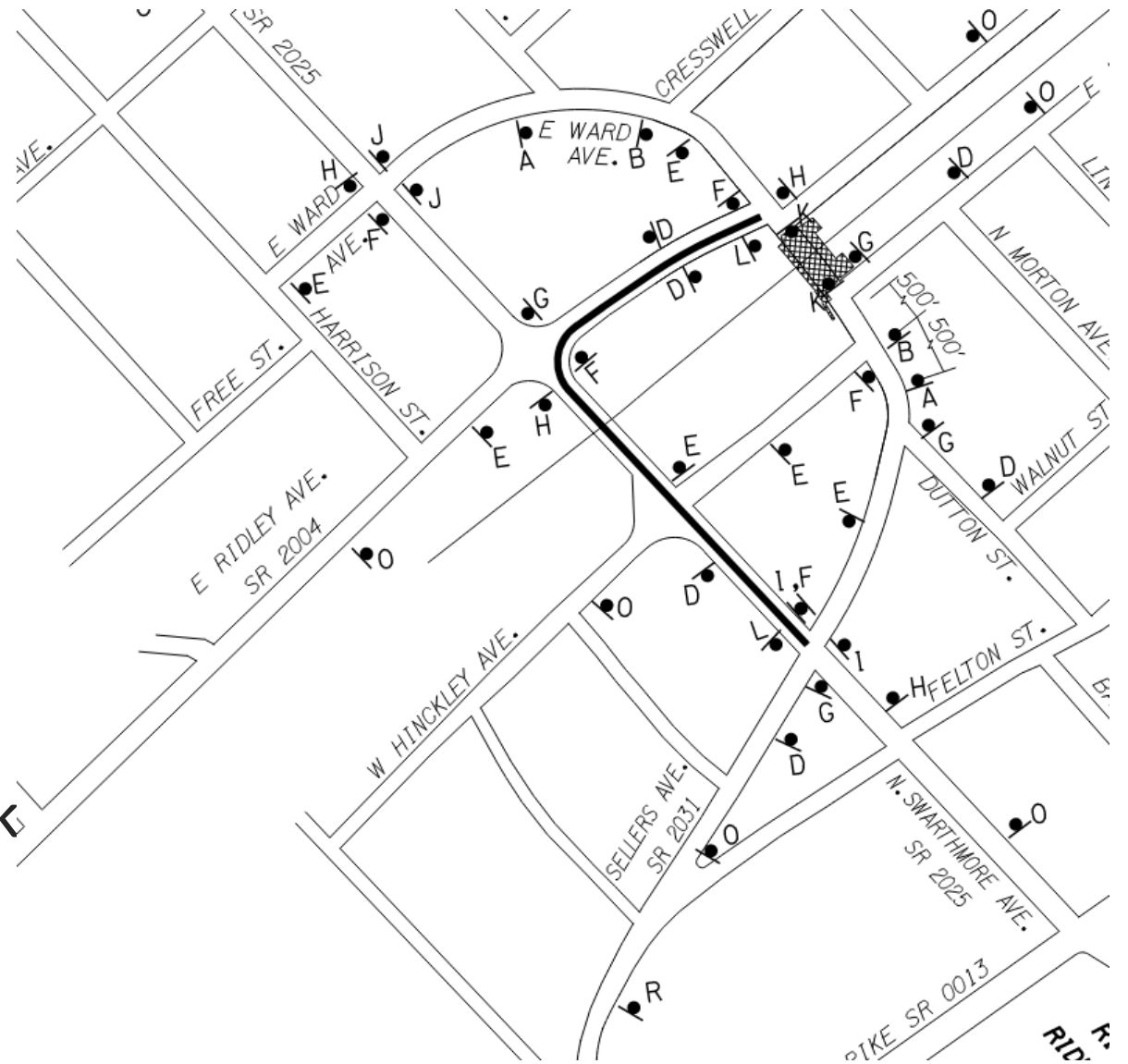


pennsylvania

DEPARTMENT OF TRANSPORTATION

Traffic will remain detoured over the Swarthmore Ave. Bridge for the duration of the Project.

Additional Maintenance and Protection of Traffic (MPT) signage to be added next week





pennsylvania

DEPARTMENT OF TRANSPORTATION

Contract Awarded
Notice to Proceed

March 14, 2023
April 10, 2023

Bridge Open
Project Completion (planting season)

July 1, 2026
June 30, 2027

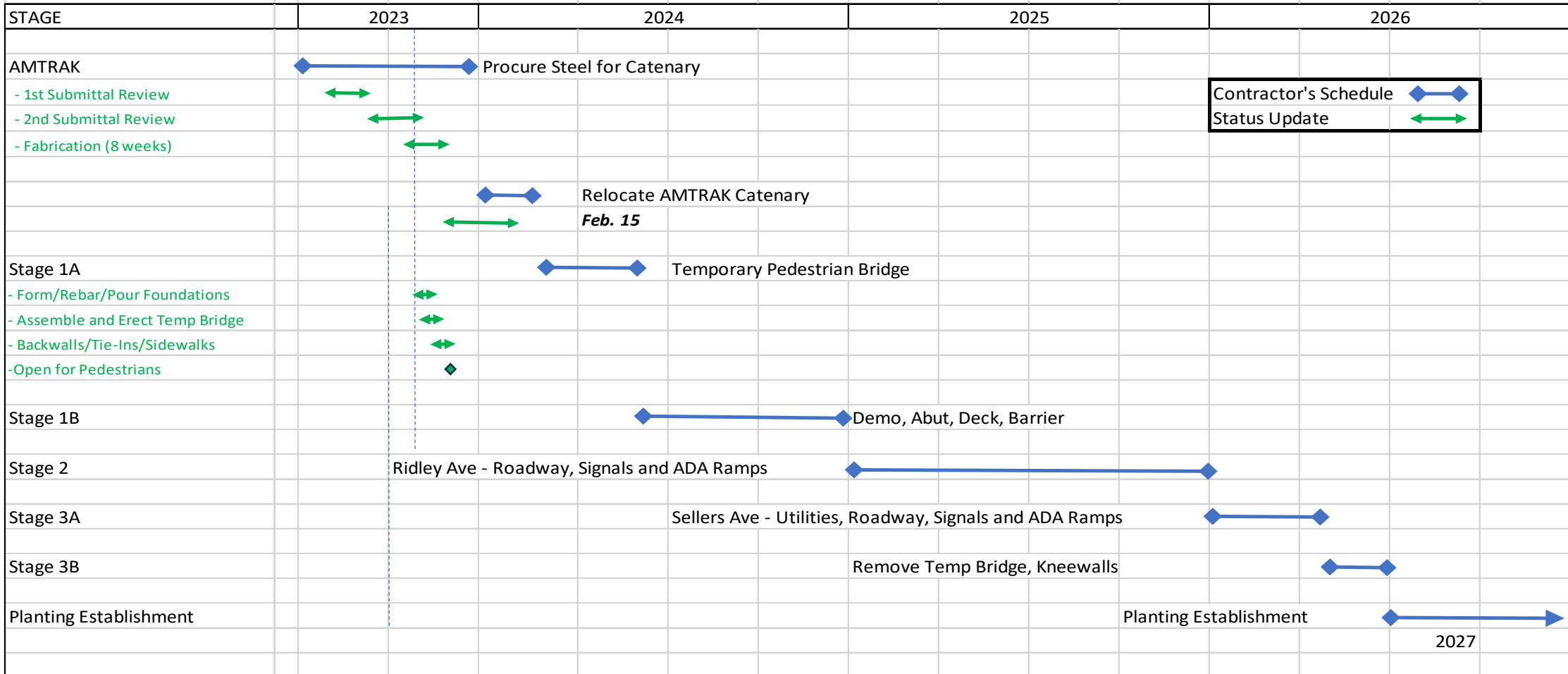


ORIGINAL

STAGE	2023	2024	2025	2026
AMTRAK	Procure Steel for Catenary			
		Relocate AMTRAK Catenary		
Stage 1A		Temporary Pedestrian Bridge		
Stage 1B		Demo, Abut, Deck, Barrier		
Stage 2	Ridley Ave - Roadway, Signals and ADA Ramps			
Stage 3A		Sellers Ave - Utilities, Roadway, Signals and ADA Ramps		
Stage 3B			Remove Temp Bridge, Kneewalls	
Planting Establishment			Planting Establishment	
				2027

Sellers Ave. Bridge Replacement

Designers Schedule vs. Update No. 1





pennsylvania

DEPARTMENT OF TRANSPORTATION

Benefits of New Location

- Opens Pedestrian Traffic 8.5 Months Earlier
- Safer Conditions for the Public
- Easier Access to Downtown

Open Pedestrian Bridge

Original

June 17, 2024

New

October 2023

Time Savings

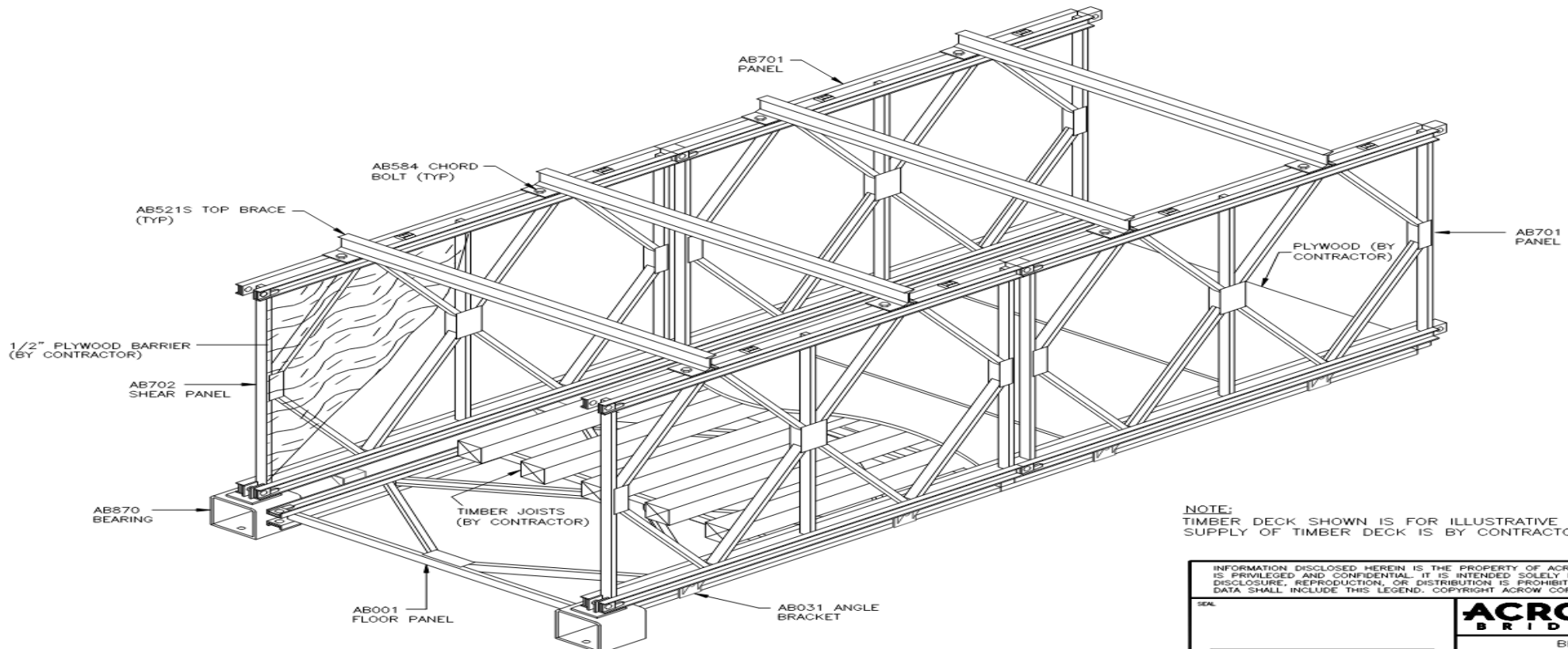
8 ½ Months



pennsylvania

DEPARTMENT OF TRANSPORTATION

Temporary Pedestrian Bridge (Acrow)– Schematic (ADA Compliant)





pennsylvania

DEPARTMENT OF TRANSPORTATION

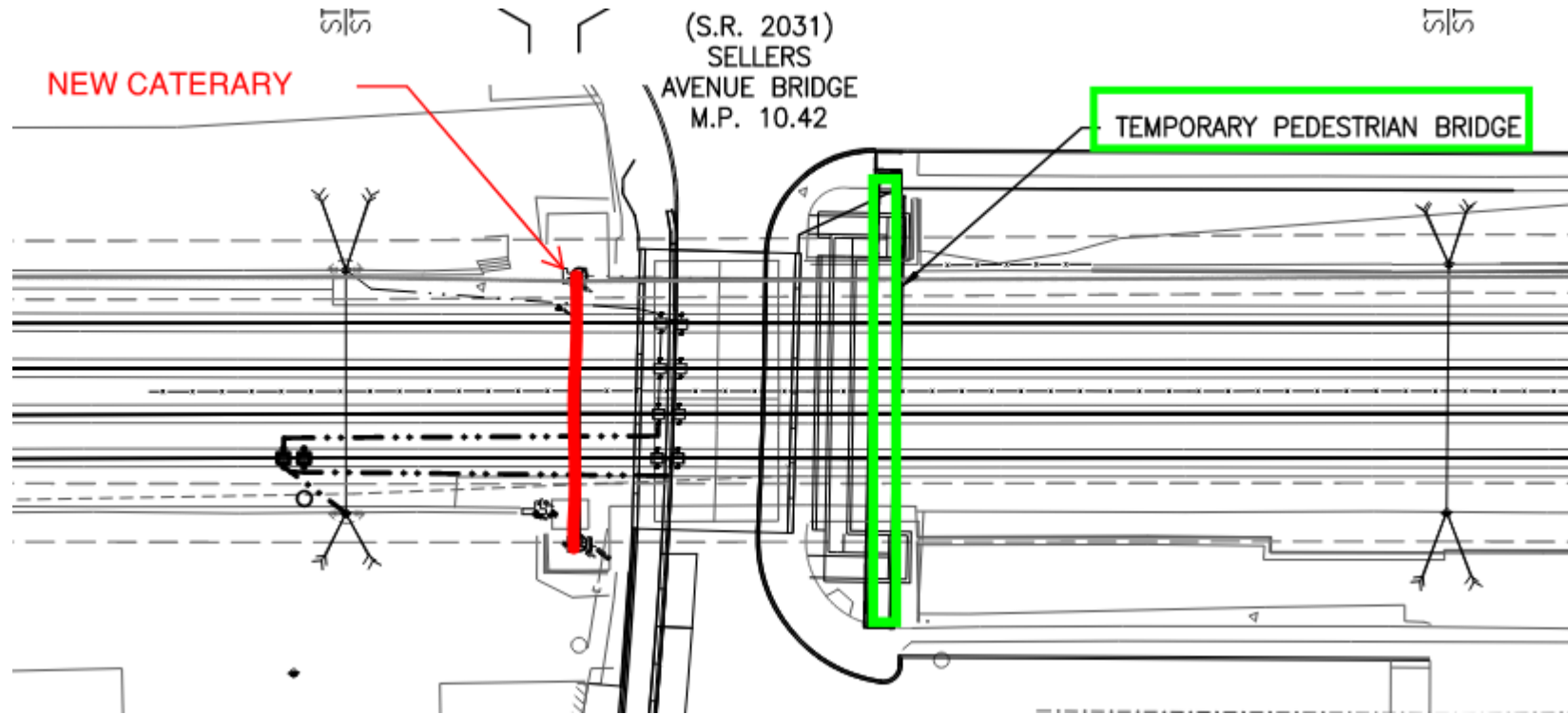
Example of Temporary Pedestrian Bridge (Acrow)





ORIGINAL

AMTRAK (2023)



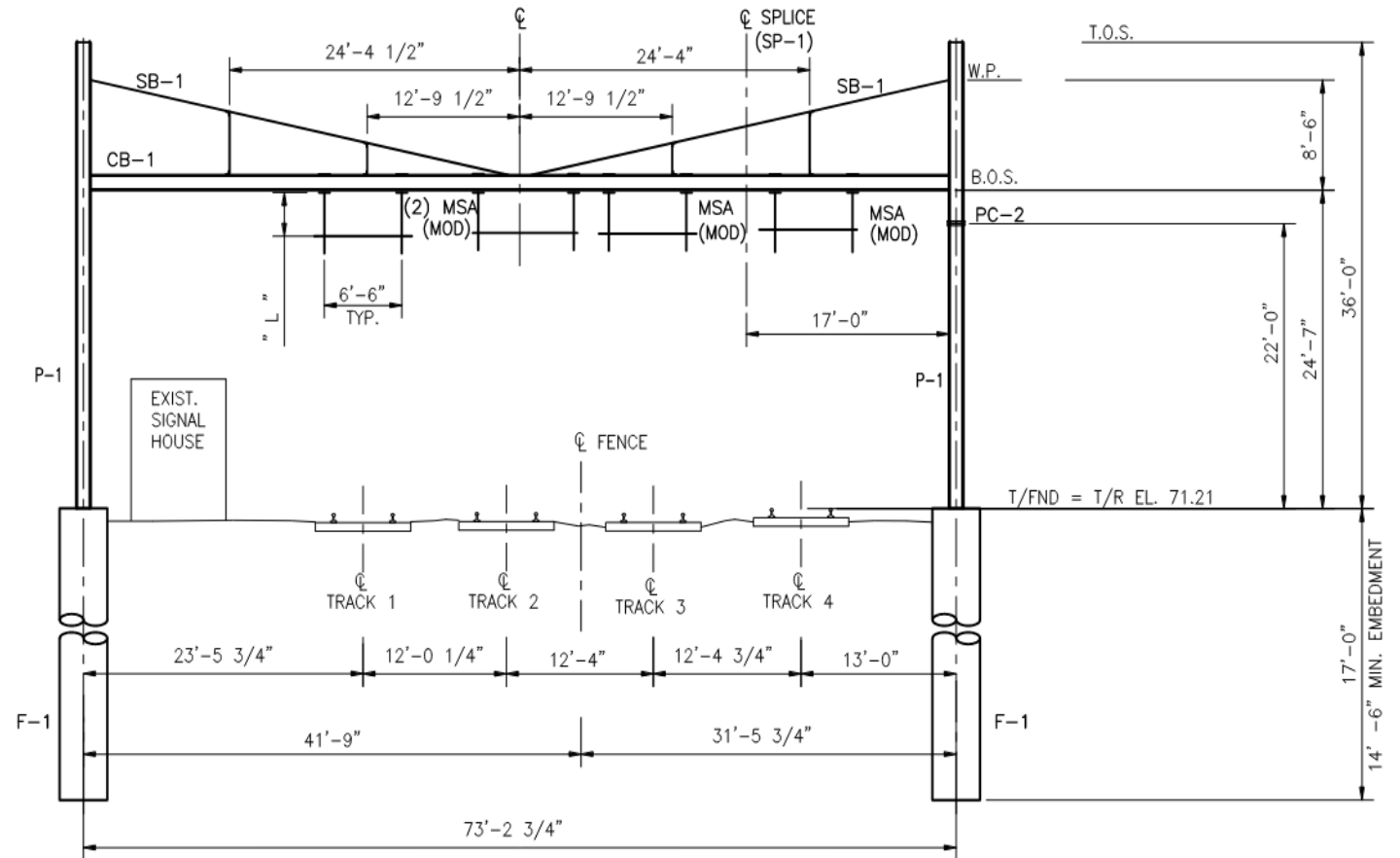


pennsylvania

DEPARTMENT OF TRANSPORTATION

AMTRAK (2023)

- Shielding
- (2) 48" dia. Caissons
17' deep
- Fabricate and Erect
new catenary
- Install new AMTRAK
power hardware
- Re-route power and
remove old from
bridge



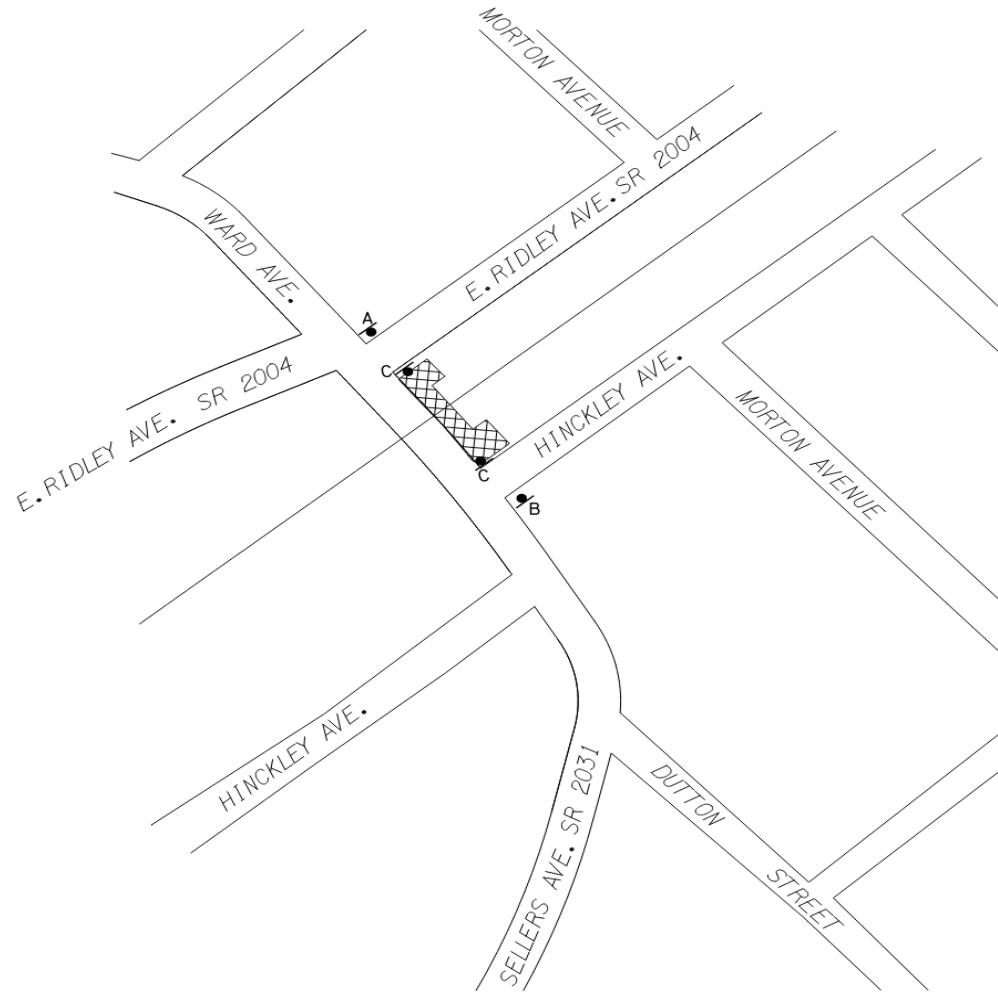


pennsylvania

DEPARTMENT OF TRANSPORTATION

Stage 1A (1st Half 2024)

- Temporary Pedestrian Bridge to be relocated
- 5' wide and 42" handrails
- Utilities to be temporarily relocated (Aqua and Verizon)



PEDESTRIAN DETOUR
STAGE 1A