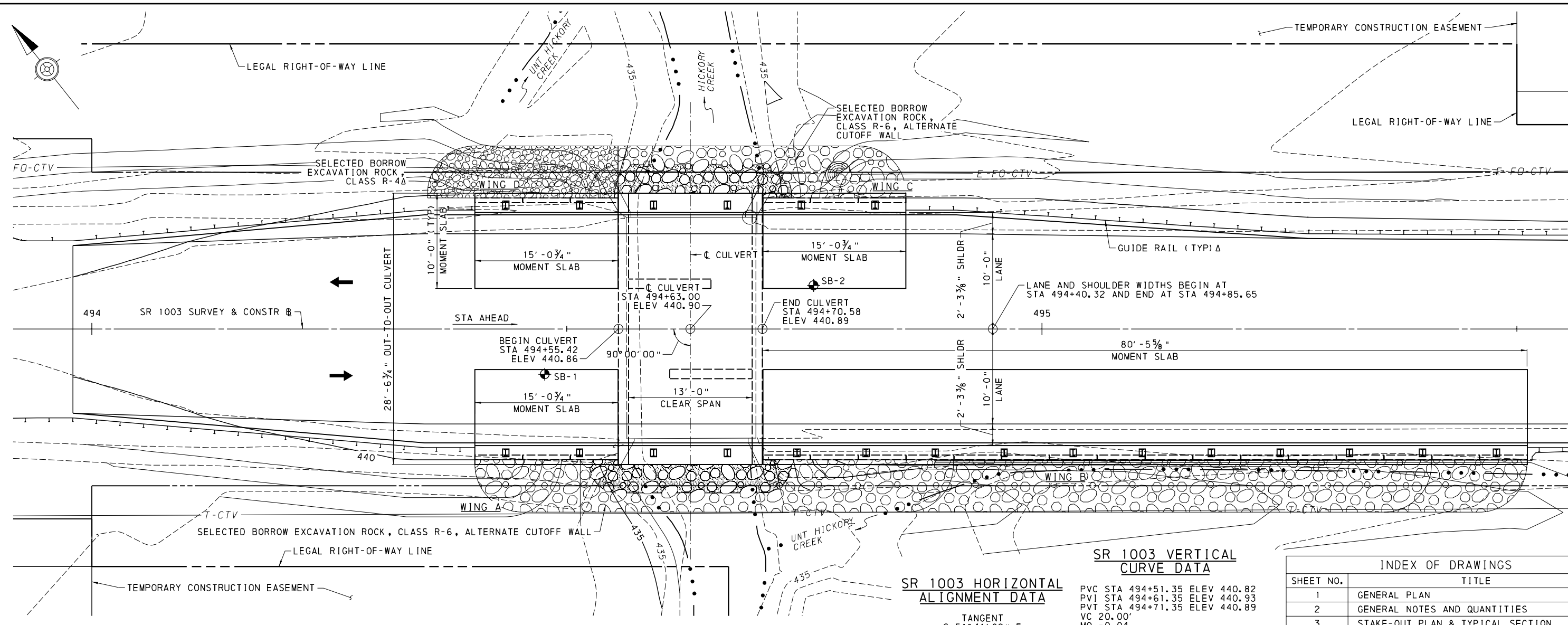


FILE NAME: P:\16004\NO 4 SR 1003\CADD\Deliverable\Structures\3-FINAL\SR1003 - Final.dgn
 DATE: 1/5/2023
 DES: DJM | DES CKD: ZLW | DWG: ZLW | DWG CKD: DJM



SR 1003 HORIZONTAL ALIGNMENT DATA

TANGENT
 S 51°41'09" E

SR 1003 VERTICAL CURVE DATA

PVC STA 494+51.35 ELEV 440.82
 PVI STA 494+61.35 ELEV 440.93
 PVT STA 494+71.35 ELEV 440.89
 VC 20.00'
 MO -0.04
 SSD 722'
 1.07% -0.45%

BORING LOCATIONS

BORING	STATION	OFFSET
SB-1	494+47.6	4.8' RT
SB-2	494+75.9	4.6' LT

LEGEND

- DIRECTION OF TRAFFIC
- PROPOSED BORING LOCATION
- EXISTING CONTOUR LINE (1FT)
- PROPOSED CONTOUR LINE (1FT)
- ROADWAY ITEM

INDEX OF DRAWINGS	
SHEET NO.	TITLE
1	GENERAL PLAN
2	GENERAL NOTES AND QUANTITIES
3	STAKE-OUT PLAN & TYPICAL SECTION
4	CULVERT ELEVATION
5	CULVERT AND BAFFLE PLAN
6	PRECAST CULVERT DETAILS
7	BARRIER DETAILS
8	DISTRIBUTION SLAB DETAILS
10	MOMENT SLAB LAYOUT PLAN
11	MOMENT SLAB DETAILS
12	BAR SCHEDULE
13-XX	CORE BORINGS

HYDRAULIC DATA

DRAINAGE AREA: 0.60 SQ. MI.

FREQUENCY	MAGNITUDE	PROPOSED		EXISTING	
		ELEVATION	VELOCITY	ELEVATION	VELOCITY
25 YEAR FLOOD-DESIGN	935 CFS	440.53	3.2 FT/S	440.66	3.1 FT/S
100 YEAR FLOOD	1517 CFS	441.12	2.9 FT/S	441.15	2.9 FT/S

BAFFLE DESIGN BASED ON A NORMAL AVERAGE STREAM WIDTH OF 12.7'
 OPEN AREA: 60.0 SF (EXISTING) 66.1 SF (PROPOSED)

NOTES

- SR 1003 SEGMENT & OFFSET INCREASES FROM SOUTH TO NORTH. SR 1003 SURVEY & CONSTR # INCREASES FROM NORTH TO SOUTH.
- FOR SUPPLEMENTAL DRAWINGS SEE SHEET 2.

NTM Engineering, Inc.

130 WEST CHURCH ST., SUITE 200
 DILLSBURG, PA 17019
 PHONE 717-432-4425
 FAX 717-432-4426

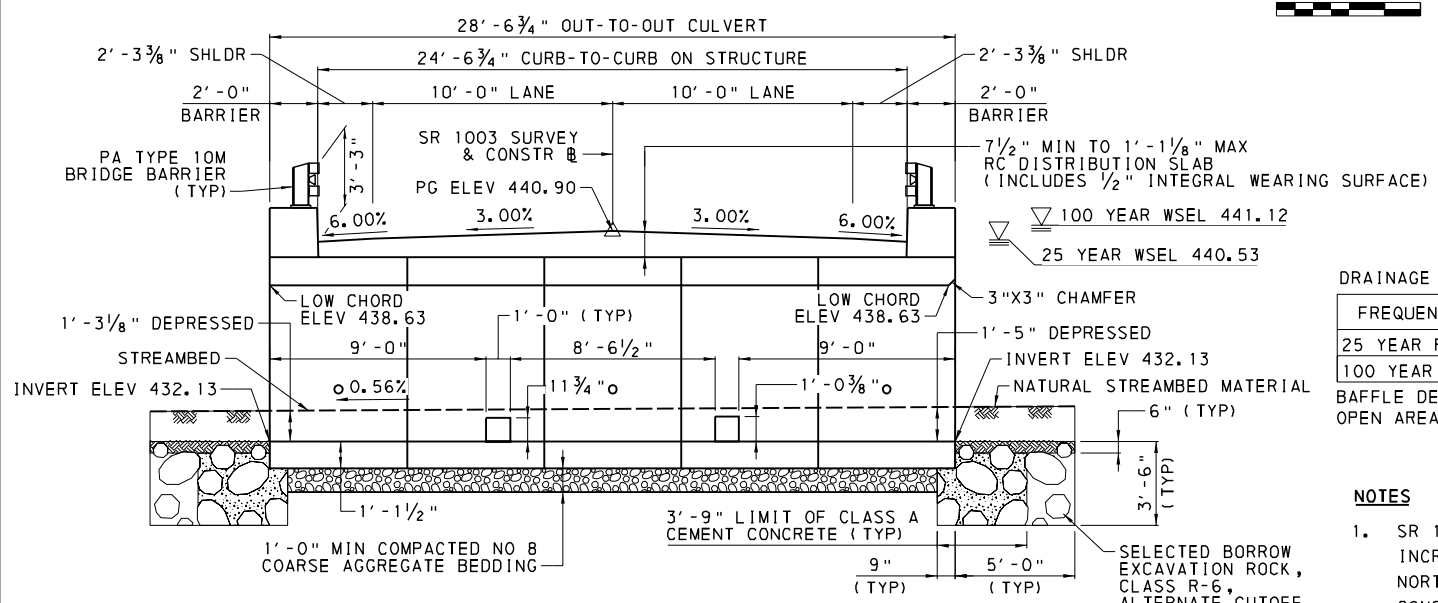
SR 1003 PREVIOUSLY KNOWN AS LR 09060
 BMS STR ID: 09-1003-0180-0000 MPMS/ECMS PROJ: 102320 BRKEY: 7105

COMMONWEALTH OF PENNSYLVANIA
 DEPARTMENT OF TRANSPORTATION

BUCKS COUNTY
SR 1003, SECTION HBP
 SEGMENT 0180 OFFSET 0000
 SR 1003-HBP STA 494+63.00
 OVER HICKORY CREEK

13' - 0" X 6' - 6" PRECAST BOX CULVERT
GENERAL PLAN

RECOMMENDED _____	SHEET 1 OF 12
DISTRICT BRIDGE ENGINEER _____	S-38309



SECTION ALONG CULVERT
 (LOOKING AHEAD STATIONS)

