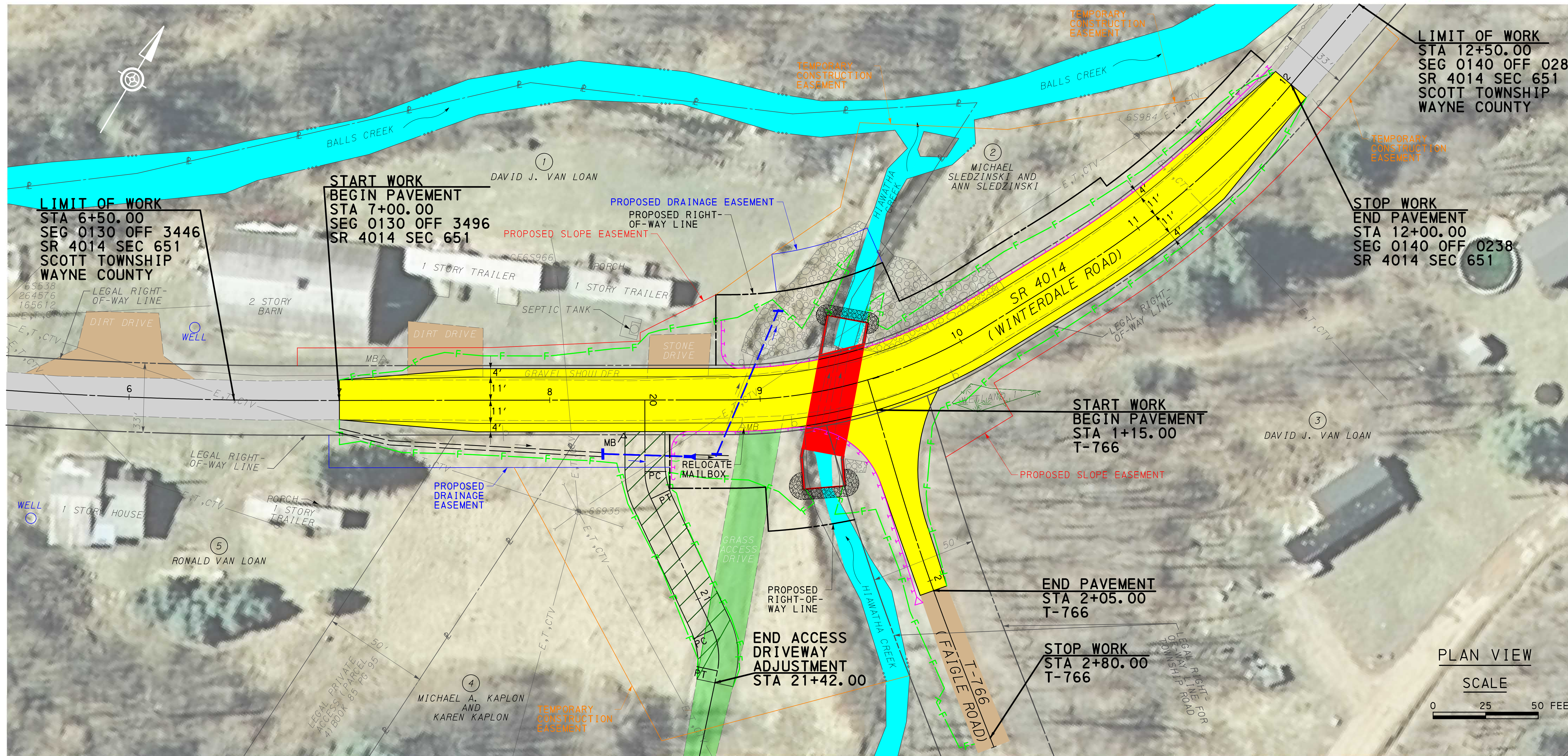
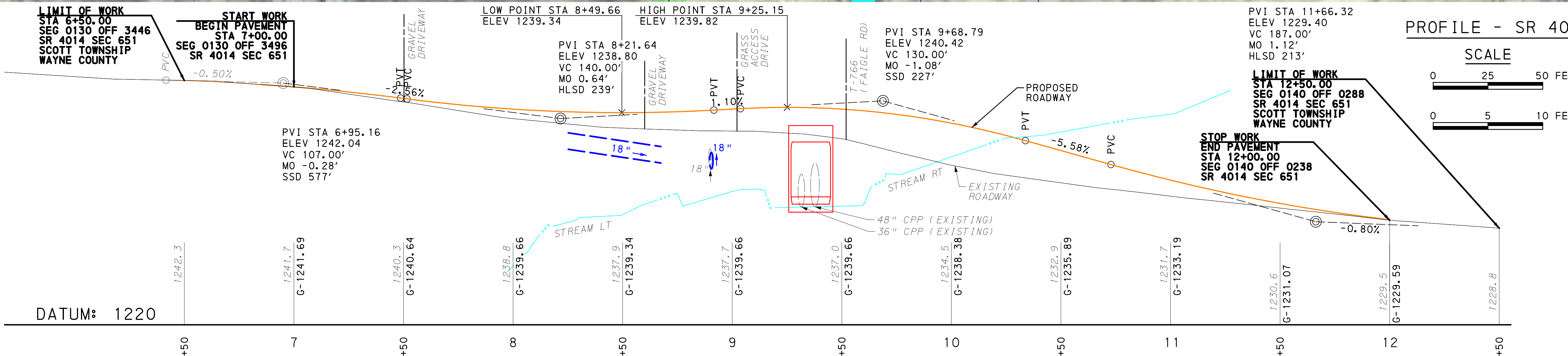


SR 4014 SECTION 651 BRIDGE REPLACEMENT PROJECT SCOTT TOWNSHIP, WAYNE COUNTY

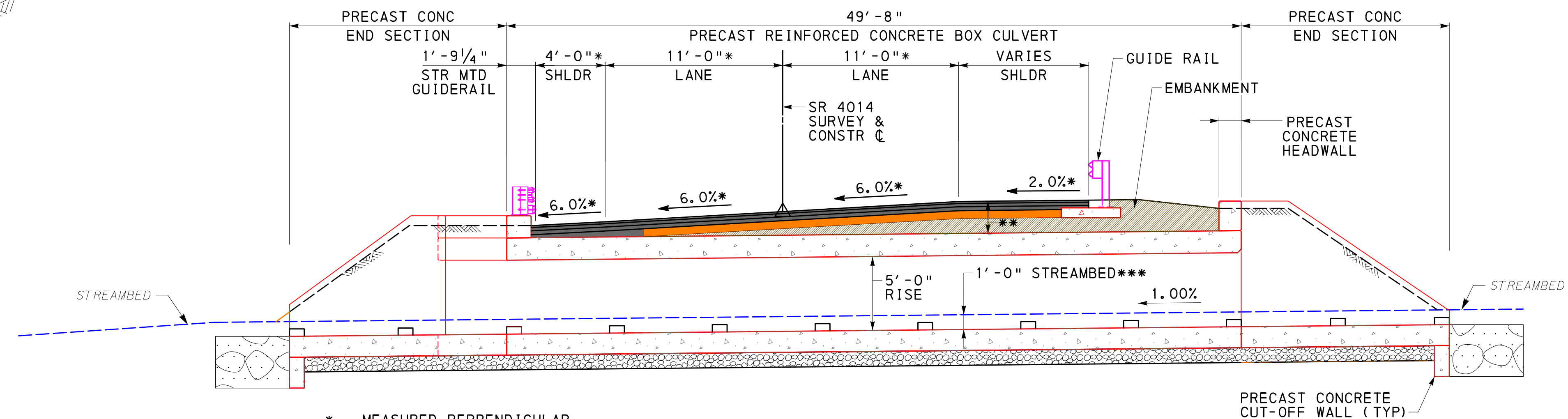
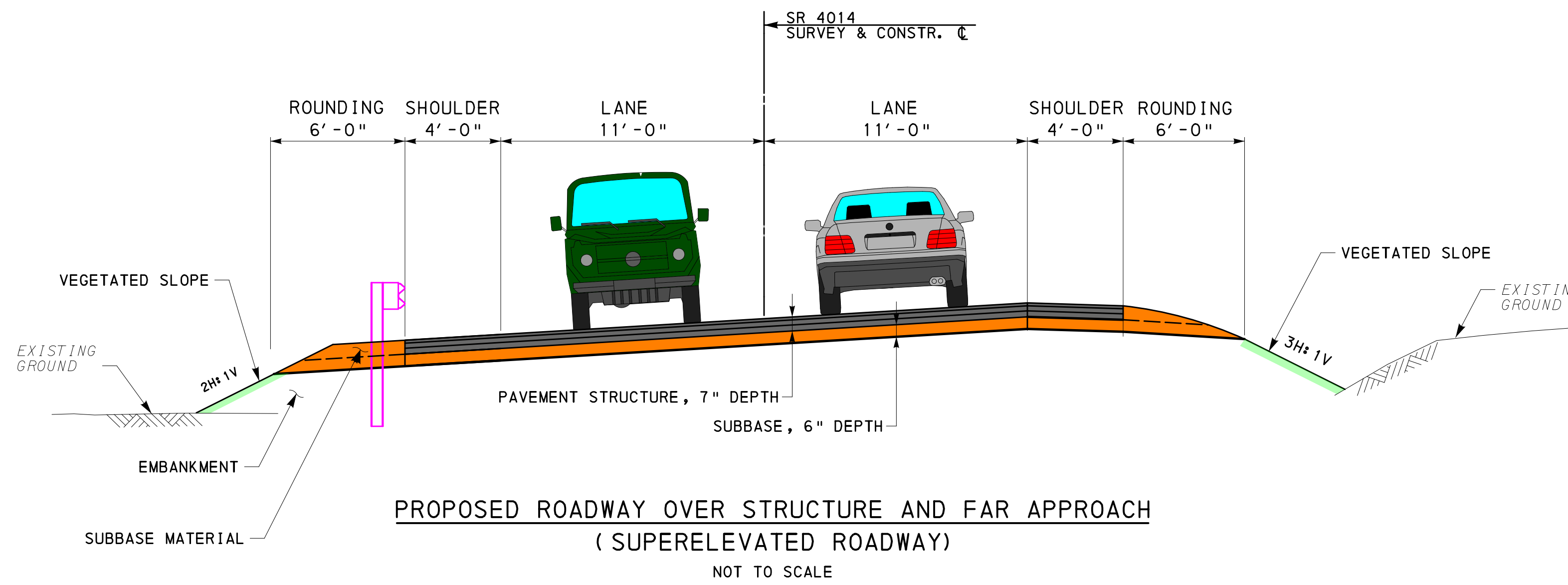
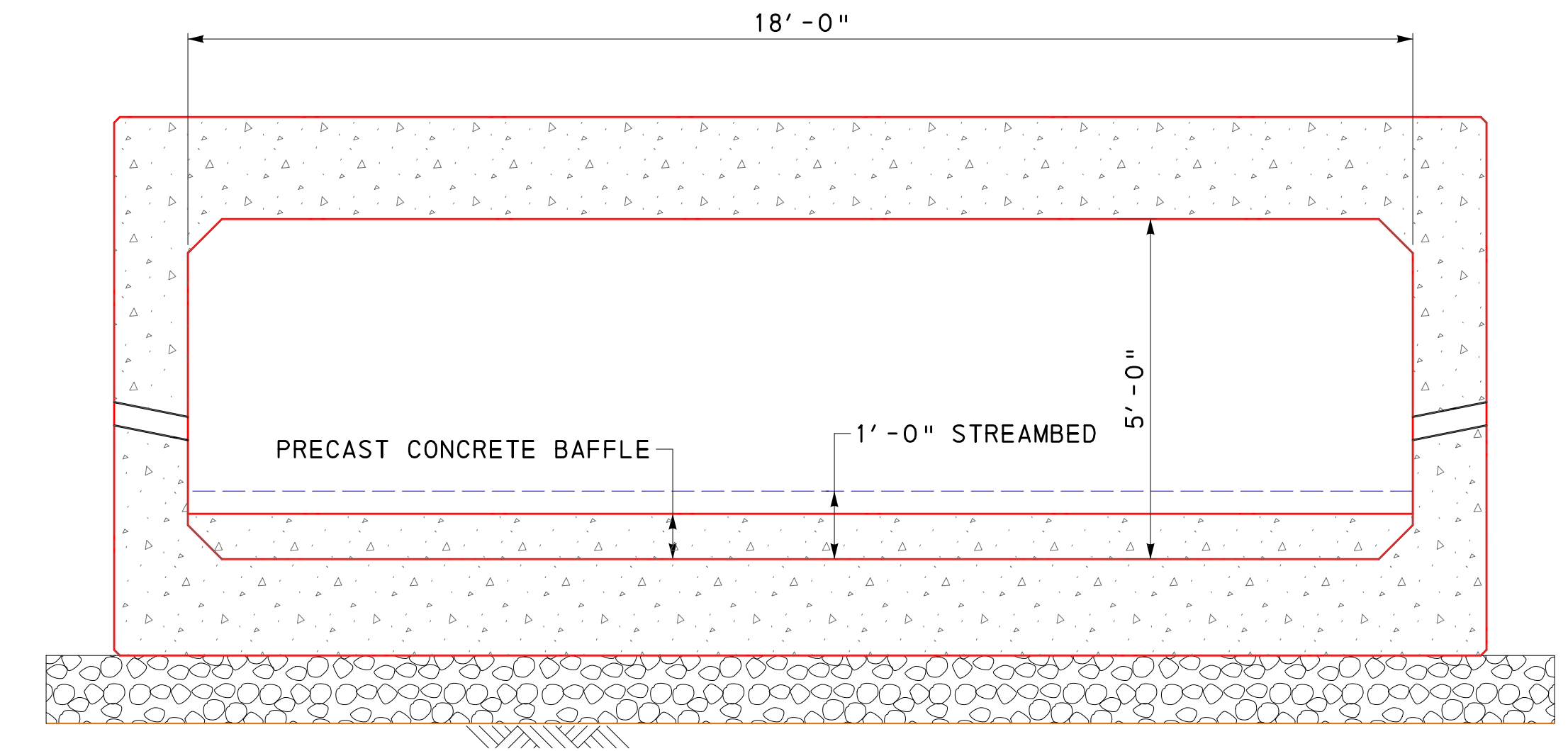
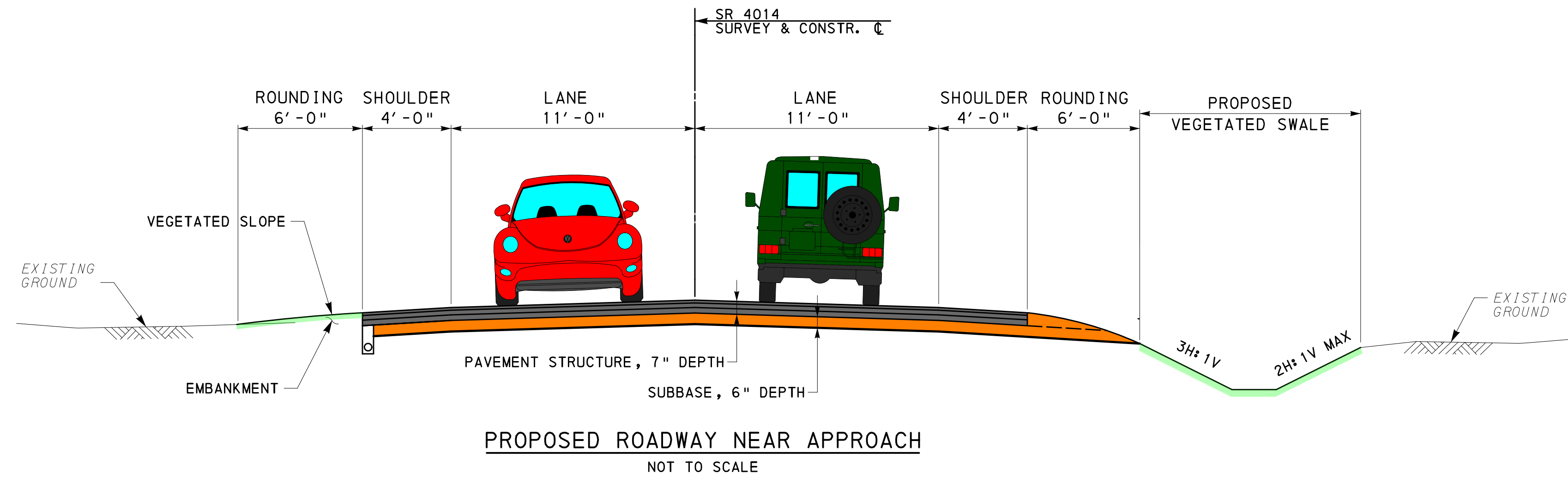


PLAN VIEW
SCALE
0 25 50 FEET



PROFILE - SR 4014
SCALE
0 25 50 FEET HORIZONTAL
0 5 10 FEET VERTICAL

NOT FOR CONSTRUCTION
THIS PLAN REPRESENTS
PRELIMINARY DESIGN ONLY



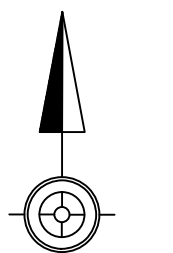
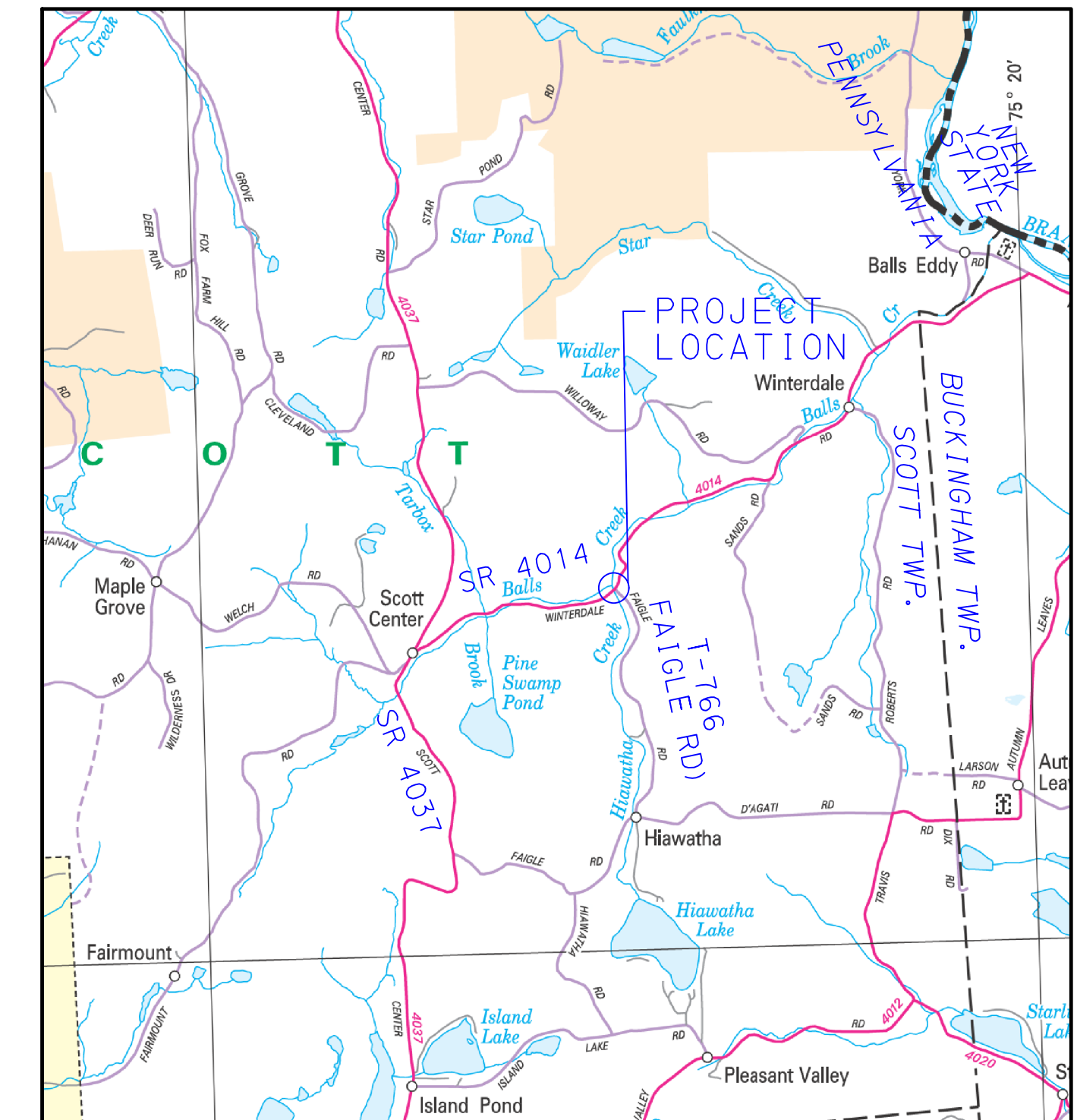
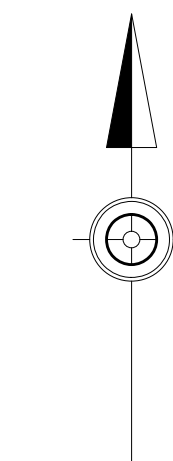
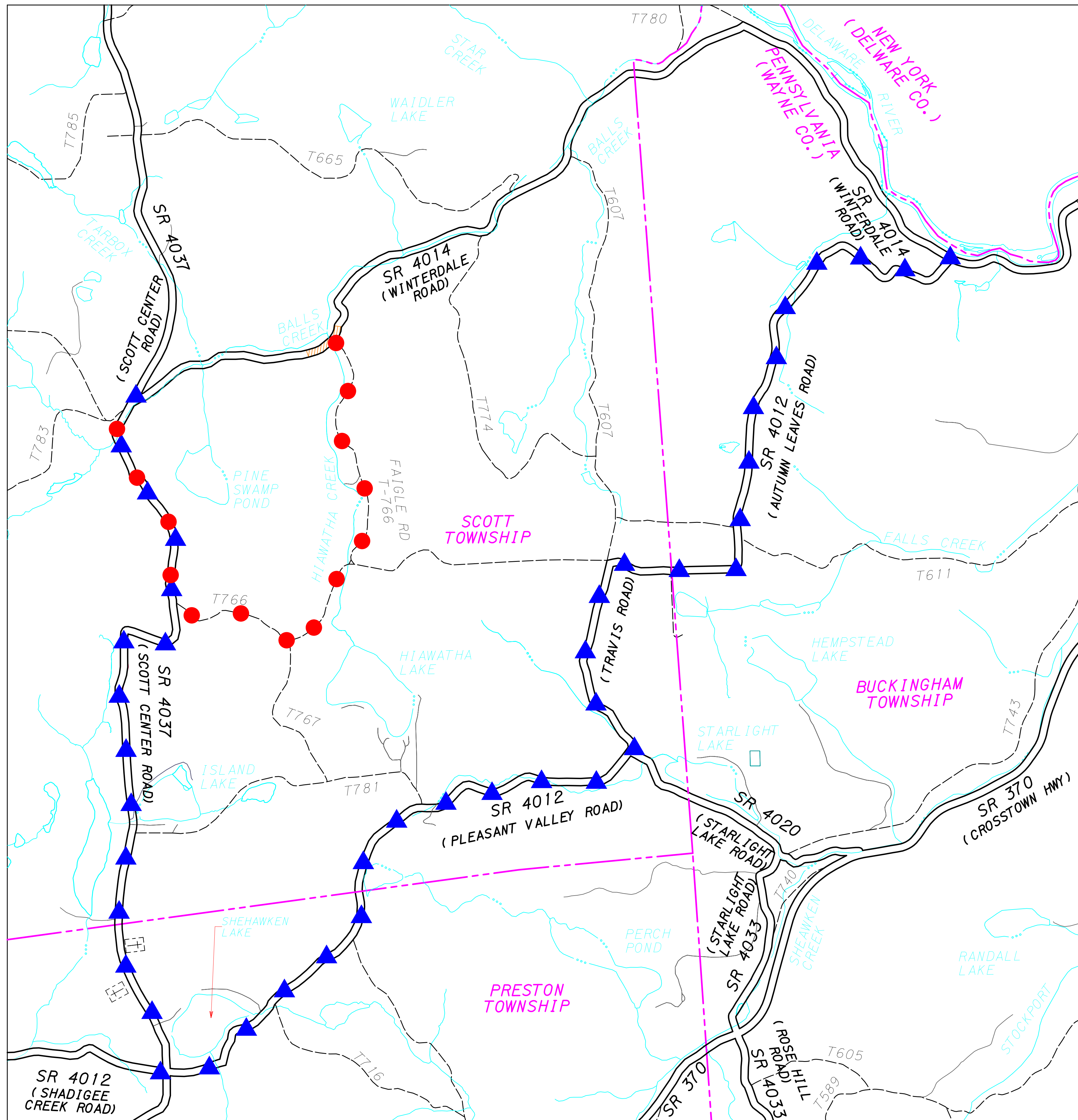
LEGEND:

- NEW PAVEMENT STRUCTURE
- NEW SUBBASE
- CONCRETE
- ROCK CLASS R-6 CHOKED WITH NO 1 COARSE AGGREGATE & NATIVE STREAMBED MATERIAL
- NO 2A COARSE AGGREGATE

- * - MEASURED PERPENDICULAR TO CONSTR \odot
- ** - COMBINATION OF PAVEMENT COURSES & FILL OVER STRUCTURE VARIES 8 3/8" MIN. TO 2'-3 3/8" MAX.
- *** - CULVERT IS TO BE DEPRESSED 1'-0" BELOW NATIVE STREAMBED ELEVATION

NOT FOR CONSTRUCTION
THIS PLAN REPRESENTS
PRELIMINARY DESIGN ONLY

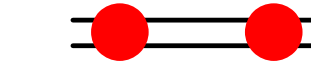



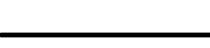



SR 4014 SECTION 651
BRIDGE REPLACEMENT PROJECT
SCOTT TOWNSHIP, WAYNE COUNTY



LOCATION MAP

NOT TO SCALE

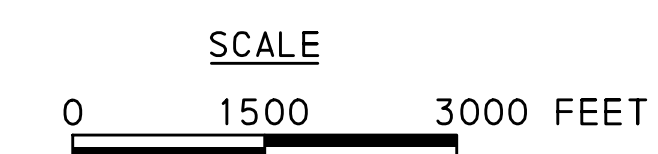
LEGEND

-  DETOUR ROUTE (STAGE 1)
(TOTAL LENGTH = 3.7 MILES)
-  DETOUR ROUTE (STAGE 2)
(TOTAL LENGTH = 13 MILES)
-  PROJECT AREA
-  MUNICIPAL BOUNDARY LINE
-  STATE ROAD
-  TOWNSHIP ROAD
-  OTHER ROAD
-  STREAM

NOTES:

1. SIGNS WILL BE PLACED ALONG S.R. 4014 AND/OR T-766 (FAIGLE ROAD) TO ALERT THE PUBLIC OF THE CLOSURE DATE AT LEAST TWO WEEKS IN ADVANCE.
2. SIGNAGE ALONG DETOUR ROUTE NOT SHOWN. LAYOUT WILL MEET GUIDELINES SET FORTH IN PENNDOT PUBLICATION 213 (TEMPORARY TRAFFIC CONTROL GUIDELINES).

PROPOSED DETOUR PLAN



NOT FOR CONSTRUCTION
THIS PLAN REPRESENTS
PRELIMINARY DESIGN ONLY