



# PENNDOT MAJOR BRIDGE P3- I-81 SUSQUEHANNA



Bridging Pennsylvania Developers I &  
Bridging Pennsylvania Constructors  
Public Meeting

September 13, 2023

## How to MAXIMIZE today:

- **WEBINAR:** This is in Webinar format, only presenters will have speaking capabilities.
- **QUESTION:** Please direct your questions to the Q&A option. We will look to incorporate these throughout the presentation and during the Q&A portion at the end.
- **RECORDING:** We will be recording today's session. English and Spanish recordings, along with a copy of this presentation will be published following today's session.

# Agenda

- Welcome & Introductions
- Pre-Construction and Current Activities
- Upcoming Construction Schedule Activities
- Getting Involved- DBE & Workforce Programs
- Closing Remarks & How to Stay Informed

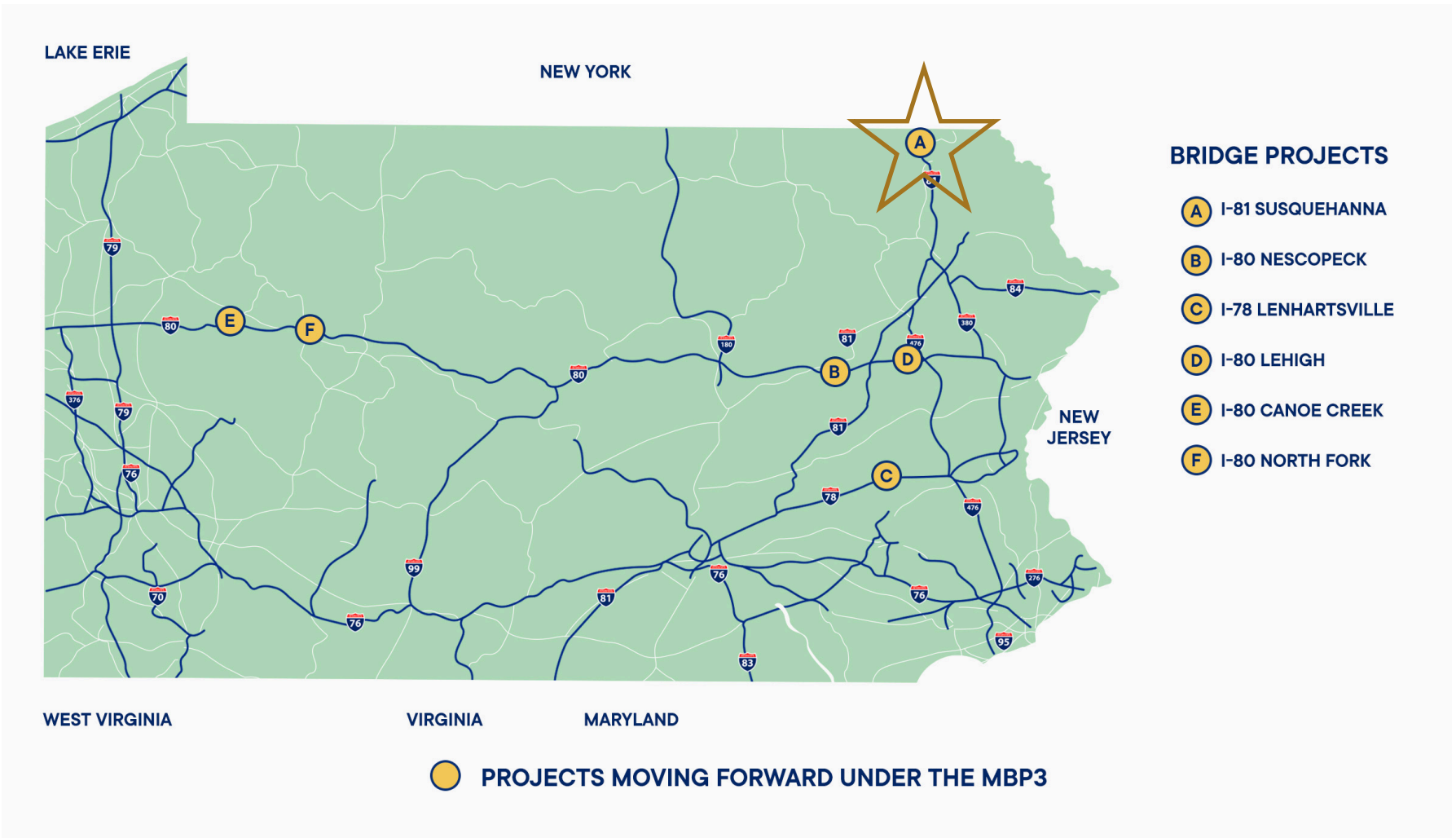


**Welcome & Introduction**

# Meet the I-81 Susquehanna Team



# I-81 Susquehanna Project





**Pre-Construction and Current Activities:  
Borton-Lawson**

# Current Design Activities

## Roadway & Structures:

- Includes nine (9) miles of Reconstruction on I-81
  - Nine (9) Structures, including **NB & SB Bridges over Harmony Road (Route 1010) & Susquehanna River**
  - Full depth reconstruction, Increase outside shoulders to 12' wide
  - Full replacement of the drainage network, guiderail / barrier, and signing
  - Minor improvements / Standard upgrades to the Ramps at the Welcome Center and to the Route 171 Interchange
  - Work on side roads including Susquehanna St, Route 171 Hallstead/ Great Bend Interchange, Harmony Rd (Route 1010), Randolph Rd (Route 1029), & Emerson Rd.

**Permits:** All Permits have been acquired for the project by the following agencies:

- DEP (Department of Environmental Protection)
- ACOE (Army Corp. of Engineers)
- Susquehanna County Conservation District

## Right-of-Way:

- All Right-of-Way has been acquired for the project.

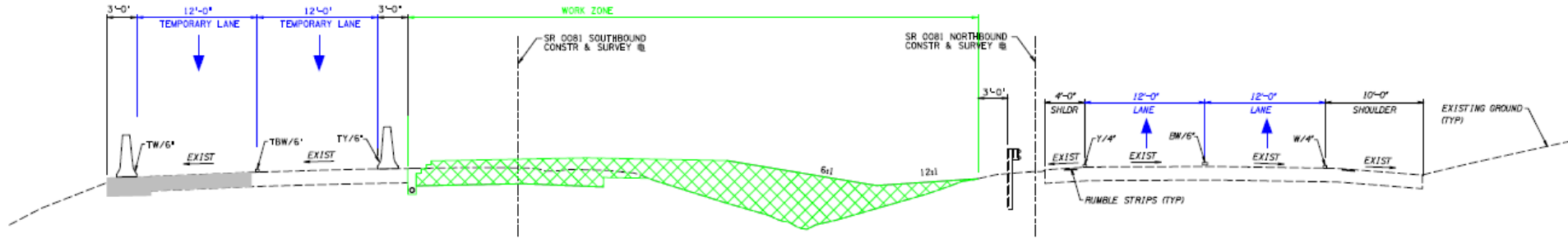


**BORTON  
LAWSON**

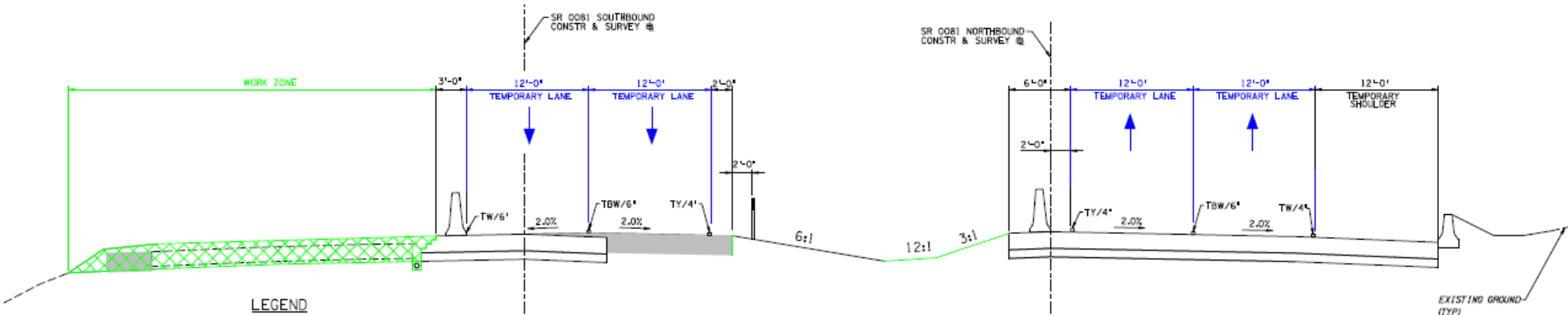
a verdantas  
company



# Traffic Control

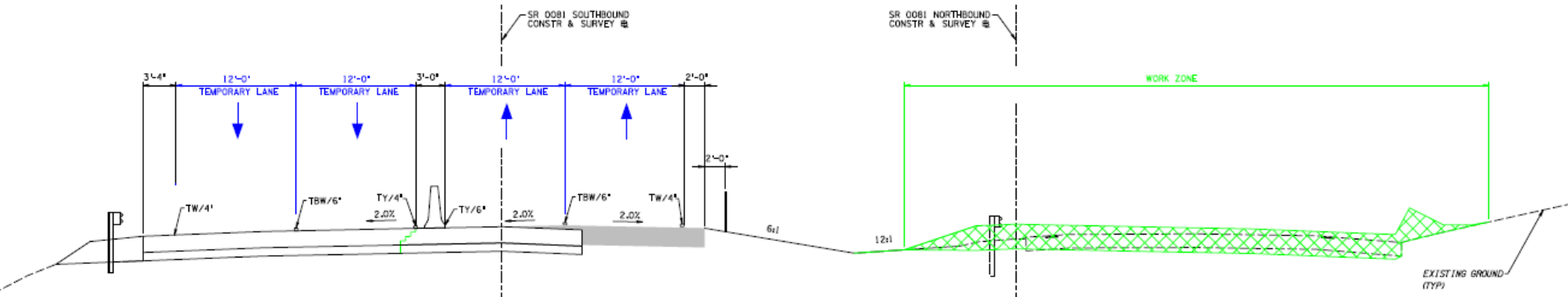


Traffic Control: Stage 2 SB Reconstruction

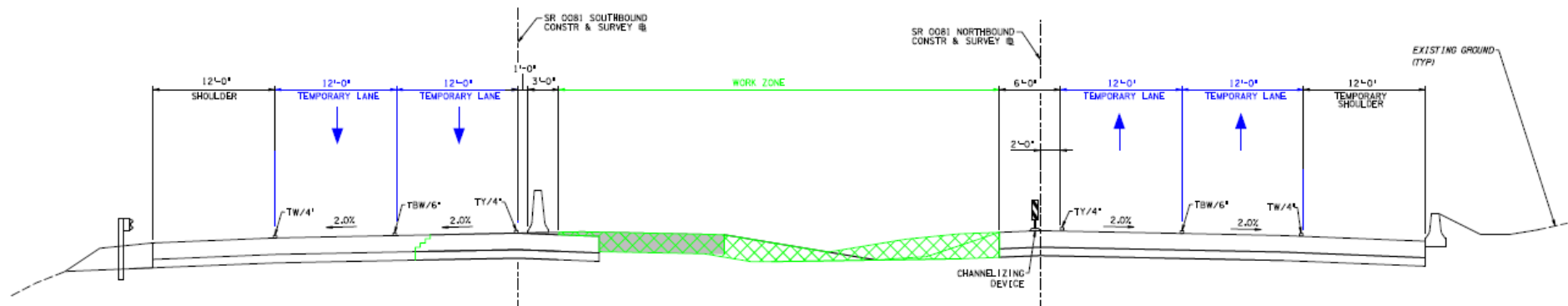


Traffic Control: Stage 3 SB Reconstruction

# Traffic Control



Traffic Control: Stage 4 NB Reconstruction



Traffic Control: Stage 5 Median Reconstruction



# Traffic Control: Emergency Cross Overs on I-81 for Traffic Relief

## Four Locations During Stages 2 & 3:

- Station 1985+00 NB/SB- MM 223.9
- Station 2213+00 NB/SB- MM 228.2
- Station 2308+00 NB/SB- MM 230.0
- Station 2381+00 NB/SB- MM 231.4

## Five Locations During Stage 4:

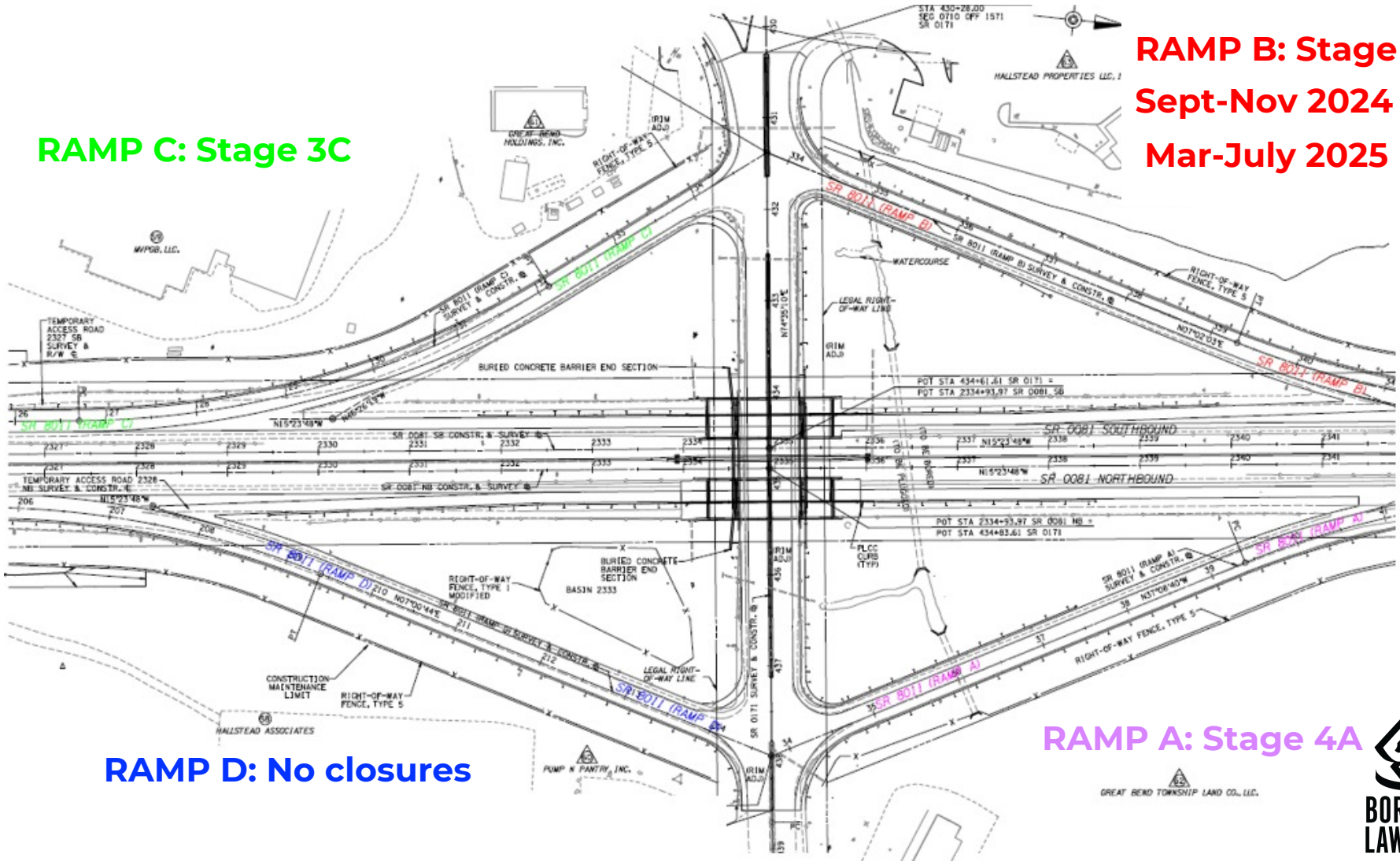
- Station 2001+00 to Station 2006+00- MM 224.3
- Station 2110+00 to Station 2115+00- MM 226.3
- Station 2115+00 to Station 2220+00- MM 228.3
- Station 2404+00 to Station 2409+00- MM 231.9
- Station 2454+00 NB/SB- MM 232.7

These locations will have temporary barrier that can be removed by the contractor during emergency incidents that shut down the interstate for an extended period of time. A single lane pattern would then be implemented during this emergency.

# Exit 230: Ramp Detours

**RAMP C: Stage 3C**

**RAMP B: Stage 3A**  
**Sept-Nov 2024 &**  
**Mar-July 2025**



**RAMP D: No closures**

**RAMP A: Stage 4A**

## Exit 230: Ramp Detours (cont.)

### **Stage 3A: Ramp B Detour (Sept-Nov 2024 & Mar-July 2025)**

- Emergency access is provided along Ramp C during Ramp B closures
- Warning signs placed at Kirkwood interchange on the SB lanes notifying "NO EXIT FOR 13 MILES"
- SR 81 SB Traffic wishing to use Exit 230 SR 171 "Hallstead/ Great Bend" during Ramp B closure will continue SB to Exit 223 SR 492 "New Milford", upon exiting off ramp onto SR 492, turn left onto entrance ramp to SR 81 NB to gain access to Exit 230 SR 171 "Hallstead/ Great Bend."

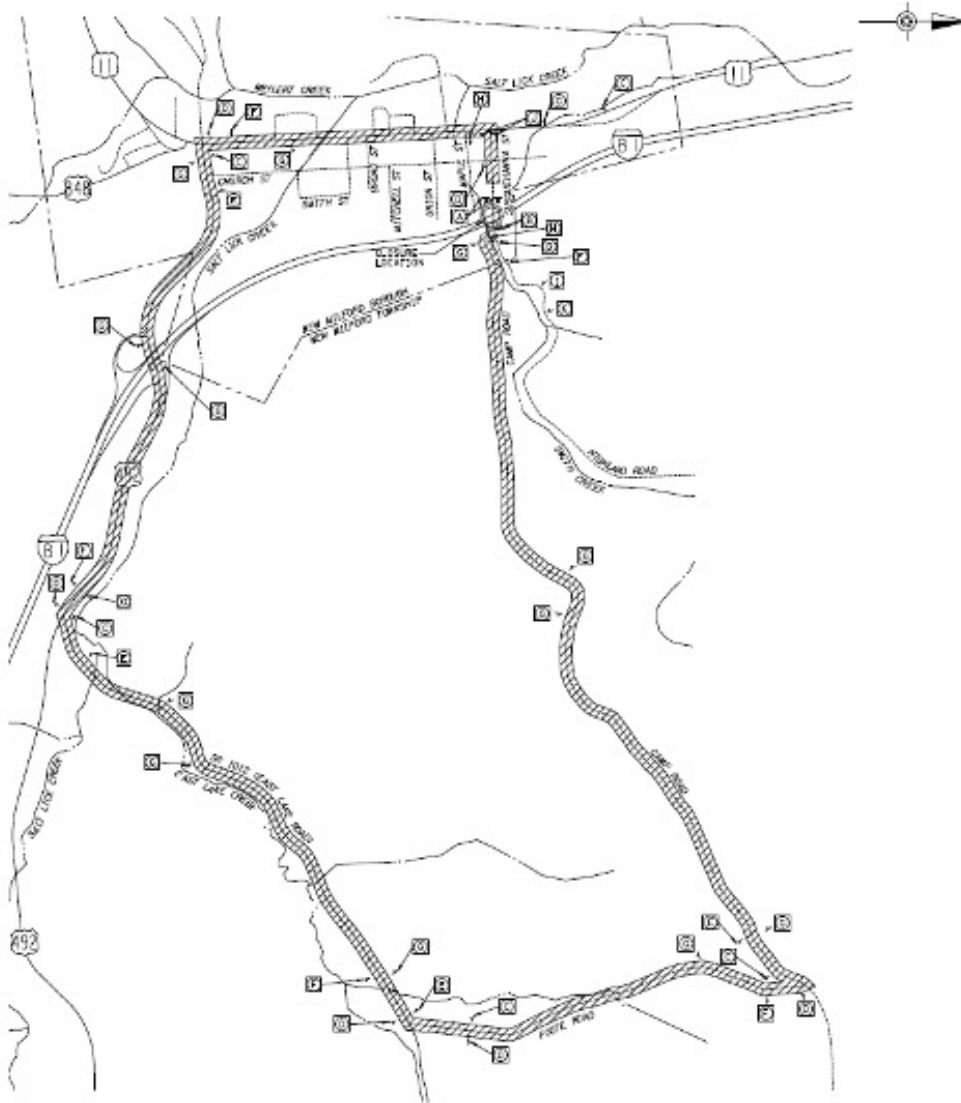
### **Stage 3C: Ramp C Detour**

- No dedicated emergency access required for this condition.
- Detour is in place at the interchange to travel south on SR 11 to the MM223 interchange and access SR 81 SB from there.

### **Stage 4A: Ramp A Detour**

- Emergency access is provided along temporary off Ramp D
- Traffic I detoured up SR 11 into Kirkwood, NY for NB-81 access.

# Susquehanna Street: Detour

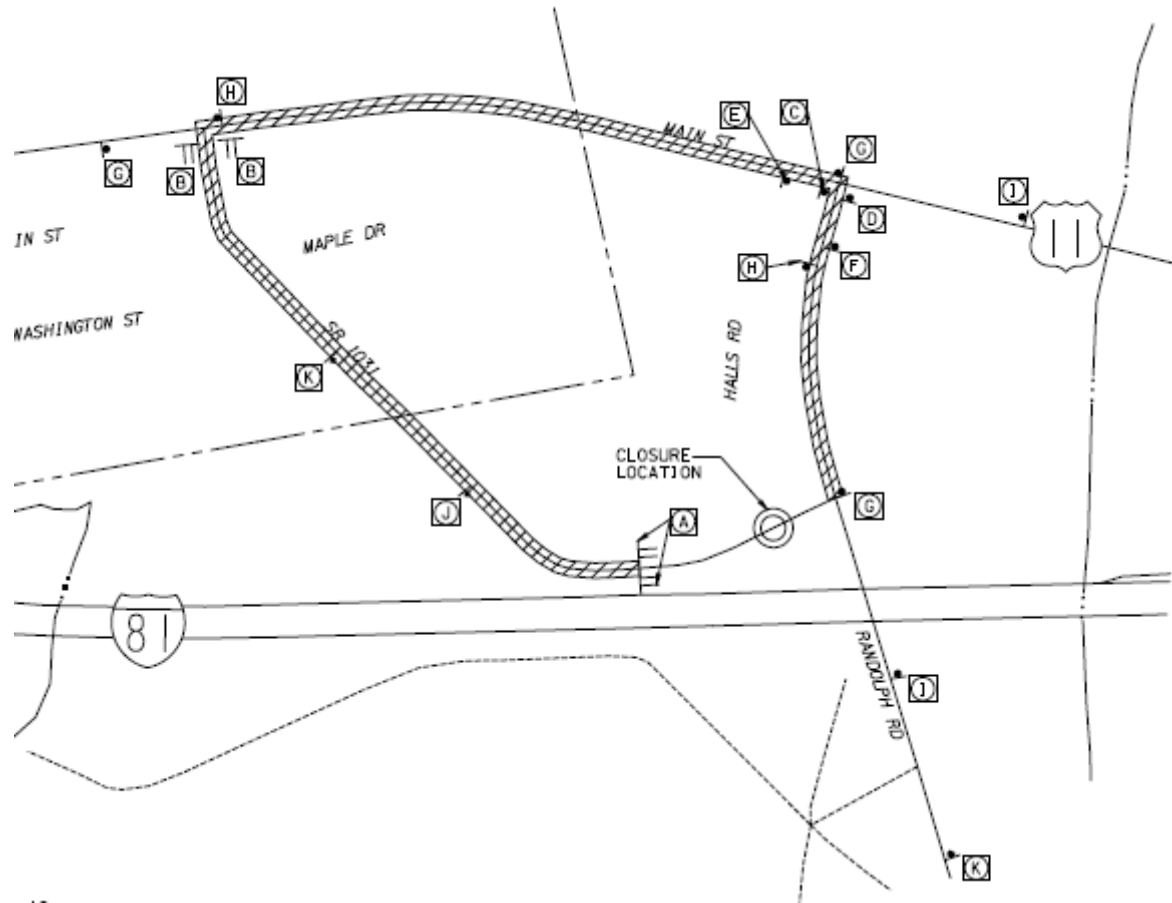


Detour During Stages 2-4:

- Route 0011 (Main Street)
- Route 0492 (Jackson Street)
- Route 1012 (East Lake Road)
- Foote Road
- Camp Road
- Susquehanna Street

Total Detour Length: 6.8 miles

# Randolph Street: Detour



## ACTIVE NOW

Detour During Stages 1-2:

- Route 1029 (Randolph Road)
- Route 11
- Route 1031 (Randolph Street)

Total Detour Length: 0.9 miles





**Upcoming Construction Schedule & Activities**  
**H&K/Fay**

# Introduction to H&K Group

H&K began as a small family business over a half century ago. Today, H&K is a dynamic group of vertically integrated companies providing complete heavy civil contracting and construction materials solutions with safety, speed, quality, efficiency, and value.

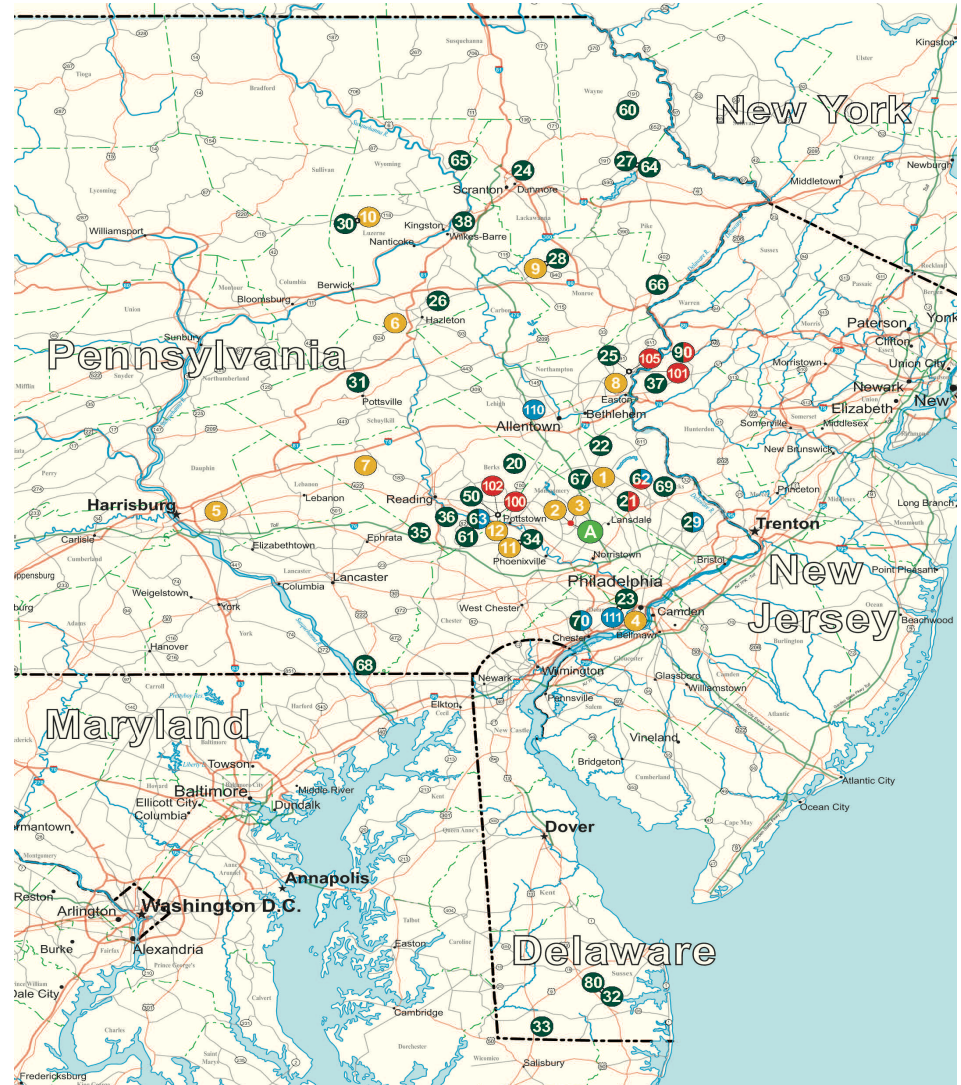
Here at H&K, we live and work by a value system that places accountability, safety, quality and integrity above all other business practices and principles.



Strength | Experience | Value

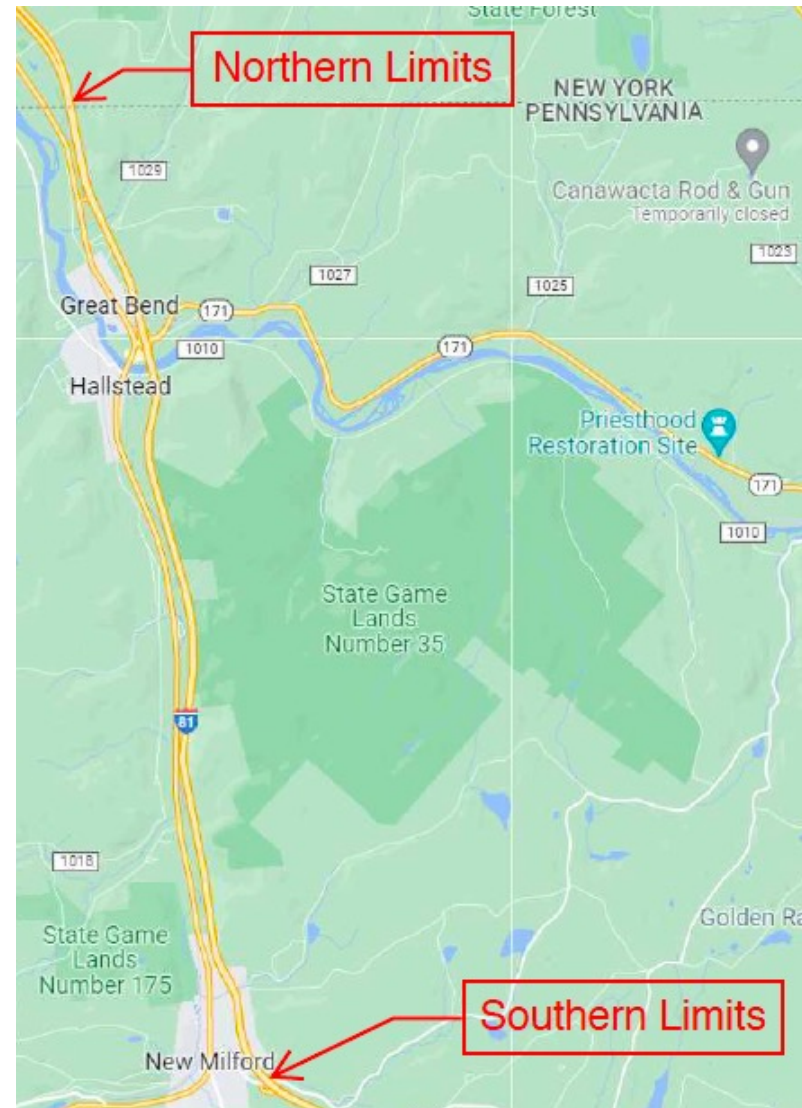
# Introduction to H&K Group

- 11 Contracting Companies
- 22 Stone Quarries
- 19 Asphalt Plants
- 7 Concrete Plants
- 2 Precast Concrete Plants
- 3 CMU Block Plants
- Workforce of 2,000 People with more than 1,800 PA Residents



# Scope of Work-H&K Group

- Total reconstruction of approx. nine (9) miles of both Northbound and Southbound I-81 from New Milford Exit to the New York State Border. This includes improvements to existing road base, upgrading storm sewer, and a total replacement of eight (8) structures.
- This is currently intended to be reconstructed in five (5) Stages, anticipated starting construction in Summer 2023 and lasting into Summer of 2028.

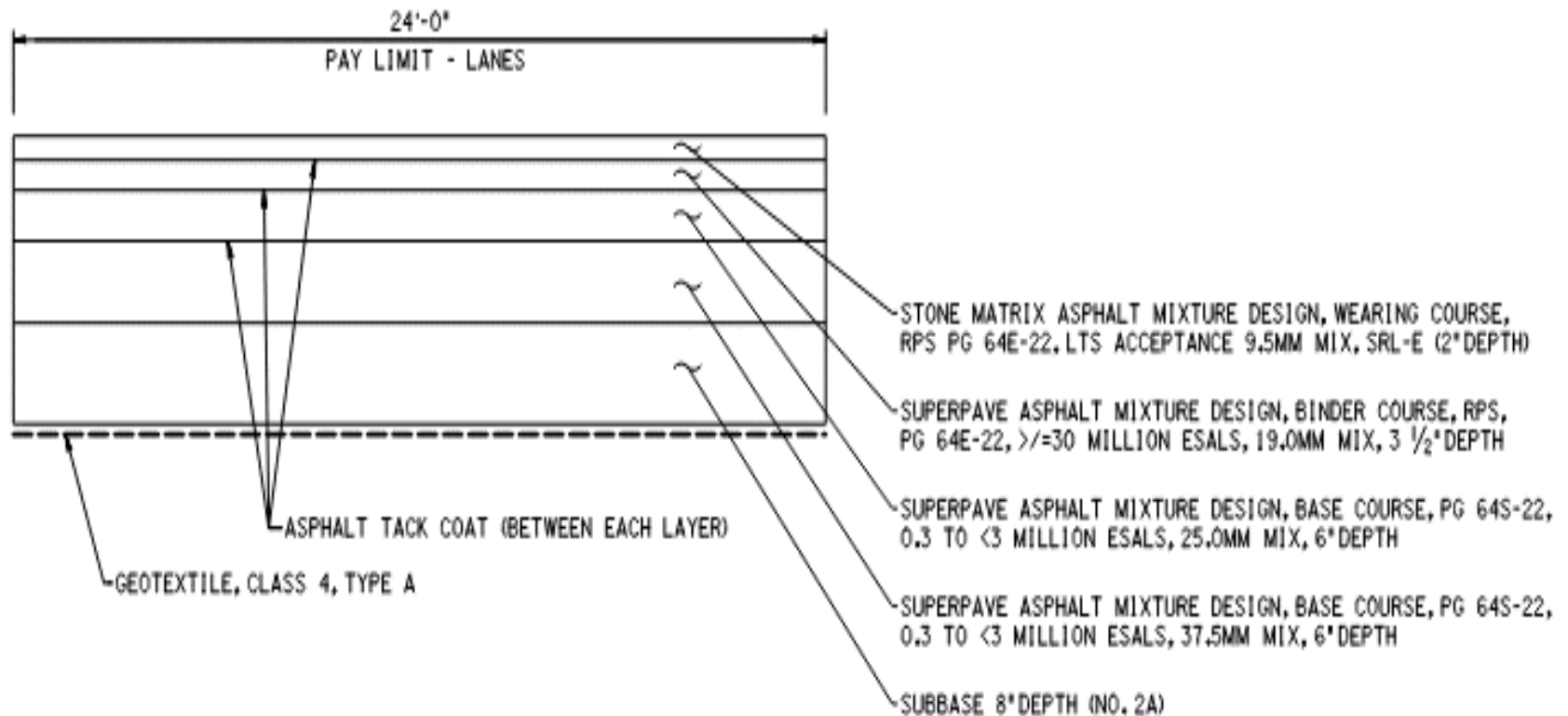


# Scope of Work-H&K Group

Traffic stoppages will be required for small windows for demolition of existing Bridges and Setting Beams for new proposed bridges.

STRUCTURE	LOCATION	ANTICIPATED STAGES	ANTICIPATED TIMELINE
S-37568	RANDOLPH RD. SR 1029 OVER SR 81	RECONSTRUCTED IN STAGES 1 & 2	SUMMER 2023 TO 2025
S-37507	SR 81 OVER SR 171	RECONSTRUCTED IN STAGES 2, 3 & 4	FALL 2023 TO 2027
S-37596	SR 81 OVER TROWBRIDGE CREEK	RECONSTRUCTED IN STAGES 2, 3 & 4	FALL 2023 TO 2027
S-40118	SR 81 OVER UNNAMED TRIBUTARY TO SALT LICK CREEK	RECONSTRUCTED IN STAGES 2, 3 & 4	FALL 2023 TO 2027
S-37509	SR 81 OVER SUSQUEHANNA ST	RECONSTRUCTED IN STAGES 2, 3 & 4	FALL 2023 TO 2027
S-37522	SR 81 OVER NEW YORK, SUSQUEHANNA & WESTERN RAILWAY	RECONSTRUCTED IN STAGES 2, 3 & 4	FALL 2023 TO 2027
S-40116	SR 81 OVER UNNAMED TRIBUTARY TO SALT LICK CREEK	EXISTING BOX CULVERT REHABILITATION	CONTINUOUS
S-40117	SR 81 OVER SMITH CREEK	BOX CULVERT REHABILITATION	CONTINUOUS

# Scope of Work-H&K Group



SR 0081 - NORTHBOUND / SOUTHBOUND  
LANE PAVEMENT SECTION

NOT TO SCALE

# H&K Scope of Work-By the Numbers

- 30 Acres of Clearing and Grubbing
- 1,000,000 CY of Excavation
- 42,000 LF of Storm Sewer Piping (Various Sizes)
- 1,200 EA Storm Drainage Structures
- 450,000 TN of Various Aggregates Required
- 160,000 TN of Rip Rap
- 650,000 TN of Asphalt
- 255,000 LF of Pavement Base Drain
- 92,000 LF of Guiderail
- 95,000 LF of Temporary Barrier
- 35,000 LF of Permanent Concrete Barrier
- 51,000 LF of Right Of Way Fencing
- 145,000 LF Various Sized Silt Sock



# Introduction to Fay



Creators of Safe and Innovative Infrastructure Solutions

Founded in 1947, as a Pittsburgh general contractor, Fay S&B USA Construction, is an accomplished general contractor and solution provider. Fay is a recognized industry leader in design-build, value engineering and accelerated construction delivery methods.

Fay has a decades-long relationship with unions when we have craft hiring needs. These unions includes trades such as carpenters, laborers, operators, pile drivers, teamsters and cement masons.



**Work  
Safely**



**Provide  
Solutions**



**Value  
People**



**Act with  
Integrity**



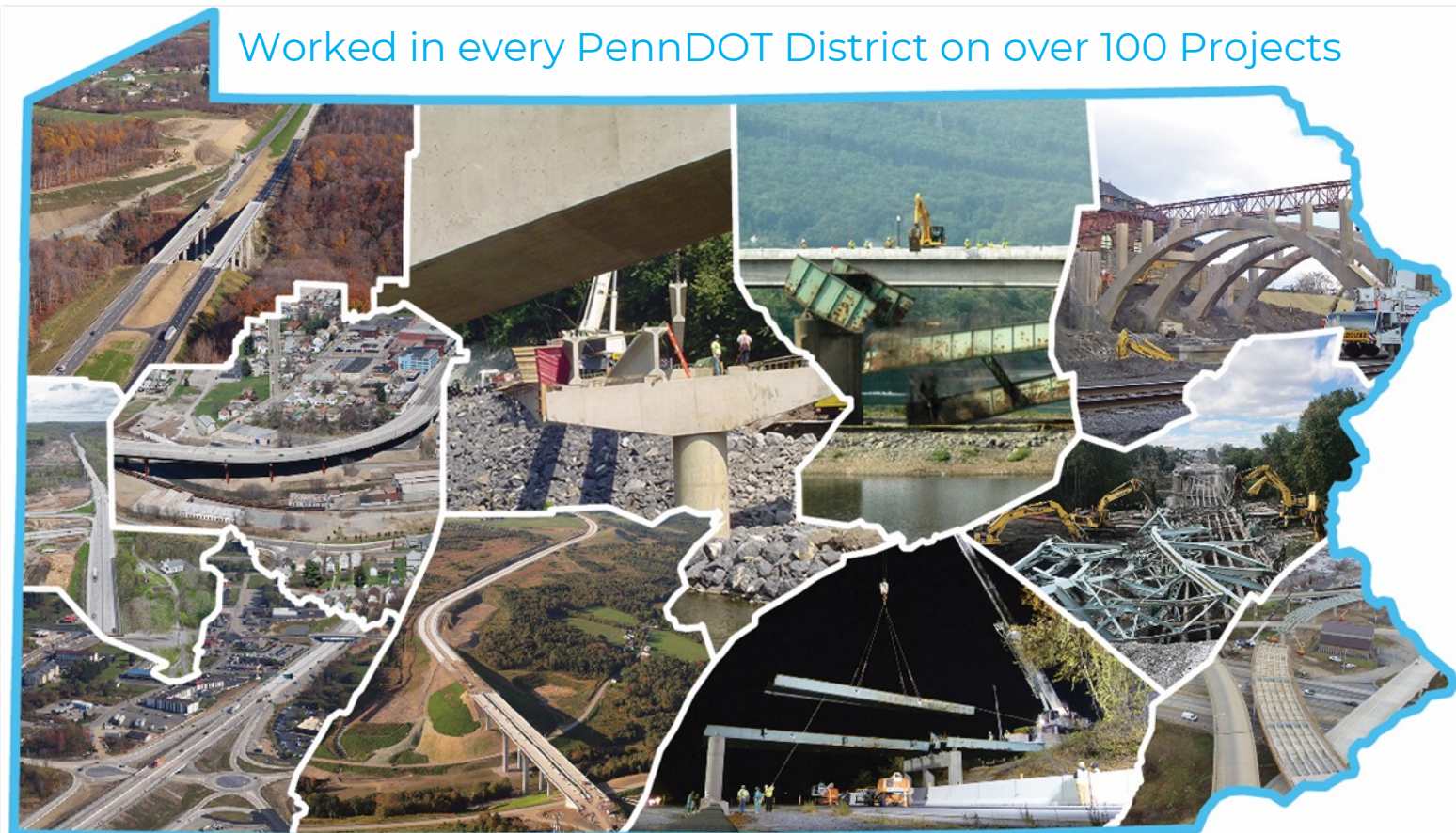
**Deliver  
Return**



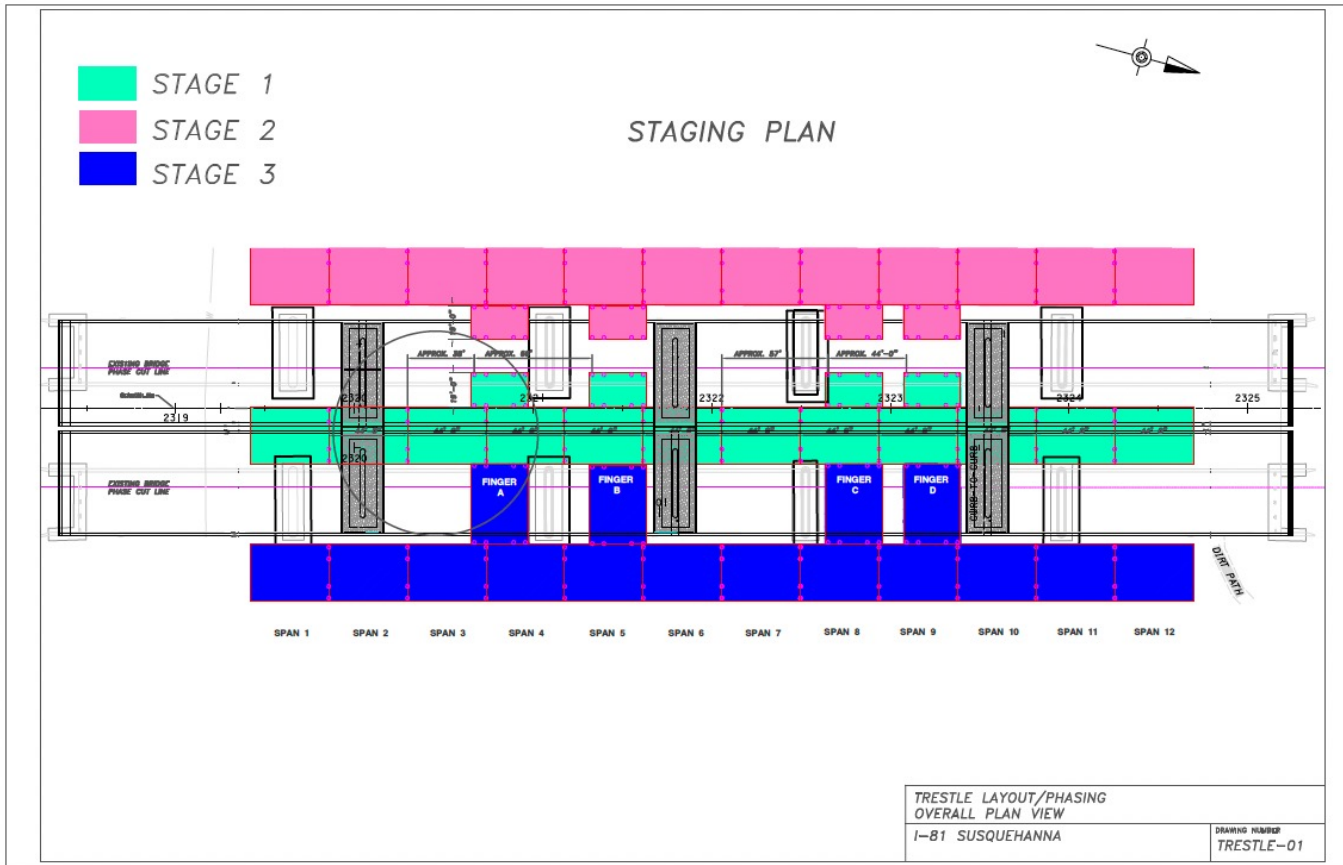
# Introduction to Fay

Headquartered in Pittsburgh, S&B USA Construction, is an established general contractor and solutions provider operating in Pennsylvania for over 75 years.

Worked in every PennDOT District on over 100 Projects



# Building the Bridge- Fay



Work  
Safely



Provide  
Solutions



Value  
People



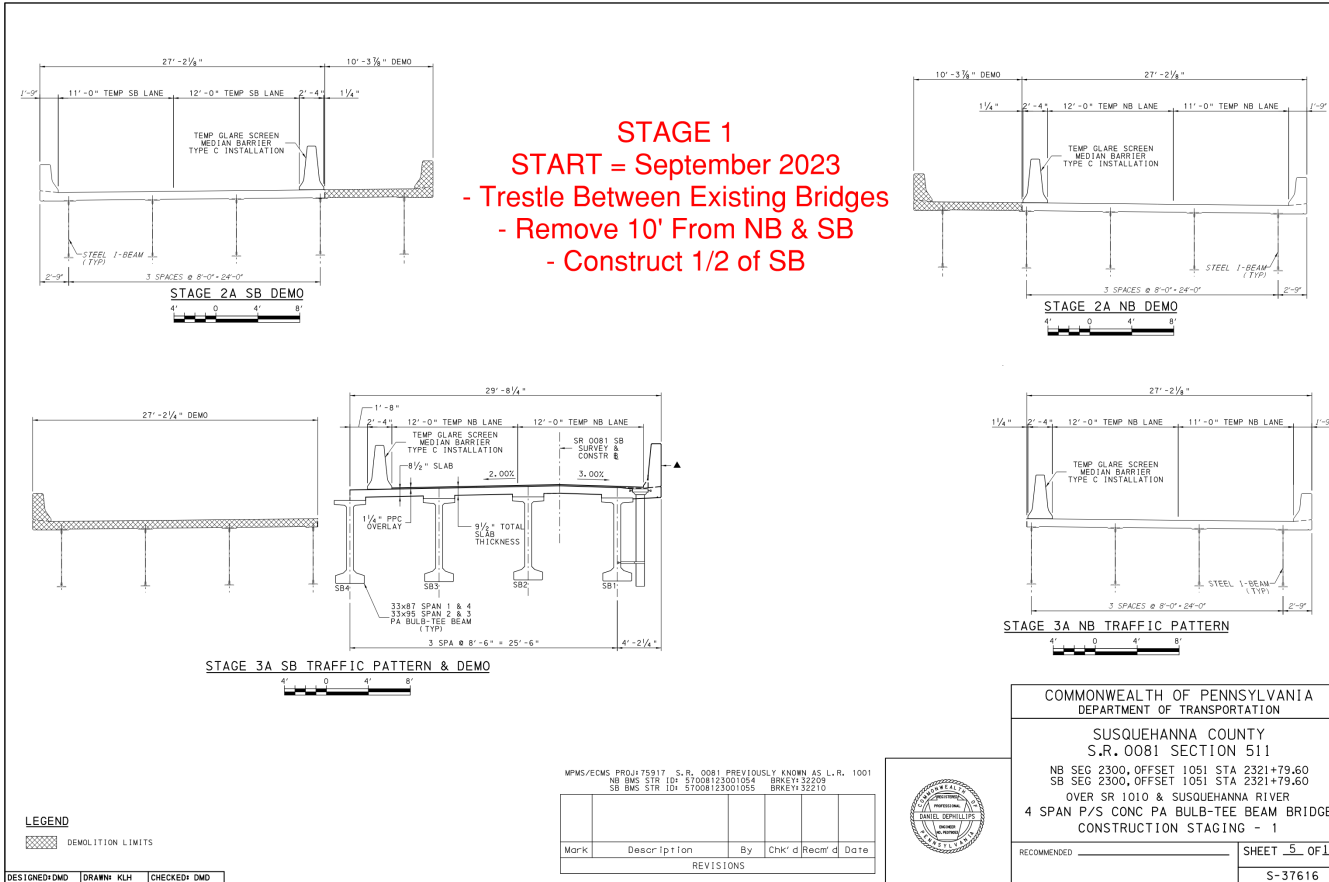
Act with  
Integrity



Deliver  
Return

# Building the Bridge- Fay

**STAGE 1**  
**START = September 2023**  
 - Trestle Between Existing Bridges  
 - Remove 10' From NB & SB  
 - Construct 1/2 of SB



**Work Safely**



**Provide Solutions**



**Value People**

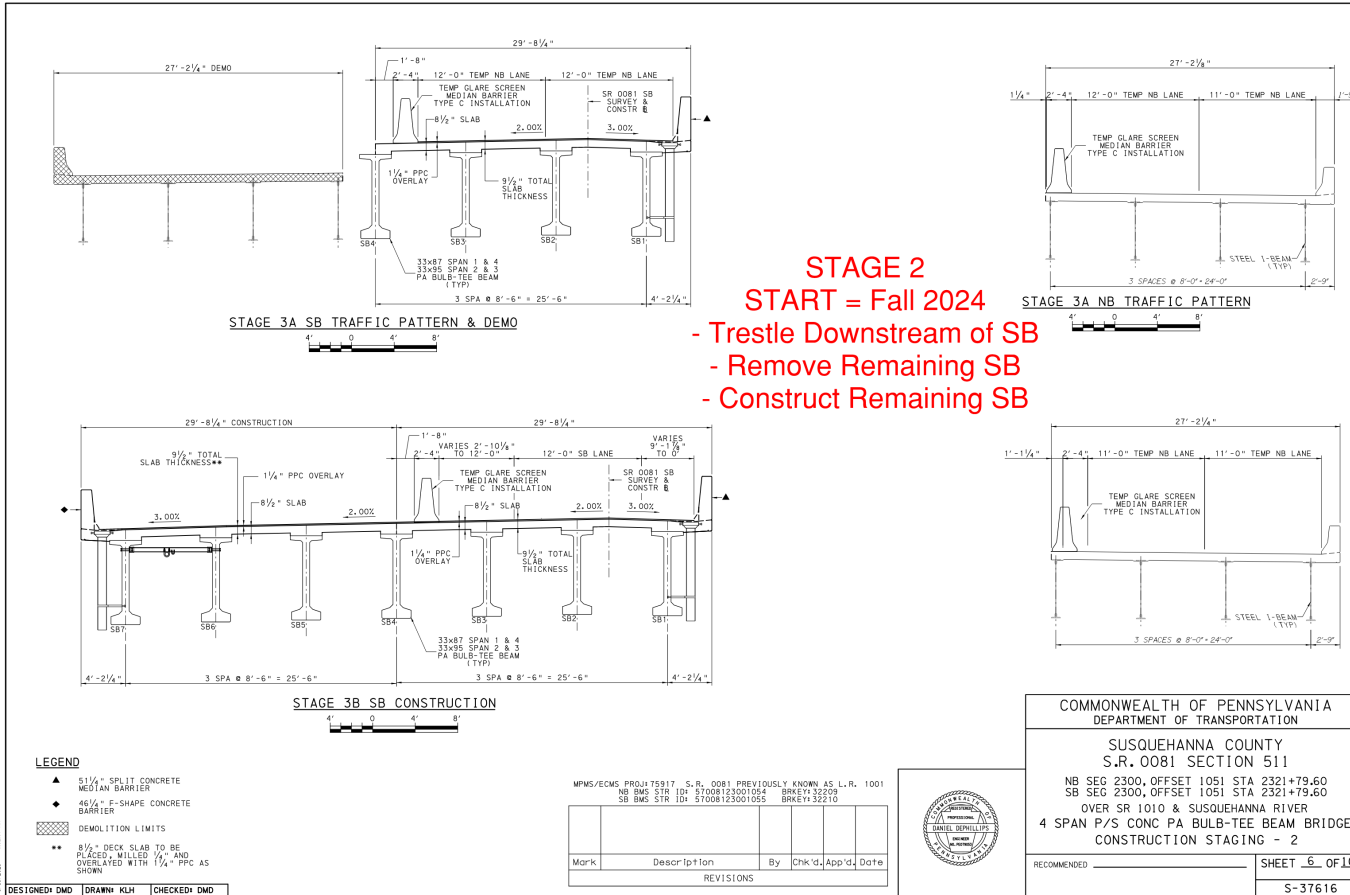


**Act with Integrity**



**Deliver Return**

# Building the Bridge- Fay



Work Safely



Provide Solutions



Value People

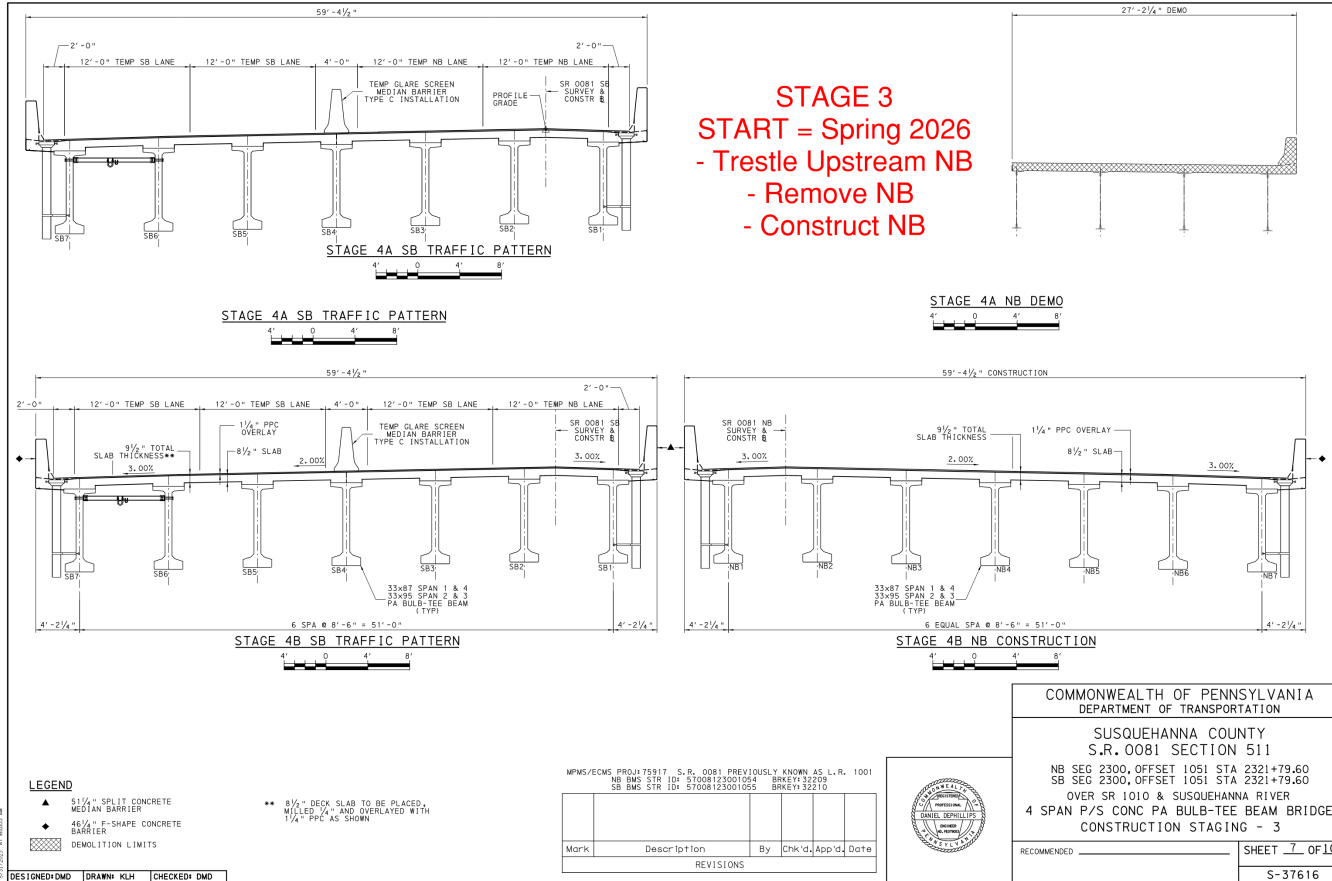


Act with Integrity



Deliver Return

# Building the Bridge- Fay



Work Safely



Provide Solutions



Value People



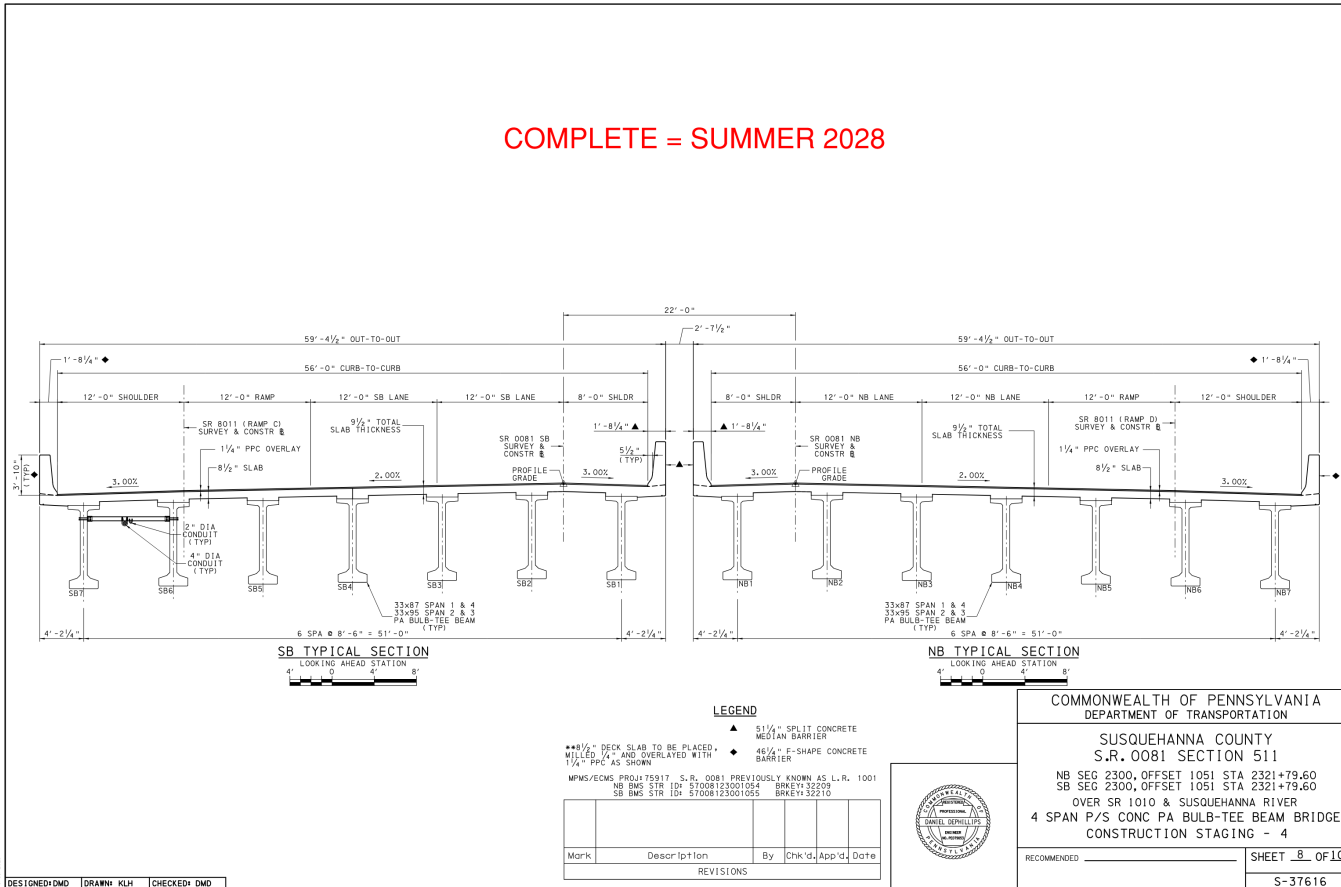
Act with Integrity



Deliver Return

# Building the Bridge- Fay

COMPLETE = SUMMER 2028



Work Safely



Provide Solutions



Value People



Act with Integrity



Deliver Return

# I-81 Susquehanna Subcontracting & Supplier Opportunities

## Anticipated list of potential Subcontracting & Supplier Opportunities:

- Concrete Accessories and Forms
- Concrete Pumping
- E&S Protection
- Electrical
- Fabricated Structural Steel
- Frames and Grates
- Geotextile
- Maintenance/Protection of Traffic
- Material Testing
- Piling-Supply
- Pipe Testing
- PPC Overlay
- Protective Coatings/Sealers
- ROW Fences
- Reinforced Concrete Pipe
- Rebar Furnish & Install
- Saw Cutting
- Signals
- Signs
- Surveying
- Trucking
- Tooth Dams



\* All potential Subcontractors need to be current PA Business Partners

\*\* All materials to be Bulletin 15 Approved



**Get Involved: DBE & Workforce Opportunities**

**MTI**



# Our DBE & Workforce Development Team

BPD-I & BPC's local team will be coordinated by Modern Times Inc.



**Alex Cann**

## **BPD-I/BPC Diversity & Inclusion Manager**

- Modern Times, Inc (MTI)
  - Liaison with PennDOT
  - Compliance & Oversight of DBE/ SBE, On-the-Job Training (OJT), Diversity & Inclusion programs
  - Outreach coordinator, small business and workforce diversity advocate



**Jasmine Brevard**



**Closing Remarks & How to Stay Informed**

## Next Steps & Contacts Info

BPD-I Public Information Office  
PIC Hotline: (717) 500-6088  
[PublicInformationOffice@PennBridges.com](mailto:PublicInformationOffice@PennBridges.com)

District 4 I-81 Susquehanna PennDOT  
Community Relations Coordinator  
[i81Susquehanna@pa.gov](mailto:i81Susquehanna@pa.gov)

BPD-I Public Information Manager  
Carla Julian  
[Carla@moderntimesinc.com](mailto:Carla@moderntimesinc.com)

For Project updates visit:  
[www.penndot.pa.gov/i81Susquehanna](http://www.penndot.pa.gov/i81Susquehanna)

BPD-I Equal Employment Opportunity  
Manager  
Alex Cann  
[Alexandra@moderntimesinc.com](mailto:Alexandra@moderntimesinc.com)

For Contracting Opportunities visit:  
[Bridgingpennsylvaniapartners.com](http://Bridgingpennsylvaniapartners.com)

**Please submit all questions through the Q&A function. Thank you!**





**THANK YOU FOR ATTENDING!**



September 13, 2023