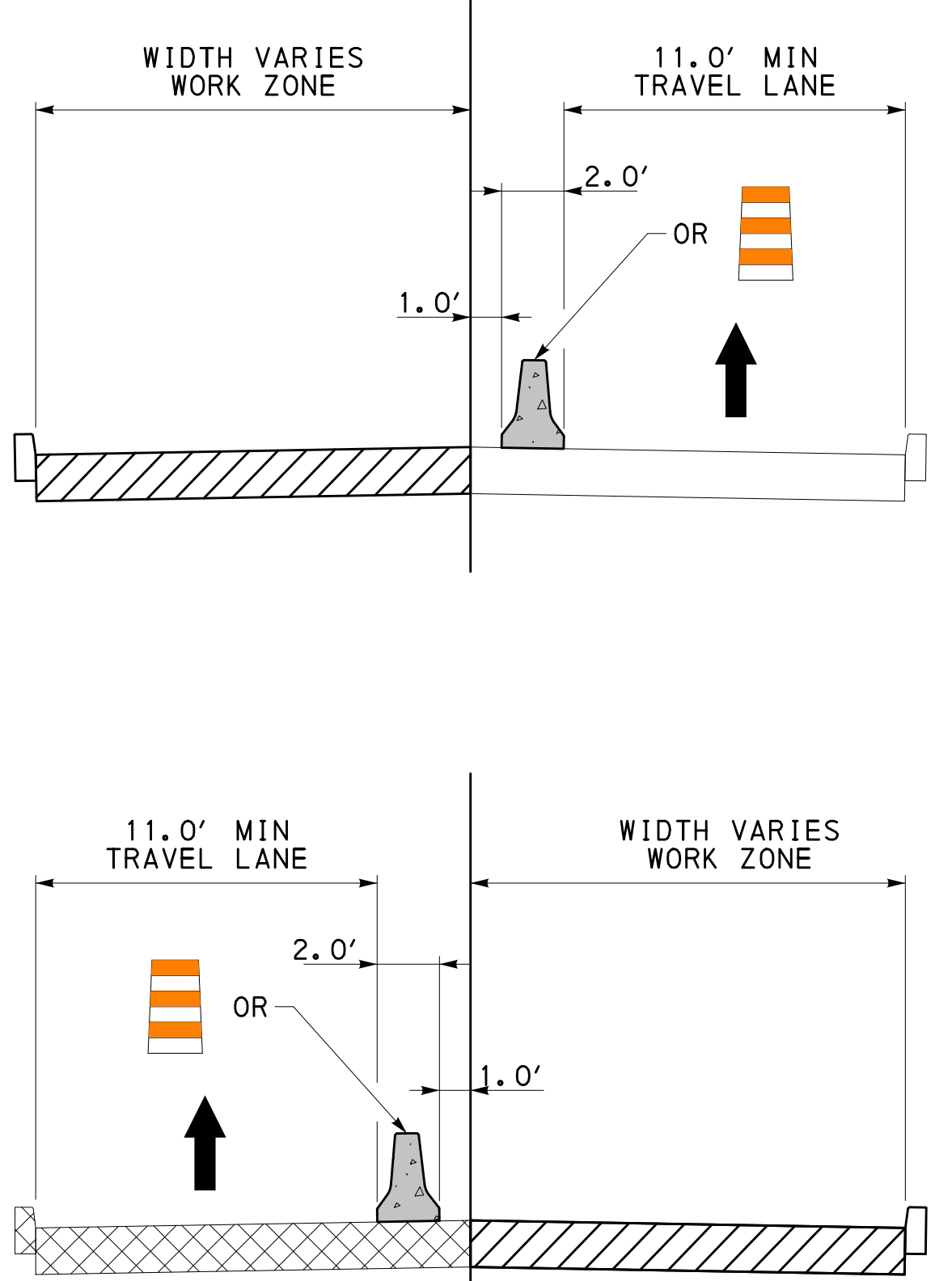
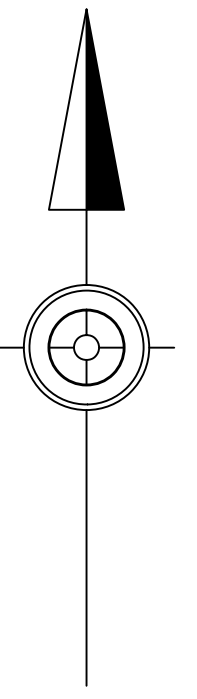
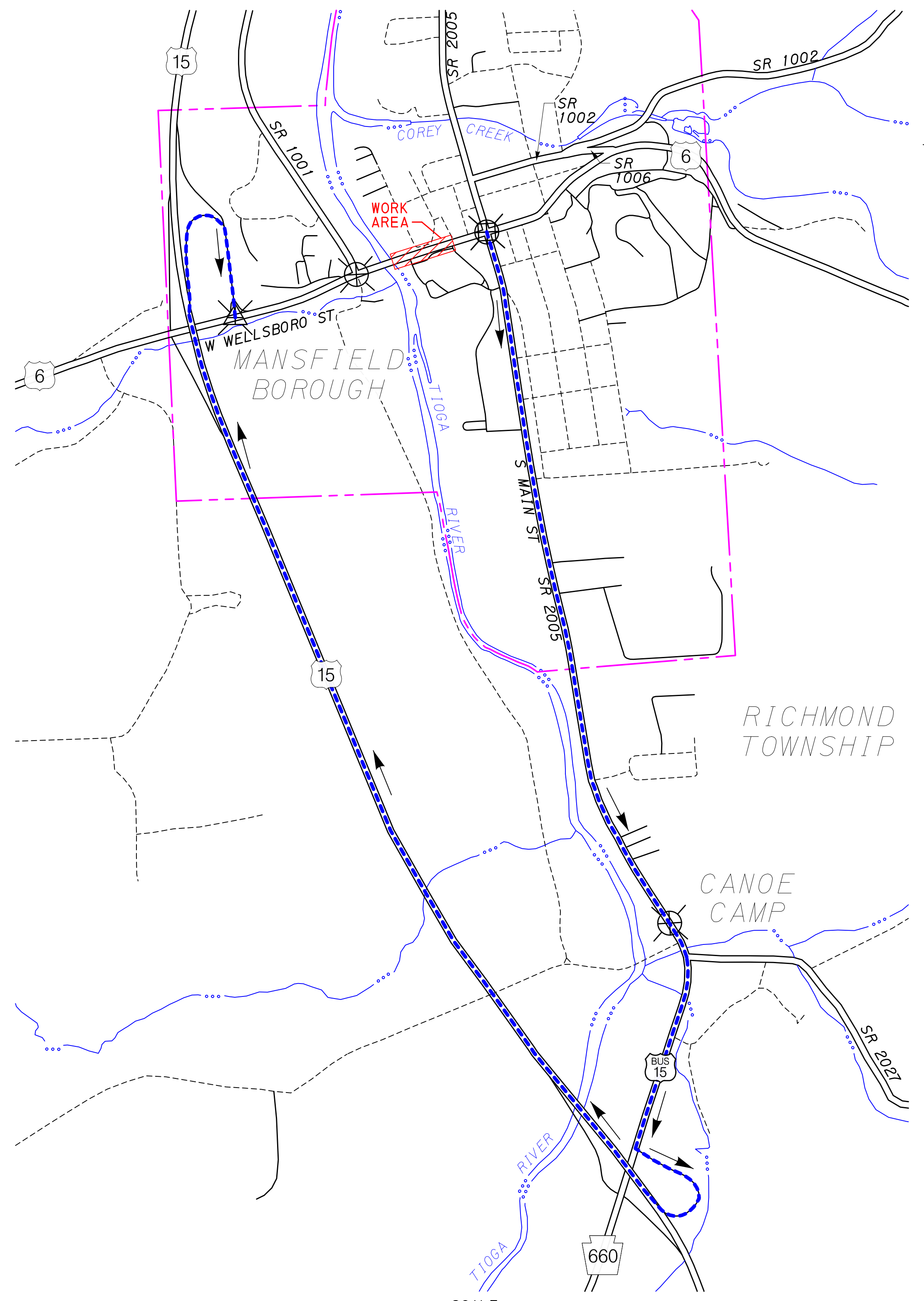


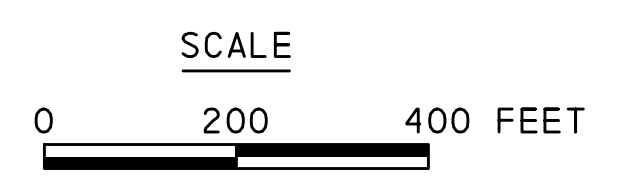
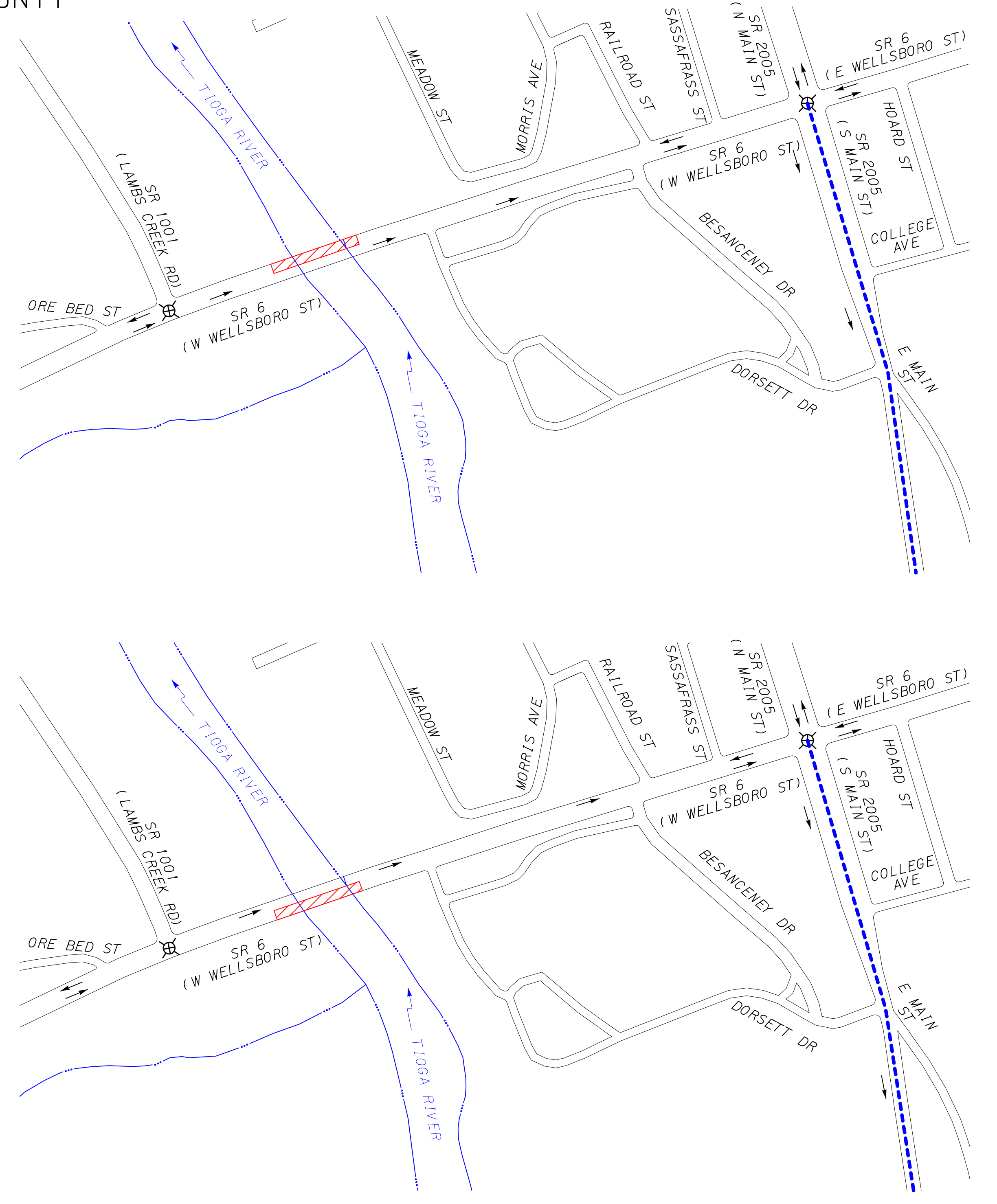
SR 6 SECTION 135 AND 179 / SR 2005 SECTION 026  
HIGHWAY RESURFACING PROJECT  
MANSFIELD BOROUGH AND RICHMOND TOWNSHIP,  
TIOGA COUNTY



STAGED CONSTRUCTION WITH  
DIRECTIONAL DETOUR

NOT TO SCALE

- LEGEND**
- PROPOSED WORK ZONE
  - COMPLETED IN PREVIOUS STAGE
  - TEMPORARY BARRIER
  - CHANNELIZING DEVICE



SR 6 SECTION 135/179  
WESTBOUND DETOUR PLAN

**LEGEND**

- U.S. /PA ROUTE
- TOWNSHIP/BOROUGH ROAD
- OTHER ROAD
- MUNICIPAL BOUNDARY
- STREAM
- DETOUR ROUTE (5.5 MI)
- TRAFFIC DIRECTION
- WORK AREA
- EXISTING TRAFFIC SIGNAL
- EXISTING FLASHING BEACON