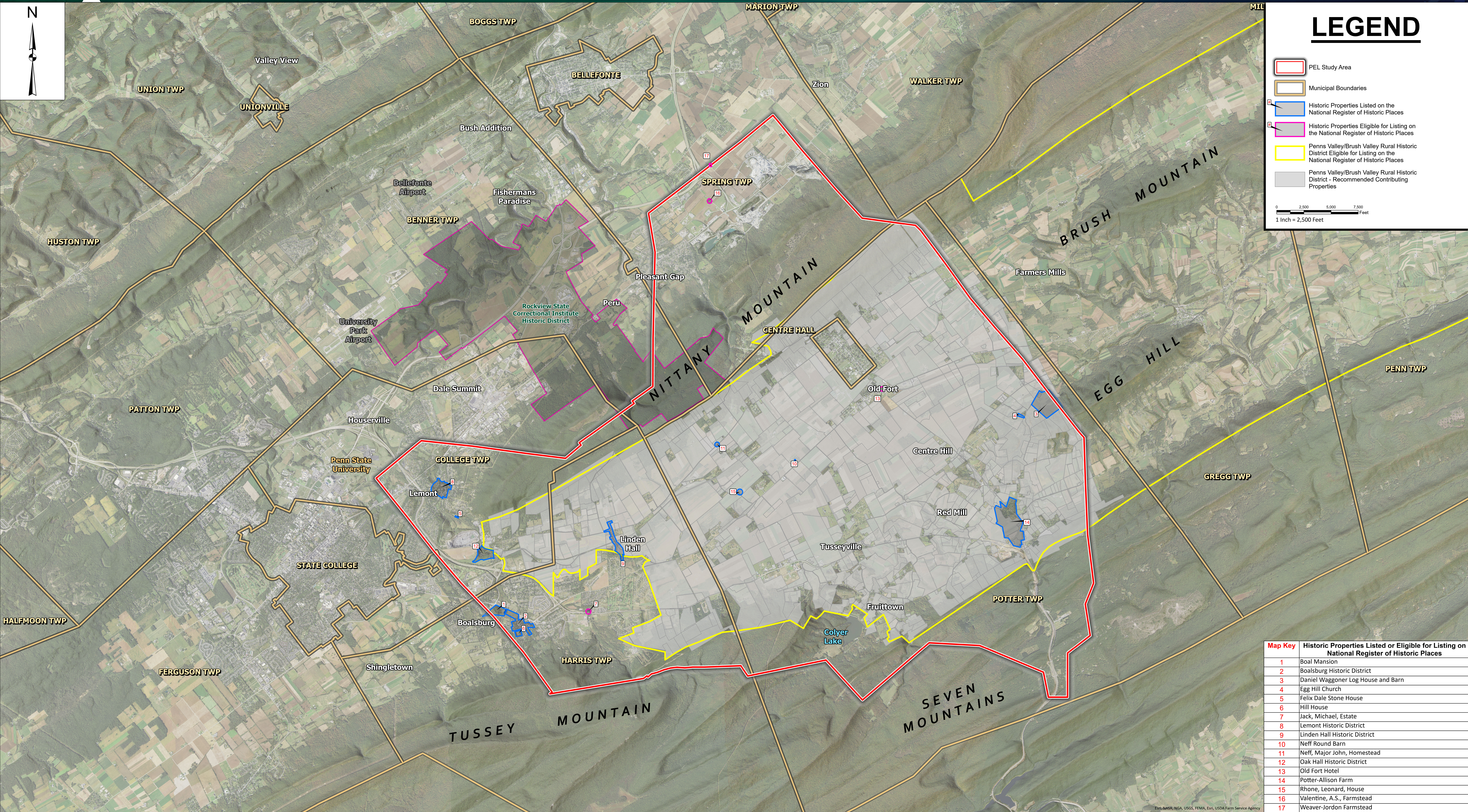


LEGEND

- PEL Study Area
 - Municipal Boundaries
 - Historic Properties Listed on the National Register of Historic Places
 - Historic Properties Eligible for Listing on the National Register of Historic Places
 - Penns Valley/Brush Valley Rural Historic District Eligible for Listing on the National Register of Historic Places
 - Penns Valley/Brush Valley Rural Historic District - Recommended Contributing Properties
- 0 2,500 5,000 7,500
1 Inch = 2,500 Feet



Map Key	Historic Properties Listed or Eligible for Listing on National Register of Historic Places
1	Boal Mansion
2	Boalsburg Historic District
3	Daniel Waggoner Log House and Barn
4	Egg Hill Church
5	Felix Dale Stone House
6	Hill House
7	Jack, Michael, Estate
8	Lemont Historic District
9	Linden Hall Historic District
10	Neff Round Barn
11	Neff, Major John, Homestead
12	Oak Hall Historic District
13	Old Fort Hotel
14	Potter-Allison Farm
15	Rhone, Leonard, House
16	Valentine, A.S., Farmstead
17	Weaver-Jordan Farmstead