

PENNDOT PROJECT INFORMATION



SR 2085 – A06

DECK JOINT REPLACEMENT PROJECT

**BIRMINGHAM BRIDGE over MONONGAHELA RIVER & CSX RAILROAD
CITY OF PITTSBURGH, ALLEGHENY COUNTY**

PROJECT TEAM

- Design Division
 - Direct questions to:
Andrew Bell, P.E., Project Manager at 412-429-5079
Engineering District 11-0
45 Thoms Run Road
Bridgeville, PA 15017
or at andrbell@pa.gov
 - Mark J. Young - District Environmental Manager
 - Todd Crouch- Environmental Supervisor - NEPA
- Press Office
 - Steve Cowan - District Press Officer



PURPOSE OF PRESENTATION & PROJECT INFORMATION

- SR 2086 Section A06 (Birmingham Bridge) Project
 - The purpose of this presentation is to introduce the project to the public, gather feedback, and present the proposed design.
 - The purpose of the project is to replace deteriorated and damaged deck joints on the Birmingham Bridge.



PROJECT LOCATION



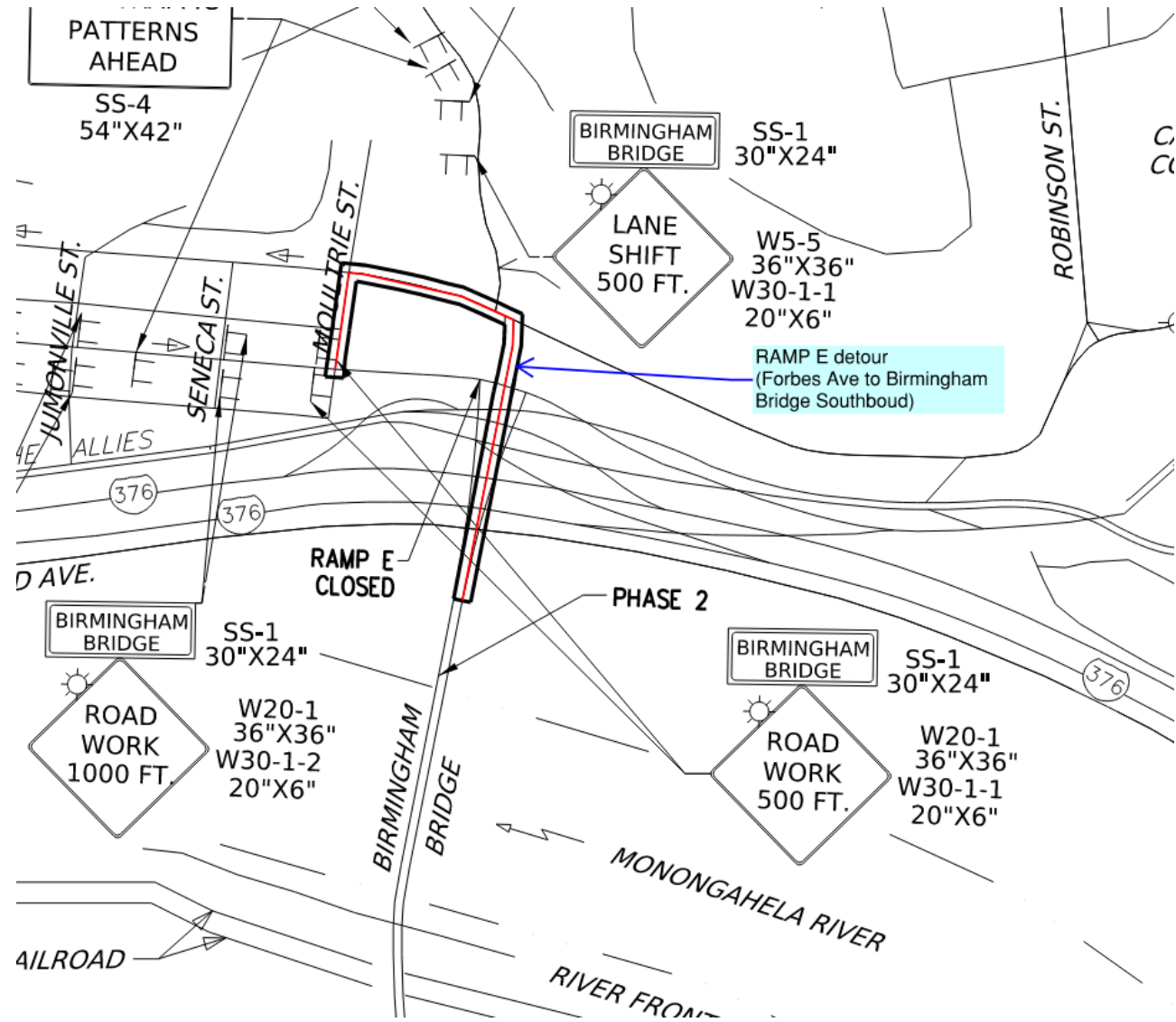
PROPOSED PROJECT IMPROVEMENTS

- Remove existing strip seals (9 each) and replace with new strip seal dams.
- Remove existing tooth dam (1 each) and replace with a modular expansion dam.
- Construction is anticipated to begin in summer/fall 2024 and end in summer 2025.
 - Construction will be completed in two (2) phases:
 - Phase 1 – Work on the Birmingham Bridge northbound from the Southside into the City (Main Span and Ramp F)
 - Approximately 52 Calendar Days
 - Phase 2 – Work on the Birmingham Bridge southbound from the City to the Southside (Main Span and Ramp E)
 - Approximately 56 Calendar Days
 - Crossovers will be utilized to accommodate traffic during each phase.
 - Ramps F and E will be detoured during each phase.
 - Each detour is approximately 0.5 miles
 - The bike lane in the Northbound lane will be detoured during Phase 2.
 - No work will take place on the sidewalk and pedestrians will not be impacted.

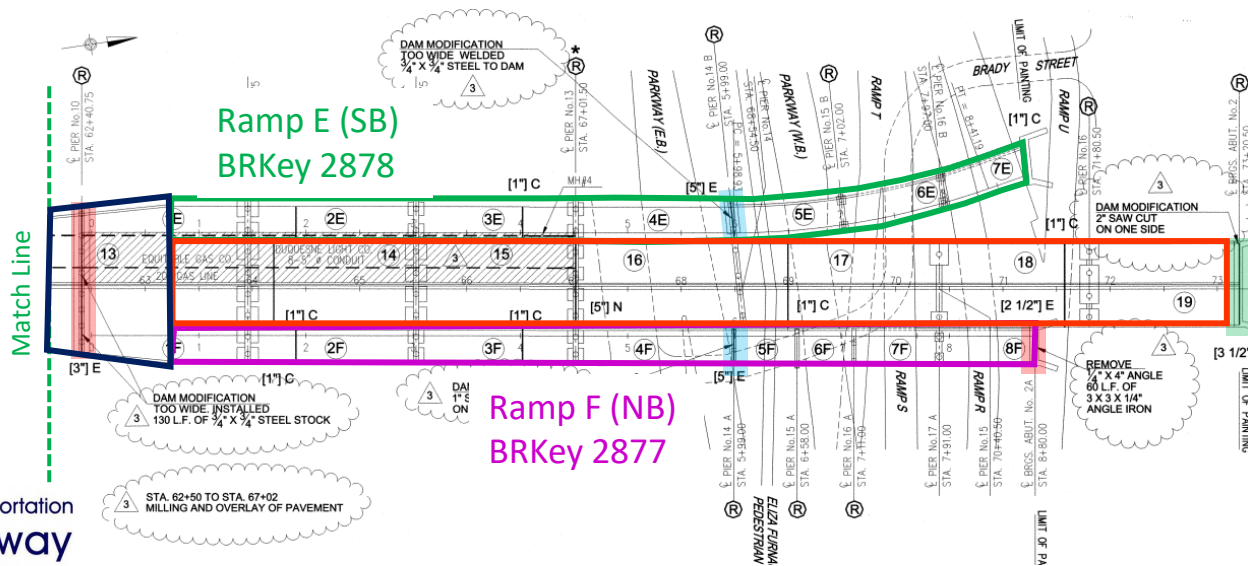
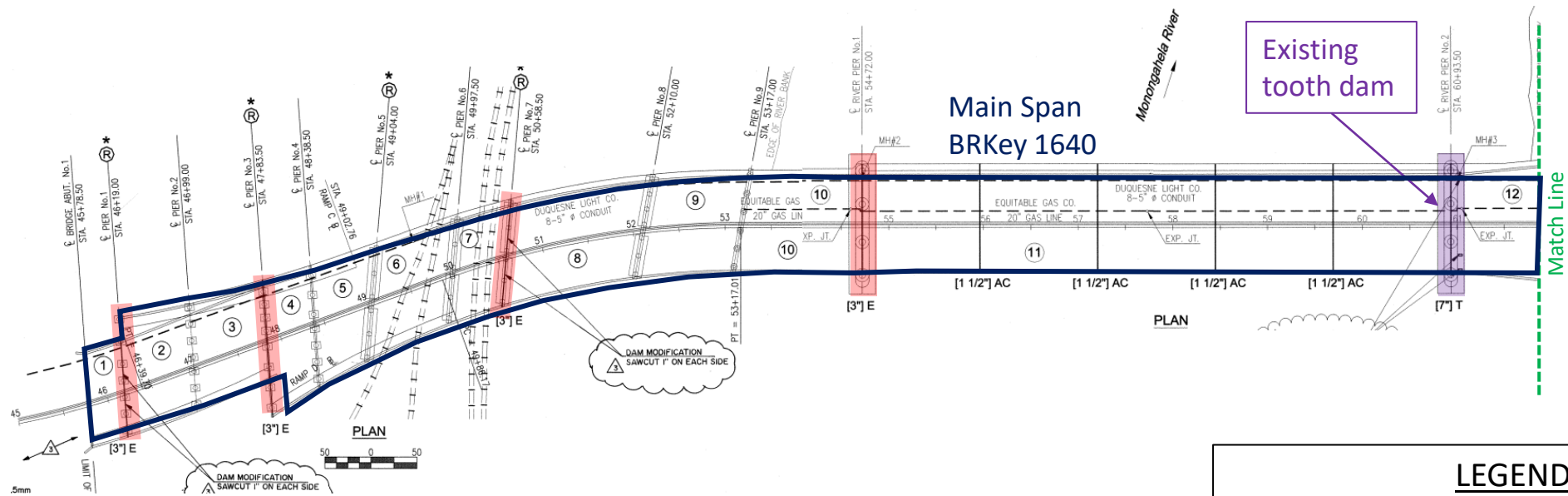


PROPOSED DETOUR – RAMP E

- Phase 2 – Work on the Birmingham Bridge southbound from the City to the Southside (Main Span and Ramp E)
- Ramp E detour:
 - From Forbes Ave, turn left on Moultrie St.
 - Right on Fifth Ave.
 - Right onto Birmingham Bridge Southbound



PROPOSED WORK AREA



LEGEND:

- 3" expansion dam replacement
- 5" expansion dam replacement
- 3.5" expansion dam replacement
- Modular expansion dam replacement

North Approach
BRKey 1642



NATIONAL ENVIRONMENTAL POLICY ACT (NEPA)

Public outreach begins with PennDOT Connects and extends into the **NEPA** (National Environmental Policy Act) process:

- PennDOT Connects is a project planning and development approach that engages local and planning partners by collaborating with stakeholders before project scopes are developed.
- NEPA requires agencies to integrate environmental values into their decision-making processes by considering the environmental impacts of their proposed actions and reasonable alternatives to those actions
- NEPA also includes public involvement activities and gathering feedback from the public
- This PowerPoint presentation is part of District I I-0's coordination with the public to obtain feedback on the project and to meet NEPA requirements.

