

PENNDOT PROJECT INFORMATION

McLaughlin Run Road Bridge #2 Replacement

SR 3004, Section A16

Bridgeville Borough,
Allegheny County



PROJECT TEAM

- Design Division
 - Direct questions to:
Rebecca Thompson– District Project Manager at 412-429-4945
Engineering District 11-0
45 Thoms Run Road
Bridgeville PA 15017
or rebthompso@pa.gov
 - Mark J.Young - District Environmental Planning Manager
 - Nick Krobot, P.E. – Environmental Project Manager
- Press Office
 - Steve Cowan - District Press Officer



PURPOSE OF PRESENTATION & PROJECT INTRODUCTION

- SR 3004 Section A16 (McLaughlin Run Road) Project
 - The purpose of this presentation is to introduce the project to the public, gather feedback, and present the proposed design.
 - The purpose of the project is to provide a sustainable crossing on SR 3004 (McLaughlin Run Road) over McLaughlin Run.



PROJECT LOCATION

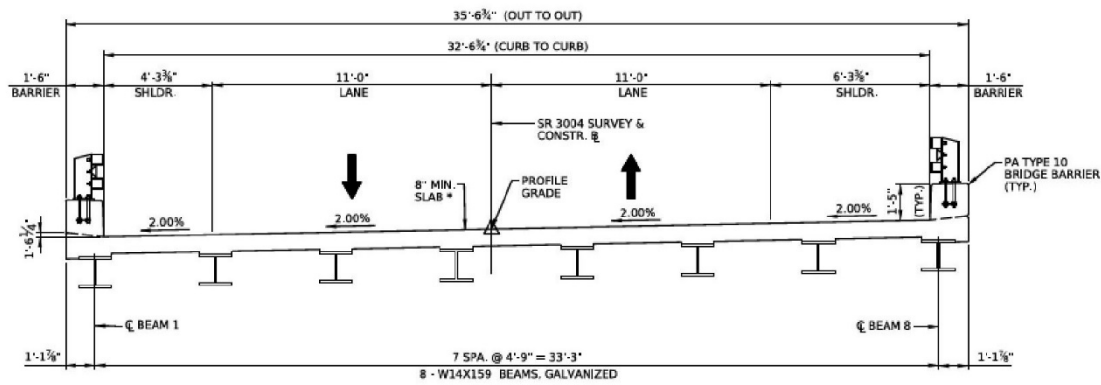


PROPOSED PROJECT IMPROVEMENTS

- Replace structure carrying SR 3004 over McLaughlin Run
- Reconstruct approach roadway on both sides of the structure
- Acquisition of Right-of-Way required for re-grading around structure replacement
 - Temporary Constructions Easements also needed
- Construction anticipated to begin in 2025
 - Road will be closed and detoured during construction
 - Proposed detour is approximately 5.5 miles

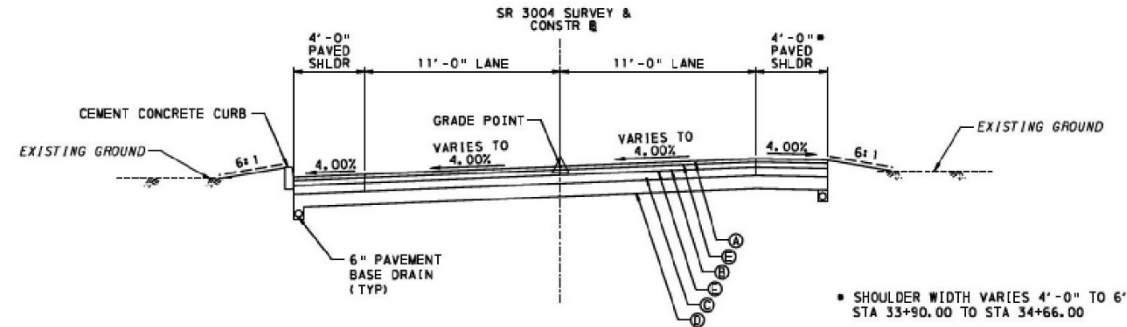


UNOFFICIAL



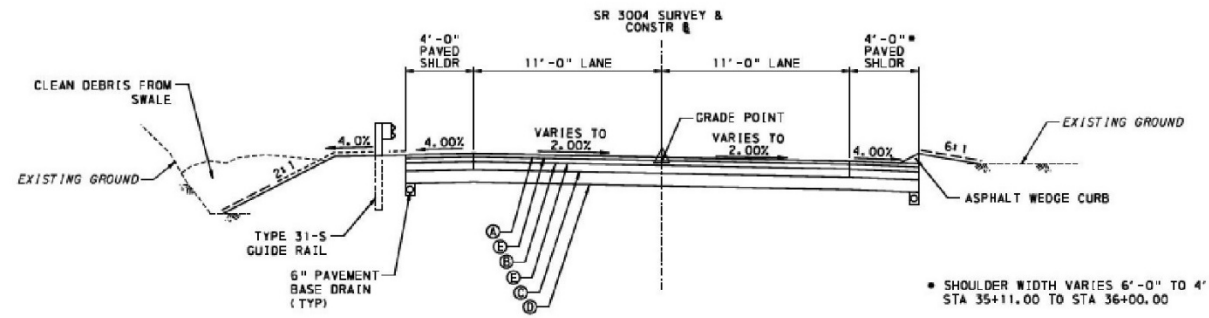
SR 3004 BRIDGE SECTION
 STA 34+66.00 TO STA 35+11.00
 NOT TO SCALE

* INCLUDES 1/2" INTEGRAL WEARING SURFACE



SR 3004 TYPICAL SECTION
 STA 33+90.00 TO STA 34+66.00
 NOT TO SCALE

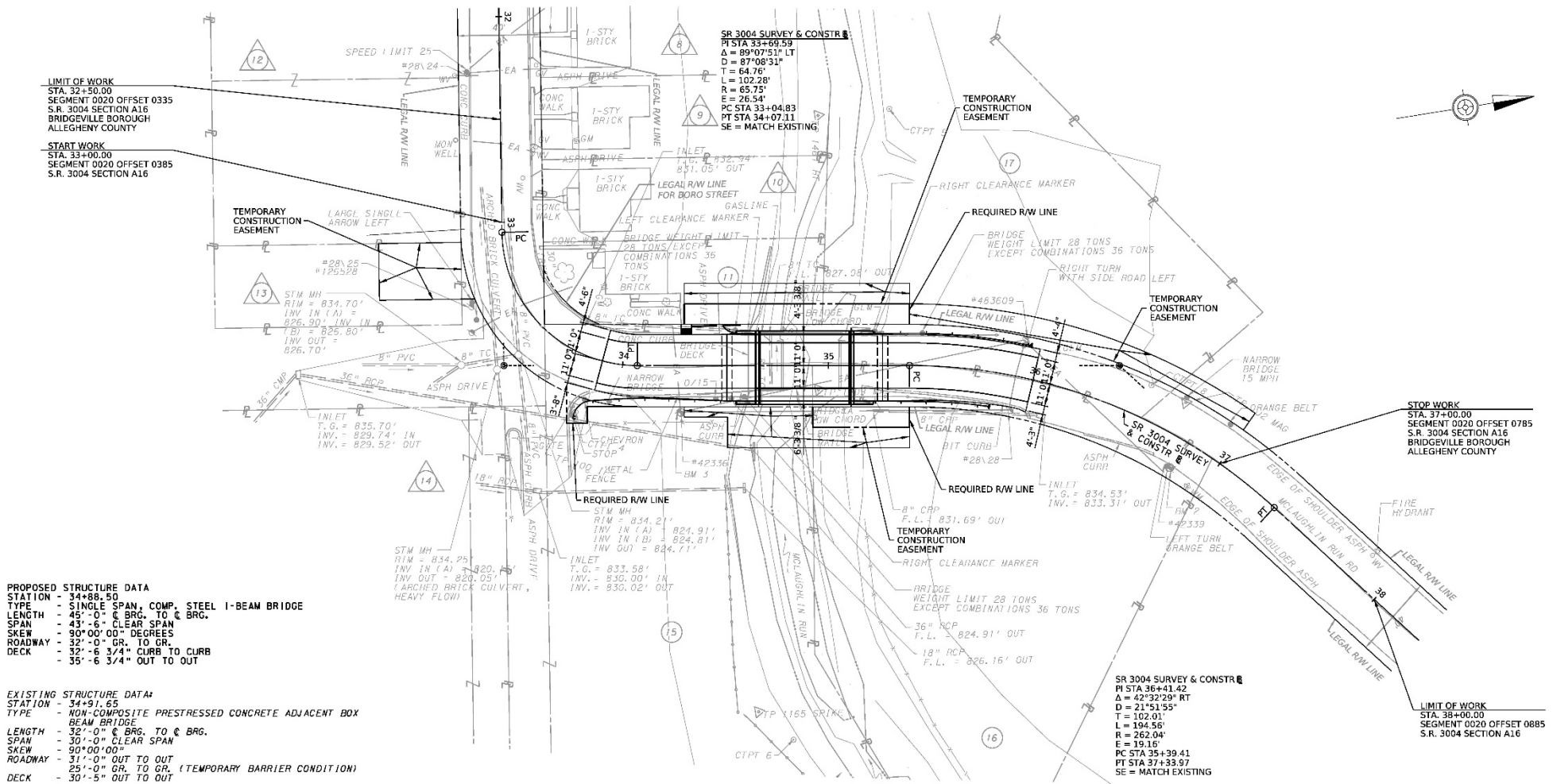
• SHOULDER WIDTH VARIES 4'-0" TO 6'-0", STA 33+90.00 TO STA 34+66.00



SR 3004 TYPICAL SECTION
 STA 35+11.00 TO STA 36+00.00
 NOT TO SCALE

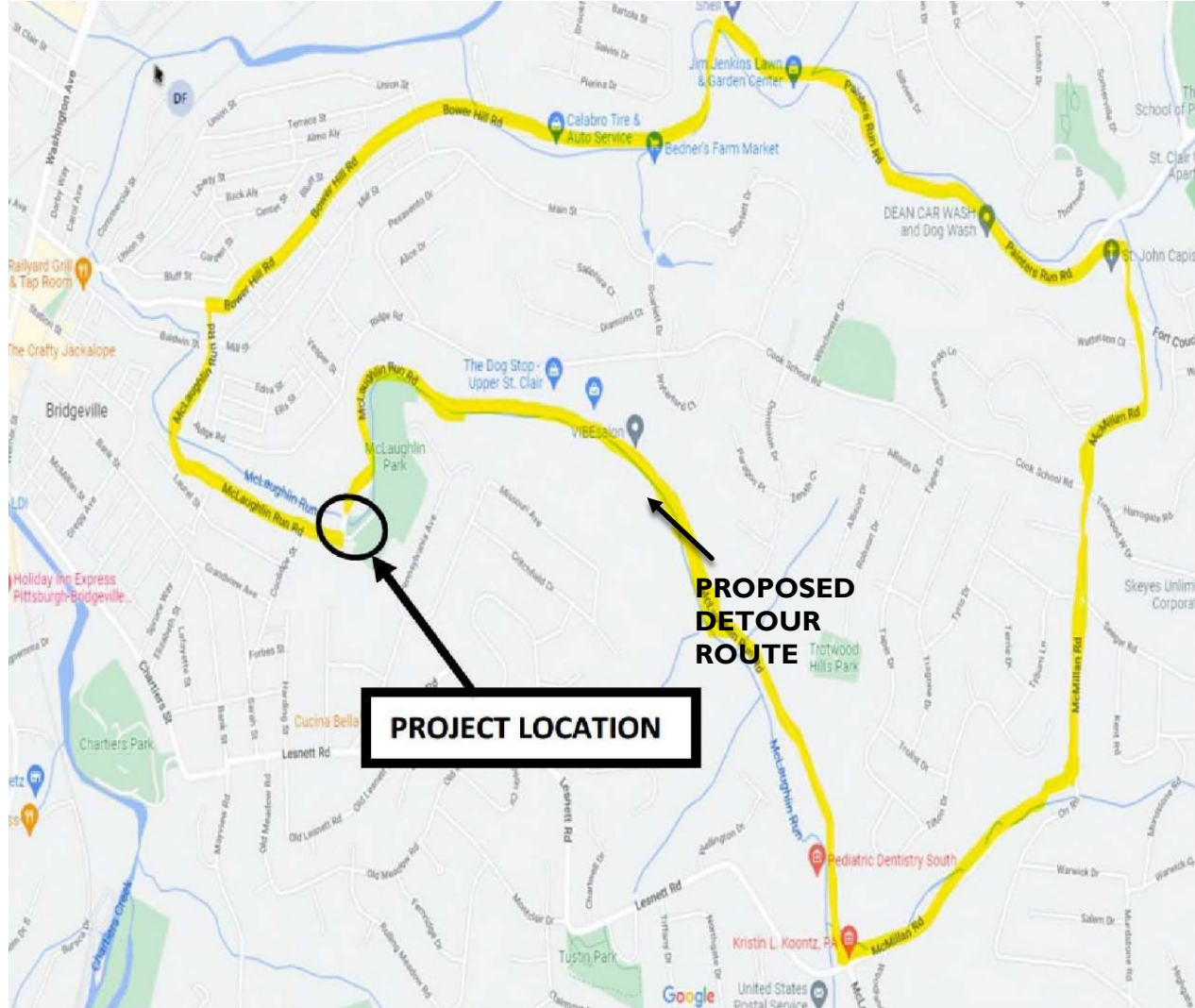
• SHOULDER WIDTH VARIES 6'-0" TO 4'-0", STA 35+11.00 TO STA 36+00.00

UNOFFICIAL PLAN



Proposed Detour Detour Route

- McLaughlin Run Road to
- Bower Hill Road to
- Painters Run Road to
- McMillan Road to
- McLaughlin Run Road
- Approx. 5.5 Total Miles



Proposed SR 3004 Detour

MC LAUGHLIN RUN PARK-SECTION 4(F)/6(F)

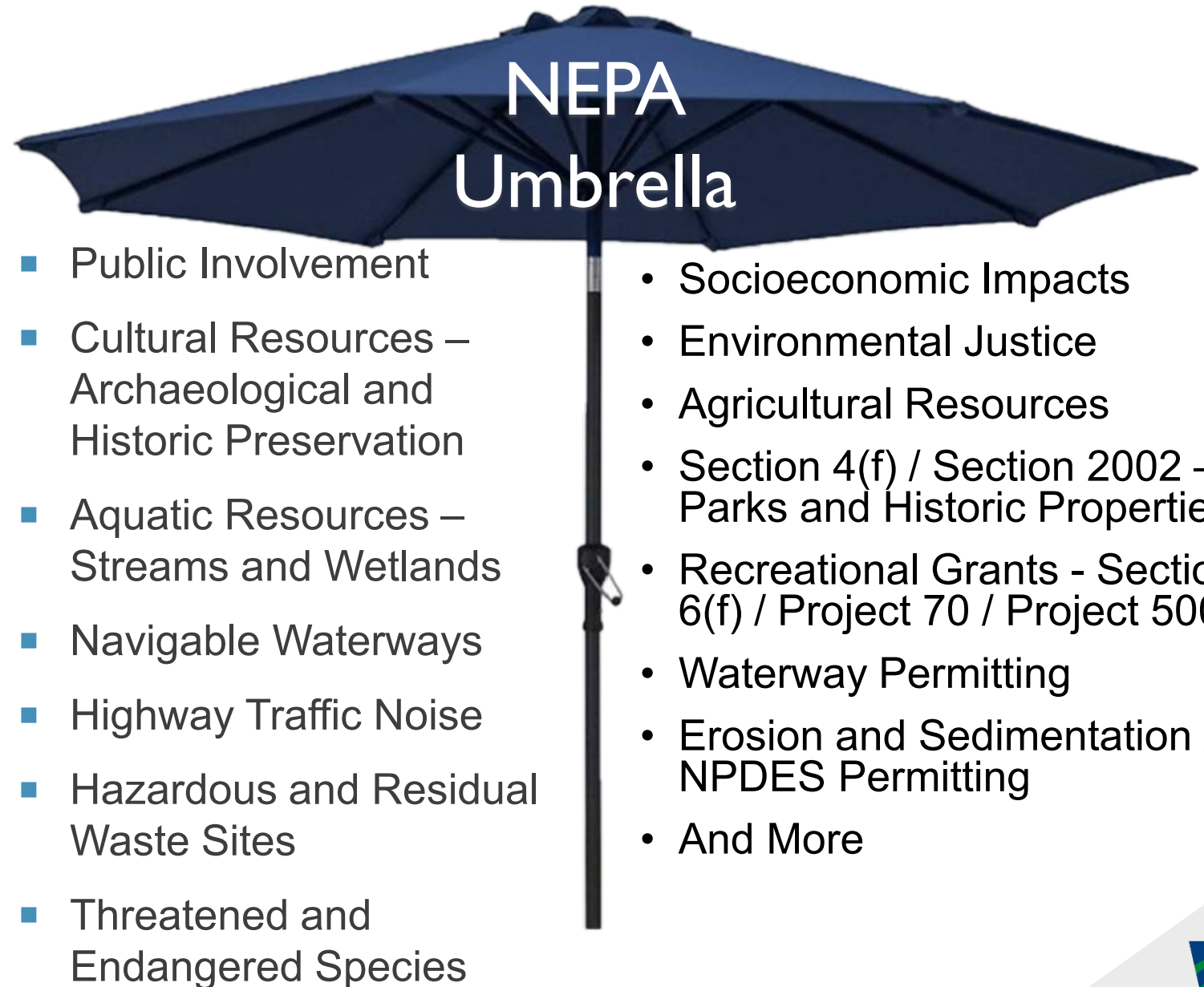
Environmental Impacts: Section 4(f)/6(f)

- The entire boundary of McLaughlin Run Park has been identified as a Section 6(f) property based on use of Land and Water Conservation Funds (LWCF) for improvements to the park.
- LWCF and the Section 6(f) legislation protects land acquired or improved with LWCF.
- The PA Department of Conservation and Natural Resources (DCNR) has been delegated authority by the National Parks Service (NPS) for regulation of LWCF properties and projects impacting them.
- PennDOT is coordinating with the regulatory agencies regarding the proposed Section 6(f) impacts.
- McLaughlin Run Park is also protected by Section 4(f) – the legislation protects publicly owned parks, recreational areas, wildlife and waterfowl refuges, or public and private historical sites.
- To accommodate the proposed guiderail radius and temporary construction activities at McLaughlin Run Park, the following right of way impacts are proposed:
 - 160.62 Square Feet right of way (for guiderail radius)
 - 934 Square Feet of temporary construction easement (Temporary Construction impacts are for less than a six month duration)
 - The “use” of McLaughlin Run Park is being considered *de minimus* as it does not appear to adversely affect the features, attributes, or qualities that qualify McLaughlin Run Park for protection under Section 4(f)
- Under Section 4(f), the public must be afforded an opportunity to review and comment on the effects of the project on the protected activities, features, and attributes of the property.

NATIONAL ENVIRONMENTAL POLICY ACT

Public outreach begins with PennDOT Connects and extends into the **NEPA** (National Environmental Policy Act) process:

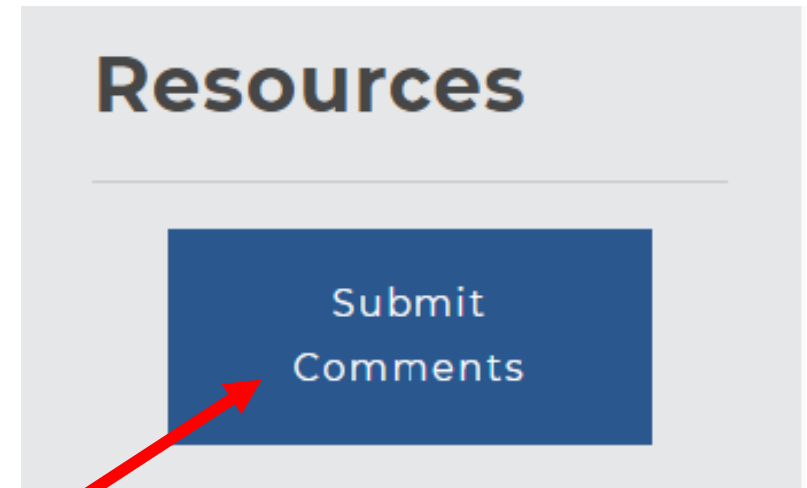
- PennDOT Connects is a project planning and development approach that engages local and planning partners by collaborating with stakeholders before project scopes are developed.
- NEPA requires agencies to integrate environmental values into their decision-making processes by considering the environmental impacts of their proposed actions and reasonable alternatives to those actions
- NEPA also includes public involvement activities and gathering feedback from the public
- This PowerPoint presentation is part of District 11-0's coordination with the public to obtain feedback on the project and to meet NEPA requirements.



PROJECT SURVEY

PLEASE COMPLETE THE PROJECT SURVEY

- The project survey can be found on the project website.
- Click the tile under Resources labeled “Submit Comments” on the right side of the screen.



Click Here