



# PennDOT Pathways Major Bridges P3 Initiative

*Dominion Blvd, Chesapeake, VA  
Design-Build bridge replacement  
funded by tolls*

November 12, 2020

# Summary

- ✓ PennDOT is currently carrying an annual funding gap of over \$8.1B to maintain and improve state-owned bridges and highways
- ✓ PennDOT will consider applying alternative funding mechanisms for major bridge replacements or rehabilitations on interstates and expressways through a bridge-appropriate P3 delivery model

*DFW Connector, Dallas, TX  
Design-Build highway reconstruction  
that included priced express lanes*



*SR 125 South Bay Expressway, San Diego, CA  
P3 toll road now operated by a public authority*

# Goals

- ✓ Accelerate renewal of major bridges
- ✓ Enhance public safety
- ✓ Avoid costly detours due to weight restrictions or closures of bridges
- ✓ Create a financially sustainable model for the Commonwealth's major bridges on interstates and expressways

# Principles

- ✓ Should be considered for major bridge replacement or rehabilitation projects, including associated roadwork
- ✓ Through 23 U.S.C. Section 129 apply reasonable user fees that focus on cost recovery of construction, operations and maintenance while minimizing diversion
- ✓ Advertised as individual bridges or as packages of bridges
- ✓ Geographically balanced across the Commonwealth
- ✓ Mitigate against disproportionate socioeconomic impacts



*Audubon Bridge, Pointe Coupee, LA  
Design-Build for accelerated bridge program  
© Louisiana TIMED Managers*

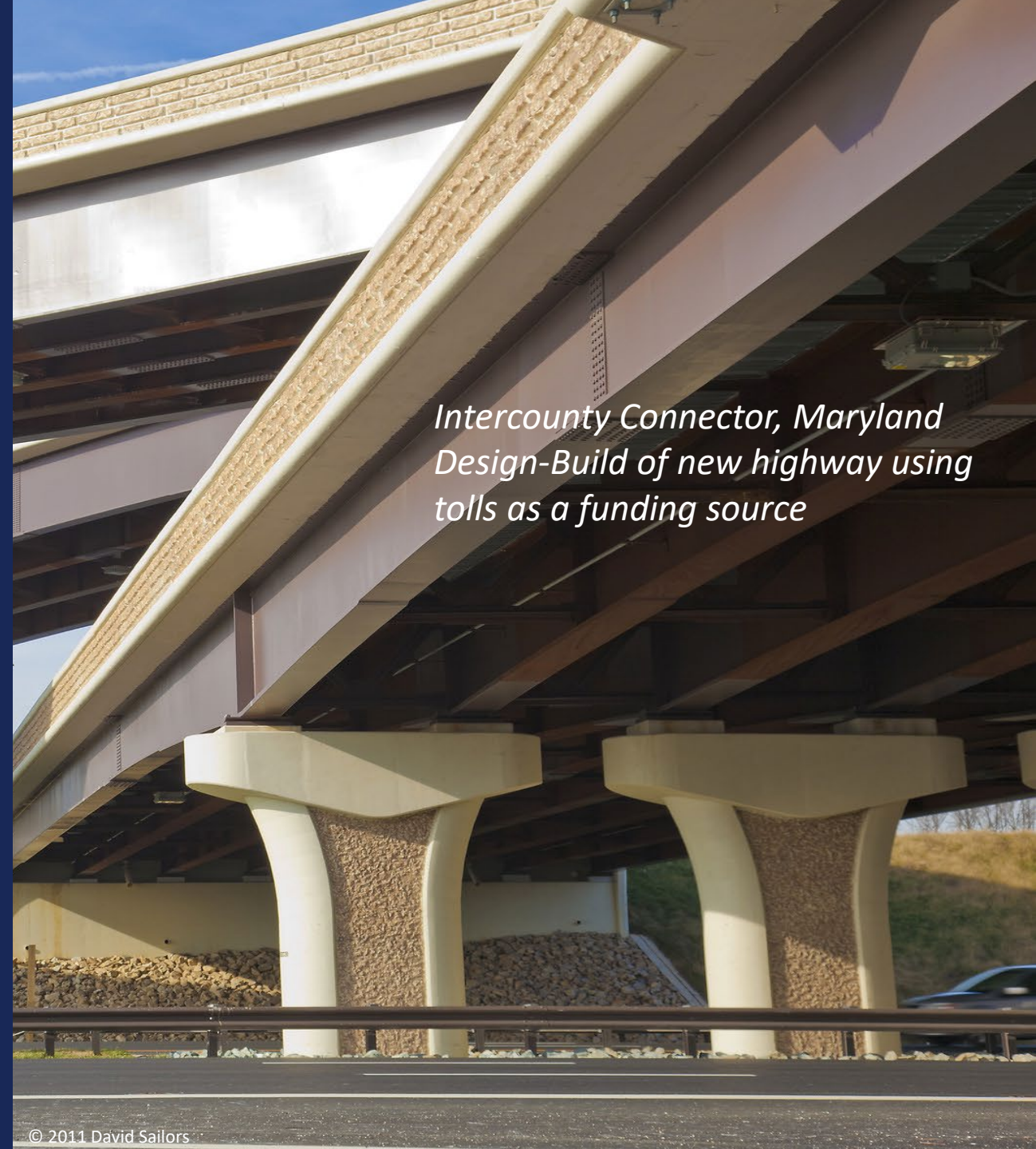
# Benefits

*SR 520 Floating Bridge, Seattle, WA  
Design-Build replacement of bridge  
using tolls*

- ✓ Accelerates a number of critical bridge projects
- ✓ Creates jobs
- ✓ Secures a fair, sustainable, user fee-based funding source
- ✓ Leverages private sector innovation and investment in assets owned by PennDOT
- ✓ Ensures the continued stewardship of transportation assets to support the Commonwealth's economic vitality and development

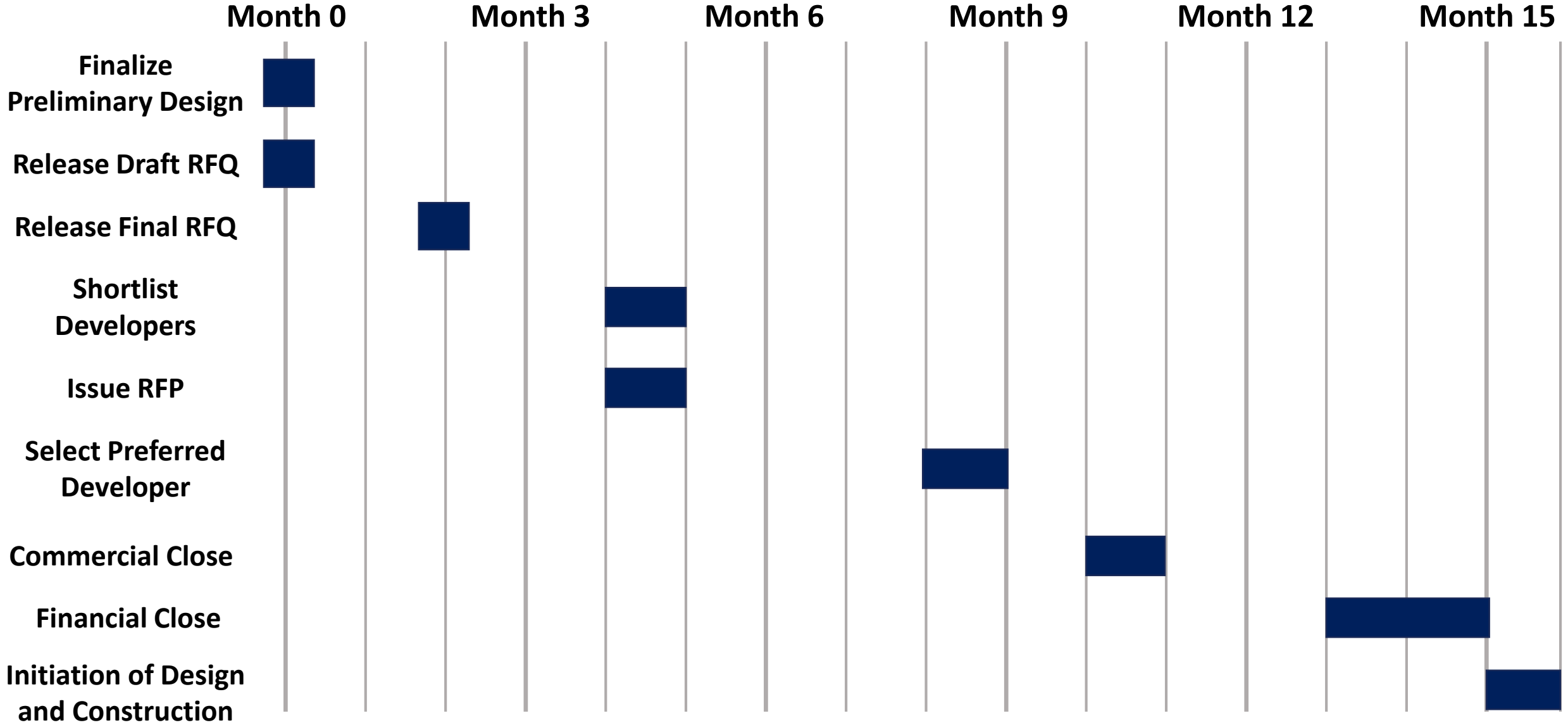
# Benefits (cont.)

- ✓ Potentially creates cost savings with P3 delivery through:
  - ✓ Schedule
  - ✓ Economies of scale
  - ✓ Historically low interest rates
- ✓ Reduces collection costs through cooperation with Pennsylvania Turnpike Commission



*Intercounty Connector, Maryland  
Design-Build of new highway using  
tolls as a funding source*

# Typical Bridge Package Schedule



The P3 Office is recommending that the PennDOT Pathways Major Bridge P3 Initiative proceed using the appropriate contracting P3 delivery model for each interstate or expressway bridge and associated roadwork package, as defined in Act 88 of 2012 and following the process as delineated in the PennDOT P3 Implementation Manual.

# Request to the Board

---





# PennDOT Pathways Major Bridges P3 Initiative

*Dominion Blvd, Chesapeake, VA  
Design-Build bridge replacement  
funded by tolls*

November 12, 2020