



pennsylvania
DEPARTMENT OF TRANSPORTATION

PENNSYLVANIA NATIONAL ELECTRIC VEHICLE INFRASTRUCTURE (NEVI) PROGRAM

**ROUND 1A WEBINAR
NOVEMBER 20, 2023**



INTRODUCTION

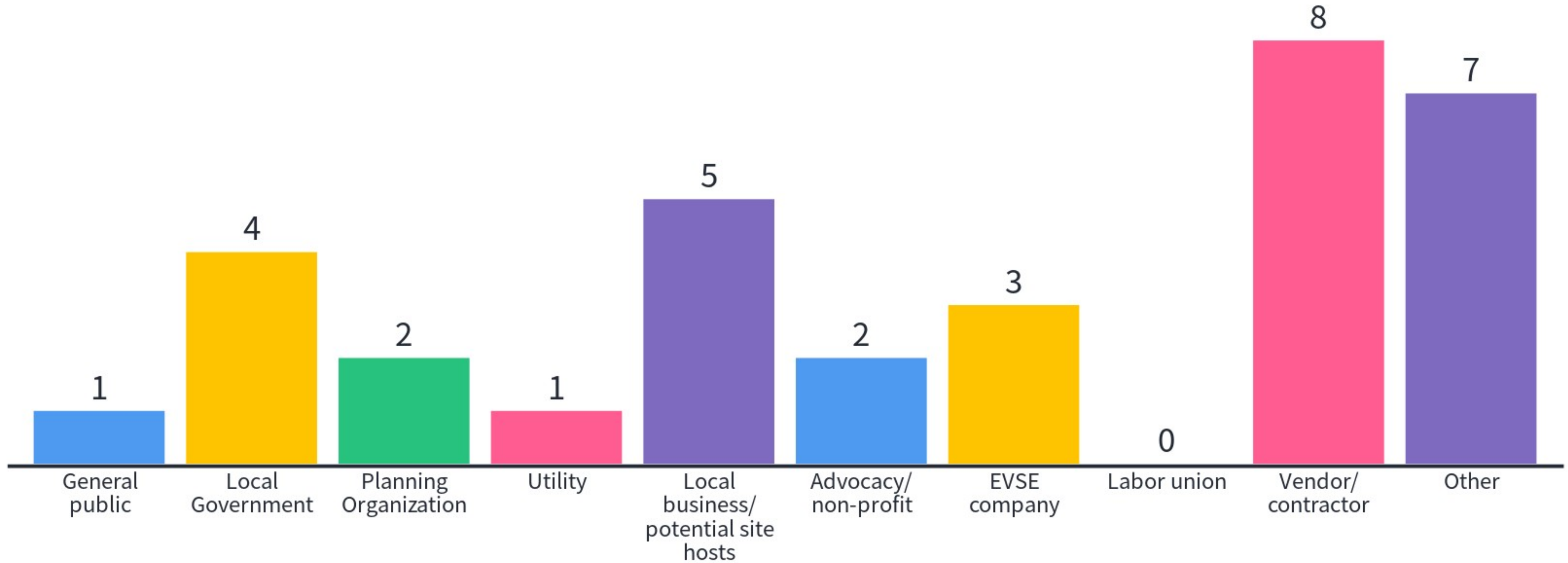
- Today's webinar will be recorded and posted on PennDOT's EV webpage.
- Participant camera and mics are disabled.
- Please feel free to type comments and questions in the chat anytime. “Reactions” are also encouraged.
- Safety First – tips for safe holiday travel

TODAY'S AGENDA

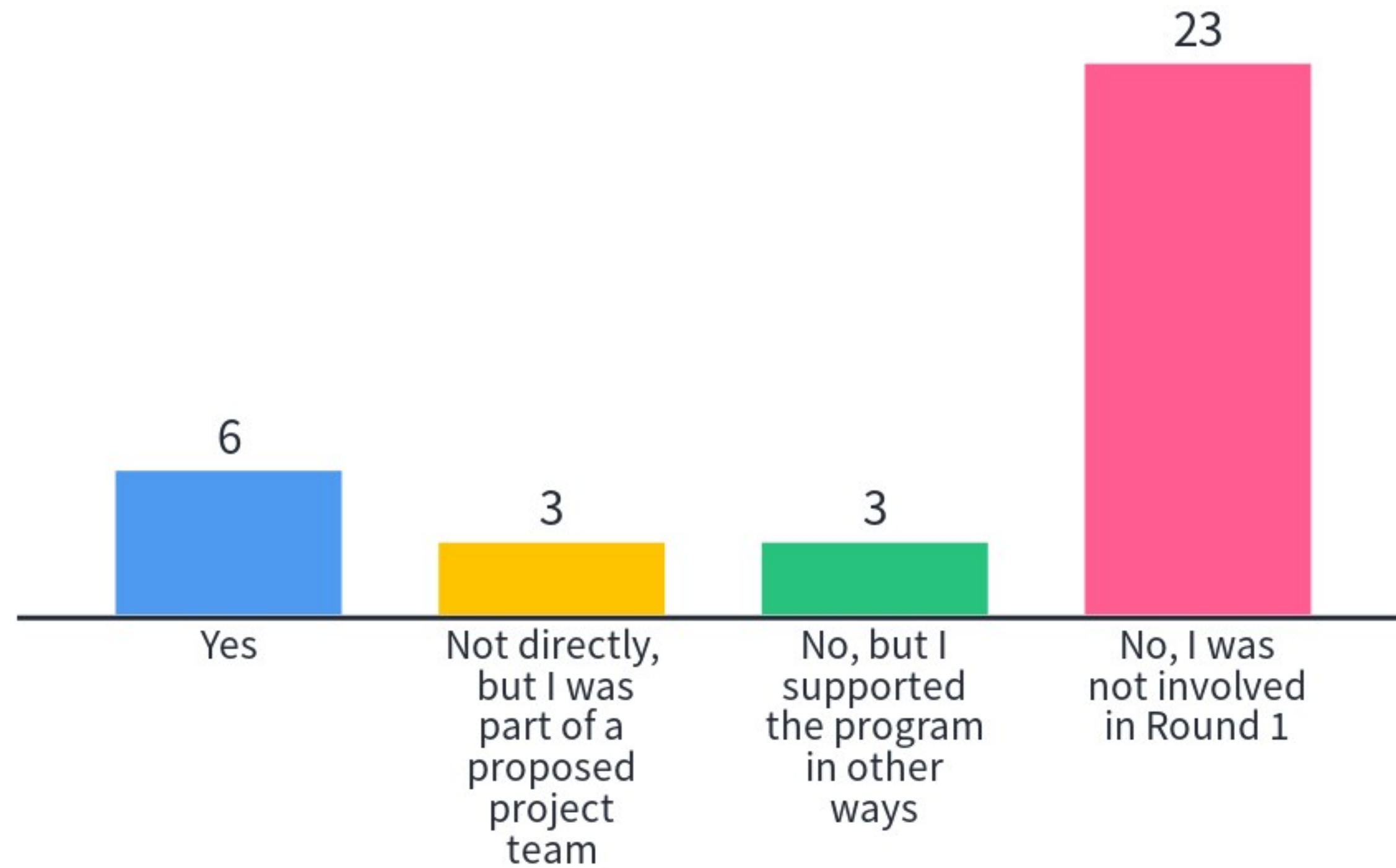
- EV Registrations Update
- National Electric Vehicle Infrastructure (NEVI) Program
 - Summary of Round 1
 - Round 1A Updates
- Open Questions and Answers



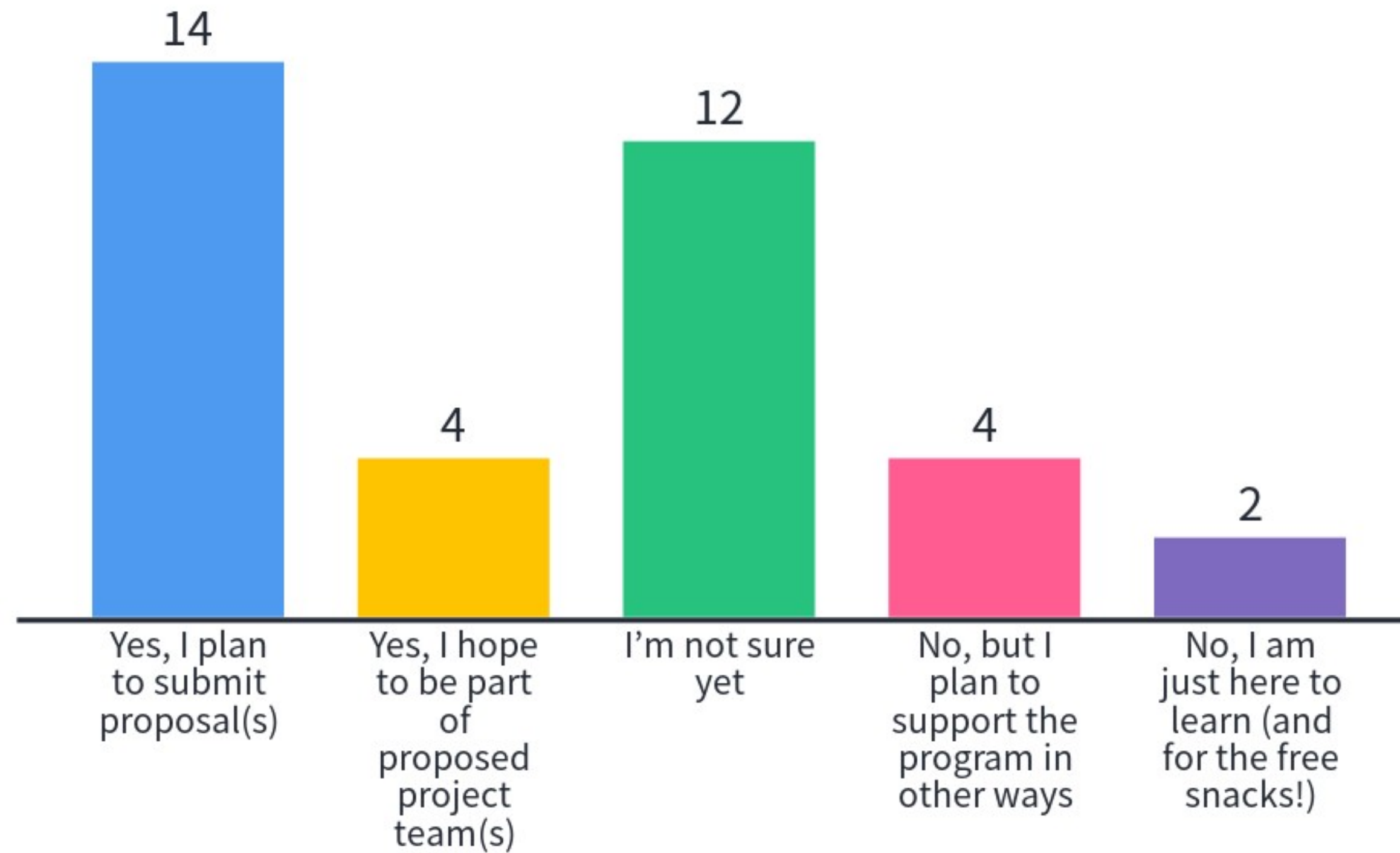
Who do you represent?



Did you apply for PennDOT's Round 1 NEVI program?



Do you plan to pursue PennDOT Round 1A NEVI funds?



PENNSYLVANIA EV REGISTRATION UPDATE

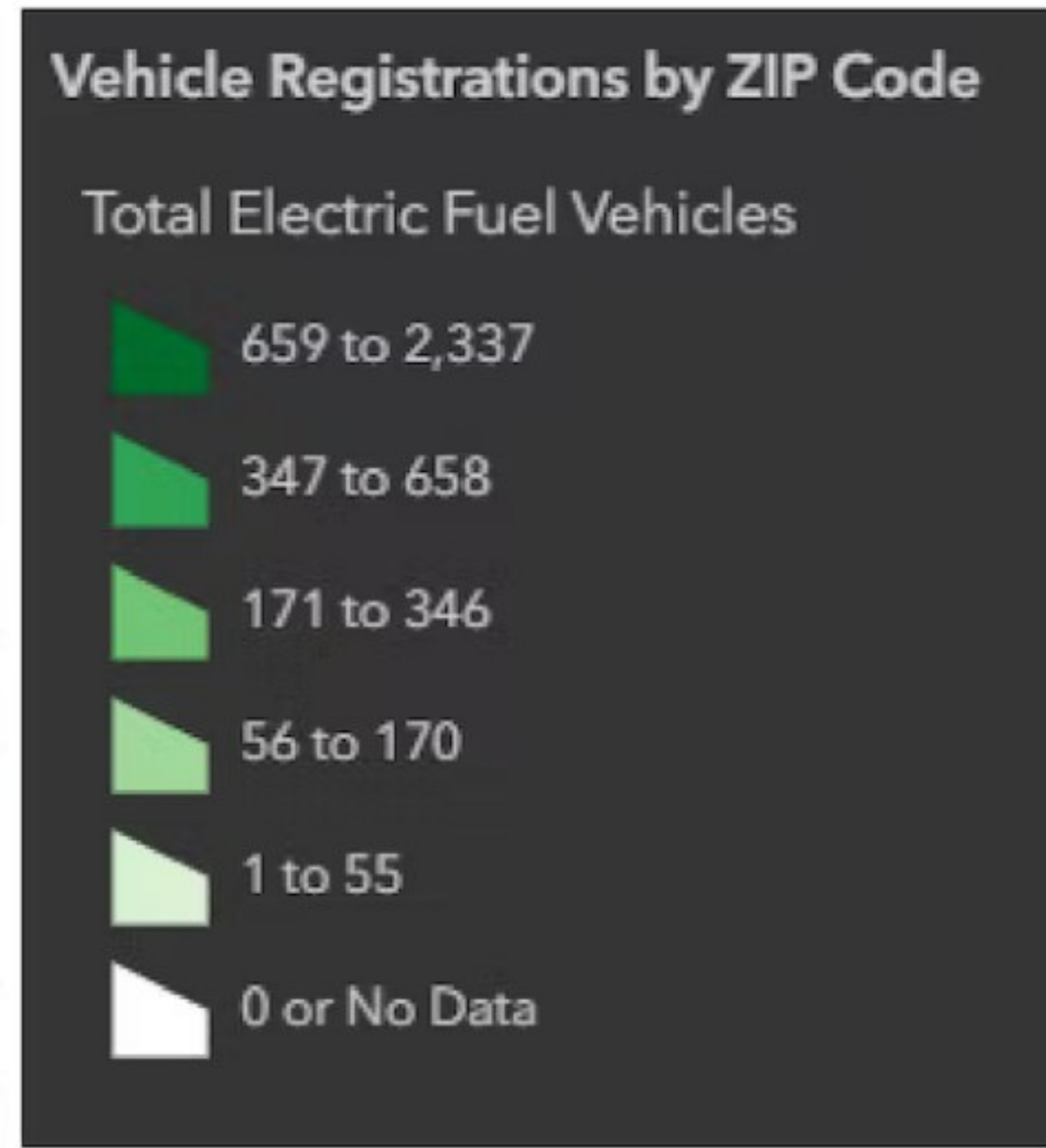
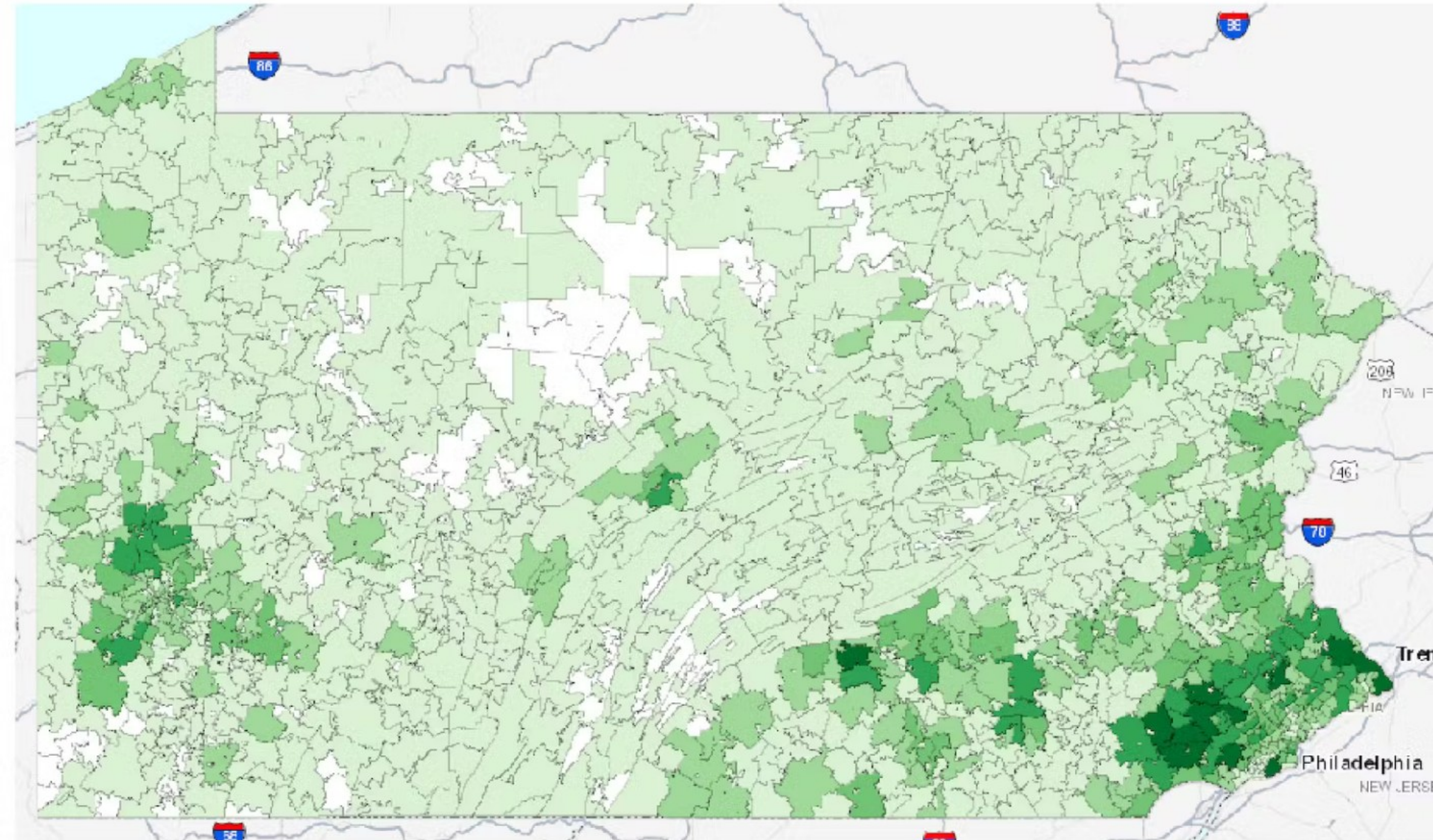
EV REGISTRATIONS IN PA

Fuel type	10/31/2023	Percent Increase since March 7, 2023
BEV	59,332	35.7%
PHEV	34,710	41.41%
HEV	262,345	18.35%
Fuel Cell	1	0.0%
Total	355,388	22.88%

Source: PennDOT registration database



EV REGISTRATIONS IN PA



[PennDOT EV Registrations Interactive Map](#)



NATIONAL ELECTRIC VEHICLE INFRASTRUCTURE (NEVI)

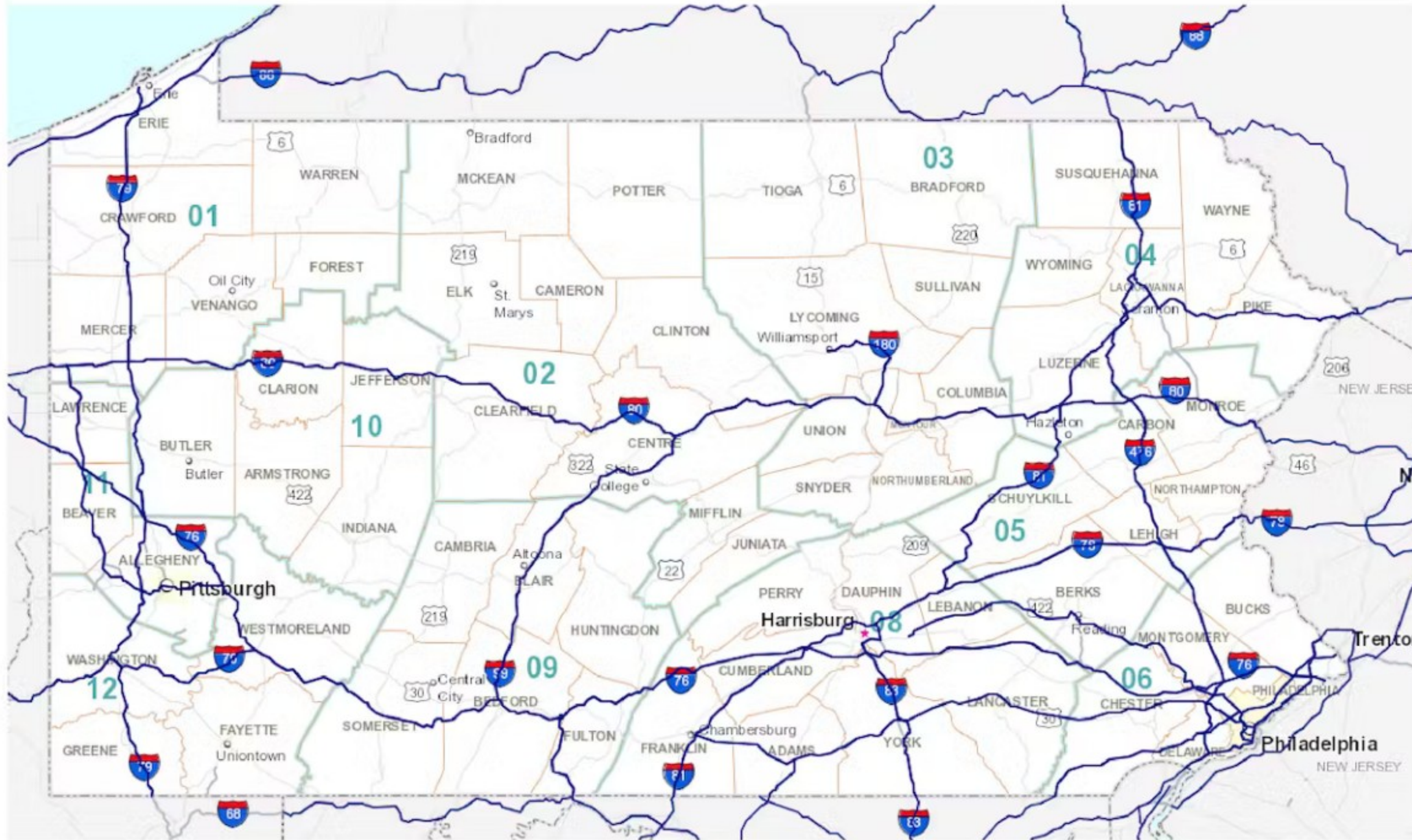
OVERVIEW OF PA'S NEVI FORMULA PROGRAM



- Provides PA \$171.5 million over next 5 years for electric vehicle (EV) infrastructure
 - Federal Fiscal Year 2022 - \$25.4 million
 - Federal Fiscal Years 2023-2026 - \$36.5 million annually
- Pennsylvania Program Document Released – January 6, 2023
 - Round 1 Conditional Awards Announced – August 14, 2023
- PennDOT submitted NEVI state plan update on August 1, 2023
 - Plan approved by FHWA on Sept 29, 2023
- The plan is an evolving document updated annually
- Current plan supports allocation of federal funds for federal fiscal year (FFY) 2024



ALTERNATIVE FUEL CORRIDORS



- PennDOT has nominated corridors over 7 rounds - includes interstates and portions of US 30, US 15, Route 1, Route 422, and Interstate 180 - over 1,800 miles of roadway
- NEVI funding must be applied to AFCs until a **“Build-Out”** certification by FHWA

YEARS 1-2 CHARGING FOCUS

DC Fast Charging

Public

4 ports

CCS Connectors

At least 150kw power per port
(600kw total)

**Within 1-mile of highway, 50 miles
of the next station**

How to Charge Your EV



Charge Time



Charging Locations

Level 1

3.5 - 6.5 miles
Per Hour

Residential,
Workplace

Level 2

14 - 35 Miles
Per Hour

Residential,
Workplace,
Destinations

**DC Fast
Charge**

200+ miles
Per Hour

Highways,
Communities,
Destinations

PENNDOT NEVI ROUND 1 CONDITIONAL AWARDS

ROUND 1 SELECTION PROCESS

Project selections were based on:

- Build-out AFC network (gaps less than 50 miles and no farther than 1 mile from exit)
- Good customer experience for charging users, including safety
- Consistent reliable charging network
- Variety of funding recipients
- Positive impacts on local economy and workforce opportunities
- Equity/J40 – which includes a welcoming environment safe and accessible for all



- Total Requested Amount: \$165 Million
 - Approximately \$56 million for AFC build out, spread across 2 rounds.
 - Average cost ask~ \$650K
- Total Unique Submissions: 271
 - Not Eligible: 3
 - Organizations: 30

ROUND 1 SELECTION - PRELIMINARY



Recipient	Total
Tesla	10
Applegreen	6
Sheetz	6
Electrify America	4
Francis Energy	4
TA Operating LLC	4
Wawa	4
Love's Travel Stops and County Store	3
Pilot Travel Centers	3
Raceway Management Company	3
BP Products North American	2
6406 Truck Plaza LLC	1
Alnajuk, LLC	1
EVgo	1
Liberty Truck Center	1
Mirabito Holdings, Inc.	1
TH Minit Markets LLC	1
Universal EV LLC	1
Total Count	56

Site Host	Total
Fueling Station/Convenience Store	28
Travel Center/Truck Stop/Service Plaza	21
Shopping/Box Store	4
Restaurant	1
Grocery Store	1
Hotel	1

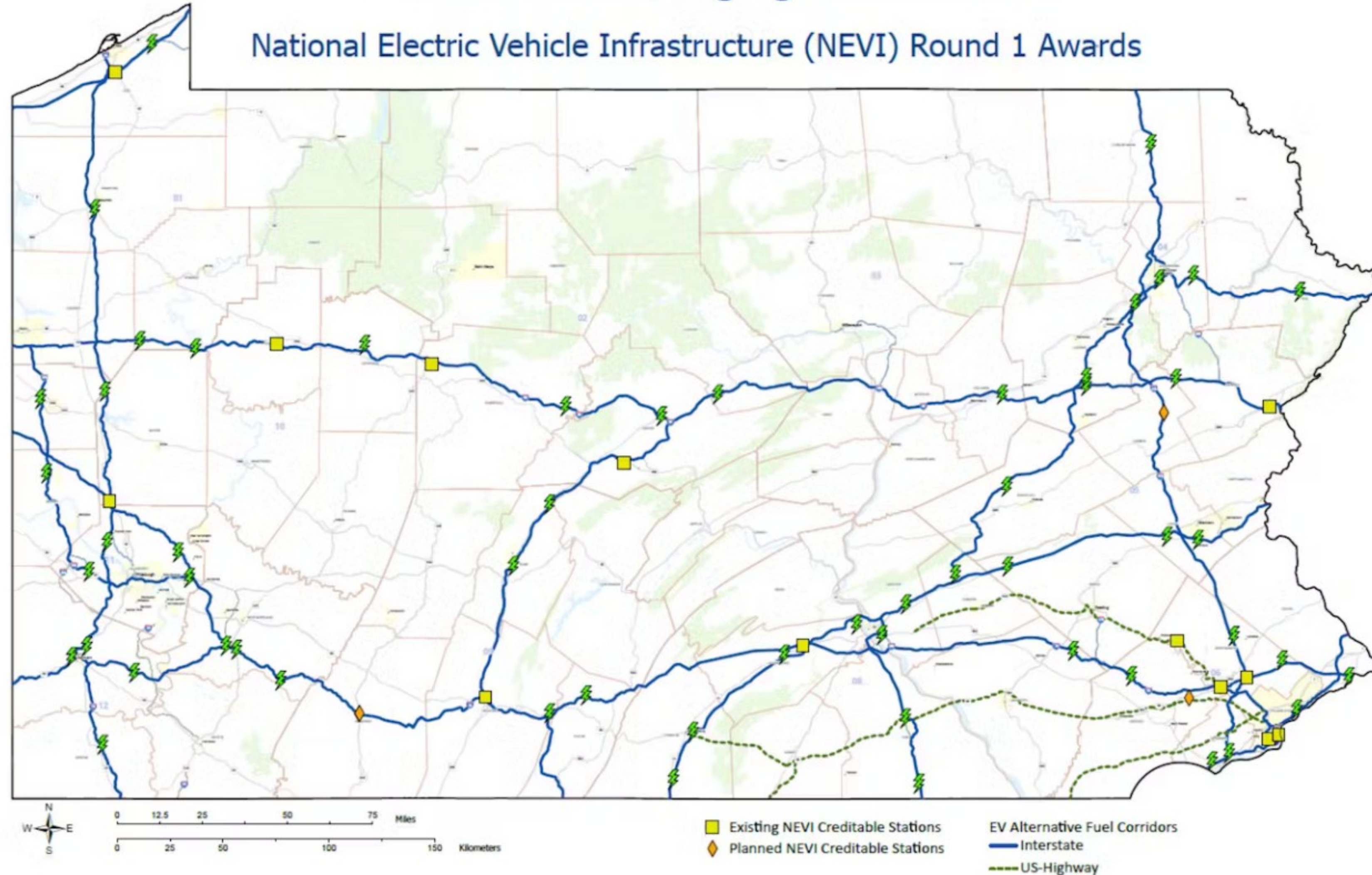
- Number of project selections: 56
- Number of unique recipients: 18
- Total funding award: \$34,821,981
 - Leaves ~\$22 million of FFY 22-23 funds for Round 1A
- 24 projects within Disadvantaged Communities



ROUND 1 CONDITIONAL AWARDS

Electric Vehicle Charging Stations 2023

National Electric Vehicle Infrastructure (NEVI) Round 1 Awards



- 56 projects within 37 counties
- \$34.8 million
- 24 projects in or within 1/2 mile of a Disadvantaged Community
- Typical Project Timeline 18-24 months

WHAT'S NEXT

- Support and oversee Round 1 projects
- Public outreach
 - 6 in-person community events
- Round 1A - anticipating about 25-30 sites
 - US Highway AFCs
 - Gaps remain from Round 1
 - \$22 million remaining from FFY 23 funds
- FFY24-26 : Approximately \$106 million for community deployments



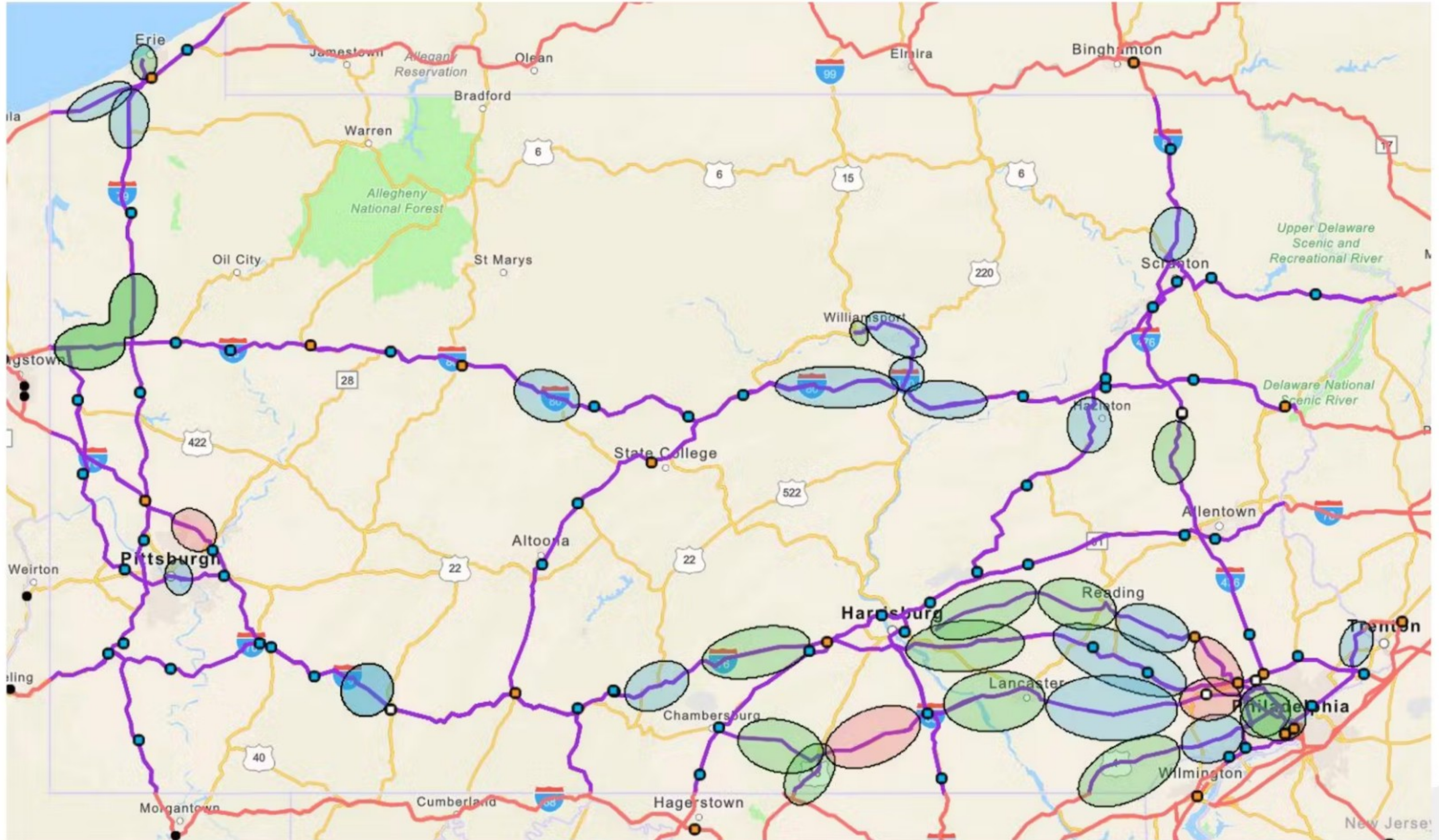
ROUND 1A OVERVIEW

ROUND 1A TIMELINE - PROPOSED

Activity	Date
Draft Priority Locations map released	October 3, 2023
Community outreach events (6)	October-November 2023
Networking event	November 13, 2023
Funding Opportunity released	November 13, 2023
Priority Locations map finalized	November 13, 2023
Deadline to submit technical questions	December 4, 2023
eGrants system opens for online proposals	December 11, 2023
Submit utility form to electric utility	Mid-November 2023 to Mid-January 2024
Deadline to submit online proposals	January 26, 2024, at 5:00 PM EST
PennDOT proposal review	February-April 2024
Conditional award notifications	May 2024
PennDOT NEPA process	May-July 2024
Agreement execution; notice to proceed	August-September 2024



ROUND 1A PRIORITY LOCATIONS



ROUND 1A UPDATES

STAYING SIMILAR TO ROUND 1

- Online submission process
- Utility form
 - Clarified that form should be submitted to utility 15 days prior to proposal deadline
- Minimum equipment requirements
- One proposal per project address
 - New exception to this is that Turnpike service plazas serving only one direction of travel must pair their proposal with the service plaza serving the other direction.
- Detailed scoring rubric included in Funding Opportunity



UPDATED FROM ROUND 1

- Clarified corridor-group priority levels
 - Priority 3 is now low-priority, rather than non-priority. Areas where PennDOT is not seeking a project are not assigned a corridor group.
- Proposal questions have been overhauled
 - The questions should be easier to answer and now ask for more specific information
- More information and graphics to assist Prospective Contractors
 - Graphic showing projects steps from Notice to Proceed to project completion
 - Final Site Design checklist
 - Charging Station Requirements checklist



UPDATED FROM ROUND 1

- NEVI legal Agreement updates
 - The legal Agreement is largely finalized, though subject to final reviews
- Scoring rubric changes
 - The scoring rubric is now more specific, and includes fewer 1- and 2-point scoring categories
 - The interchange score is now a “disadvantaged community score”. The exact project location is used to determine the score, rather than the nearest exit.



ROUND 1A SCORING RUBRIC

Scoring Category	Points
0. Minimum Requirements	0
1. Team Qualifications and Project Approach	10
2. Candidate Site Information	32
3. Site Readiness and Future Proofing	14
4. Equity and Sustainability	14
5. Safety and Economic Development	10
6. Project Costs	20
7. Additional Information	0
Total	100



ROUND 1A DETAILED RUBRIC

1. Qualifications and Project Approach [10pts]

ID	Element	Description	Score Breakdown Points	Max Points
1.1	Team Qualifications and Experience	<ul style="list-style-type: none">• Organizations involved in Project• Prior installations over past 5yrs• Additional relevant experience	<p>Opts: No prior experience and/or incomplete Project team</p> <p>0.5-6pts: Based on experience and qualifications</p>	6
1.2	Project Approach	<ul style="list-style-type: none">• Project planning• Uptime plan• Schedule and timeline• Risks	<p>Opts: Poor Project approach and/or limited planning</p> <p>0.5-4pts: Based on quality of Project approach elements and realistic complete schedule</p>	4

NEW IN ROUND 1A

- Site Host letter of commitment
 - Each proposal must include a letter of commitment (or signed Site Host Agreement), if the property owner is a different legal entity than the proposer
- Two (2) ADA spaces
 - PennDOT's Design Manual was updated in-between NEVI funding rounds. The new version requires a minimum of two (2) ADA parking spaces with "use last" signage, in line with US Access Board recommendations.
- Davis-Bacon compliant wage rates are now included in the funding opportunity document
 - Note that these wage rates will be updated 10 days prior to the proposal deadline if the US Department of Labor releases a new version



PENNDOT EV RESOURCES



NEVI ROUND 1A RESOURCES

- [PennDOT NEVI Round 1A Important Consideration for Prospective Contractors](#)
 - Two-page Round 1A summary including important requirements and other details
- [NEVI Round 1A Priority Locations map](#)
 - Map of locations eligible for Round 1A, and Disadvantaged Community scores by location
- [Pennsylvania Utility Coordination Contacts](#)
 - NEVI email contact for all major electric utilities in Pennsylvania
 - Submit utility forms via these email addresses
- [Electric Vehicle Infrastructure Training Program \(EVITP\) Certified Electricians in Pennsylvania](#)
 - List of all EVITP certified electricians in Pennsylvania



OTHER EV RESOURCES

- [Electric Vehicles and Alternative Fuels \(pa.gov\)](#)
- [National Electric Vehicle Infrastructure \(NEVI\) Formula Program \(pa.gov\)](#)
- [EV Mobility Plan \(pa.gov\)](#)
- [Drive Electric PA Coalition](#)
- [Electric Vehicles in PA](#)
- [PA EV Roadmap](#)
- [Alternative Fuels Incentive Grant](#)
- [Driving PA Forward](#)
- [PennDOT NEVI Conditional Award Map](#)
- [PennDOT EV Registrations Map](#)

QUESTIONS?

Any other questions you want to ask or feedback you want to share?

Will PennDOT require a minimum amperage on charging cables in order to ensure that cars receive a true 150kW charge?

Can we have both CCS and NACS on pedestals?

Are any bid bonds required as part of the application process?

Does the land have to be 1 mile away or not more than 1 mile away from the highway to be eligible?

Does PennDOT consider materials submitted in the application as legally binding or a legal commitment before execution of the funding agreement?

This funding opportunity is purely for level 3 DC Fast Chargers, correct?

Regarding the Priority Map shaded areas, how do we qualify if an applicant is qualified if the location is within the shaded area?

Will PennDOT consider redlines or negotiate amendments to the contract? If so, should proposers include redlines in their proposal, or is this process expected to occur post-award?

CONTACT INFORMATION

**PENNDOT EV TEAM CONTACT:
RA-PDEVCORRIDORS@PA.GOV**

