



PennDOT Connects Municipal Resources

2022 MUNICIPAL OUTREACH/ PEER EXCHANGE



1

SESSION OBJECTIVES AND OVERVIEW

To engage participants in an exchange of ideas on the best ways to capitalize on PennDOT Connects Municipal Resources as partners in success.



This session will highlight two of PennDOT Connects' overall goals:

- Strengthen communities' planning capacity and capabilities
- Enhance municipalities' ability to capitalize on a variety of funding sources



2

SESSION OBJECTIVES AND OVERVIEW

- Introductions
- PennDOT Connects Municipal Resources Overview
- Municipalities' Planning Capacity and Capabilities
- Community Focus: Funding
- Conclusion



3

PARTICIPANTS AND FACILITATOR

- Name
- Role and Organization
- Years Involved in Transportation



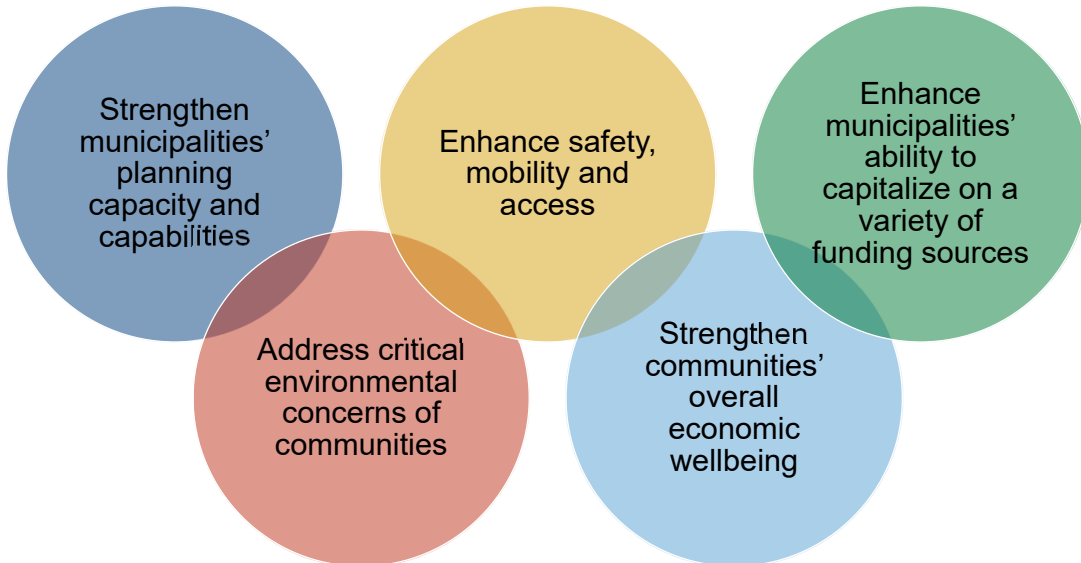
4

PENNDOT CONNECTS MUNICIPAL RESOURCES OVERVIEW

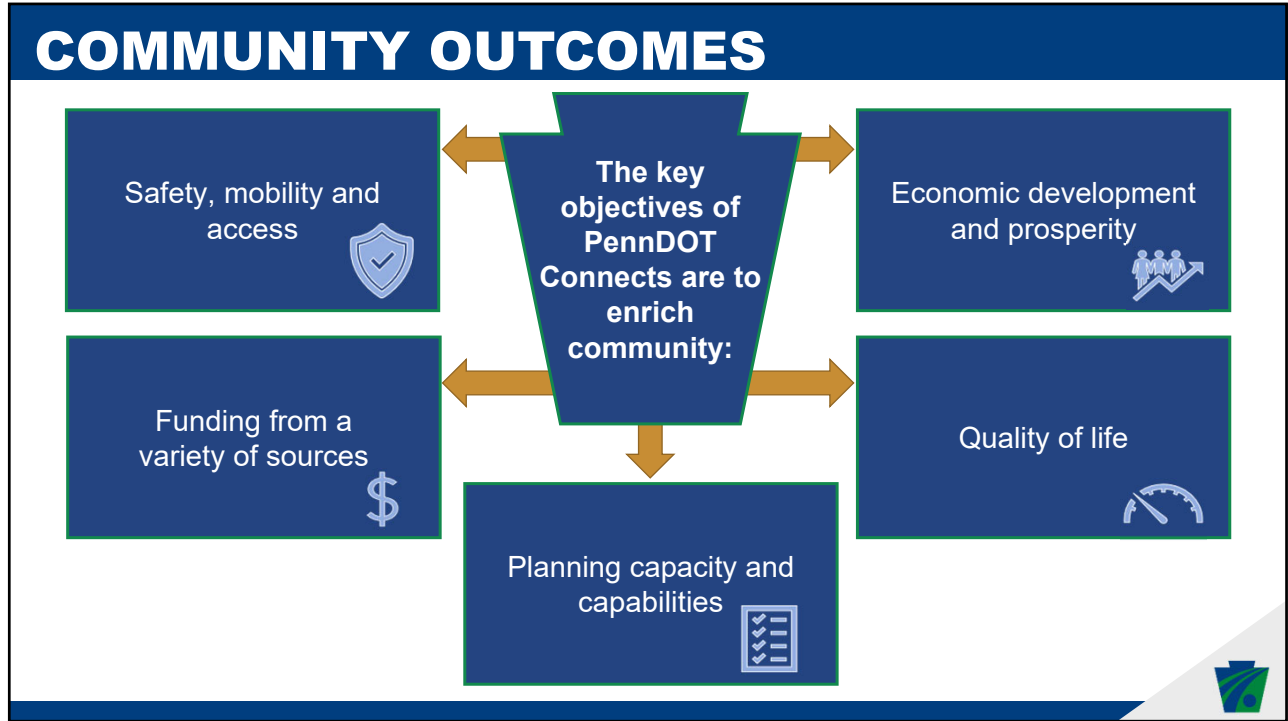


5

STRATEGIC GOALS



6



7

KEY ROLES

- MPO/RPO (Metropolitan Planning Organization/Rural Planning Organization) Administrative Staff
- PennDOT Municipal Services
- PennDOT Districts
- PennDOT Central Office and Connects Team

8

PROGRAM RESOURCES

- On-Demand Online Training
- Transportation and Land Use Planning Assistance
- Training Courses and Submodules
- Newsletter/Tech Sheet
- Meeting and Speaking
- PennDOT Connects Website



9

ON-DEMAND ONLINE TRAINING

Access Management Regulations and Coordinated HOP Processing	Integrating Transportation and Land Use in Comprehensive Plans (PUB 688)	Site Design and Roadway Standards	Transit Revitalization Investment Districts (TRID)
Capital Improvement Programing (CIP)	Loan and Funding Reimbursement Programs	Traffic Operations	Transportation Impact Fees
Developer Negotiation*	Official Map*	Transportation Partnerships*	

* In development

10

TRANSPORTATION AND LAND USE PLANNING ASSISTANCE

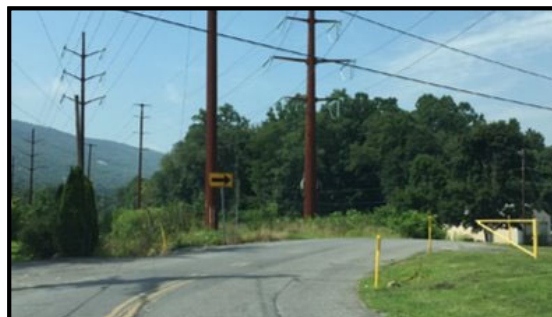
- Phone/Email questions answered by planning experts
- Onsite half-day session with planning experts



11

ASSISTANCE EXAMPLES

- East Berlin Borough, Adams Co., Road Safety Audit
- Sewickley Twp, Westmoreland Co., Main Street Revitalization Plan
- Mount Joy, Lancaster Co., Sidewalk Ordinances
- Pennell Borough, Bucks Co., Local Road Safety Plan
- Abington Twp, Montgomery Co., GIS



12

POTENTIAL ASSISTANCE TOPICS

- Multimodal Transportation
- Mobility
- Safety
- Funding
- Natural Resources
- Growth and Redevelopment
- Stormwater Management



13

OPERATIONAL EXAMPLES

- Paving Program
- Materials Ordering
- Sharing Resources with Other Municipalities
- Equipment Procurement



14

TRAINING COURSES

- Powered by Communities
- Active Transportation
- Local Road Safety Plan



15

TRAINING SUBMODULES

- Access Management/HOP
- Adaptive Reuse of Land
- Capital Improvement
- Developer Negotiations
- Funding and Reimbursement
- Impact Fees
- Multi-municipal Planning
- Official Map
- Parking Considerations
- Site Design and Roadway
- Tax Increment Financing
- Traditional Neighborhood
- Traffic Operations
- Transportation and Land Use
- Transportation Partnerships
- Transit Revitalization Investment District (TRID)
- Urban Growth/Rural Preservation
- Zoning for Mixed Use
- Zoning Overlays

16

NEWSLETTER/TECH SHEET

- Newsletters – monthly
- Tech Sheets – quarterly

Topics for 2021-22

- Traffic Calming
- LRTP/Freight Plan
- Active Transportation Plan
- One Map GIS Resources
- TIP



Sign up!
Link on PennDOT Website



17

MEETING AND SPEAKING

PennDOT Connects representatives are available for meetings or speaking engagements.



18

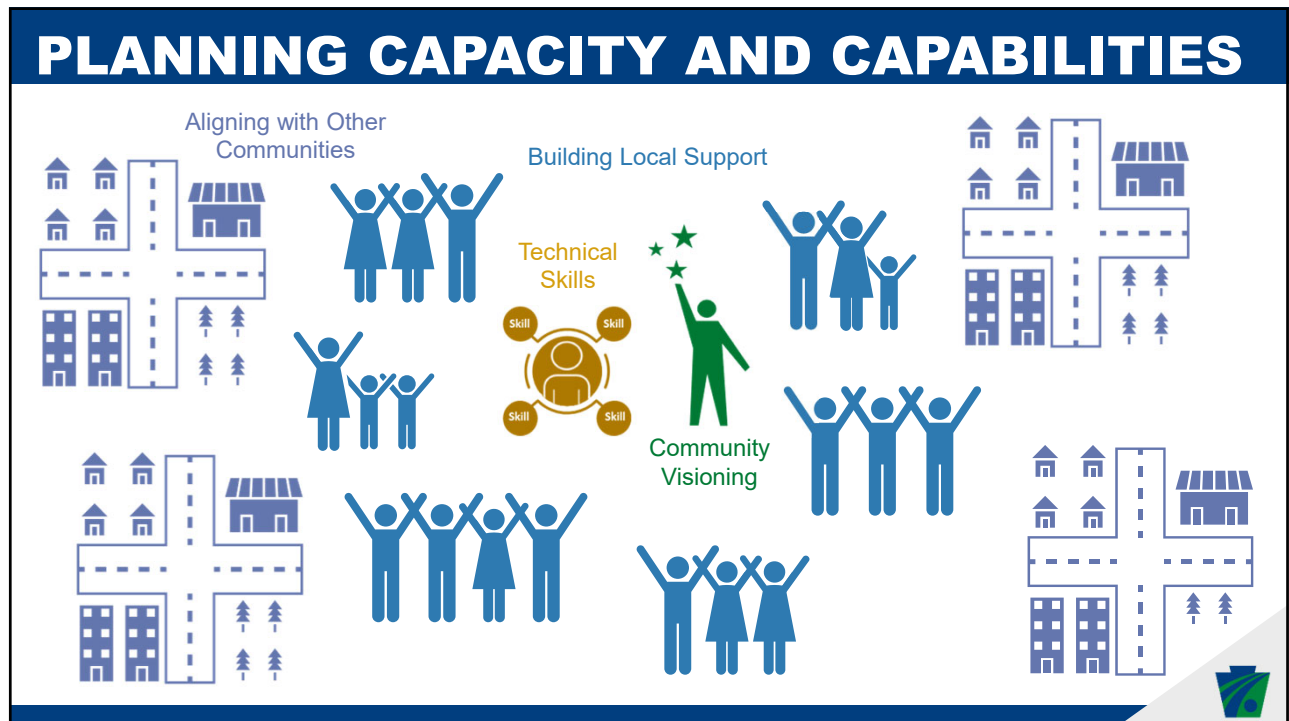
19

20

MUNICIPALITIES' PLANNING CAPACITY AND CAPABILITIES



21



22

CAPABILITIES



Looking at the impacts of population trends



Influencing decision making and innovation



Developing a community vision for the future



Collaborating with stakeholders



Managing growth, environmental resources, and economic development



Understanding emerging issues and trends

23

TRAINING AND ASSISTANCE NEEDS

What are your needs and priorities?



Municipal Resources

- [Transportation and Land Use Planning — Training and Assistance](#)
- [Online Training](#)
- [Tech Sheets](#)
- [Newsletters](#)

Request Municipal Assistance or Training

Municipalities may request assistance or training on transportation and land use planning topics.





24

ALIGNING WITH PENNDOT AND THE TIP

Overview of Paving Schedules and the TIP



25

COMMUNITY FOCUS: FUNDING

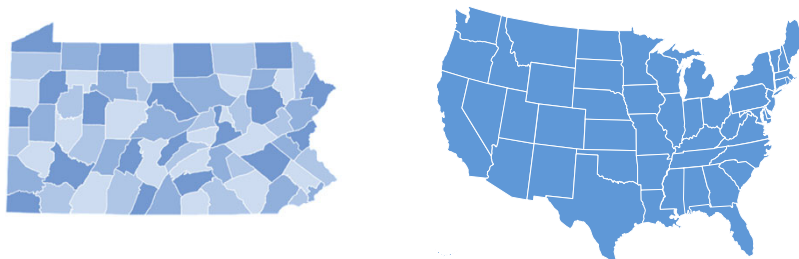


26

IDENTIFYING AND EVALUATING FUNDING AND GRANTS

Funding for Local Government Projects

- PennDOT Statewide Planning and Research Funds
- Existing programs available through Municipal Services and other sources (e.g., Community Development Block Grant)
- Federal and Bipartisan Infrastructure Law (BIL) Programs (IIJA)



27

PENNDOT STATEWIDE PLANNING AND RESEARCH FUND

The Department dedicates \$2-3 million a year to transportation planning studies:

- Multimodal transit
- Safety improvements
- Bike/pedestrian connections
- Walkability
- Impacts related to new infrastructure or land use and development



28

PENNDOT STATEWIDE PLANNING AND RESEARCH FUND

Recent Studies

- Development of a bike and pedestrian improvement plan for the City of Erie
- Evaluation of a proposed lane reduction on 10th Avenue in Altoona and construction of a shared-use path
- Analysis of impacts on the region's transportation network related to Geisinger Medical Center's operations and growth

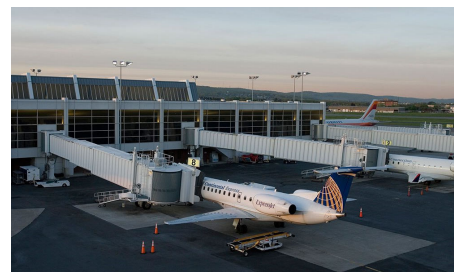


29

PENNDOT STATEWIDE PLANNING AND RESEARCH FUND

Recent Studies

- Assessment of transportation improvements for nonmotorized transportation in Greenville Borough
- Development of a regional sidewalk inventory and an online engagement platform to assist community walkability planning efforts
- Study to align land use with freight movement and potential improvements for the area surrounding the Lehigh Valley International Airport



30

MUNICIPAL SERVICES

Help municipalities and counties navigate Liquid Fuels Funding and many other programs, including:

- Other State Allocations (some controlled at county level)
- Federal Allocations
- Grants and Reimbursements
- Loans
- Infrastructure Bank



31

BIPARTISAN INFRASTRUCTURE LAW (BIL) PROGRAMS (IIJA)

- National Electric Vehicle Formula Program
- Safe Streets and Roads for All program
- PROTECT Grants (discretionary)
- Charging and Fueling Infrastructure Program
- Congestion Relief Program
- Bridge Investment Program (discretionary)
- Reconnecting Communities Pilot Program
- Rural Surface Transportation Grants
- INFRA
- National Infrastructure Project Assistance Program
- Local and Regional Project Assistance



32

ENLISTING ASSISTANCE

If your municipality identifies a potential need for PennDOT statewide funding or the federal BIL programs, contact your MPO/RPO administrative staff.

- Discuss the need/issue.
- Request consideration for planning and research funding support.



MPOs/RPOs are responsible for coordinating and submitting proposals to PennDOT's Center for Program Development and Management.

33

EXPECTATIONS

- Set-asides/required percentage allocations
- Guidelines and regulations
- Benefit Cost Analysis
- Required timeline for obligation of funds
- Timeframe to prepare applications
- Staff capacity to prepare applications
- Competition!*



34

CONCLUSION



35

PROGRAM SUMMARY AND OPEN FORUM



36



PennDOT Connects Municipal Resources

2022 MUNICIPAL OUTREACH/ PEER EXCHANGE

