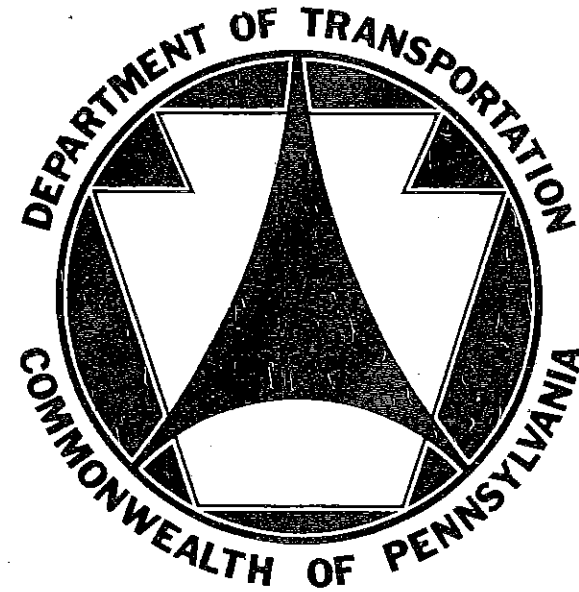


TC-7700 SERIES

TC-7714

# COMMONWEALTH OF PENNSYLVANIA DEPARTMENT OF TRANSPORTATION

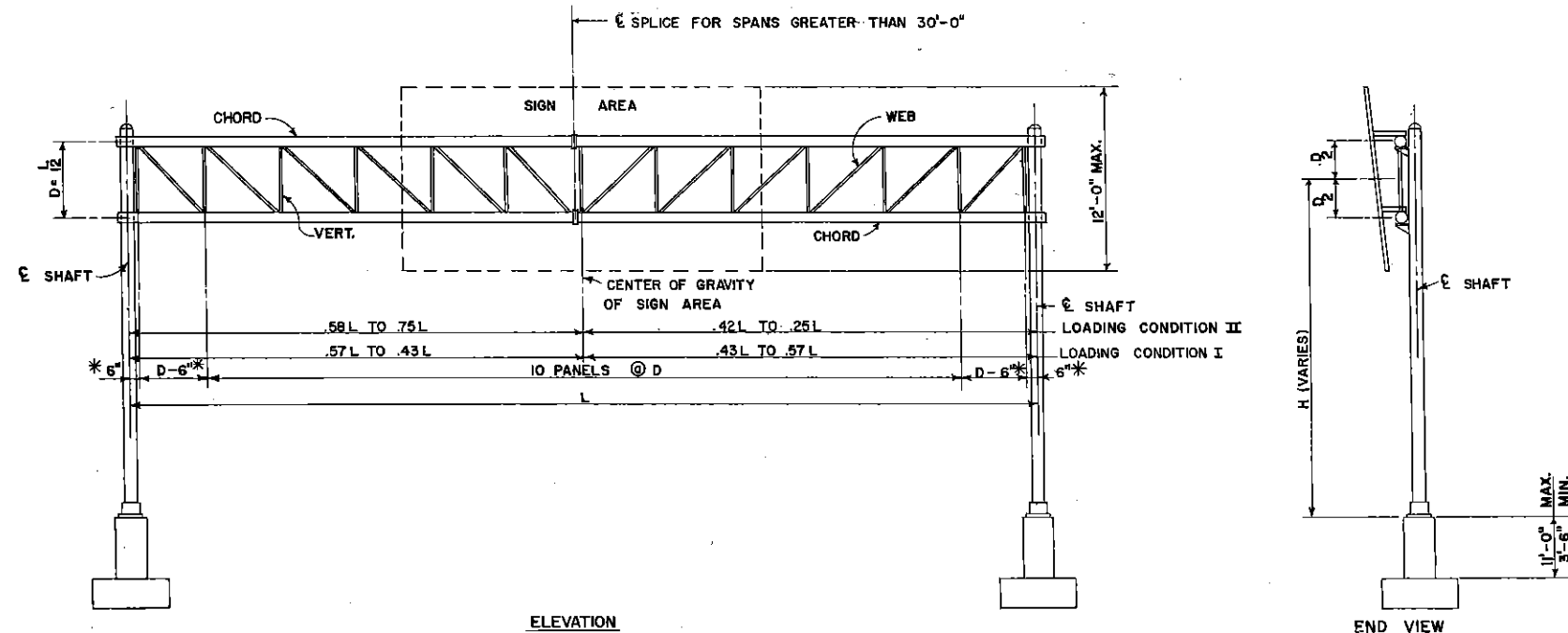


## TRAFFIC STANDARDS SIGNING

~~REVISION~~  
3-30-71

*Full set*

DISTRICT	COUNTY	ROUTE	SECTION	SHEET



**NOTES**

BAR# "P" AS TABULATED ARE THE TOTAL NUMBER OF VERTICAL BARS IN THE PEDESTAL.  
 FOR DETAILS OF TRUSS SEE SHEETS 5 AND 6.  
 FOR DETAILS OF FOOTING AND PEDESTAL SEE SHEET 4.  
 ALL MAIN MATERIAL UNLESS OTHERWISE SPECIFIED SHALL BE STRUCTURAL PIPE ASTM A53-52T GRADE B.  
 ALL TRUSSES SHALL BE CAMBERED 1" AT CENTER OF SPAN.  
 DESIGN TABLES AS SHOWN ARE BASED ON A WIND PRESSURE OF 25 LBS. PER SQ. FT. FOR OTHER WIND PRESSURES DETERMINE AN EQUIVALENT SIGN AREA AS FOLLOWS:  
 EQUIVALENT SIGN AREA =  $\frac{\text{ACTUAL SIGN AREA} \times \text{WIND LOAD}}{25}$   
 DESIGN TABLES MAY THEN BE USED DIRECTLY BY SUBSTITUTING "EQUIVALENT SIGN AREA" FOR COLUMN LABELED "SIGN AREA".  
 FOR DETAILS OF LIGHT SUPPORTS AND HAND HOLE SEE SHEET 9.

**LOADING CONDITION I**

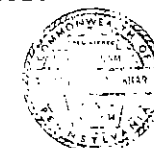
L	SIGN AREA	TRUSS			COLUMN				PEDESTAL "P" BARS				FOOTING TYPE			
		CHORD	WEB	VERT.	H TO 12'	H OVER 12' TO 18'	H OVER 18' TO 24'	H OVER 24' TO 30'	H TO 12'	H OVER 12' TO 18'	H OVER 18' TO 24'	H OVER 24' TO 30'	H TO 12'	H OVER 12' TO 18'	H OVER 18' TO 24'	H OVER 24' TO 30'
TO 30'	150	6" x .280	1" x .133	1" x .133	8" x .277	10" x .279	14" x .250	14" x .250	16 #6	16 #6	16 #6	16 #7	409	410	511	512
	200	6" x .280	1" x .133	1" x .133	10" x .279	14" x .250	14" x .250	16" x .250	16 #6	16 #6	16 #7	16 #7	409	411	511	512
	250															
	300	8" x .277	1" x .133	1" x .133	10" x .307	16" x .250	18" x .250	20" x .250	16 #6	16 #7	16 #7	16 #8	411	512	513	515
	350															
OVER 30' TO 40'	150	8" x .277	1" x .133	1" x .133	8" x .322	10" x .307	14" x .250	16" x .250	16 #6	16 #6	16 #7	16 #7	410	410	511	512
	200	8" x .277	1" x .133	1" x .133	10" x .279	14" x .250	16" x .250	18" x .250	16 #6	16 #6	16 #7	16 #7	409	412	511	513
	250	8" x .277	1" x .133	1" x .133	10" x .279	14" x .250	16" x .250	18" x .250	16 #6	16 #7	16 #7	16 #8	410	511	512	514
	300	8" x .277	1" x .133	1" x .133	14" x .250	16" x .250	18" x .250	20" x .250	16 #7	16 #7	16 #7	16 #8	511	512	613	614
	350	8" x .322	1" x .133	1" x .133	14" x .250	16" x .250	18" x .250	20" x .250	16 #7	16 #7	16 #8	16 #9	512	513	614	615
	400	8" x .322	1" x .133	1" x .133	14" x .250	18" x .250	20" x .250	20" x .313	16 #8	16 #7	16 #8	16 #9	512	613	614	615
OVER 40' TO 50'	150	8" x .277	1" x .133	1" x .133	10" x .279	10" x .307	14" x .250	16" x .250	16 #6	16 #6	16 #7	16 #7	409	410	511	512
	200	8" x .322	1" x .133	1" x .133	10" x .279	14" x .250	16" x .250	18" x .250	16 #6	16 #7	16 #7	16 #7	410	412	512	513
	250	10" x .279	1" x .133	1" x .133	10" x .307	14" x .250	16" x .250	18" x .250	16 #6	16 #7	16 #7	16 #8	411	511	512	515
	300	10" x .279	1" x .133	1" x .133	14" x .250	16" x .250	18" x .250	20" x .250	16 #7	16 #7	16 #7	16 #8	511	512	613	614
	350	10" x .279	1" x .133	1" x .133	14" x .250	16" x .250	18" x .250	20" x .313	16 #7	16 #7	16 #8	16 #8	511	512	613	614
	400	10" x .279	1" x .133	1" x .140	14" x .250	18" x .250	20" x .250	20" x .313	16 #8	16 #8	16 #8	16 #9	512	613	614	615

PEDESTAL	
COLUMN	PEDESTAL SIZE
6"	1'-6" x 1'-6"
8"	1'-10" x 1'-10"
10"	2'-2" x 2'-2"
14"	2'-2" x 2'-2"
16"	2'-6" x 2'-6"
18"	2'-6" x 2'-6"
20"	3'-0" x 3'-0"

**LOADING CONDITION II**

L	SIGN AREA	TRUSS			COLUMN				PEDESTAL "P" BARS				FOOTING TYPE			
		CHORD	WEB	VERT.	H TO 12'	H OVER 12' TO 18'	H OVER 18' TO 24'	H OVER 24' TO 30'	H TO 12'	H OVER 12' TO 18'	H OVER 18' TO 24'	H OVER 24' TO 30'	H TO 12'	H OVER 12' TO 18'	H OVER 18' TO 24'	H OVER 24' TO 30'
TO 30'	150															
	200	6" x .280	1" x .133	1" x .133	10" x .279	14" x .250	16" x .250	18" x .250	16 #6	16 #7	16 #7	16 #7	410	412	414	513
	250															
OVER 30' TO 40'	150															
	200															
	250															
	300															
OVER 40' TO 50'	150															
	200	8" x .322	1" x .133	1" x .133	10" x .307	16" x .250	18" x .250	20" x .250	16 #7	16 #7	16 #7	16 #8	412	413	514	515
	250															
	300															

PREPARED BY  
**BROOKHART & TYO**  
 CONSULTING ENGINEERS  
 HARRISBURG, PENNA.



*Michael Brookhart*  
 Chief Traffic Engineer

1-18-73
REVISIONS

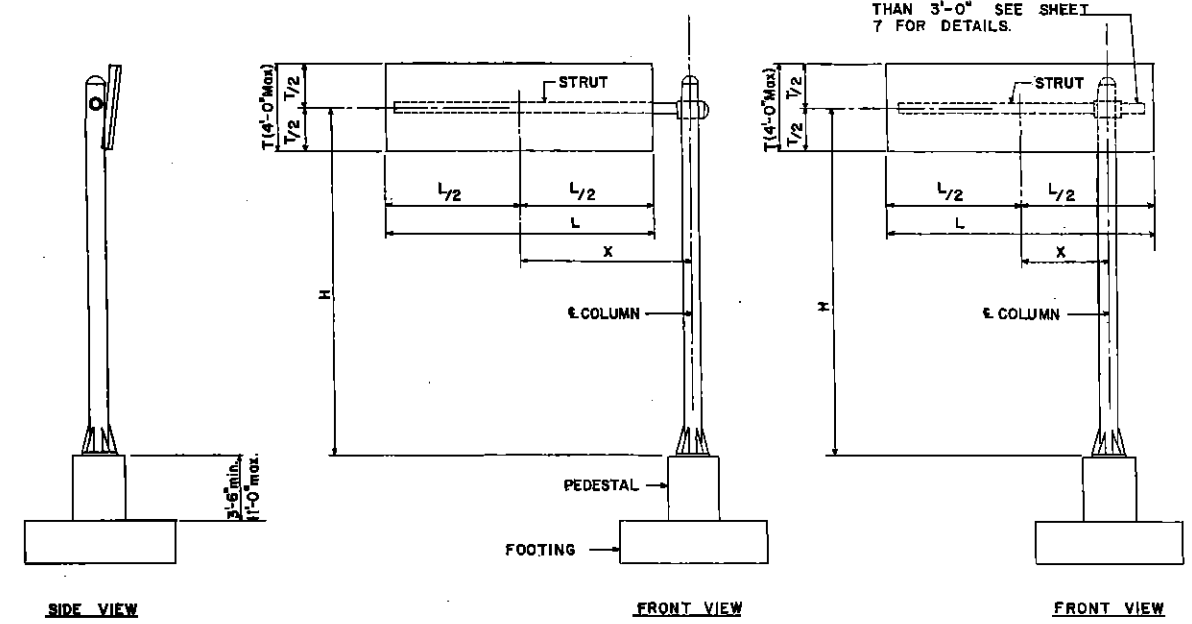
COMMONWEALTH OF PENNSYLVANIA  
 DEPARTMENT OF TRANSPORTATION  
 BUREAU OF TRAFFIC ENGINEERING

**OVERHEAD SIGN STRUCTURES**  
 SPANS TO 50'  
 LOADING CONDITION I & II

APPROVED: *[Signature]* DATE: *[Date]*  
 APPROVED: *[Signature]* DATE: *[Date]*

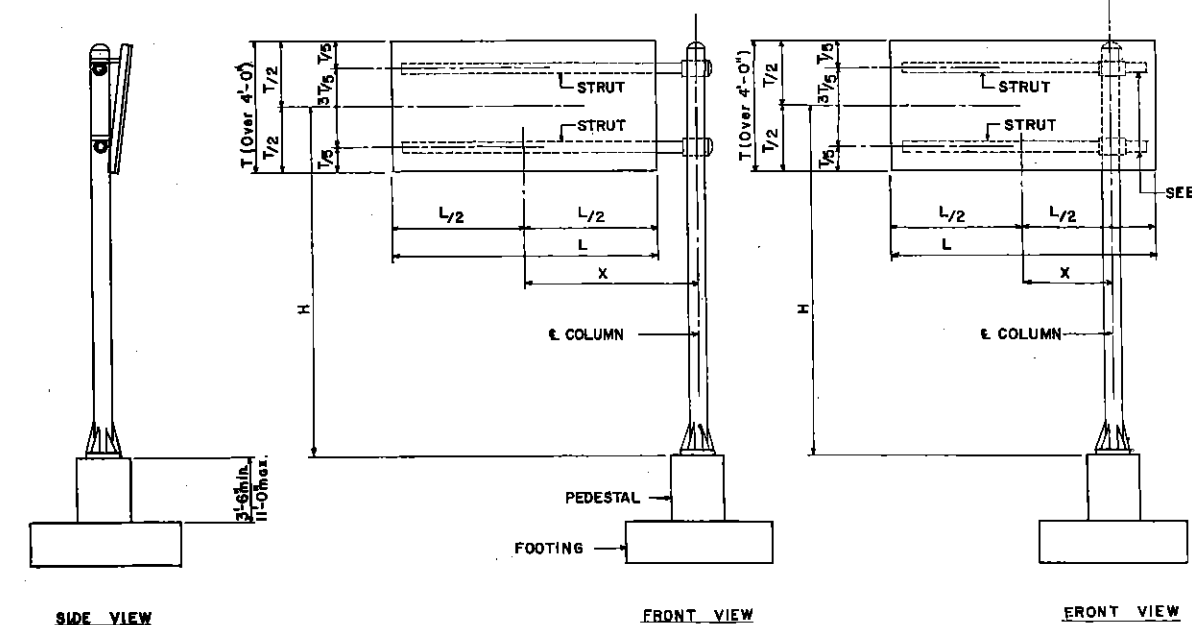
SHEET **1 of 9** TRAFFIC STANDARD No. **7714**

DISTRICT	COUNTY	ROUTE	SHEET



SINGLE STRUT SIGN

**NOTE A**  
STRUT ON THIS SIDE WHEN SIGN OVERHANG IS GREATER THAN 3'-0" SEE SHEET 7 FOR DETAILS.



DOUBLE STRUT SIGN

X	H	A	COLUMN	PEDESTAL "P" BARS	FOOTING TYPE
4'-0"	12'-0"	50	8"x 0.28	16 #5	604
		100	10"x 0.28		
		150	14"x 0.25		
		200	16"x 0.25		
		250	18"x 0.25		
4'-0"	16'-0"	50	8"x 0.32		
		100	14"x 0.25	16 #6	608
		150	16"x 0.25		
		200	18"x 0.25		
		250	20"x 0.25		
4'-0"	20'-0"	50	10"x 0.28	16 #6	507
		100	14"x 0.25	16 #6	609
		150	16"x 0.25	16 #7	710
		200	20"x 0.25		
		250	20"x 0.25		
4'-0"	24'-0"	50	10"x 0.28		
		100	16"x 0.25	16 #7	609
		150	18"x 0.25	16 #7	710
		200	20"x 0.25		
		250	20"x 0.31		
4'-0"	28'-0"	50	10"x 0.31		
		100	16"x 0.25		
		150	18"x 0.25		
		200	20"x 0.31		
		250	20"x 0.38		
8'-0"	12'-0"	50	8"x 0.28		
		100	10"x 0.28		
		150	14"x 0.25		
		200	16"x 0.25		
		250	16"x 0.25		
8'-0"	16'-0"	50	8"x 0.28		
		100	10"x 0.31		
		150	14"x 0.25		
		200	16"x 0.25		
		250	16"x 0.25		
8'-0"	20'-0"	50	8"x 0.32	16 #5	606
		100	14"x 0.25		
		150	16"x 0.25		
		200	18"x 0.25		
		250	20"x 0.25		
8'-0"	24'-0"	50	10"x 0.28		
		100	14"x 0.25		
		150	18"x 0.25		
		200	20"x 0.25		
		250	20"x 0.31		
8'-0"	28'-0"	50	10"x 0.28		
		100	16"x 0.25		
		150	18"x 0.25		
		200	20"x 0.31		
		250	20"x 0.38		

SIGN AREA	4'-0"	8'-0"	12'-0"	16'-0"	20'-0"
50	4"x 0.24	5"x 0.26	6"x 0.28	8"x 0.28	8"x 0.28
100	5"x 0.26	8"x 0.28	8"x 0.32	10"x 0.28	10"x 0.31

SIGN AREA	4'-0"	8'-0"	12'-0"	16'-0"	20'-0"
50	3"x 0.22	4"x 0.24	5"x 0.26	5"x 0.26	6"x 0.28
100	3 1/2"x 0.23	6"x 0.26	6"x 0.26	8"x 0.28	8"x 0.28
150	5"x 0.26	6"x 0.28	8"x 0.28	8"x 0.28	10"x 0.28
200	5"x 0.26	8"x 0.28	8"x 0.28	10"x 0.28	10"x 0.28
250	6"x 0.28	8"x 0.28	10"x 0.28	10"x 0.28	10"x 0.37
300				10"x 0.37	

X	H	A	COLUMN	PEDESTAL "P" BARS	FOOTING TYPE
12'-0"	12'-0"	50	8"x 0.28		
		100	10"x 0.28		
		150	14"x 0.25		
		200	16"x 0.25		
		250	18"x 0.25		
12'-0"	16'-0"	50	8"x 0.32		
		100	14"x 0.25	16 #6	608
		150	16"x 0.25		
		200	18"x 0.25		
		250	20"x 0.25		
12'-0"	20'-0"	50	10"x 0.28	16 #6	507
		100	14"x 0.25	16 #6	609
		150	16"x 0.25	16 #7	710
		200	20"x 0.25		
		250	20"x 0.25		
12'-0"	24'-0"	50	10"x 0.28		
		100	16"x 0.25	16 #7	609
		150	18"x 0.25	16 #7	710
		200	20"x 0.25		
		250	20"x 0.31		
12'-0"	28'-0"	50	10"x 0.31		
		100	16"x 0.25		
		150	18"x 0.25		
		200	20"x 0.31		
		250	20"x 0.38		
16'-0"	12'-0"	50	8"x 0.32		
		100	14"x 0.25		
		150	16"x 0.25		
		200	16"x 0.25		
		250	20"x 0.25		
16'-0"	16'-0"	50	10"x 0.28		
		100	14"x 0.25		
		150	16"x 0.25		
		200	16"x 0.25		
		250	20"x 0.25		
16'-0"	20'-0"	50	10"x 0.28	16 #6	806
		100	14"x 0.25	16 #6	708
		150	18"x 0.25		
		200	20"x 0.25		
		250	20"x 0.31		
16'-0"	24'-0"	50	10"x 0.28		
		100	16"x 0.25	16 #7	709
		150	18"x 0.25	16 #7	711
		200	20"x 0.31	16 #8	811
		250	20"x 0.38	16 #8	912
16'-0"	28'-0"	50	10"x 0.31		
		100	16"x 0.25		
		150	20"x 0.25		
		200	20"x 0.31		
		250	20"x 0.38		
16'-0"	24'-0"	300	20"x 0.44	16 #9	913

COLUMN	PEDESTAL SIZE
6"	1'-6" x 1'-6"
8"	1'-10" x 1'-10"
10"	2'-2" x 2'-2"
14"	2'-2" x 2'-2"
16"	2'-6" x 2'-6"
20"	2'-6" x 2'-6"

X	H	A	COLUMN	PEDESTAL "P" BARS	FOOTING TYPE
20'-0"	12'-0"	50	10"x 0.28		
		100	14"x 0.25		
		150	16"x 0.25		
		200	18"x 0.25		
		250	20"x 0.31		
20'-0"	16'-0"	50	10"x 0.28		
		100	14"x 0.25	16 #8	808
		150	16"x 0.25	16 #7	809
		200	20"x 0.25		
		250	20"x 0.31		
20'-0"	20'-0"	50	10"x 0.28	16 #6	807
		100	16"x 0.25	16 #7	808
		150	18"x 0.25	16 #7	809
		200	20"x 0.25		
		250	20"x 0.31	16 #8	1010
20'-0"	24'-0"	50	10"x 0.28		
		100	16"x 0.25	16 #7	809
		150	20"x 0.25	16 #8	810
		200	20"x 0.31	16 #8	911
		250	20"x 0.38	16 #8	1011
20'-0"	28'-0"	50	14"x 0.28		
		100	18"x 0.25		
		150	20"x 0.25	16 #8	810
		200	20"x 0.31	16 #8	911
		250	20"x 0.44	16 #9	913

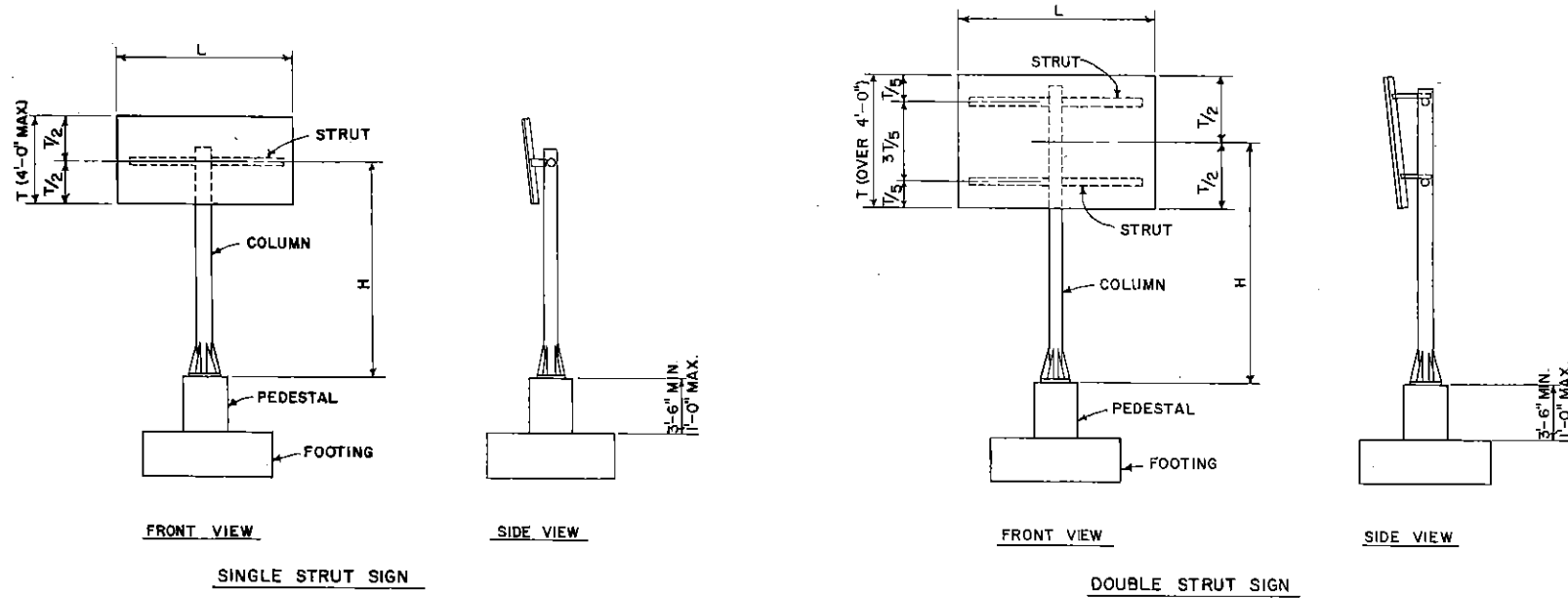
**NOTES**  
ALL MAIN MATERIAL, UNLESS OTHERWISE SPECIFIED, SHALL BE STRUCTURAL PIPE ASTM-A53-52T GRADE B. FOR STEEL DETAILS SEE SHEET 5 AND 7. FOR DETAILS OF FOOTING AND PEDESTAL SEE SHEET 4. BARS "P" AS TABULATED ARE THE TOTAL NUMBER OF VERTICAL BARS IN THE PEDESTAL. SEE SHEET 4 FOR GENERAL NOTES. DESIGN TABLES AS SHOWN ARE BASED ON A WIND PRESSURE OF 25 LBS. PER SQ. FT. FOR OTHER WIND PRESSURE DETERMINE AN EQUIVALENT SIGN AREA AS FOLLOWS:  
EQUIVALENT SIGN AREA = ACTUAL SIGN AREA / WIND PRESSURE / 25  
DESIGN TABLES MAY THEN BE USED DIRECTLY BY SUBSTITUTING "EQUIVALENT" SIGN AREA FOR COLUMN Labeled "SIGN AREA". FOR DETAILS OF LIGHT SUPPORTS AND HAND HOLE SEE SHEET 9.

COMMONWEALTH OF PENNSYLVANIA  
DEPARTMENT OF TRANSPORTATION  
BUREAU OF TRAFFIC ENGINEERING

**OVERHEAD SIGN STRUCTURES  
CANTILEVERS**

APPROVE: [Signature]  
APPROVE: [Signature]  
SHEET 2 of 9  
TRAFFIC STANDARD No. 771

DISTRICT	COUNTY	ROUTE	SECTION	SHEET



**NOTES**  
 ALL MAIN MATERIAL, UNLESS OTHERWISE SPECIFIED, SHALL BE STRUCTURAL PIPE ASTM A53-52T GRADE B.  
 FOR STEEL DETAILS SEE SHEET 5 AND 7.  
 FOR DETAILS OF FOOTING AND PEDESTAL SEE SHEET 4.  
 BARS "P" AS TABULATED ARE THE TOTAL NUMBER OF VERTICAL BARS IN THE PEDESTAL.  
 SEE SHEET 4 FOR GENERAL NOTES  
 DESIGN TABLES AS SHOWN ARE BASED ON A WIND PRESSURE OF 25 LBS. PER SQ. FT. FOR OTHER WIND PRESSURES DETERMINE ON EQUIVALENT SIGN AREA AS FOLLOWS:  
 EQUIVALENT SIGN AREA =  $\frac{\text{ACTUAL SIGN AREA} \times \text{WIND LOAD}}{25}$   
 DESIGN TABLES MAY THEN BE USED DIRECTLY BY SUBSTITUTING "EQUIVALENT SIGN AREA" FOR COLUMN LABELED "SIGN AREA".  
 FOR DETAILS OF LIGHT SUPPORTS AND HAND HOLE SEE SHEET 9.

H	SIGN AREA	COLUMN	PEDESTAL "P" BARS	FOOTING TYPE
12'-0"	50	6"φ x .28		
	100	8"φ x .32		
	150	10"φ x .31		
	200	14"φ x .25		
	250	16"φ x .25		
16'-0"	50	8"φ x .28		
	100	10"φ x .28	16# 6	409
	150	14"φ x .25	16# 6	510
	200	16"φ x .25		
	250	18"φ x .25		
20'-0"	50	8"φ x .28	16# 6	408
	100	14"φ x .25	16# 6	411
	150	16"φ x .25	16# 7	511
	200	18"φ x .25	16# 7	513
	250	20"φ x .25		
24'-0"	50	10"φ x .28		
	100	14"φ x .25	16# 6	510
	150	16"φ x .25	16# 7	512
	200	18"φ x .25	16# 8	613
	250	20"φ x .25	16# 8	614
28'-0"	50	10"φ x .28		
	100	16"φ x .25		
	150	18"φ x .25		
	200	20"φ x .25		
	250	20"φ x .31		

WIND PRESSURE	SINGLE STRUTS			
	L			
	8'-0"	12'-0"	16'-0"	20'-0"
25 P.S.F.	3"φ x .216	3"φ x .216	3"φ x .216	3"φ x .226
40 P.S.F.	3"φ x .216	3"φ x .216	3"φ x .226	5"φ x .258

PEDESTAL	
COLUMN	PEDESTAL SIZE
6"φ	1'-6" x 1'-6"
8"φ	1'-10" x 1'-10"
10"φ	2'-2" x 2'-2"
14"φ	2'-2" x 2'-2"
16"φ	2'-6" x 2'-6"
18"φ	2'-6" x 2'-6"
20"φ	3'-0" x 3'-0"

SIGN AREA	DOUBLE STRUTS			
	L			
	8'-0"	12'-0"	16'-0"	20'-0"
50	3"φ x .216	3"φ x .216	-	-
100	3"φ x .216	3"φ x .216	3"φ x .216	3"φ x .216
150	3"φ x .216	3"φ x .216	3"φ x .226	3"φ x .226
200	3"φ x .216	3"φ x .226	3"φ x .226	4"φ x .237
250	3"φ x .216	3"φ x .226	4"φ x .237	5"φ x .258

COMMONWEALTH OF PENNSYLVANIA  
 DEPARTMENT OF HIGHWAYS  
 TRAFFIC ENGINEERING BUREAU

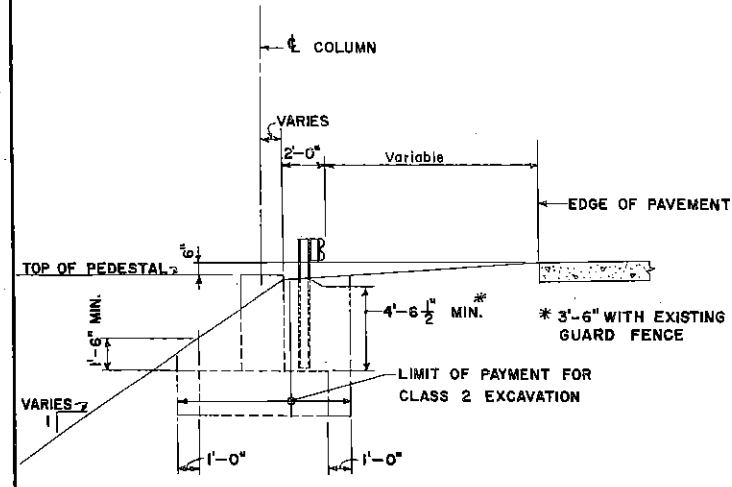
OVERHEAD SIGN STRUCTURES  
 CENTER MOUNTS

APPROVED: *[Signature]* DATE: *[Date]*  
 CHIEF TRAFFIC ENGINEER

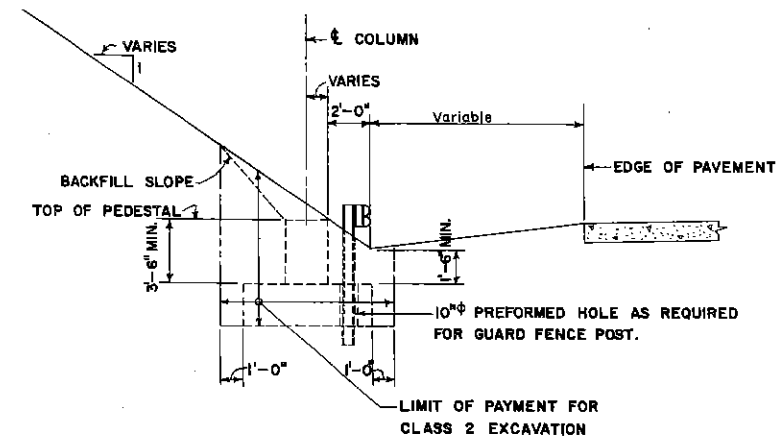
APPROVED: *[Signature]* DATE: *[Date]*  
 SUPERVISOR

SHEET 3 of 9 TRAFFIC STANDARD No. 7714

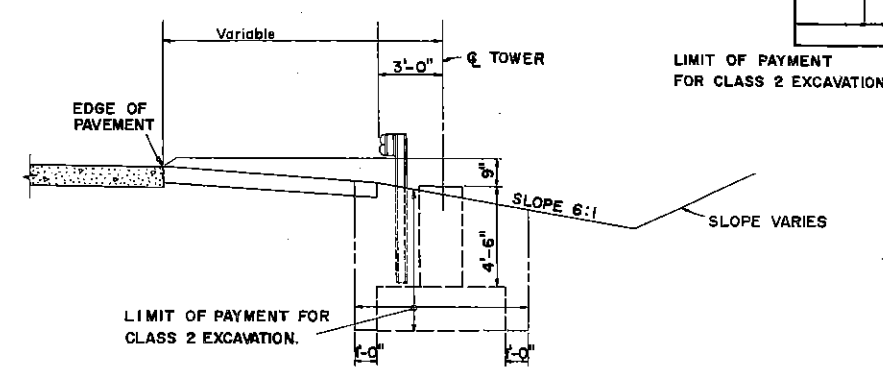
DISTRICT	COUNTY	ROUTE	SECTION	SHEET



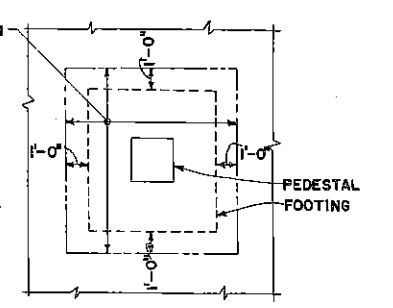
TYPICAL SHOULDER INSTALLATION IN FILL



TYPICAL SHOULDER INSTALLATION IN CUT



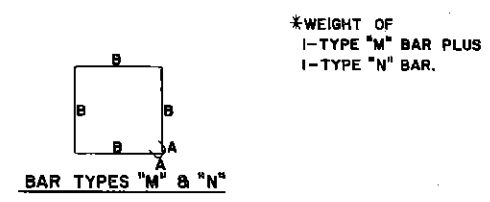
TYPICAL SHOULDER INSTALLATION IN CUT WITH SWALE



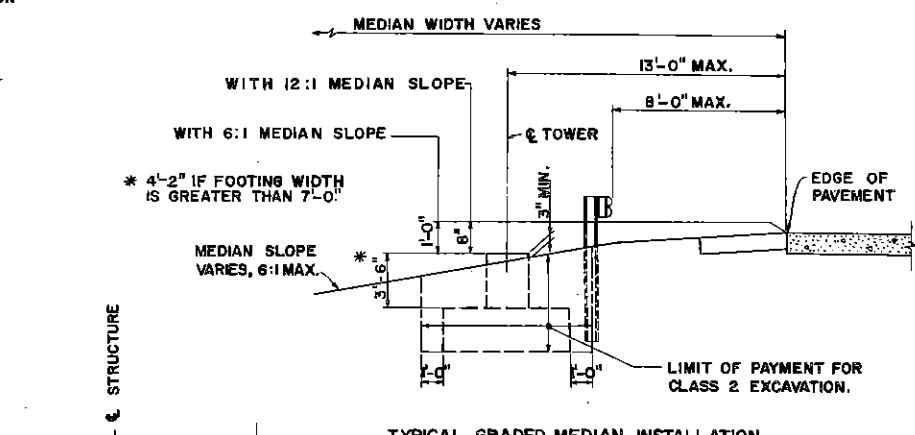
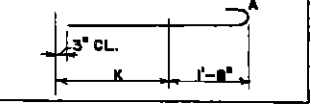
TYPICAL PLAN VIEW

FOOTING TYPE	DIMENSION		CU. YDS. CONC.	FOOTING REINFORCEMENT				WT. OF BARS
	F	G		"L" BARS	"T" BARS	WT. OF BARS		
408	8'-0"	4'-0"	2.37	4 #4	4 #4	7'-6"	8	78
409	9'-0"	4'-0"	2.67	4 #4	4 #4	8'-6"	9	88
410	10'-0"	4'-0"	2.97	4 #4	4 #4	9'-6"	10	110
411	11'-0"	4'-0"	3.26	5 #4	4 #4	10'-6"	11	129
412	12'-0"	4'-0"	3.56	6 #4	4 #4	11'-6"	12	156
413	13'-0"	4'-0"	3.85	6 #4	5 #4	12'-6"	13	178
414	14'-0"	4'-0"	4.15	6 #4	6 #4	13'-6"	14	227
507	7'-0"	5'-0"	2.59	5 #4	5 #4	6'-6"	7	86
510	10'-0"	5'-0"	3.70	5 #4	5 #4	9'-6"	10	124
511	11'-0"	5'-0"	4.07	6 #4	5 #4	10'-6"	11	157
512	12'-0"	5'-0"	4.44	7 #4	5 #4	11'-6"	12	187
513	13'-0"	5'-0"	4.81	8 #4	5 #4	12'-6"	13	235
514	14'-0"	5'-0"	5.19	8 #4	6 #4	13'-6"	14	295
515	15'-0"	5'-0"	5.56	8 #4	7 #4	14'-6"	15	332
606	6'-0"	6'-0"	2.67	6 #4	6 #4	5'-6"	6	88
514a	14'-0"	5'-0"	5.19	5 #4	9 #4	13'-6"	14	234
608	6'-0"	6'-0"	3.56	6 #4	6 #4	7'-6"	8	119
609	9'-0"	6'-0"	4.00	6 #4	6 #4	9'-6"	9	134
604	6'-0"	4'-0"	1.78	4 #4	4 #4	5'-6"	6	58
613	13'-0"	6'-0"	5.78	6 #4	6 #4	12'-6"	13	321
614	14'-0"	6'-0"	6.22	6 #4	6 #4	13'-6"	14	346
615	15'-0"	6'-0"	6.67	6 #4	7 #4	14'-6"	15	393
616	16'-0"	6'-0"	7.11	7 #4	6 #4	15'-6"	16	467
708	6'-0"	7'-0"	4.15	7 #4	7 #4	7'-6"	8	140
709	9'-0"	7'-0"	4.66	7 #4	7 #4	9'-6"	9	158
710	10'-0"	7'-0"	5.19	7 #4	7 #4	10'-6"	10	176
711	11'-0"	7'-0"	5.70	8 #4	7 #4	10'-6"	11	222
607	7'-0"	6'-0"	3.11	6 #4	6 #4	6'-6"	7	104
713	13'-0"	7'-0"	6.74	7 #4	9 #4	12'-6"	13	296
715	15'-0"	7'-0"	7.78	8 #4	8 #4	14'-6"	15	343
707	7'-0"	7'-0"	3.63	7 #4	7 #4	6'-6"	7	122
717	17'-0"	7'-0"	8.81	8 #4	9 #4	16'-6"	17	569
810	10'-0"	8'-0"	5.93	8 #4	8 #4	9'-6"	10	202
811	11'-0"	8'-0"	6.52	10 #4	10 #4	10'-6"	11	251
808	8'-0"	8'-0"	4.74	8 #4	8 #4	7'-6"	8	161
809	9'-0"	8'-0"	5.48	8 #4	9 #4	8'-6"	9	187
909	9'-0"	9'-0"	6.00	9 #4	9 #4	8'-6"	9	204
910	10'-0"	9'-0"	6.66	8 #4	9 #4	9'-6"	10	273
911	11'-0"	9'-0"	7.33	12 #4	12 #4	10'-6"	11	293
912	12'-0"	9'-0"	8.00	10 #4	10 #4	11'-6"	12	376
915	13'-0"	9'-0"	8.67	12 #4	12 #4	12'-6"	13	460
1011	11'-0"	10'-0"	8.15	10 #4	10 #4	10'-6"	11	371
1010	10'-0"	10'-0"	7.41	14 #4	14 #4	9'-6"	14	317
515	5'-0"	15'-0"	5.93	5 #4	7 #4	15'-6"	16	394
1312	12'-0"	13'-0"	11.56	15 #4	15 #4	11'-6"	15	456
1209	9'-0"	12'-0"	8.00	12 #4	12 #4	8'-6"	9	275

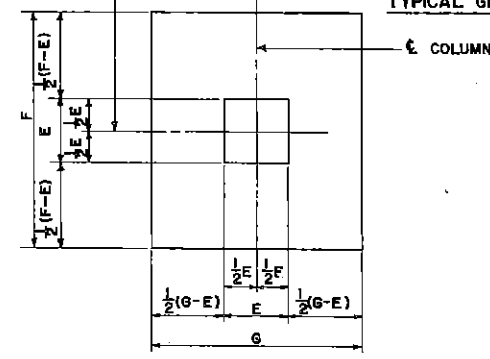
PEDESTAL E	CU. YDS. CONC.	PEDESTAL REINFORCEMENT				WEIGHT LBS.		
		#4 BARS TYPE "M"	#4 BARS TYPE "N"	WEIGHT LBS.				
1'-6"	0.08K	4'-10"	5"	1'-0"	3			
1'-10"	0.12K	6'-2"	5"	1'-4"	4			
2'-2"	0.17K	7'-6"	5"	1'-8"	5			
2'-6"	0.23K	8'-10"	5"	2'-0"	6			
3'-0"	0.33K	10'-10"	5"	2'-6"	7-11"	13*		
3'-6"	0.45K	12'-10"	5"	3'-0"	9'-4"	5"	2-12"	15*



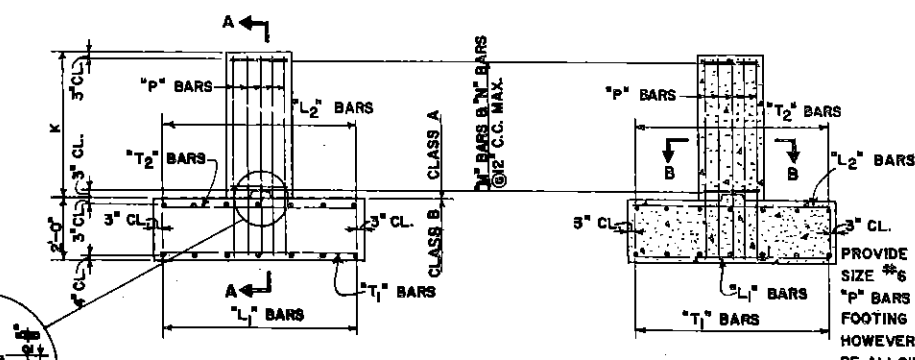
BAR SIZE	WEIGHT LBS./FT.	A	LENGTH
4	.663	0	K + 1'-9"
5	1.043	0	K + 1'-9"
6	1.502	8"	K + 2'-1"
7	2.044	10"	K + 2'-3"
8	2.670	1'-1"	K + 2'-6"
9	3.400	1'-3"	K + 2'-8"
10	4.303	1'-5"	K + 2'-10"
11	5.315	1'-7"	K + 3'-0"



TYPICAL GRADED MEDIAN INSTALLATION



PLAN OF FOUNDATION



ELEVATION

SECTION A-A

- GENERAL NOTES:**
- ALL MAIN MATERIAL SHALL BE STANDARD STEEL PIPE, ASTM A53-CURRENT, GRADE B. WEB MEMBERS FOR TRUSSES SHALL BE STANDARD BUTT WELD STEEL PIPE ASTM A53-CURRENT. ALL PLATES AND STRUCTURAL SHAPES SHALL BE STRUCTURAL STEEL ASTM-A36.
  - ANCHOR BOLTS SHALL BE STRUCTURAL STEEL ASTM-A441.
  - ALL WORKMANSHIP SHALL BE IN ACCORDANCE WITH P.D.H. SPECIFICATIONS, CURRENT FORMS 408 AND 409 AND A.W.S. STANDARD SPECIFICATIONS FOR WELDED HIGHWAY BRIDGES.
  - CONCRETE FOR FOOTINGS & PEDESTALS SHALL BE CLASS A.
  - STEEL REINFORCING BARS ARE DESIGNED FOR  $F_y = 18,000$  LBS. PER SQ. IN. AND DETAILED AS PER A.C.I. CODE. STRESSED BARS SHALL BE LAPPED 30 DIAMETERS AND UNSTRESSED BARS SHALL BE LAPPED 24 DIAMETERS EXCEPT AS NOTED. PROVIDE 3" COVER ON REINFORCEMENT BARS UNLESS OTHERWISE NOTED.
  - DESIGN SPECIFICATIONS ARE BASED ON U.S. BUREAU OF PUBLIC ROADS "STRUCTURAL REQUIREMENTS FOR HIGHWAY SIGNS"
  - MAXIMUM FOUNDATION BEARING PRESSURE EQUALS  $1\frac{1}{2}$  TONS PER SQ. FT.
  - THE FOOTINGS MAY BE ORDERED BY THE ENGINEER TO BE AT ANY ELEVATION OR OF ANY DIMENSIONS NECESSARY TO PROVIDE A PROPER FOUNDATION.
  - EXPOSED CONCRETE EDGES SHALL BE CHAMFERED  $1" \times 1"$  UNLESS SPECIFIED OR DIRECTED BY THE ENGINEER OTHERWISE.
  - ALL ANCHOR BOLTS FOR BEARINGS SHALL BE SET BY TEMPLATE IN FORMS BEFORE CONCRETE IS POURED. DRILLING OF HOLES FOR ANCHOR BOLTS IN PEDESTALS WILL NOT BE PERMITTED.
  - FOR WELDS, THE SHIELDED METAL ARC SHALL BE USED WITH ELECTRODES CONFORMING TO ASTM DESIGNATION E6016, E6018, E6028, E7016, E7018 OR E7028.
  - ALL MATERIAL INCLUDED IN ITEM "SIGN STRUCTURE STEEL" SHALL BE GALVANIZED IN ACCORDANCE WITH P.D.H. SPECIFICATIONS, CURRENT FORM 409.
  - DIAMETERS OF PIPE BETWEEN  $1\frac{1}{2}"$  AND  $12\frac{1}{2}"$  ARE NOMINAL. DIAMETERS OF PIPE GREATER THAN  $12\frac{1}{2}"$  ARE OUTSIDE DIAMETERS.

COMMONWEALTH OF PENNSYLVANIA  
DEPARTMENT OF TRANSPORTATION  
BUREAU OF TRAFFIC ENGINEERING

**OVERHEAD SIGN STRUCTURES  
SPANS TO 50'  
CANTILEVERS & CENTER MOUNTS  
FOUNDATION DETAILS**

APPROVED: *[Signature]* DATE: \_\_\_\_\_  
CHIEF TRAFFIC ENGINEER

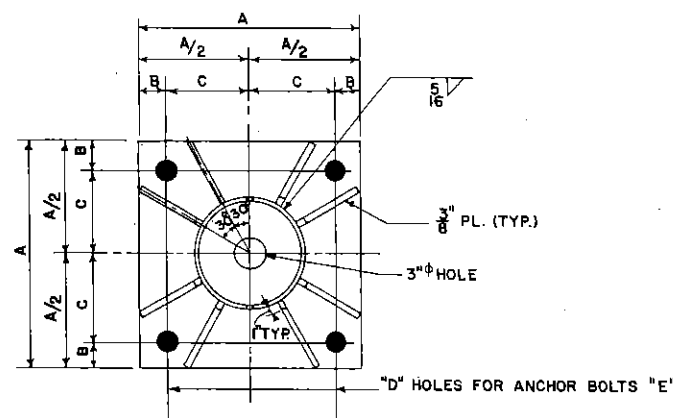
APPROVED: *[Signature]* DATE: \_\_\_\_\_  
CHIEF ENGINEER

SHEET 4 of 9 TRAFFIC STANDARD No. 7714

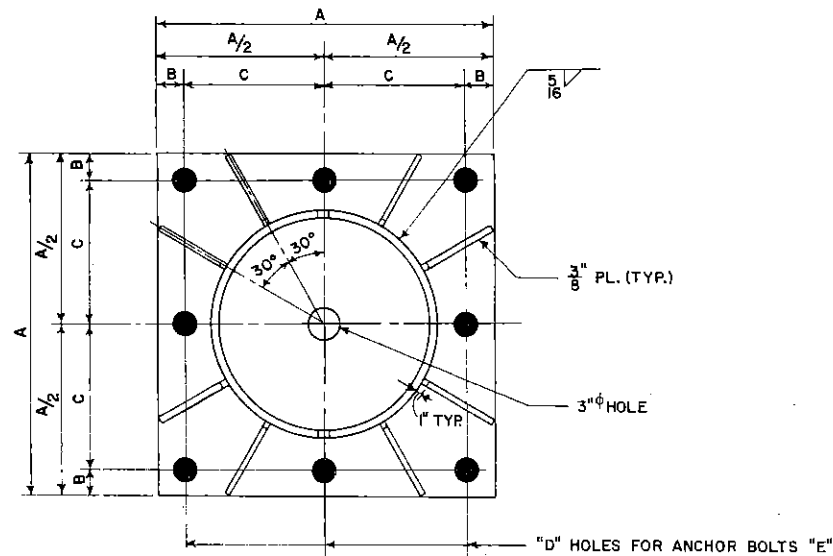
REVISIONS:

1-18-73
9-27-74
6-13-74
3-30-71

DISTRICT	COUNTY	ROUTE	SECTION	SHEET

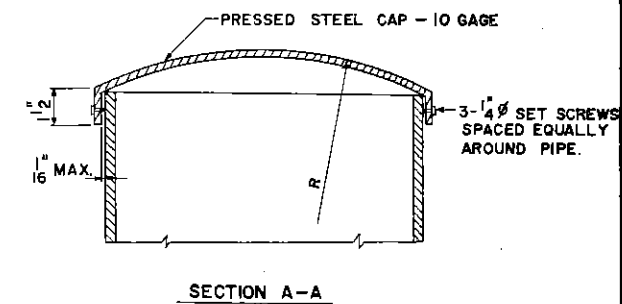


PLAN OF COLUMN BASE TYPE-Y

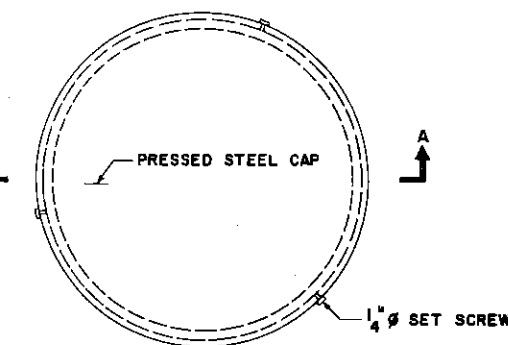


PLAN OF COLUMN BASE TYPE-X

PIPE CAPS		
PIPE SIZE	R	WEIGHT IN LBS.
3"φ	9"	0.8
3 1/2"φ	9"	1.0
4"φ	9"	1.2
5"φ	9"	1.7
6"φ	9"	2.5
8"φ	9"	3.8
10"φ	9"	5.7
14"φ	1'-6"	8.7
16"φ	1'-6"	11.1
18"φ	1'-6"	13.7
20"φ	2'-6"	15.0
24"φ	2'-6"	22.4



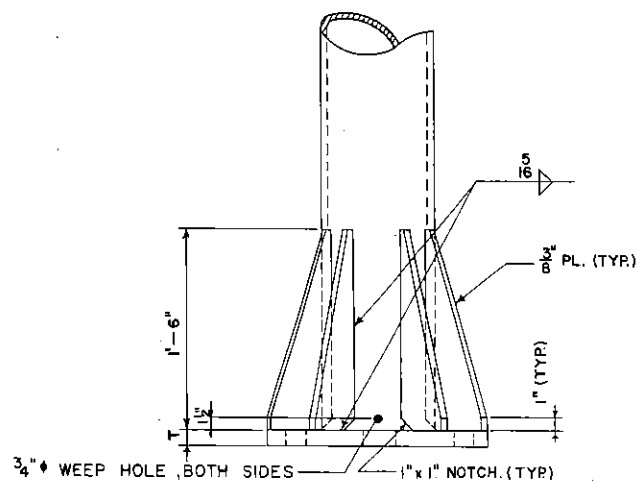
SECTION A-A



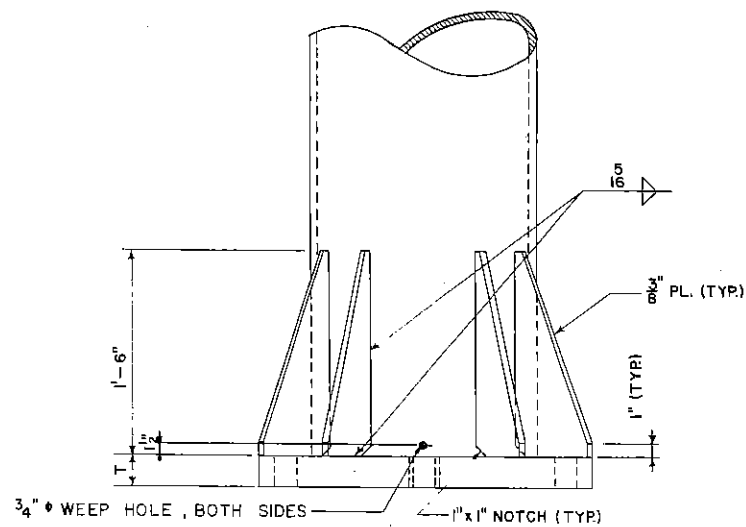
PIPE CAP DETAILS

NOTE:

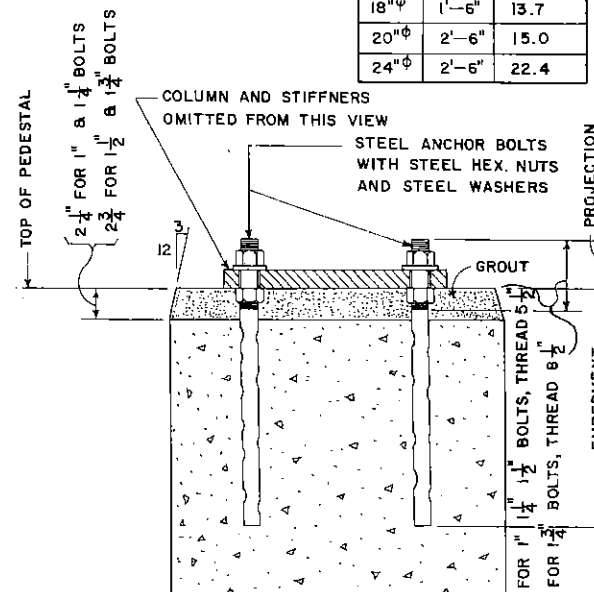
ALL MATERIAL FOR BASE DETAILS AND CAP PLATES SHALL BE STRUCTURAL STEEL A.S.T.M.-A36. ALL ANCHOR BOLTS SHALL BE STRUCTURAL STEEL A.S.T.M.-A441.



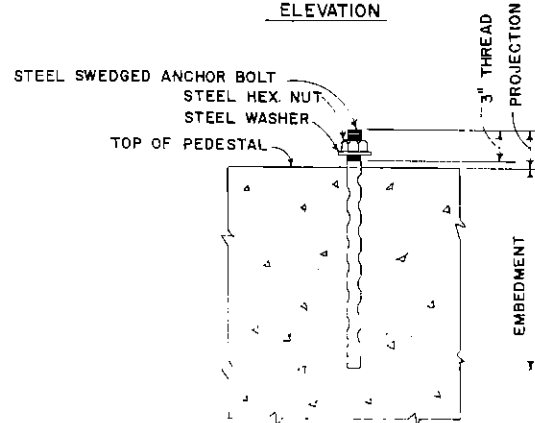
ELEVATION



ELEVATION



ANCHOR BOLT DETAIL FOR CANTILEVERS & CENTER MOUNTS



ANCHOR BOLT DETAIL FOR SPANS TO 50'-0"

COLUMN WTS.	
COLUMN SIZE	WT. PER FT
6"φ x .280	19.0
8"φ x .277	24.7
8"φ x .322	28.5
10"φ x .279	31.2
10"φ x .307	34.2
14"φ x .250	36.7
16"φ x .250	42.1
18"φ x .250	47.4
20"φ x .250	52.7
20"φ x .313	65.7
20"φ x .375	78.6
20"φ x .438	91.4
24"φ x .375	94.6

COLUMN BASES												
COLUMN SIZE	BASE TYPE	A	B	C	D	E	T	WASHER SIZE	PROJECTION	EMBEDMENT	WEIGHT IN LBS. BASE	WEIGHT IN LBS. ANCHOR BOLTS
6"φ x .280	Y	1'-0"	2"	4"	1 1/4"φ	1"φ	3/4"	2 1/2"φ x 3/8"	3"	1'-6"	70	21
8"φ x .277	Y	1'-4"	2 1/2"	5 1/2"	1 1/2"φ	1 1/4"φ	1"	3"φ x 3/8"	3 1/2"	2'-0"	121	43
10"φ x .279	Y	1'-8"	2 1/2"	7 1/2"	1 3/4"φ	1 1/2"φ	1 1/2"	3 1/2"φ x 3/8"	4 1/4"	3'-0"	226	88
14"φ x .250	Y	1'-8"	2 1/2"	7 1/2"	1 3/4"φ	1 1/2"φ	1 1/2"	3 1/2"φ x 3/8"	4 1/4"	3'-0"	213	88
16"φ x .250	Y	2'-0"	2 1/2"	9 1/2"	2"φ	1 3/4"φ	1 1/2"	4"φ x 3/8"	5"	3'-3"	336	131
18"φ x .250	Y	2'-0"	2 1/2"	9 1/2"	2"φ	1 3/4"φ	1 1/2"	4"φ x 3/8"	5"	3'-3"	328	131
20"φ x .250												
20"φ x .313	X	2'-6"	2 1/2"	1'-0 1/2"	2"φ	1 3/4"φ	2 1/2"	4"φ x 3/8"	6"	3'-6"	749	283
20"φ x .438												
24"φ x .375	X	3'-0"	3"	1'-3"	2"φ	1 3/4"φ	3"	4"φ x 3/8"	6 1/4"	3'-6"	1156	284

1 DOES NOT INCLUDE WEIGHT OF PIPE.

COMMONWEALTH OF PENNSYLVANIA  
DEPARTMENT OF HIGHWAYS  
TRAFFIC ENGINEERING BUREAU

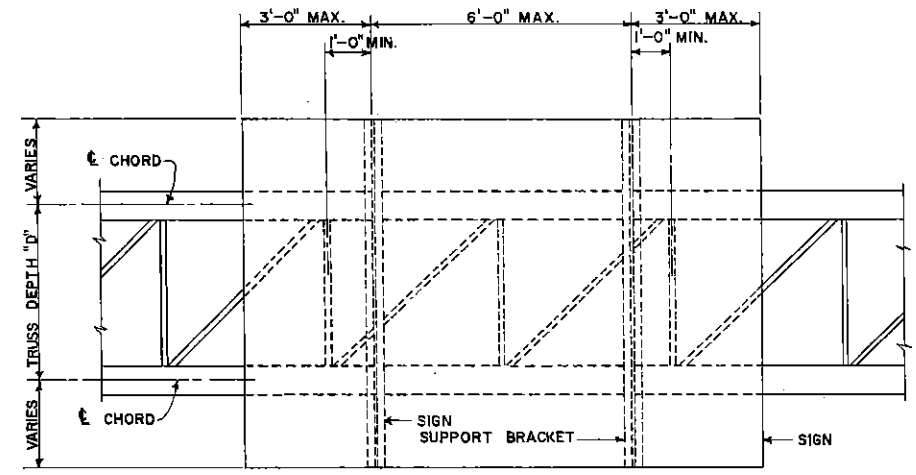
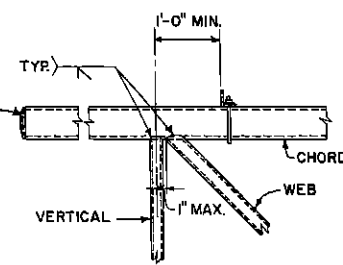
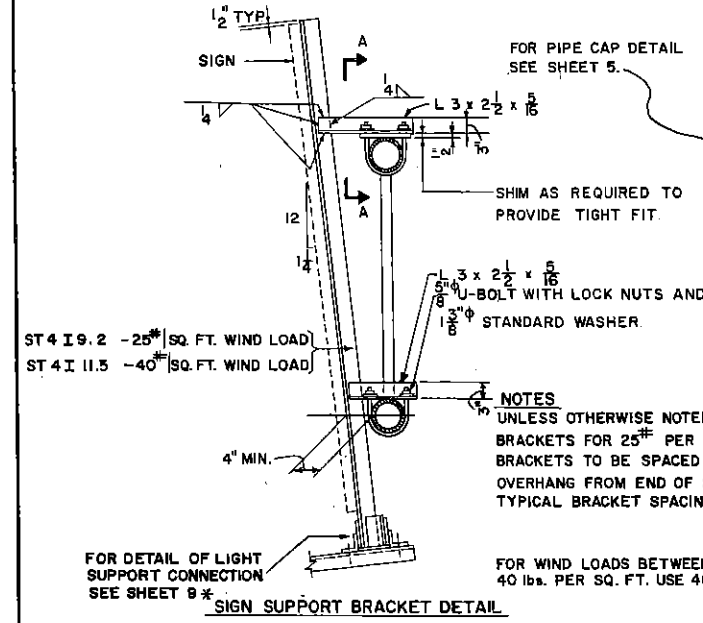
OVERHEAD SIGN STRUCTURES  
SPANS TO 50'  
CANTILEVERS & CENTER MOUNTS  
COLUMN BASES

APPROVED: [Signature] DATE: [Date]  
CHIEF TRAFFIC ENGINEER

APPROVED: [Signature] DATE: [Date]  
CHIEF ENGINEER

SHEET 5 of 9 TRAFFIC STANDARD No. 7714

DISTRICT	COUNTY	ROUTE	SECTION	SHEET



ST 4 I 9.2 - 25<sup>#</sup> SQ. FT. WIND LOAD  
ST 4 I 11.5 - 40<sup>#</sup> SQ. FT. WIND LOAD

FOR PIPE CAP DETAIL SEE SHEET 5.

SHIM AS REQUIRED TO PROVIDE TIGHT FIT.

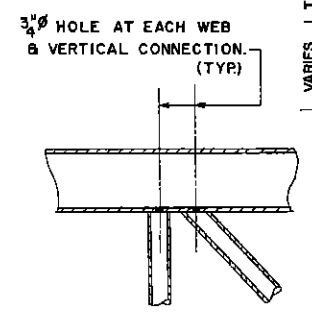
3 x 2 1/2 x 5/16 U-BOLT WITH LOCK NUTS AND STANDARD WASHER.

4\"/>

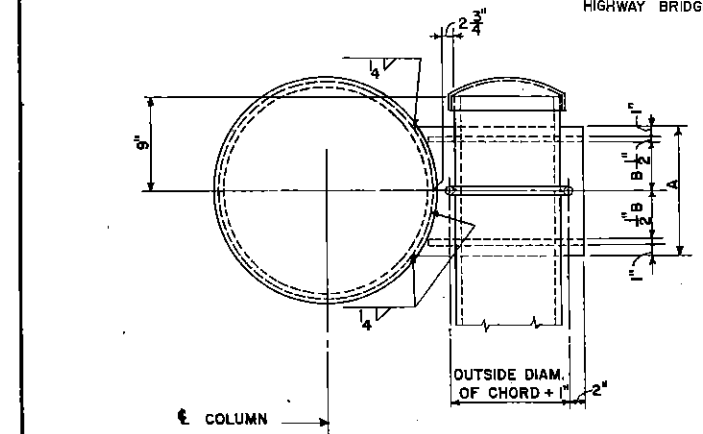
**NOTES**  
UNLESS OTHERWISE NOTED ON CONTRACT PLANS, USE BRACKETS FOR 25<sup>#</sup> PER SQ. FT. WIND LOAD. BRACKETS TO BE SPACED AT 6'-0\"/>

FOR WIND LOADS BETWEEN 25 lbs. PER SQ. FT. AND 40 lbs. PER SQ. FT. USE 40 lbs. PER SQ. FT. BRACKETS.

\* FOR SPECIAL LIGHT FIXTURE SUPPORT DETAILS FOR STRUCTURE MOUNTED ON HIGHWAY BRIDGE SEE SHEET 9A.

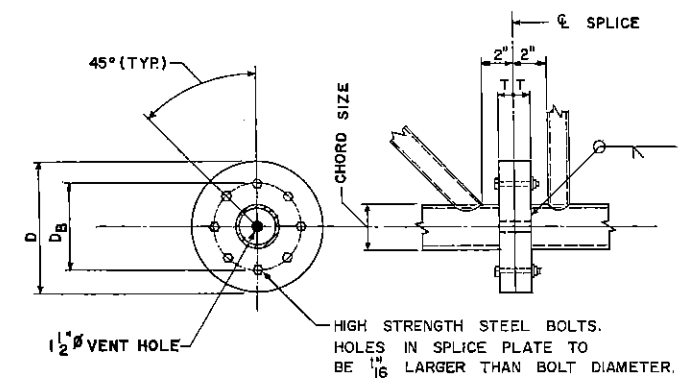


SECTION THRU TRUSS AT PANEL POINT



COLUMN SIZE	DIMENSION		WEIGHT OF TRUSS SEAT IN LBS. FOR CHORD SIZE		
	A	B	6\"/>		
8\"/>					

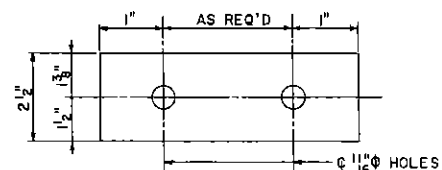
\* INCLUDES WEIGHT OF U-BOLT.



CHORD SPLICE

CHORD SIZE	D	D <sub>B</sub>	BOLTS	T	WEIGHT-LBS.*
6\"/>					

\* WEIGHT TABULATED IS THE WEIGHT OF ENTIRE SPLICE INCLUDING BOLTS.



PROVIDE 1 AT 1/4\"/>

**NOTES:**  
APPLY TORQUE OF 25 FT.-LBS. TO ALL 5/8\"/>

COMMONWEALTH OF PENNSYLVANIA  
DEPARTMENT OF TRANSPORTATION  
BUREAU OF TRAFFIC ENGINEERING

**OVERHEAD SIGN STRUCTURES  
SPANS TO 50'  
TRUSS DETAILS**

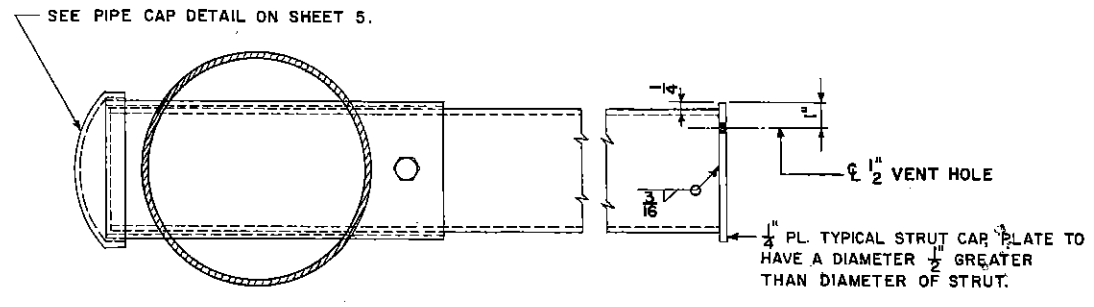
APPROVED: *[Signature]* DATE: *[Date]*  
APPROVED: *[Signature]* DATE: *[Date]*

SHEET 6 of 9  
TRAFFIC STANDARD No. 7714

DISTRICT	COUNTY	ROUTE	SECTION	SHEET

STRUT CONNECTION WEIGHTS														
COLUMN SIZE	STRUT SIZE AND CONNECTION TYPE													
	3"φ		3 1/2"φ		4"φ		5"φ		6"φ		8"φ		10"φ	
	A	B	A	B	A	B	A	B	A	B	A	B	A	B
4"φ	26.3	31.4	29.5	35.0	32.8	38.6	39.9	46.5	46.8	54.3	60.1	68.9	74.5	84.4
6"φ	29.1	34.2	32.7	38.1	36.3	42.1	44.2	50.8	51.8	59.3	66.6	75.4	81.6	92.4
8"φ	33.4	38.5	37.5	42.9	41.6	47.5	50.7	57.3	59.5	66.9	76.4	85.2	94.5	104.5
10"φ	36.0	41.1	40.4	45.9	44.9	50.8	54.7	61.3	64.2	71.6	82.4	91.2	102.0	112.0
12"φ	38.6	43.8	43.4	48.9	48.2	54.1	58.7	65.3	68.9	76.3	88.5	97.3	109.5	119.5
14"φ	41.3	46.4	46.4	51.8	51.5	57.4	62.7	69.3	73.6	81.1	94.5	103.3	116.9	126.9

**NOTE:**  
WEIGHTS GIVEN ARE IN POUNDS AND INCLUDE WEIGHT OF SLEEVE WITH CAP ONE BOLT WITH NUT AND WASHER FOR TYPE A CONNECTION AND THE WEIGHT OF SLEEVE AND TWO BOLTS WITH NUTS AND WASHERS FOR TYPE B CONNECTION.

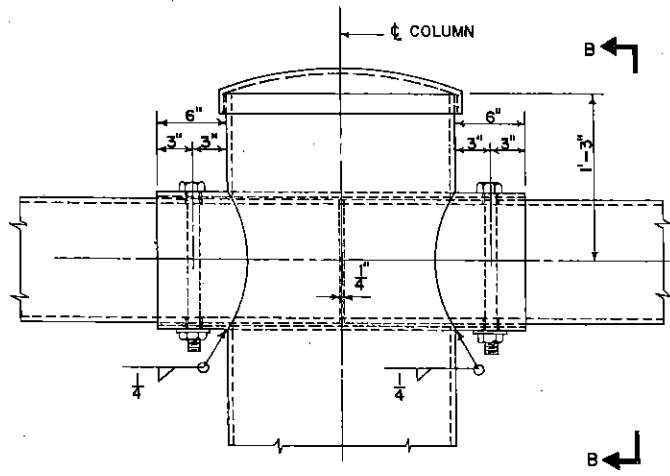


SECTION A-A

ST 3 I 6.25 { 25 LBS PER SQ. FT.-WIND LOAD  
40 LBS. PER SQ. FT.-WIND LOAD

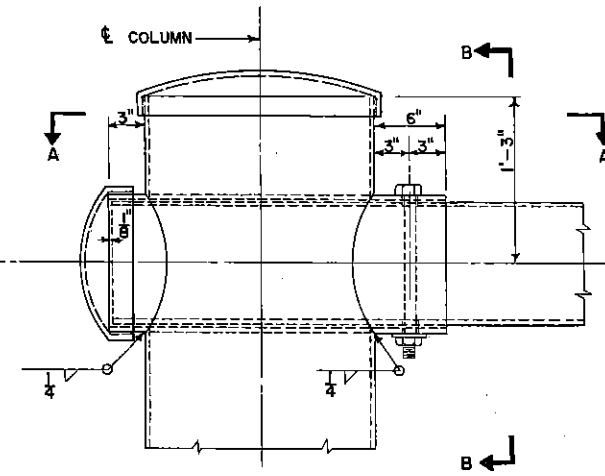
STRUT SIZE	WT.-LBS.
1"φ	0.86
2"φ	0.93
3"φ	1.01
4"φ	1.16
5"φ	1.31
6"φ	1.60
8"φ	1.90

**NOTE:**  
WEIGHTS GIVEN INCLUDE NUTS AND WASHERS



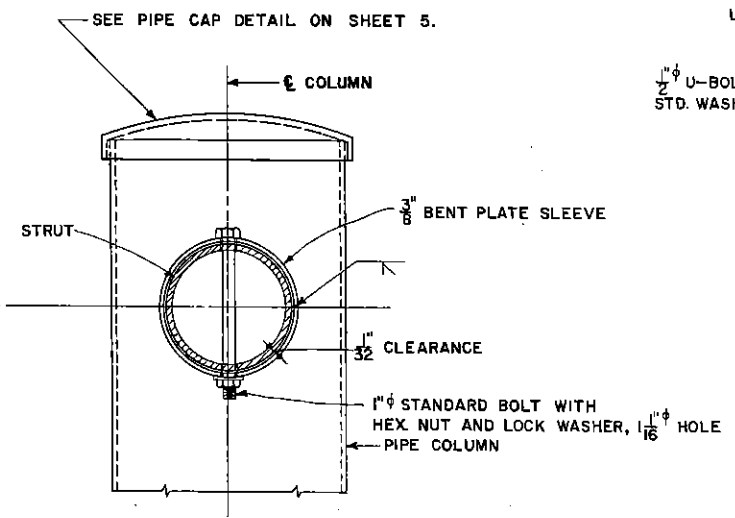
ELEVATION

STRUT CONNECTION TYPE "B"  
(FOR TYPE B CANTILEVERS AND CENTER MOUNTS.)

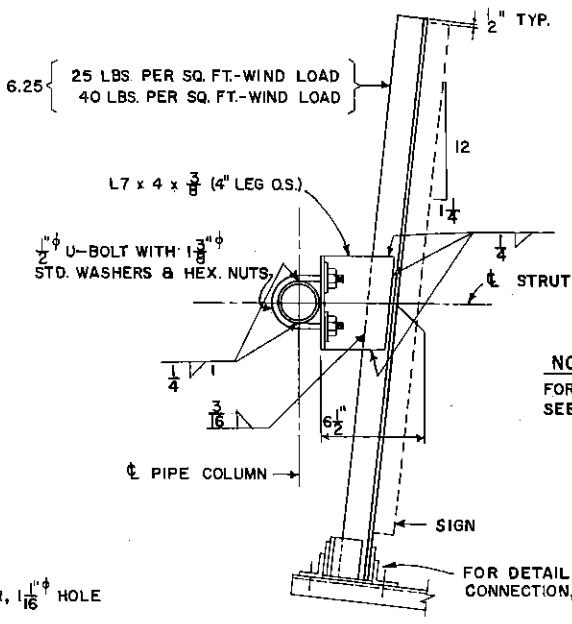


ELEVATION

STRUT CONNECTION TYPE "A"  
(FOR TYPE A CANTILEVERS)



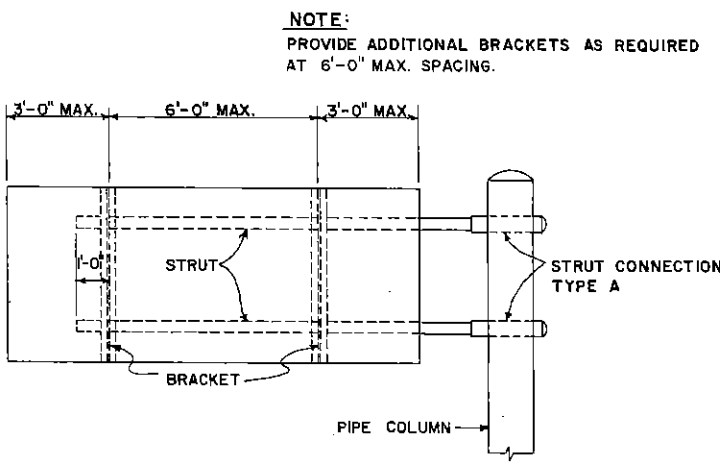
SECTION B-B



SINGLE STRUT SIGN SUPPORT BRACKET DETAIL

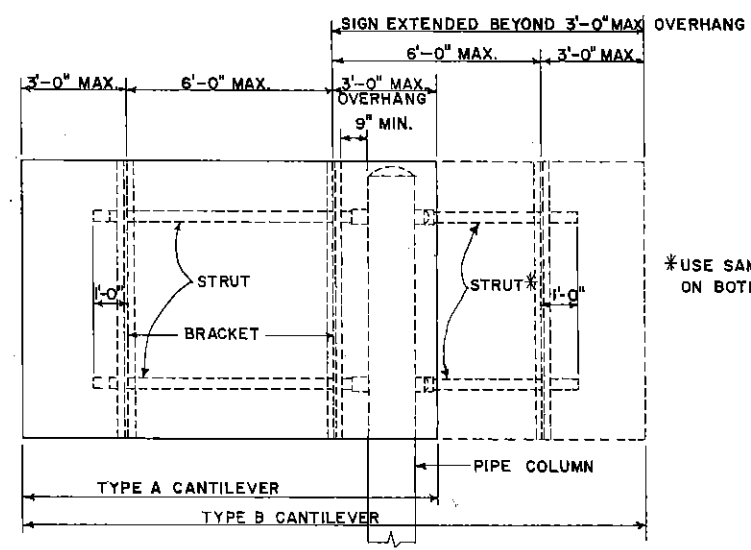
**NOTE:**  
FOR DOUBLE STRUT BRACKET DETAIL SEE SHEET 6.

**NOTE:**  
ALL MATERIAL FOR STRUT CONNECTIONS AND SIGN SUPPORT BRACKETS SHALL BE STRUCTURAL STEEL A.S.T.M. - A36.  
FOR DETAILS OF MOUNTING SIGNS TO SIGN SUPPORT BRACKET SEE STANDARD DRAWING 7716.

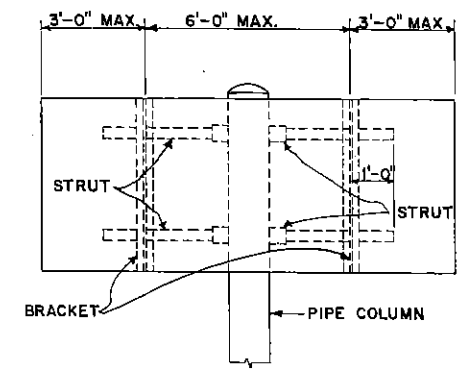


**NOTE:**  
PROVIDE ADDITIONAL BRACKETS AS REQUIRED AT 6'-0" MAX. SPACING.

TYPICAL BRACKET SPACING DIAGRAMS FOR CANTILEVERS



\*USE SAME SIZE STRUTS ON BOTH SIDES OF COLUMN



BRACKET SPACING DIAGRAM FOR CENTER MOUNTS

**NOTE:**  
PROVIDE ADDITIONAL BRACKETS AS REQUIRED AT 6'-0" MAX. SPACING

COMMONWEALTH OF PENNSYLVANIA  
DEPARTMENT OF HIGHWAYS  
TRAFFIC ENGINEERING BUREAU

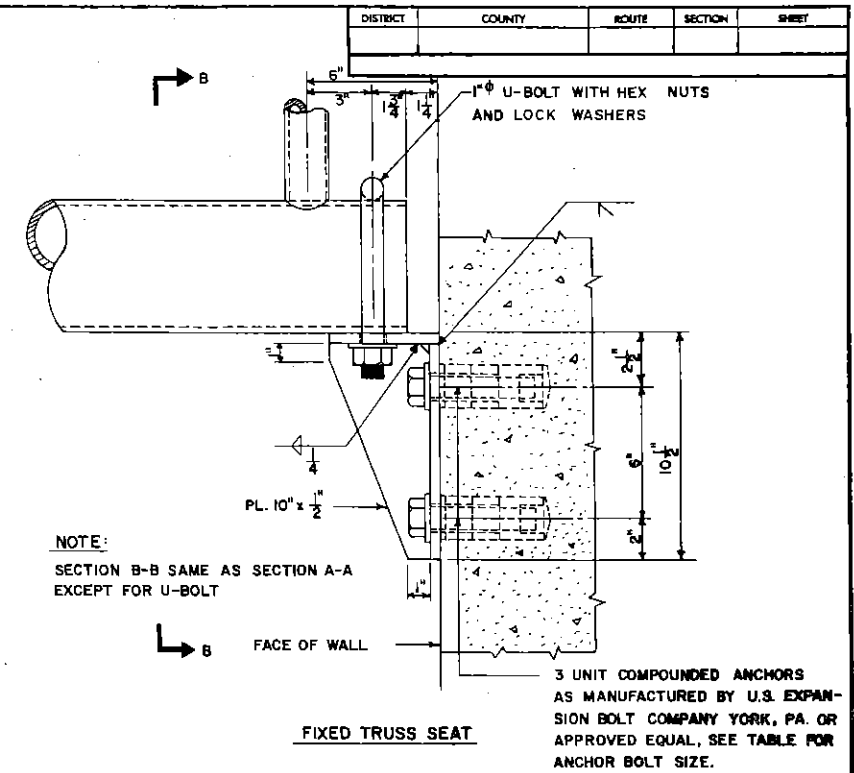
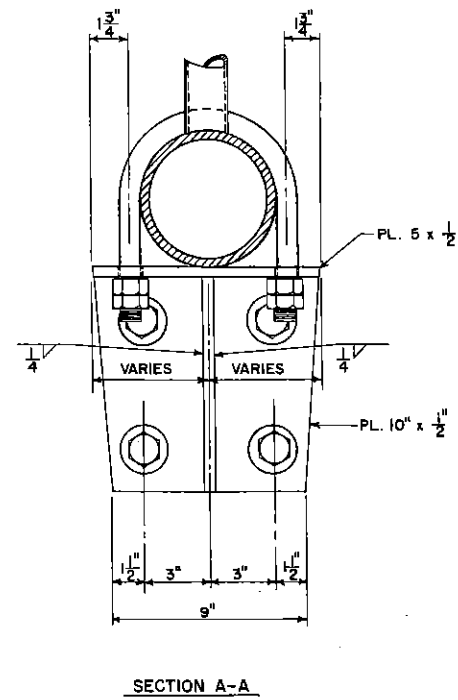
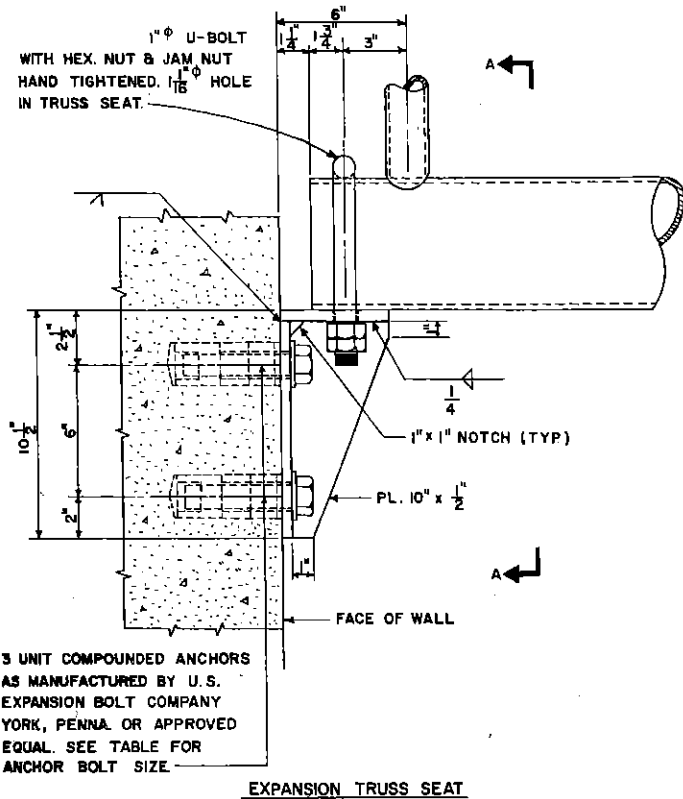
OVERHEAD SIGN STRUCTURES  
CANTILEVERS & CENTER MOUNTS  
BRACKET DETAILS

APPROVED: [Signature] CHIEF TRAFFIC ENGINEER DATE: [Date]  
APPROVED: [Signature] DATE: [Date]

SHEET 7 of 9 TRAFFIC STANDARD No. 7714

DESIGNED BY: J.A.K.  
DRAWN BY:



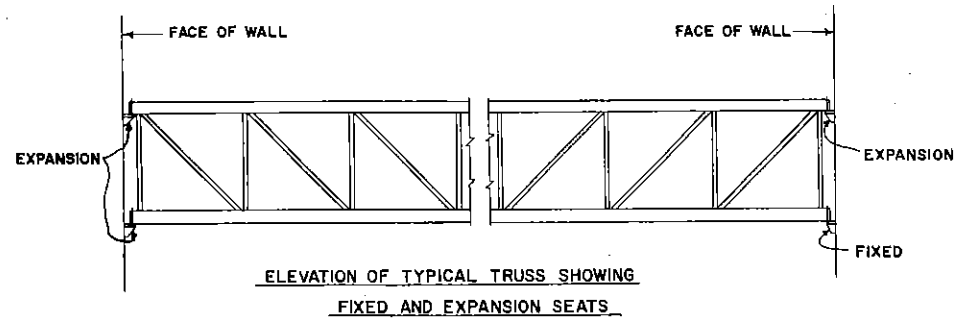


NOTE:  
SECTION B-B SAME AS SECTION A-A  
EXCEPT FOR U-BOLT

3 UNIT COMPOUNDED ANCHORS  
AS MANUFACTURED BY U.S. EXPAN-  
SION BOLT COMPANY YORK, PA. OR  
APPROVED EQUAL, SEE TABLE FOR  
ANCHOR BOLT SIZE.

TRUSS SEAT WEIGHTS*	
CHORD SIZE	WEIGHT
6" $\phi$	37 lbs.
8" $\phi$	42 lbs.
10" $\phi$	48 lbs.

\*INCLUDES WEIGHT OF U-BOLT.



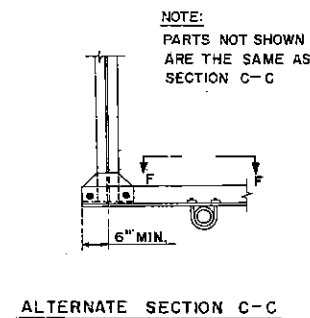
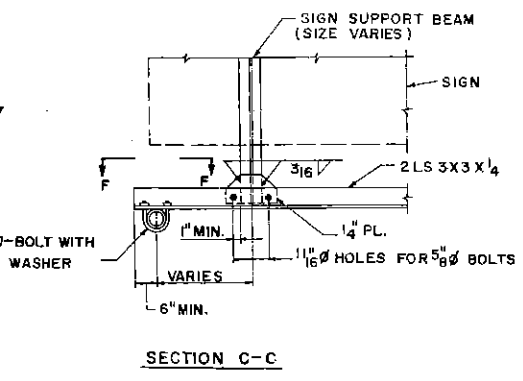
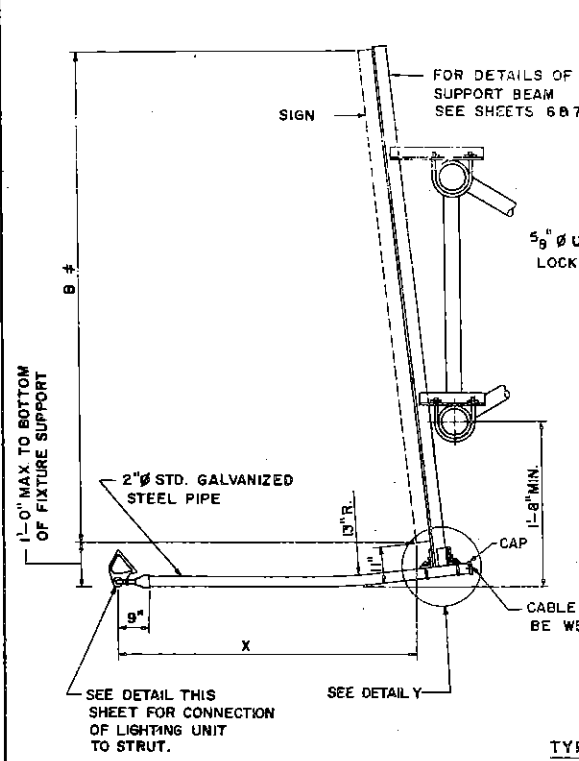
ANCHOR BOLTS		
WINDLOAD	BOLT	WASHER
25* S.F.	7/8" $\phi$	2 1/4" $\phi$ x 1/4"
40* S.F.	1 1/8" $\phi$	2 3/4" $\phi$ x 1/4"

FOR WIND LOADS BETWEEN 25 lbs. PER SQ. FT.  
AND 40 lbs. PER SQ. FT. USE 40 lbs. PER SQ. FT.  
UNLESS OTHERWISE NOTED ON CONTRACT PLANS,  
USE 25\* PER SQ. FT. WIND LOAD.

NOTE:  
ALL MATERIAL FOR BASE DETAILS SHALL BE  
STRUCTURAL STEEL A.S.T.M.-A36 & GALVANIZED  
CONFORMING TO P.D.H. SPECIFICATIONS CURRENT  
FORM 409.

COMMONWEALTH OF PENNSYLVANIA DEPARTMENT OF TRANSPORTATION BUREAU OF TRAFFIC ENGINEERING		
OVERHEAD SIGN STRUCTURES SPANS TO 50' WALL MOUNTED TRUSS BEARING DETAIL		
APPROVED	DATE	
APPROVED	DATE	
SHEET 8 of 9	TRAFFIC STANDARD	No. 7714

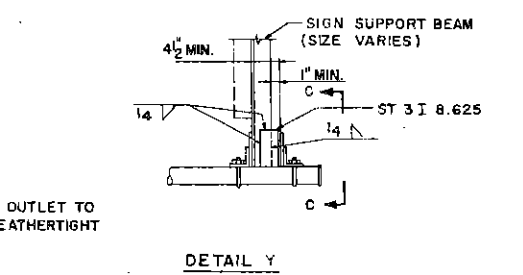
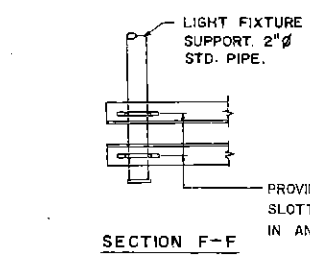
DISTRICT	COUNTY	ROUTE	SECTION	SHEET
----------	--------	-------	---------	-------



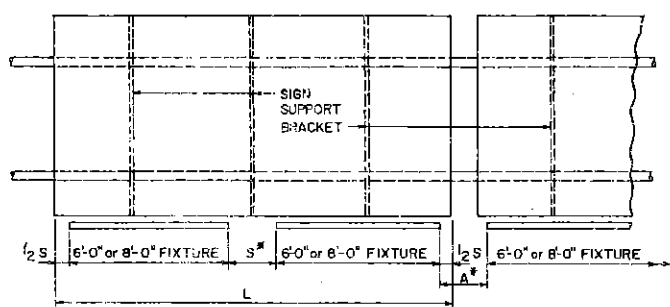
NOTE: PARTS NOT SHOWN ARE THE SAME AS SECTION C-C

5/8" U-BOLTS	SHAFT SIZE	WT. LBS*
6"	1/2"	1.83
8"	3/4"	2.38
10"	1"	2.71
12"	1 1/4"	3.16
14"	1 1/2"	3.60
16"	1 3/4"	4.04
18"	2"	4.50
20"	2 1/4"	4.93
24"	3"	5.85

\* INCLUDES WEIGHT OF NUTS & WASHERS.



TYPICAL LIGHT FIXTURE SUPPORT DETAILS



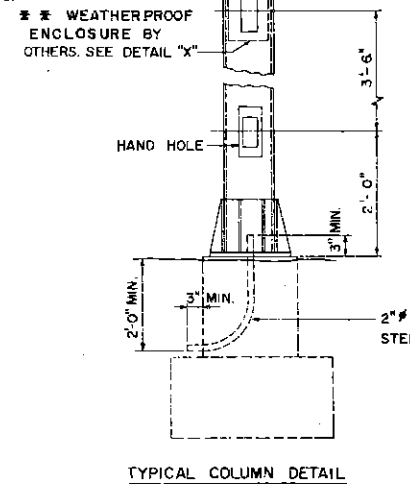
\* WHEN EXIT PANEL IS USED, DIMENSION "B" IS MEASURED TO TOP OF EXIT PANEL.

\* WHEN "S" OR "A" IS EQUAL TO OR LESS THAN 1'-3" USE COMMON SUPPORT FOR ADJACENT FIXTURES. EXACT METHOD OF MOUNTING SHALL BE DETERMINED BY THE LIGHTING FIXTURES FURNISHED, JOB CONDITIONS AND THE ENGINEER IN CHARGE OF CONSTRUCTION.

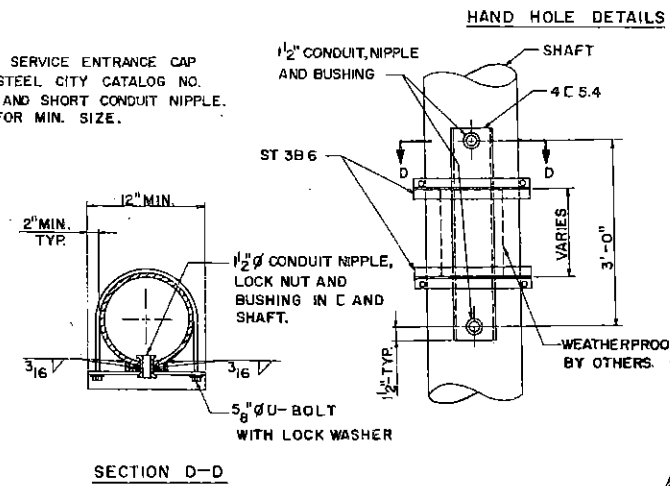
B#	L	NO. OF FIXTURES
3'-0" TO 16'-0"	6-90 FT.	1
	9.5-11.5 FT.	2
	12-17.5 FT.	2
	18-20 FT.	3
	20.5-22.5 FT.	2
	23-27 FT.	3
	27.5-30 FT.	2

W. P. SERVICE ENTRANCE CAPS	
NO. OF SIGNS	CAP SIZE
1	3/4"
2	1"
3	1 1/4"
4	1 1/2"
5	1 1/2"

B#	X
3'-0" to 5'-0"	2'-6"
5'-1" to 6'-6"	3'-0"
6'-7" to 10'-0"	4'-6"
10'-1" to 15'-0"	6'-0"
15'-1" to 16'-0"	7'-0"

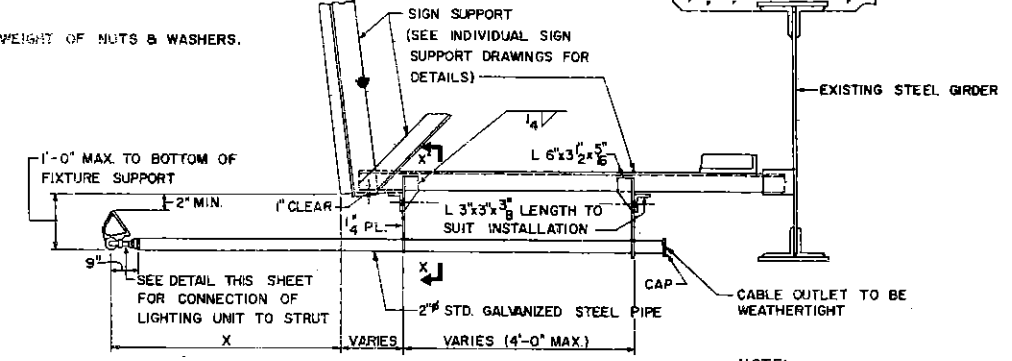


DRILL & TAP THROUGH COVER PLATE FOR 8-32x2 LONG PHILLIPS HD. ROUND HD. MACHINE SCREWS

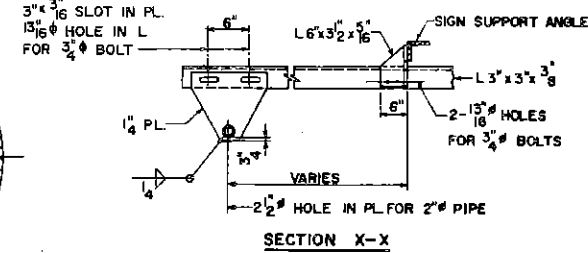
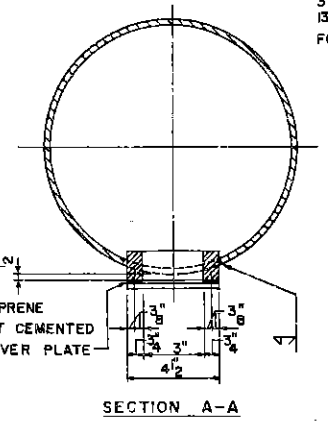


\*\* MATERIAL AND EQUIPMENT NOTED "BY OTHERS" IS TO BE FURNISHED & INSTALLED UNDER SIGNING CONTRACT WHEN ELECTRICAL WORK IS A PART OF THAT CONTRACT.

NOTE: DETAILS SHOWN ARE FOR LOCATIONS WHERE BOTTOM SIGN SUPPORT ANGLE IS HORIZONTAL. DETAILS FOR SLOPING BOTTOM SIGN SUPPORT ARE SIMILAR. SEE DETAILS OF INDIVIDUAL STRUCTURE.



NOTE: EXISTING STEEL BRIDGE SHOWN. DETAILS FOR EXISTING CONCRETE BRIDGE SIMILAR.



- NOTES:
- MATERIAL FOR STEEL PIPE SUPPORTS SHALL BE STRUCTURAL STEEL PIPE A.S.T.M. A53 BUTT WELD.
  - OTHER STEEL COMPONENTS SHALL BE STRUCTURAL CARBON STEEL A.S.T.M.-36, UNLESS NOTED.
  - CAPS ON ENDS OF PIPE SHALL BE MADE WEATHERTIGHT AND SHALL BE REMOVABLE.
  - STEEL PIPE SUPPORTS AND STEEL FOR HAND HOLE DETAIL SHALL BE GALVANIZED IN ACCORDANCE WITH R.D.H. SPECIFICATIONS, CURRENT FORM 409.
  - ALL OUTLET FITTINGS SHALL BE 90° ELBOWS, UNLESS NOTED.
  - LAMP FIXTURES SHALL BE ALUMINUM, FLUOROFLOOD FLUORESCENT AS MANUFACTURED BY GENERAL ELECTRIC CO., FLUORESIGN FLUORESCENT AS MANUFACTURED BY REVERE ELECTRIC MANUFACTURING COMPANY OR APPROVED EQUAL FIXTURES FURNISHED BY OTHERS.

FLUORESCENT

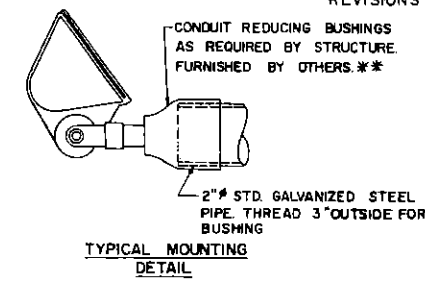
COMMONWEALTH OF PENNSYLVANIA  
DEPARTMENT OF TRANSPORTATION  
BUREAU OF TRAFFIC ENGINEERING

OVERHEAD SIGN STRUCTURES  
SPANS TO 50'-0"  
CANTILEVERS & CENTER MOUNTS  
LIGHT SUPPORT & HAND HOLE DETAILS

APPROVED \_\_\_\_\_ DATE \_\_\_\_\_  
CHIEF TRAFFIC ENGINEER

APPROVED \_\_\_\_\_ DATE \_\_\_\_\_  
CHIEF ENGINEER

SHEET 9 of 9 TRAFFIC STANDARD No. 7714



REVISIONS

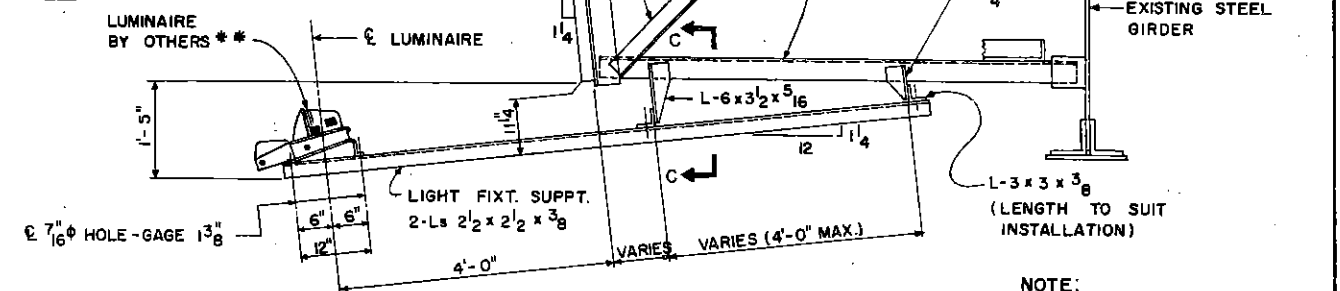
NO.	DESCRIPTION

DISTRICT	COUNTY	ROUTE	SECTION	SHEET
----------	--------	-------	---------	-------

5/8" U-BOLTS	
SHAFT SIZE	WT. LBS.
6"	1.83
8"	2.38
10"	2.71
12"	3.18
14"	3.60
16"	4.04
18"	4.50
20"	4.93
24"	5.85

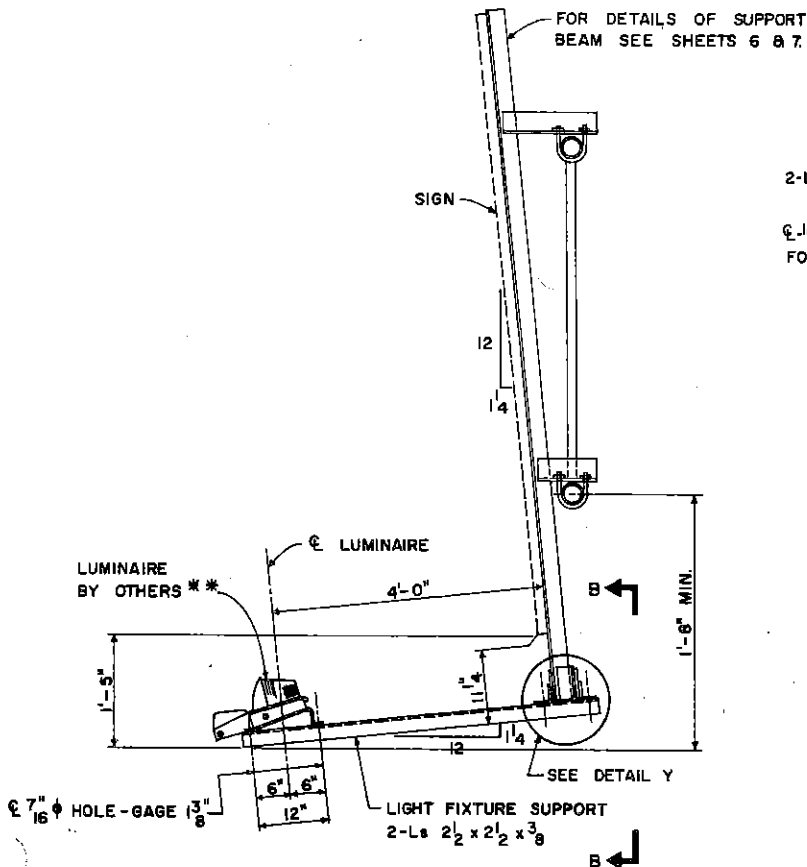
NOTE:  
DETAILS SHOWN ARE FOR LOCATIONS WHERE BOTTOM SIGN SUPPORT ANGLE IS HORIZONTAL. DETAILS FOR SLOPING BOTTOM SIGN SUPPORT ARE SIMILAR. SEE DETAILS OF INDIVIDUAL STRUCTURE.

\* INCLUDES WEIGHT OF NUTS & WASHERS.

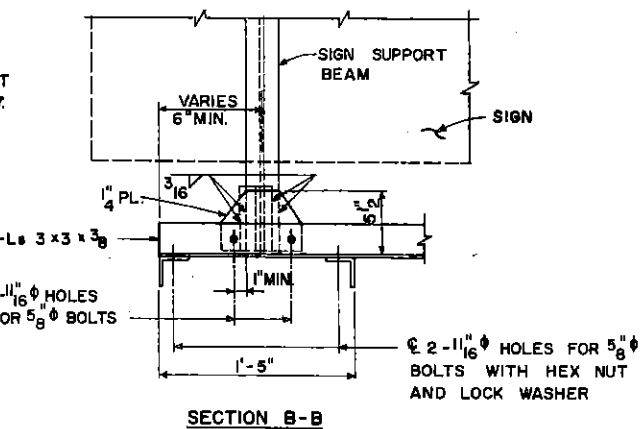


TYPICAL LIGHT SUPPORT DETAILS FOR SIGNS MOUNTED TO EXISTING BRIDGE STRUCTURES

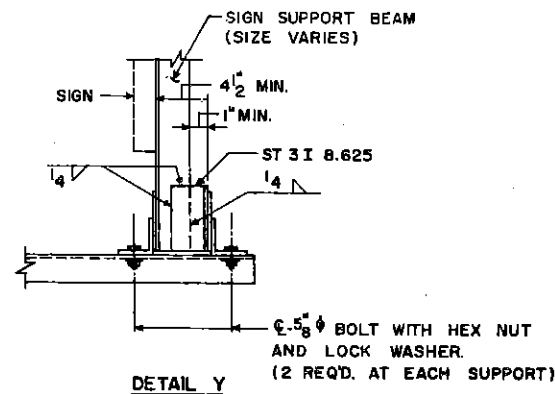
NOTE:  
EXISTING STEEL BRIDGE SHOWN. DETAILS FOR EXISTING CONCRETE BRIDGE SIMILAR.



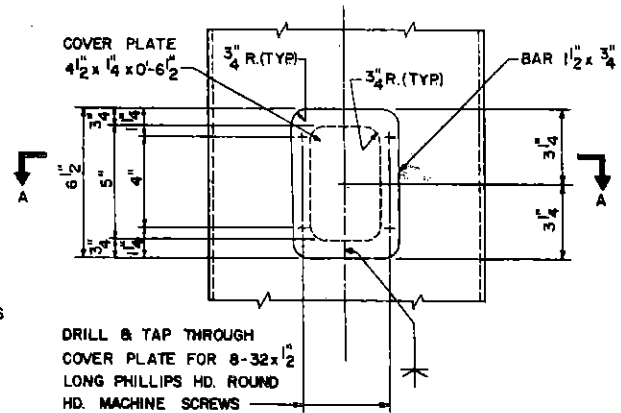
TYPICAL LIGHT FIXTURE SUPPORT DETAILS



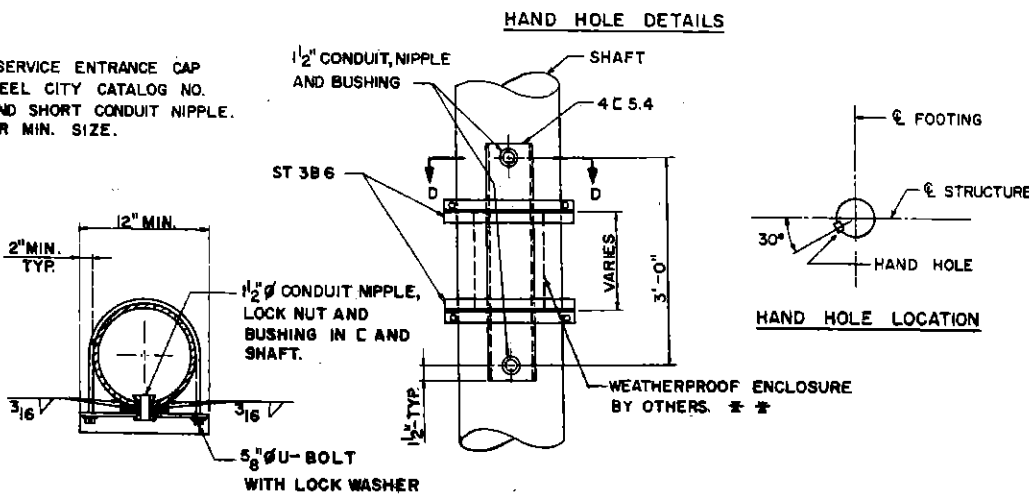
SECTION B-B



DETAIL Y



SECTION A-A



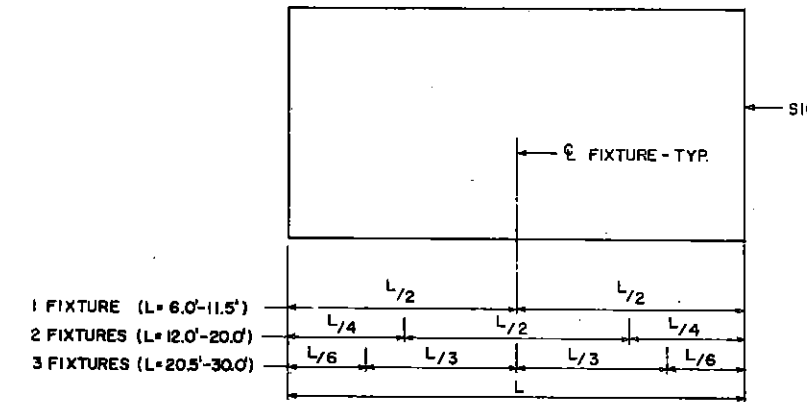
HAND HOLE DETAILS

SECTION D-D

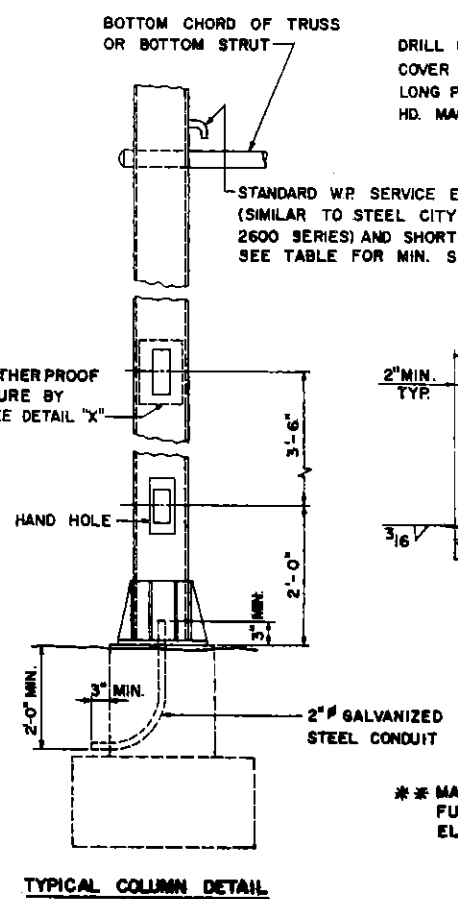
DETAIL X

\*\* MATERIAL AND EQUIPMENT NOTED "BY OTHERS" IS TO BE FURNISHED & INSTALLED UNDER SIGNING CONTRACT WHEN ELECTRICAL WORK IS A PART OF THAT CONTRACT.

- NOTES:
- MATERIAL FOR STEEL PIPE SUPPORTS SHALL BE STRUCTURAL STEEL PIPE A.S.T.M. A53 BUTT WELD.
  - OTHER STEEL COMPONENTS SHALL BE STRUCTURAL CARBON STEEL A.S.T.M.-A36 UNLESS NOTED.
  - STEEL PIPE SUPPORTS AND STEEL FOR HAND HOLE DETAIL SHALL BE GALVANIZED IN ACCORDANCE WITH P.D.H. SPECIFICATIONS, CURRENT FORM 409.
  - ALL OUTLET FITTINGS SHALL BE 90° ELBOWS, UNLESS NOTED.
  - LAMP FIXTURES SHALL BE "WALLPAK" LUMINAIRES AS MANUFACTURED BY HOLOPHANE COMPANY INC. OR APPROVED EQUAL FIXTURES FURNISHED BY OTHERS. \*\*



LIGHT FIXTURE SPACING



TYPICAL COLUMN DETAIL

W. P. SERVICE ENTRANCE CAPS	
NO. OF SIGNS	CAP SIZE
1	3/4"
2	1"
3	1 1/4"
4	1 1/2"
5	1 3/4"

LUMINAIRE

COMMONWEALTH OF PENNSYLVANIA  
DEPARTMENT OF TRANSPORTATION  
BUREAU OF TRAFFIC ENGINEERING

OVERHEAD SIGN STRUCTURES  
SPANS TO 50'-0"  
CANTILEVERS & CENTER MOUNTS  
LIGHT SUPPORT & HAND HOLE DETAILS

APPROVED \_\_\_\_\_ DATE \_\_\_\_\_  
CHIEF TRAFFIC ENGINEER

APPROVED \_\_\_\_\_ DATE \_\_\_\_\_  
CHIEF ENGINEER

8-4-71  
3-30-71  
REVISIONS

SHEET 2 OF 2  
TRAFFIC STANDARD No. 7714

