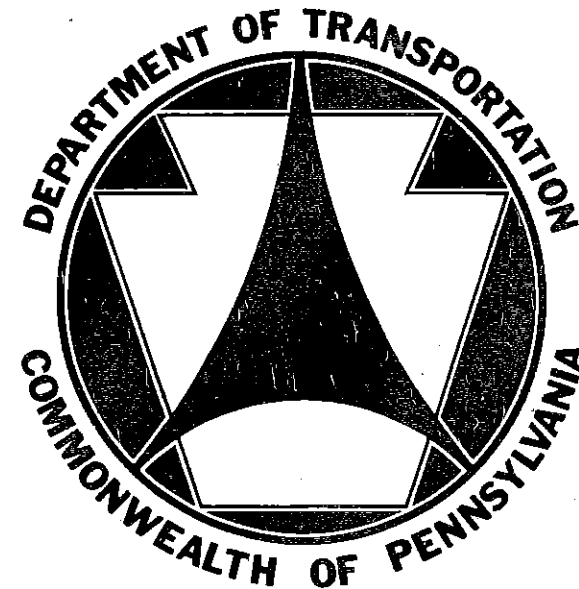


TC-7700 SERIES
TC-7702 A to E

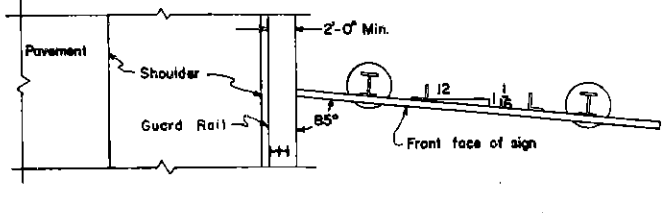
COMMONWEALTH OF PENNSYLVANIA DEPARTMENT OF TRANSPORTATION



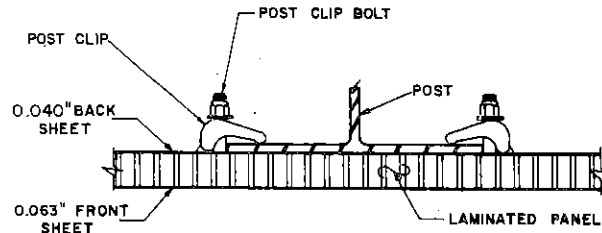
TRAFFIC STANDARDS SIGNING

~~11-13-70~~
11-13-70

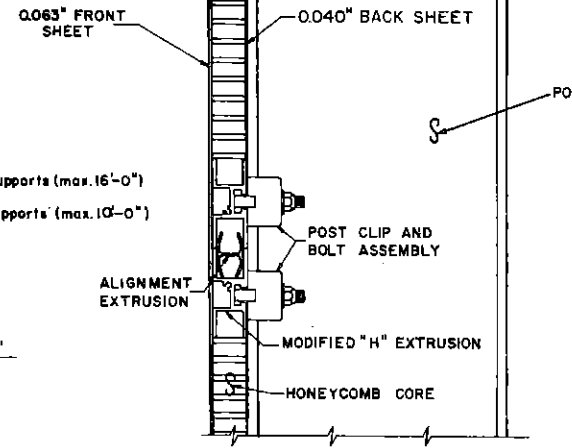
DISTRICT	COUNTY	ROUTE	SECTION	SHEET



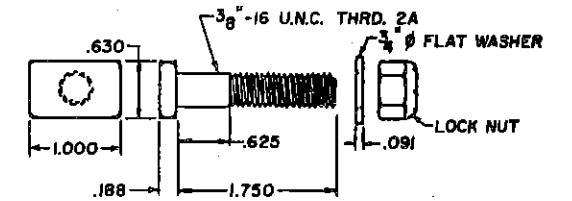
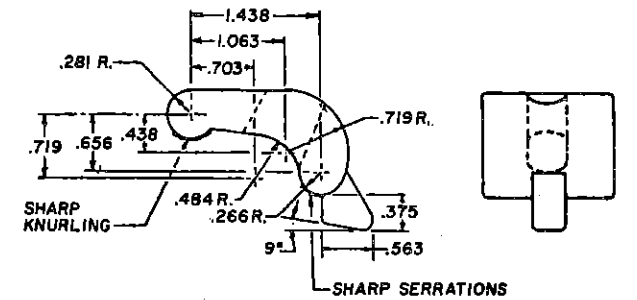
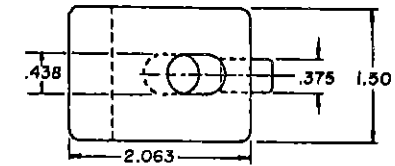
PLAN VIEW



SECTION A-A



SECTION B-B

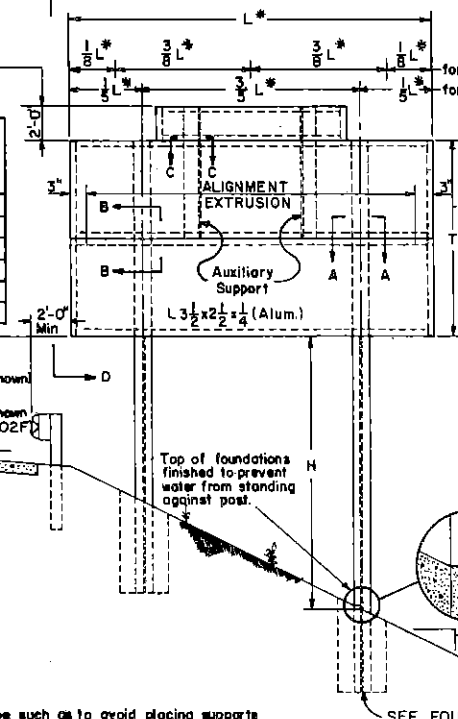


POST CLIP AND BOLT

GENERAL NOTES

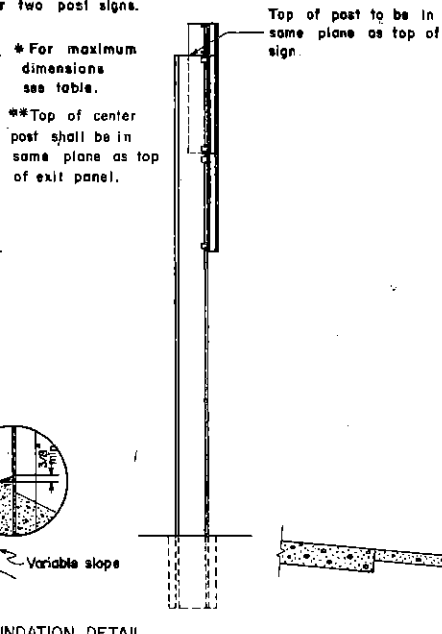
- When two independent signs are mounted as a single installation the post supports shall be calculated with the total area of the two signs being considered as the area of one sign, including allowance for a vertical space of six (6) inches between the two signs. Other mounting details shall be as depicted for one sign.
- To determine beam section required for posts, using "H", "L", "T" dimensions, see Traffic Construction Standard 7702A, sheet 5 of 5.
- For details of Laminated Panel sign see Traffic Construction Standard 7705A.

Maximum Dimensions for Post Spacing	1" Panel	2" Panel
2 Post Sign	1/2 L 3'-0"	4'-0"
3 Post Sign	1/3 L 9'-0"	12'-0"
	L 15'-0"	20'-0"
	1/2 L 3'-0"	3'-9"
	3/8 L 9'-0"	11'-3"
	L 24'-0"	30'-0"

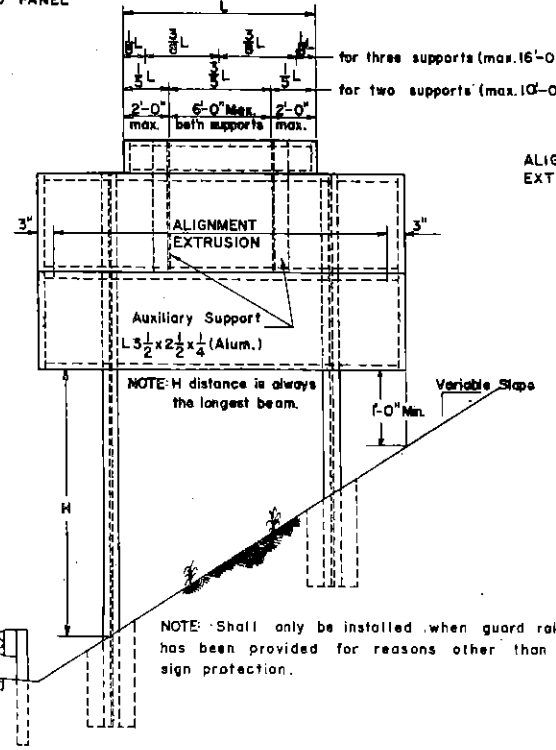


SIGN ELEVATION

TYPICAL FILL SECTION



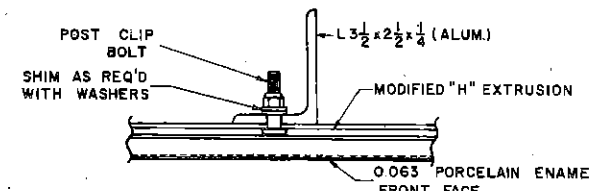
SECTION D-D



SIGN ELEVATION

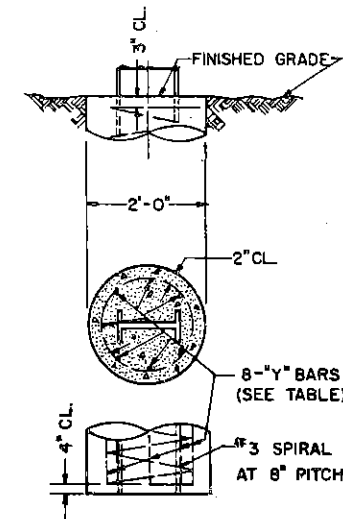
TYPICAL CUT SECTION

DIMENSIONS, ELEVATIONS, SLOPES & SITUATIONS SHOWN ARE FOR ILLUSTRATIVE PURPOSES ONLY AND ACTUAL CASES WOULD DEPEND ON FIELD CONDITIONS



SECTION C-C

Location of sign shall be such as to avoid placing supports in drainage ditches.



FOUNDATION DETAIL

FOUNDATION DATA		
POST SIZE	FTG. DEPTH*	"Y" BARS
S4X7.7	3'-0"	8#6
W6X8.5	3'-0"	8#6
W6X12	3'-0"	8#6
W6X15.5	3'-6"	8#6
W8X17	5'-0"	8#6
W8X20	5'-6"	8#6
W10X21	6'-0"	8#6
W10X25	7'-0"	8#6
W12X27	7'-6"	8#7

* Post Imbedment is same as Fig. Depth.

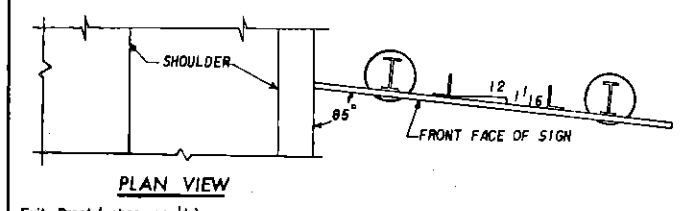
NOTE: IF SOLID ROCK IS ENCOUNTERED 2' OR LESS ABOVE THE BOTTOM OF THE FOOTING EXTEND THE FOOTING INTO THE ROCK THE TABULATED FOOTING DEPTH. IF SOLID ROCK IS ENCOUNTERED MORE THAN 2' ABOVE THE BOTTOM OF THE FOOTING EXTEND THE FOOTING INTO THE ROCK 2' MINIMUM.

REVISIONS
R3 5-9-73
2 5-23-71
1 11-13-70

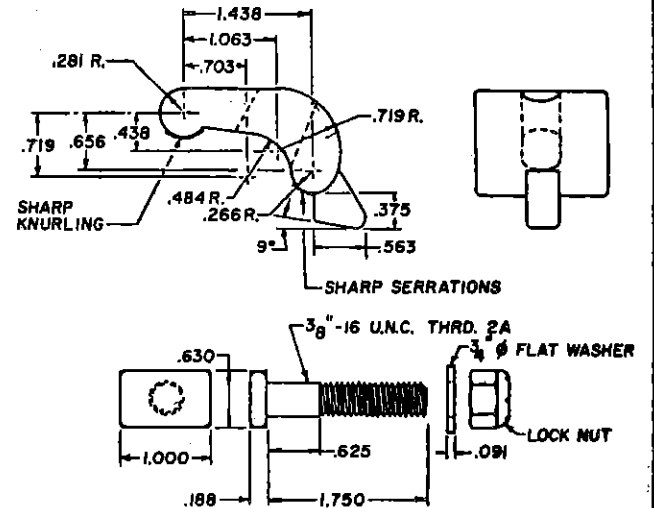
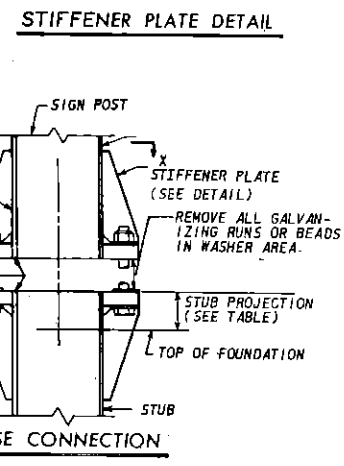
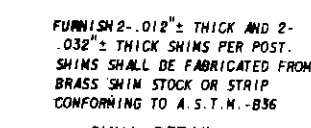
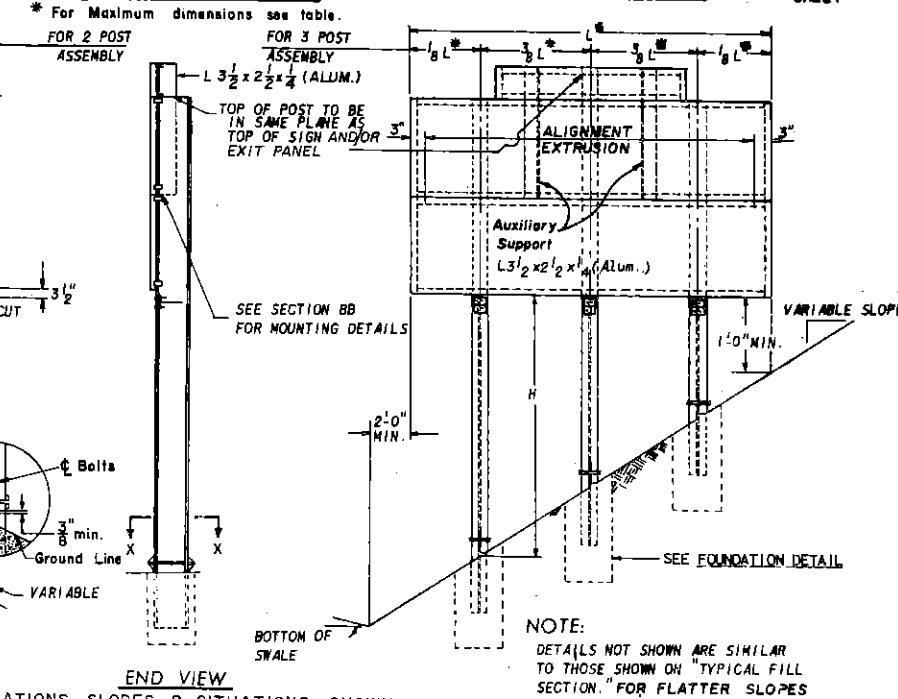
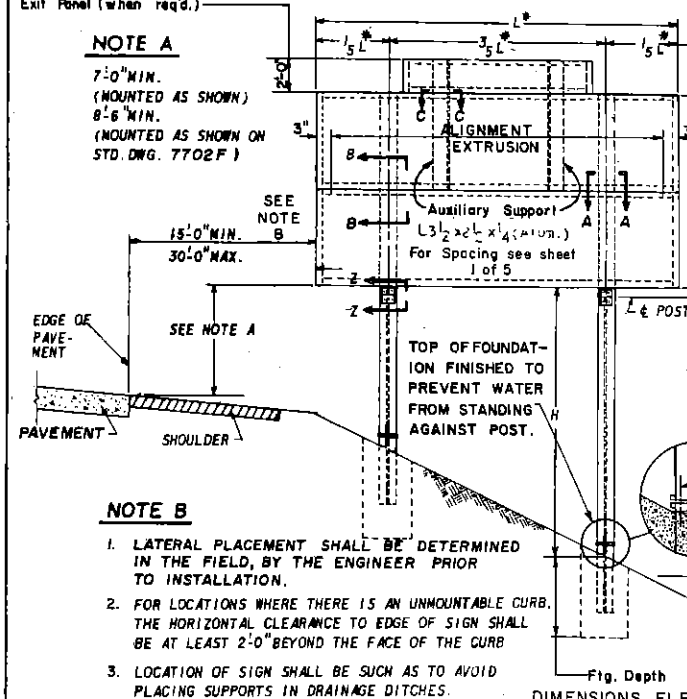
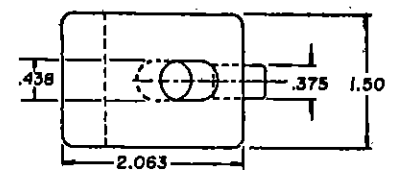
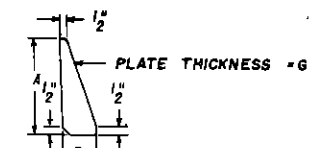
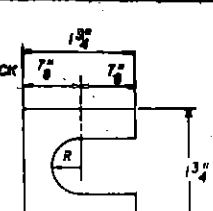
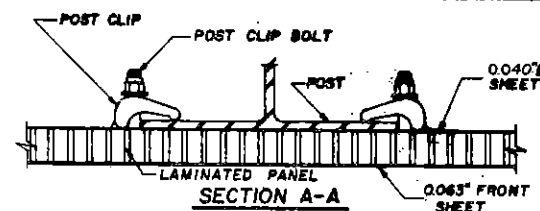
Commonwealth of Pennsylvania
DEPARTMENT OF TRANSPORTATION
BUREAU OF TRAFFIC ENGINEERING

**POST MOUNTED SIGNS, TYPE A
(LAMINATED PANEL SIGNS)**

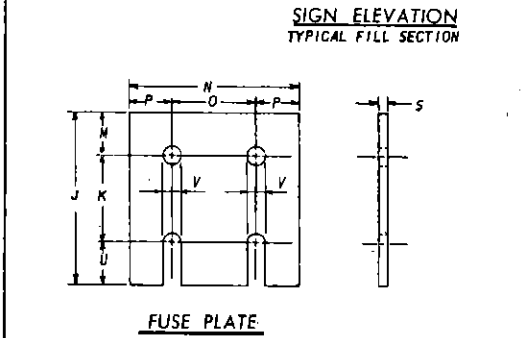
Recommended	Approved	Sht. 1 of 5
Director, Bureau of Traffic Engineering	Deputy Chief Highway Engineer	TC 7702 A



Maximum Dimensions for Post Spacing	1" Panel		2 1/2" Panel	
	1/8 L	3'-0"	4'-0"	12'-0"
2 Post Sign	3/8 L	9'-0"	12'-0"	
	L	15'-0"	20'-0"	
3 Post Sign	1/8 L	3'-0"	3'-9"	
	3/8 L	9'-0"	11'-3"	
	L	24'-0"	30'-0"	



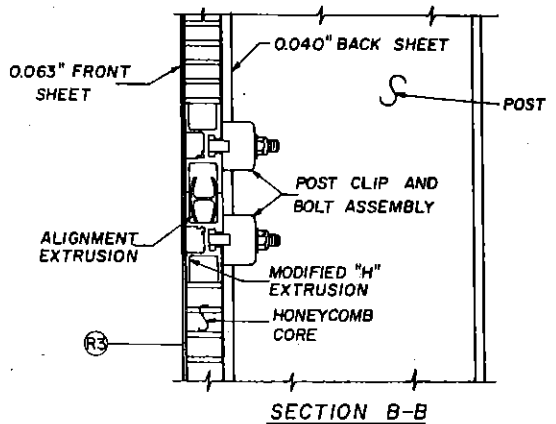
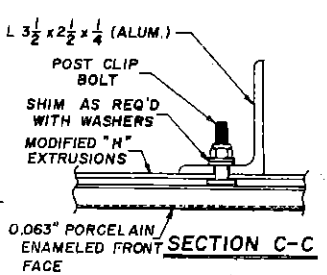
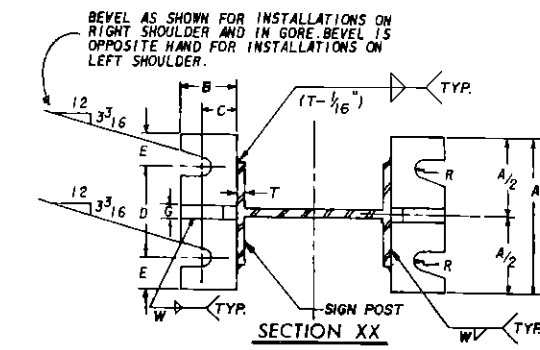
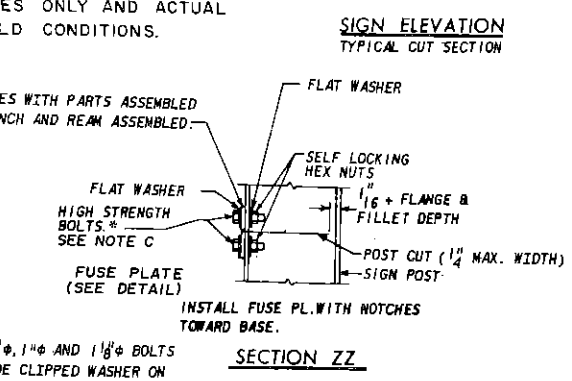
- ASSEMBLY INSTRUCTIONS**
1. ASSEMBLE POST TO STUB WITH BOLTS AND WITH ONE FLAT WASHER ON EACH BOLT BETWEEN PLATES.
 2. SHIM AS REQUIRED TO PLUMB POST.
 3. TIGHTEN BOLTS IN A SYSTEMATIC ORDER TO THE PRESCRIBED TORQUE. (SEE TABLE)
 4. LOOSEN EACH BOLT AND RETIGHTEN TO PRESCRIBED TORQUE IN THE SAME ORDER AS INITIAL TIGHTENING.
 5. BURR THREADS AT JUNCTION WITH NUT USING A CENTER PUNCH TO PREVENT NUT LOOSENING.



NOTE
FUSE BOLTS SHALL BE TIGHTENED IN THE SHOP FOLLOWING A METHOD APPROVED BY THE ENGINEER. TIGHTENING SHALL BE TO SUCH A DEGREE AS TO OBTAIN THE FOLLOWING RESIDUAL TENSION IN EACH BOLT

BOLT SIZE	RESIDUAL TENSION
5/8"	19,200 LB.
3/4"	28,400 LB.
7/8"	36,050 LB.
1"	47,250 LB.
1 1/8"	56,450 LB.

FOR 3/4", 1" AND 1 1/8" BOLTS PROVIDE CLIPPED WASHER ON INSIDE FLANGE.



- GENERAL NOTES**
- For details of Laminated Panel sign see Traffic Construction Standard 7705 A.
 - See sheet 5 of 5 of 7702A for beam section required for post.

POST SIZE	FOUNDATION DATA				BASE CONNECTION DATA										FUSE PLATE DATA											
	FTG. DEPTH	STUB LENGTH	STUB PROJ.	BARS	BOLT DIAM. & TORQUE	A	B	C	D	E	F	G	W	R	BOLT DIAM.	J	K	M	N	O	P	U	S	V		
W6x8.5	3'-0"	2'-0"	3"	8#6	5/8" -450 LB	5"	2"	1 1/4"	2 3/4"	1 1/8"	3/4"	1 1/2"	1 1/4"	1 1/2"	5/8"	3 1/2"	2 1/2"	1 1/8"	4 1/2"	2 1/4"	1 1/8"	3 1/4"	1 1/4"	1 1/8"		
W6x12	3'-0"	2'-0"	3"	8#6	5/8" -450 LB	5"	2"	1 1/4"	2 3/4"	1 1/8"	3/4"	1 1/2"	1 1/4"	1 1/2"	5/8"	4 3/8"	2 3/8"	1 1/8"	4 3/8"	2 1/4"	1 1/8"	3 1/4"	1 1/4"	1 1/8"		
W6x15.5	3'-6"	2'-6"	3"	8#6	5/8" -450 LB	5"	2"	1 1/4"	2 3/4"	1 1/8"	3/4"	1 1/2"	1 1/4"	1 1/2"	7/8"	5 5/8"	3 1/4"	1 1/2"	6 1/2"	3 1/2"	1 1/2"	7 1/8"	3 1/8"	1 5/8"		
W8x17	5'-0"	2'-6"	3"	8#7	5/8" -450 LB	5"	2"	1 1/4"	2 3/4"	1 1/8"	3/4"	1 1/2"	1 1/4"	1 1/2"	1 1/4"	6 1/2"	3 3/4"	1 3/4"	6 1/4"	2 3/4"	1 3/4"	1 1/8"	3 3/8"	1 1/8"		
W8x20	5'-6"	3'-0"	2 1/2"	8#8	3/4" -750 LB	6"	2 1/4"	1 3/8"	3 1/2"	1 1/4"	1"	3 1/4"	3 1/8"	1 1/2"	1 1/4"	6 1/2"	3 3/4"	1 3/4"	6 1/4"	2 3/4"	1 3/4"	1 1/8"	3 3/8"	1 1/8"		
W10x21	6'-0"	3'-0"	2 1/2"	8#9	3/4" -750 LB	6"	2 1/4"	1 3/8"	3 1/2"	1 1/4"	1"	3 1/4"	3 1/8"	1 1/2"	1 1/4"	7 3/8"	4 1/4"	2 1/4"	7 1/8"	3 1/2"	2 1/8"	1 1/8"	1 1/2"	1 1/8"		
W10x25	7'-0"	3'-0"	2 1/2"	8#10	3/4" -750 LB	6"	2 1/4"	1 3/8"	3 1/2"	1 1/4"	1"	3 1/4"	3 1/8"	1 1/2"	1 1/4"	7 3/8"	4 1/4"	2 1/4"	7 1/8"	3 1/2"	2 1/8"	1 1/8"	1 1/2"	1 1/8"		
W12x27	7'-6"	3'-0"	2 1/2"	8#11	3/4" -750 LB	6"	2 1/4"	1 3/8"	3 1/2"	1 1/4"	1"	3 1/4"	3 1/8"	1 1/2"	1 1/4"	7 3/8"	4 1/4"	2 1/4"	7 1/8"	3 1/2"	2 1/8"	1 1/8"	1 1/2"	1 1/8"		

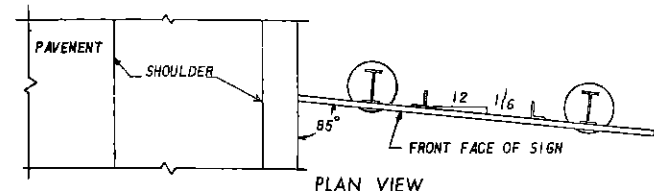
NOTE: IF SOLID ROCK IS ENCOUNTERED 2' OR LESS ABOVE THE BOTTOM OF THE FOOTING EXTEND THE FOOTING INTO THE ROCK TO THE TABULATED FOOTING DEPTH. IF SOLID ROCK IS ENCOUNTERED MORE THAN 2' ABOVE THE BOTTOM OF THE FOOTING EXTEND THE FOOTING INTO THE ROCK 2' MINIMUM OR AS REQUIRED TO PROVIDE THE TABULATED STUB PROJECTION.

Commonwealth of Pennsylvania
DEPARTMENT OF TRANSPORTATION
BUREAU OF TRAFFIC ENGINEERING

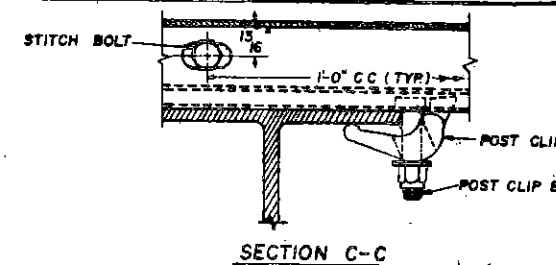
**POST MOUNTED SIGNS, TYPE A
BREAK-AWAY
(LAMINATED PANEL SIGN)**

REVISIONS	1	5-11-73
	2	5-25-71
	1	11-13-70

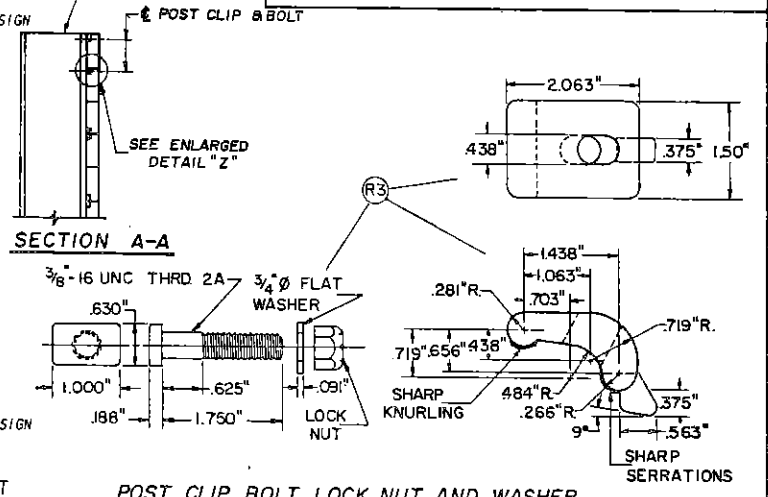
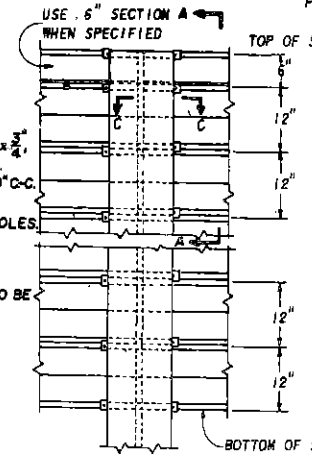
Recommended	Approved	Sht. 3 of 5
Director, Bureau of Traffic Engineering	Deputy Chief Highway Engineer	TC 7702 A



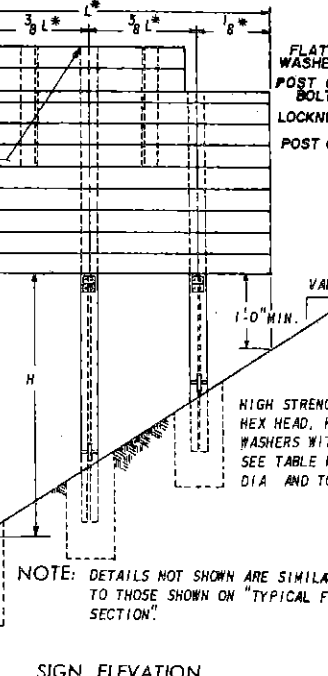
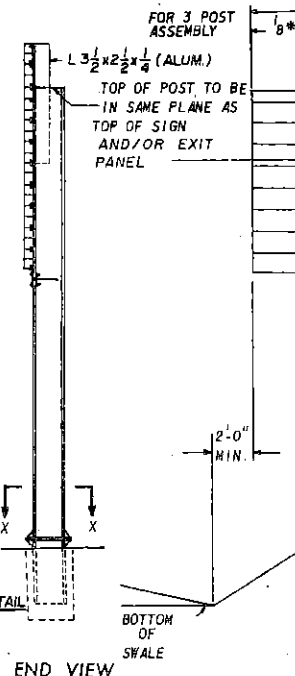
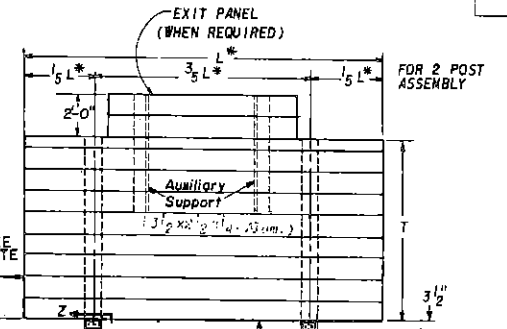
Maximum Dimensions for Post Spacing	
2 Post Sign	1/5 L 3'-0"
	3/5 L 9'-0"
	L 15'-0"
3 Post Sign	1/8 L 3'-9"
	3/8 L 11'-3"
	L 30'-0"



NOTE: TOP OF POST TO BE IN SAME PLANE AS TOP OF SIGN.



NOTE A
7'-0" MIN. (MOUNTED AS SHOWN)
8'-0" MIN. (MOUNTED AS SHOWN ON STD. DWG. 7702 F)

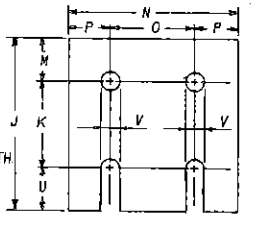
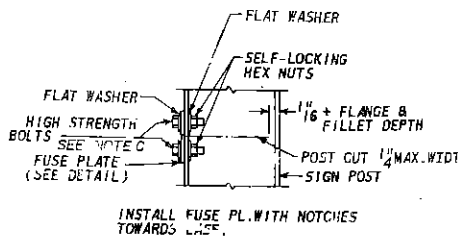


NOTE B
1. LATERAL PLACEMENT SHALL BE DETERMINED IN THE FIELD BY THE ENGINEER PRIOR TO INSTALLATION.
2. FOR LOCATIONS WHERE THERE IS AN UNMOUNTABLE CURB, THE HORIZONTAL CLEARANCE TO EDGE OF SIGN SHALL BE AT LEAST 2'-0" BEYOND THE FACE OF THE CURB.
3. LOCATION OF SIGN SHALL BE SUCH AS TO AVOID PLACING SUPPORTS IN DRAINAGE DITCHES.

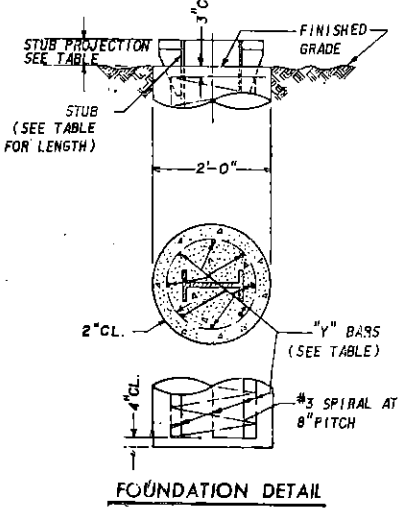
NOTE C
FUSE BOLTS SHALL BE TIGHTENED IN THE SHOP FOLLOWING A METHOD APPROVED BY THE ENGR. TIGHTENING SHALL BE TO SUCH A DEGREE AS TO OBTAIN THE FOLLOWING:

BOLT SIZE	RESIDUAL TENSION
5/8"	19,200 LB.
3/4"	28,400 LB.
7/8"	36,080 LB.
1"	47,250 LB.
1 1/8"	56,450 LB.

FOR 3/4", 1" AND 1 1/8" BOLTS PROVIDE CLIPPED WASHER ON INSIDE FLANGE.



ASSEMBLY INSTRUCTIONS
1. ASSEMBLE POST TO STUB WITH BOLTS AND WITH ONE FLAT WASHER ON EACH BOLT BETWEEN PLATES.
2. SHIM AS REQUIRED TO PLUMB POST.
3. TIGHTEN BOLTS IN A SYSTEMATIC ORDER TO THE PRESCRIBED TORQUE. (SEE TABLE)
4. LOOSEN EACH BOLT AND RETIGHTEN TO PRESCRIBED TORQUE IN THE SAME ORDER AS INITIAL TIGHTENING.
5. BURR THREADS AT JUNCTION WITH NUT USING A CENTER PUNCH TO PREVENT NUT LOOSENING.

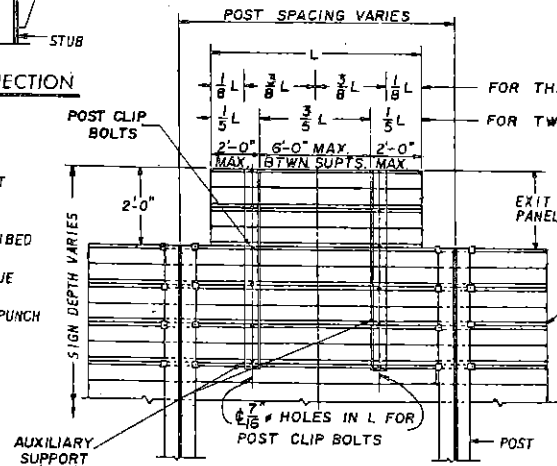
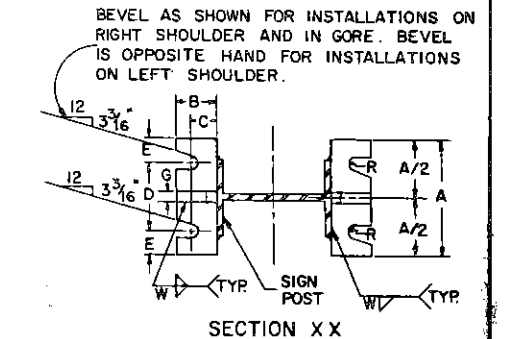
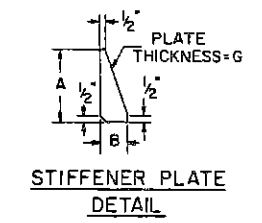


NOTE: IF SOLID ROCK IS ENCOUNTERED 2' OR LESS ABOVE THE BOTTOM OF THE FOOTING EXTEND THE FOOTING INTO THE ROCK TO THE TABULATED FOOTING DEPTH. IF SOLID ROCK IS ENCOUNTERED MORE THAN 2' ABOVE THE BOTTOM OF THE FOOTING EXTEND THE FOOTING INTO THE ROCK 2' MINIMUM OR AS REQUIRED TO PROVIDE THE TABULATED STUB PROJECTION.

POST SIZE	FOUNDATION DATA				BASE CONNECTION DATA													FUSE PLATE DATA												
	FTG. DEPTH	STUB LENGTH	STUB PROJ.	BARS "Y"	BOLT DIAM. & TORQUE	A	B	C	D	E	F	G	W	R	BOLT DIAM.	J	K	M	N	O	P	U	S	V						
W6x8.5	3'-0"	2'-0"	3"	8#6	5/8" - 450 LB	5"	2"	1 1/4"	2 3/4"	1 1/8"	3 1/4"	1 1/2"	1 1/4"	1 1/2"	5/8"	4 1/2"	2 1/2"	1 1/2"	4 1/4"	2 1/4"	1 1/2"	3 1/4"	1 1/2"	1 1/2"	1 1/2"					
W6x12	3'-0"	2'-0"	3"	8#6	5/8" - 450 LB	5"	2"	1 1/4"	2 3/4"	1 1/8"	3 1/4"	1 1/2"	1 1/4"	1 1/2"	5/8"	4 1/2"	2 1/2"	1 1/2"	4 1/4"	2 1/4"	1 1/2"	3 1/4"	1 1/2"	1 1/2"	1 1/2"					
W6x15.5	3'-6"	2'-6"	3"	8#6	5/8" - 450 LB	5"	2"	1 1/4"	2 3/4"	1 1/8"	3 1/4"	1 1/2"	1 1/4"	1 1/2"	5/8"	4 1/2"	2 1/2"	1 1/2"	4 1/4"	2 1/4"	1 1/2"	3 1/4"	1 1/2"	1 1/2"	1 1/2"					
W8x17	5'-0"	2'-6"	3"	8#7	5/8" - 450 LB	5"	2"	1 1/4"	2 3/4"	1 1/8"	3 1/4"	1 1/2"	1 1/4"	1 1/2"	5/8"	4 1/2"	2 1/2"	1 1/2"	4 1/4"	2 1/4"	1 1/2"	3 1/4"	1 1/2"	1 1/2"	1 1/2"					
W8x20	5'-6"	3'-0"	2 1/2"	8#8	3/4" - 750 LB	6"	2 1/4"	1 3/8"	3 1/2"	1 1/4"	1"	3 1/4"	5 1/8"	1 1/2"	6 1/2"	3 3/4"	1 3/4"	6 1/4"	2 3/4"	1 3/4"	1 1/2"	3 1/4"	1 1/2"	1 1/2"	1 1/2"					
W10x21	6'-0"	3'-0"	2 1/2"	8#9	3/4" - 750 LB	6"	2 1/4"	1 3/8"	3 1/2"	1 1/4"	1"	3 1/4"	5 1/8"	1 1/2"	6 1/2"	3 3/4"	1 3/4"	6 1/4"	2 3/4"	1 3/4"	1 1/2"	3 1/4"	1 1/2"	1 1/2"	1 1/2"					
W10x25	7'-0"	3'-0"	2 1/2"	8#10	3/4" - 750 LB	6"	2 1/4"	1 3/8"	3 1/2"	1 1/4"	1"	3 1/4"	5 1/8"	1 1/2"	6 1/2"	3 3/4"	1 3/4"	6 1/4"	2 3/4"	1 3/4"	1 1/2"	3 1/4"	1 1/2"	1 1/2"	1 1/2"					
W12x27	7'-6"	3'-0"	2 1/2"	8#11	3/4" - 750 LB	6"	2 1/4"	1 3/8"	3 1/2"	1 1/4"	1"	3 1/4"	5 1/8"	1 1/2"	6 1/2"	3 3/4"	1 3/4"	6 1/4"	2 3/4"	1 3/4"	1 1/2"	3 1/4"	1 1/2"	1 1/2"	1 1/2"					

PART REAR VIEW AT SUPPORT

POST CLIP, BOLT, LOCK NUT AND WASHER



SHIM DETAIL
FURNISH 2-012" THICK AND 2-032" THICK SHIMS PER POST. SHIMS SHALL BE FABRICATED FROM BRASS SHIM STOCK OR STRIP CONFORMING TO A.S.T.M.-B36.

GENERAL NOTES
• For details of Extruded Aluminum Channel sign see Traffic Construction Standard 7705.
• See sheet 5 of 5 of 7702A for beam section required for post.

NOTE: AUXILIARY SUPPORTS SHALL BE OMITTED AND THE POSTS EXTENDED TO THE TOP OF EXIT PANEL WHEN PANEL IS OF SUFFICIENT LENGTH TO BE CLIP FASTENED DIRECTLY TO BOTH SIDES OF EACH POST.

Commonwealth of Pennsylvania
DEPARTMENT OF TRANSPORTATION
BUREAU OF TRAFFIC ENGINEERING

**POST MOUNTED SIGNS, TYPE A
BREAK-AWAY
(EXTRUDED ALUMINUM CHANNEL SIGN)**

Recommended _____ Approved _____ Sht. 4 of 5
Director, Bureau of Traffic Engineering Deputy Chief Highway Engineer TC 7702 A

REVISIONS	5-14-73
	5-25-71
	11-13-70

2 POST SIGNS															
L	H	T													
		2	3	4	5	6	7	8	9	10	11	12	13	14	15
6'-0"	8'-0"	S4x7.7	S4x7.7	S4x7.7	S4x7.7	S4x7.7	S4x7.7	W6x8.5	W6x8.5	W6x8.5	W6x12	W6x12	W6x12	W6x15.5	W6x15.5
	10'-0"	S4x7.7	S4x7.7	S4x7.7	S4x7.7	S4x7.7	S4x7.7	W6x8.5	W6x8.5	W6x8.5	W6x12	W6x12	W6x12	W6x15.5	W6x15.5
	12'-0"	S4x7.7	S4x7.7	S4x7.7	S4x7.7	S4x7.7	S4x7.7	W6x8.5	W6x8.5	W6x8.5	W6x12	W6x12	W6x12	W6x15.5	W6x15.5
8'-0"	8'-0"	S4x7.7	S4x7.7	S4x7.7	S4x7.7	W6x8.5	W6x8.5	W6x8.5	W6x12	W6x12	W6x12	W6x15.5	W6x15.5	W6x15.5	W8x17
	10'-0"	S4x7.7	S4x7.7	S4x7.7	S4x7.7	W6x8.5	W6x8.5	W6x8.5	W6x12	W6x12	W6x12	W6x15.5	W6x15.5	W6x15.5	W8x17
	12'-0"	S4x7.7	S4x7.7	S4x7.7	S4x7.7	W6x8.5	W6x8.5	W6x8.5	W6x12	W6x12	W6x12	W6x15.5	W6x15.5	W6x15.5	W8x17
10'-0"	8'-0"	S4x7.7	S4x7.7	W6x8.5	W6x8.5	W6x12	W6x12	W6x12	W6x15.5	W6x15.5	W6x15.5	W8x17	W8x17	W8x17	W8x17
	10'-0"	S4x7.7	S4x7.7	W6x8.5	W6x8.5	W6x12	W6x12	W6x12	W6x15.5	W6x15.5	W6x15.5	W8x17	W8x17	W8x17	W8x17
	12'-0"	S4x7.7	S4x7.7	W6x8.5	W6x8.5	W6x12	W6x12	W6x12	W6x15.5	W6x15.5	W6x15.5	W8x17	W8x17	W8x17	W8x17
12'-0"	8'-0"	S4x7.7	W6x8.5	W6x8.5	W6x12	W6x12	W6x15.5	W6x15.5	W8x17	W8x17	W8x17	W8x17	W8x17	W8x17	W8x17
	10'-0"	S4x7.7	W6x8.5	W6x8.5	W6x12	W6x12	W6x15.5	W6x15.5	W8x17	W8x17	W8x17	W8x17	W8x17	W8x17	W8x17
	12'-0"	S4x7.7	W6x8.5	W6x8.5	W6x12	W6x12	W6x15.5	W6x15.5	W8x17	W8x17	W8x17	W8x17	W8x17	W8x17	W8x17
14'-0"	8'-0"	W6x8.5	W6x12	W6x12	W6x15.5	W6x15.5	W8x17	W8x17	W8x17	W8x17	W8x20	W8x20	W8x20	W8x20	W8x20
	10'-0"	W6x8.5	W6x12	W6x12	W6x15.5	W6x15.5	W8x17	W8x17	W8x17	W8x17	W8x20	W8x20	W8x20	W8x20	W8x20
	12'-0"	W6x8.5	W6x12	W6x12	W6x15.5	W6x15.5	W8x17	W8x17	W8x17	W8x17	W8x20	W8x20	W8x20	W8x20	W8x20
16'-0"	8'-0"	W6x8.5	W6x12	W6x12	W6x15.5	W6x15.5	W8x17	W8x17	W8x17	W8x17	W8x20	W8x20	W8x20	W8x20	W8x20
	10'-0"	W6x8.5	W6x12	W6x12	W6x15.5	W6x15.5	W8x17	W8x17	W8x17	W8x17	W8x20	W8x20	W8x20	W8x20	W8x20
	12'-0"	W6x8.5	W6x12	W6x12	W6x15.5	W6x15.5	W8x17	W8x17	W8x17	W8x17	W8x20	W8x20	W8x20	W8x20	W8x20
18'-0"	8'-0"	W6x8.5	W6x12	W6x12	W6x15.5	W6x15.5	W8x17	W8x17	W8x17	W8x17	W8x20	W8x20	W8x20	W8x20	W8x20
	10'-0"	W6x8.5	W6x12	W6x12	W6x15.5	W6x15.5	W8x17	W8x17	W8x17	W8x17	W8x20	W8x20	W8x20	W8x20	W8x20
	12'-0"	W6x8.5	W6x12	W6x12	W6x15.5	W6x15.5	W8x17	W8x17	W8x17	W8x17	W8x20	W8x20	W8x20	W8x20	W8x20
20'-0"	8'-0"	W6x8.5	W6x12	W6x12	W6x15.5	W6x15.5	W8x17	W8x17	W8x17	W8x17	W8x20	W8x20	W8x20	W8x20	W8x20
	10'-0"	W6x8.5	W6x12	W6x12	W6x15.5	W6x15.5	W8x17	W8x17	W8x17	W8x17	W8x20	W8x20	W8x20	W8x20	W8x20
	12'-0"	W6x8.5	W6x12	W6x12	W6x15.5	W6x15.5	W8x17	W8x17	W8x17	W8x17	W8x20	W8x20	W8x20	W8x20	W8x20

3 POST SIGNS															
L	H	T													
		2	3	4	5	6	7	8	9	10	11	12	13	14	15
22'-0"	8'-0"	S4x7.7	W6x8.5	W6x12	W6x12	W6x15.5	W6x15.5	W8x17	W8x17	W8x17	W8x17	W8x17	W8x20	W8x20	W8x20
	10'-0"	W6x8.5	W6x12	W6x12	W6x15.5	W6x15.5	W8x17	W8x17	W8x17	W8x17	W8x17	W8x20	W8x20	W8x20	W8x20
	12'-0"	W6x8.5	W6x12	W6x12	W6x15.5	W6x15.5	W8x17	W8x17	W8x17	W8x17	W8x17	W8x20	W8x20	W8x20	W8x20
24'-0"	8'-0"	W6x8.5	W6x12	W6x12	W6x15.5	W6x15.5	W8x17	W8x17	W8x17	W8x17	W8x17	W8x20	W8x20	W8x20	W8x20
	10'-0"	W6x8.5	W6x12	W6x12	W6x15.5	W6x15.5	W8x17	W8x17	W8x17	W8x17	W8x17	W8x20	W8x20	W8x20	W8x20
	12'-0"	W6x8.5	W6x12	W6x12	W6x15.5	W6x15.5	W8x17	W8x17	W8x17	W8x17	W8x17	W8x20	W8x20	W8x20	W8x20
26'-0"	8'-0"	W6x8.5	W6x12	W6x12	W6x15.5	W6x15.5	W8x17	W8x17	W8x17	W8x17	W8x17	W8x20	W8x20	W8x20	W8x20
	10'-0"	W6x8.5	W6x12	W6x12	W6x15.5	W6x15.5	W8x17	W8x17	W8x17	W8x17	W8x17	W8x20	W8x20	W8x20	W8x20
	12'-0"	W6x8.5	W6x12	W6x12	W6x15.5	W6x15.5	W8x17	W8x17	W8x17	W8x17	W8x17	W8x20	W8x20	W8x20	W8x20
28'-0"	8'-0"	W6x8.5	W6x12	W6x12	W6x15.5	W6x15.5	W8x17	W8x17	W8x17	W8x17	W8x17	W8x20	W8x20	W8x20	W8x20
	10'-0"	W6x8.5	W6x12	W6x12	W6x15.5	W6x15.5	W8x17	W8x17	W8x17	W8x17	W8x17	W8x20	W8x20	W8x20	W8x20
	12'-0"	W6x8.5	W6x12	W6x12	W6x15.5	W6x15.5	W8x17	W8x17	W8x17	W8x17	W8x17	W8x20	W8x20	W8x20	W8x20
30'-0"	8'-0"	W6x8.5	W6x12	W6x12	W6x15.5	W6x15.5	W8x17	W8x17	W8x17	W8x17	W8x17	W8x20	W8x20	W8x20	W8x20
	10'-0"	W6x8.5	W6x12	W6x12	W6x15.5	W6x15.5	W8x17	W8x17	W8x17	W8x17	W8x17	W8x20	W8x20	W8x20	W8x20
	12'-0"	W6x8.5	W6x12	W6x12	W6x15.5	W6x15.5	W8x17	W8x17	W8x17	W8x17	W8x17	W8x20	W8x20	W8x20	W8x20

DISTRICT	COUNTY	ROUTE	SECTION	HEET
REVISION NUMBER	REVISIONS			DATE

NOTES

Signs shall be provided for sign locations specified on the plans or as directed by the engineer.

Dimensions, elevations, slopes, and situations shown are for illustrative purposes only and actual cases will depend on field conditions.

When two independent signs are mounted as a single installation, the post supports shall be calculated with the total area of the two signs being considered as the area of one sign, included allowance for a vertical space of six inches between the two signs, other mounting details shall be as depicted for one sign.

Steel for posts weighing 15.5 lbs. per ft. or less shall conform to ASTM A36.

Steel for posts weighting 17 lbs. per ft. or more shall conform to ASTM A441.

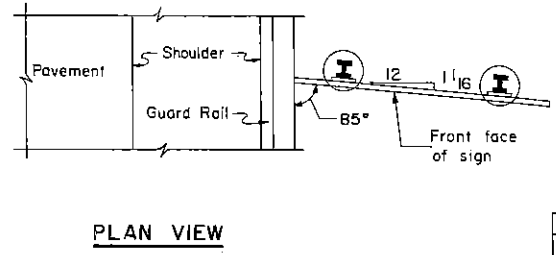
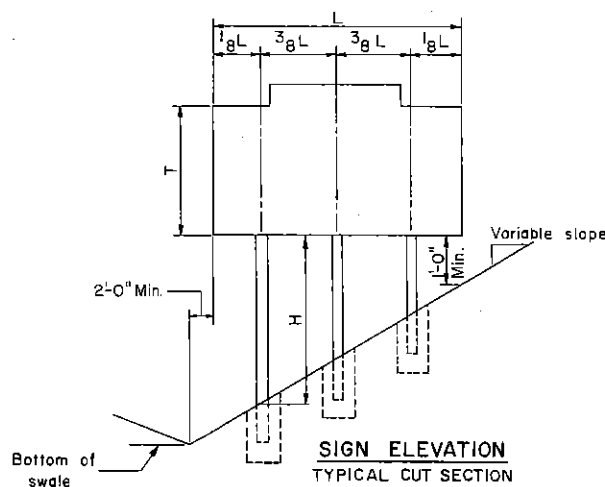
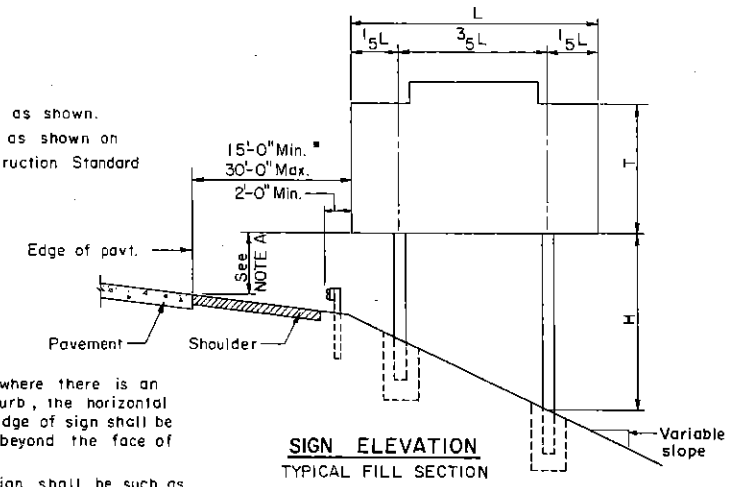
PROCEDURE

- Enter table with sign size ("T and L") and maximum value of "H" for installation considered. Select beam section with this section enter table, "Foundation Data" (sheets 1 thru 4) for depth of imbedment.
- For sign sizes between those given in the table use the next highest foot.
- Example: L=11'-6", T=5'-6". Use L=12'-0", T=6'-0".
- Dimension "H" is always the maximum dimension between ground line and bottom of sign.
- Minimum post for breakaway is W6x8.5.

For post spacing of three post sign assembly see typical cut section.

NOTE A

7'-0" mounted as shown.
8'-6" mounted as shown on Traffic Construction Standard 7702F.



For locations where there is an unmountable curb, the horizontal clearance to edge of sign shall be at least 2'-0" beyond the face of curb.

Location of sign shall be such as to avoid placing supports in drainage ditches.

Commonwealth of Pennsylvania
DEPARTMENT OF TRANSPORTATION
BUREAU OF TRAFFIC ENGINEERING

BEAM SECTIONS FOR POST MOUNTED SIGNS, TYPE A

Recommended _____	Approved _____	Sh. 5 of 5
Director, Bureau of Traffic Engineering	Deputy Chief Highway Engineer	TC-7702A

R1 5-18-73
REVISIONS

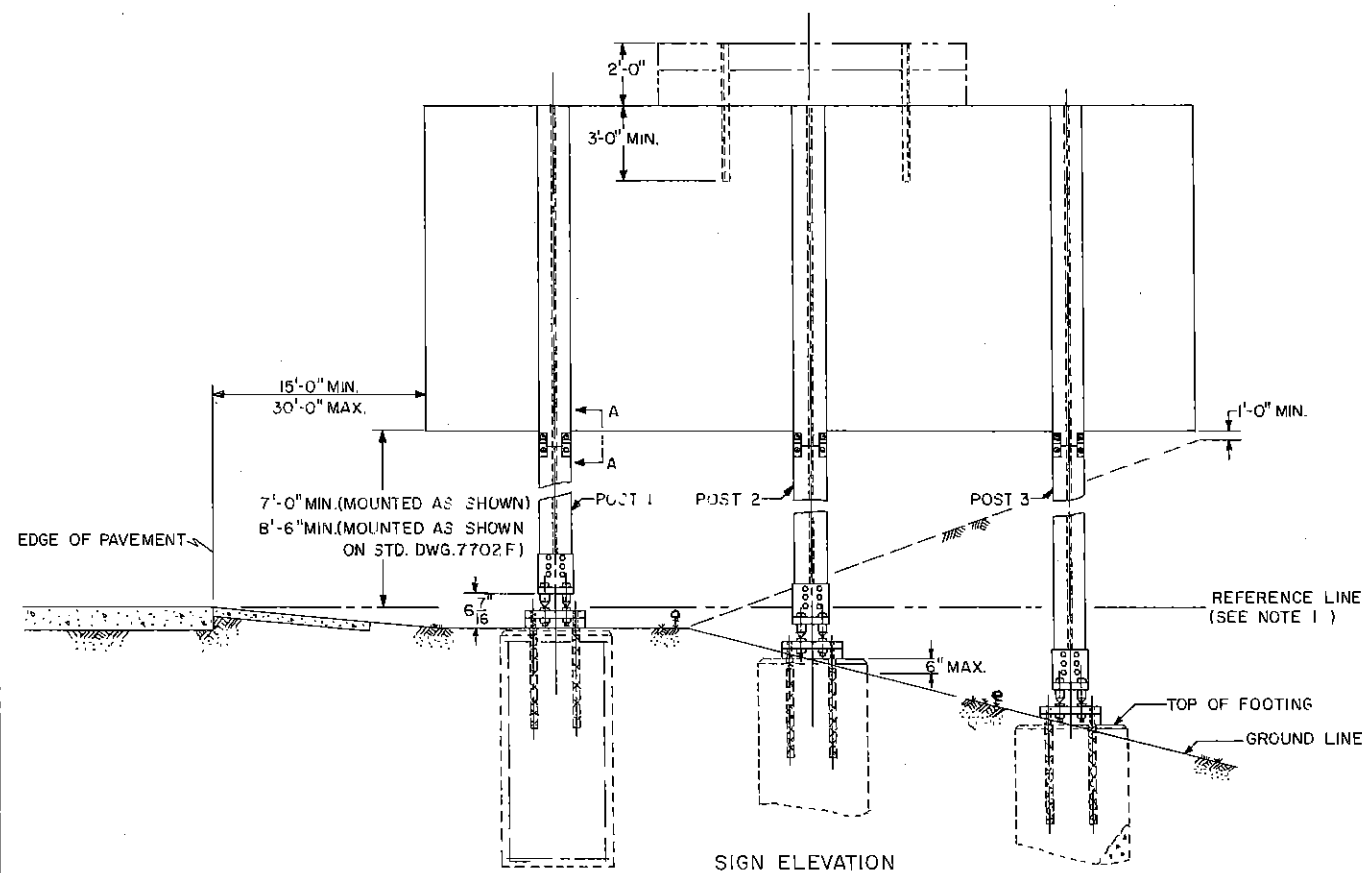
DESIGN CRITERIA

THE DESIGN IS BASED ON 80 M.P.H. WIND USING 1975 A.A.S.H.T.O. STANDARD SPECIFICATIONS FOR STRUCTURAL SUPPORTS FOR HIGHWAY SIGNS, LUMINAIRES AND TRAFFIC SIGNALS.

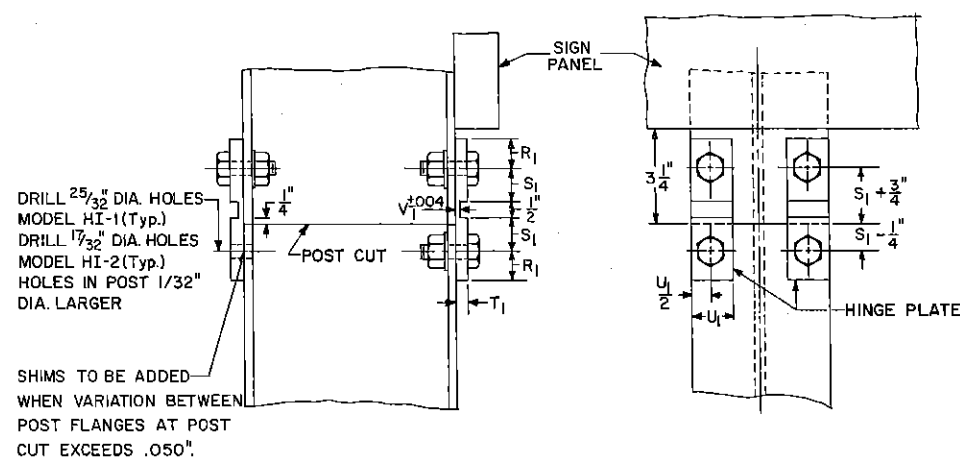
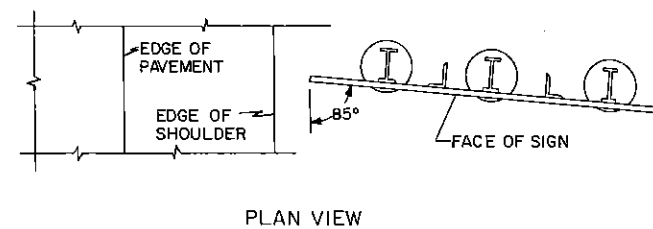
1. FOR SELECTION OF POST SIZE AND WEIGHT REFER TO "POST SELECTION TABLE FOR BREAKAWAY SIGNS" ON SHEET ENTITLED "POST SECTION SELECTION TABLES", SHEET 4 OF 4.
2. FOR SELECTION OF FOOTING SIZE AND ITS REINFORCEMENT REFER TO "FOOTING SELECTION TABLE FOR BREAKAWAY SIGNS" ON SHEET ENTITLED "POST BASE DETAILS", SHEET 2 OF 4.

NOTES:

1. IF TOP OF FOOTING IS ABOVE REFERENCE LINE IT IS INDICATED BY A (+) VALUE, IF BELOW BY A (-) VALUE.
2. LATERAL PLACEMENT SHALL BE DETERMINED IN THE FIELD, BY THE ENGINEER PRIOR TO INSTALLATION.
3. FOR LOCATIONS WHERE THERE IS AN UNMOUNTABLE CURB, THE HORIZONTAL CLEARANCE TO EDGE OF SIGN SHALL BE AT LEAST 2'-0" BEYOND THE FACE OF THE CURB.
4. LOCATION OF SIGN SHALL BE SUCH AS TO AVOID PLACING SUPPORTS IN DRAINAGE DITCHES.



DIMENSIONS, ELEVATIONS, SLOPES & SITUATIONS SHOWN ARE FOR ILLUSTRATIVE PURPOSES ONLY AND ACTUAL CASES WOULD DEPEND ON FIELD CONDITIONS.

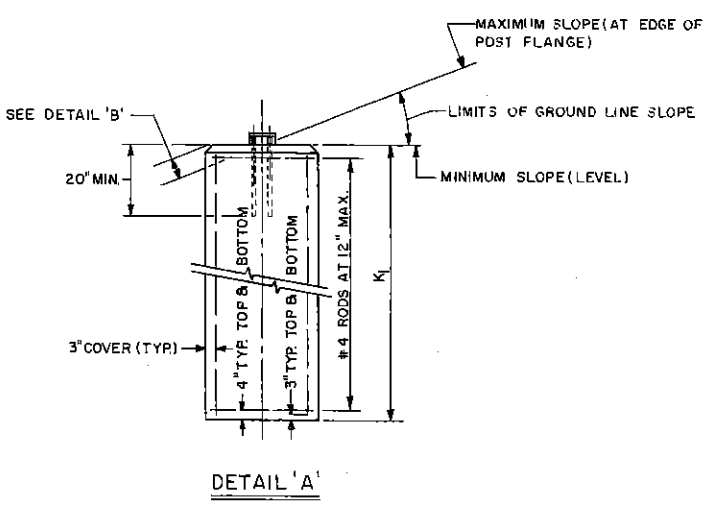
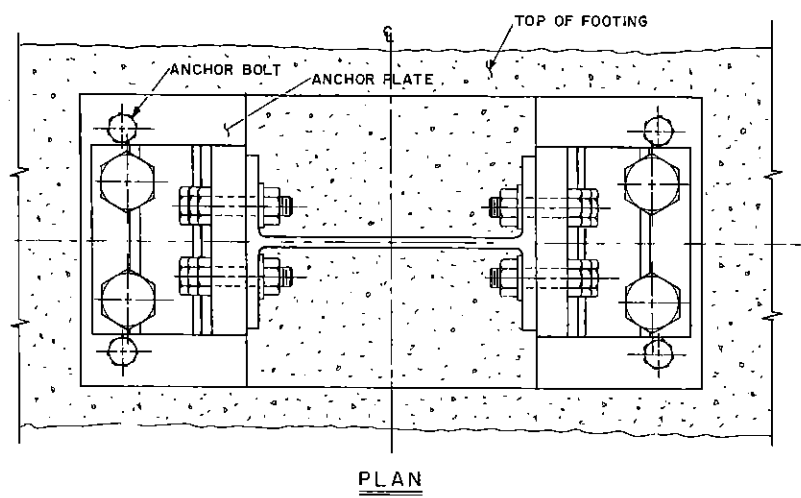
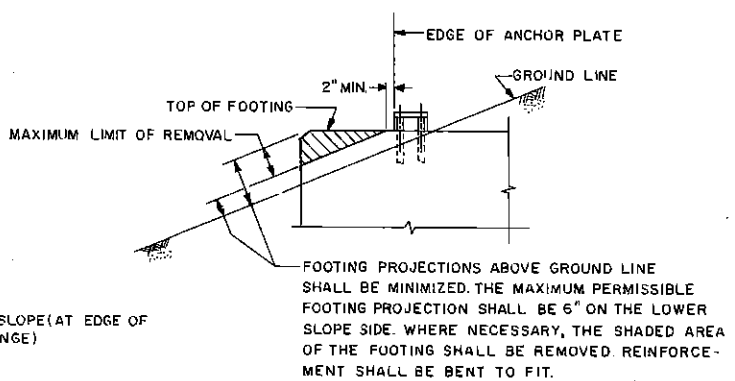
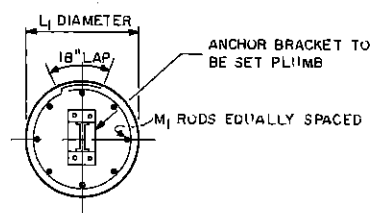


HINGE PLATE DATA						
POST SIZE	MODEL NO.	ALL DIMENSIONS IN INCHES				
		R ₁	S ₁	T ₁	U ₁	V ₁
4S7.7	HI-2	3/4	7/8	1/4	1	.071
6WB.5						
8W12.8						
6W15.5						
8W17						
8W20	HI-1	1	1 1/8	3/8	1 1/2	.113
10W21						
10W25						
12W27						
14W30						

Commonwealth of Pennsylvania
DEPARTMENT OF TRANSPORTATION
BUREAU OF TRAFFIC ENGINEERING

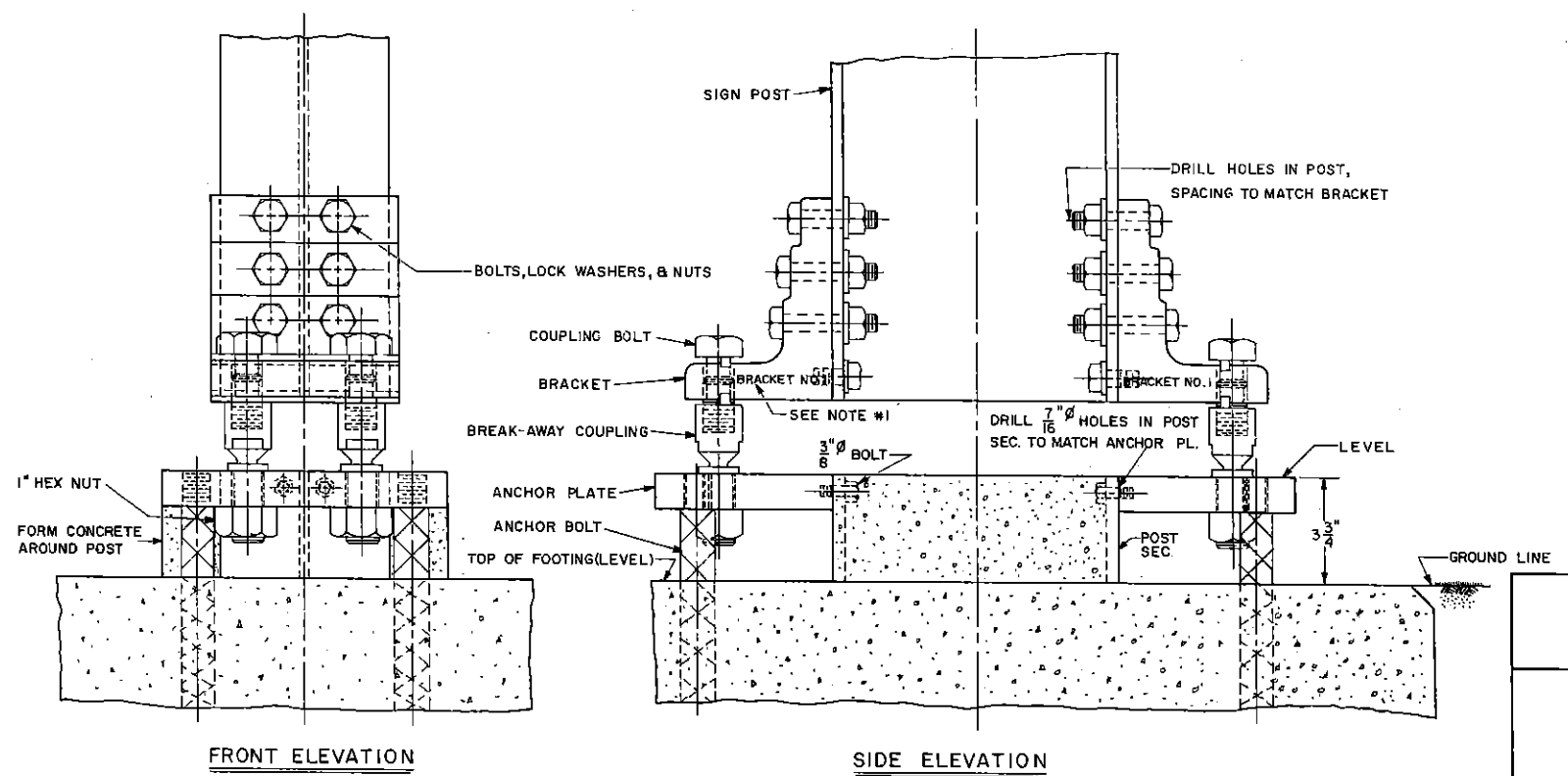
**POST MOUNTED SIGNS - TYPE I
ERECTION DETAILS**

Recommended <u>7/23/76</u> <i>G.D. Donahy</i> Director, Bureau of Traffic Engineering	Approved <u>7/26/76</u> <i>Robert P. Mose</i> Deputy Chief Highway Engineer	Sht. <u>1</u> of <u>4</u> TC7702A
--	--	---



POST SIZE	DIAMETER L_1 FEET	DEPTH K_1 FEET	REINF. STEEL M_1
4S	1.5	5.00	8-#5
6W	2.0	5.50	8-#5
8W	2.5	6.00	8-#5
10W	3.0	6.75	8-#5
12W	3.0	7.50	8-#5
14W	3.0	8.00	8-#5

FOOTING DETAILS



BREAK-AWAY ASSEMBLY

NOTES

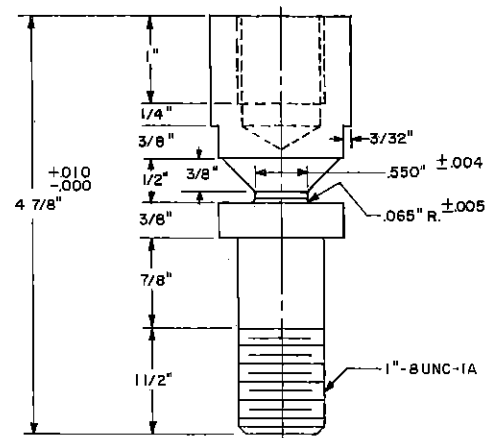
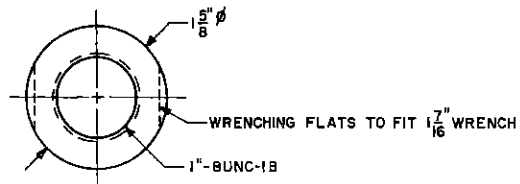
1. THE PROPER BRACKET NUMBER (STAMPED ON THE BRACKET) MUST BE USED FOR EACH POST AS INDICATED.
2. BREAK-AWAY COUPLINGS SHALL BE BOLTED TO UPPER PORTION OF SIGN POST BEFORE PLACING AND CONNECTING POST TO FOOTING.
3. FOOTING SELECTION TABLE
 - a. THE EMBEDMENT OF FOOTINGS IS BASED ON FIGURE I.8.2.c(4) OF THE AASHTO SPECIFICATIONS. THE SOIL IS ASSUMED CAPABLE OF DEVELOPING A SOIL PRESSURE OF 2,000 PSF IN UNDISTURBED OR ADEQUATELY COMPACTED CONDITION.
 - b. ENTER TABLE WITH REQUIRED POST SIZE AND FIND REQUIRED FOOTING VALUES AS SHOWN IN DETAIL 'A'.

Commonwealth of Pennsylvania
DEPARTMENT OF TRANSPORTATION
BUREAU OF TRAFFIC ENGINEERING

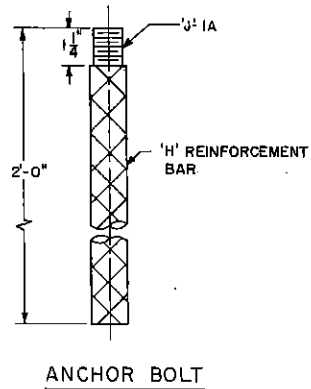
**POST MOUNTED SIGNS - TYPE I
POST BASE DETAILS**

Recommended <i>7/22/76</i>	Approved <i>7/22/76</i>	Sht. 2 of 4
<i>J.R. Donahue</i> Director, Bureau of Traffic Engineering	<i>Paul R. Musser</i> Deputy Chief Highway Engineer	TC 7702A

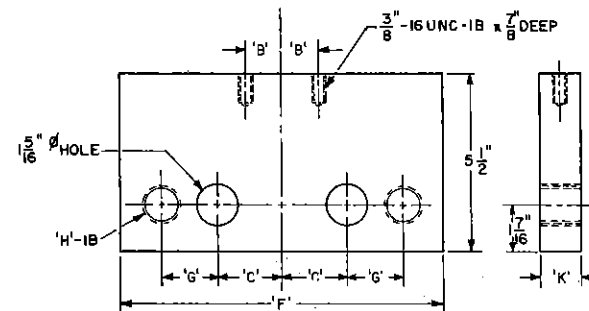
MADE BY *RS Co.*



BREAK-AWAY COUPLING

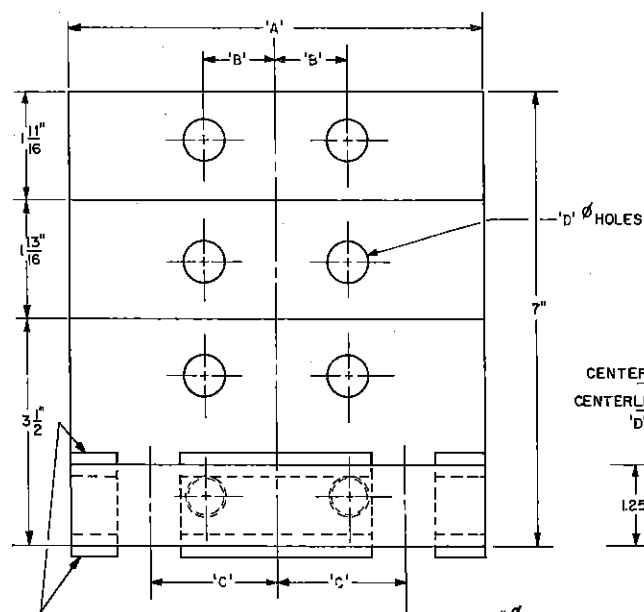


ANCHOR BOLT

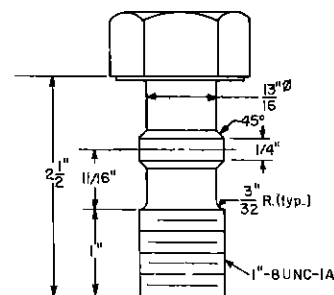
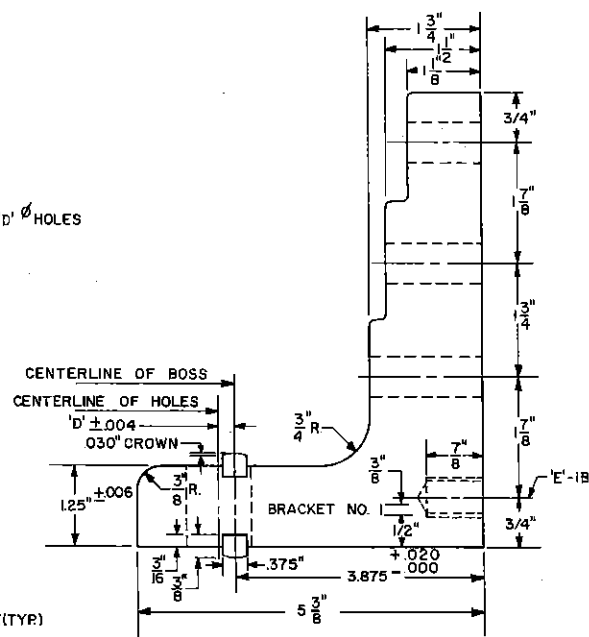


ANCHOR PLATE

NOTE:
ALL MATERIAL & WORKMANSHIP SHALL BE IN ACCORDANCE WITH THE APPROPRIATE SPECIFICATION IN PennDOT FORM 408 AND/OR 409.



BRACKET



COUPLING BOLT

POST SIZE	BRACKET NUMBER SELECTION TABLE							
	BRACKET NUMBER							
	No. 1 D = .100"	No. 2 D = .150"		No. 3 D = .200"		No. 4 D = .250"		
Min. "L"	Max. "L"	Min. "L"	Max. "L"	Min. "L"	Max. "L"	Min. "L"	Max. "L"	
W6 x 8.5	12.19	8.65	12.18	6.69	8.64	---	6.68	
W6 x 12	12.33	8.75	12.32	6.77	8.74	---	6.76	
W6 x 15.5	12.33	8.75	12.32	6.77	8.74	---	6.76	
W8 x 17	14.10	10.02	14.09	7.75	10.01	---	7.74	
W8 x 20	14.22	10.10	14.21	7.82	10.09	---	7.81	
W10 x 21	15.78	11.22	15.77	8.68	11.21	---	8.67	
W10 x 25	15.93	11.33	15.92	8.77	11.32	---	8.76	
W12 x 27	17.58	12.50	17.57	9.68	12.49	---	9.67	
W14 x 30	19.27	13.71	19.26	10.62	13.70	---	10.61	

NOTES FOR SELECTION OF BRACKET NUMBER

1. DETERMINE VALUE OF "L", WHICH IS THE DISTANCE FROM CENTROID OF WIND LOAD TO THE BOTTOM OF THE BRACKET, IN FEET, FOR EACH POST.
2. HAVING DETERMINED THE VALUE OF "L", ENTER BRACKET NUMBER SELECTION TABLE AND FIND PREVIOUSLY SELECTED POST SIZE ON THE LEFT SIDE. THEN MOVE HORIZONTALLY TO THE RIGHT UNTIL ENCOUNTERING THE "L" RANGE OF THE DETERMINED "L". NEXT MOVE VERTICALLY TO THE TOP OF THE COLUMN AND READ THE BRACKET NUMBER.

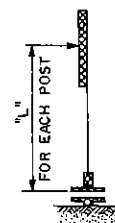
EXAMPLE:

ASSUME SIGN WITH A VALUE OF "L" = 12.4 FEET AND A POST SIZE OF W8x20, FROM THE TABLE FIND A BRACKET No. 2 IS REQUIRED.

POST SIZE	BASE TYPE	DIMENSIONS									
		A	B	C	D	E	F	G	H	J	K
W6, W8	A	5	1 1/8	1 1/2	17/32	1/2-13 UNC	B	1 5/8	#7	7/8-9 UNC	I
W10, W12, W14	B	6 1/2	1 1/8	2	2 1/32	5/8-11 UNC	10	1 3/4	#8	1-8 UNC	1 1/4

STAINLESS STEEL BOSSES TO BE PRESS FIT INTO BRACKET

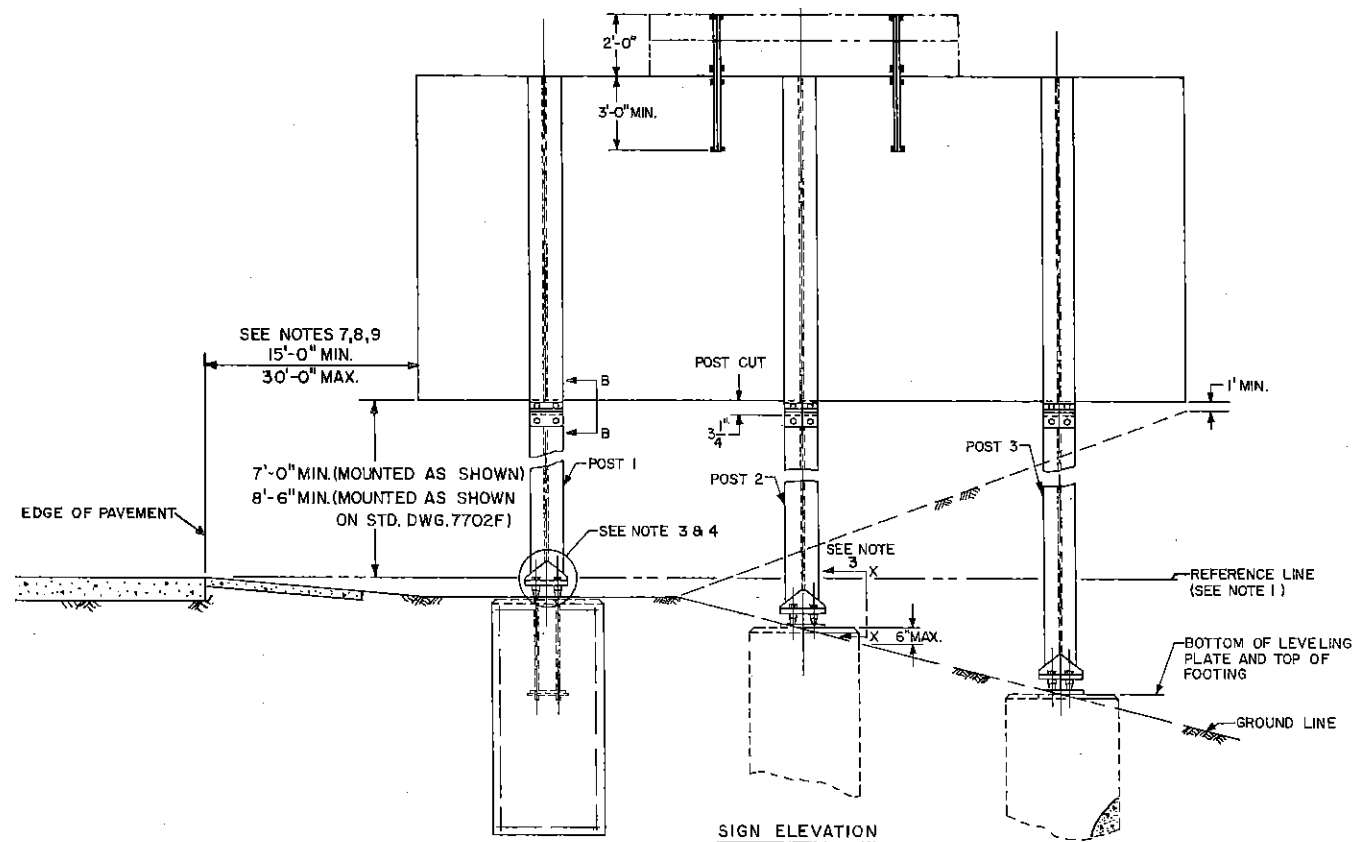
DRILL 1" HOLE(TYP)



Commonwealth of Pennsylvania
DEPARTMENT OF TRANSPORTATION
BUREAU OF TRAFFIC ENGINEERING

POST MOUNTED SIGNS-TYPE I
BREAKAWAY COUPLING DETAILS

Recommended: 7/23/76
Approved: 7/24/76
Director, Bureau of Traffic Engineering
Deputy Chief Highway Engineer
Sht. 3 of 4
TC7702A



DIMENSIONS, ELEVATIONS, SLOPES & SITUATIONS SHOWN ARE FOR ILLUSTRATIVE PURPOSES ONLY AND ACTUAL CASES WOULD DEPEND ON FIELD CONDITIONS.

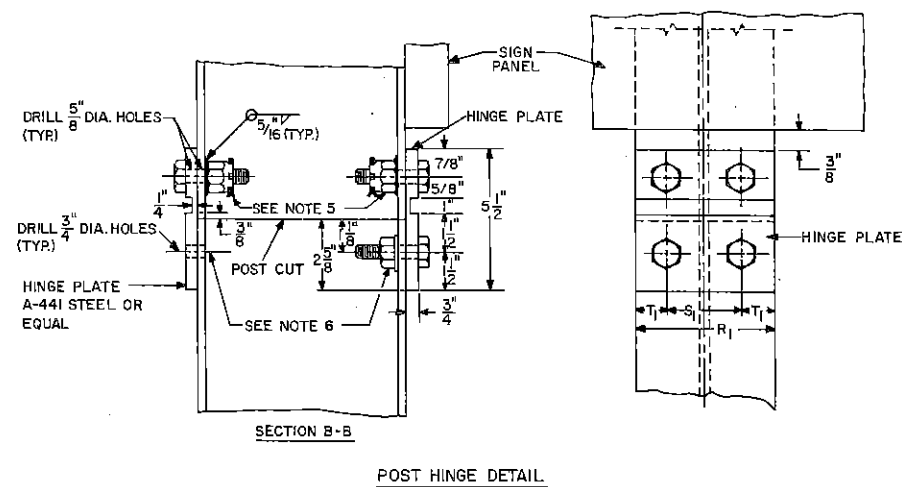
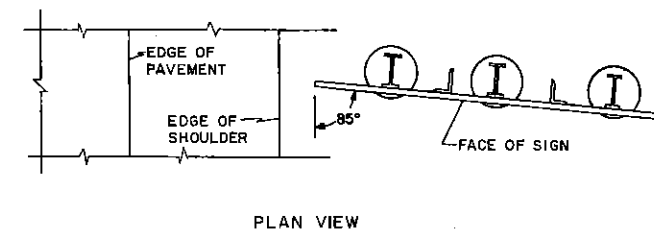
DESIGN CRITERIA

THE DESIGN IS BASED ON 80 M.P.H. WIND USING 1975 A.A.S.H.O. SPECIFICATIONS FOR THE DESIGN AND CONSTRUCTION OF STRUCTURAL SUPPORTS FOR HIGHWAY SIGNS.

1. FOR SELECTION OF POST SIZE AND WEIGHT REFER TO "POST SELECTION TABLE FOR BREAKAWAY SIGNS" ON SHEET ENTITLED "POST SECTION SELECTION TABLES", SHEET 5 OF 5.
2. FOR SELECTION OF LOAD CONCENTRATING WASHER NUMBER AND BASE TYPE REFER TO "LOAD CONCENTRATING WASHER AND BASE TYPE SELECTION CHART" ON SHEET ENTITLED "WASHER, BASE, FOOTING SELECTION TABLES", SHEET 4 OF 5.
3. FOR SELECTION OF FOOTING SIZE AND ITS REINFORCEMENT REFER TO "FOOTING SELECTION TABLE FOR BREAKAWAY SIGNS" ON SHEET ENTITLED "WASHER, BASE, FOOTING SELECTION TABLES", SHEET 4 OF 5.

NOTES:

1. IF TOP OF FOOTING IS ABOVE REFERENCE LINE IT IS INDICATED BY A (+) VALUE, IF BELOW BY A (-) VALUE.
2. ALL MATERIAL TO BE ASTM A-36 STRUCTURAL STEEL UNLESS NOTED.
3. FOR DETAILS SEE SHEET "POST BASE AND INSTALLATION".
4. FOR COUPLING DETAILS SEE SHEET "BREAKAWAY COUPLING DETAILS".
5. 5/8" DIA. x 2 1/2" LONG, N.F. THREADS, BEARING TYPE BOLTS, AISI 1020 STEEL, MINIMUM TENSION STRENGTH OF 60,000 P.S.I. HAND TIGHTENED ONLY WITH CASTELLATED NUTS AND COTTER PINS.
6. 3/4" DIA. x 2 1/2" LONG, STEEL ASTM A-325, HIGH STRENGTH BOLTS WITH LOCK WASHERS, TIGHTENED SECURELY.
7. LATERAL PLACEMENT SHALL BE DETERMINED IN THE FIELD, BY THE ENGINEER PRIOR TO INSTALLATION.
8. FOR LOCATIONS WHERE THERE IS AN UNMOUNTABLE CURB, THE HORIZONTAL CLEARANCE TO EDGE OF SIGN SHALL BE AT LEAST 2'-0" BEYOND THE FACE OF THE CURB.
9. LOCATION OF SIGN SHALL BE SUCH AS TO AVOID PLACING SUPPORTS IN DRAINAGE DITCHES.

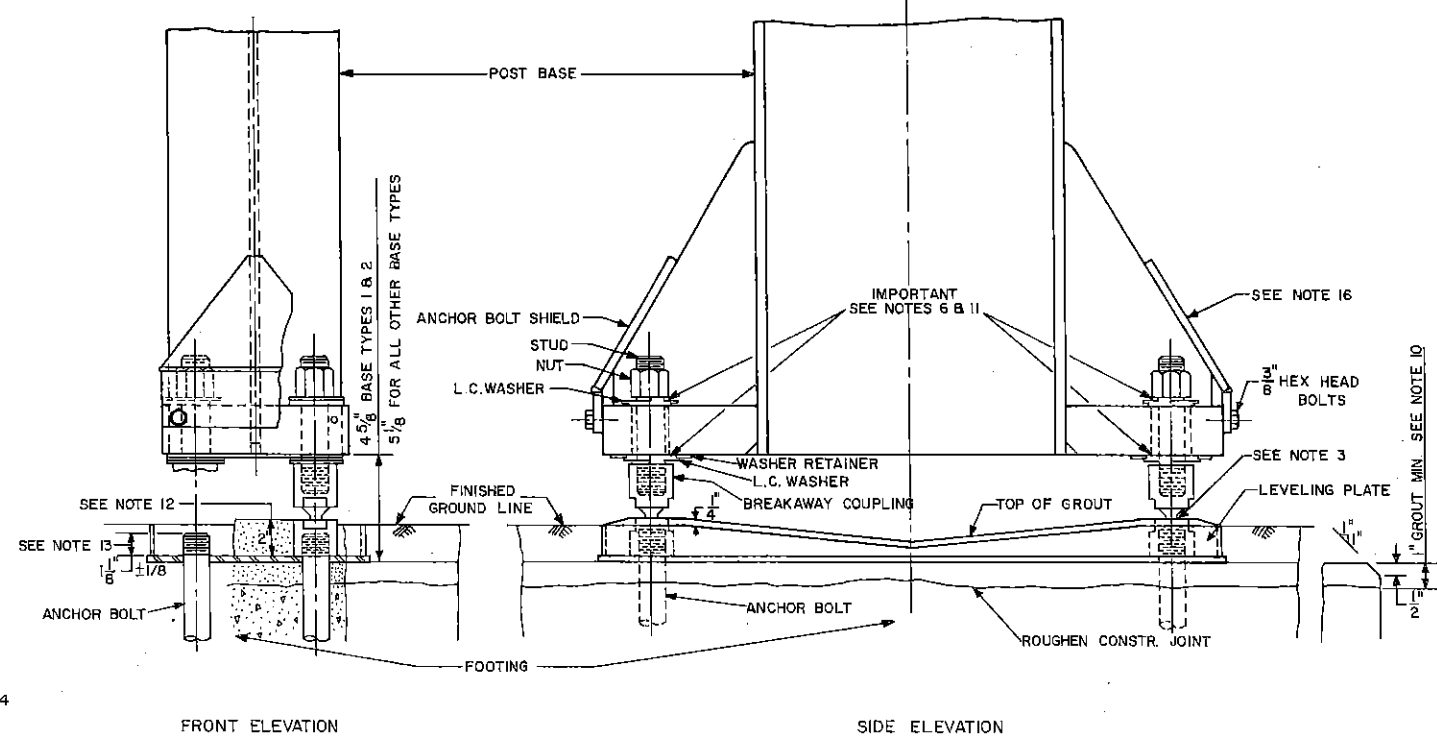
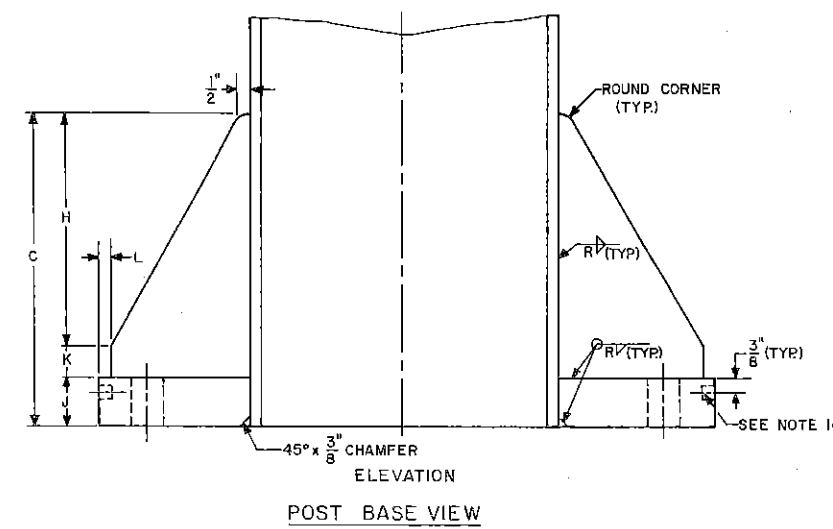
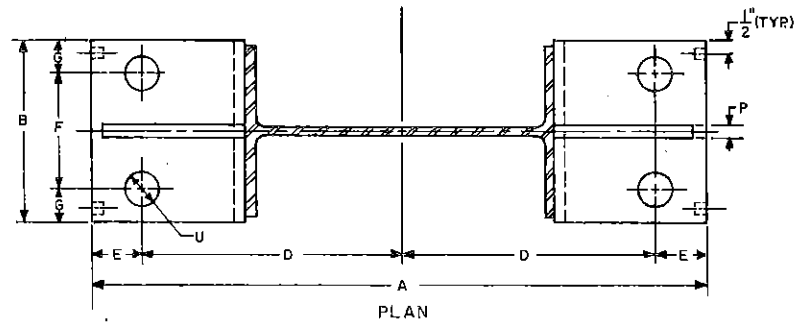


HINGE PLATE DATA			
POST SIZE	R ₁	S ₁	T ₁
6WB5	4	2 1/4	7/8
6W12B	4	2 1/4	7/8
6W15B	6	2 3/4	1 5/8
8W17	5 1/4	2 3/4	1 1/4
8W20	5 1/4	2 3/4	1 1/4
10W21	5 3/4	2 3/4	1 1/2
10W25	5 3/4	2 3/4	1 1/2
12W27	5 3/4	3 1/2	1 1/4
14W30	6 3/4	3 1/2	1 5/8
4S77	3	1 1/2	3/4

Commonwealth of Pennsylvania
DEPARTMENT OF TRANSPORTATION
BUREAU OF TRAFFIC ENGINEERING

POST MOUNTED SIGNS - TYPE II
ERECTION DETAILS

Recommended: *[Signature]* Approved: *[Signature]*
Director Traffic: *[Signature]*

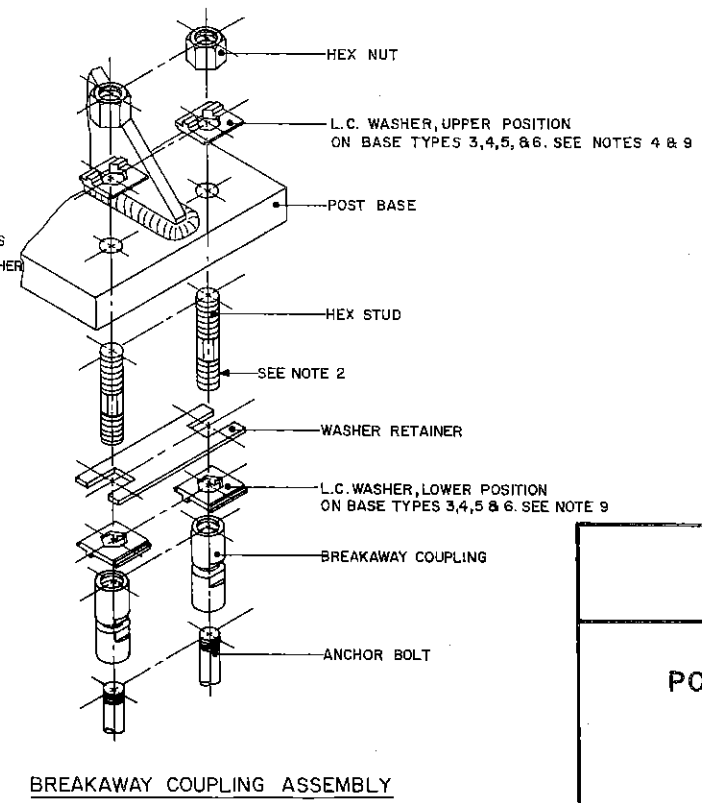
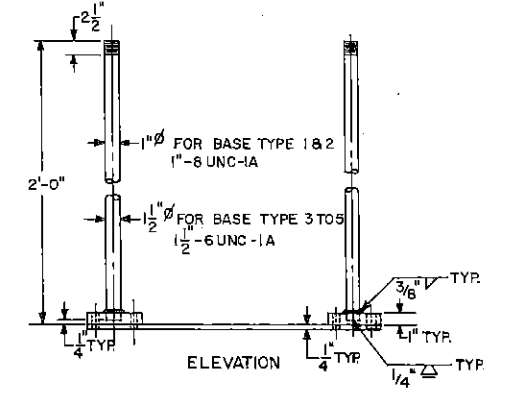
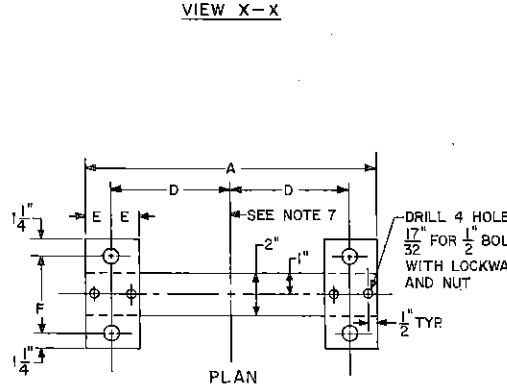
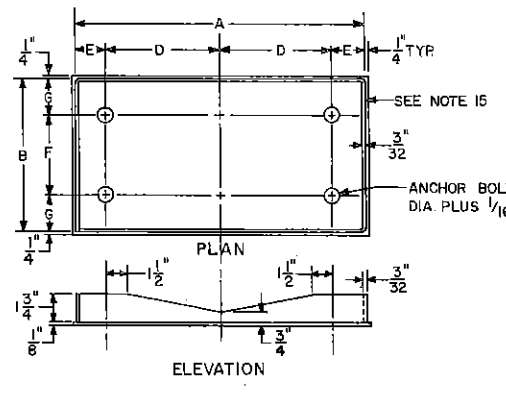
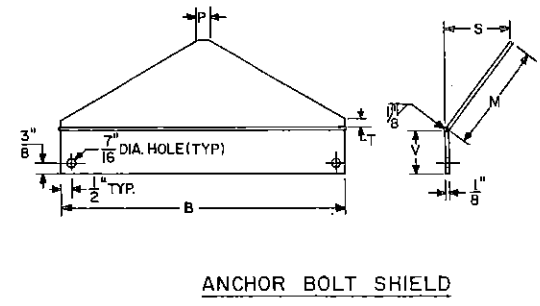


BREAKAWAY COUPLING INSTALLATION
VIEW X-X

- NOTES**
1. ALL WELDS TO CONFORM TO LATEST A.W.S. SPECIFICATIONS.
 2. THE HEX STUD END WITH THE SMALLER THREAD DEPTH ($1\frac{1}{8}$) SHOULD BE SCREWED INTO TOP OF BREAKAWAY COUPLING.
 3. SMALL END OF TAPER ON BREAKAWAY COUPLING SHOULD ALWAYS POINT DOWNWARD.
 4. USE STANDARD FLAT WASHERS UNDER NUTS ON BASE TYPES 1 & 2.
 5. ALL MATERIAL TO BE ASTM A-36 STEEL OR EQUAL, UNLESS NOTED.
 6. THE PROPER WASHER NUMBER (STAMPED ON WASHER) MUST BE USED FOR EACH POST AS INDICATED IN THE TABLE ON SHEET ENTITLED "BREAKAWAY GROUND MOUNTED SIGNS".
 7. THE AXIS OF THE ANCHOR FRAME SHOULD BE PLACED PARALLEL TO THE SIGN PANEL FACE.
 8. POST BASE MATERIAL SHALL BE STEEL ASTM A-36 FOR POSTS UP TO AND INCLUDING 6W15.5, ASTM A-441 FOR LARGER POST SIZES.
 9. NO L.C. WASHERS OR RETAINERS ARE REQ'D. FOR BASE TYPE 1 & 2.
 10. GROUT MAY BE OMITTED IF ANCHOR BOLTS AND LEVELING PLATE CAN BE PROPERLY POSITIONED.
 11. RAISED PORTION OF L.C. WASHERS MUST BE POSITIONED AS INDICATED. CENTER OF RAISED PORTION MUST BE TOWARD ϕ OF POST.
 12. AFTER GROUT UNDER LEVELING PLATE HAS SET, SCREW BREAKAWAY COUPLINGS TO ANCHOR BOLTS AND FILL ENTIRE PLATE WITH GROUT AS SHOWN.
 13. HOLD THIS HEIGHT ON ALL ANCHOR BOLTS, KEEP PLATE LEVEL WHEN GROUTING.
 14. DRILL AND TAP 4 HOLES $\frac{3}{8}$ " 16UNC-2 x $\frac{1}{2}$ " DEEP.
 15. BEND STRIP OF $\frac{3}{32}$ " THK. SHEET METAL AROUND BOTTOM PLATE AS SHOWN AND TACK WELD. LEVELING PLATE TO BE GALVANIZED IN ACCORDANCE WITH SPECIFICATIONS.
 16. ATTACH ANCHOR BOLT SHIELDS AFTER ANCHOR BOLTS HAVE BEEN TIGHTENED.

RATED BENDING MOMENT X X AXIS INCH LBS.	POST BASE DATA		DIMENSIONS IN INCHES																	
	POST SIZE	BASE TYPE	A	B	C	D	E	F	G	H	J*	K	L	M	P	R	S	T	U	V
83,000	4S	1	9 $\frac{1}{2}$	4 $\frac{3}{4}$	5 $\frac{3}{16}$	3 $\frac{1}{2}$	1 $\frac{1}{4}$	2 $\frac{3}{4}$	1	3 $\frac{11}{16}$	1	1 $\frac{1}{2}$	1 $\frac{1}{4}$	2 $\frac{1}{2}$	3 $\frac{3}{8}$	1 $\frac{1}{4}$	1 $\frac{5}{16}$	7 $\frac{7}{8}$	1 $\frac{1}{8}$	7 $\frac{7}{8}$
232,000	6W	2	12 $\frac{1}{2}$	4 $\frac{3}{4}$	6	5	1 $\frac{1}{4}$	2 $\frac{3}{4}$	1	4 $\frac{1}{2}$	1	1 $\frac{1}{2}$	1 $\frac{1}{4}$	2 $\frac{1}{2}$	3 $\frac{3}{8}$	1 $\frac{1}{4}$	1 $\frac{5}{16}$	7 $\frac{7}{8}$	1 $\frac{1}{8}$	7 $\frac{7}{8}$
489,000	8W	3	16	7	6 $\frac{1}{8}$	6	2	4 $\frac{1}{4}$	1 $\frac{1}{2}$	5 $\frac{3}{8}$	1 $\frac{1}{2}$	1 $\frac{1}{4}$	1 $\frac{1}{2}$	4	1 $\frac{1}{2}$	3 $\frac{3}{8}$	2 $\frac{1}{16}$	1 $\frac{3}{4}$	1 $\frac{5}{8}$	1 $\frac{1}{8}$
761,000	10W	4	20	7	9 $\frac{3}{4}$	8	2	4 $\frac{1}{4}$	1 $\frac{1}{2}$	7	1 $\frac{1}{2}$	1 $\frac{1}{4}$	1 $\frac{1}{2}$	4	1 $\frac{1}{2}$	3 $\frac{3}{8}$	2 $\frac{1}{16}$	1 $\frac{3}{4}$	1 $\frac{5}{8}$	1 $\frac{1}{8}$
1,000,000	12W	5	24	7	11 $\frac{1}{2}$	10	2	4 $\frac{1}{4}$	1 $\frac{1}{2}$	8 $\frac{3}{4}$	1 $\frac{1}{2}$	1 $\frac{1}{4}$	1 $\frac{1}{2}$	4	1 $\frac{1}{2}$	3 $\frac{3}{8}$	2 $\frac{1}{16}$	1 $\frac{3}{4}$	1 $\frac{5}{8}$	1 $\frac{1}{8}$
1,210,000	14W	6	28	7	11 $\frac{1}{2}$	12	2	4 $\frac{1}{4}$	1 $\frac{1}{2}$	8 $\frac{3}{4}$	1 $\frac{1}{2}$	1 $\frac{1}{4}$	1 $\frac{1}{2}$	4	1 $\frac{1}{2}$	3 $\frac{3}{8}$	2 $\frac{1}{16}$	1 $\frac{3}{4}$	1 $\frac{5}{8}$	1 $\frac{1}{8}$

*BASE PLATE THICKNESS MUST BE AS SPECIFIED



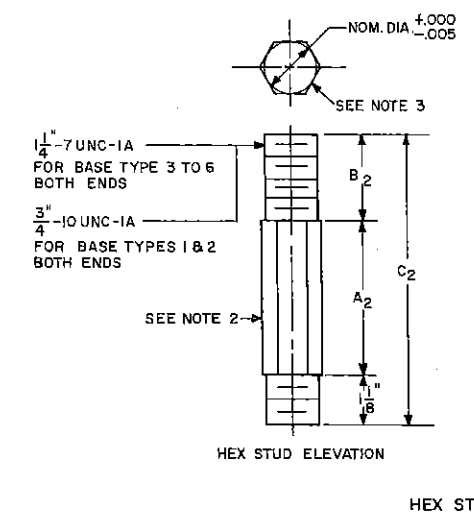
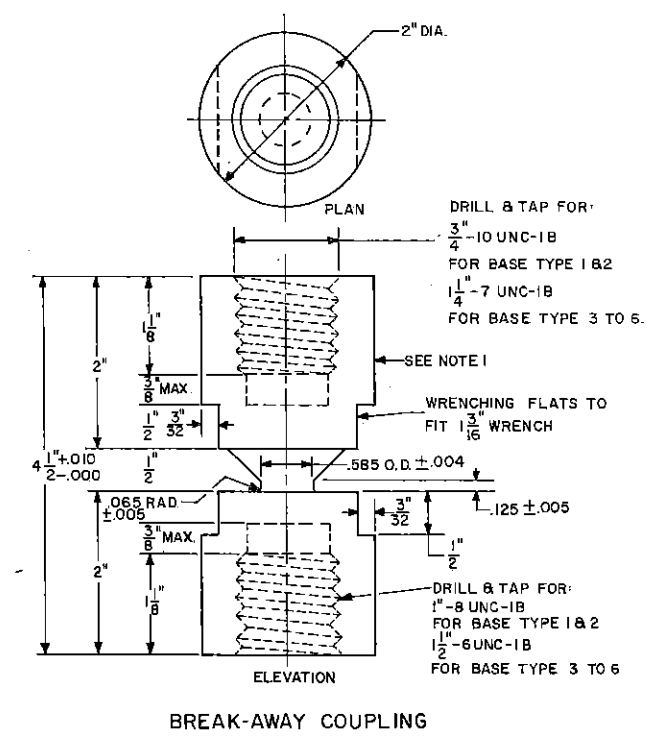
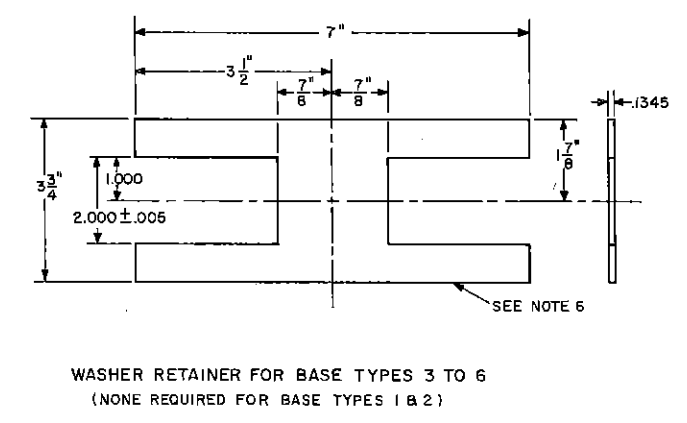
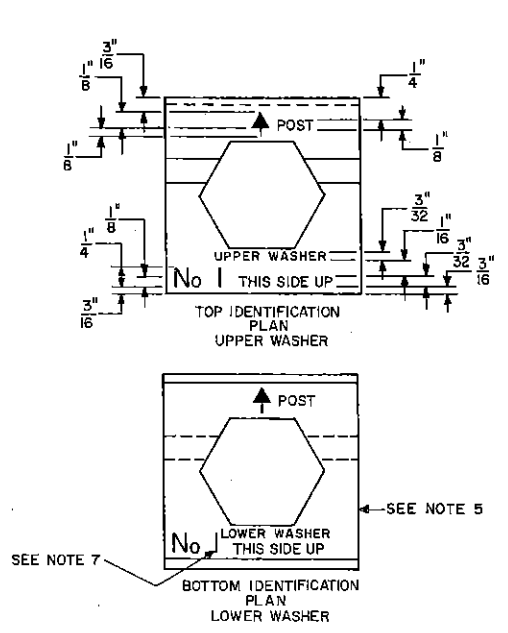
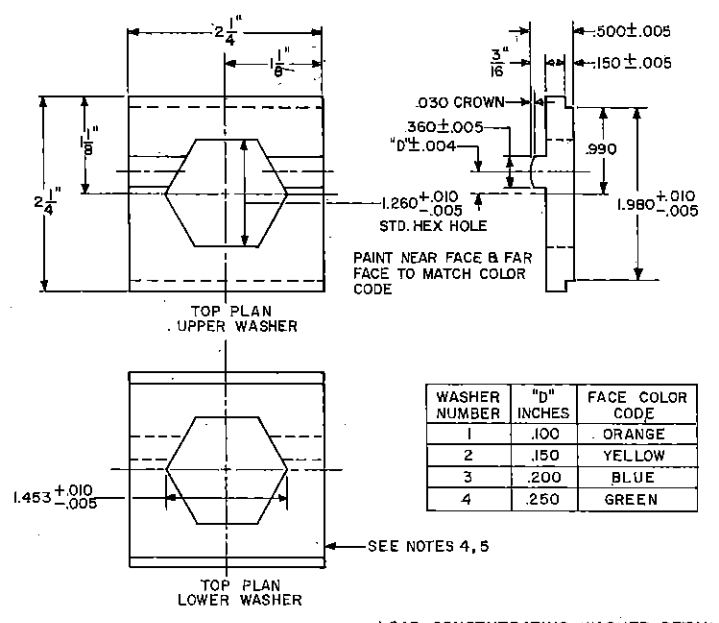
Commonwealth of Pennsylvania
DEPARTMENT OF TRANSPORTATION
BUREAU OF TRAFFIC ENGINEERING

POST MOUNTED SIGNS-TYPE II

POST BASE DETAILS

Recommended <i>7/27/76</i>	Approved <i>7/26/76</i>	Sheet <i>2 of 3</i>
Director, Bureau of Traffic Engineering	Deputy Chief Highway Engineer	ECT

- NOTES:
1. MATERIAL: STEEL, ASTM A-304 OR EQUAL.
 2. MATERIAL: STEEL, ASTM A-320 OR EQUAL.
 3. SUPPLY ONE HEAVY HEX NUT WITH EACH STUD.
 4. MATERIAL: AISI 630 STAINLESS STEEL OR EQUAL.
 5. PROPER WASHER NUMBER & MESSAGE MUST BE PERMANENTLY PLACED ON EACH WASHER, TOP AND BOTTOM, AS SHOWN.
 6. MATERIAL: STEEL, ASTM A-570 OR EQUAL.
 7. LABEL WITH APPROPRIATE WASHER NUMBER.



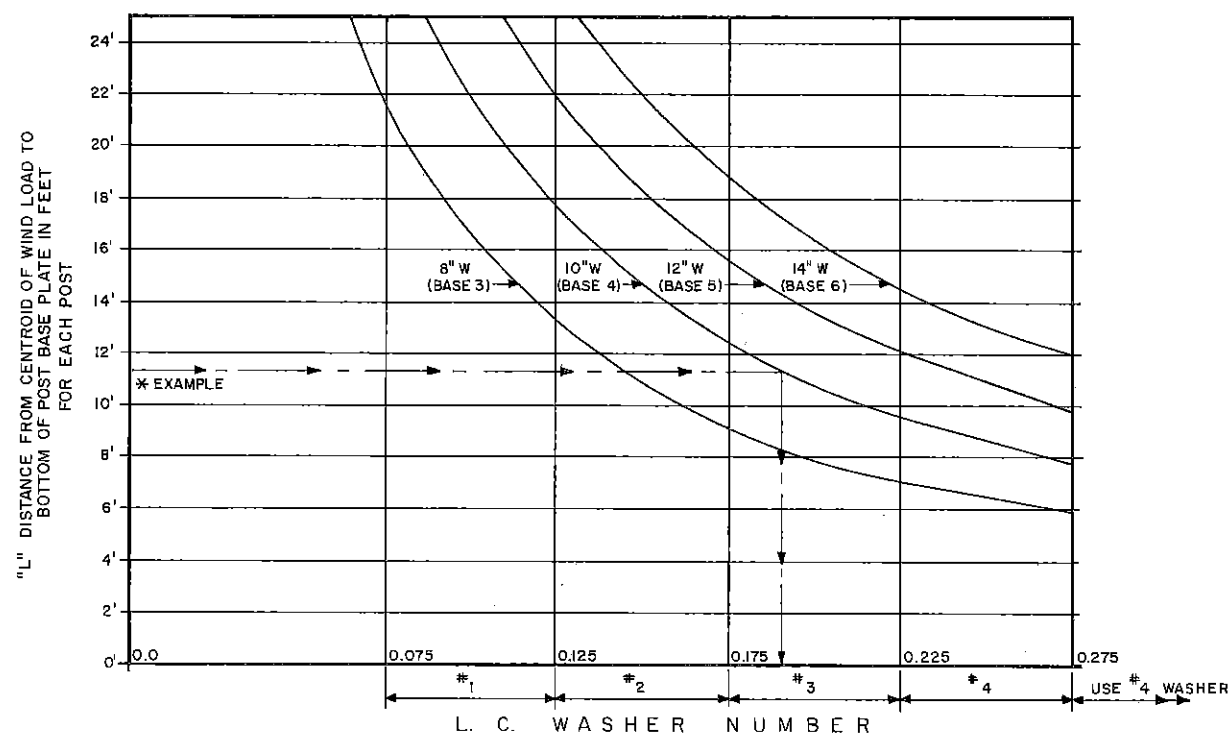
BASE TYPE	A2 INCHES	B2 INCHES	C2 INCHES	HEX SIZE
1	5/16	5/16	3 3/8	3/4
2	"	"	"	"
3	2 1/4	2 1/8	5 1/2	1 1/4
4	"	"	"	"
5	"	"	"	"
6	"	"	"	"

Commonwealth of Pennsylvania
DEPARTMENT OF TRANSPORTATION
BUREAU OF TRAFFIC ENGINEERING

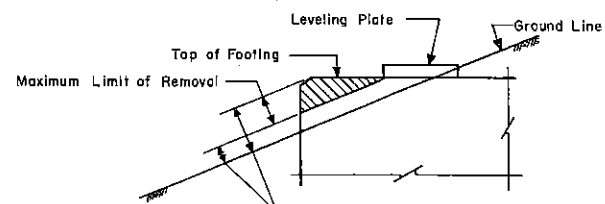
POST MOUNTED SIGNS - TYPE II
BREAK-AWAY COUPLING DETAILS

Recommended 7/22/76 J.R. Donahue Director, Bureau of Traffic Engineering	Approved 7/26/76 Robert R. Muever Deputy Chief Highway Engineer	Sht. 3 of 5 TC7702 A
--	---	-------------------------

LOAD CONCENTRATING WASHER AND BASE TYPE SELECTION CHART

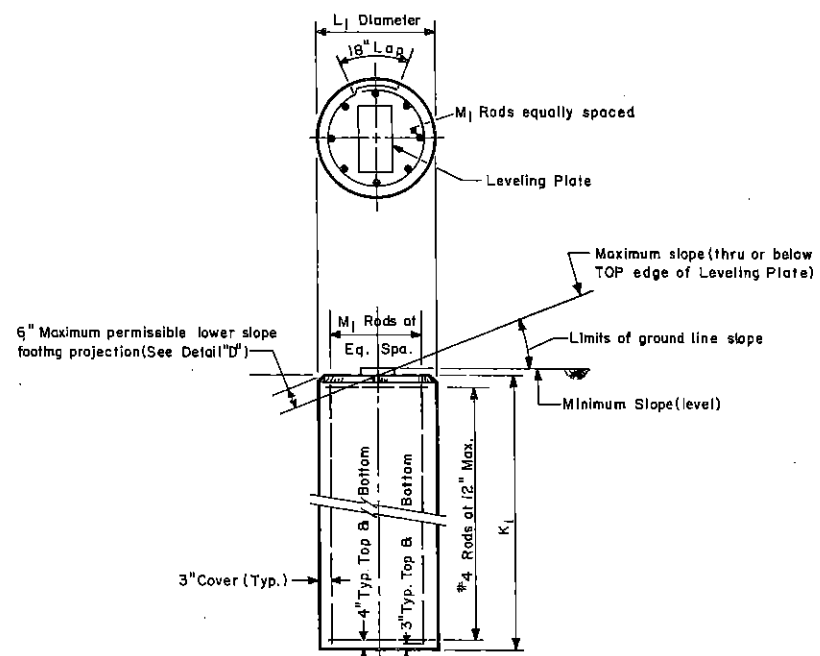


NOTE:
NO LOAD CONCENTRATING WASHERS ARE REQUIRED FOR BASE TYPE 1 AND BASE TYPE 2.



Footing projections above Ground Line shall be minimized. The maximum permissible footing projection shall be 6" on the lower slope side. Where necessary, the shaded area of the footing shall be removed. Reinforcement shall be bent to fit.

DETAIL "D"



SKETCH "C"

BASE TYPE	DIAMETER L ₁ FEET	DEPTH K ₁ FEET	REINF. STEEL M ₁
1	2.0	4.25	8-#5
2	2.0	4.50	8-#5
3	2.5	6.00	8-#5
4	3.0	6.75	8-#5
5	3.0	7.50	8-#5
6	3.0	8.00	8-#5

FOOTING DETAILS

GENERAL NOTES FOR SELECTION OF SIGN SUPPORT COMPONENTS BY TABLE AND CHART

I LOAD CONCENTRATING WASHER AND BASE TYPE SELECTION CHART

1. DETERMINE VALUE OF "L₁" (SEE CHART).
2. HAVING DETERMINED VALUE OF "L₁", ENTER LOAD CONCENTRATING WASHER AND BASE TYPE SELECTION CHART FROM LEFT SIDE AND CONTINUE ACROSS TO INTERSECTION WITH PREVIOUSLY SELECTED POST DEPTH AND FIND CORRESPONDING BASE TYPE NUMBER. DROP VERTICALLY DOWN FROM CURVE FOR REQUIRED L.C. WASHER NUMBER.

* EXAMPLE:
ASSUME SIGN WITH A VALUE OF L₁ = 11.5 FEET AND POST DEPTH OF 10 IN. FROM CHART FIND BASE 4 AND L.C. WASHER #3 REQUIRED

II FOOTING SELECTION TABLE

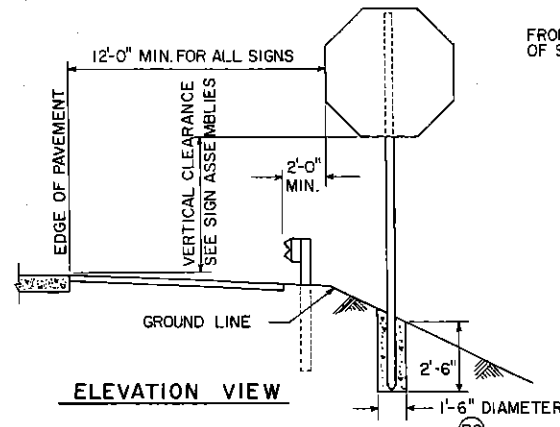
1. THE EMBEDMENT OF FOOTINGS IS BASED ON FIGURE 6 OF THE AASHO SPECIFICATIONS. THE SOIL IS ASSUMED CAPABLE OF DEVELOPING A SOIL PRESSURE OF 2,000 PSF IN AN UNDISTURBED OR ADEQUATELY COMPACTED CONDITION.
2. ENTER TABLE FOR PREVIOUSLY SELECTED BASE TYPE AND FIND REQUIRED FOOTING VALUES AS SHOWN IN SKETCH "C".

Commonwealth of Pennsylvania
DEPARTMENT OF TRANSPORTATION
BUREAU OF TRAFFIC ENGINEERING

**POST MOUNTED SIGNS - TYPE II
WASHER, BASE, &
FOOTING SELECTION TABLES**

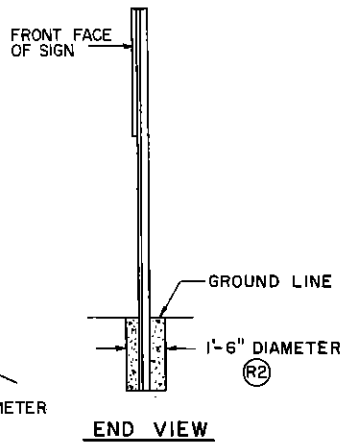
Recommended <u>7/22/76</u> <u>J.R. Donaghy</u> Director, Bureau of Traffic Engineering	Approved <u>7/26/76</u> <u>Robert P. Moore</u> Deputy Chief Highway Engineer	SM <u>4 of 5</u> TC7701A
---	---	-----------------------------

DISTRICT	COUNTY	ROUTE	SECTION	SHEET

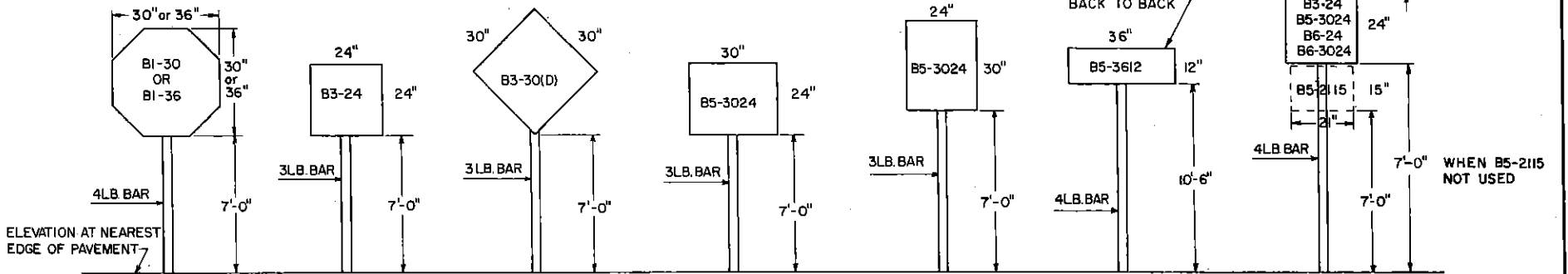


AUGERED POST DETAIL

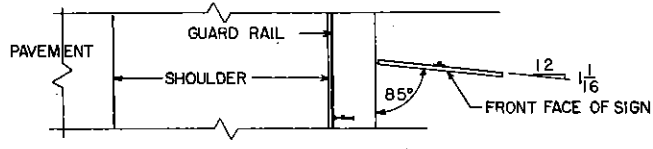
NOTE:
FOR LOCATIONS WHERE THERE IS AN UNMOUNTABLE CURB, THE HORIZONTAL CLEARANCE SHALL BE 2'-0" MINIMUM BEYOND THE FACE OF THE CURB. THE DETAILS AND CLEARANCES SHOWN ARE TYPICAL FOR ALL SIGN INSTALLATIONS.



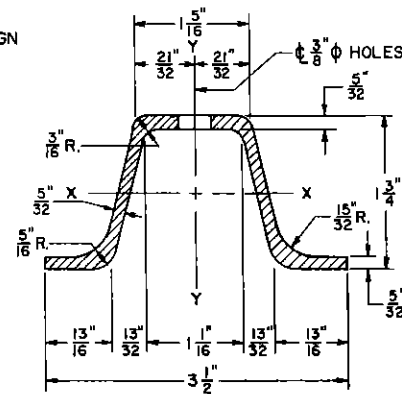
END VIEW



ELEVATION AT NEAREST EDGE OF PAVEMENT

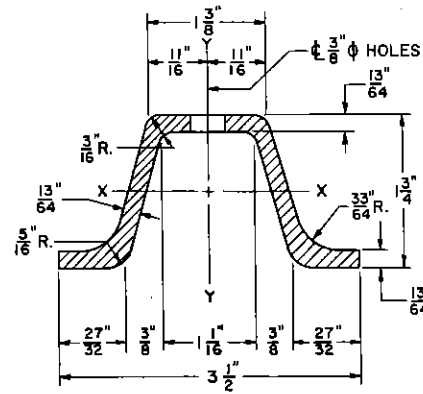


PLAN VIEW



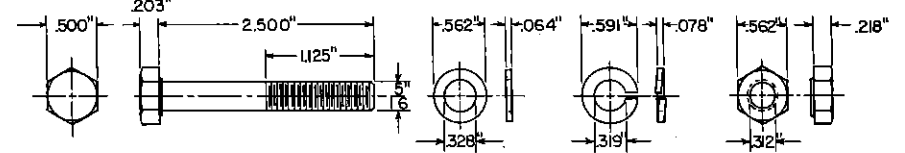
3 LB. BAR

S.M. X-X = 0.392 IN.³
S.M. Y-Y = 0.456 IN.³



4 LB. BAR

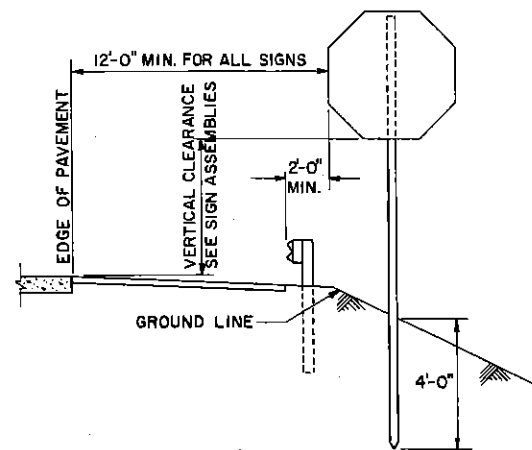
S.M. X-X = 0.466 IN.³
S.M. Y-Y = 0.583 IN.³



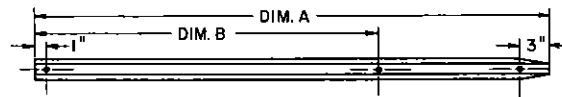
ALUMINUM BOLT (SIGN TO POST)

NOTE:

- A flat washer shall be used on the face of all signs.
- All materials & workmanship shall be in accordance with the appropriate specification in Penn D.O.T. Form 408 and/or 409.



DRIVEN POST DETAIL



WEIGHT	LENGTH DIM. A	HOLES DIM. B
3#	11'-0"	8'-6" (102 holes)
3#	12'-6"	10'-0" (120 holes)
3#	13'-6"	11'-0" (132 holes)
4#	15'-0"	11'-0" (132 holes)
4#	17'-0"	13'-0" (156 holes)
4#	19'-0"	15'-0" (180 holes)
4#	21'-0"	17'-0" (204 holes)

BAR POST SECTIONS AND DETAILS

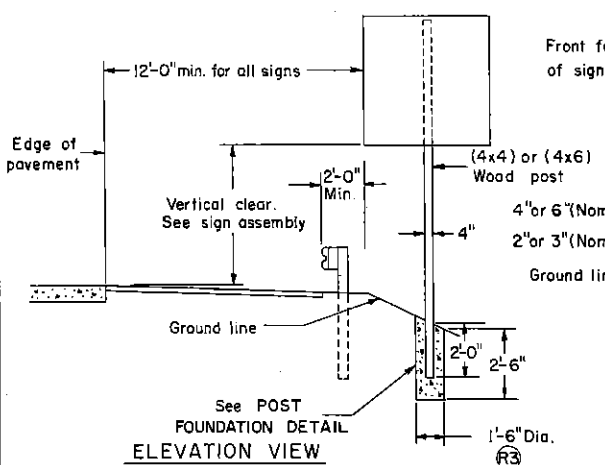
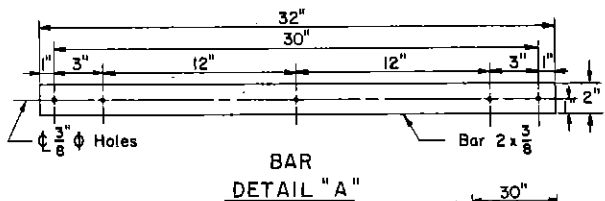
R2 12-7-73	
R1 16-7-73	
REVISIONS	

**Commonwealth of Pennsylvania
DEPARTMENT OF TRANSPORTATION
BUREAU OF TRAFFIC ENGINEERING**

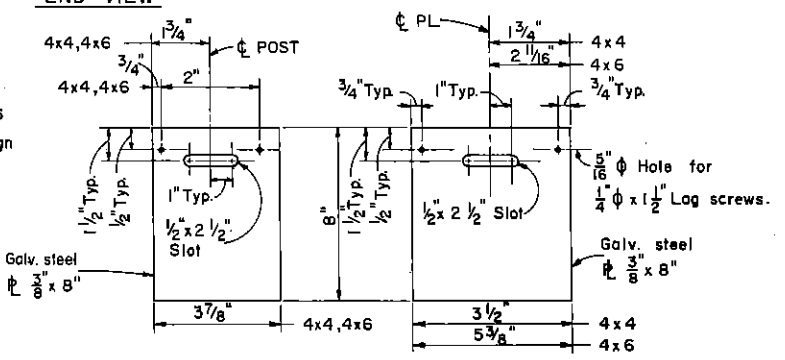
POST MOUNTED SIGNS, TYPE B

Recommended _____	Approval _____	Sht. <u>1</u> of <u>1</u>
Director, Bureau of Traffic Engineering	Deputy Chief Highway Engineer	TC 7702 B

DISTRICT	COUNTY	ROUTE	SECTION	SHEET
----------	--------	-------	---------	-------

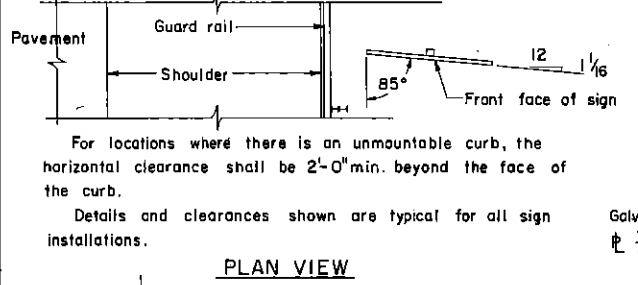


END VIEW

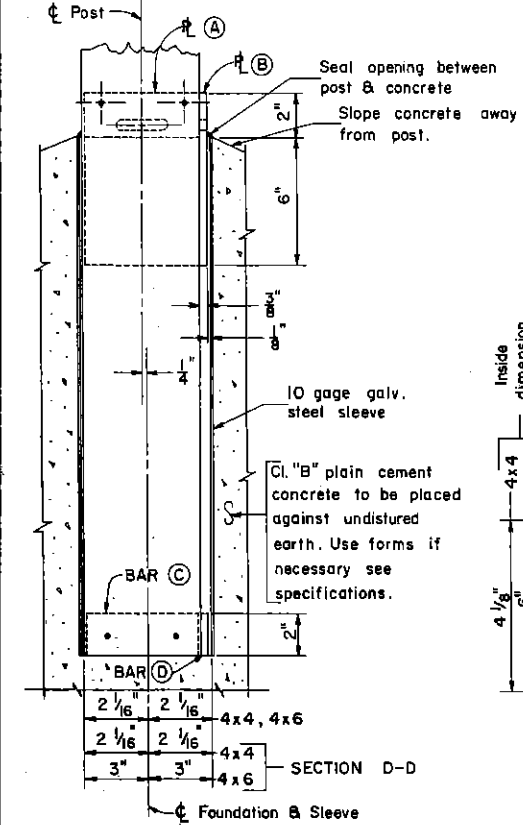


SHIM PLATE A

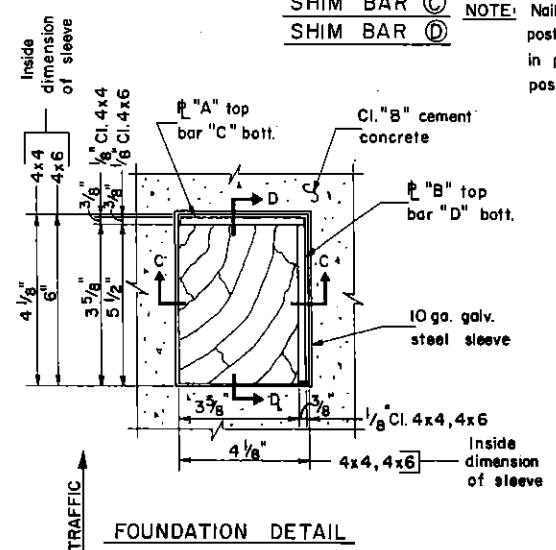
SHIM PLATE B



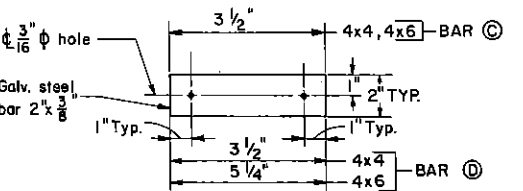
PLAN VIEW



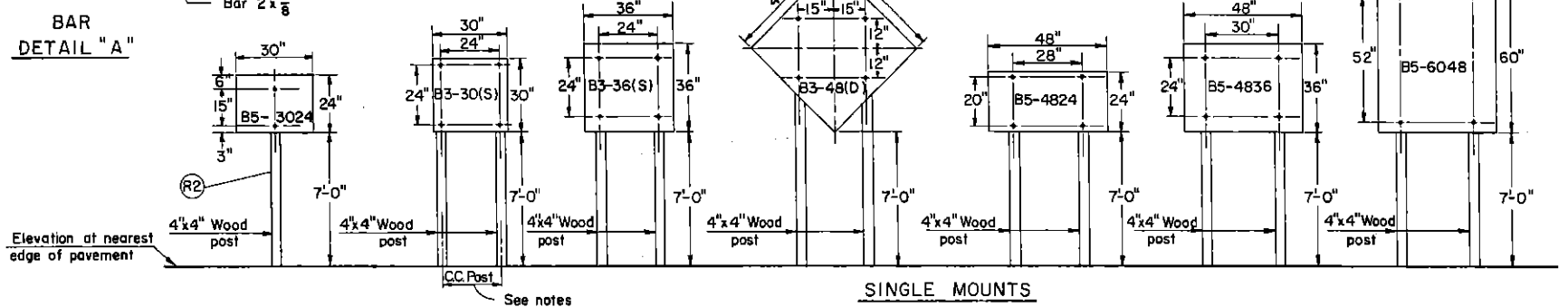
SECTION C-C (SHOWN)
SECTION D-D (SIMILAR & NOTED)



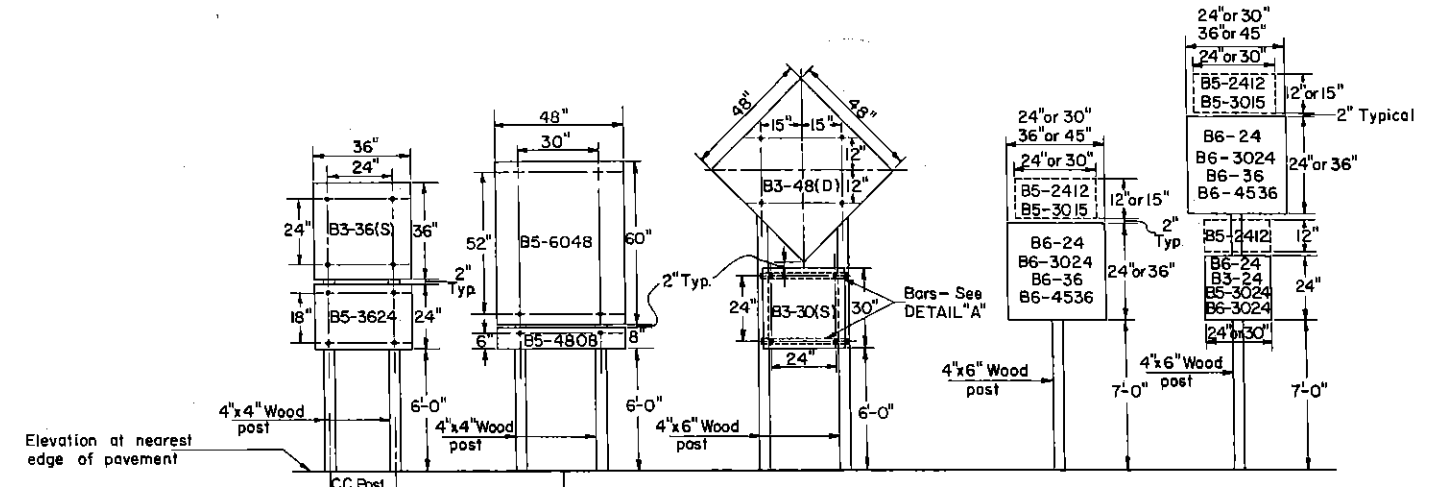
FOUNDATION DETAIL



SHIM BAR C NOTE: Nail shim bar to post to hold bar in place while post is being placed.
SHIM BAR D

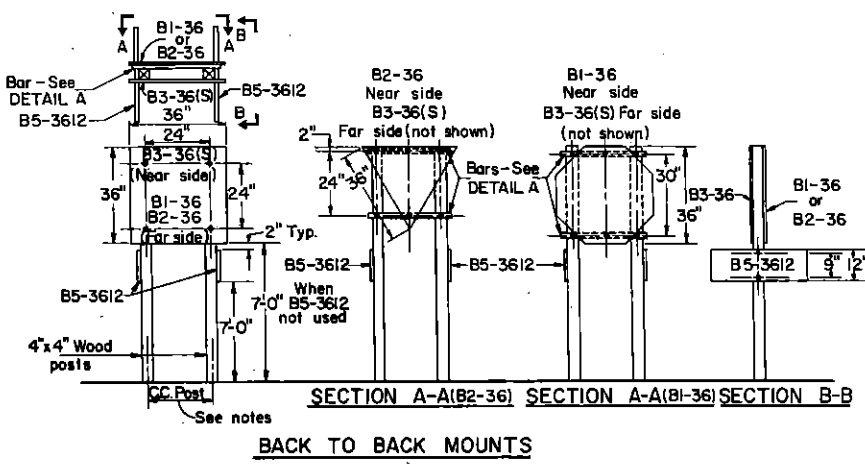


SINGLE MOUNTS



MULTIPLE MOUNTS

- NOTES:
- For demonstrative purpose all signs are shown as having a rectangular shape. The size of post will be determined using the maximum horizontal and vertical dimensions of the sign regardless of shape.
 - For details of bolts and size required see sheet 2 of 2.
 - The C.C. post dimensions on two post installations shall be determined by the bolt hole spacing on the sign blanks.
 - A flat washer shall be used on the face of all signs.
 - All material shall conform to the appropriate specifications as outlined in Penn DOT form 408 and/or 409.
 - Steel sleeves shall be galvanized in accordance with ASTM A123.



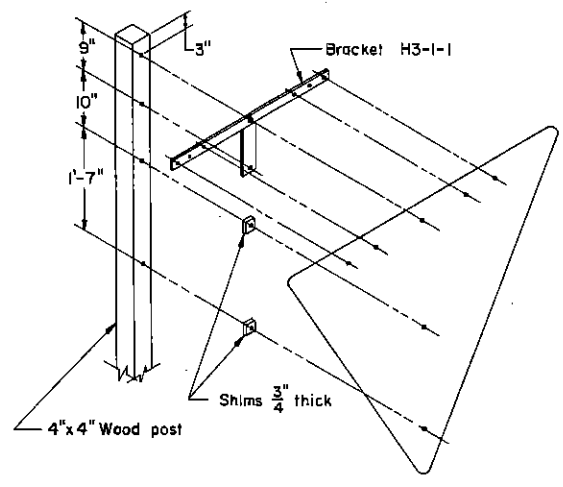
BACK TO BACK MOUNTS

REVISIONS	R4 10-20-75
	R3 12-7-73
	R2 9-19-73
	R1 6-22-73

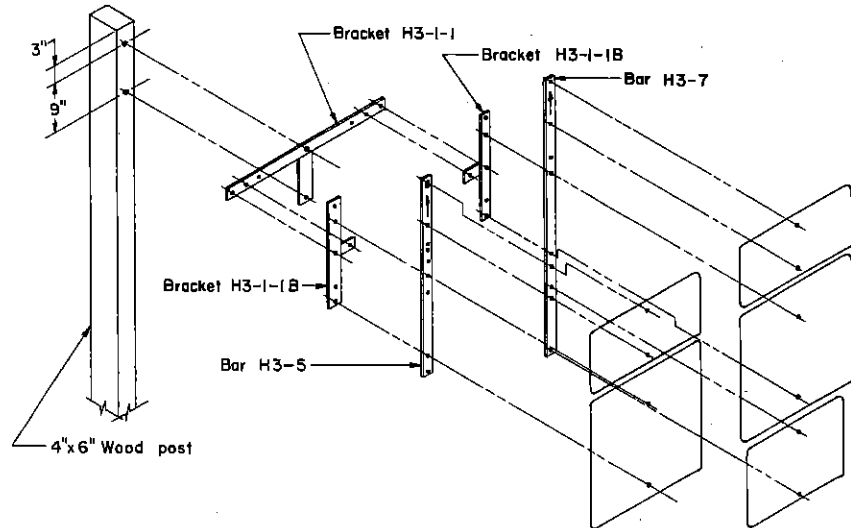
Commonwealth of Pennsylvania
DEPARTMENT OF TRANSPORTATION
BUREAU OF TRAFFIC ENGINEERING

POST MOUNTED SIGNS, TYPE C

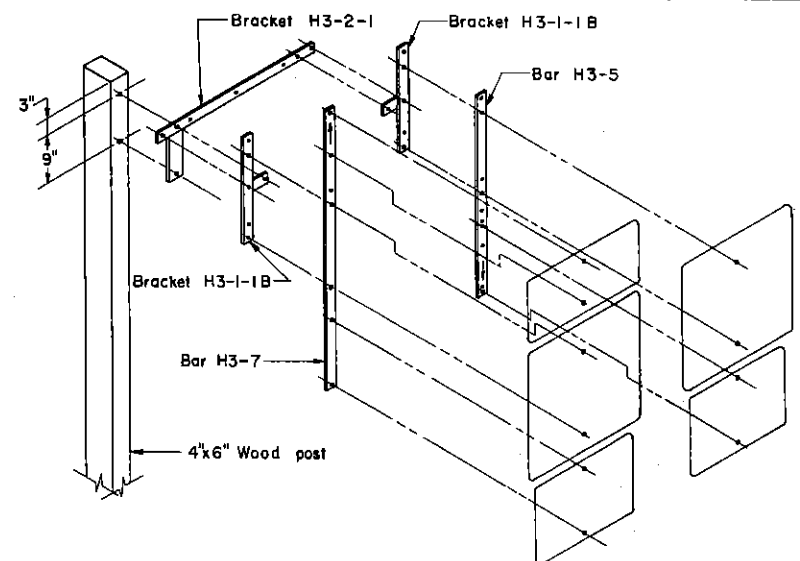
Recommended	Approved	Sht. 1 of 2
Director, Bureau of Traffic Engineering	Deputy Chief Highway Engineer	TC 7702 C



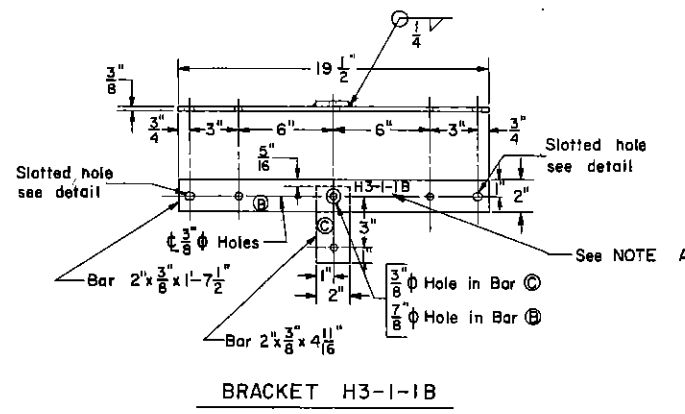
TYPICAL YIELD SIGN ASSEMBLY



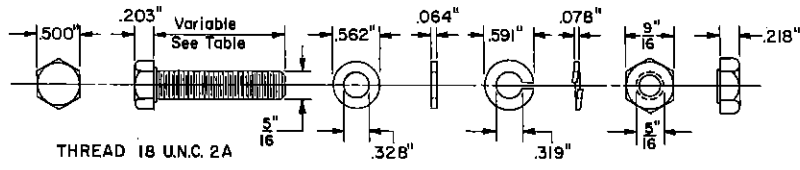
ROUTE MARKER BRACKET ASSEMBLY
TYPE I



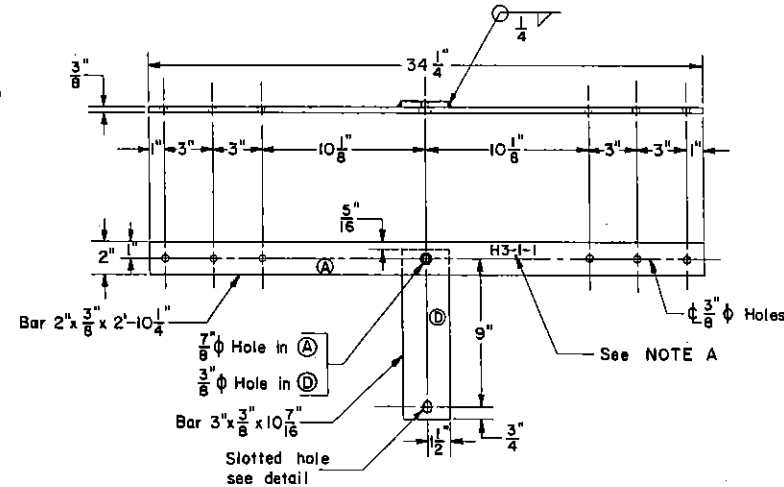
ROUTE MARKER BRACKET ASSEMBLY
TYPE II



BRACKET H3-1-1B



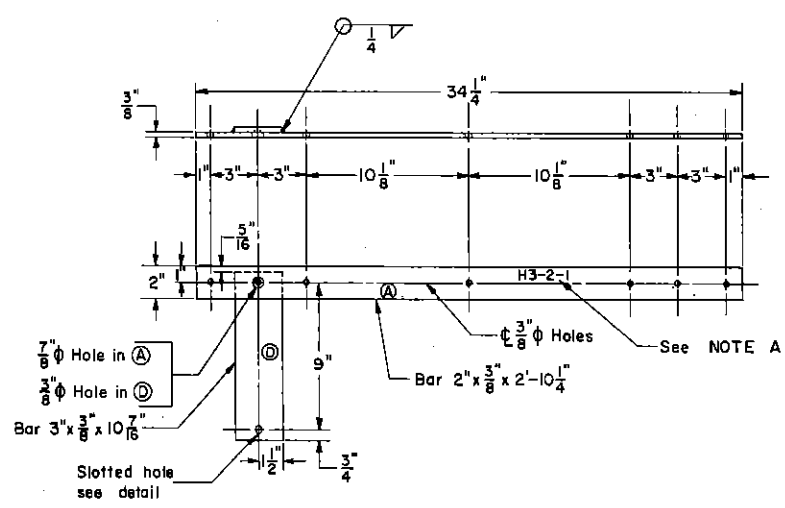
THREAD 18 U.N.C. 2A



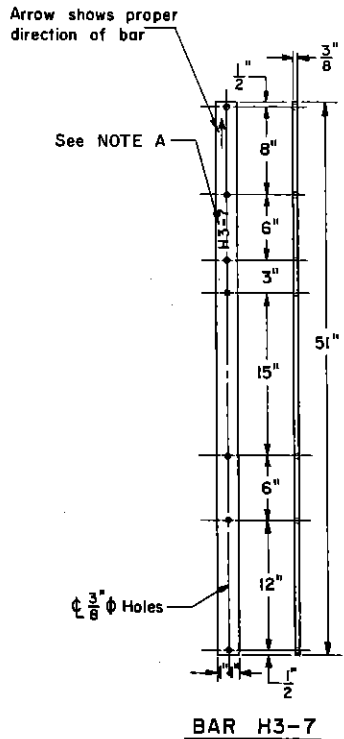
BRACKET H3-1-1

BOLT TABLE	
LENGTH	DESCRIPTION
1"	Sign + Bracket
1 1/2"	Sign + Bracket + Bracket
1 1/2"	Bracket + Bracket
5 1/2"	Sign + Bracket(s) + 4"x4" Post
7 1/2"	Bracket(s) + 4"x6" Post
4 1/2"	Sign + 4"x4" Post
6 1/2"	Sign + 4"x6" Post

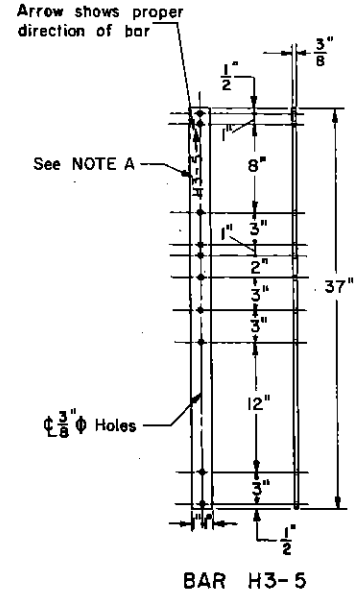
- NOTES:
- A flat washer shall be used on the face of all signs.
 - The vertical clearance from the nearest edge of pavement to the bottom of the sign shall be 7'-0" unless noted otherwise.
 - Break-away holes, where required, shall be drilled in posts and posts erected as shown on sheet 1 of 2.
 - All material shall conform to the appropriate specifications as outlined in P.D.T. form 408 and / or 409.



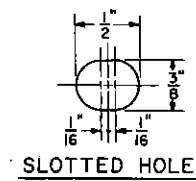
BRACKET H3-2-1



BAR H3-7



BAR H3-5



SLOTTED HOLE

NOTE A
Stamp numbers in 3/8" high letters in positions as shown.

RI 6-27-73
REVISIONS

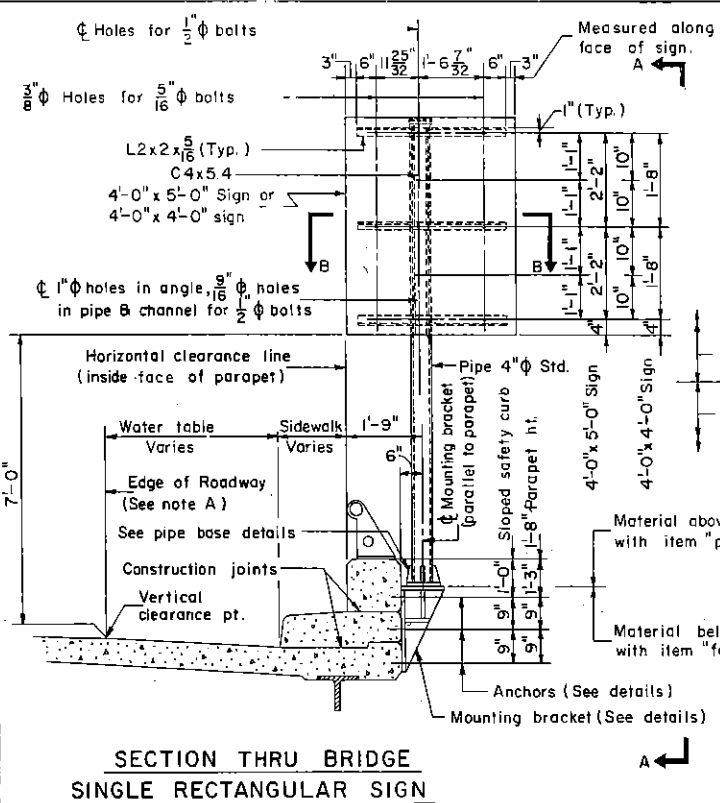
Commonwealth of Pennsylvania
DEPARTMENT OF TRANSPORTATION
BUREAU OF TRAFFIC ENGINEERING

POST MOUNTED SIGNS, TYPE C

Recommended _____	Approved _____	Sht. 2 of 2
Director, Bureau of Traffic Engineering	Deputy Chief Highway Engineer	TC 7702 C

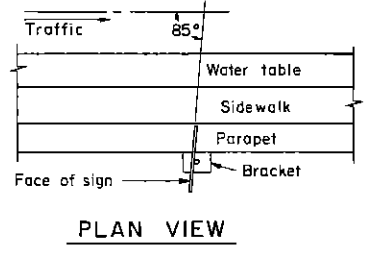
PLACED BY _____
REMOVED BY _____

DISTRICT	COUNTY	ROUTE	SECTION	SHEET

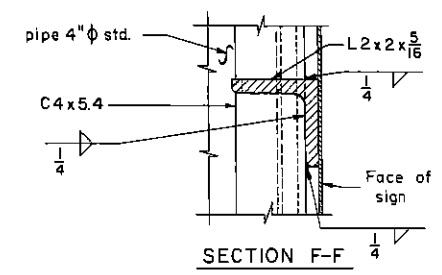


**SECTION THRU BRIDGE
SINGLE RECTANGULAR SIGN**

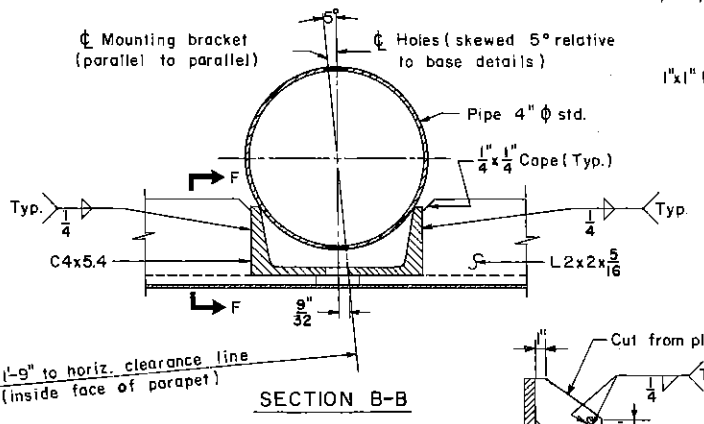
NOTE A
Edge of roadway on bridge is the projection of the edge of roadway on adjacent fill section or as indicated by the pavement edge markings.



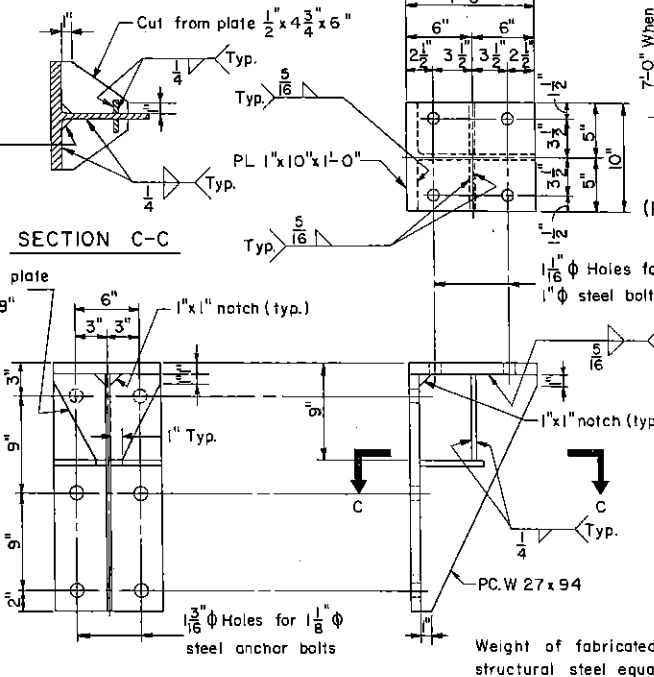
PLAN VIEW



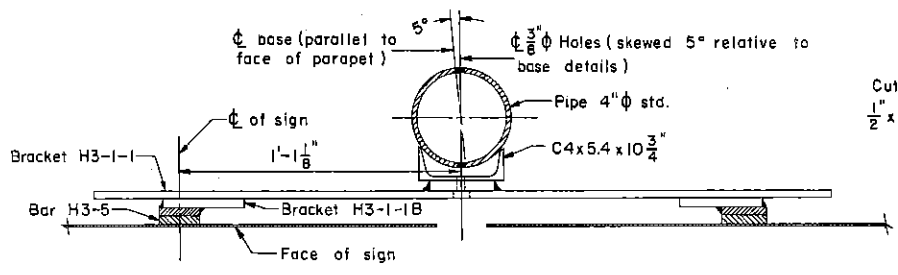
SECTION F-F



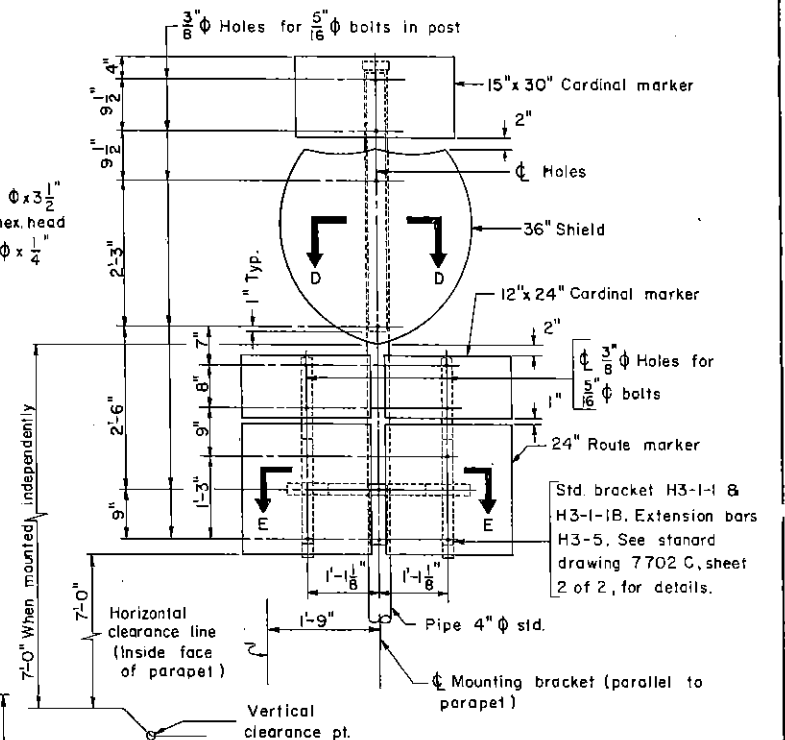
SECTION B-B



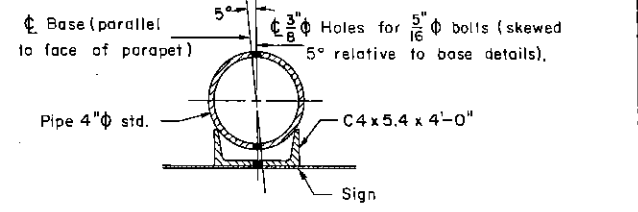
PIPE BASE DETAIL



SECTION E-E



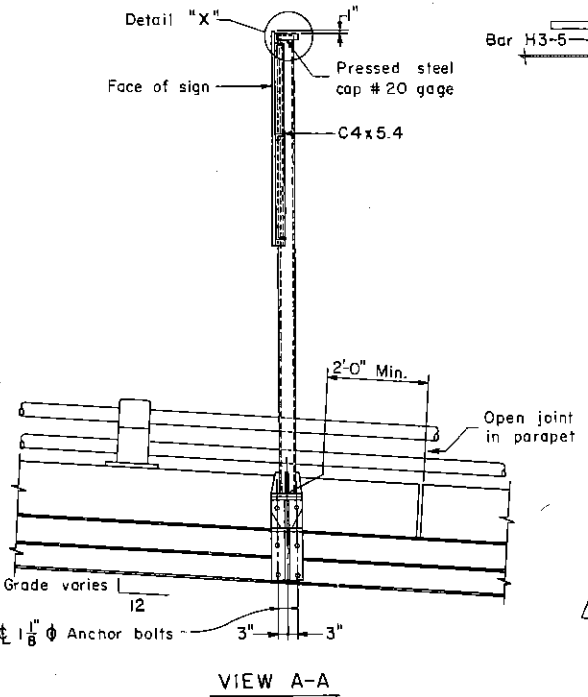
**DOUBLE ROUTE MARKER WITH 36" SHIELD
(PARTS NOT SHOWN SIMILAR TO SINGLE RECTANGULAR SIGN)**



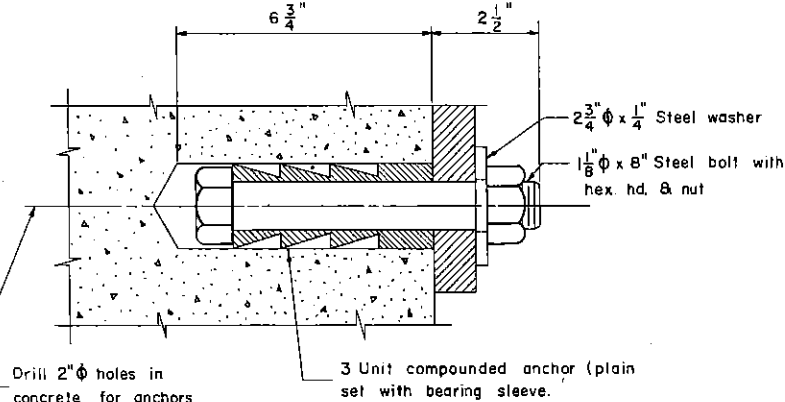
SECTION D-D

NOTES:

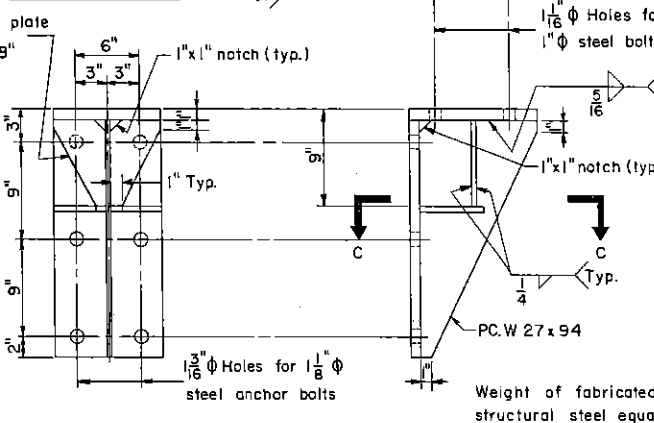
- All materials and workmanship shall conform to the appropriate specifications as outlined in P.D.T. Form 408 and/or 409.
- All steel shall be galvanized in accordance with the appropriate current ASTM specification.
- A flat washer shall be used on the face of all signs.
- For bolt details see sheet 2 of 2.



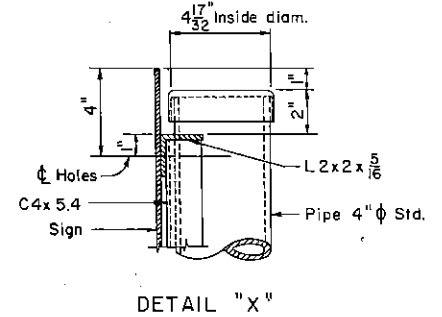
VIEW A-A



ANCHOR DETAIL



MOUNTING BRACKET DETAILS



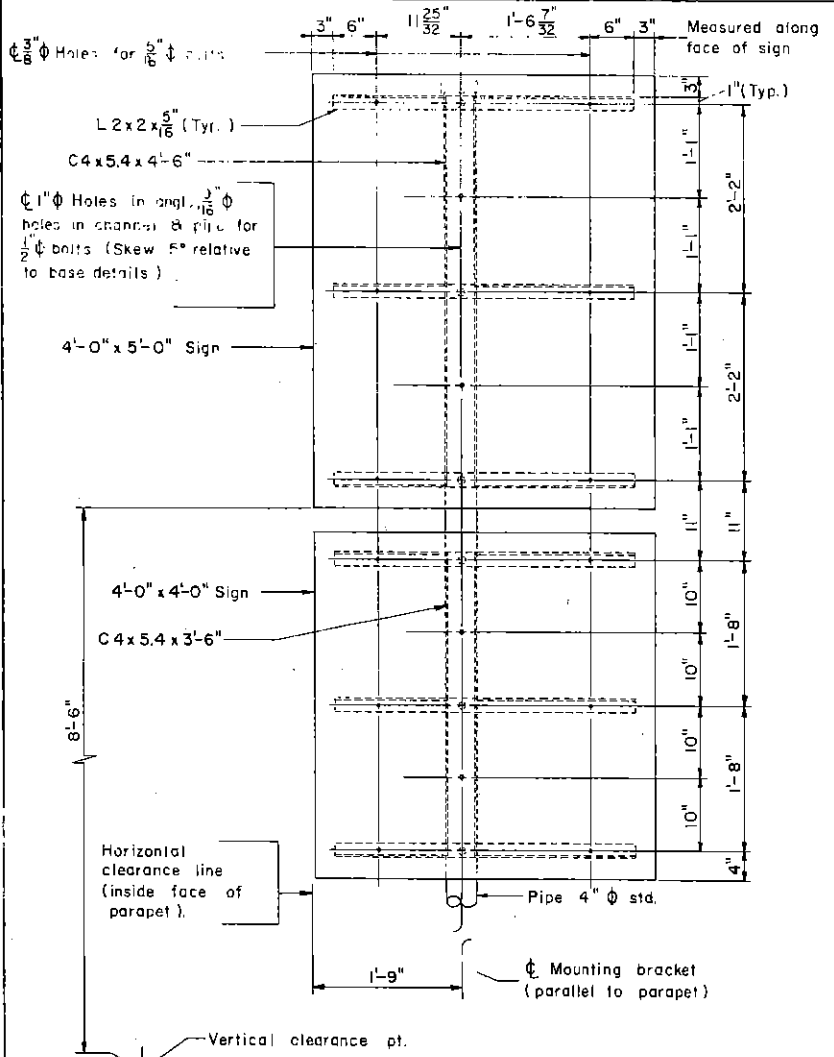
DETAIL "X-X"

REVISIONS	
R1	5-29-73

**Commonwealth of Pennsylvania
DEPARTMENT OF TRANSPORTATION
BUREAU OF TRAFFIC ENGINEERING**

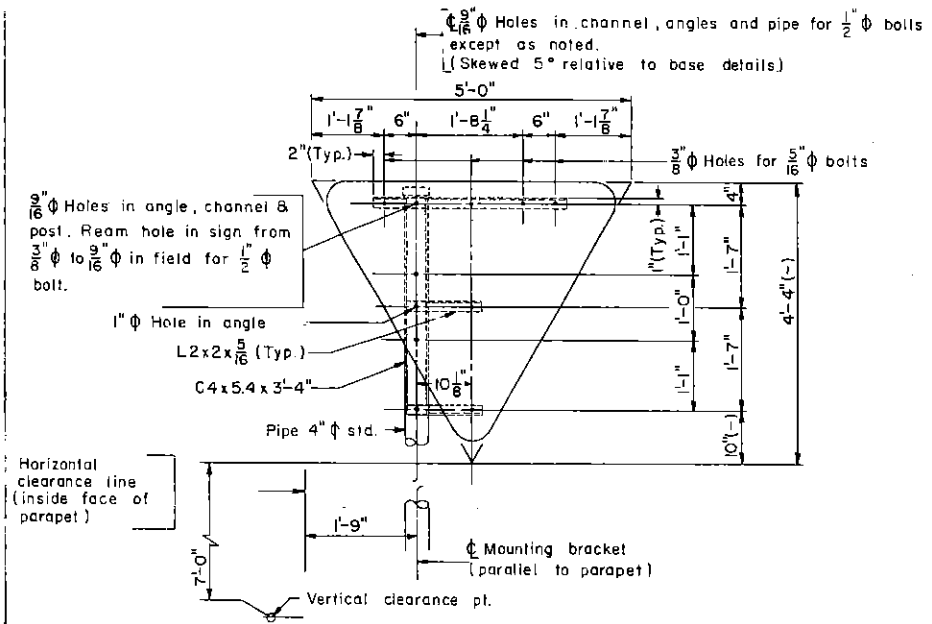
**ERECTION DETAILS
POST MOUNTED SIGNS
STRUCTURE CONNECTION**

Recommended _____	Approval _____	Sht. <u>1</u> of <u>2</u>
Director, Bureau of Traffic Engineering	Deputy Chief Highway Engineer	TC 7702 D



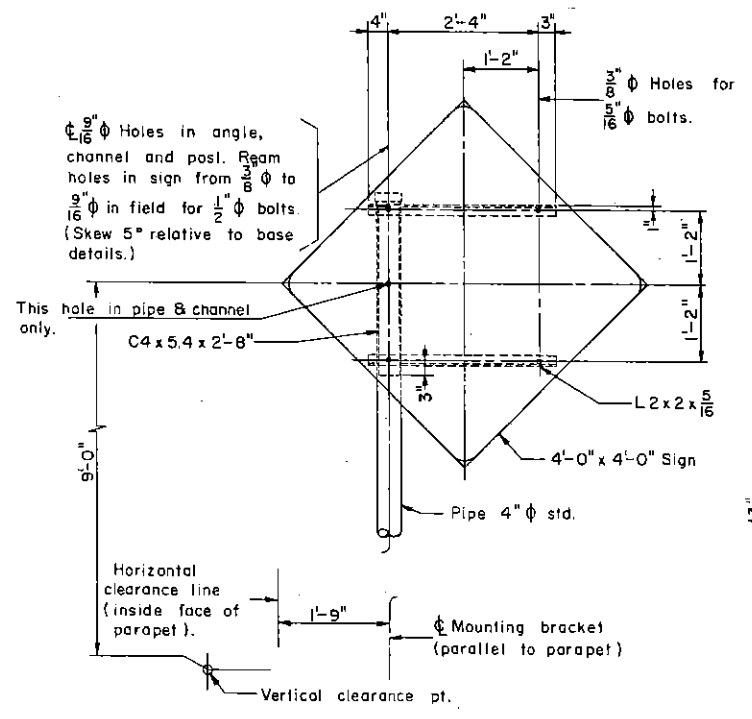
DOUBLE RECTANGULAR SIGN

(PARTS NOT SHOWN SAME AS SINGLE RECTANGULAR SIGN)



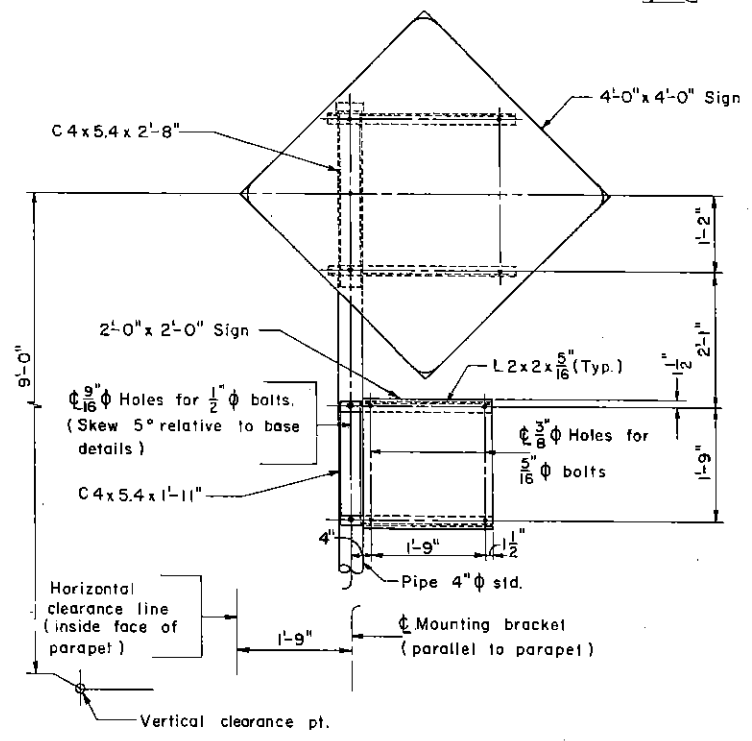
TRIANGULAR SIGN

(PARTS NOT SHOWN SIMILAR TO SINGLE RECTANGULAR SIGN)



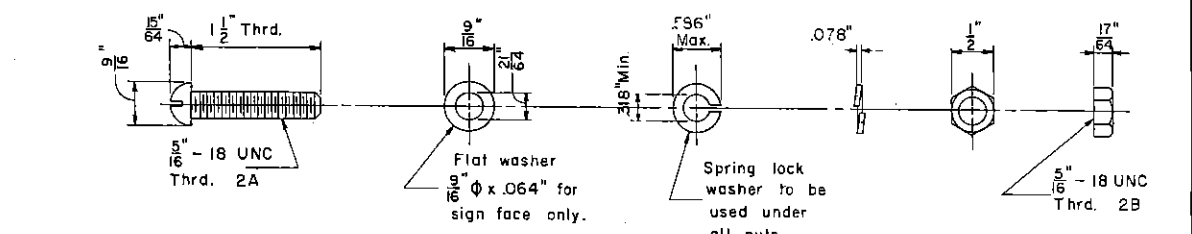
DIAMOND SIGN

(PARTS NOT SHOWN SIMILAR TO SINGLE RECTANGULAR SIGN)

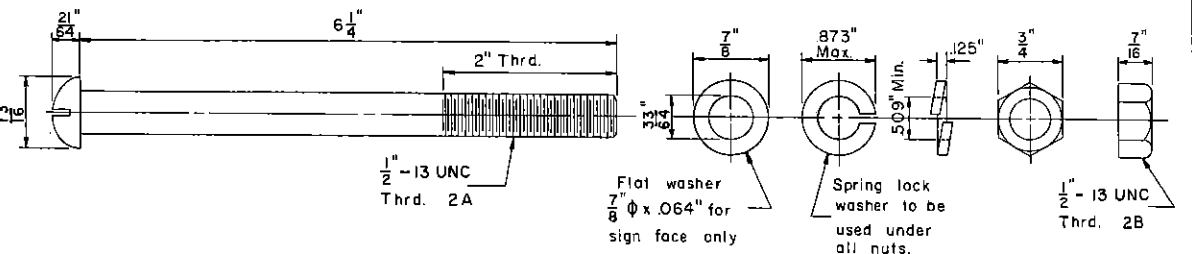


DIAMOND SIGN WITH RECTANGULAR SIGN

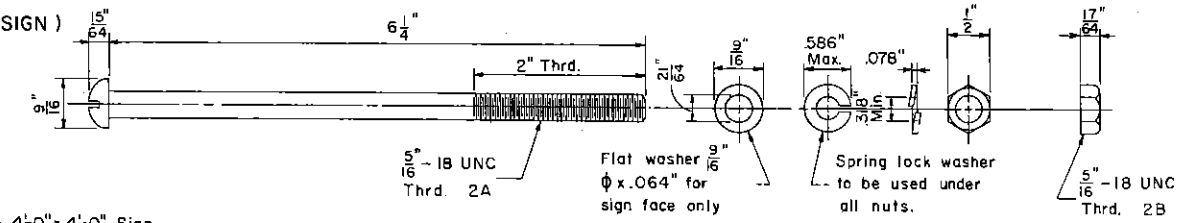
(PARTS NOT SHOWN SIMILAR TO DIAMOND SIGN AND SINGLE RECTANGULAR SIGN)



5/16" ϕ BUTTON HEAD BOLT CONNECTING SIGN TO ANGLE



1/2" ϕ BUTTON HEAD BOLT THRU PIPE POST



5/16" ϕ BUTTON HEAD BOLT THRU PIPE POST

ALUMINUM BOLTS

- NOTES:
- All materials and workmanship shall conform to the appropriate specifications as outlined in P.D.T. Form 408 and/or 409.
 - All steel shall be galvanized in accordance with the appropriate current ASTM specification.
 - A flat washer shall be used on the face of all signs.

REVISIONS	RI 5-30-73
-----------	------------

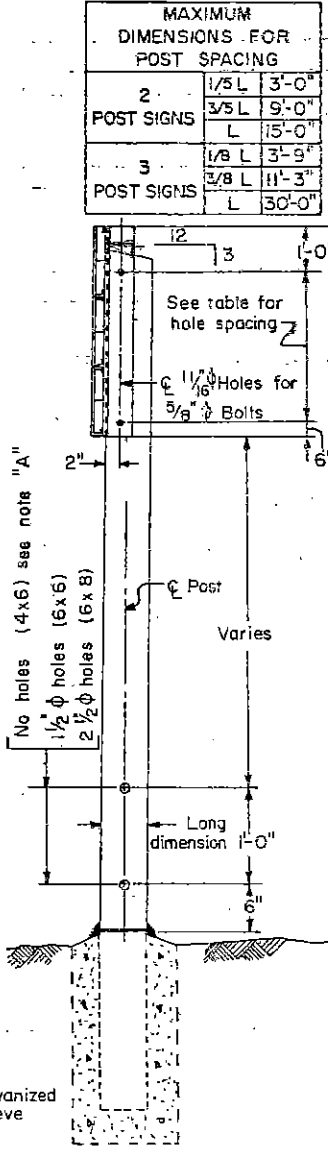
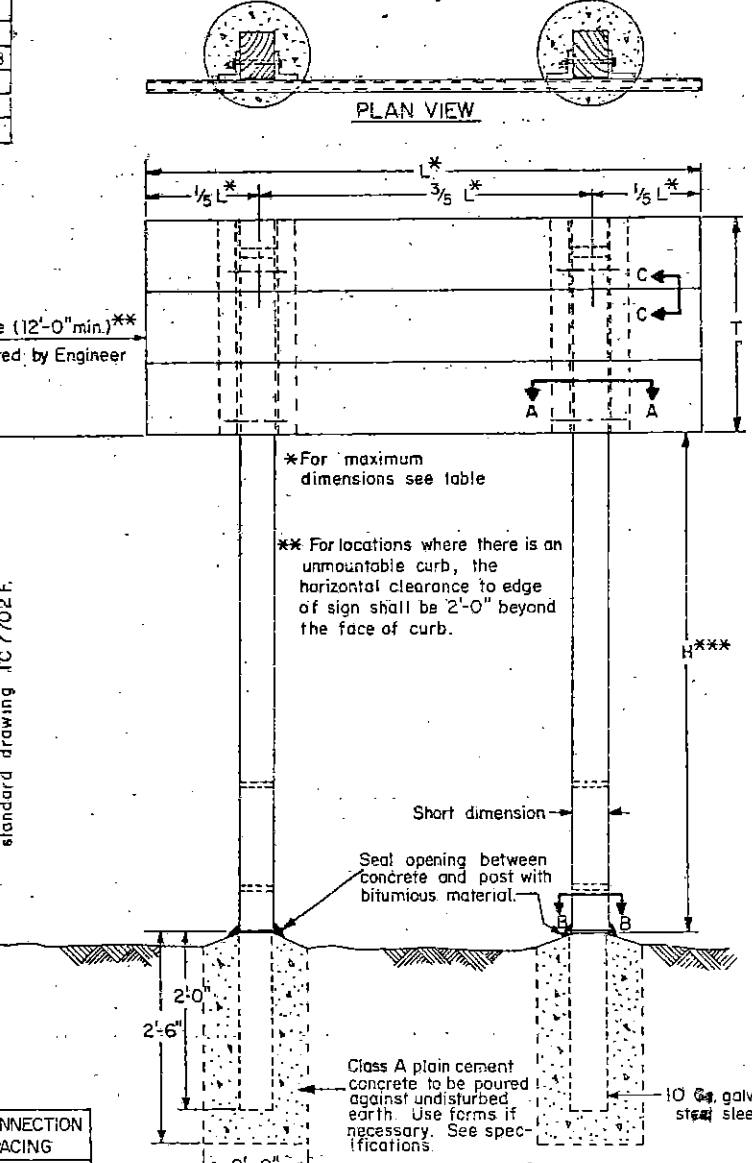
Commonwealth of Pennsylvania
DEPARTMENT OF TRANSPORTATION
BUREAU OF TRAFFIC ENGINEERING

ERECTION DETAILS
POST MOUNTED SIGNS
STRUCTURE CONNECTION

Recommended	Approval	Sht. 2 of 2
Director, Bureau of Traffic Engineering	Deputy Chief Highway Engineer	TC 7702 D

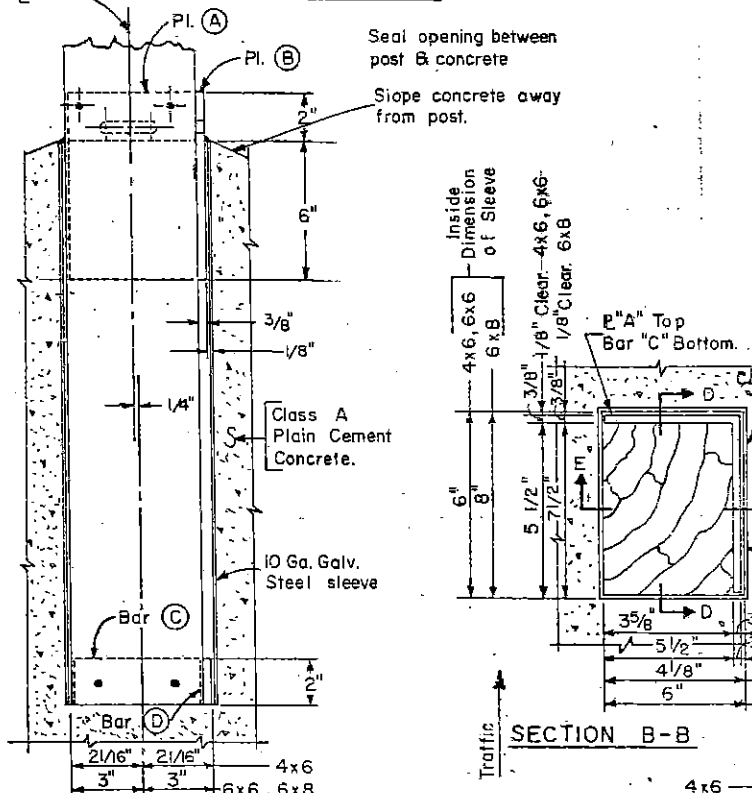
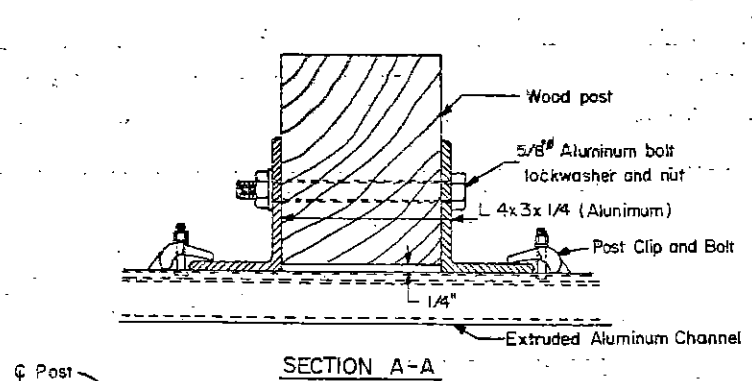
2 POST ASSEMBLIES

L	H	T											
		2	3	4	5	6	7	8	9	10	11	12	
6	4x6	4x6	4x6	4x6	4x6	4x6	6x6	6x6	6x6	6x8	6x8	6x8	
8	4x6	4x6	4x6	6x6	6x6	6x6	6x6	6x6	6x8	6x8	6x8	6x8	
10	4x6	4x6	6x6	6x6	6x6	6x6	6x8	6x8	6x8	6x8	6x8	6x8	
12	6x6	6x6	6x6	6x6	6x6	6x8	6x8	6x8	6x8	6x8	6x8	6x8	
14	6x6	6x6	6x6	6x6	6x6	6x8	6x8	6x8	6x8	6x8	6x8	6x8	
16	6x8	6x8	6x8	6x8	6x8	6x8	6x8	6x8	6x8	6x8	6x8	6x8	
18	6x8	6x8	6x8	6x8	6x8	6x8	6x8	6x8	6x8	6x8	6x8	6x8	
20	6x8	6x8	6x8	6x8	6x8	6x8	6x8	6x8	6x8	6x8	6x8	6x8	
22	6x8	6x8	6x8	6x8	6x8	6x8	6x8	6x8	6x8	6x8	6x8	6x8	
24	6x8	6x8	6x8	6x8	6x8	6x8	6x8	6x8	6x8	6x8	6x8	6x8	
26	6x8	6x8	6x8	6x8	6x8	6x8	6x8	6x8	6x8	6x8	6x8	6x8	
28	6x8	6x8	6x8	6x8	6x8	6x8	6x8	6x8	6x8	6x8	6x8	6x8	
30	6x8	6x8	6x8	6x8	6x8	6x8	6x8	6x8	6x8	6x8	6x8	6x8	

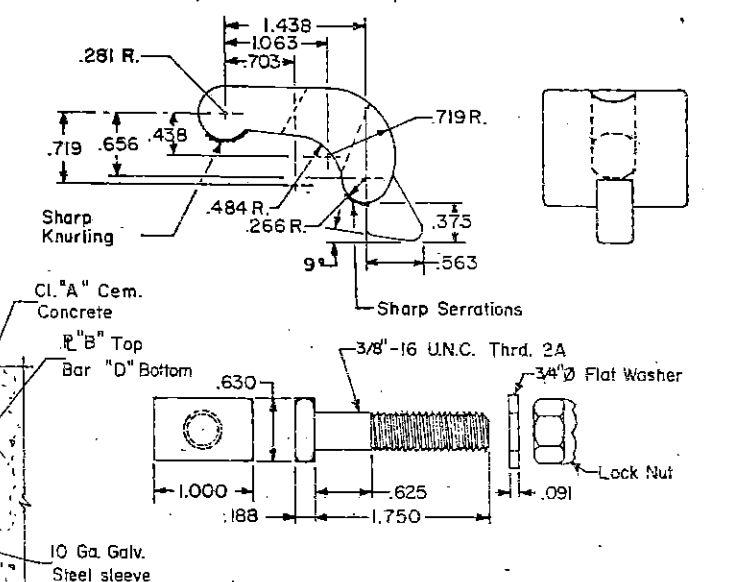
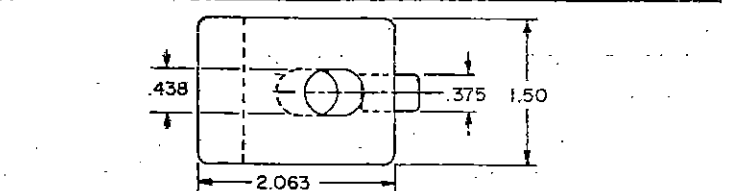


MAXIMUM DIMENSIONS FOR POST SPACING

2 POST SIGNS	1/5 L	3'-0"
	3/5 L	9'-0"
	L	15'-0"
3 POST SIGNS	1/8 L	3'-9"
	3/8 L	11'-3"
	L	30'-0"



DISTRICT	COUNTY	ROUTE	SECTION	SHEET

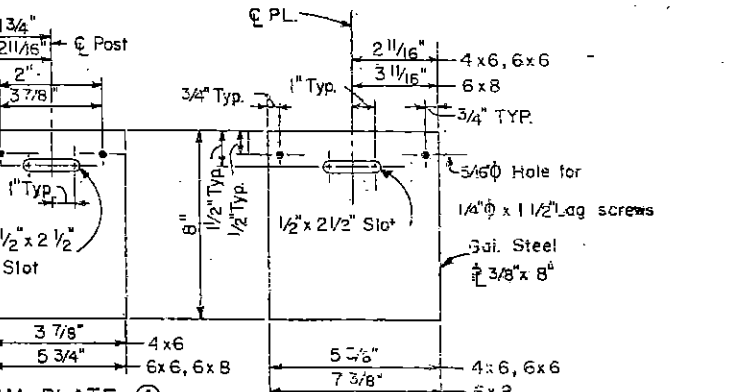
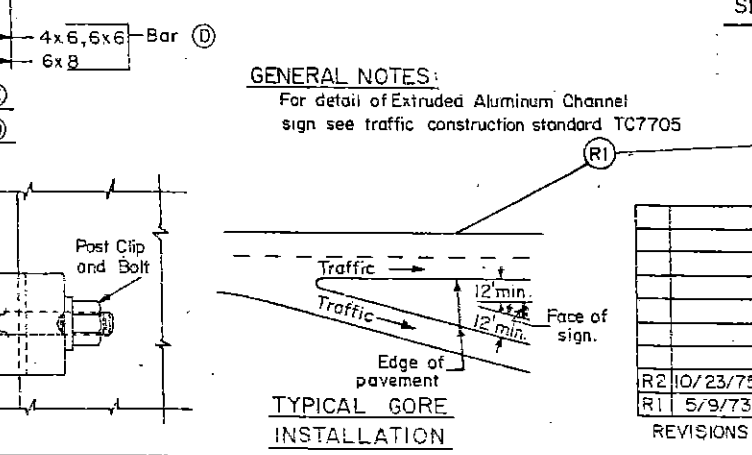
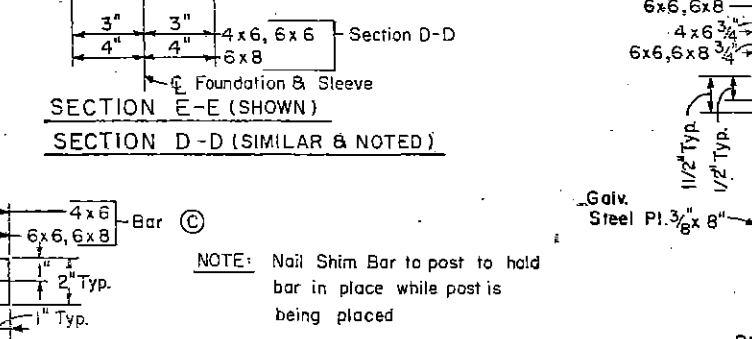
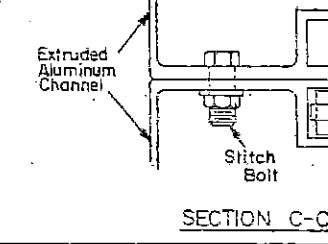
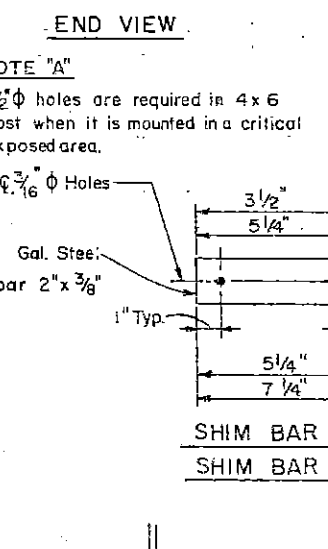
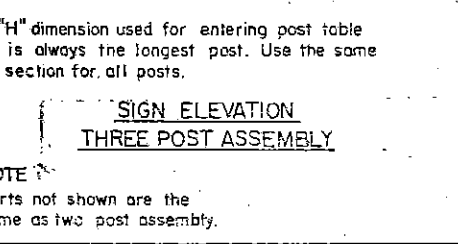
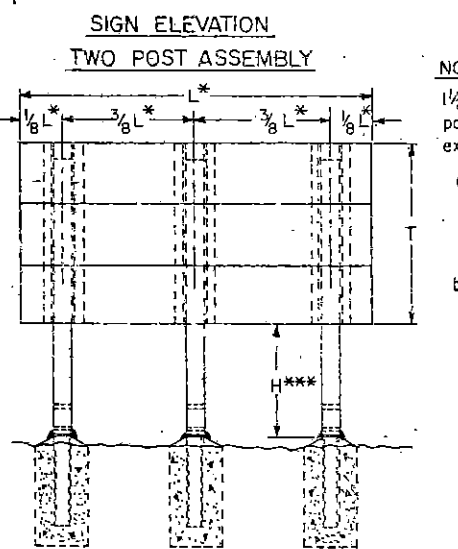


3 POST ASSEMBLIES

L	H	T							
		2	3	4	5	6	7	8	
6	4x6	4x6	6x6	6x6	6x6	6x8	6x8	6x8	
8	4x6	6x6	6x6	6x6	6x6	6x8	6x8	6x8	
10	6x6	6x6	6x6	6x8	6x8	6x8	6x8	6x8	
12	6x6	6x6	6x6	6x6	6x6	6x8	6x8	6x8	
14	6x8	6x8	6x8	6x8	6x8	6x8	6x8	6x8	
16	6x8	6x8	6x8	6x8	6x8	6x8	6x8	6x8	
18	6x8	6x8	6x8	6x8	6x8	6x8	6x8	6x8	
20	6x8	6x8	6x8	6x8	6x8	6x8	6x8	6x8	
22	6x8	6x8	6x8	6x8	6x8	6x8	6x8	6x8	
24	6x8	6x8	6x8	6x8	6x8	6x8	6x8	6x8	
26	6x8	6x8	6x8	6x8	6x8	6x8	6x8	6x8	
28	6x8	6x8	6x8	6x8	6x8	6x8	6x8	6x8	
30	6x8	6x8	6x8	6x8	6x8	6x8	6x8	6x8	

ANGLE CONNECTION BOLT SPACING

T	SPACES
2	1 at 6"
3	2 at 9"
4	2 at 15"
5	3 at 14"
6	3 at 18"
7	4 at 16 1/2"
8	6 at 13"
9	6 at 15"
10	8 at 12 3/4"
11	8 at 14 1/4"
12	8 at 15 3/4"



Commonwealth of Pennsylvania
DEPARTMENT OF TRANSPORTATION
BUREAU OF TRAFFIC ENGINEERING

POST MOUNTED SIGNS, TYPE E
(EXTRUDED ALUMINUM CHANNEL SIGN)

Recommended _____ Approved _____
Director, Bureau of Traffic Engineering Deputy Chief Highway Engineer

REVISIONS
R2 10/23/75
R1 5/9/73

sh. 1 of 2
TC7702 E

PROCEDURE
Enter tables with maximum value of "H" for installation considered and select post selection for sign sizes between those given in tables use the next highest foot. Example L=11'-6" T=5'-6" Use L=12'-0" T=6'-0"

NOTE
Parts not shown are the same as two post assembly.

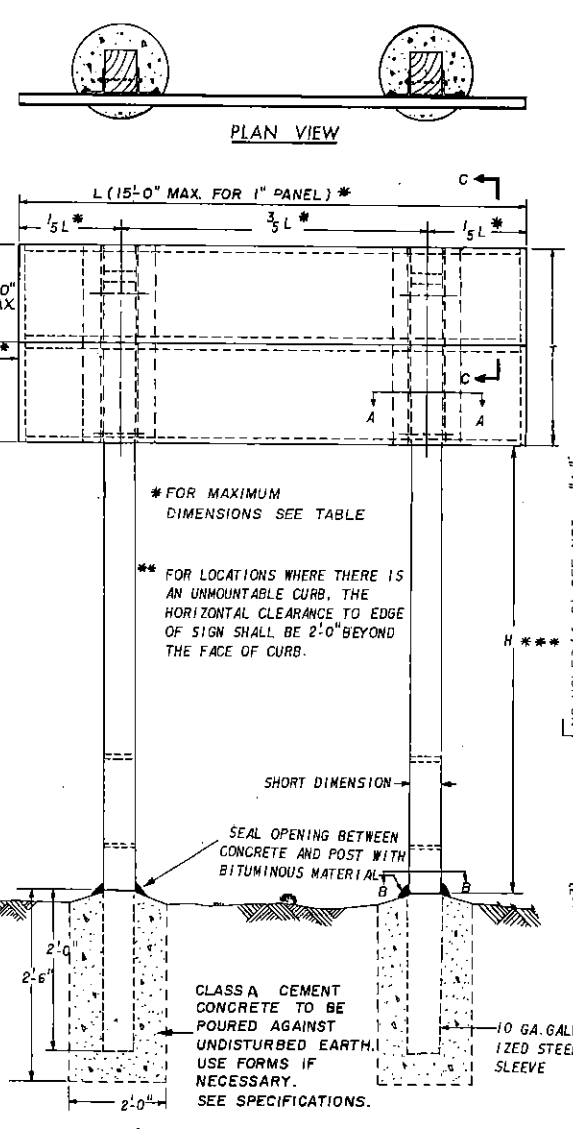
NOTE
*** "H" dimension used for entering post table is always the longest post. Use the same section for all posts.

L	H	2	3	4	5	6	7	8	9	10	11	12
6	4x6	4x6	4x6	4x6	4x6	4x6	4x6	4x6	4x6	4x6	4x6	4x6
8	4x6	4x6	4x6	4x6	4x6	4x6	4x6	4x6	4x6	4x6	4x6	4x6
10	4x6	4x6	4x6	4x6	4x6	4x6	4x6	4x6	4x6	4x6	4x6	4x6
12	4x6	4x6	4x6	4x6	4x6	4x6	4x6	4x6	4x6	4x6	4x6	4x6
6	4x6	4x6	4x6	4x6	4x6	4x6	4x6	4x6	4x6	4x6	4x6	4x6
8	4x6	4x6	4x6	4x6	4x6	4x6	4x6	4x6	4x6	4x6	4x6	4x6
10	4x6	4x6	4x6	4x6	4x6	4x6	4x6	4x6	4x6	4x6	4x6	4x6
12	4x6	4x6	4x6	4x6	4x6	4x6	4x6	4x6	4x6	4x6	4x6	4x6
6	4x6	4x6	4x6	4x6	4x6	4x6	4x6	4x6	4x6	4x6	4x6	4x6
8	4x6	4x6	4x6	4x6	4x6	4x6	4x6	4x6	4x6	4x6	4x6	4x6
10	4x6	4x6	4x6	4x6	4x6	4x6	4x6	4x6	4x6	4x6	4x6	4x6
12	4x6	4x6	4x6	4x6	4x6	4x6	4x6	4x6	4x6	4x6	4x6	4x6
6	4x6	4x6	4x6	4x6	4x6	4x6	4x6	4x6	4x6	4x6	4x6	4x6
8	4x6	4x6	4x6	4x6	4x6	4x6	4x6	4x6	4x6	4x6	4x6	4x6
10	4x6	4x6	4x6	4x6	4x6	4x6	4x6	4x6	4x6	4x6	4x6	4x6
12	4x6	4x6	4x6	4x6	4x6	4x6	4x6	4x6	4x6	4x6	4x6	4x6
6	4x6	4x6	4x6	4x6	4x6	4x6	4x6	4x6	4x6	4x6	4x6	4x6
8	4x6	4x6	4x6	4x6	4x6	4x6	4x6	4x6	4x6	4x6	4x6	4x6
10	4x6	4x6	4x6	4x6	4x6	4x6	4x6	4x6	4x6	4x6	4x6	4x6
12	4x6	4x6	4x6	4x6	4x6	4x6	4x6	4x6	4x6	4x6	4x6	4x6
6	4x6	4x6	4x6	4x6	4x6	4x6	4x6	4x6	4x6	4x6	4x6	4x6
8	4x6	4x6	4x6	4x6	4x6	4x6	4x6	4x6	4x6	4x6	4x6	4x6
10	4x6	4x6	4x6	4x6	4x6	4x6	4x6	4x6	4x6	4x6	4x6	4x6
12	4x6	4x6	4x6	4x6	4x6	4x6	4x6	4x6	4x6	4x6	4x6	4x6

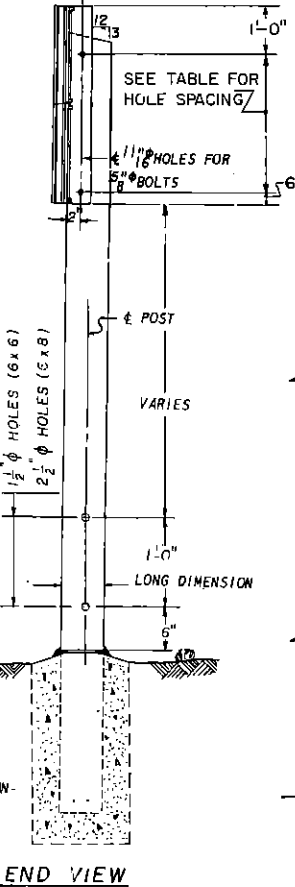
L	H	2	3	4	5	6	7	8
6	4x6	4x6	4x6	4x6	4x6	4x6	4x6	4x6
8	4x6	4x6	4x6	4x6	4x6	4x6	4x6	4x6
10	4x6	4x6	4x6	4x6	4x6	4x6	4x6	4x6
12	4x6	4x6	4x6	4x6	4x6	4x6	4x6	4x6
6	4x6	4x6	4x6	4x6	4x6	4x6	4x6	4x6
8	4x6	4x6	4x6	4x6	4x6	4x6	4x6	4x6
10	4x6	4x6	4x6	4x6	4x6	4x6	4x6	4x6
12	4x6	4x6	4x6	4x6	4x6	4x6	4x6	4x6
6	4x6	4x6	4x6	4x6	4x6	4x6	4x6	4x6
8	4x6	4x6	4x6	4x6	4x6	4x6	4x6	4x6
10	4x6	4x6	4x6	4x6	4x6	4x6	4x6	4x6
12	4x6	4x6	4x6	4x6	4x6	4x6	4x6	4x6
6	4x6	4x6	4x6	4x6	4x6	4x6	4x6	4x6
8	4x6	4x6	4x6	4x6	4x6	4x6	4x6	4x6
10	4x6	4x6	4x6	4x6	4x6	4x6	4x6	4x6
12	4x6	4x6	4x6	4x6	4x6	4x6	4x6	4x6
6	4x6	4x6	4x6	4x6	4x6	4x6	4x6	4x6
8	4x6	4x6	4x6	4x6	4x6	4x6	4x6	4x6
10	4x6	4x6	4x6	4x6	4x6	4x6	4x6	4x6
12	4x6	4x6	4x6	4x6	4x6	4x6	4x6	4x6

T	SPACES
2	1 AT 6"
3	2 AT 9"
4	2 AT 15"
5	3 AT 14"
6	3 AT 18"
7	4 AT 16 1/2"
8	6 AT 13"
9	6 AT 15"
10	8 AT 12 3/4"
11	8 AT 14 1/4"
12	8 AT 15 3/4"

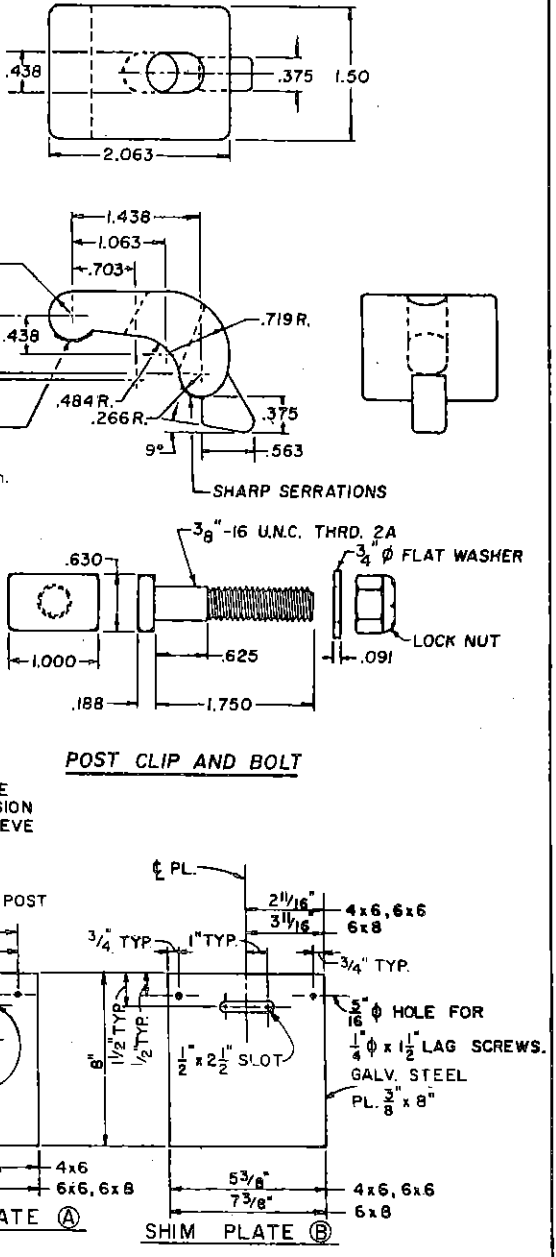
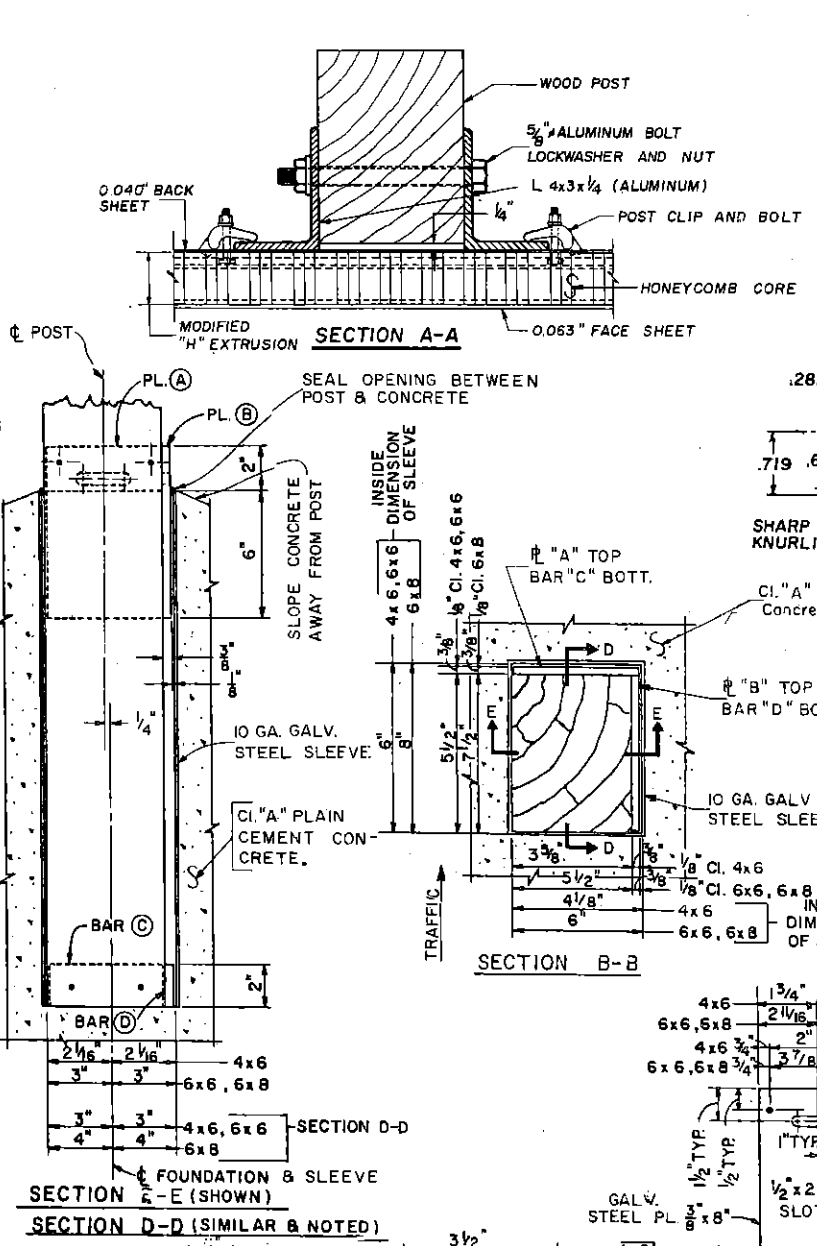
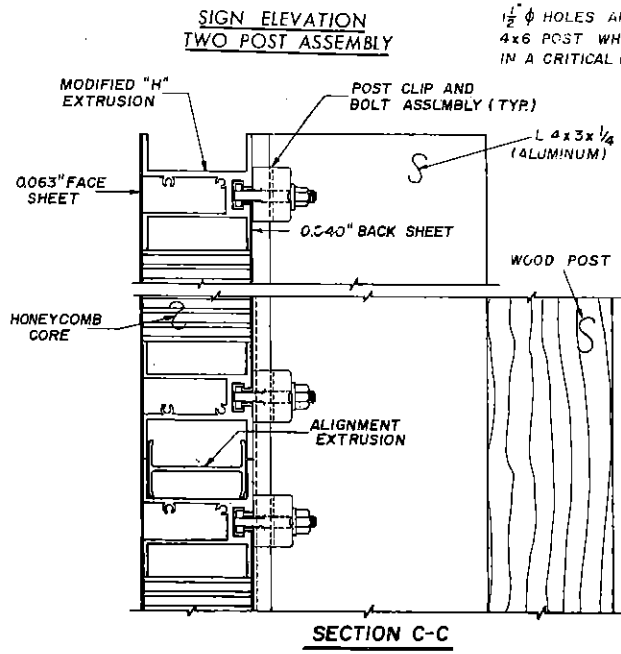
PROCEDURE
 ENTER TABLES WITH MAXIMUM VALUE OF "H" FOR INSTALLATION CONSIDERED AND SELECT POST SECTION. FOR SIGN SIZES BETWEEN THOSE GIVEN IN TABLES, USE THE NEXT HIGHEST FOOT.
 EXAMPLE: L=11'-6" T=5'-6"
 USE L=12'-0" T=6'-0"



Post Signs	1" Panel	2 1/2" Panel
2 Post Signs	1/5 L 3'-0"	4'-0"
	3/5 L 9'-0"	12'-0"
	L 15'-0"	20'-0"
3 Post Signs	1/8 L 3'-0"	3'-9"
	3/8 L 9'-0"	11'-3"
	L 24'-0"	30'-0"



NOTE A
 1/2" φ HOLES ARE REQUIRED IN 4x6 POST WHEN IT IS MOUNTED IN A CRITICAL EXPOSED AREA



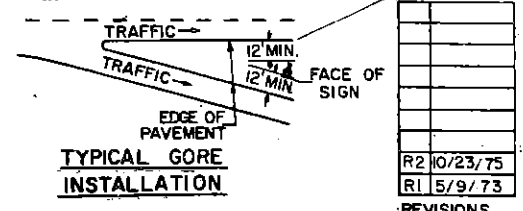
GENERAL NOTES
 FOR DETAILS OF LAMINATED PANEL SIGN SEE TRAFFIC CONSTRUCTION STANDARD 7705A.

Commonwealth of Pennsylvania
DEPARTMENT OF TRANSPORTATION
BUREAU OF TRAFFIC ENGINEERING

POST MOUNTED SIGNS, TYPE E
(LAMINATED PANEL SIGN)

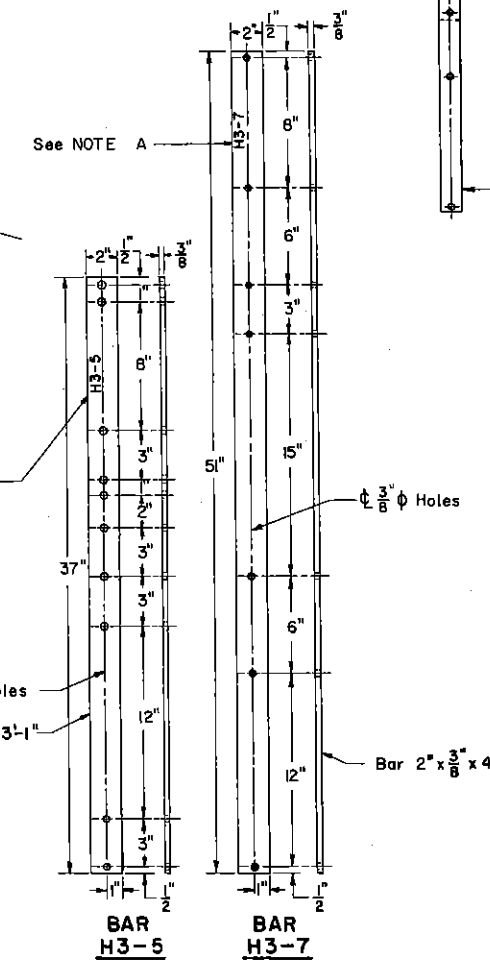
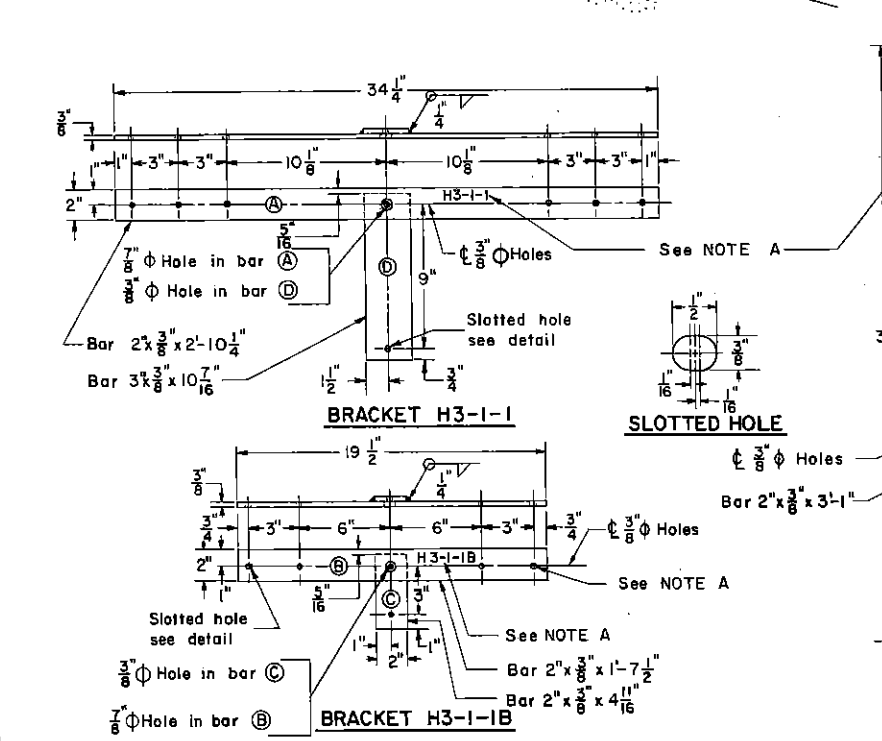
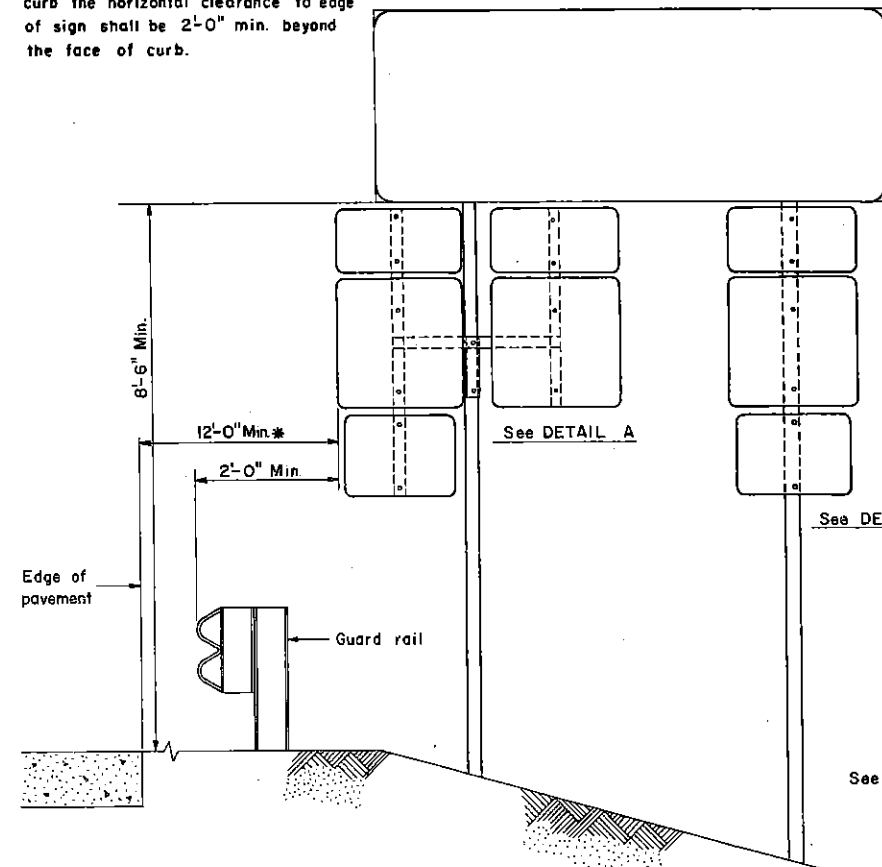
Recommended	Approved	Sht. 2 of 2
Director, Bureau of Traffic Engineering	Deputy Chief Highway Engineer	TC 7702 E

rev. date 4-24-72

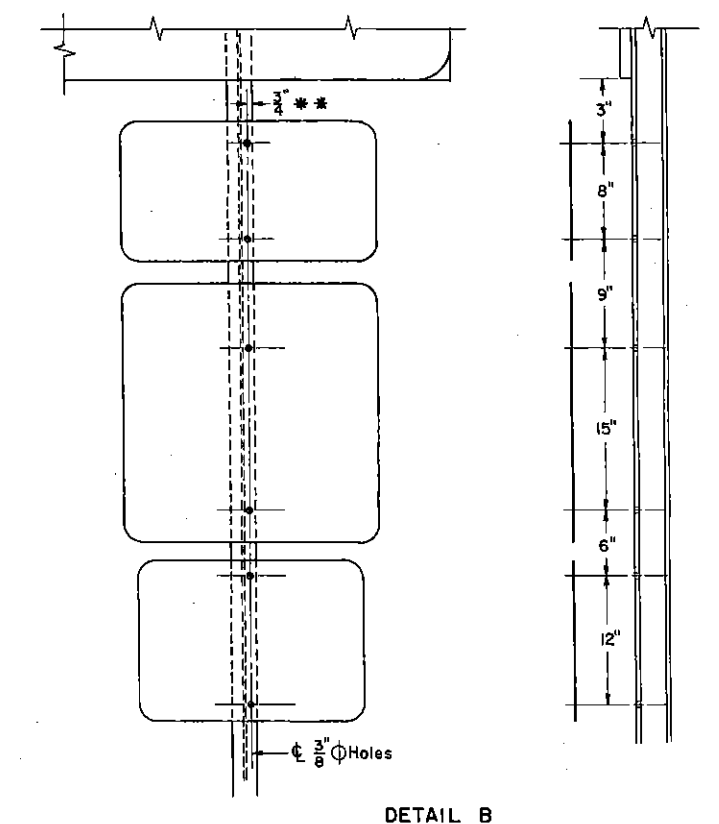
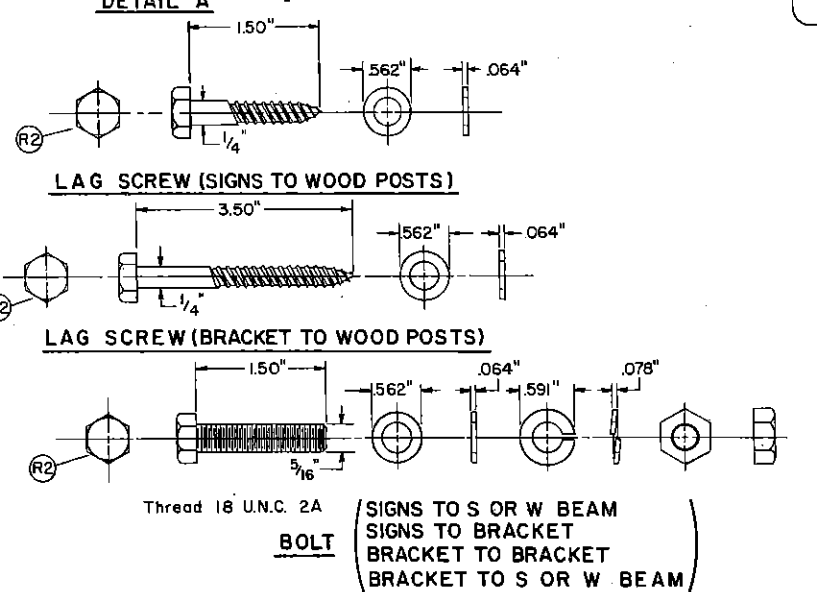
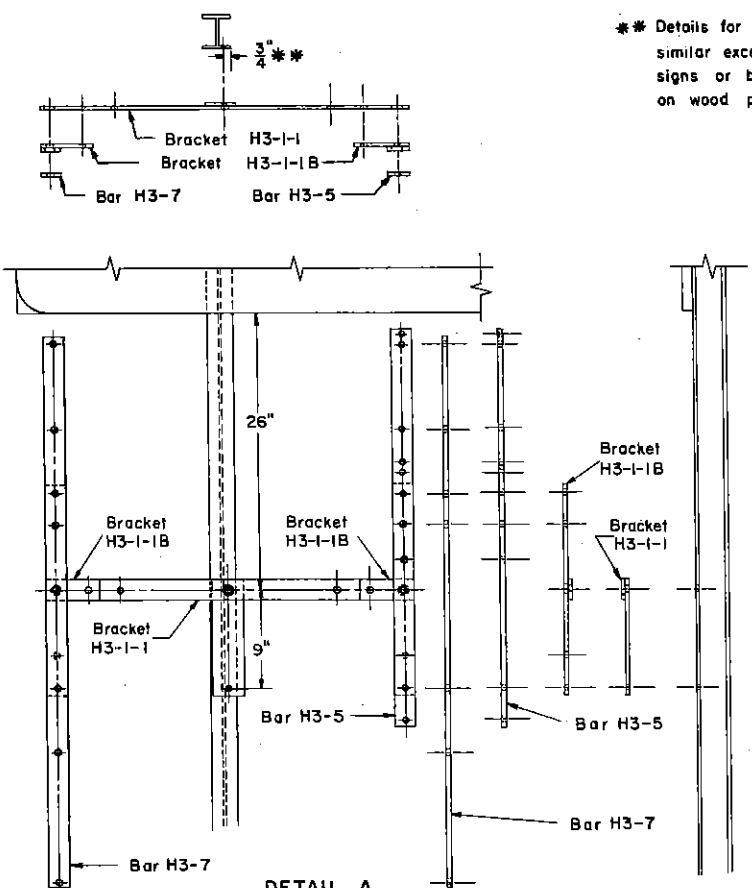


R2	10/23/75
R1	5/9/73

* For locations where there is an unmountable curb the horizontal clearance to edge of sign shall be 2'-0" min. beyond the face of curb.



NOTE A
Stamp numbers in 3/8" high letters in positions as shown.



NOTE:
• All material shall conform to the appropriate specification as outlined in Penn DOT Form 408 and/or 409.
• A flat washer shall be used on the face of all signs.

DISTRICT	COUNTY	ROUTE	SECTION	SHEET
REVISION NUMBER	REVISIONS	DATE	BY	

REVISIONS
R2 3-4-76
R1 6-29-73

Commonwealth of Pennsylvania
DEPARTMENT OF TRANSPORTATION
BUREAU OF TRAFFIC ENGINEERING

POST MOUNTED SIGNS, TYPE F

Recommended	Approved	SM. 101
Director, Bureau of Traffic Engineering	Deputy Chief Highway Engineer	TG 7702

3/6/78