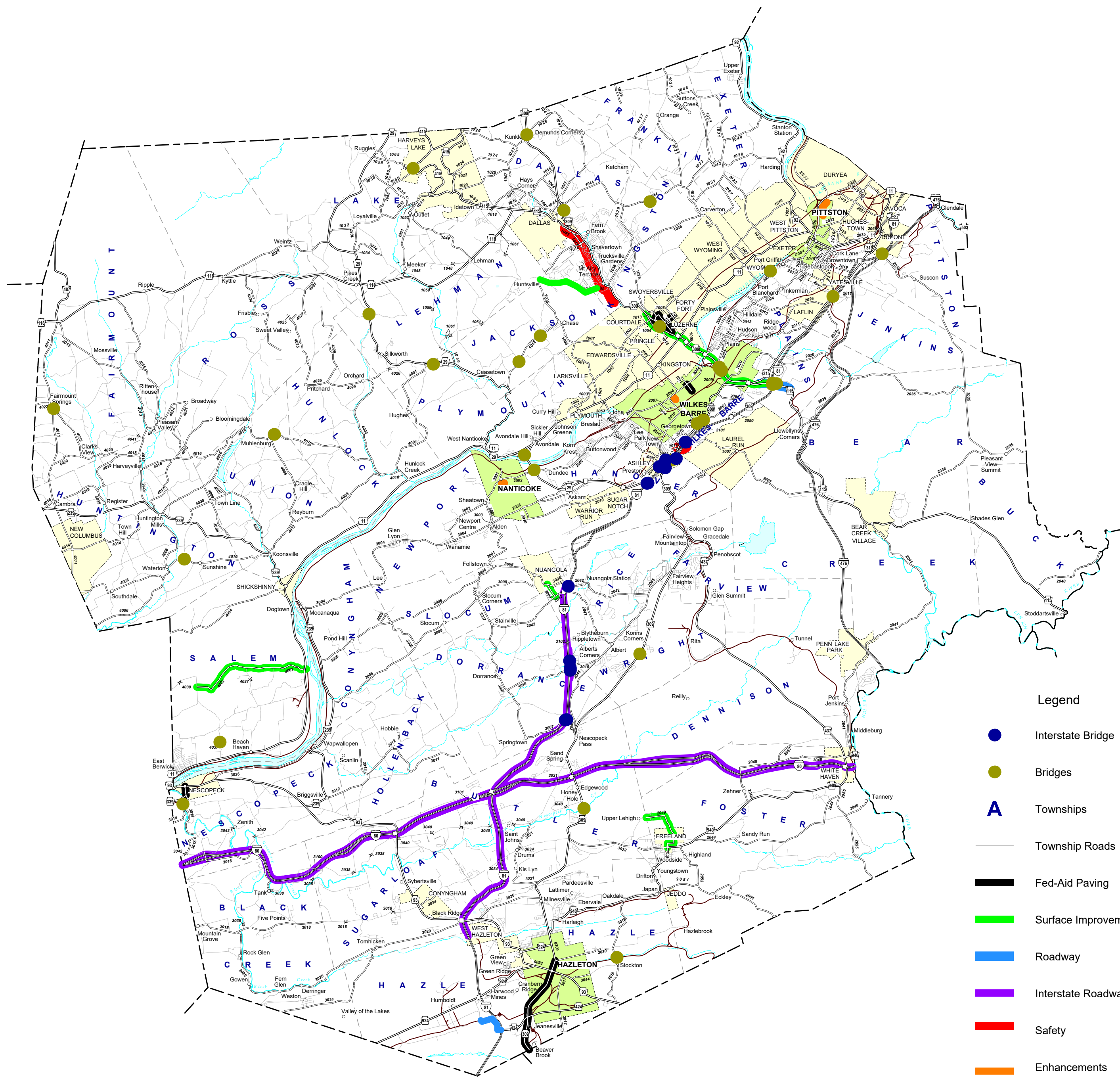


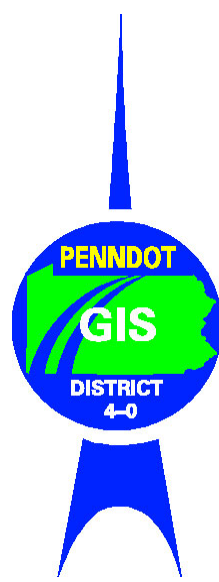
LUZERNE COUNTY

2023 Construction Season



Legend

- Interstate Bridge
- Bridges
- A Townships
- Township Roads
- Fed-Aid Paving
- Surface Improvements
- Roadway
- Interstate Roadway
- Safety
- Enhancements
- Railroads
- Cities
- Boroughs



Shown on these maps are projects started in previous construction seasons and projects that will be bid this calendar year but may span beyond the 2023 construction season.

CRACK SEALING & LINE PAINTING
CRACK SEALING & LINE PAINTING WILL BE PERFORMED ON VARIOUS STATE ROUTES THROUGHOUT THE COUNTY
GUIDE RAIL
DAMAGED GUIDE RAIL AND MEDIAN BARRIER WILL BE REPAIRED AT VARIOUS LOCATIONS THROUGHOUT THE COUNTY
TREE TRIMMING
TREE TRIMMING WILL BE PERFORMED AT VARIOUS LOCATIONS ON STATE ROUTES THROUGHOUT THE COUNTY
BRIDGE MAINTENANCE
BRIDGE MAINTENANCE ACTIVITIES WILL BE PERFORMED ON VARIOUS BRIDGES THROUGHOUT THE COUNTY
SAFETY IMPROVEMENTS
SIGNING AND LIGHTING WILL BE UPGRADED AT VARIOUS SITES THROUGHOUT THE COUNTY
PRODUCED BY: GEOGRAPHIC INFORMATION DIVISION BUREAU OF PLANNING & RESEARCH FOR FURTHER INFORMATION OR COMMENTS CONTACT: GIS COORDINATOR AT (570)-963-3312

INTERSTATE ROADWAY		
S.R.	ECMS	DESCRIPTION
80	116735	EB/WB Concrete Pavement Repairs
80	117837	EB/WB Concrete Pavement Repairs
81	67443	Dorrance Bridges
81	116735	NB/SB Concrete Pavement Repairs
81	117837	NB/SB Concrete Pavement Repairs
3007	67443	Dorrance Bridges
3010	67443	Dorrance Bridges
ROADWAY PROJECTS		
S.R.	ECMS	DESCRIPTION
115	9128	SR 115 over I-81, Plains Twp.
309	9128	SR 115 over I-81, Plains Twp.
424	70467	Extension of SR 424 to SR 924, Hazle Twp.
ENHANCEMENTS		
S.R.	ECMS	DESCRIPTION
2002	105050	Nanticoke Streetscape
2006	111473	North Main Street Streetscape, Pittston City
2007	111478	Wilkes University Pedestrian Safety Imp PH III
SAFETY PROJECTS		
S.R.	ECMS	DESCRIPTION
309	110327	SR 309 Signal Corridor, Dallas Borough, Kingston & Dallas Twps.
8013	85008	Blackman Street Southbound Ramp, Wilkes-Barre Twp.

BRIDGES		
S.R.	ECMS	DESCRIPTION
29	101386	over Pikes Creek, Lehman Twp.
29	112837	over Susquehanna River, Hanover Twp.
29	112837	over SR 11 & Ramp SR 8027, Plymouth Twp.
29	115736	over Pikes Creek, Plymouth Twp.
115	9128	over SR 8015, Plains Twp.
115	9128	over NB/SB I-81, Plains Twp.
115	9128	over NB/SB I-81, Plains Twp.
309	9174	over Branch Toby Creek, Dallas Borough
309	67283	over Leonards Creek, Dallas Twp.
309	67366	NB/SB over SR 2022 & NS, Wilkes-Barre City
309	67366	NB/SB over Wilkes-Barre Blvd, Wilkes-Barre City
309	93006	over Nescopeck Creek, Butler Twp.
309	115729	over Branch Wapwallopen Creek, Wright Twp.
315	115732	over RBMN, Laffin Borough
415	115732	over Inlet to Harvey's Lake, Harvey's Lake Borough
1012	57671	over Harvey's Creek, Jackson Twp.
1012	57671	over Tributary Harvey's Creek, Jackson Twp.
1013	115732	over Tobys Creek, Luzerne Borough
1044	96722	over Abraham's Creek, Kingston Twp.
2004	112835	over LCRA, Jenkins Twp.
2007	93104	over Branch Spring Run Creek, Wilkes-Barre City
2035	113881	over I-81, Pittston Twp.
3014	8868	over Nescopeck Creek, Nescopeck Twp.
3019	79534	over Hazle Creek, Hazle Twp.
4010	67290	over Tributary Huntington Creek, Huntington Twp.
4016	67329	over Rebyrn Creek, Union Twp.
4033	67290	over Branch Pine Creek, Fairmount Twp.
4037	115729	over Beach Haven Creek, Salem Twp.
6309	115736	over Ashley Park, Ashley Borough
6309	115736	over Branch Solomons Creek, Wilkes-Barre Twp.

FEDERAL-AID PAVING			
S.R.	ECMS	DESCRIPTION	MILES
309	117976	Hazleton-McAdoo Hwy./Church Street Paving	5.38
339	117976	Broad Street Resurfacing, Nescopeck Borough	0.32
1008	102563	Main Street, Luzerne & Swoyersville Borough	0.75
1011	117976	North Street Resurfacing, Wilkes-Barre City	0.30
1015	102563	Bennett Street, Luzerne Borough	0.85
1029	102563	North Street, Luzerne Borough	0.14
TOTAL			7.74
SURFACE IMPROVEMENTS			
S.R.	ECMS	DESCRIPTION	MILES
309	114153	North Cross Valley Expressway, Resurfacing	11.33
2049	113423	Birkbeck Street, Foster Twp. & Freeland Borough	2.03
3009	118756	Church Road Resurfacing, Rice Twp. & Nuangola Borough	0.51
4002	118756	Mingle Inn Road Resurfacing, Salem Twp.	4.37
CR-16	8608	Hillside/Huntsville Road, Jackson & Kingston Twps.	3.07
TOTAL			21.31
INTERSTATE BRIDGES			
S.R.	ECMS	DESCRIPTION	MILES
81	67443	NB/SB over SR 3007 Blue Ridge Trail, Dorrance Twp.	
81	67443	NB over SR 3010 Alberdeen Road, Dorrance Twp.	
81	67443	NB over Big Wapwallopen Creek, Dorrance Twp.	
81	67443	over Tributary Wapwallopen Creek, Dorrance Twp.	
81	114154	NB/SB over SR 29 Ramp, Hanover Twp.	
81	114154	NB over SR 6309, Hanover Twp.	
81	114154	SB over SR 2003, Ashley Borough	
81	114154	NB/SB over LCRA, Ashley Borough	
81	114154	NB/SB over Johnson & Allan Streets, Wilkes-Barre Twp.	
81	115727	over Outlet Nuangola Lake, Rice Twp.	