



June 2021 Newsletter

THANKS FOR YOUR FEEDBACK!

Thank you to all who submitted public comments on the draft PennDOT Pathways PEL Study

The on-demand virtual public meeting for the draft Pathways Planning and Environmental Linkages (PEL) study was live from April 29, 2021, to June 1, 2021. In addition to the public meeting site, we held a Telephone Town Hall on May 25, 2021.



There were more than 3,000 visits to the public meeting site, more than 100 attended the Telephone Town Hall and collectively 300 comments were submitted! Your suggestions and input are critical to helping us identify near- and long-term funding solutions that best meet the needs of Pennsylvanians.

WHAT DID WE HEAR?

Concerns

- Potential traffic congestion caused by tolls
- Financial hardships restricting ability to pay tolls
- Portion of funding flagged for state police



Support

- Generating funding from those who use roads and bridges the most



Suggestions

- Electric vehicle fees
- Federal funding



Opposition

- Tolls
- Tax increases



THE NEED FOR TRANSPORTATION FUNDING

“We need a big and bold program to modernize our nation's crumbling infrastructure and we applaud the Biden administration for making infrastructure a top priority [...] Properly done, a major investment in infrastructure today is an investment in the future, and like a new home, should be paid for over time - say 30 or more years - by the users who benefit from the investment.”

U.S. Chamber of Commerce

in response to the President's American Jobs Plan announcement in early 2021

WHAT'S NEXT?

We are working to review the comments received and incorporate the input into the PEL Study document. The Final PEL Study will be posted to the website later this summer.

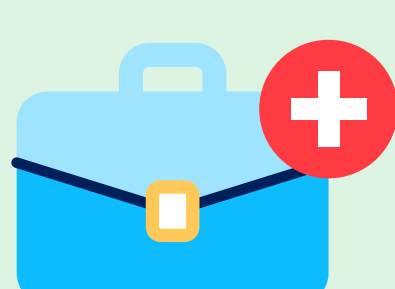
In the meantime, the Major Bridge P3 Initiative's candidate bridge projects are undergoing environmental reviews which include analyzing potential impacts of drivers avoiding the tolls by traveling on alternative routes, impacts to low-income and minority populations, and other factors. We will hold public meetings to discuss these elements, providing further opportunities for public engagement. This initiative, the first under the PennDOT Pathways Program, was developed in response to one of the early findings of the PEL study – that tolling of major bridges in need of replacement or rehabilitation is a potential viable near-term funding solution.

PEL Lookahead



DID YOU KNOW?

The design, construction and maintenance of transportation infrastructure in Pennsylvania supports **approximately 183,000 full time jobs** across the state! An **additional 2.7 million full-time jobs** in tourism, retail, agriculture and manufacturing rely on our transportation network.



TRIP: A National Transportation Research Nonprofit, May 2021
https://tripnet.org/wp-content/uploads/2020/04/TRIP_Fact_Sheet_PA.pdf

TRANSPORTATION TRIVIA!

In the United States, Pennsylvania is the state with the highest number of which of the following?

- A** Covered bridges
- B** Miles of railroads
- C** Commercial airports

SEE THE ANSWER

For more information about PennDOT Pathways, visit our website at penn.dot.gov/funding.

Want to share information on your social or digital platforms? Find image, video and other resources in the **Funding Media Center**.

CONTACT US

Website Comment Form: [Click Here](#)



Email:
PennDOTPathways@pa.gov



Hotline:
 717-325-6129

You are receiving this email as a partner for the PennDOT Pathways program. To opt out of PennDOT Pathways e-newsletters, please reply to the project email at PennDOTPathways@pa.gov.

