

# Pavement Preservation (When, Where and How)

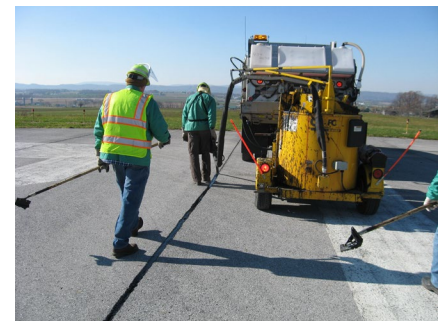
## Maximizing Assets - Extending the Life of Pavement

[Pavement Preservation \(When, Where and How\)](#) is a multi-faceted combination of strategies to provide and maintain serviceable roadways. Pavement preservation consists of activities that maximize return on roadway investments, enhance safety, extend pavement life, improve functional performance and increase user satisfaction. Pavement Preservation (When, Where and How) is a Federal Highway Administration (FHWA) Every Day Counts Round 4 (EDC-4) innovation that Pennsylvania championed.



## What are the benefits?

- **Extended** pavement life
- **Lower** annual **maintenance costs** over the life of the pavement
- More **effective use of resources** – time, money and materials
- Pavement condition **meets** drivers' **expectations**



## How does it work?

Pavement Preservation is key component of [PennDOT's Transportation Asset Management Plan \(TAMP\)](#). Asset management-based decision-making is crucial to fulfilling PennDOT's mission to provide a sustainable transportation system and quality services. Asset management is a data-based decision framework applied to project selection that helps achieve and sustain the desired state of good repair for transportation assets by providing decision tools to select the proper treatment at the right time. This methodology allows assets to be managed to specific condition targets and to the lowest practical life-cycle cost (LLCC).



## How do I learn more?

To learn more about this innovation, visit [www.penndot.gov/stic](http://www.penndot.gov/stic) or email [penndotstic@pa.gov](mailto:penndotstic@pa.gov).