

Design-Build Traffic Control Plans

Streamlining Construction Plans

Design-Build Traffic Control Plans (DBTCP) are an innovation that improves project delivery by exploring ways to provide greater contractor flexibility in constructing the project. The expanded use of DBTCP establishes procedures for use on minor, moderate, and complex projects. DBTCP is an adaptation of Design-Build, which was a Federal Highway Administration (FHWA) Every Day Counts Round 1 (EDC-1) innovation.

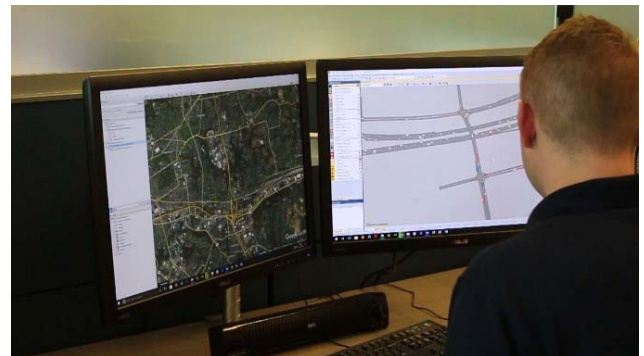
What are the benefits?

- **Greater flexibility, improved efficiency, and better schedule control** during the design and construction phases of a project
- **Contractor and design consultant work closely on the final design** of the traffic control plan
- **Reduced need for change orders** because the construction team is responsible for the **completeness and quality** of the final plan



How does it work?

Current policy and procedures allow the low-bid contractor to finalize the traffic control plan based on construction phasing and schedule. In contrast to traditional Design-Bid-Build (DBB) projects, this project delivery innovation allows the contractor and designer to work together to develop traffic control plans that are more responsive to construction phasing and schedules.



How do I learn more?

To learn more about this innovation, visit www.penndot.pa.gov/stic or email penndotstic@pa.gov.