

Virtual Public Plans Displays PennDOT District 8

- How do we make it easier for the public to be involved in our projects?
- Limited public involvement, lost in-person public outreach opportunities due to pandemic.
- Virtual plans displays increased public involvement.

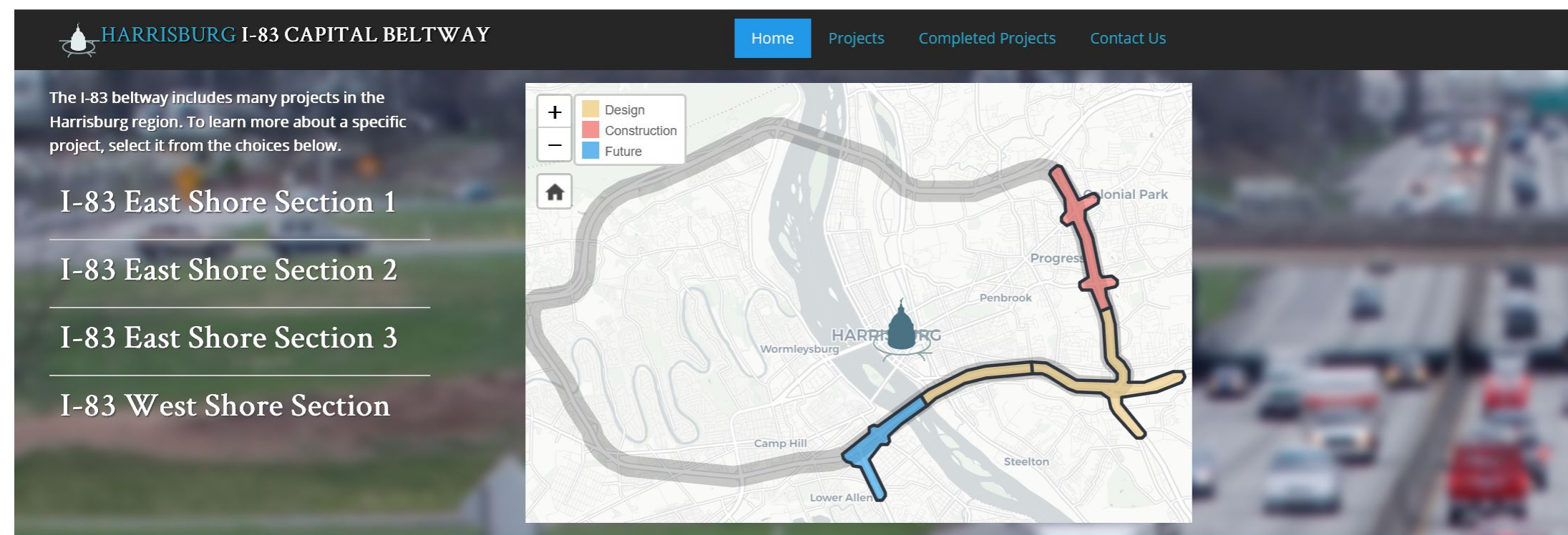


Contact Information

Dave Thompson
717-418-5018
dmthompson@pa.gov

District 8's Pre-COVID Outreach

- Like most districts, District 8's use of technology to inform the public about transportation projects goes back years, but most involved major projects in conjunction with in-person outreach.
- In-person outreach a major focus.



Welcome to the I-83 Capital Beltway Project

The Harrisburg Capital Beltway encircles the City of Harrisburg, which is the State Capital of Pennsylvania, and surrounding municipalities. The Beltway includes a section of Interstate 81 (I-81), a section of Interstate 83 (I-83), and Route 581, and is a limited-access facility. The Capital Beltway is vital to the economy of the Harrisburg region, and is an important hub in the transportation network of the northeastern United States. This website focuses on the I-83 section of the Beltway, which extends from a junction with I-81 northeast of Harrisburg to the interchange with Route 581 to the south of Harrisburg. An I-83 Master Plan was prepared by the Pennsylvania Department of Transportation (PennDOT) in 2003 for this section of the Capital Beltway to identify, plan, and program future transportation



District 8 Executive Mike Keiser speaks to citizens during a public hearing in the fall of 2019.

District 8's Pre-COVID Outreach

- The district typically presented plans displays for public review at municipal offices.
- Inconvenient – plans available only during set hours and days.
- Resulted in limited public involvement, especially with smaller projects.

BUSINESS HOURS		
	A.M.	P.M.
MONDAY	8:00	5:30
TUESDAY	8:00	5:30
WEDNESDAY	8:00	5:30
THURSDAY	8:00	5:30
FRIDAY	8:00	5:30
SATURDAY	9:00	12:30
SUNDAY	CLOSED	

COVID-19 Called For A New Approach

“The big change came about two months into the pandemic when we realized there were projects in the pipeline that needed public involvement and having in-person plans displays or public meetings was going to be out of the question indefinitely. The district pivoted quickly to virtual public plans displays, focusing on projects with 2021 let dates.”

- Sharon Okin, District 8 Environmental Manager



Sharon Okin, District 8 Environmental Manager

Getting Started: Tapping Resources

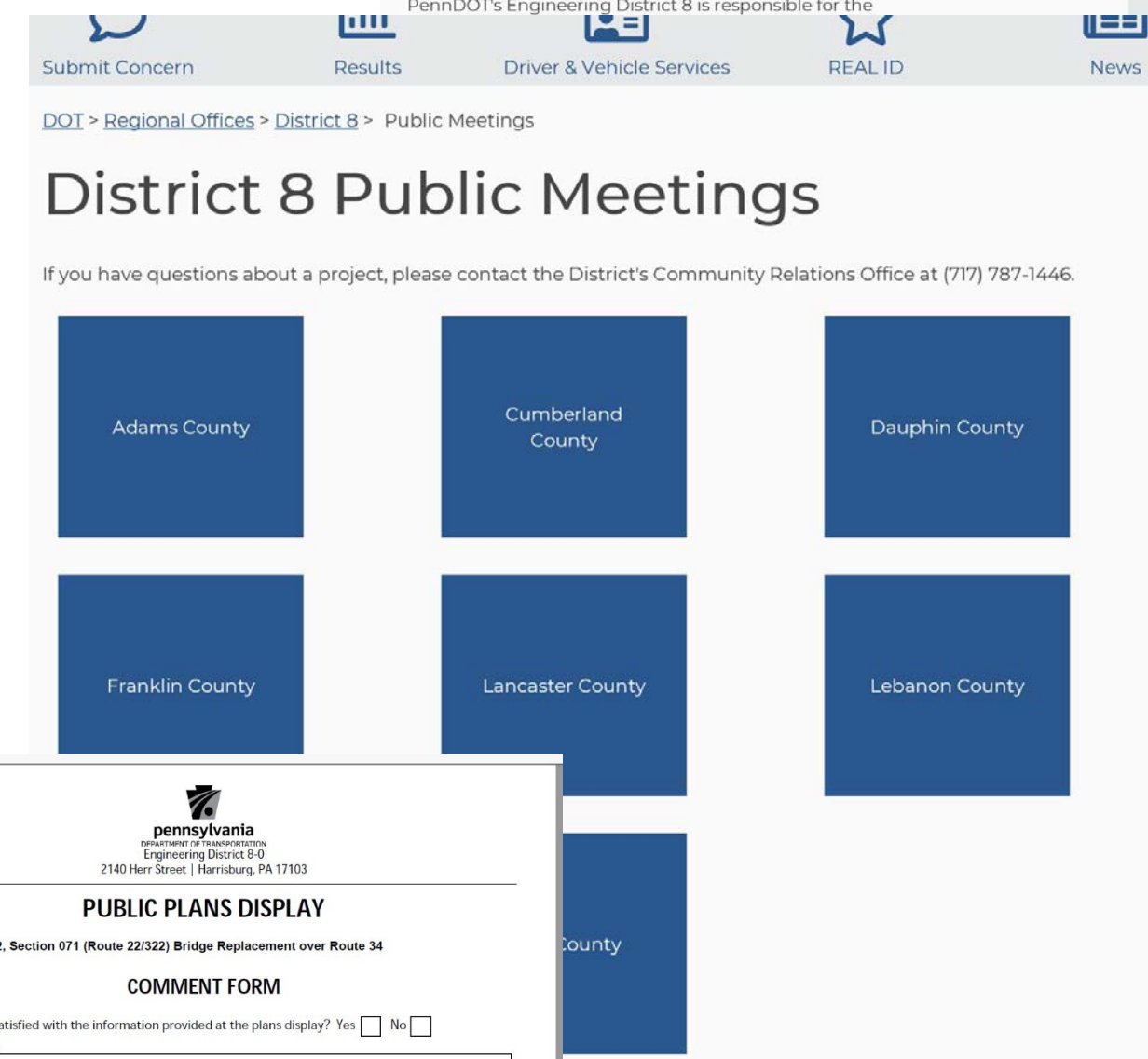
- Planning Team: Design, IT, Press Office
- Skype meetings with planning team. Follow-ups.
- No need to reinvent the wheel: guidance already created, in use in other districts.
- Invaluable guidance provided by Central Communications Office Digital Director Larissa Newton.
- Assistance and advice from District 1 Press Officer Jillian Harry.
- Adapted processes.



Larissa Newton, PennDOT Communications Office digital director, top photo, and Jillian Harry, District 1 press officer, bottom photo, provided valuable guidance and support. Thank you both!

Getting Started: Putting Plan in Action

- Virtual Public Meetings page organized by county on district website.
- Templates created for publishing plans displays to the district website.
- Timeline set for project manager submitting templates to IT department for posting to website.
- Comment forms: generic or custom.
- Comment forms: mailed or emailed.



pennsylvania
DEPARTMENT OF TRANSPORTATION
Engineering District 8-0
2140 Herr Street | Harrisburg, PA 17103

PUBLIC PLANS DISPLAY

PROJECT: Route 22, Section 071 (Route 22/322) Bridge Replacement over Route 34

COMMENT FORM

1. Were you satisfied with the information provided at the plans display? Yes No

Comments:

2. Are you aware of any sensitive features (i.e., socioeconomic resources, natural resources, historic resources, public facilities, etc.) within the project area?

Comments:

3. Are there any special features on your property that should be identified on the plans? (i.e., utility line not noted on plans, leases or easements, septic systems, etc.)

Comments:

4. Do you have any comments or concerns with the construction staging?

Comments:

5. Do you have any special concerns regarding impacts from the proposed construction such as possible impacts to your property or business?

Comments:

Getting Started: Website, Press Release

- Press office uses project overview to draft press releases announcing plans viewable on the district website.
- Press release issued once project available for public viewing. Release also posted to district news page.



For Immediate Release
September 16, 2020

PennDOT Announces Online Plans Display for Route 22/322 Bridge Replacement Project in Howe Township, near Newport in Perry County

Harrisburg, PA – The Pennsylvania Department of Transportation (PennDOT) invites the public to an online plans display regarding the Route 22 (Route 22/322) bridge replacement project. This project is located over Route 34 in Howe Township, Perry County roughly 1.5 miles to the northeast of Newport, PA. The purpose of this project is to address deficiencies on the bridges and provide continued access on Route 22/322 over Route 34.

The project consists of replacing the almost 60-year old westbound and eastbound bridges and repaving Route 22/322. The new bridges will carry two 12-foot lanes, 8-foot inside shoulders, and 10-foot outside shoulders in each direction. As part of this project, the westbound profile will be raised to increase the vertical clearance over Route 34. The bridge abutments will also be set back to allow for the widening of Route 34, if necessary, in the future. The pavement on Route 22/322 will be reconstructed between the interchange ramps and then overlaid to the project limits. Guiderail, signing, and pavement markings will be updated as part of this project.

The project is currently in design. Construction is anticipated to start in the fall of 2021 and is expected to be completed the fall of 2023.

In accordance with Governor Wolf's COVID-19 mitigation efforts, in plans display will be held online only. A digital version of the information will be available to view online for the next 30 days.

Information, including roadway and bridge plans and an interactive comment form, can be found by visiting the PennDOT District 8 website, www.penndot.gov/District8, clicking on Public Meetings listed under the Resources heading, and choosing the Perry County box then the tile marked [US 22/322 Over PA 34](#).

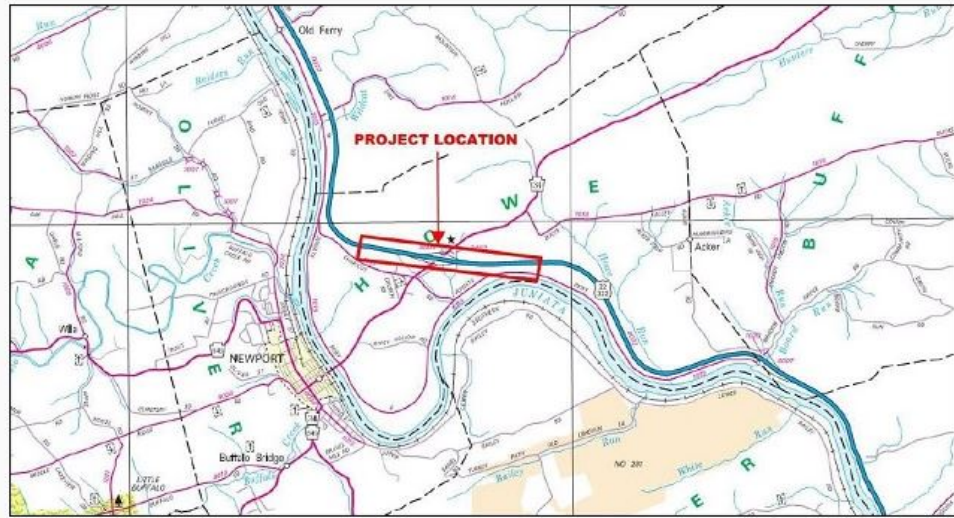
The purpose of the plans display is to introduce the project and receive public input regarding any questions or concerns with the project. It is also an opportunity for the public to review and comment on the project's potential effect upon Cultural Resources pursuant to the Advisory Council on Historic Preservation's 36 CFR Part 800 regulations implementing Section 106 of the National Historic Preservation Act.

The project documents can be made available in alternative languages or formats if

Results
Driver & Vehicle Services
REAL ID

[DOT](#) > [Regional Offices](#) > [District 8](#) > [Public Meetings](#) > [Perry County](#) > [US 22/322 Over PA 34](#)

US 22/322 Over PA 34



Overview

The Pennsylvania Department of Transportation (PennDOT) invites the public to an online plans display regarding the Route 22 (Route 22/322) bridge replacement project. This project is located over Route 34 in Howe Township, Perry County roughly 1.5 miles to the northeast of Newport, PA. The purpose of this project is to address deficiencies on the bridges and provide continued access on Route 22/322 over Route 34.

The project consists of replacing the almost 60-year old bridges and repaving Route 22/322. The new bridges will carry two 12-foot lanes, 8-foot inside shoulders, and 10-foot outside shoulders in each direction. As part of this project, the westbound profile will be raised to increase the vertical clearance over Route 34. The bridge abutments will also be set back to allow for the widening of Route 34, if necessary, in the future. The pavement on Route 22/322 will be reconstructed between the interchange ramps and then overlaid to the project limits. Guiderail, signing, and pavement markings will be updated as part of this project.

The project is currently in design. Construction is anticipated to start in the fall of 2021 and is expected to be completed the fall of 2023.

In accordance with Governor Wolf's COVID-19 mitigation efforts, in plans display will be held online only. A digital version of the information will be available to view online for 30 days.

Detour Information

Traffic will be maintained on existing SR 0022 during construction using two temporary crossovers as shown on displays.

Resources

- [Public Comment Form](#) (PDF, 2386 KB)
- [Project Description](#) (PDF, 115 KB)
- [Project Location Information](#) (PDF, 559 KB)
- [Preliminary Plan](#) (PDF, 738 KB)
- [Preliminary Traffic Control Plan](#) (PDF, 1276 KB)

Project Information

County: Perry
State Routes: SR 0022-071
Local Names: US 22/322 Over PA 34
Project Type: Bridge Replacement
Project Cost: \$18.9 Million (est.)
Proposed Project Start: Fall 2021
Proposed Project End: Fall 2023
Last Updated: August 2020

Contact Information

Derek Mitch, Project Manager
717-772-0034 | dmitch@pa.gov
David Thompson, Press Officer
717-787-1446 | dmthompson@pa.gov

Immediate Benefits: The Media

- Robust media coverage.
- Low-hanging fruit: Feeds media's need for easily accessible content.
- Some outlets run press releases word for word.

The screenshot shows a press release distribution platform interface. At the top, there are navigation links for 'About', 'Pricing', 'Distribution', 'Press Releases', 'Newsfres', 'Resources', and 'News Search'. A status bar indicates 'There were 950 press releases posted in the last 24 hours and 187,064 in the last 365 days.' Below this, a headline reads 'PennDOT Announces Online Plans Display for Route 1026 (Hopeland Road) Project Elizabeth Township, Lancaster County'. The article text states: 'Harrisburg, PA – The Pennsylvania Department of Transportation (PennDOT) invites the public to an online plan display... project is located with Route 322. The purpose of the safe and efficient... The project consists of concrete box culverts.' A second article headline reads 'PennDOT announces plans to replace 'deteriorating' bridge in Warrington Township'. The text for this article states: 'Harrisburg, PA – The Pennsylvania Department of Transportation (PennDOT) announces plans to replace a deteriorating bridge in Warrington Township... project is located over Cocalico Creek in East Cocalico Township, approximately 10 miles northwest of Harrisburg. The purpose of this project is to address structural deficiencies of the bridge and efficient crossing of Route 1030, Section 003 over Cocalico Creek in East Cocalico Township, Lancaster County. The project consists of a superstructure replacement along Route 1030 (Stevens Road) over Cocalico Creek in East Cocalico Township, Lancaster County.'



Immediate Benefits: Ease of Sharing, Viewing

- Municipalities spread the word via websites, social media and e-newsletters.
- Access 24/7 during 30-day display period



Current Projects



2021 Projects

PennDOT will be replacing the West High Street bridge at Logan and Mummau Parks. Informational updates will be posted here as they become available:

[PennDOT July 2, 2020 Press Release \(click here\)](#)

[PennDOT website for the project \(click here\)](#)

[Preliminary plans and project description \(click here\)](#)

Manheim Borough, Lancaster County, website

Immediate Benefits: Increased Public Involvement

- Although District 8 is early in the process, we've already seen a marked increase in public involvement.
- Concerns raised about one project resulted in modifications to detour plans.

**Pennsylvania Department of Transportation
Engineering District 8-0
SR 3017-030, Lancaster County (MPMS# 96330)
Church Street resurfacing and Box Culvert
PROJECT UPDATE**

Project Information

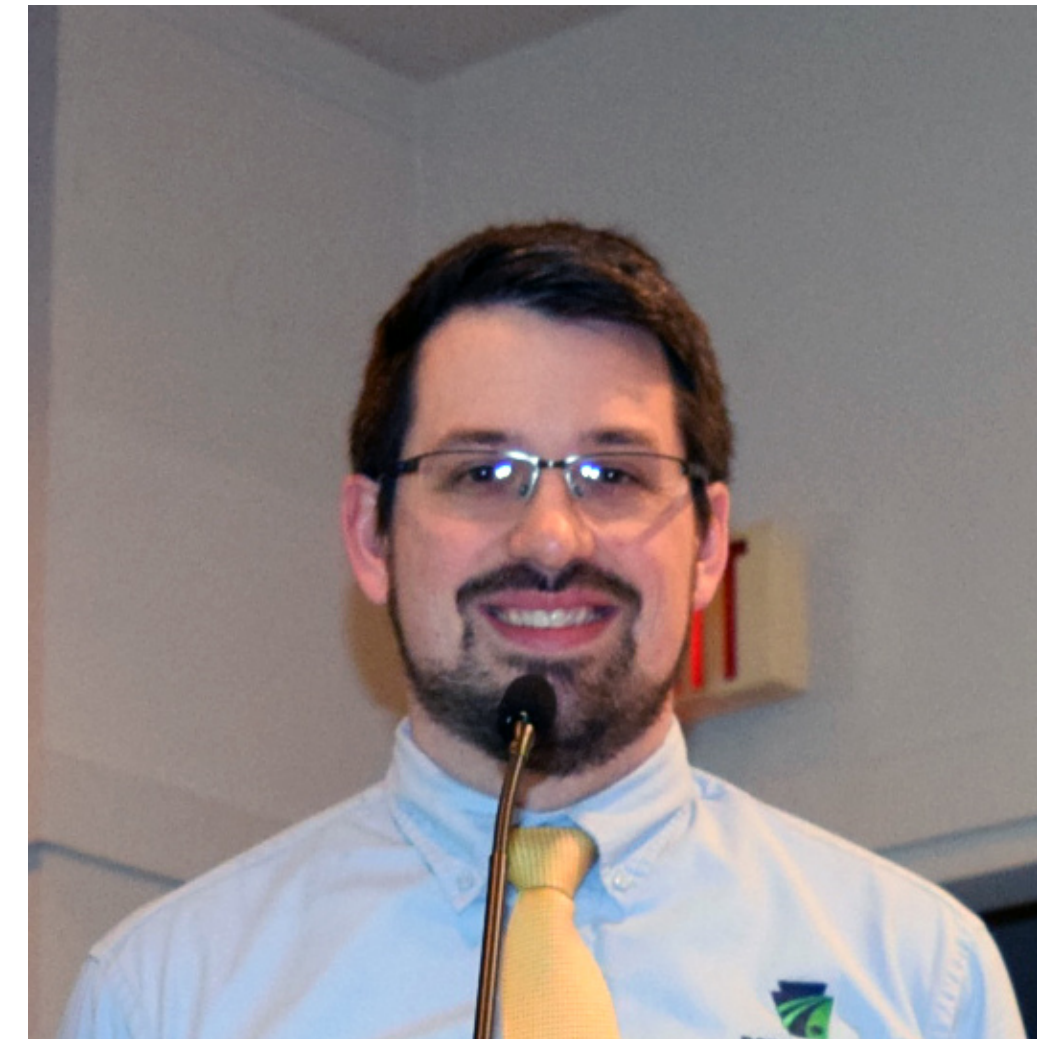
The SR 3017 Section 030 – Church Street Resurfacing project will total approximately 2.8 miles of roadway resurfacing. SR 3017, within the project limits, follows Stony Battery Road from SR 23 (Marietta Avenue) to the intersection with Church Street. From there, SR 3017 follows Church Street to SR 4020 (Main Street). The project limits are located within both East Hempfield and West Hempfield townships.

The purpose of the project is to improve the existing roadway and its components to increase the longevity of the transportation system for the motoring public and pedestrians.

The scope of the project will include base repair, milling and resurfacing the roadway, sidewalk construction from Station

“There is no good reason to not fully embrace virtual outreach. We’ve removed barriers to people contributing input to our projects.”

Derek Mitch, District 8 Assistant Bridge Engineer/Senior Project Manager



Derek Mitch, District 8 Assistant Bridge Engineer/Senior Project Manager