

Storeroom Barrier

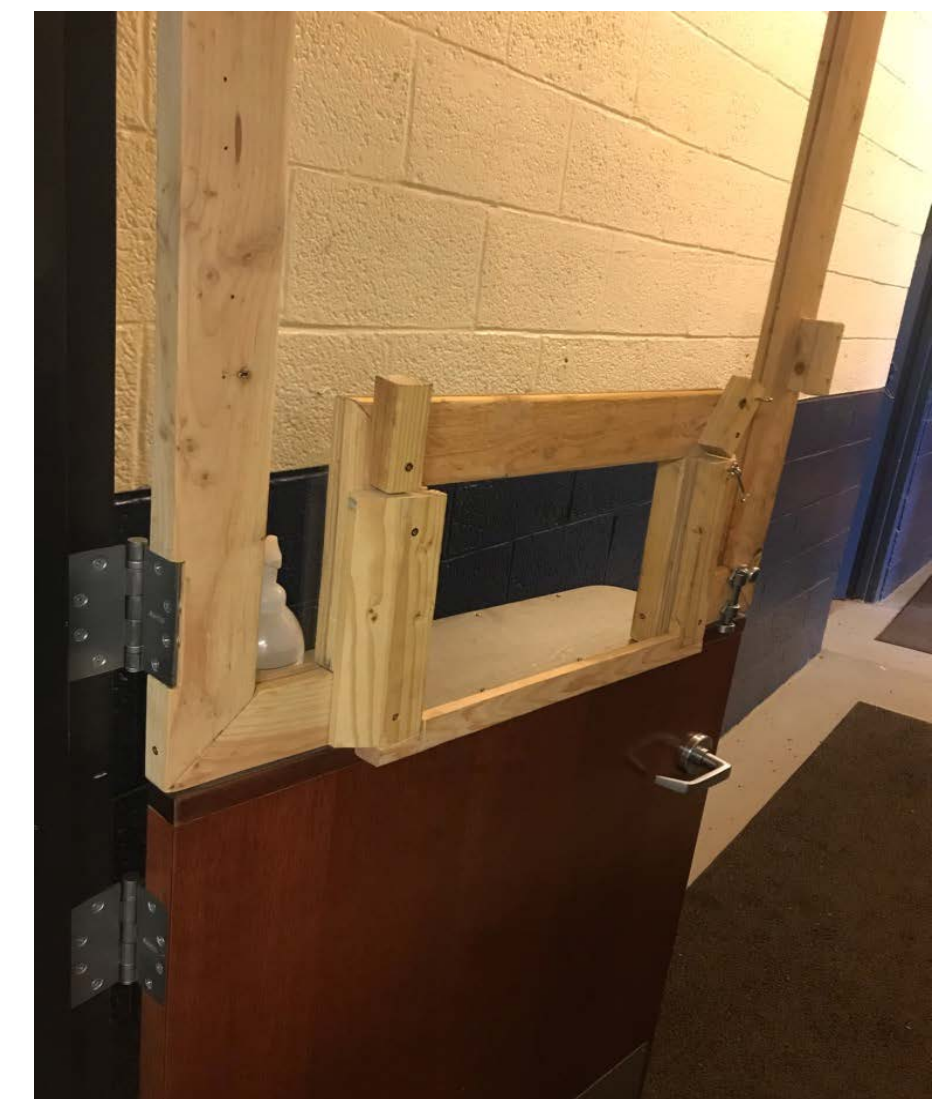
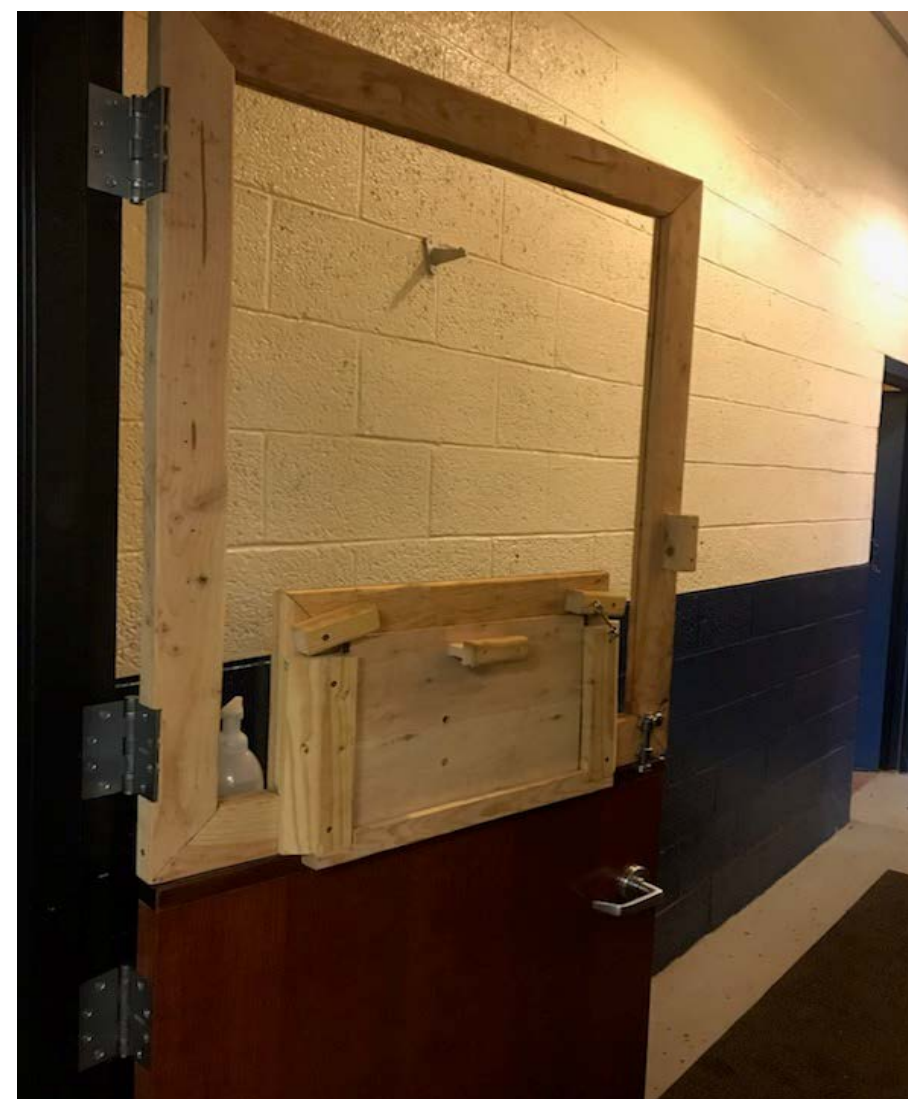
PennDOT District 4 – Wayne County

Problem/Challenge Addressed

Knowing employees would need to come into the storeroom for supplies, we were worried about the spread of germs and having employees coming into close contact with each other.

Results/Key Takeaways

This barrier helps to prevent the spread of germs with only a small space to pass supplies through. The insert easily comes out, so when no one needs supplies the slot can remain closed. Adding hand sanitizer outside the door further helps prevent the spread of germs.



Method/Process/Product to Resolve Challenge

This barrier was constructed using 2x4x8 wood, 2 ½ inch screws, ¼ inch plexiglass, and ¼ inch plywood. It was made as the same size as the original top ½ of the door.

- The joints were cut at 45° angles and fastened with the screws.
- The plexiglass was then installed.
- The bottom was cut out and mitered to accept a small access panel, allowing storeroom personnel to give and receive items without being in direct contact with anyone.
- The access panel can slide opened and closed.
- Turn style locks were installed along with a hook and loop lock to prevent unauthorized access.
- The barrier was then mounted to the existing hinges and received the existing lock to make the door one solid door or leave the option to stay as a “Dutch” door.



Contact Information

Thomas White, CEM
570-253-3130
Thomwhite@pa.gov