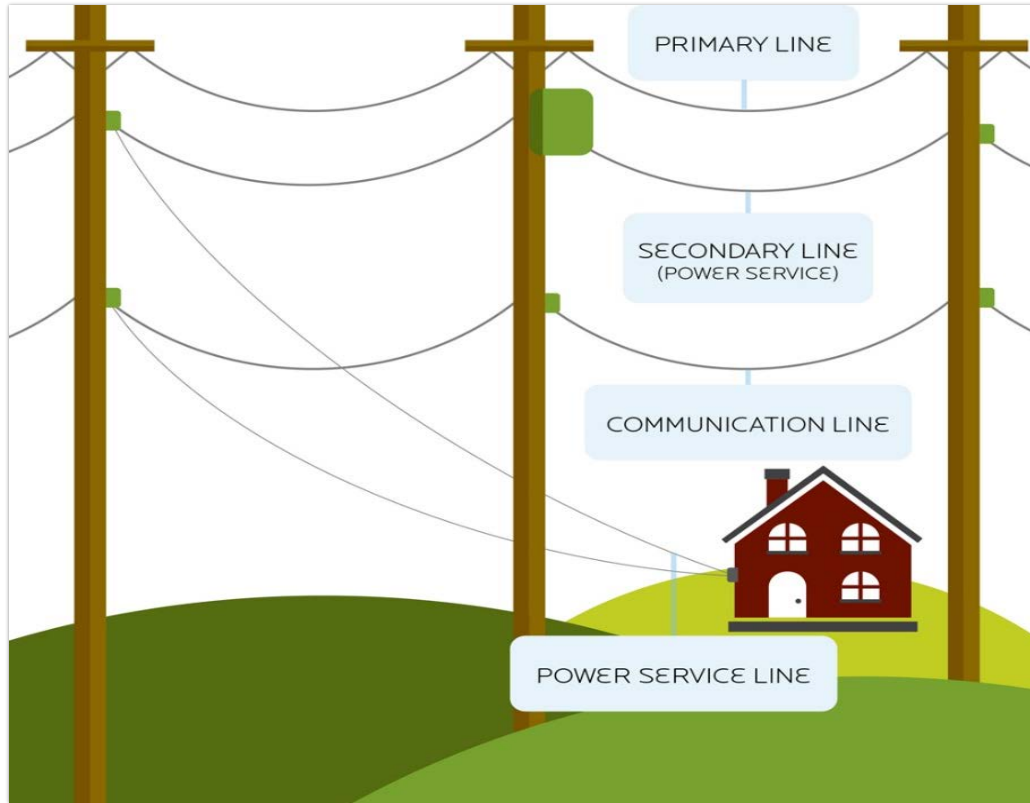


Pink Flag Policy: Overhead Line Delineation

The purpose of this presentation is to enhance the safety and awareness of dump truck operations in Penndot work areas

Jacob Decker, Blair County Maintenance Manager

Cable and Line Information



- **Three Types of Lines:**
 - Primary Line
 - Neutral Line
 - Communication Line

Electrical Hazards in Work Areas

- **DIRECT CONTACT:** Raising the truck bed into the overhead power lines will energize the truck and the ground around the truck.
- **INDIRECT CONTACT:** Raising the truck bed in close proximity to the overhead power lines could cause electricity to jump (or "arc") across to the bed, energizing the truck and the ground around it.
- **BRINGING DOWN WIRES:** If the overhead power lines fall on the truck or the ground, both can become energized.
- **BRINGING ELECTRICITY TO GROUND LEVEL:** Workers who are in contact with the energized truck or standing near the truck are also at risk

Topic Overview

Blair County Accident

After Action Review

Pink Flag Policy



Blair County Accident

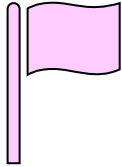
- On May 20, 2019, Blair County Maintenance was performing a mill and fill operation on SR 4002 Sugar Run Rd as prep work for upcoming sealcoat operations
- Around 10 AM a vendor truck was dumping into the widener and hit a power line with the cab protector on the truck bed. The truck bed arced off the power line and left a burn mark in the side of the truck
- Work was stopped and the truck and widener had to be backed up to get away from the wire and lower the truck bed.
- Luckily, the incident did not result in any injuries or damage to equipment



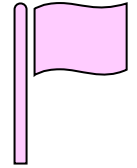
Burnt Marks from Power Wire

After Action Review

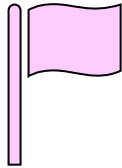
- AAR Scheduled with the County Manager, Assistant, and Vendor
- Discussion with the vendor's management staff to explore options for making our work areas safer
- The vendor explained that they had a worker killed in 2008 from this exact scenario. He was electrocuted from a dump truck contacting an overhead line on a paving operation
- The company implemented the overhead line delineation policy after the 2008 accident



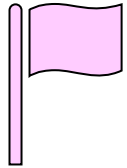
Pink Flags Overhead Line Policy



- Incident involving vendor truck with our dump person prompted an AAR
- District 9 adopted the policy to place pink flags on each side of the roadway directly under any overhead line
- This reminds the drivers, dump person, equipment operators, and the rest of the crew that there is an overhead line above
- This is mandatory on any Paving, Sealcoat, Mill and Fill, or Shoulder Backup operation
- Pink flags can be purchased for about \$12 per 100
- This policy has been implemented district wide



Pink Flags Overhead Line Policy



This letter is being written to outline a policy was implemented by District 9 following an incident and AAR with a local vendor. This action was taken to increase situational awareness for PennDOT personnel and vendor personnel on the work site.

If a potential exists to breach minimum safe clearances to any overhead power lines, consult with the utility owner to evaluate any options, including whether they can de-energize the power source or insulate the overhead line. If this cannot be accomplished, the following options outlined below shall be exercised.

Mark the affected area where potential exists to breach a 10' clearance to the power lines with warning signs, pink flags, and/or pink paint marks. This must be reviewed by the crew prior to performing work. Illuminate the hazard, signs, flags or paint marks as needed. It is recommended but not mandatory that the crew performing the work installs the pink flags. The pink flags must be installed prior to any Mill & Fill, Sealcoat, Paving, or Shoulder backup operation.

Utilize a spotter when working or dumping trucks in the affected area and maintain communication with the truck driver and crew as necessary. The spotter is responsible for the crew and the driver to assure adequate clearances are maintained. The driver and the entire crew are responsible to follow the direction of the spotter. Anyone identifying a hazard that the spotter is not aware of should communicate it immediately to all involved.

When necessary, the truck, transfer machine, paver or other equipment may need to relocate to a safe area to fill the hopper if dumping a truck presents a hazard in its current location.

If you have any questions, please contact Jacob Decker, Blair County Manager at (814)696-7270



Tribute to Our Fallen Coworkers

