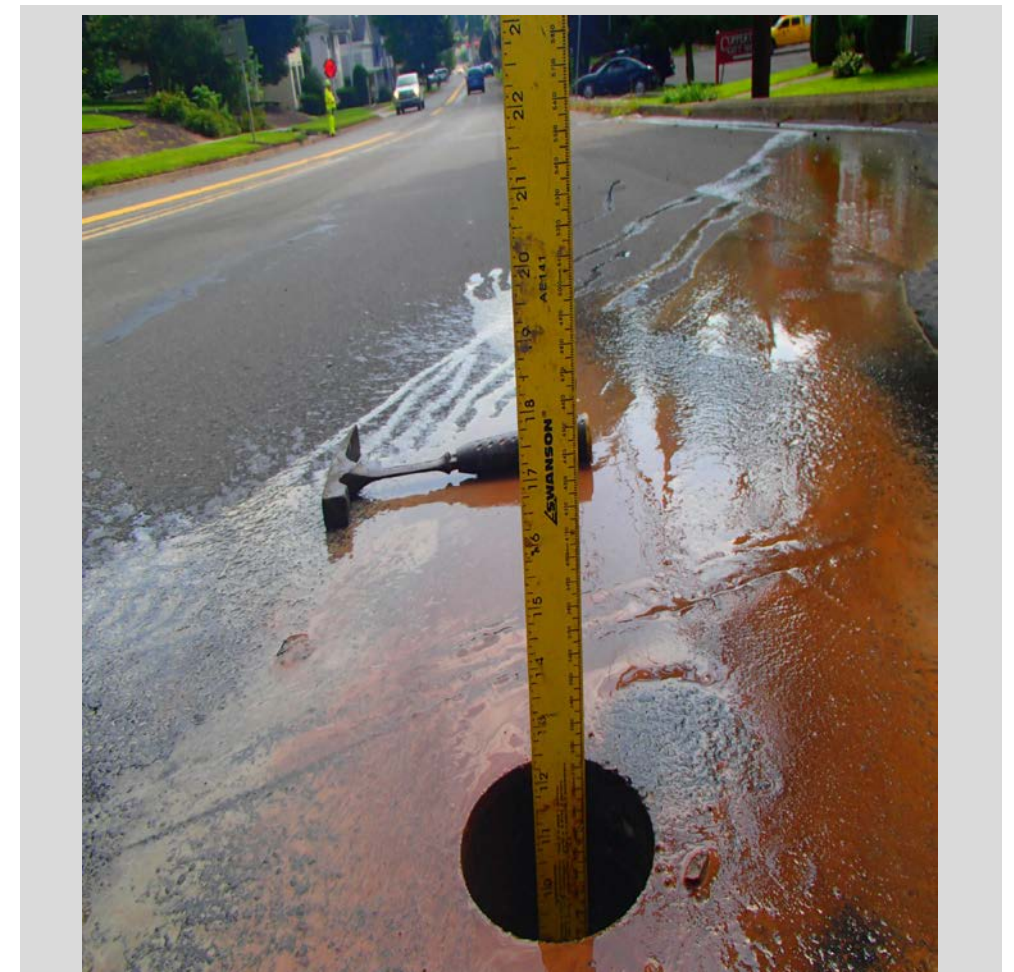


# Pavement Core Location Photos

## PennDOT District 3

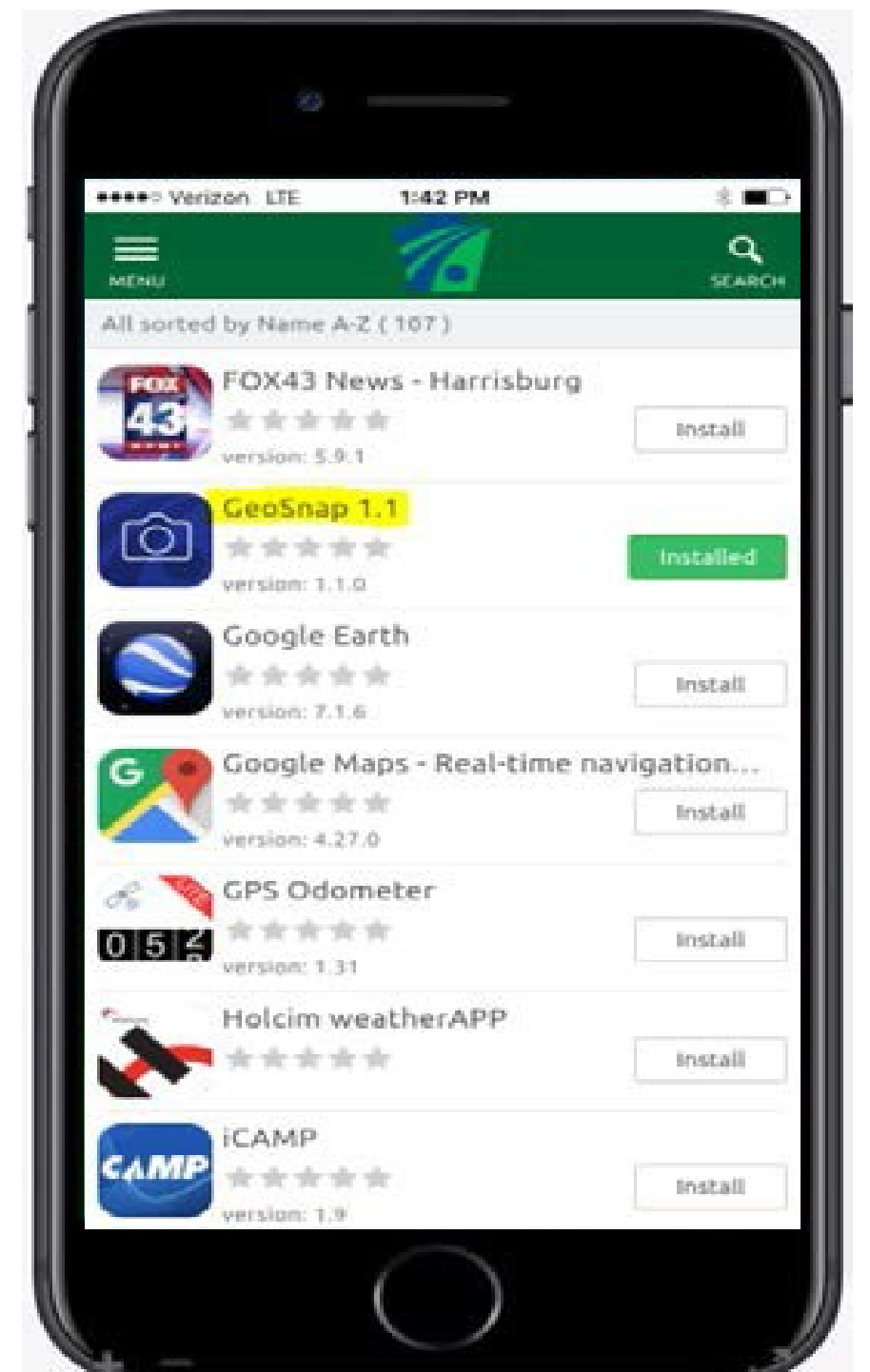
### Problem/Challenge Addressed

Trying to reference pavement core sample locations on photos proved difficult for design staff, particularly if they were not intimately familiar with the roadway and surrounding features. During a pavement selection meeting, design staff members were reviewing a Lycoming County SR 973 resurfacing project. At a specific location, the lane configuration included an exclusive left-turn lane, an acceleration lane and two travel lanes. Even with the assistance of VideoLog and Google Maps, the team struggled to identify where a pavement core was taken.



### Method/Process/Product to Resolve Challenge

Taking an additional photo helps to put the pavement core location in perspective to the surrounding features of the roadway cross section. This minor update to the core sample process provides additional details to the designers.



### Results/Key Takeaways

After sharing this idea with the District 3 Geotechnical Unit, they agreed to capture a photo approximately 30' from the pavement core that clearly shows the location in relation to the lane configuration. In addition, they use the PennDOT GeoSnap app to capture the photo, making the image available in the photo data layer in Maintenance-IQ.

### Contact Information

Joel Klemick  
570-368-4265  
Jklemick@pa.gov