

# PENNSYLVANIA Airports Economic Impact



## The Pennsylvania Airport System

Pennsylvania's aviation industry continues to provide high quality jobs and spur important local spending by on-airport businesses and agencies. The commonwealth's system of 15 commercial service and 117 general aviation airports connects Pennsylvania businesses and residents to the national and global economy. This system is comprised of a network of airports, airlines, air cargo businesses, corporate flight departments, pri-

vate aircraft owners, and recreational airplane pilots. Manufacturers in the state rely on airports to access markets and to receive supplies. Businesses rely on airports to conduct face-to-face meetings with customers and business associates within the United States and abroad. Leisure travelers use airports to reach recreational and tourist sites and to visit with family and friends.

## Pennsylvania's Total Annual Economic Impacts from Aviation

When all of the impacts of Pennsylvania's system airports are added together, nearly 304,500 total jobs can be traced to the aviation industry. These employees receive more than \$9.2 billion in total payroll, and generate nearly \$23.6 billion in total economic activity. In addition, Pennsylvania's airports provide a number of health, welfare, and safety benefits, the impacts of which are immeasurable. Such services include aerial agricultural spraying, medical transport and evacuation, flight training, law enforcement, wildlife management, military exercises, and search and rescue operations.

### Impact Measures

*Employment* measures the number of full-time equivalent (FTE) jobs related to airport activity, including on-airport

construction. A part-time employee is counted as half a full-time employee.

*Payroll* measures the total annual wages and benefits paid to all workers whose salaries are directly attributable to airport activity.

*Economic Activity (Output)* measures the value of goods and services related to airports in Pennsylvania. The output of on-airport businesses is typically assumed to be the sum of annual gross sales and average annual capital expenditures.

**Total Jobs – 304,464**

**Total Payroll – \$9.2 billion**

**Total Output – \$23.6 billion**

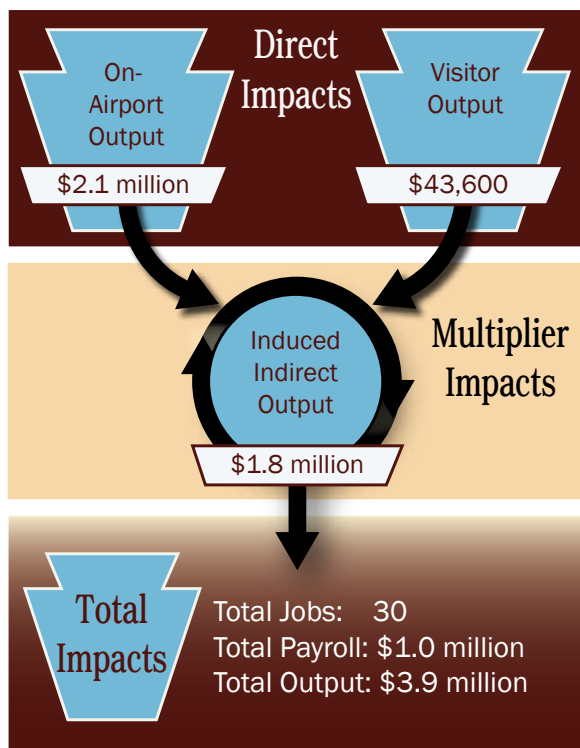
## Study Process

This study, sponsored by the Pennsylvania Department of Transportation, Bureau of Aviation, analyzes the economic impact of Pennsylvania's aviation industry as a whole, as well as the impacts of its individual airports. The study confirms that many people—beyond the immediate environs of each airport—derive significant economic benefits from the daily operation of the airport system. The study also evaluates some of the less-quantifiable impacts linked with aviation, such as health, safety, recreation, education, and overall community strength.

A detailed modeling effort was undertaken to quantify the economic impacts of on-airport activities (airlines, fixed base operators, flight schools, corporate flight departments, government, and various other business). Also quantified were the impacts derived from the expenditures of visitors who arrive via scheduled service and general aviation aircraft. These on-airport impacts and visitor expenditures support additional economic activity throughout Pennsylvania.

As initial waves of activities associated with the airport system are released into Pennsylvania's economy, successive waves of employment, payroll, and economic benefit occur. These additional benefits are measured using sector-specific employment, payroll, and economic impact multipliers.

# Economic Impact of St. Marys Municipal Airport



Source: Wilbur Smith Associates

## Impact Types

*Direct Impacts* include both direct impacts related to on-airport businesses and government agencies, and off-airport impacts, which are usually attributable to visitor spending.

*Multiplier Impacts* are comprised of indirect and induced impacts. These impacts are attributed to employees spending their earnings at local businesses, and the on-airport businesses purchasing goods and services locally. This re-circulation is commonly referred to as the “multiplier effect.”

*Total Impacts* are the combination of all direct, indirect, and induced impacts.



## Qualitative Benefits

St. Marys Municipal Airport is located approximately two miles east of the City of St. Marys in Elk County. Access to the airport is available via State Route 120 and State Route 255.

St. Marys Municipal Airport is classified as a Basic airport by the Pennsylvania Bureau of Aviation. The airport has 16 based aircraft and experiences approximately 6,700 annual operations. The airfield’s only runway, Runway 10/28, is 4,300 feet long by 75 feet wide and outfitted with medium intensity runway lighting (MIRL). In addition, the runway is served by four non-precision approaches (LOC/DME RWY 28, VOR RWY 28, RNAV RWY 10, and RNAV RWY 28).

St. Marys Municipal Airport supports the general aviation needs of the local community and region. The airport has four on-site business tenants, including fixed base operator Caruso Air Service. The FBO offers fueling, aircraft parking, and maintenance, among other services. Other businesses include Cloud 9 Aerosports, which sells sport aircraft and offers instruction and other services, and El-Awar Flight School. In addition, Silver Wing Restaurant serves both patrons and employees of the airport.

Corporate flight activity is common at St. Marys Municipal Airport. Much of the business activity is due to natural resources in the area, as companies in lumber, carbon graphite, and the Marcellus Shale natural gas industry all utilize the facility. The U.S. Forest Service and area politicians use the airport as well.

Daily activities at St. Marys Municipal Airport are recreational flying—including ultra-light activity—and flight training. Other common activities include touch-and-go operations, utility inspections, air cargo, sightseeing, military exercises, environmental patrol flights, and operations by the Civil Air Patrol.

St. Marys Municipal hosts a number of aviation-related community events to spread aviation knowledge. Aviation Awareness Day involves aircraft rides, food, and prizes, and is typically attended by as many as 500 visitors. In addition, the Adopt-An-Airport event happens two to three times annually. At these events, groups of 50 to 100 school children tour the airport.