

# PENNSYLVANIA Airports Economic Impact



## The Pennsylvania Airport System

Pennsylvania's aviation industry continues to provide high quality jobs and spur important local spending by on-airport businesses and agencies. The commonwealth's system of 15 commercial service and 117 general aviation airports connects Pennsylvania businesses and residents to the national and global economy. This system is comprised of a network of airports, airlines, air cargo businesses, corporate flight departments, pri-

vate aircraft owners, and recreational airplane pilots. Manufacturers in the state rely on airports to access markets and to receive supplies. Businesses rely on airports to conduct face-to-face meetings with customers and business associates within the United States and abroad. Leisure travelers use airports to reach recreational and tourist sites and to visit with family and friends.

## Pennsylvania's Total Annual Economic Impacts from Aviation

When all of the impacts of Pennsylvania's system airports are added together, nearly 304,500 total jobs can be traced to the aviation industry. These employees receive more than \$9.2 billion in total payroll, and generate nearly \$23.6 billion in total economic activity. In addition, Pennsylvania's airports provide a number of health, welfare, and safety benefits, the impacts of which are immeasurable. Such services include aerial agricultural spraying, medical transport and evacuation, flight training, law enforcement, wildlife management, military exercises, and search and rescue operations.

### Impact Measures

*Employment* measures the number of full-time equivalent (FTE) jobs related to airport activity, including on-airport

construction. A part-time employee is counted as half a full-time employee.

*Payroll* measures the total annual wages and benefits paid to all workers whose salaries are directly attributable to airport activity.

*Economic Activity (Output)* measures the value of goods and services related to airports in Pennsylvania. The output of on-airport businesses is typically assumed to be the sum of annual gross sales and average annual capital expenditures.

**Total Jobs – 304,464**

**Total Payroll – \$9.2 billion**

**Total Output – \$23.6 billion**

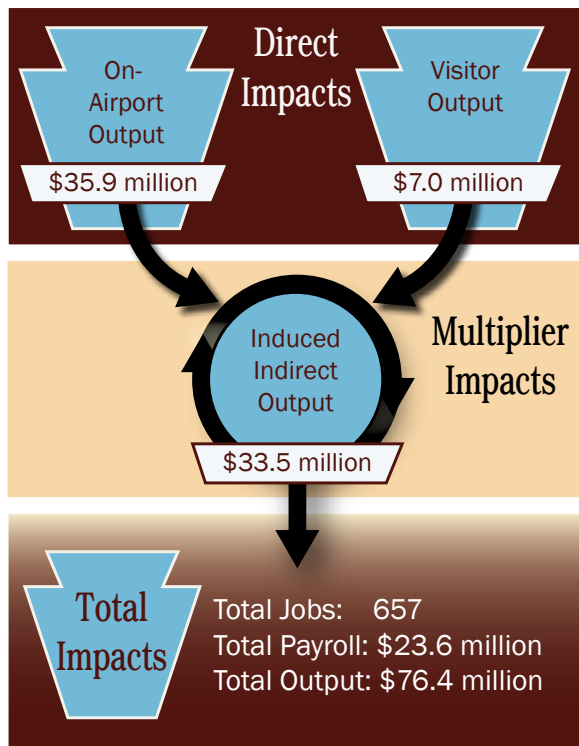
## Study Process

This study, sponsored by the Pennsylvania Department of Transportation, Bureau of Aviation, analyzes the economic impact of Pennsylvania's aviation industry as a whole, as well as the impacts of its individual airports. The study confirms that many people—beyond the immediate environs of each airport—derive significant economic benefits from the daily operation of the airport system. The study also evaluates some of the less-quantifiable impacts linked with aviation, such as health, safety, recreation, education, and overall community strength.

A detailed modeling effort was undertaken to quantify the economic impacts of on-airport activities (airlines, fixed base operators, flight schools, corporate flight departments, government, and various other business). Also quantified were the impacts derived from the expenditures of visitors who arrive via scheduled service and general aviation aircraft. These on-airport impacts and visitor expenditures support additional economic activity throughout Pennsylvania.

As initial waves of activities associated with the airport system are released into Pennsylvania's economy, successive waves of employment, payroll, and economic benefit occur. These additional benefits are measured using sector-specific employment, payroll, and economic impact multipliers.

# Economic Impact of Lancaster Airport



Source: Wilbur Smith Associates

## Impact Types

*Direct Impacts* include both direct impacts related to on-airport businesses and government agencies, and off-airport impacts, which are usually attributable to visitor spending.

*Multiplier Impacts* are comprised of indirect and induced impacts. These impacts are attributed to employees spending their earnings at local businesses, and the on-airport businesses purchasing goods and services locally. This re-circulation is commonly referred to as the “multiplier effect.”

*Total Impacts* are the combination of all direct, indirect, and induced impacts.



## Qualitative Benefits

Lancaster Airport is located directly north of Lancaster, Pennsylvania. The airport is accessible via U.S. 30, located about seven miles south of the airport, or the Pennsylvania Turnpike (1-76), approximately 15 miles north. The Lancaster Airport Authority is the airport sponsor.

The airport is classified as a Commercial Service airport by the Pennsylvania Bureau of Aviation. Lancaster Airport has over 140 based aircraft and experiences over 90,000 operations a year. The airport is served by two runways. Runway 8/26 measures 6,934 feet in length by 150 feet in width and is outfitted with high intensity runway lighting (HIRL). Runway 13/31 is 4,101 feet long by 100 feet wide and outfitted with medium intensity runway lighting (MIRL). The airport is served by a precision approach (ILS RWY 08) and eight non-precision approaches.

Cape Air operates five commercial flights per day from Lancaster to Baltimore/Washington International Airport. In addition, the airport has approximately 25 on-site businesses offering a full spectrum of aviation and related services. Fixed base operator services are offered by Airways, Inc., while Fiorentino’s Restaurant caters to airport patrons. In addition, numerous maintenance, avionics, sales and charter businesses call Lancaster Airport home. Dutch County Helicopters, AeroTech Services, and Lancaster Helicopters offer daily flight instruction at Lancaster Airport. The airport works directly with local and area colleges and universities, notably Millersville University, in flight training and career development programs.

As a major general aviation airport, corporate flights are a daily occurrence and essential part of the airport’s activity. The following are but a few of the businesses that utilize Lancaster Airport regularly: JDI, Dart Container/Flight Management Venture Jets, Manheim Auto Auction, and Spectra Energy.

Lancaster Airport experiences many other aviation activities such as recreational flying, aerial inspections of utilities, aerial sightseeing, and military exercises by the Pennsylvania Air National Guard. Other common activities include operations by the Civil Air Patrol and local law enforcement, medical flights, aerial photography, search and rescue, and air cargo. The airport also experiences seasonal agricultural spraying activity.

Community Days is a biennial event that attracts approximately 20,000 attendees to the airport for aircraft displays and an air show. There are also several fly-ins scheduled throughout the year intended for both recreational and educational purposes.