

# PENNSYLVANIA Airports Economic Impact



## The Pennsylvania Airport System

Pennsylvania's aviation industry continues to provide high quality jobs and spur important local spending by on-airport businesses and agencies. The commonwealth's system of 15 commercial service and 117 general aviation airports connects Pennsylvania businesses and residents to the national and global economy. This system is comprised of a network of airports, airlines, air cargo businesses, corporate flight departments, pri-

vate aircraft owners, and recreational airplane pilots. Manufacturers in the state rely on airports to access markets and to receive supplies. Businesses rely on airports to conduct face-to-face meetings with customers and business associates within the United States and abroad. Leisure travelers use airports to reach recreational and tourist sites and to visit with family and friends.

## Pennsylvania's Total Annual Economic Impacts from Aviation

When all of the impacts of Pennsylvania's system airports are added together, nearly 304,500 total jobs can be traced to the aviation industry. These employees receive more than \$9.2 billion in total payroll, and generate nearly \$23.6 billion in total economic activity. In addition, Pennsylvania's airports provide a number of health, welfare, and safety benefits, the impacts of which are immeasurable. Such services include aerial agricultural spraying, medical transport and evacuation, flight training, law enforcement, wildlife management, military exercises, and search and rescue operations.

### Impact Measures

*Employment* measures the number of full-time equivalent (FTE) jobs related to airport activity, including on-airport

construction. A part-time employee is counted as half a full-time employee.

*Payroll* measures the total annual wages and benefits paid to all workers whose salaries are directly attributable to airport activity.

*Economic Activity (Output)* measures the value of goods and services related to airports in Pennsylvania. The output of on-airport businesses is typically assumed to be the sum of annual gross sales and average annual capital expenditures.

**Total Jobs – 304,464**

**Total Payroll – \$9.2 billion**

**Total Output – \$23.6 billion**

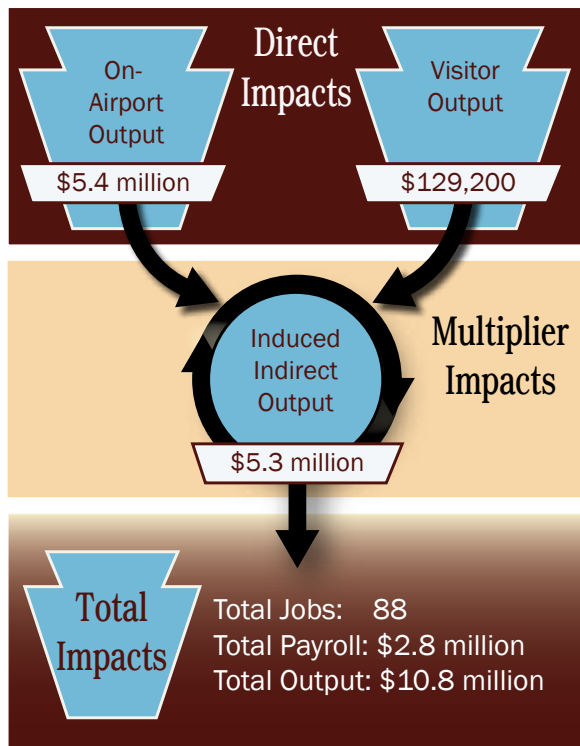
## Study Process

This study, sponsored by the Pennsylvania Department of Transportation, Bureau of Aviation, analyzes the economic impact of Pennsylvania's aviation industry as a whole, as well as the impacts of its individual airports. The study confirms that many people—beyond the immediate environs of each airport—derive significant economic benefits from the daily operation of the airport system. The study also evaluates some of the less-quantifiable impacts linked with aviation, such as health, safety, recreation, education, and overall community strength.

A detailed modeling effort was undertaken to quantify the economic impacts of on-airport activities (airlines, fixed base operators, flight schools, corporate flight departments, government, and various other business). Also quantified were the impacts derived from the expenditures of visitors who arrive via scheduled service and general aviation aircraft. These on-airport impacts and visitor expenditures support additional economic activity throughout Pennsylvania.

As initial waves of activities associated with the airport system are released into Pennsylvania's economy, successive waves of employment, payroll, and economic benefit occur. These additional benefits are measured using sector-specific employment, payroll, and economic impact multipliers.

# Economic Impact of Indiana County– Jimmy Stewart Field



Source: Wilbur Smith Associates

## Impact Types

*Direct Impacts* include both direct impacts related to on-airport businesses and government agencies, and off-airport impacts, which are usually attributable to visitor spending.

*Multiplier Impacts* are comprised of indirect and induced impacts. These impacts are attributed to employees spending their earnings at local businesses, and the on-airport businesses purchasing goods and services locally. This re-circulation is commonly referred to as the “multiplier effect.”

*Total Impacts* are the combination of all direct, indirect, and induced impacts.



## Qualitative Benefits

Indiana County–Jimmy Stewart Field is located in Indiana County approximately 65 miles northeast of Pittsburgh. The airport is accessible via U.S. 422 and U.S. 119.

Indiana County–Jimmy Stewart Field is classified as an Intermediate airport by the Pennsylvania Bureau of Aviation. The airport has 40 based aircraft and experiences over 22,000 annual operations. The airport’s runway, Runway 10/28, measures 4,000 feet long by 75 feet wide, and is outfitted with medium intensity runway lighting (MIRL). The airport is equipped with two non-precision approaches (LOC RWY 28 and GPS RWY 28).

Indiana County–Jimmy Stewart Field supports the general aviation needs of the local community and surrounding region. The airport-run fixed base operator offers aviation gas and jet fueling services. The airport also has four other on-site business tenants offering a wide range of aviation services, including flight instruction at Lease Aviation, avionics sales and service at Airworks Aviations, agricultural spraying by Vrabanic, and UAV development by Penn State Electro-Optics Center.

Corporate flights are a daily activity at Indiana County–Jimmy Stewart Field. In addition to local businesses utilizing the airport for its general aviation services, the airport has seen an increase in corporate aviation activity due to Marcellus Shale natural gas development in the area. The following businesses utilize Indiana County–Jimmy Stewart Field with regular frequency:

- Aztec Well Services
- The Reschini Group
- Royal Oil & Gas
- XTO Energy

The airport experiences numerous additional types of activity daily, including recreational flights, flight training, and touch-and-go operations. Various medical operations also occur at the airport on a monthly basis, including flights by STAT Medivac, Medstar, and Life Flight. Military exercises at Indiana County–Jimmy Stewart Field typically include helicopter training operations by the Air National Guard based in Johnstown. The airport sees pipeline aerial inspection activity, as well as operations by federal, state, and local law enforcement and the Civil Air Patrol. Prisoner transport takes place on a monthly basis at the airport and it is noteworthy to point out that judges are occasionally flown into the airport when local courts are backlogged. An agricultural spray operator bases an aircraft at the airport and provides services for the entire northeast U.S. region. In addition, the airport hosts an open house in June which includes antique military aircraft and attracts over 3,000 attendees annually.