

PENNSYLVANIA Airports Economic Impact

The Pennsylvania Airport System

Pennsylvania's aviation industry continues to provide high quality jobs and spur important local spending by on-airport businesses and agencies. The commonwealth's system of 15 commercial service and 117 general aviation airports connects Pennsylvania businesses and residents to the national and global economy. This system is comprised of a network of airports, airlines, air cargo businesses, corporate flight departments, pri-

vate aircraft owners, and recreational airplane pilots. Manufacturers in the state rely on airports to access markets and to receive supplies. Businesses rely on airports to conduct face-to-face meetings with customers and business associates within the United States and abroad. Leisure travelers use airports to reach recreational and tourist sites and to visit with family and friends.

Pennsylvania's Total Annual Economic Impacts from Aviation

When all of the impacts of Pennsylvania's system airports are added together, nearly 304,500 total jobs can be traced to the aviation industry. These employees receive more than \$9.2 billion in total payroll, and generate nearly \$23.6 billion in total economic activity. In addition, Pennsylvania's airports provide a number of health, welfare, and safety benefits, the impacts of which are immeasurable. Such services include aerial agricultural spraying, medical transport and evacuation, flight training, law enforcement, wildlife management, military exercises, and search and rescue operations.

Impact Measures

Employment measures the number of full-time equivalent (FTE) jobs related to airport activity, including on-airport

construction. A part-time employee is counted as half a full-time employee.

Payroll measures the total annual wages and benefits paid to all workers whose salaries are directly attributable to airport activity.

Economic Activity (Output) measures the value of goods and services related to airports in Pennsylvania. The output of on-airport businesses is typically assumed to be the sum of annual gross sales and average annual capital expenditures.

Total Jobs – 304,464

Total Payroll – \$9.2 billion

Total Output – \$23.6 billion

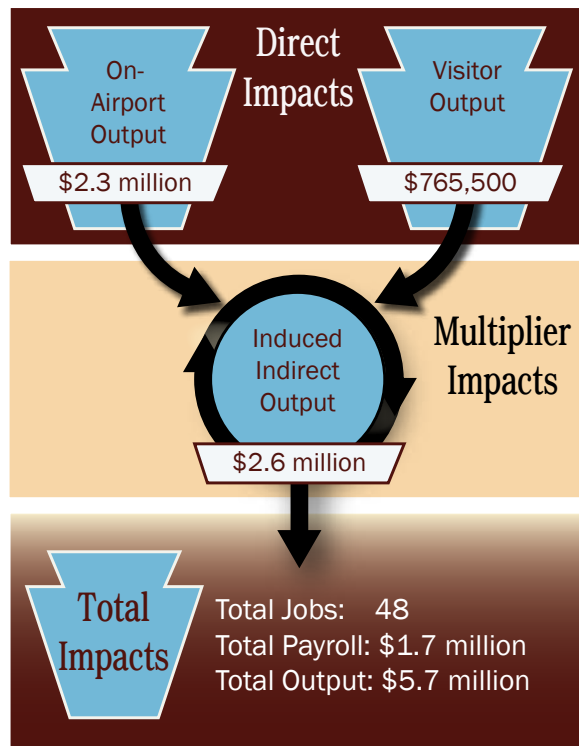
Study Process

This study, sponsored by the Pennsylvania Department of Transportation, Bureau of Aviation, analyzes the economic impact of Pennsylvania's aviation industry as a whole, as well as the impacts of its individual airports. The study confirms that many people—beyond the immediate environs of each airport—derive significant economic benefits from the daily operation of the airport system. The study also evaluates some of the less-quantifiable impacts linked with aviation, such as health, safety, recreation, education, and overall community strength.

A detailed modeling effort was undertaken to quantify the economic impacts of on-airport activities (airlines, fixed base operators, flight schools, corporate flight departments, government, and various other business). Also quantified were the impacts derived from the expenditures of visitors who arrive via scheduled service and general aviation aircraft. These on-airport impacts and visitor expenditures support additional economic activity throughout Pennsylvania.

As initial waves of activities associated with the airport system are released into Pennsylvania's economy, successive waves of employment, payroll, and economic benefit occur. These additional benefits are measured using sector-specific employment, payroll, and economic impact multipliers.

Economic Impact of Hazleton Municipal Airport



Source: Wilbur Smith Associates

Impact Types

Direct Impacts include both direct impacts related to on-airport businesses and government agencies, and off-airport impacts, which are usually attributable to visitor spending.

Multiplier Impacts are comprised of indirect and induced impacts. These impacts are attributed to employees spending their earnings at local businesses, and the on-airport businesses purchasing goods and services locally. This re-circulation is commonly referred to as the "multiplier effect."

Total Impacts are the combination of all direct, indirect, and induced impacts.



Qualitative Benefits

Hazleton Municipal Airport is located in northeastern Pennsylvania in Luzerne County, approximately two miles northwest of the City of Hazleton. The airport is accessible via Interstate 81 and U.S. Route 309, which offers north/south routes between Wilkes-Barre, Harrisburg, and Allentown with easy access to Interstate 80.

Hazleton Municipal Airport is classified as an Advanced (Business Service) airport by the Pennsylvania Bureau of Aviation (BOA). The airport has 39 based aircraft and experiences approximately 24,000 annual operations. Hazleton Municipal Airport's only runway, Runway 10/28, measures 4,898 feet long by 100 feet wide and is outfitted with new (2011) medium intensity runway lighting (MIRL). Runway 10/28 is outfitted with four non-precision approaches (LOC RWY 28, VOR RWY 10, VOR RWY 28, and RNAV RWY 10).

Hazleton Municipal Airport serves the general aviation needs of the local community and Scranton/Wilkes-Barre/Hazleton Metropolitan Statistical Area. The airport-run fixed base operator offers services such as fueling, maintenance, and aircraft parking, and also has a pilots lounge and flight planning in the general aviation terminal. The Pennsylvania State Police base aircraft and personnel at the Hazleton Municipal Airport. Other on-site business tenants include two additional aircraft maintenance companies and NEPA Ripcords, one of the oldest skydiving schools in the northeast and home of the current Guinness world record holder for most jumps, Don Kellner, as well as a branch of the Endless Mountains Air, Inc. flight school.

Corporate flight activity is a daily occurrence at Hazleton Municipal Airport. The various FBO services make the airport an attractive option for businesses with aviation needs. The following businesses use Hazleton Municipal Airport regularly:

- Walmart
- NetJets
- Tootsie Roll
- First Quality
- Gans
- Cargill
- Nonwovens
- PP&L
- ConAgra
- Archer Daniels Midland
- Auto Zone
- Office Max

Hazleton Municipal Airport also experiences recreational flying and search and rescue operations by the Pennsylvania State Police and Civil Air Patrol. Military aircraft, Geisinger Medical Center Medivac helicopters, and utility inspection aircraft utilize the airport for fueling. Seasonal activities at the airport include forest firefighting by the U.S. Forest Service and agricultural spraying. Pocono Speedway race fans also use Hazleton Municipal Airport to access the area. Hazleton Municipal Airport hosts the Collins Foundation Fly-In and the Make-a-Wish Festival.