

# PENNDOT DISTRICT 9-0

## FULTON COUNTY

VINCE GREENLAND, P.E.  
ACTING DISTRICT EXECUTIVE

# DISTRICT 9 – DISTRICT EXECUTIVE CHANGES

## Acting District Executive Rotation

### **April and May**

Vince Greenland, PE, Assistant District Executive - Design  
[vgreenland@pa.gov](mailto:vgreenland@pa.gov)  
(o)814-696-7151  
(c)814-937-7661

### **June and July**

Brad Brumbaugh, PE, Assistant District Executive - Construction  
[brbrumbaugh@pa.gov](mailto:brbrumbaugh@pa.gov)  
(o)814-696-7130  
(c)814-932-7839

### **August and September**

David Kammerer, PE, Assistant District Executive - Maintenance  
[dakammerer@pa.gov](mailto:dakammerer@pa.gov)  
(o)814-696-7176  
(c)814-207-2205



# **PENNDOT Engineering District 9-0 OUTREACH 2023 Fulton County AGENDA**

**Vince Greenland**, Acting District Executive

- Greeting and Introductions/Agenda Summary
- Transportation Update

**Vince Greenland**, Acting District Executive

- Construction Project Update
- Overview for 2023 Construction Season

**Todd Strait**, Assistant County Maintenance Manager

- Winter Wrap-Up
- County Funded Improvements

**Vince Greenland**, Assistant District Executive, Design

- Future Projects
- Federal Local Access Road Projects

## **Southern Alleghenies Planning & Development Commission**

**Brandon Peters**, Director of Planning & Community Development

- Local Technical Assistance Program (LTAP)

*Question and Answer Session*

# PENNDOT BY THE NUMBERS



\*Total miles on all PA roadways

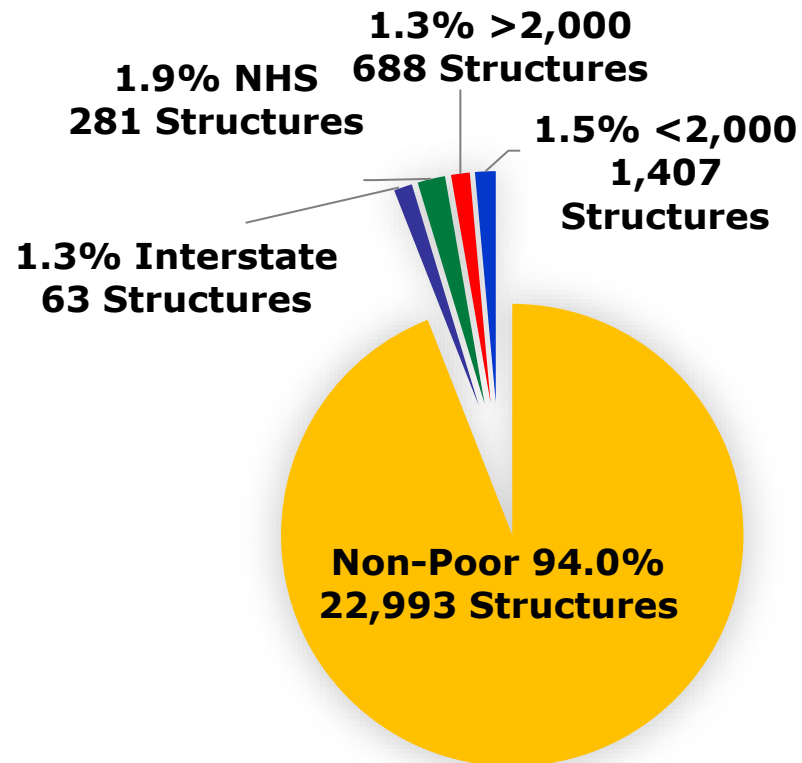
LB (8/22)



# BRIDGE AND ROADWAY ASSETS - STATEWIDE

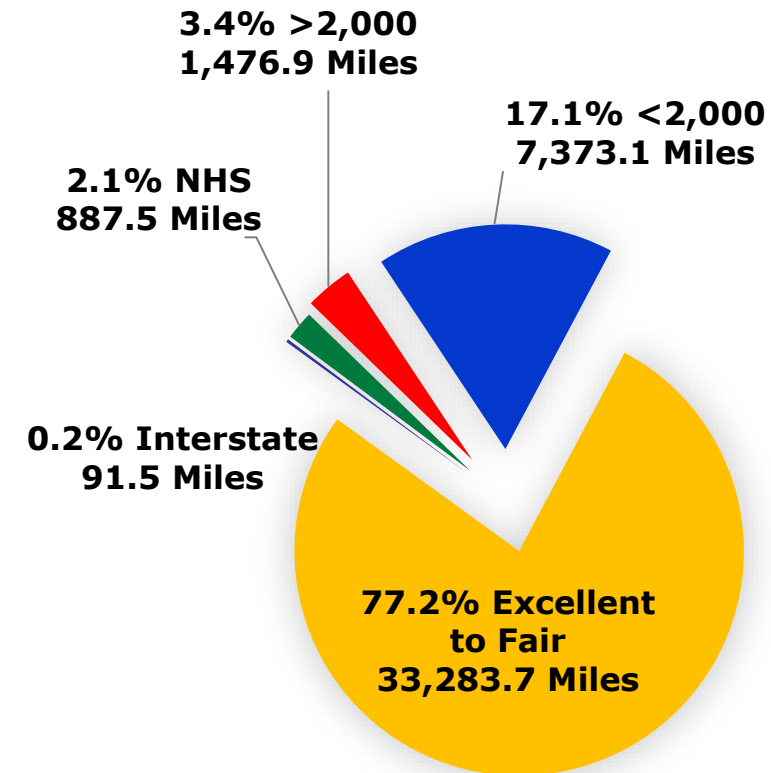
## Bridge

**6.0% Poor Deck Area**  
**(2,439 structures)**



## Roadway

**22.8% Poor IRI**  
**(9,829 miles)**



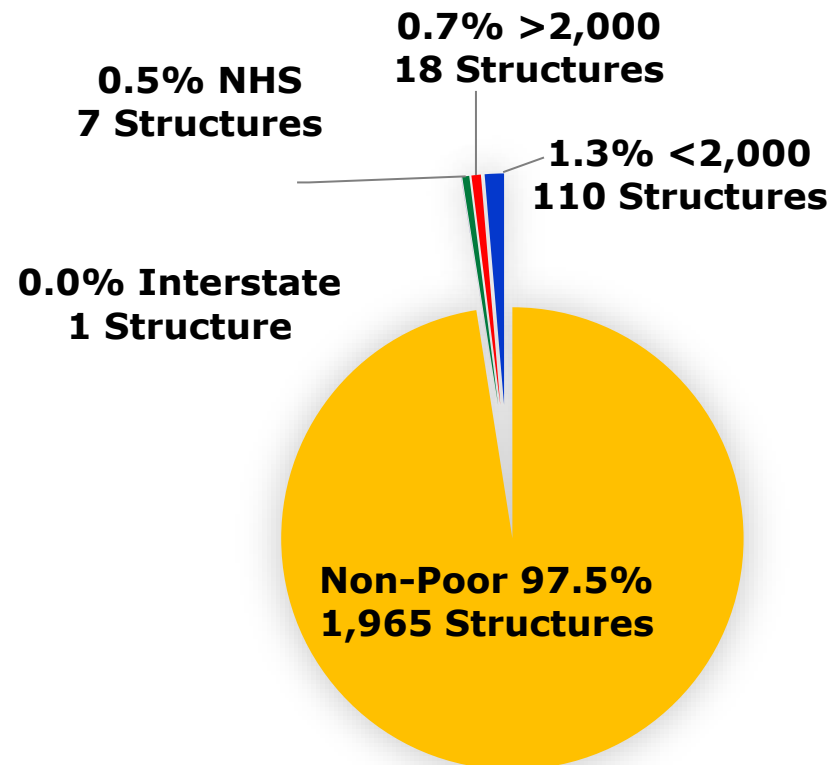
Data from 2021 Annual Performance Measures Reports



# BRIDGE AND ROADWAY ASSETS – DISTRICT 9-0

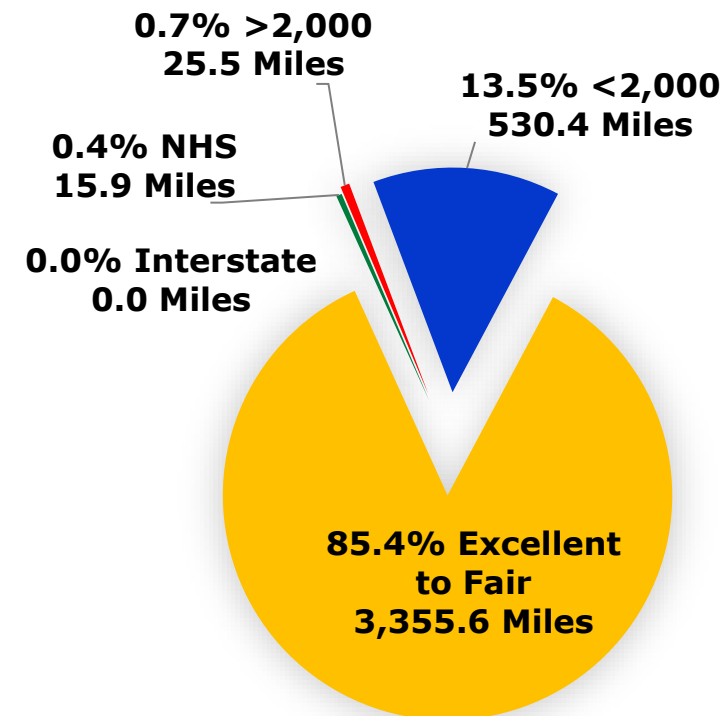
## Bridge

**2.5% Poor Deck Area**  
**(136 structures)**



## Roadway

**14.6% Poor IRI**  
**(571.8 miles)**

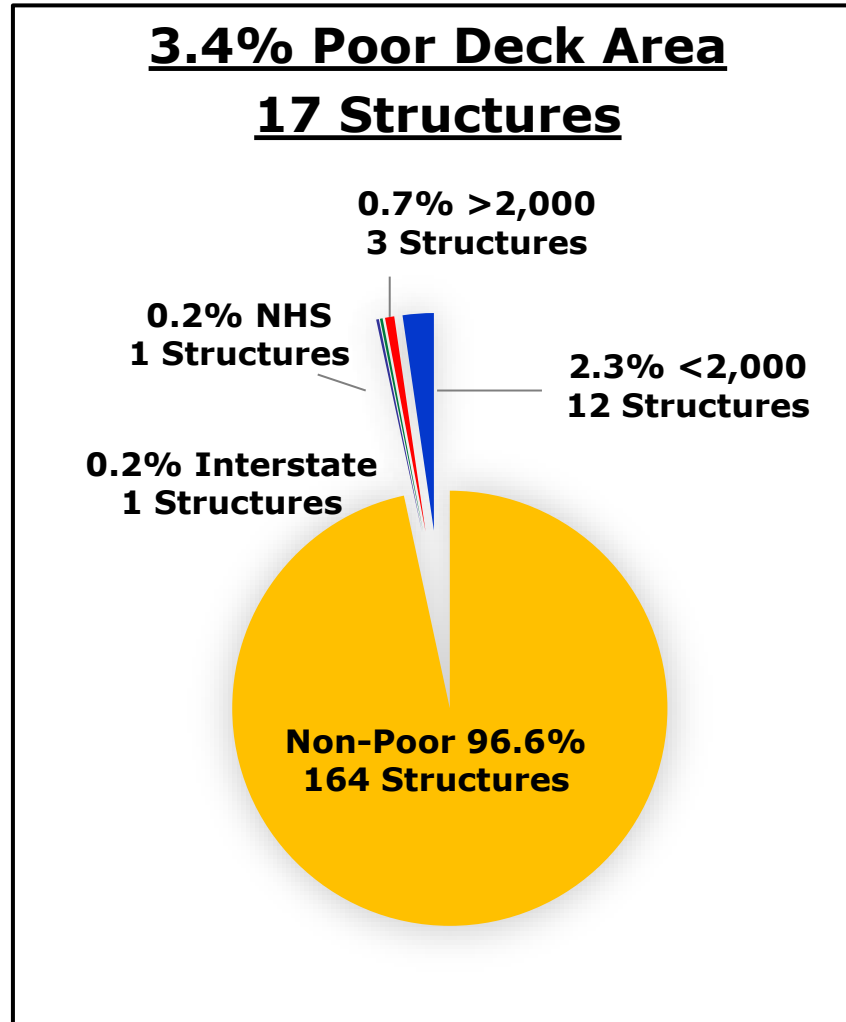


Data from 2021 Annual Performance Measures Reports

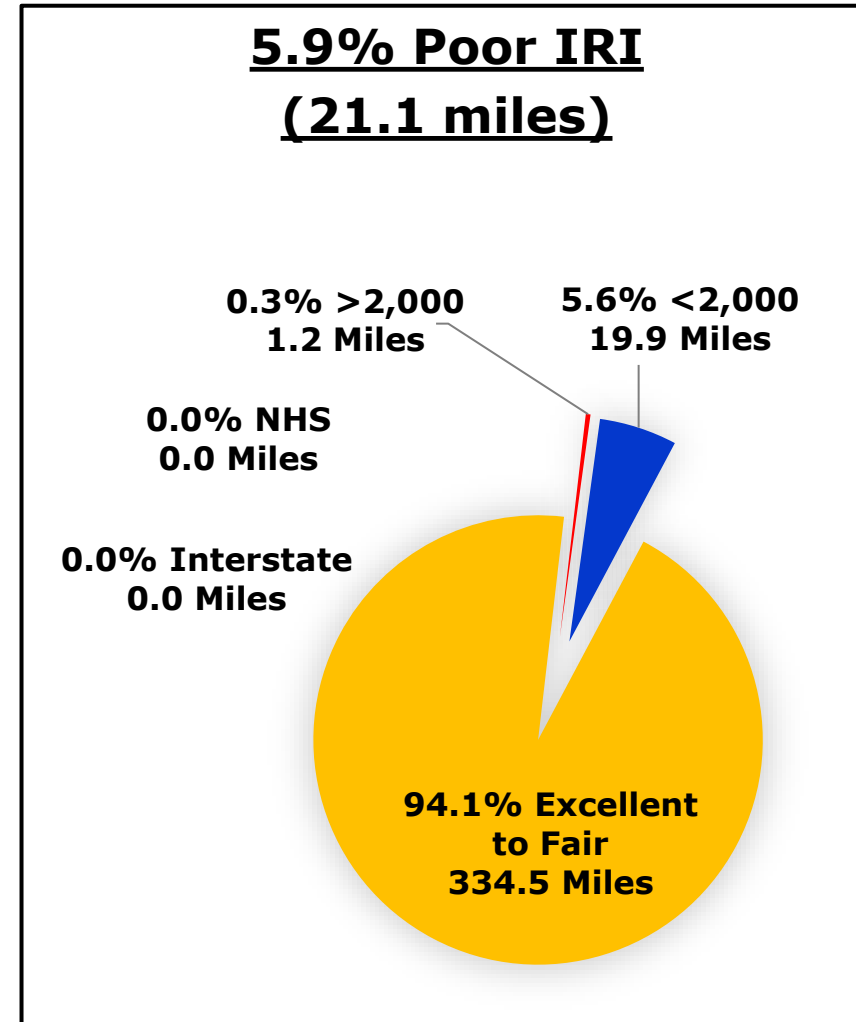


# BRIDGE AND ROADWAY ASSETS - FULTON

## Bridge



## Roadway

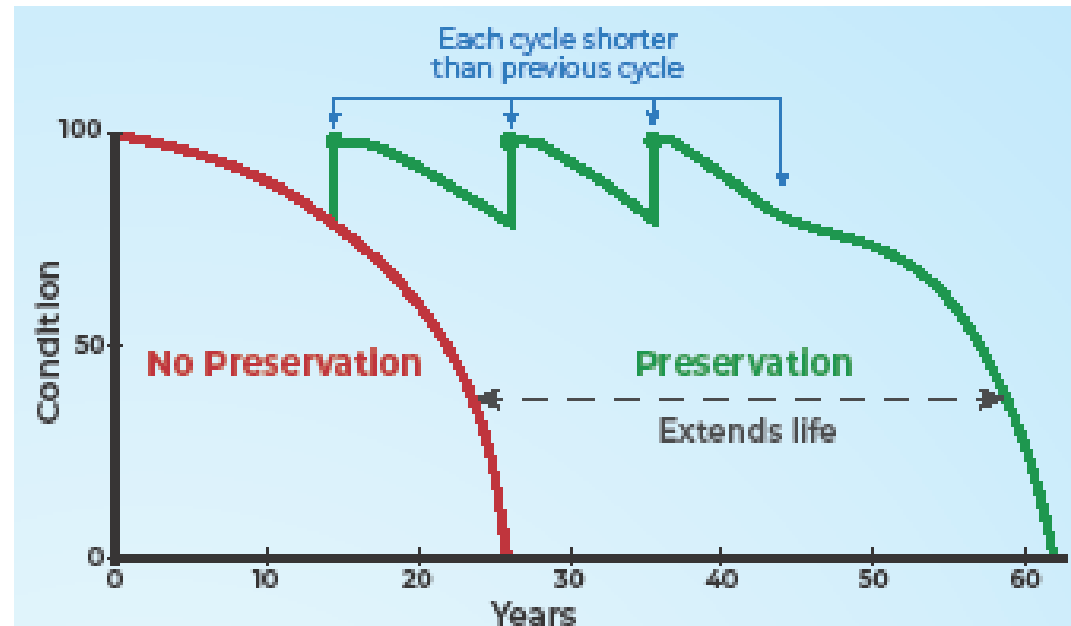


Data from 2021 Bridge Management System and Roadway Management System



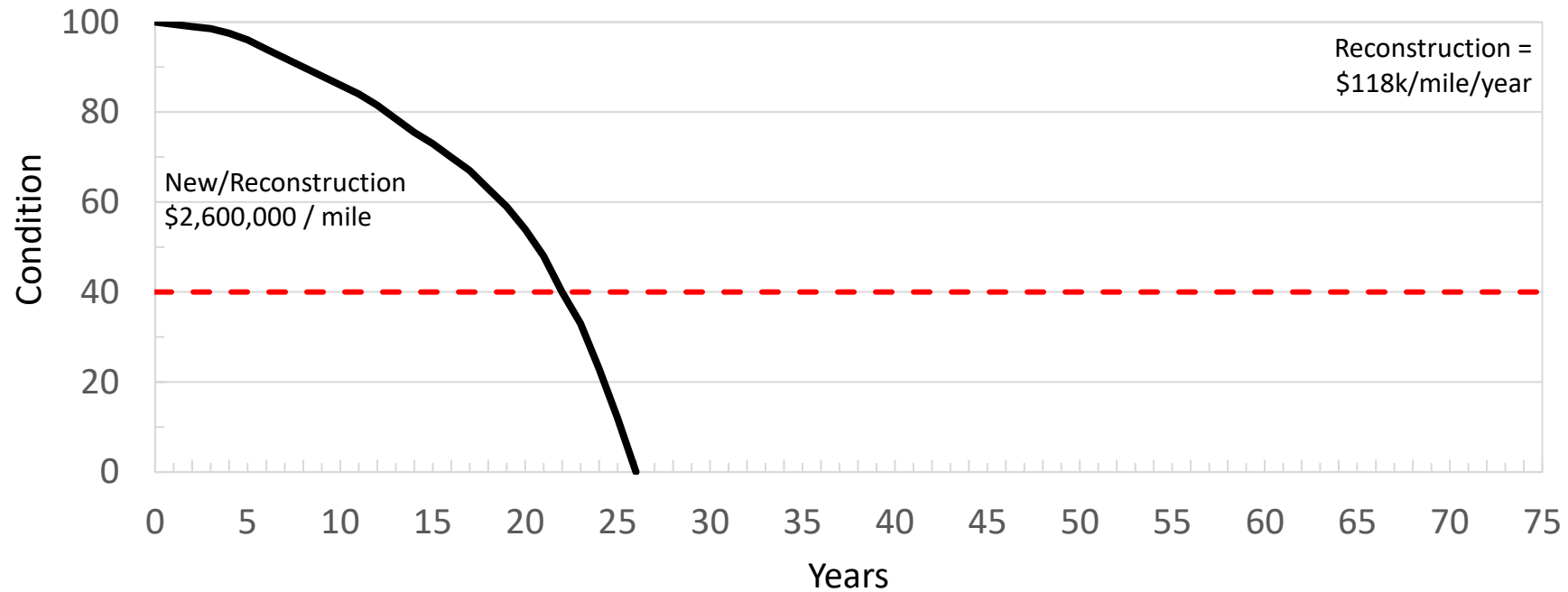
# LOWEST LIFE CYCLE COST (LLC)

- Federal requirement
- Manage assets over their entire life
- The right treatment to the right asset at the right time to extend the life for lowest practicable cost
- Maximize life, minimize costs
- LLCC  $\neq$  worst first (at the network level)

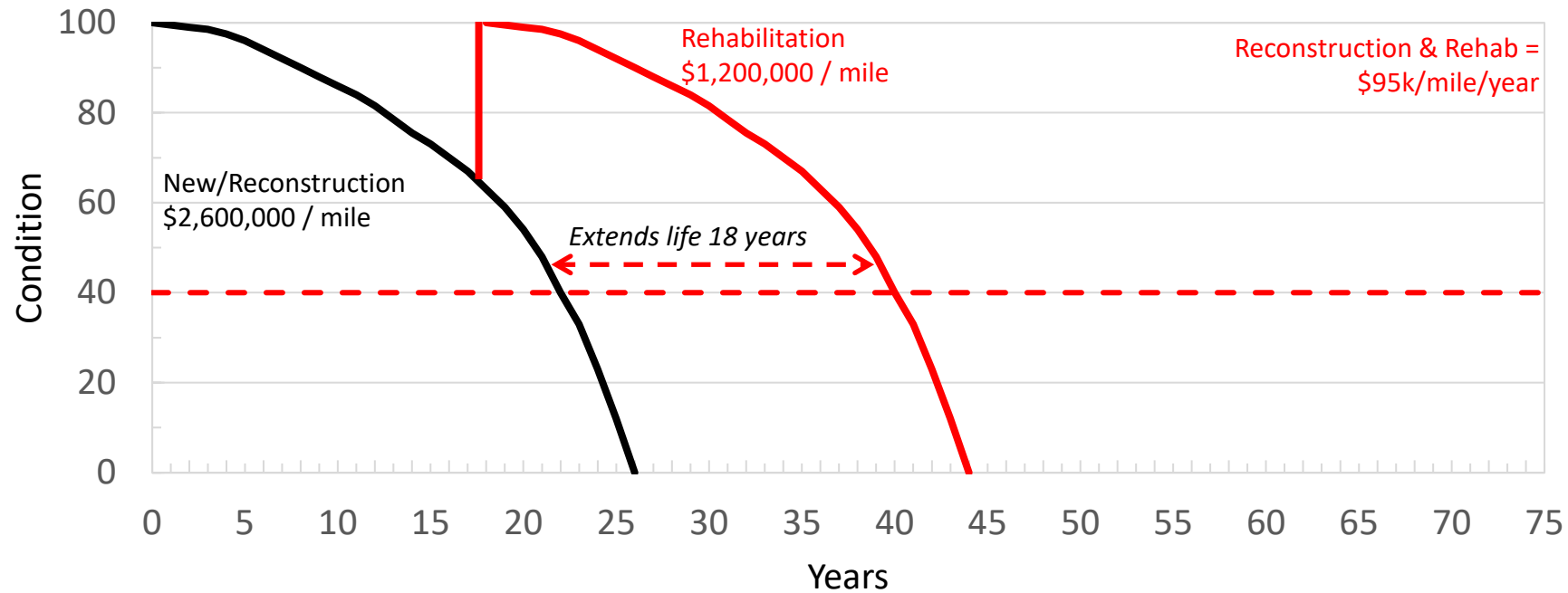




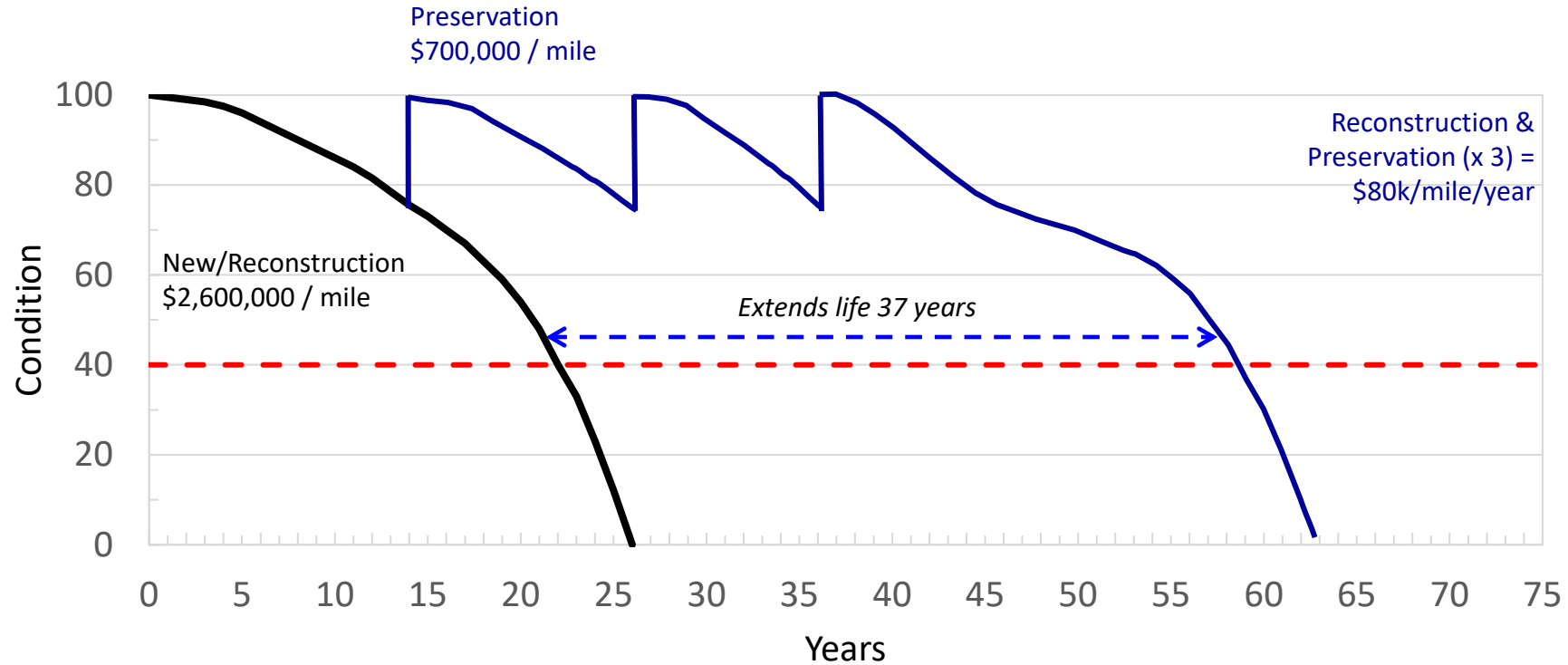
# LOWEST LIFE CYCLE COST (LLC)



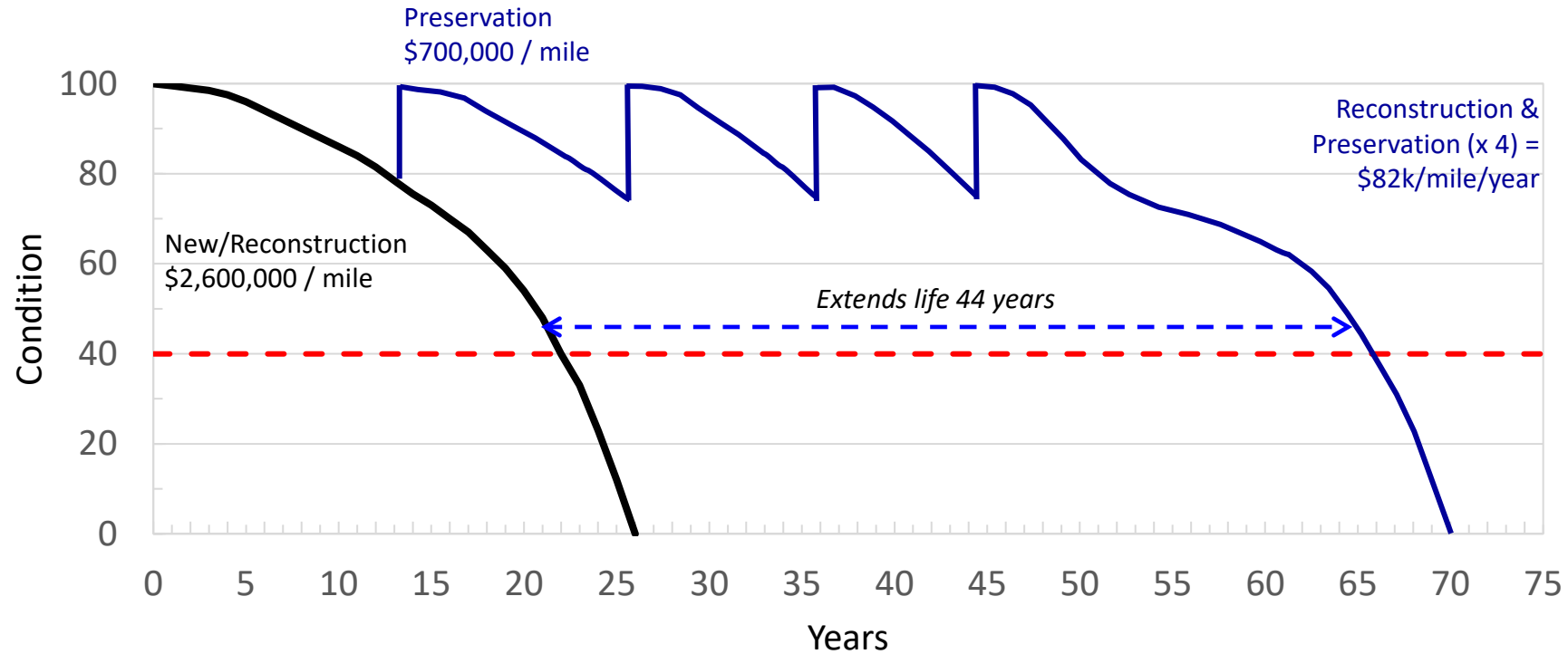
# LOWEST LIFE CYCLE COST (LLC)



# LOWEST LIFE CYCLE COST (LLC)



# LOWEST LIFE CYCLE COST (LLC)



# 2023 TIP FINANCIAL GUIDANCE

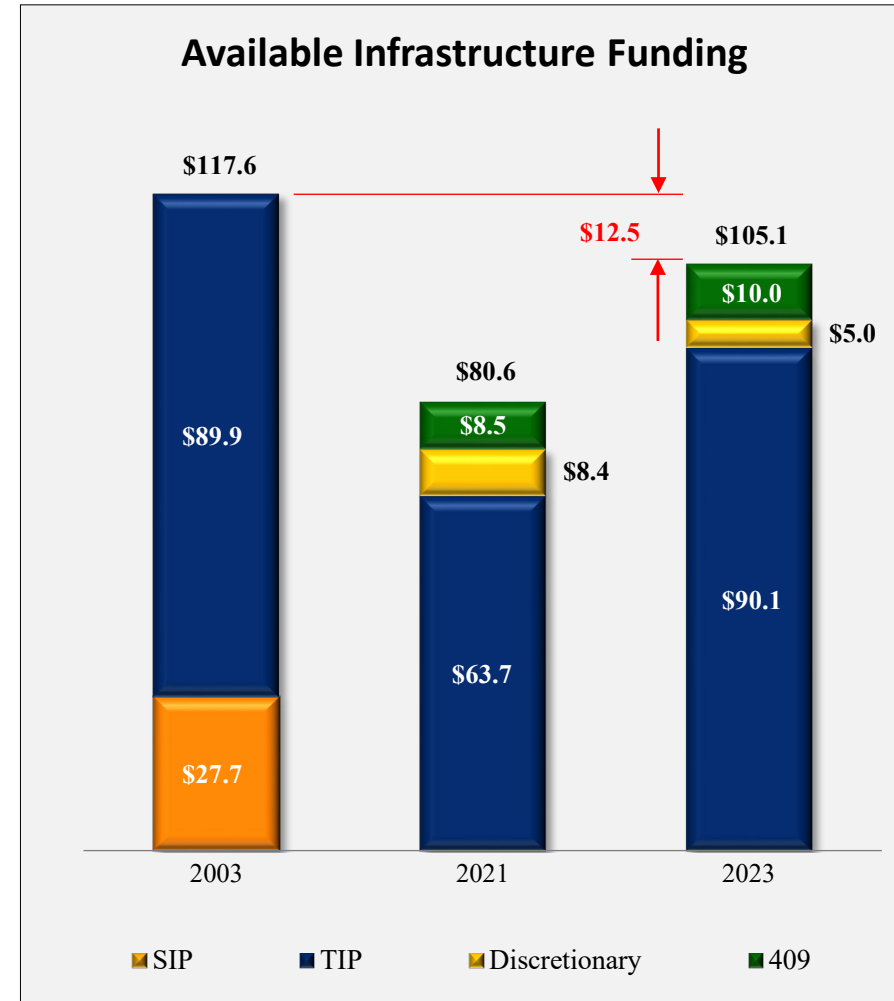
	Original Guidance FFY 2023-2026 (\$000's)	BIL Estimates FFY 2023-2026 (\$000's)*	Increase (\$000's)	Increase (%)
Blair MPO	\$44,750	\$66,492	\$21,742	48.59%
Cambria MPO	\$65,669	\$95,500	\$29,831	45.43%
S Alleghenies RPO	\$134,284	\$198,598	\$64,314	47.89%
District 9	<b>\$244,703</b>	<b>\$360,590</b>	<b>\$115,887</b>	<b>47.36%</b>

\* Does not include Carbon Reduction Program (CRP) Funds



# INFLATION IMPACTS

- Inflation impacts in 2022:
  - Bid Prices
    - 9.3% increase
  - 2022 vs 2021 Construction Season Prices (Based on average prices April – October)
    - Asphalt Index adjustments – 45.5% increase
    - Diesel Index prices – 95.5% increase
  - 2022 vs 2021 Maintenance costs
    - Sealcoat Oil - 16% increase
    - Sealcoat Stone - 25% increase
    - Salt prices - 15% increase
- Available funding in 2023
  - TIP funds increased 41.4% between 2023 and 2021 TIPs due to Bipartisan Infrastructure Law (BIL)



# DISTRICT 9 2023 TIP PROGRAM SUMMARY

	Total		Roadway			Bridge		
	\$000s	#	\$000s	#	%	\$000s	#	%
<b>Blair MPO</b>	\$ 66,492	62	\$ 36,679	22	55.2%	\$ 29,813	40	44.8%
<b>CCMPO</b>	\$ 95,500	58	\$ 60,645	28	63.5%	\$ 34,855	30	36.5%
<b>S Alleghenies</b>	\$ 198,598	121	\$ 104,605	35	52.7%	\$ 93,993	86	47.3%
<b><i>District 9-0</i></b>	<b>\$ 360,590</b>	<b>241</b>	<b>\$ 201,929</b>	<b>85</b>	<b>56.0%</b>	<b>\$ 158,661</b>	<b>156</b>	<b>44.0%</b>

*Does not include Carbon Reduction Program (CRP) Funds*



# STATE ROADS AND BRIDGES – DISTRICT 9



Note: US 219 projects are not included





## 2025 Transportation Improvement Program Update



# TRANSPORTATION IMPROVEMENT PROGRAM

- Federal Requirement
- Detail of every project over the next 4 years
- 1<sup>st</sup> 4-years of Twelve-Year Program
- Developed and managed by Metropolitan and Rural Planning Organizations
- Fiscally constrained by year
- Public Involvement requirements
- Updated every 2 years



# 2025 TIP UPDATE DISTRICT 9-0

- Carryover projects
- Transportation Investment Plan
- MPO/RPO and PENNDOT review the candidate list for possible inclusion in the program
  - Asset Management
    - Bridge
    - Roadway
    - Geotech
  - Safety
  - Long Range Transportation Plan
  - Other studies
- Planning Partners and PENNDOT review project information and establish project priorities
- PennDOT Connects: Every Project



# 2025 PROGRAM UPDATE

- **Public Input**

- TYP input is solicited bi-annually through the State Transportation Commission in odd years
  - Comments being accepted through April 30, 2023
  - Online Public Forum April 12, 2023
- TIP project needs are solicited via County Planning Commission every other year

- **FFY 2025 TIP**

- Spring of 2023: Local priorities are submitted via Planning Partners for consideration on the Draft TIP
- December 2023: Draft TIPs developed
- Summer of 2024: Public Comment Period
- October 1, 2024: TIP takes effect



# ADDITIONAL INFORMATION

For additional information on TIP Priorities:

**Justin Evans**

Planning and Mapping Director

Fulton County Planning Commission

814-485-3717

[planning@co.fulton.pa.us](mailto:planning@co.fulton.pa.us)



# FULTON COUNTY CONSTRUCTION PROJECTS

VINCENT S. GREENLAND, P.E.  
ACTING DISTRICT EXECUTIVE

# **AWARDED CONTRACTS**

# ROUTE 1001: ROUTE 522 TO ROUTE 16



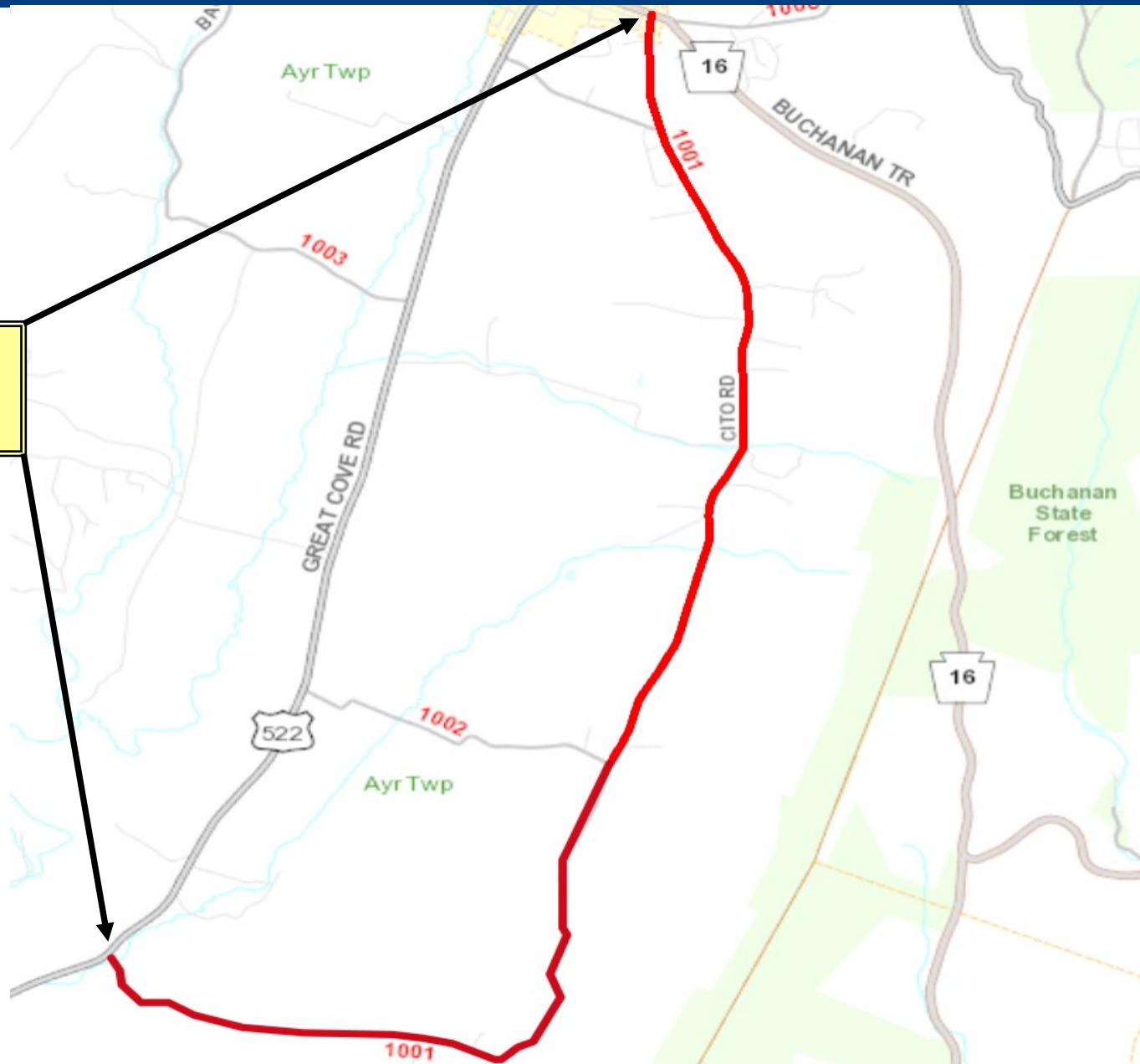
- **Scope:** Resurfacing and Safety Improvements (7.6 Miles)
- **Traffic Control:** Daylight Flagging
- **Construction Timeframe:** May 2023 – Oct 2023
- **Contractor:** P&W Excavating, Inc.
- **Current Contract:** \$2,783,992





# ROUTE 1001: ROUTE 522 TO ROUTE 16

**Route 1001 (Cito Road)**  
**from Route 522 to Route 16**  
Ayr Township



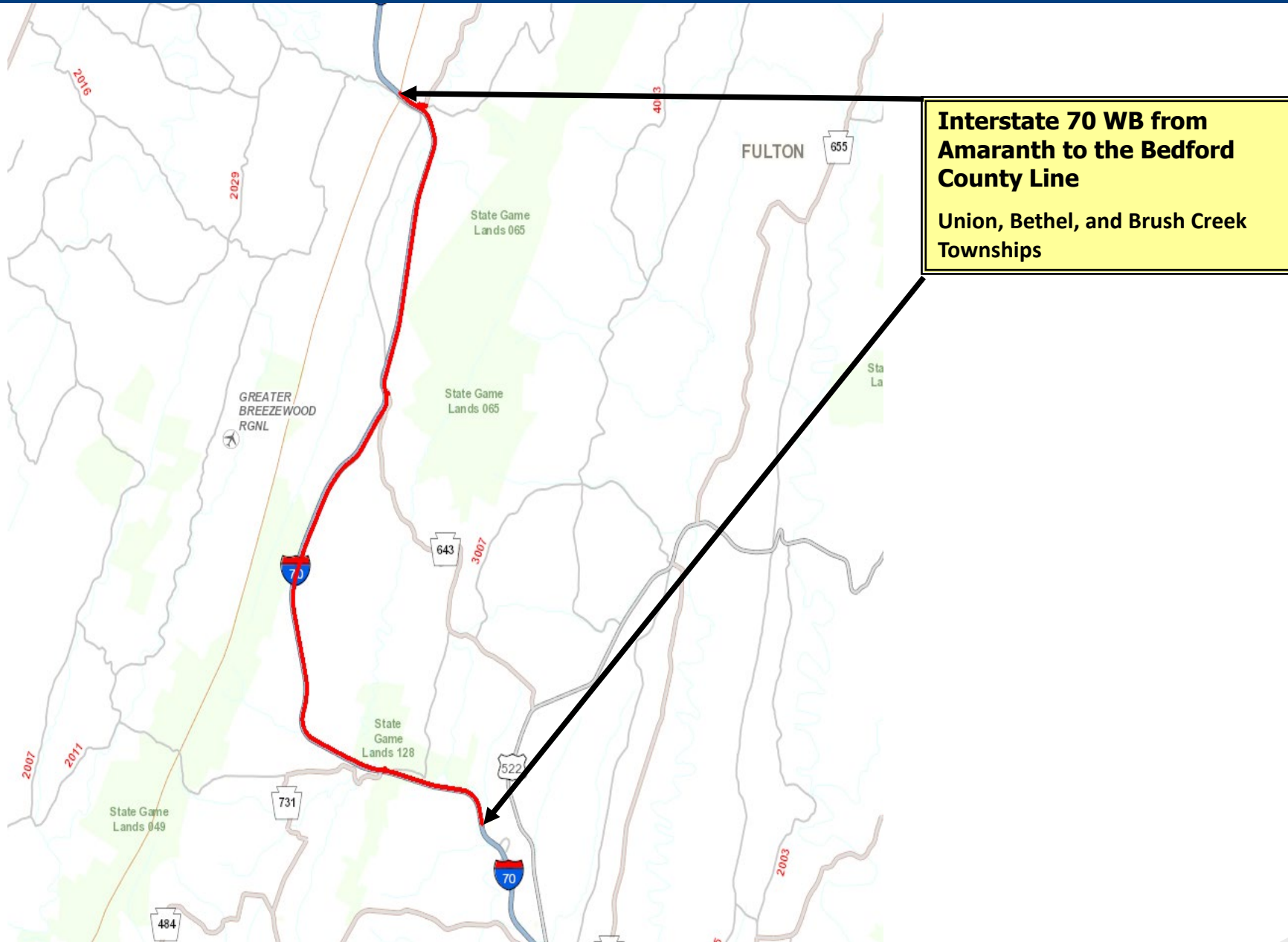
## I-70: WB AMARANTH TO BEDFORD COUNTY LINE



- **Scope:** Resurfacing, Structure Rehabilitation and Replacement, Drainage and Guiderail Upgrades (14.8 miles)
- **Traffic Control:** Long Term Traffic Control - Phased
- **Construction Timeframe:** Apr 2022 – Nov 2023
- **Contractor:** New Enterprise Stone & Lime Co., Inc.
- **Current Contract:** \$12,103,368



# I-70: WB AMARANTH TO BEDFORD COUNTY LINE





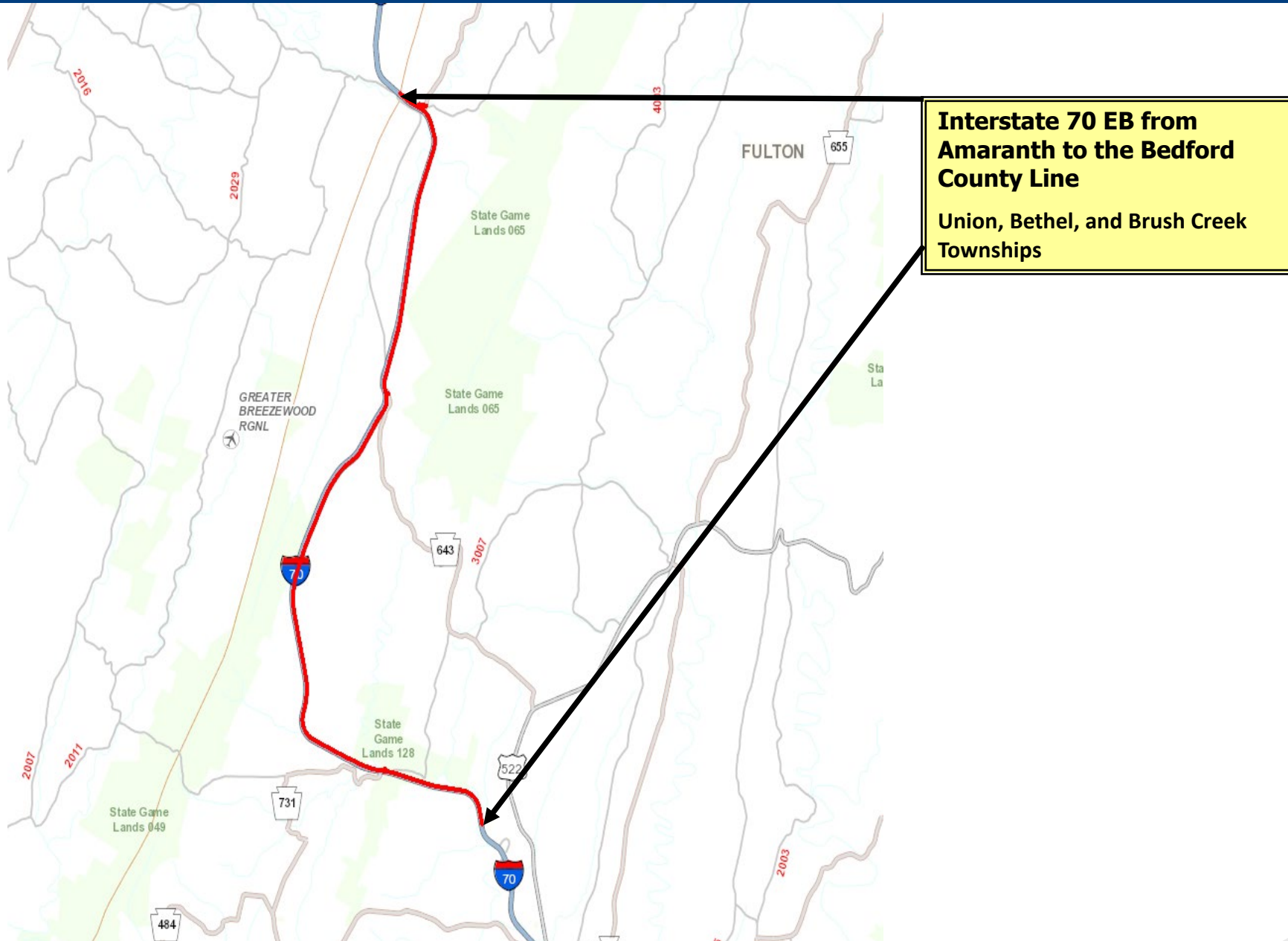
## I-70: EB AMARANTH TO BEDFORD COUNTY LINE



- **Scope:** Resurfacing, Structure Rehabilitation and Replacement, Drainage and Guiderail Upgrades (14.8 miles)
  - Let with I-70 Amaranth to MD Line
- **Traffic Control:** Long Term Traffic Control - Phased
- **Construction Timeframe:** May 2023 – Aug 2027
- **Contractor:** New Enterprise Stone & Lime Co., Inc.
- **Current Contract:** \$ 30,900,000



# I-70: EB AMARANTH TO BEDFORD COUNTY LINE



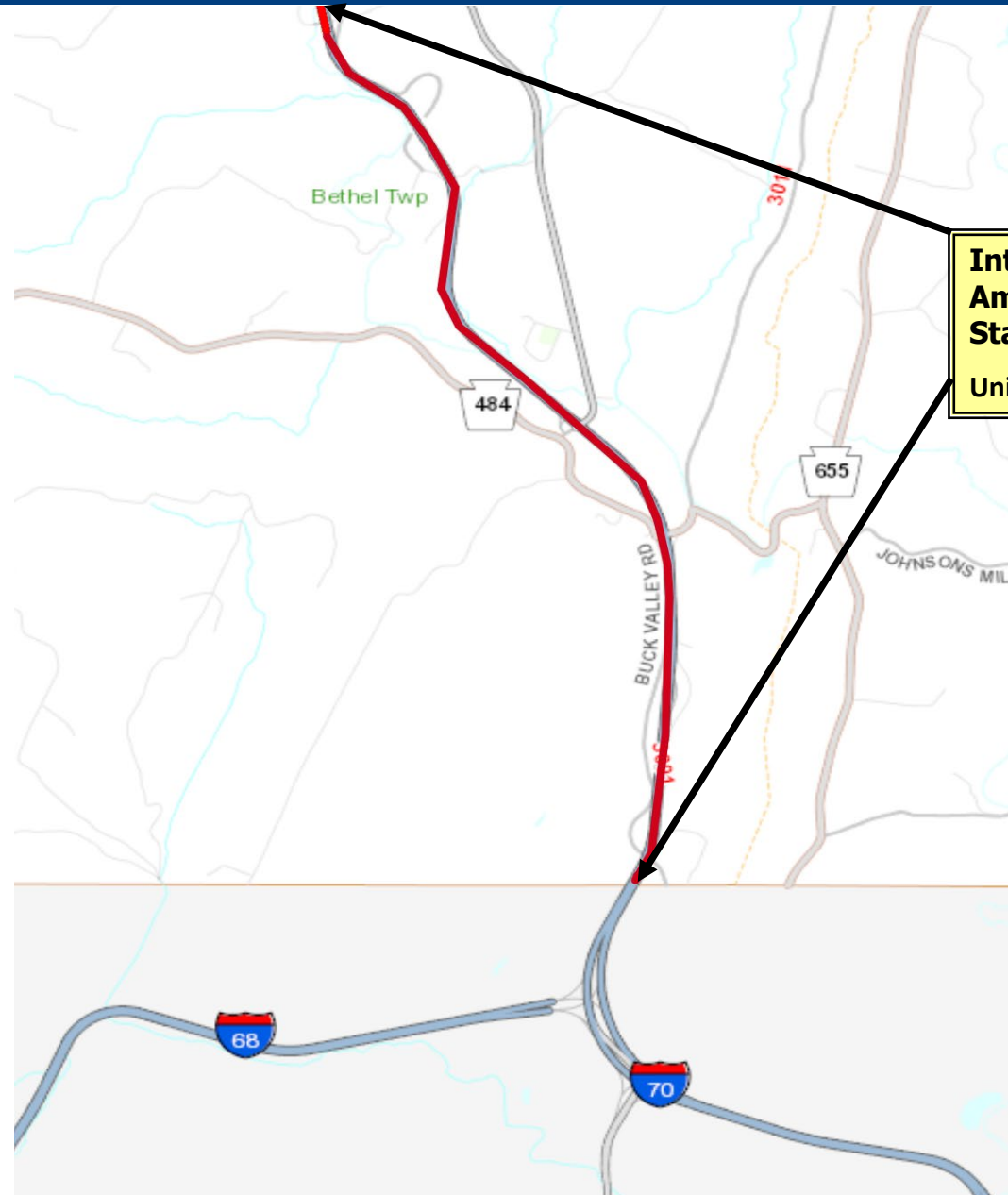
# I-70: AMARANTH INTERCHANGE-MARYLAND STATE LINE



- **Scope:** Resurfacing, Structure Rehabilitation and Replacement, Drainage and Guiderail Upgrades (5.0 miles)
  - Let with I-70 EB Amaranth to Bedford Line
- **Traffic Control:** Long Term Traffic Control - Phased
- **Construction Timeframe:** May 2023 – Aug 2027
- **Contractor:** New Enterprise Stone & Lime Co., Inc.
- **Current Contract:** \$ 30,900,000

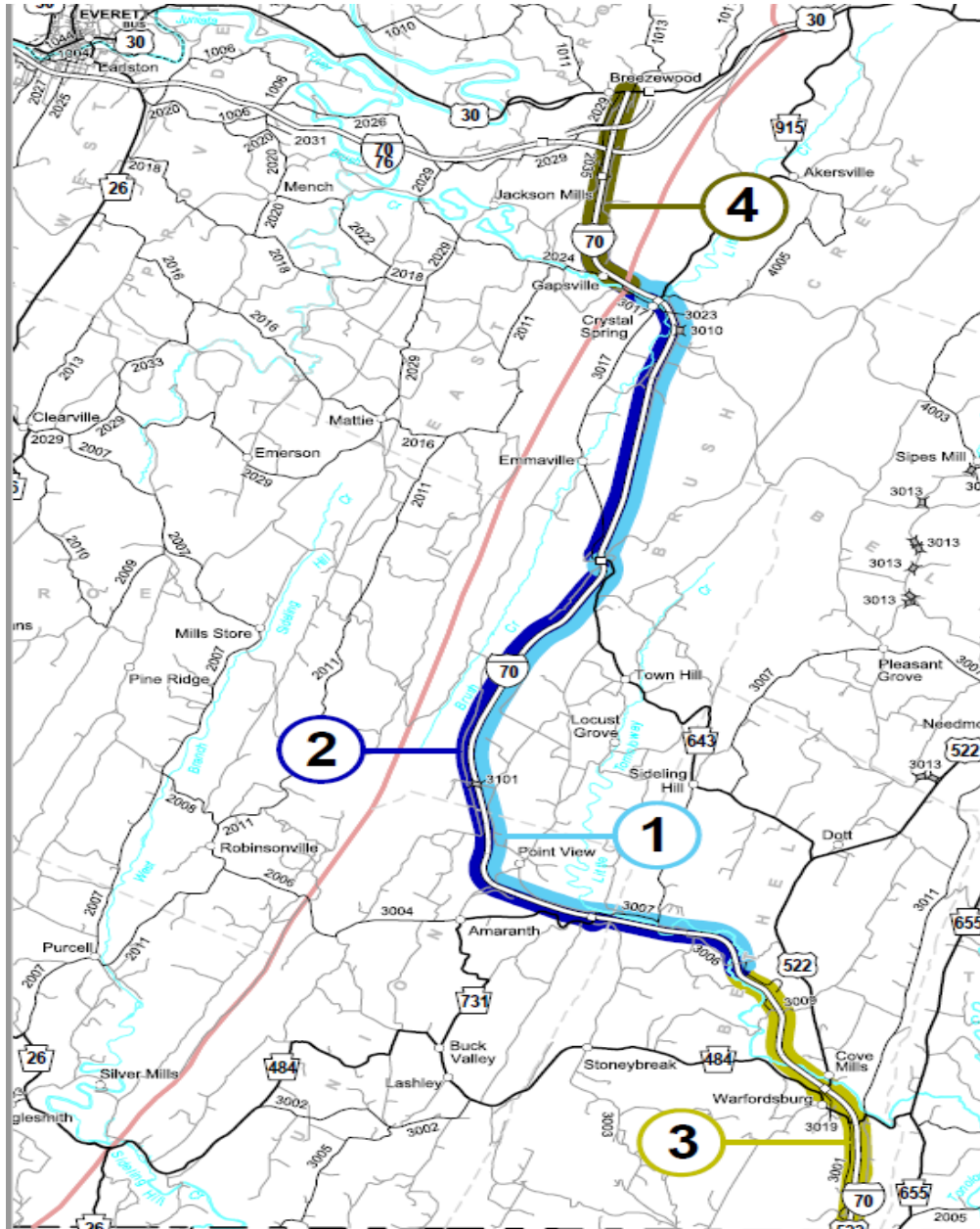


# I-70: AMARANTH INTERCHANGE-MARYLAND STATE LINE





# I-70 PROJECTS



1. WB Amaranth to Bedford County Line, Completion in Fall 2023 - \$12.1 million
2. EB Amaranth to Bedford County Line, Summer 2023 to Fall 2027 - \$19.4 million
3. Amaranth to MD Line, Summer 2023 to Fall 2027 - \$11.5 million
4. Breezewood to Fulton County Line, Completion in Fall 2023 - \$20.8 million





# CONTRACTS TO BE BID

# ROUTE 522: ROUTE 30 TO PA TURNPIKE

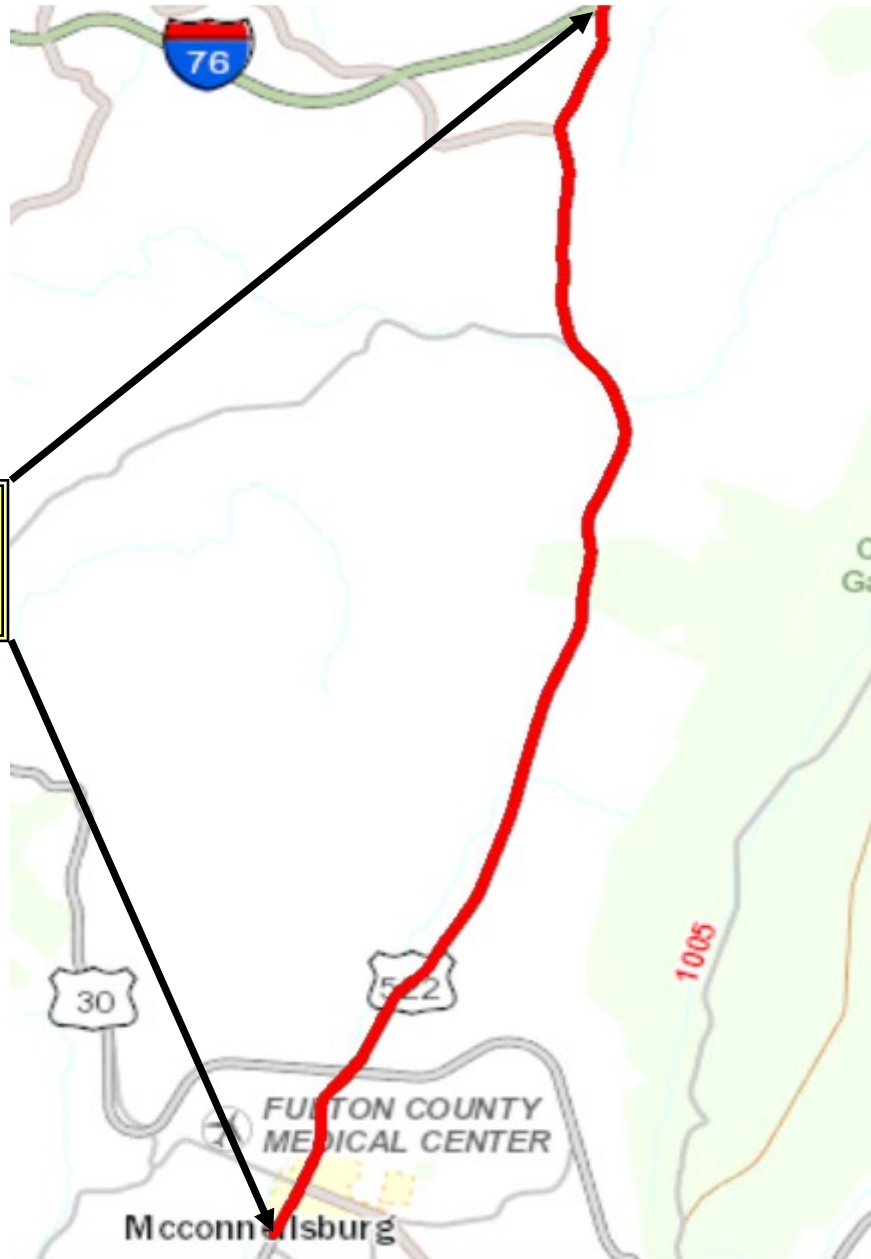


- **Scope:** Resurfacing and Safety Improvements (8.8 miles)
- **Traffic Control:** Daylight Flagging
- **Construction Estimate:** 5 to 10 Million
- **Anticipated Bid Opening:** 3<sup>rd</sup> Quarter of 2023



# ROUTE 522: ROUTE 30 TO PA TURNPIKE

**Route 522 from Route 30 to  
PA Turnpike**  
Ayr, Todd, and Dublin Townships



# *Thank You*

Questions?

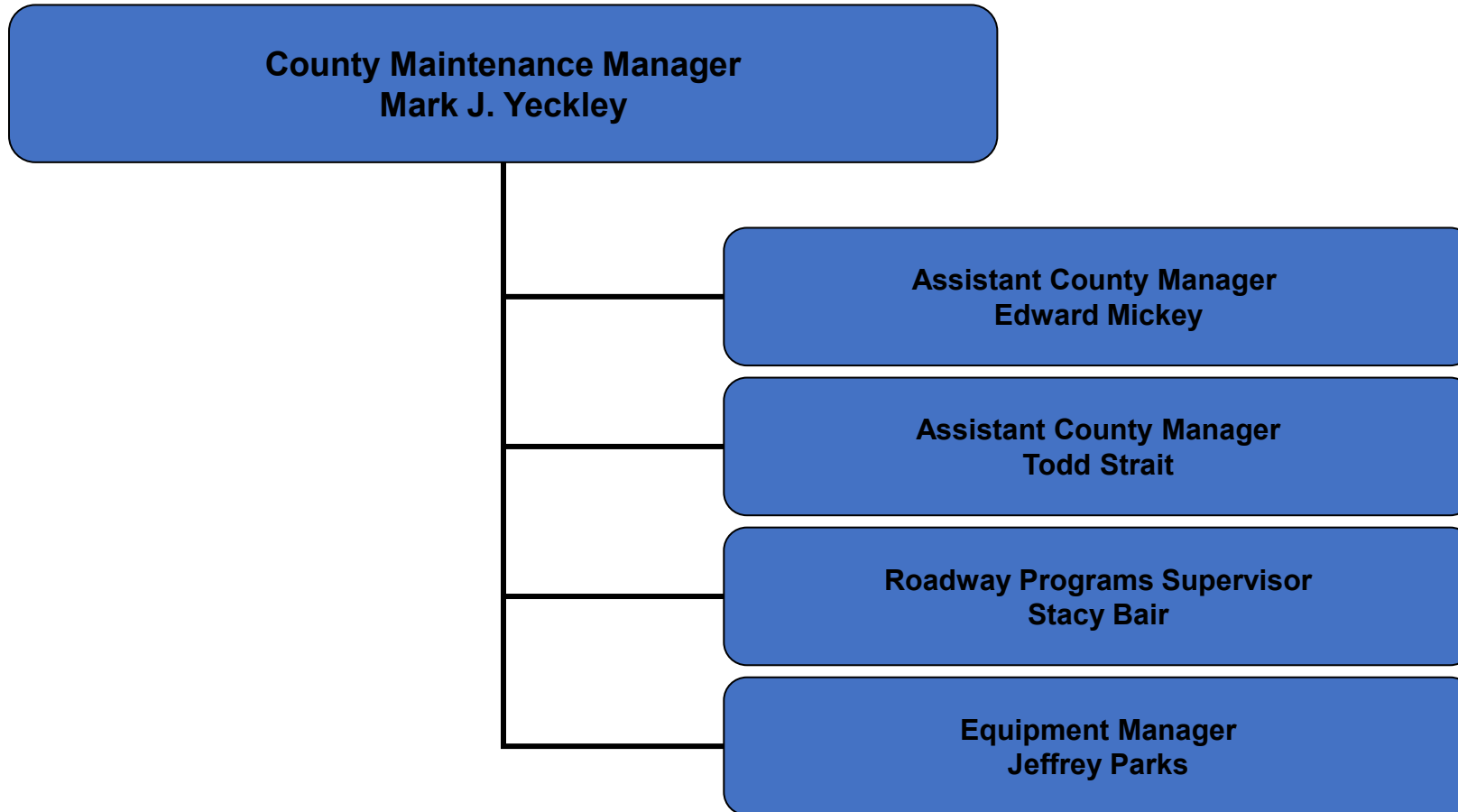




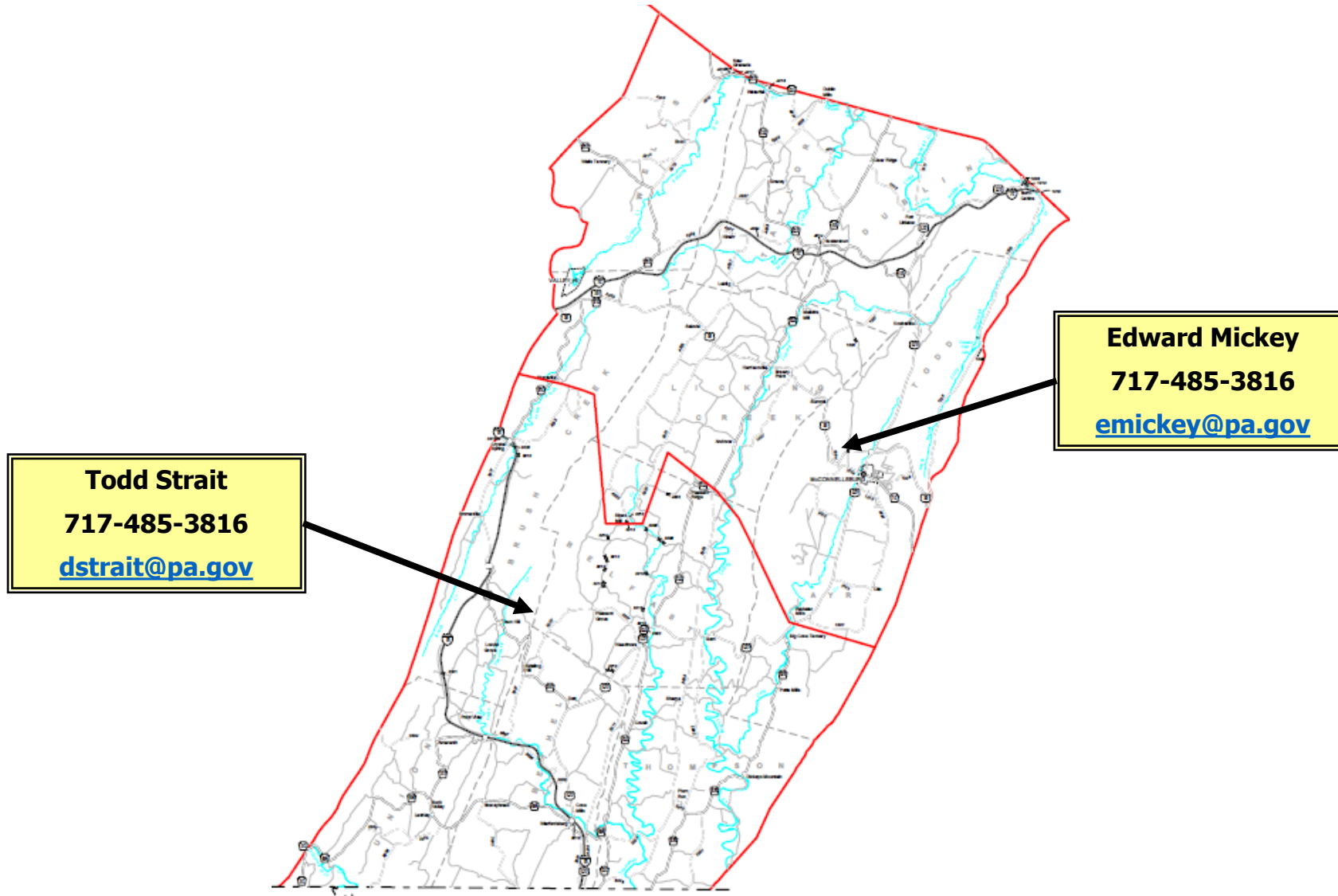
# FULTON COUNTY MAINTENANCE ACTIVITIES

DAVID KAMMERER, P.E., ADE - MAINTENANCE  
MARK J. YECKLEY, COUNTY MANAGER

# FULTON COUNTY STAFF



# WHO TO CONTACT IN YOUR AREA



No Winter Municipal Service Agreements  
at this time.

Avg. Rate - \$ 1,427 / mile



5 Year Department Winter Material Usage & Cost\*

	2018	2019	2020	2021	2022
SALT (tons)	6,639	2,434	4,954	3,850	3,085
SKID (tons)	9,125	2,913	6,773	4,079	2,869
BRINE (gals)	111,043	39,483	105,201	89,383	94,754
COST (000's)	\$ 2,132	\$1,896	\$2,481	\$2,175	\$2,256

\*as of 3/23/23





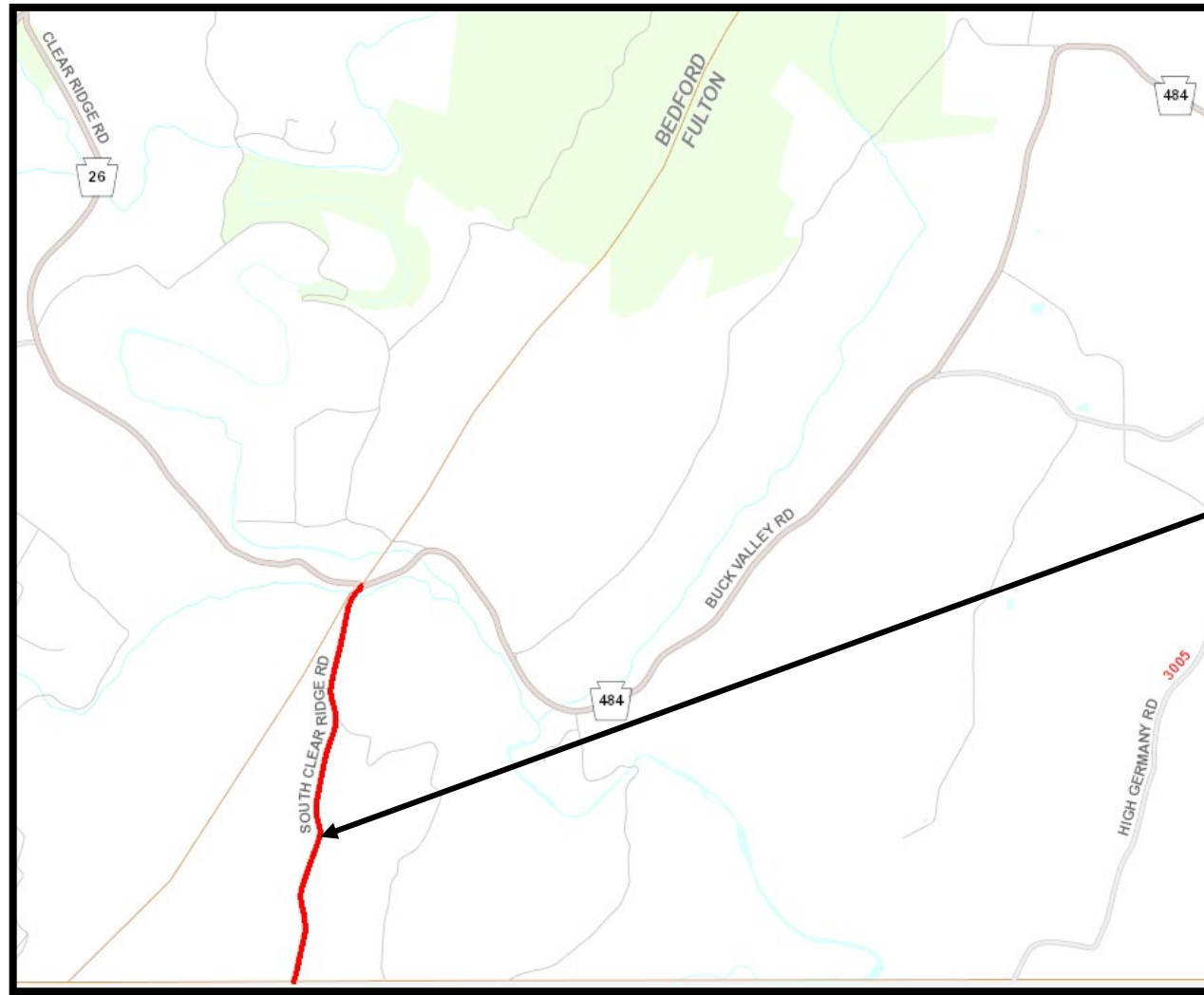
# PUTTING MONEY ON THE ROAD

## 2023 Department Force Work Summary

- **Seal Coating**
  - 20.03 miles on 5 routes
  - Estimated Cost - \$ 449,044



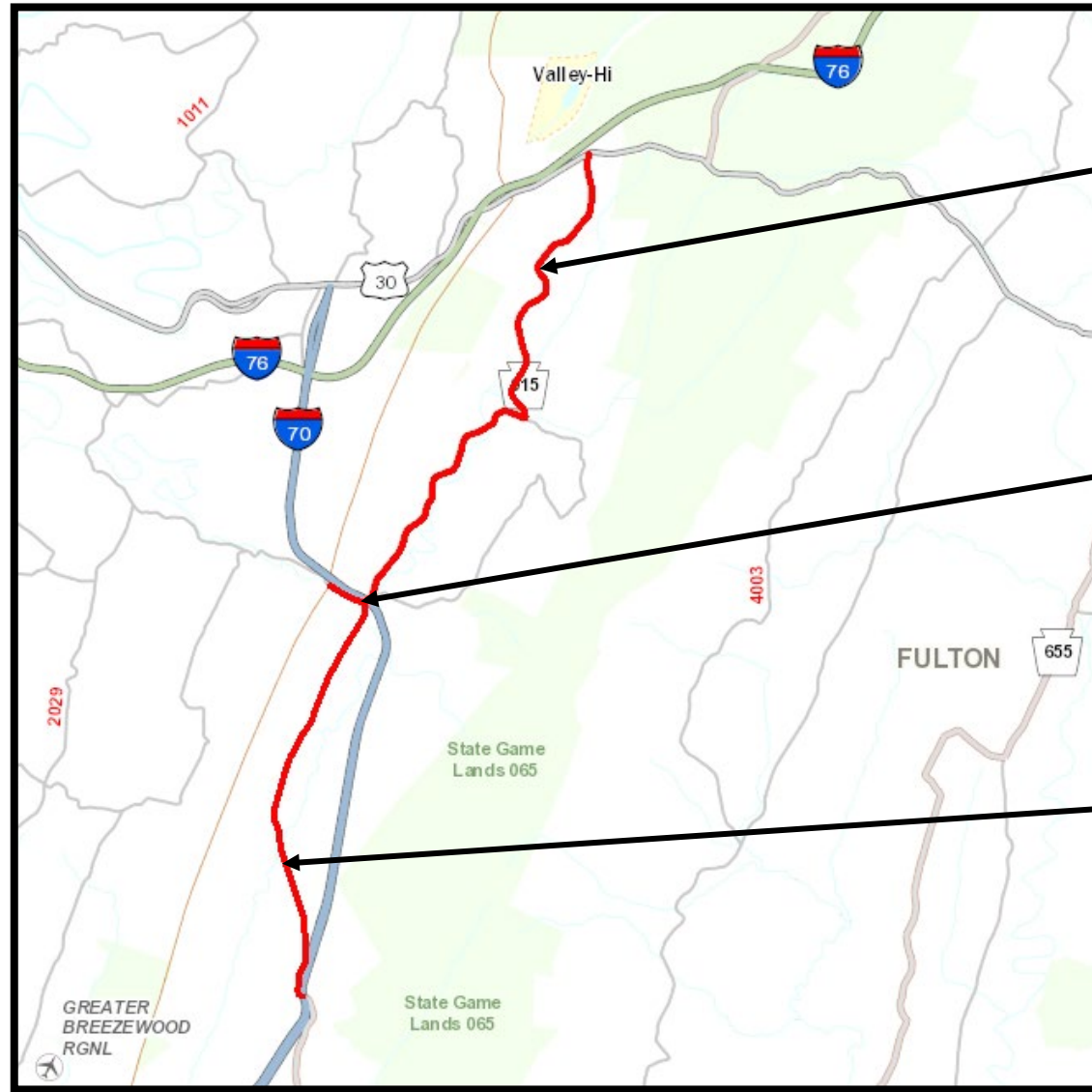
# 2023 DEPARTMENT FORCE SEAL COATING



**Route 26  
South Clear Ridge  
Road  
1.38 miles**



# 2023 DEPARTMENT FORCE SEAL COATING



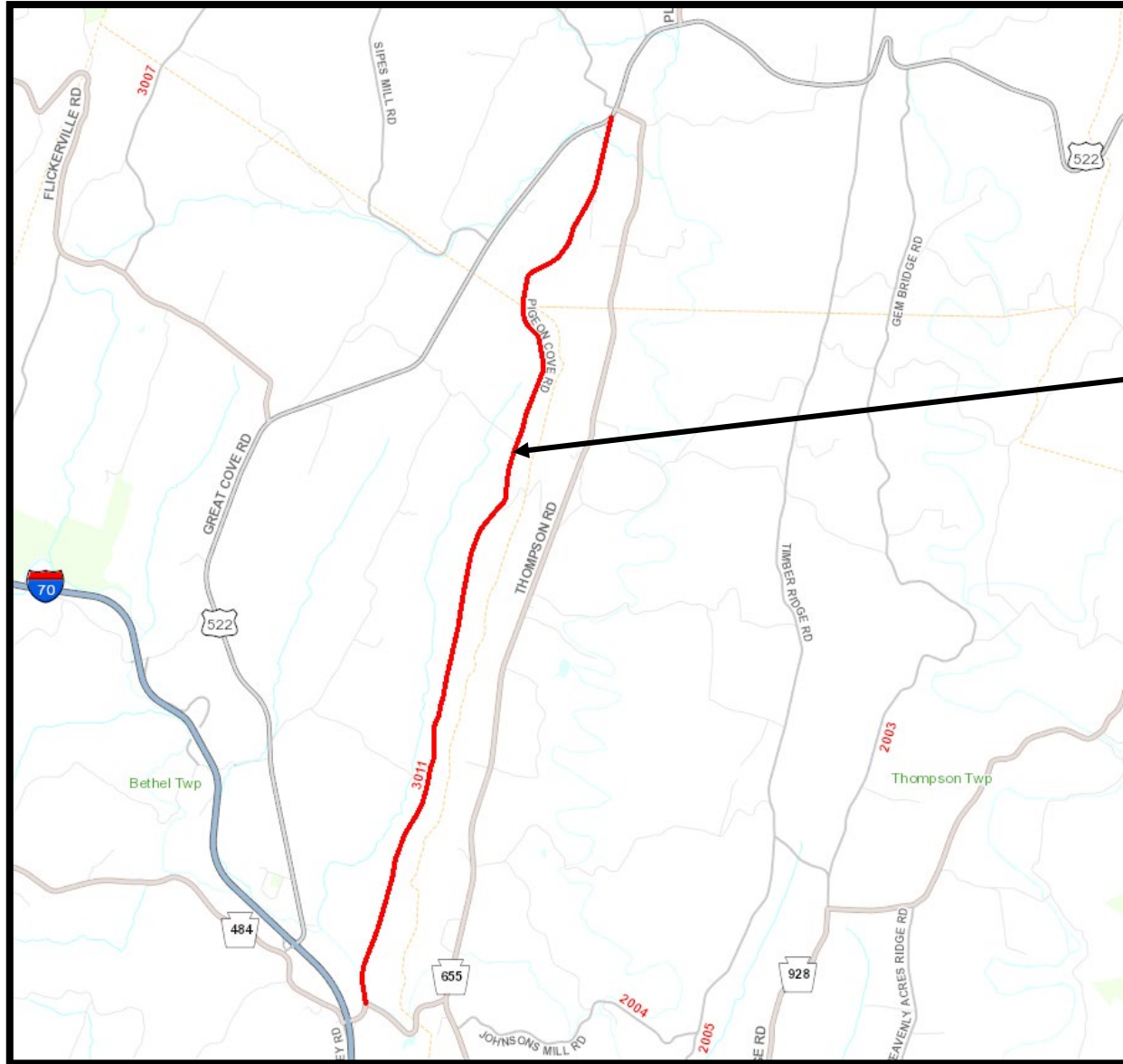
**Route 915**  
**South Valley Road**  
**6.48 miles**

**Route 3023**  
**South Valley Road**  
**0.05 miles**

**Route 3017**  
**Old 126 Road**  
**5.09 miles**



# 2023 DEPARTMENT FORCE SEAL COATING



**Route 3011  
Pigeon Cove Road  
Road  
7.03 miles**



# AGILITY AGREEMENTS

No active work plans are in place at this time



## Possible Activities

- Line Painting
- Salt Brine
- Sign Replacements
- Crack Sealing
- Shoulder Cutting
- Pipe Replacement



# ADDITIONAL COUNTY ACTIVITIES

Patching

Guiderail Repairs and Upgrades

Sign Replacements

Crack Sealing

Shoulder Cutting

Bridge Maintenance

Pipe Replacement & Flushing

Mowing



# MUNICIPAL LIQUID FUELS (MLF)

## **Municipal Liquid Fuels Allocation – Fulton County**

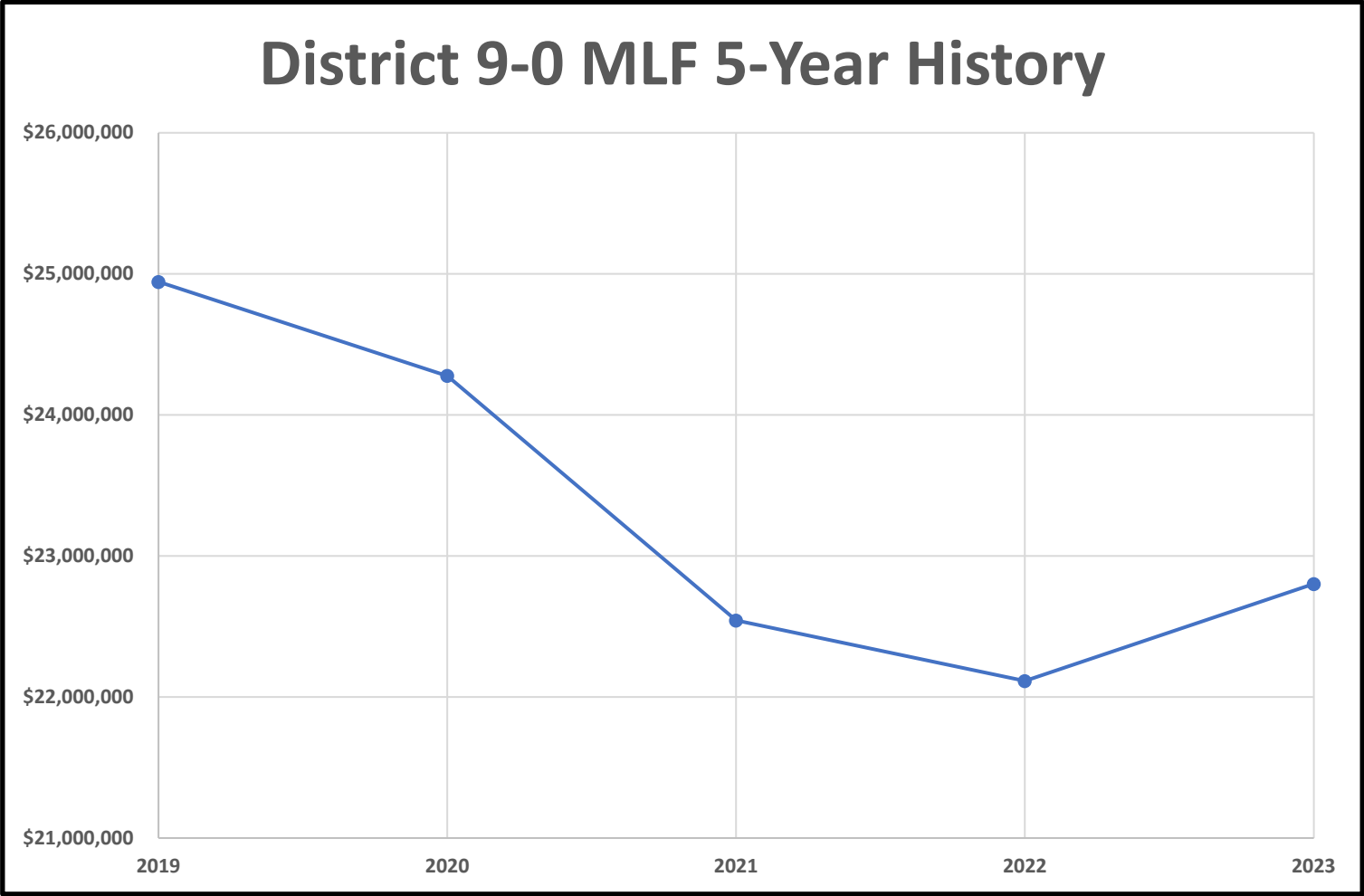
- 2022 = \$1,188,775.04
- 2023 = \$1,225,148.46
- 3% increase in MLF between 2022 and 2023

## **Statewide Municipal Liquid Fuels Allocation**

- 2022 = \$455,884,953
- 2023 = \$470,202,637



# MUNICIPAL LIQUID FUELS (MLF)





# QUESTIONS?

**THANK YOU  
FOR YOUR ATTENTION!**



# **FULTON COUNTY DESIGN OVERVIEW**

VINCE GREENLAND, P.E.  
ACTING DISTRICT EXECUTIVE

# ARC LOCAL ACCESS ROAD PROGRAM OVERVIEW

## Appalachian Regional Commission (ARC) Local Access Road (LAR) Program Purpose:

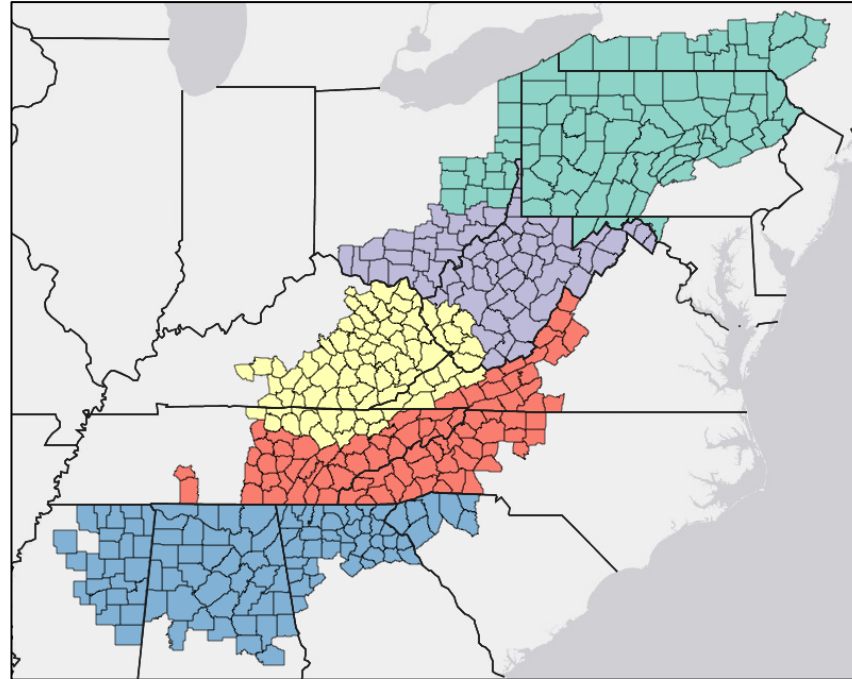
- Federal funding program that links the region's businesses, communities, and residents to the Appalachian Development Highway System as well as to other key parts of the region's transportation network

## LAR Benefits:

- Offers a flexible approach
- Provides a financing mechanism
- Meets local needs
- Supports economic development
- Links communities, businesses, and residents of the transportation network

## Eligible LAR Project Types:

- Industrial areas
- Commercial areas
- Residential developments
- Recreational areas
- Educational areas



## Appalachian Region

5 Regions, 423 Counties, 13 States

PA – 52 Counties



# ARC LOCAL ACCESS ROAD PROGRAM OVERVIEW

Funds may be used for the following phases:

- Preliminary engineering
- Right-of-way
- Construction (Initial)

However, specific items in the aforementioned phases may or may not be eligible

Funds may not be used on roadways previously built with LAR funds to:

- Resurface
- Rehabilitate
- Upgrade
- Improve Safety



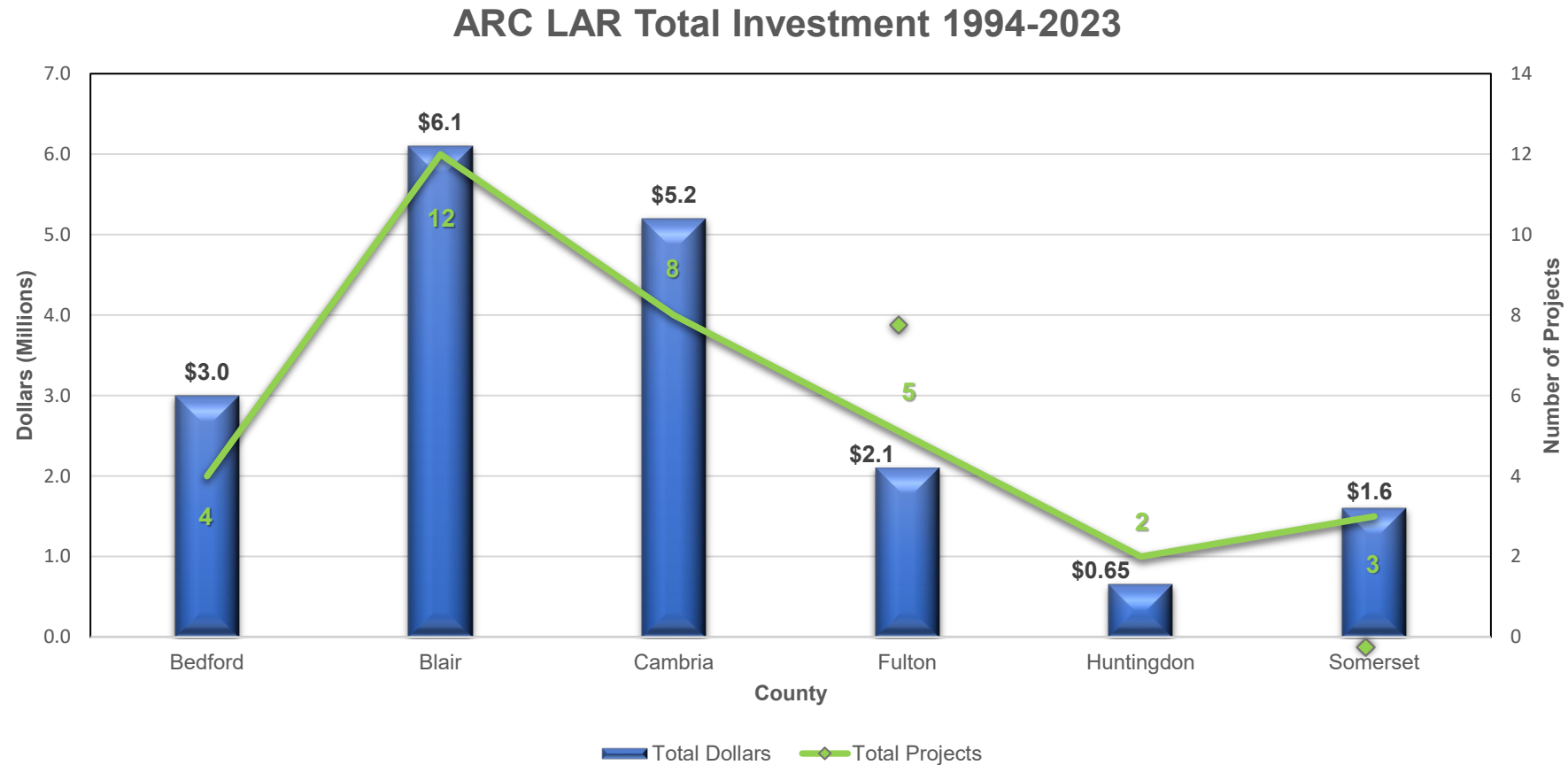
# ARC LOCAL ACCESS ROAD PROGRAM OVERVIEW

- Eligible sponsors:
  - State/Local agencies and government entities
  - Local governing boards
  - Nonprofit organizations
  - Indian tribes
  - Higher education institutes
- Ineligible Sponsors:
  - Individuals
  - For-profit entities
- There are no match requirements in Pennsylvania
- More Information:

Southern Alleghenies Planning Development Commission (SAP&DC)  
Mr. Brandon Peters  
(814) 949-6500  
[sapdc.org](http://sapdc.org)



# ARC LOCAL ACCESS ROAD PROGRAM OVERVIEW



District 9-0 Total Investment: \$18.7 Million on 34 projects



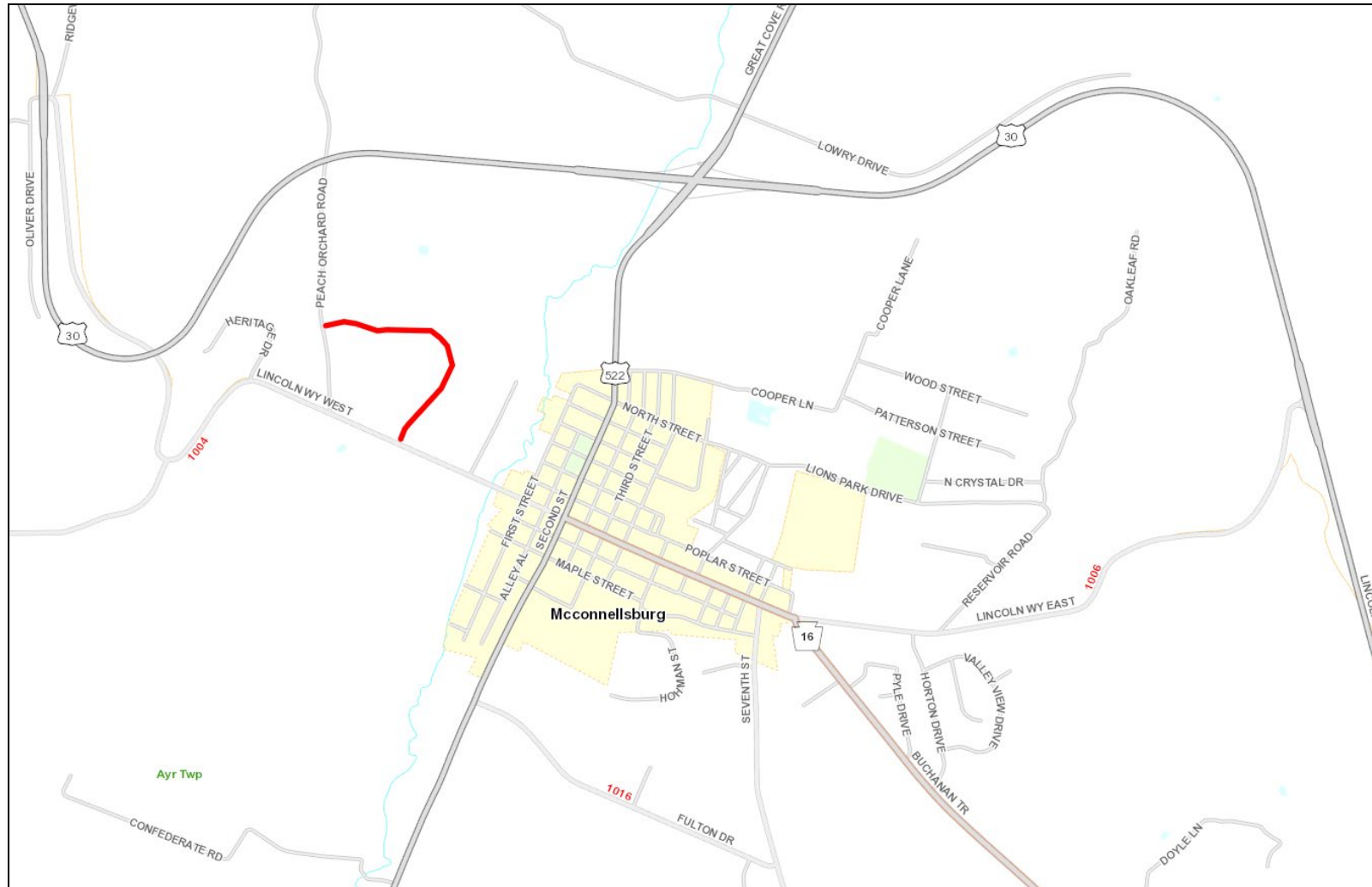
# FULTON COUNTY MEDICAL CENTER



- **Scope:** Construct new local access and road
- **Location:** At the intersection of Washabaugh Drive (T-517) and Lincoln Way West (SR 1004) in Todd Township, Fulton County
- **Award:** \$1,052,673
- **Sponsor:** Todd Township
- **Construction Complete:** Fall 2018



# FULTON COUNTY MEDICAL CENTER





# FULTON COUNTY MEDICAL CENTER

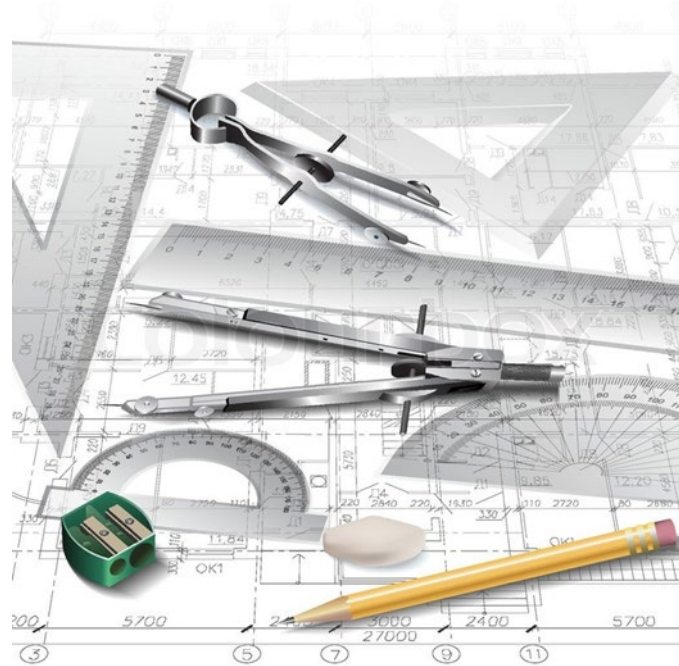




# FULTON COUNTY MEDICAL CENTER



# Current Design Projects





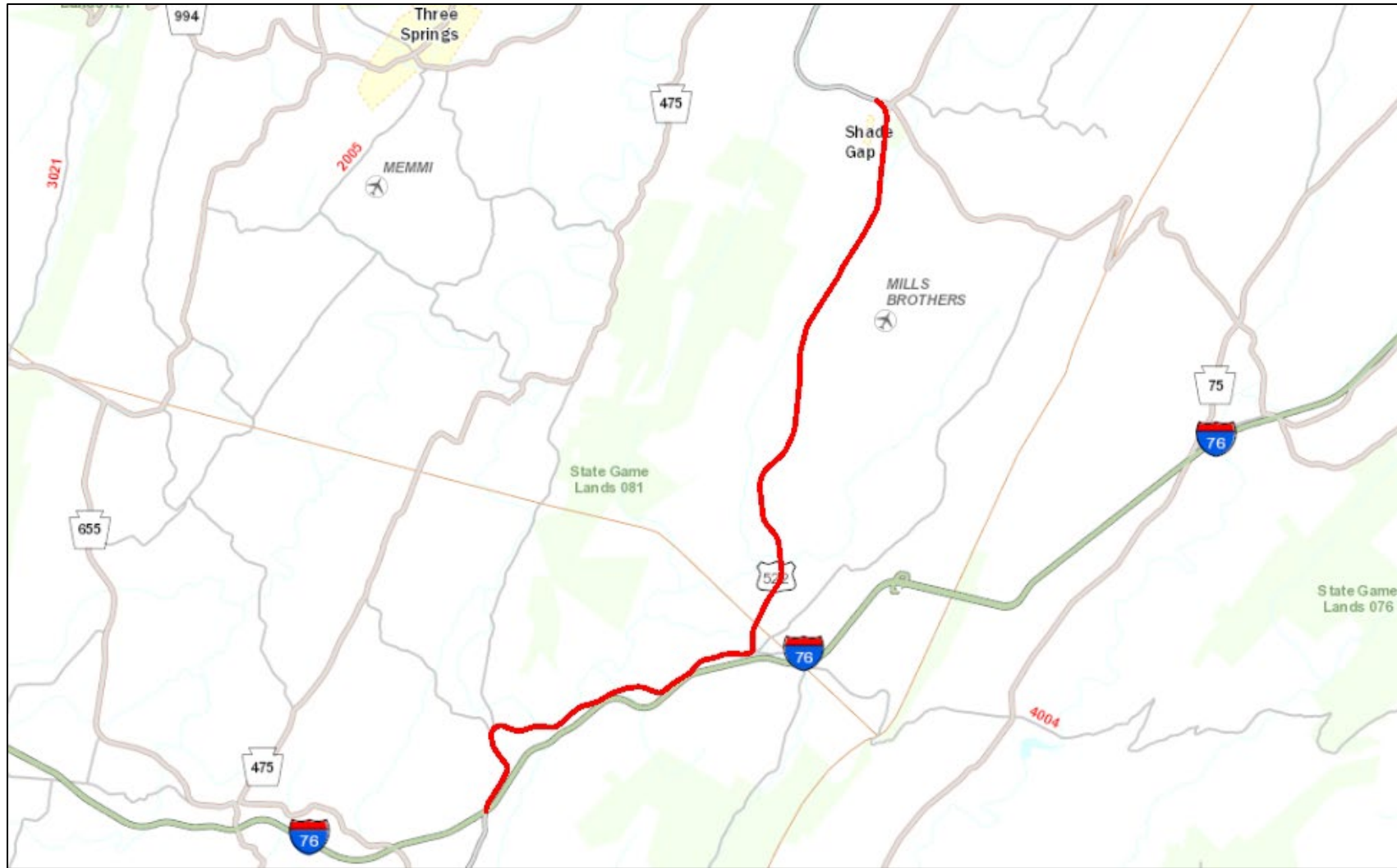
# US 522 - PA 35 / SHADE GAP TO PA TURNPIKE STUDY



- **Project Type:** Corridor Study
- **Location:** US 522 (Croghan Pike/Great Cove Road) from PA 35 (Shade Valley Road) to the Pennsylvania Turnpike in Dublin Township, Huntingdon and Fulton Counties.
- **Cost Estimate:** \$250,000
- **Anticipated Completion Date:** 2<sup>nd</sup> Quarter 2023



# US 522 - PA 35 / SHADE GAP TO PA TURNPIKE STUDY



## **Evaluate Safety and Congestion/Mobility Improvements:**

- Limits of Work between PA Turnpike and PA 35 Shade Gap
- Project goal is to identify fundable, prioritized list of projects for consideration on future TIPs

## **Timeline**

- Study began spring of 2021
- Scope of work discussed with planning organizations
- Cost of study estimated at \$250,000
- 1st Public meeting held June 2021
- Received a draft corridor safety study September 2021
- 2nd public meeting held March 2023
- Final report anticipated Spring 2023

## **Issues Identified from PennDOT Connects & Planning Organizations**

- Intersection configuration of PA 35, US 522 and PA 641
- Speeding through Shade Gap Elementary School zone
- Horizontal curve alignment at Route 1012 Fort Littleton intersection
- Upgrade lane widths to accommodate freight traffic traveling from the PA Turnpike into Huntingdon County





## Site 1: SR 522 at Pennsylvania Turnpike Intersection



 Street View Location

# US 522 - PA 35 / SHADE GAP TO PA TURNPIKE STUDY

## Current Concerns

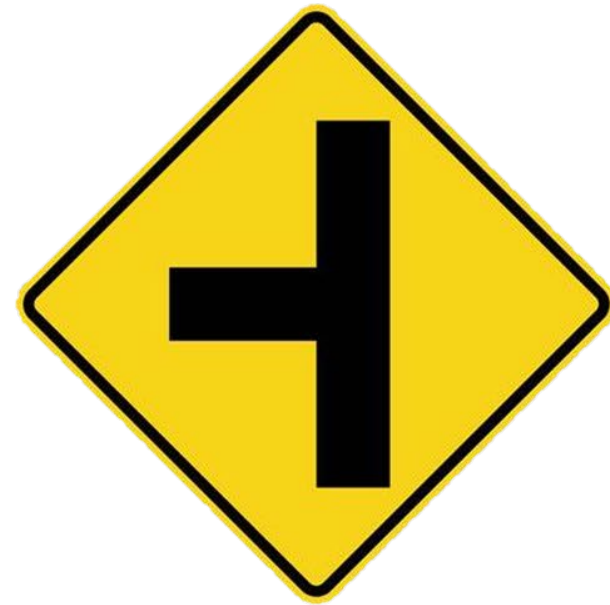
- Truck Traffic
  - Largest truck percentage in corridor.
- Large number of left turns from SR 522 South onto PA Turnpike
- Intersection visibility
  - Signing visibility
  - Intersection lighting
- Signs of rapid braking (skid marks)





## Possible short-term projects

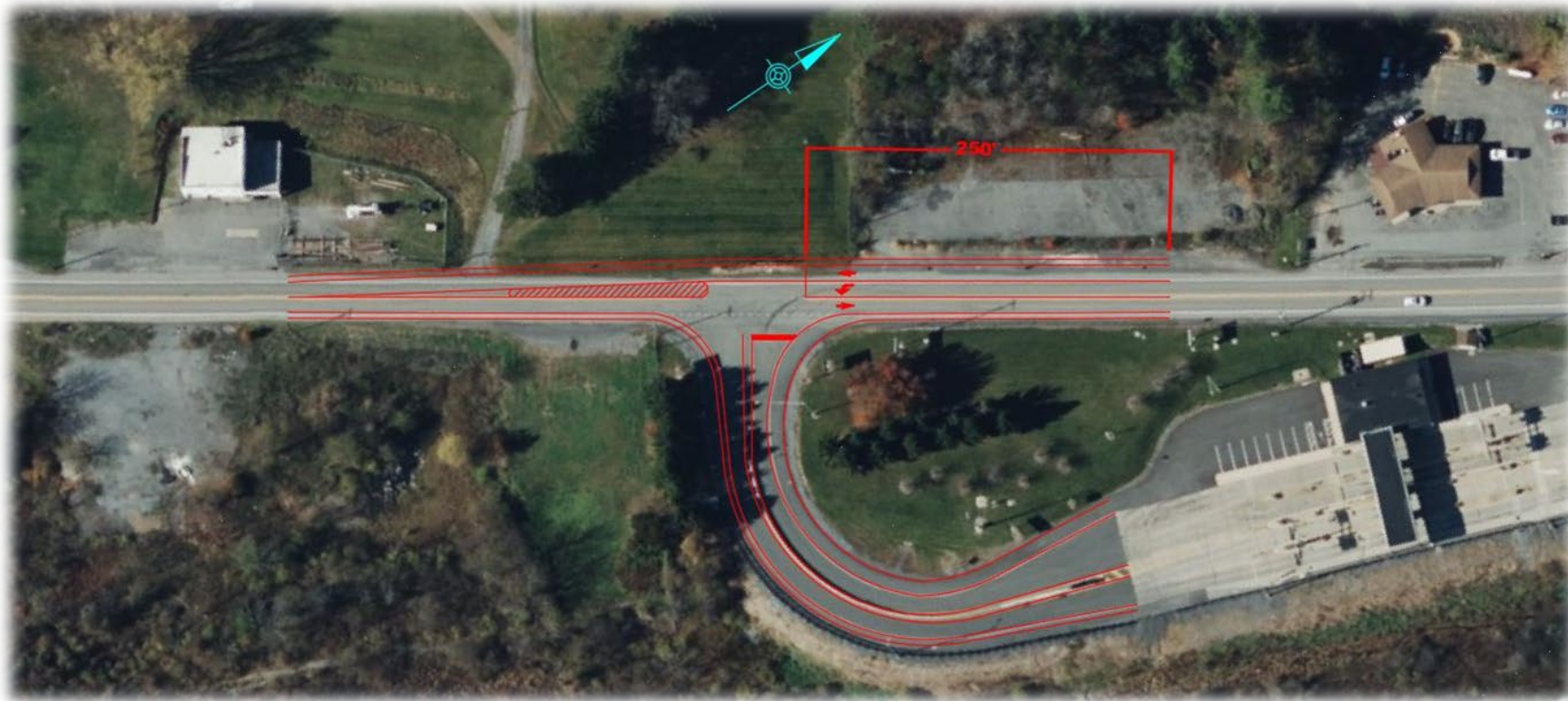
- Adjust sign placement or improve sign visibility signifying intersection
- Add advance intersection signs to improve driver awareness
- Intersection lighting on SR 522 (Lighting exists on the ramp but a light closer to the intersection could improve visibility)



# US 522 - PA 35 / SHADE GAP TO PA TURNPIKE STUDY

## Long-term project

- Left-turn lane on SB SR 522 to PA Turnpike Toll 76 to reduce queuing.



Estimated Construction Cost: \$1,500,000



## Site 2: Curve North of Pennsylvania Turnpike Intersection



 Street View Location



## Current Concerns

- Lack of guide rail
- Roadside vegetation
- Roadside hazards
  - Utility pole
  - Inlets
- Unofficial park and ride
  - Concerns with various entry points for vehicles entering the traveled way



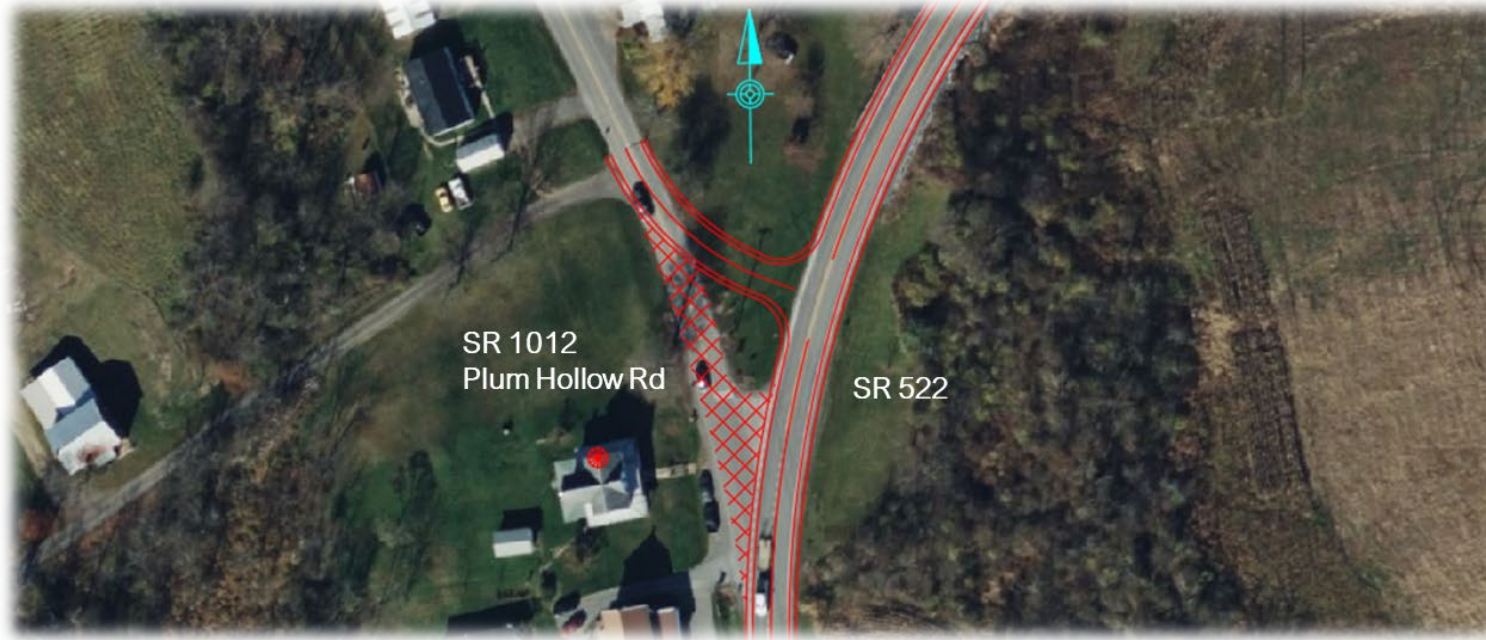
## Possible short-term projects

- Tree and shrub trimming to “open up” or allow more daylight into the curve
- Grade adjustments for existing drainage features
- Include signage or pavement markings to warn vehicles of entering or crossing traffic from unofficial park and ride on SR 522
- Increase shoulder width to four feet and add edge line rumble strips



# US 522 - PA 35 / SHADE GAP TO PA TURNPIKE STUDY

- Mid-term project
  - Reconfiguration of SR 1012 (Plum Hollow Road) to a T-intersection.
    - Would reduce rolling stops and speeding through Fort Littleton
    - Improve turning movements and sight distance at intersection
    - Could be combined with Fort Littleton long-term project



 Existing Pavement to be Removed

Estimated Construction Cost: \$1,500,000





# US 522 - PA 35 / SHADE GAP TO PA TURNPIKE STUDY

- Long-term project
  - Remove structure, close portion of T-433 (Brown Road), and improve intersection geometry of SR 1011 (Sinoquipe Road)
    - Improve sight distance and turning movements at intersection
    - Better define intersection to reduce confusion of SR 1011
    - Could be combined with Fort Littleton mid-term project



 Existing Pavement to be Removed

Estimated Construction Cost: \$1,750,000



## Site 4: Standing Stone Curves and Trail



— Standing Stone Trail

■ → Street View Location

Potential for Safety Benefit (PSB) = 0.34





# US 522 - PA 35 / SHADE GAP TO PA TURNPIKE STUDY

- Mid-term project
  - Improve SR 522 left shoulder to accommodate pedestrians and to develop a crosswalk at the Sheepskin Hollow Road intersection.
    - Stream impact studies would be needed to determine the feasibility of wider shoulder



Estimated Construction Cost: \$750,000



## Site 5: Curve North of Ninemile Run Crossing

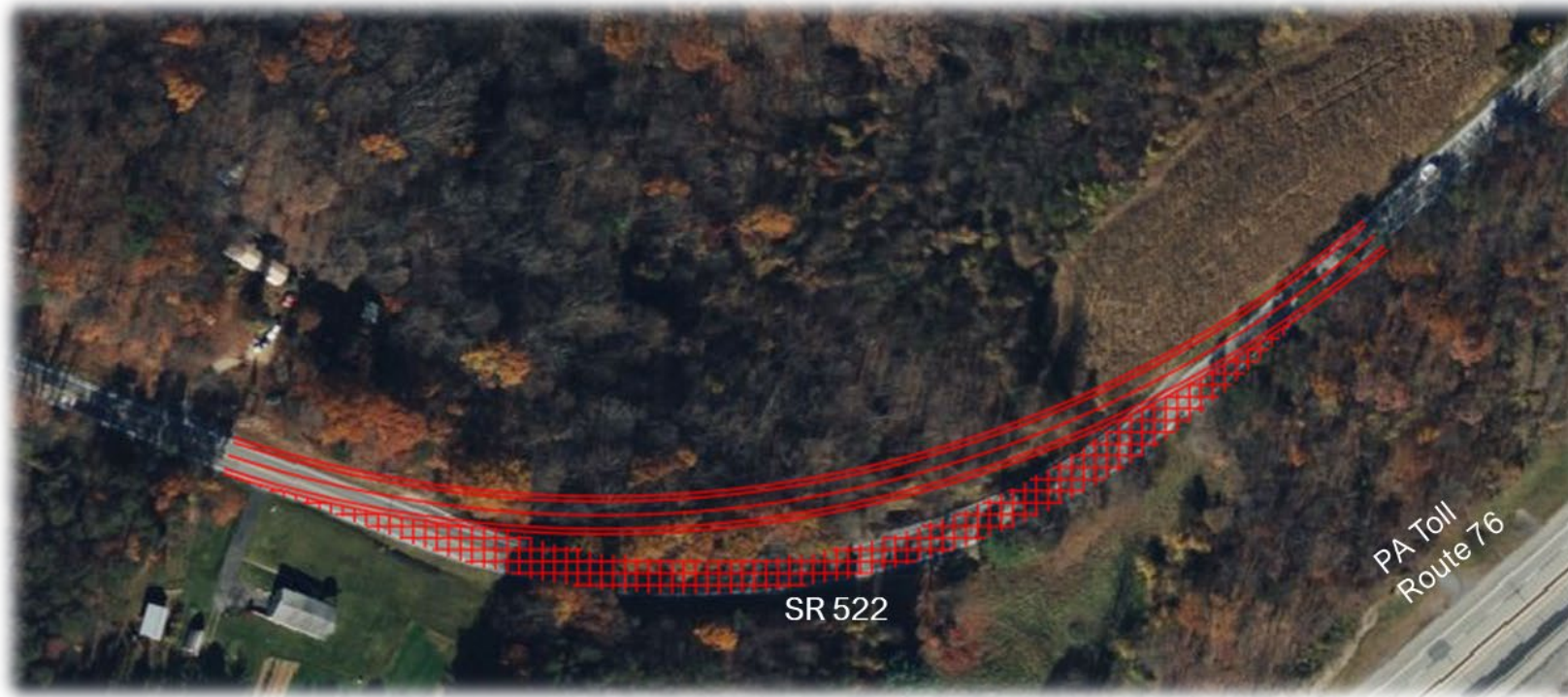


 Street View Location



# US 522 - PA 35 / SHADE GAP TO PA TURNPIKE STUDY

- Long-term project
  - Reconstruct SR 522 to flatten the existing geometry and improve superelevation through the curve



 Existing Pavement to be Removed

Estimated Construction Cost: \$2,000,000



## Site 6: Burnt Cabins



■ → Street View Location



# US 522 - PA 35 / SHADE GAP TO PA TURNPIKE STUDY

- Mid-term project
  - Realign SR 1010 (Grist Mill Road) to improve turning movements, increase sight distance, and reduce speed onto SR 1010 (Grist Mill Road)



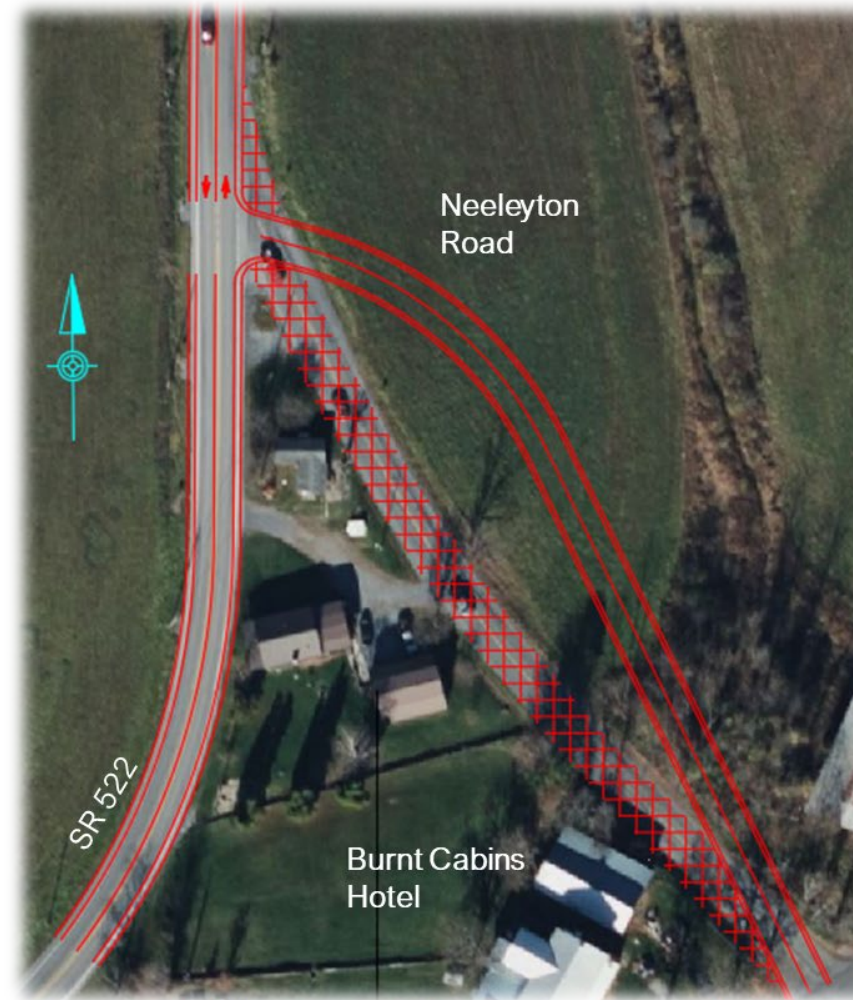
 Existing Pavement to be Removed

Estimated Construction Cost: \$1,500,000



# US 522 - PA 35 / SHADE GAP TO PA TURNPIKE STUDY

- Long-term project
- Relocate SR 1009 (Neelyton Road) to improve turning movements and increase sight distance
  - Connect existing drives to Neelyton Road



 Existing Pavement to be Removed

Estimated Construction Cost: \$1,750,000





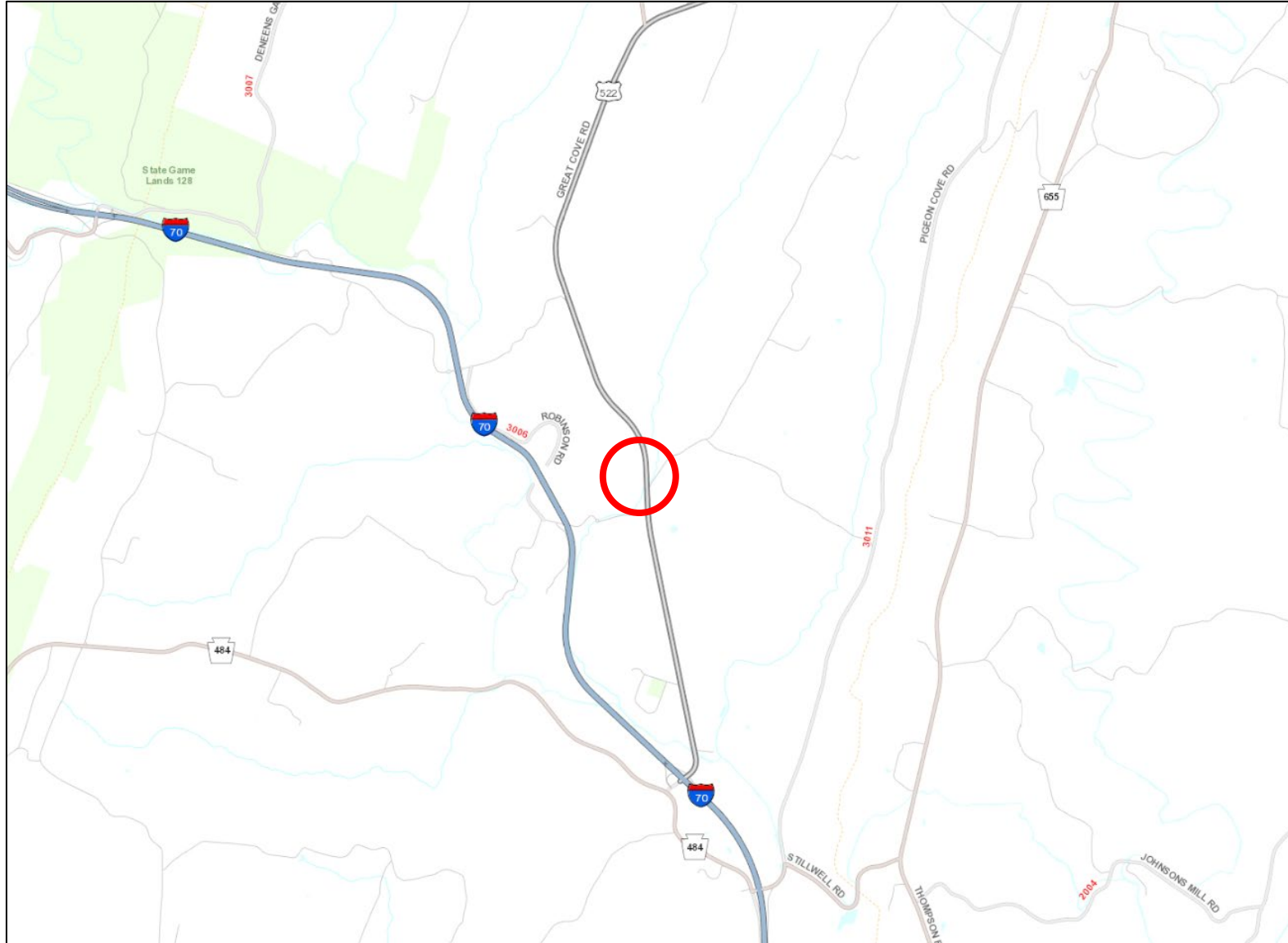
# US 522 WHITE OAK RUN



- **Project Type:** Bridge Replacement w/ T-328 (Bethel Church Rd) & US 522 Intersection Improvements
- **Location:** US 522 over White Oak Run near the intersection of T-328 (Bethel Church Road) in Bethel Township
- **Construction Estimate:** \$1.0 - \$5.0 Million
- **Anticipated Bid Opening:** 4<sup>th</sup> Quarter 2023



# US 522 WHITE OAK RUN BRIDGE





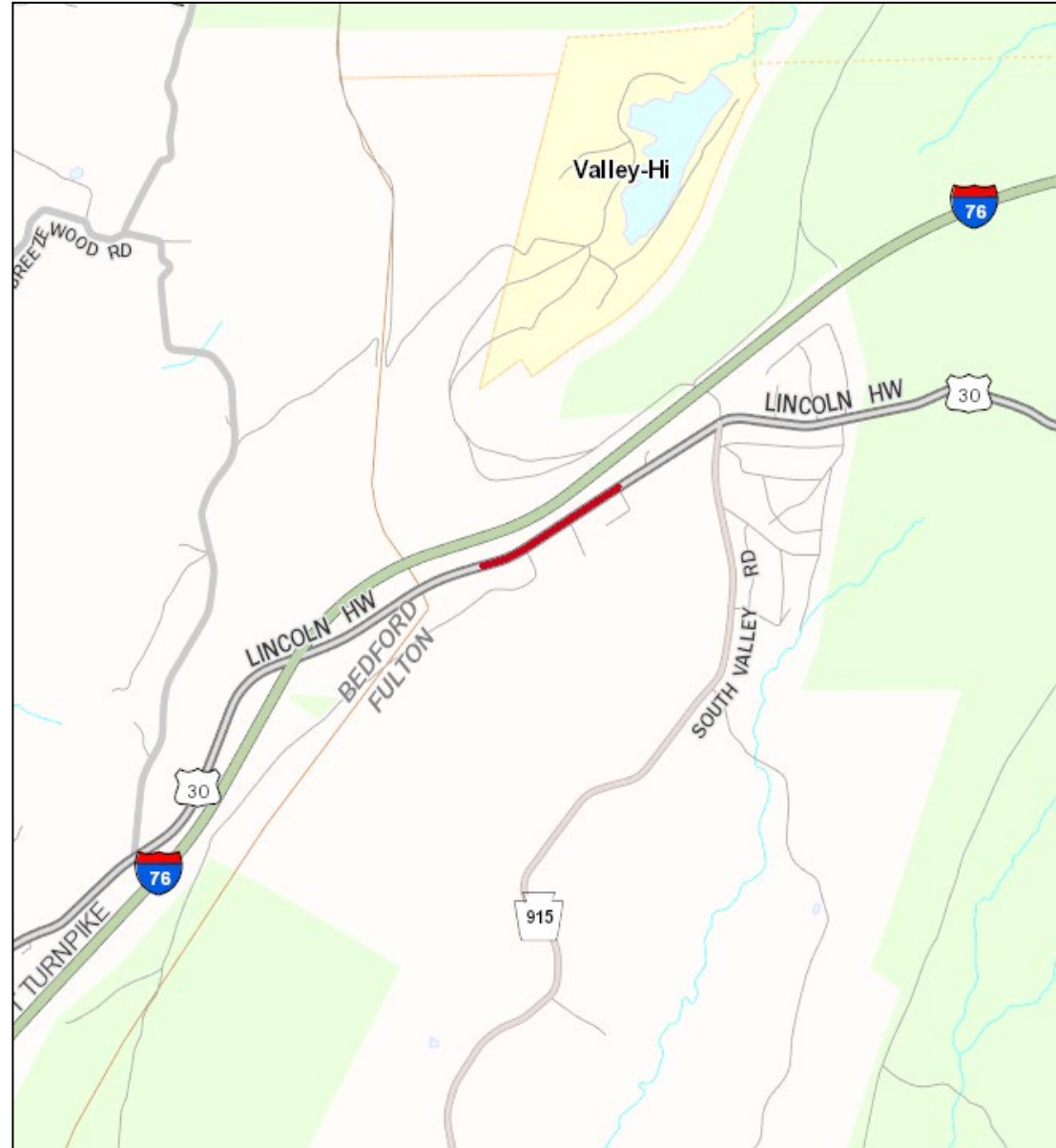
# US 30 TRUCK STUDY TURNAROUND



- **Project Type:** Safety improvement
- **Location:** US 30 (Lincoln Highway) near the intersection of Thunder Rock Road in Brush Creek Township
- **Construction Estimate:** Less than \$1.0 Million
- **Anticipated Bid Opening:** 1<sup>st</sup> Quarter 2025



# US 30 TRUCK TURNAROUND





# US 30 TRUCK TURNAROUND



# **SOUTHERN ALLEGHENIES PLANNING AND DEVELOPMENT COMMISSION**

# 2023 Training Courses

- **Asphalt Roads Common Maintenance Problems**

- **April 26<sup>th</sup>**- 8:00AM to 12:00 PM

- Everett Borough Municipal Building

- 100 Mechanic Street, Everett, PA 15537

- **Seal Coat**

- **June 8<sup>th</sup>**- 8:00AM to 12:00PM

- SAP&DC Office

- 3 Sheraton Drive, Altoona, PA 16601

- **Public Works Safety**

- **June 22<sup>nd</sup>**- 8:00AM to 12:00PM

- Logan Township Municipal Building

- 100 Chief Logan Circle, Altoona, PA 16602

- **Principle of Paving**

- **July 13<sup>th</sup>**- 8:00AM to 3:00PM

- Conemaugh Township Municipal Building

- 1120 Tire Hill Road, Johnstown, PA 15905



- **Unpaved & Gravel Roads Common Maintenance Practices**

- **September 11<sup>th</sup>**- 8:00AM to 12:00PM

- Warriors Mark-Franklin Vol. Fire Company

- 4571 Fire House Lane, Warriors Mark, PA 16877

- **Public Works Safety**

- **September 26<sup>th</sup>**- 8:30AM to 12:30PM

- Penn Highlands Community College

- 881 Hills Plaza, Ebensburg, PA 15931

- **Winter Maintenance Planning**

- **October 12<sup>th</sup>**- 8:00AM to 12:00PM

- SAP&DC Office

- 3 Sheraton Drive, Altoona, PA 16601




# LTAP Technical Assistance

- LTAP provides free tech assists to municipalities to trouble shoot specific roadway issues.
- PennDOT LTAP technical experts are available by phone, by e-mail, and in person to help you troubleshoot your specific maintenance and safety problems.
  - Highway Safety:
    - Guiderails/Roadside safety.
    - Speed control, stop signs, and traffic calming.
    - Traffic studies.
    - Signs.
    - Pedestrian safety
  - Infrastructure Management:
    - Pavement management.
    - Drainage
    - Winter management.
    - Posting and bonding.
    - Bridge and culvert.

County	# of Tech Assists	Hours Spent	Average Hours
Bedford	2	20	10
Blair	13	109	8.38
Cambria	5	27	5.4
Fulton	1	1	1
Huntingdon	4	25	6.25
Somerset	10	49	4.9
<b>Total</b>	35	231	6.6

# Registering for LTAP

 **pennsylvania**  
DEPARTMENT OF TRANSPORTATION  
LOCAL TECHNICAL ASSISTANCE PROGRAM

Home LTAP Tools Help Sign In

\* = Required Value

### LTAP Tools

- Home
- Current Courses
- Course Info
- Roads Scholar Program
- Create Account
- News Items
- Public Resources and Documents
- About LTAP

### User Account

First Name: \*  Middle Initial:

Last Name: \*  Suffix:

Address: \*

Address2:

City: \*

State: \*  Zip: \*

Job Title:

Company:

County:  Phone: \*

Municipality: \*

Mobile:  Fax:

Email: \*  **Not a valid email address**



Re-enter Email: \*

UserName: \*  Mother's Maiden Name: \*

For password security and forgotten password hint

Password: \*  Re-enter Password: \*

Program Details:

Program Name	Is Student
ROAD SCHOLAR ADMINISTRATIVE	<input type="checkbox"/> 
ROADS SCHOLAR 1	<input type="checkbox"/>
ROADS SCHOLAR 2	<input type="checkbox"/>
ROADS SCHOLAR POLICE	<input type="checkbox"/> 

For any help creating an account or  
registering contact me:

Email: [mbjorkman@sapdc.org](mailto:mbjorkman@sapdc.org)

Phone: (814) 949-6553

# THANK YOU!