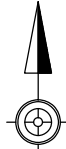
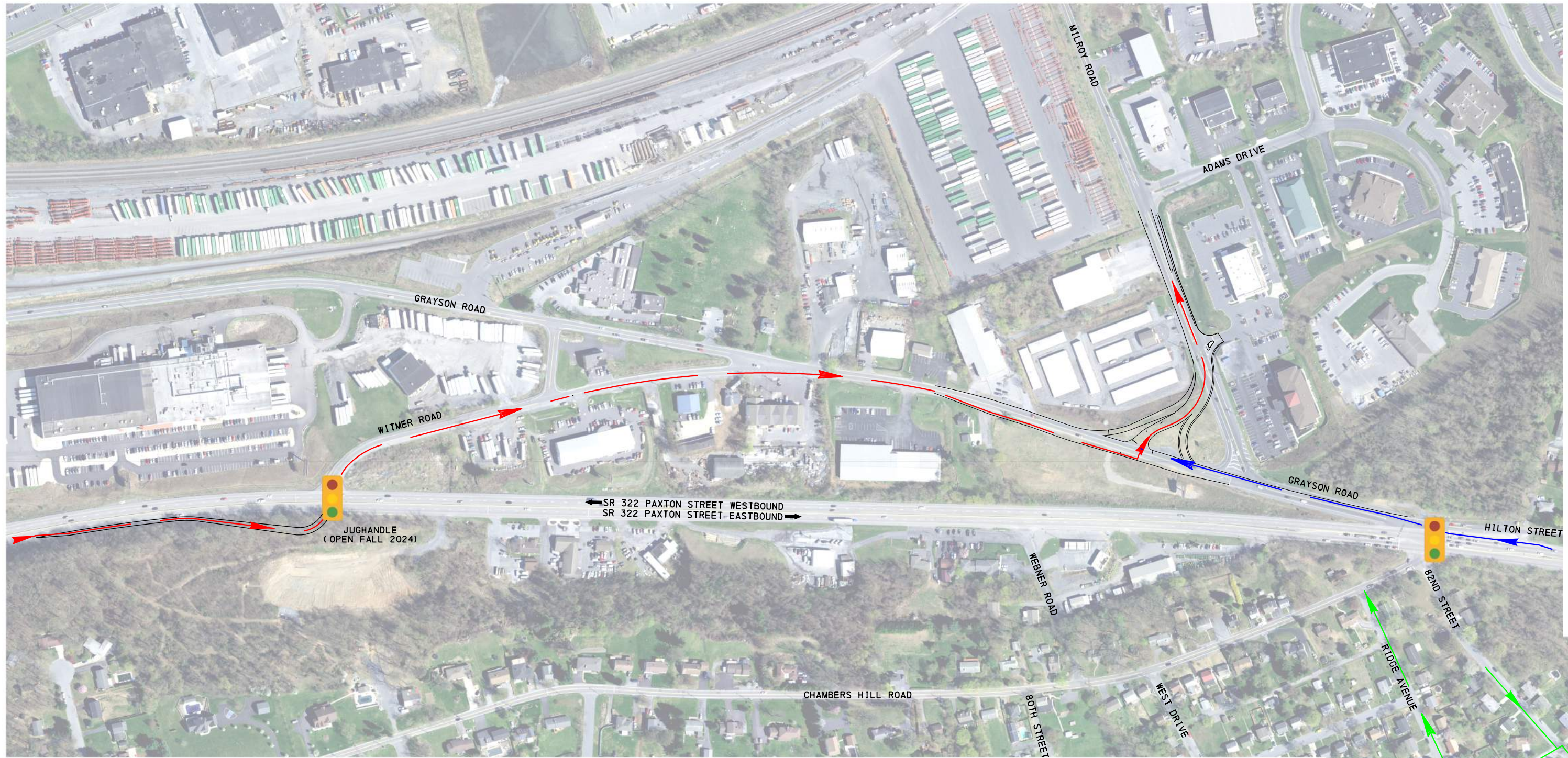
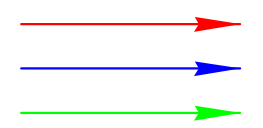


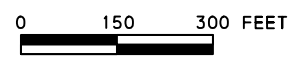
**US 322/CHAMBERS HILL ROAD/GRAYSON ROAD  
INTERSECTION IMPROVEMENTS**  
SWATARA TOWNSHIP, DAUPHIN COUNTY



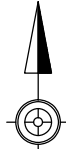
SR 322 PAXTON STREET EASTBOUND TO MILROY ROAD  
SR 322 PAXTON STREET WESTBOUND TO MILROY ROAD  
82ND STREET TO CHAMBERS HILL ROAD



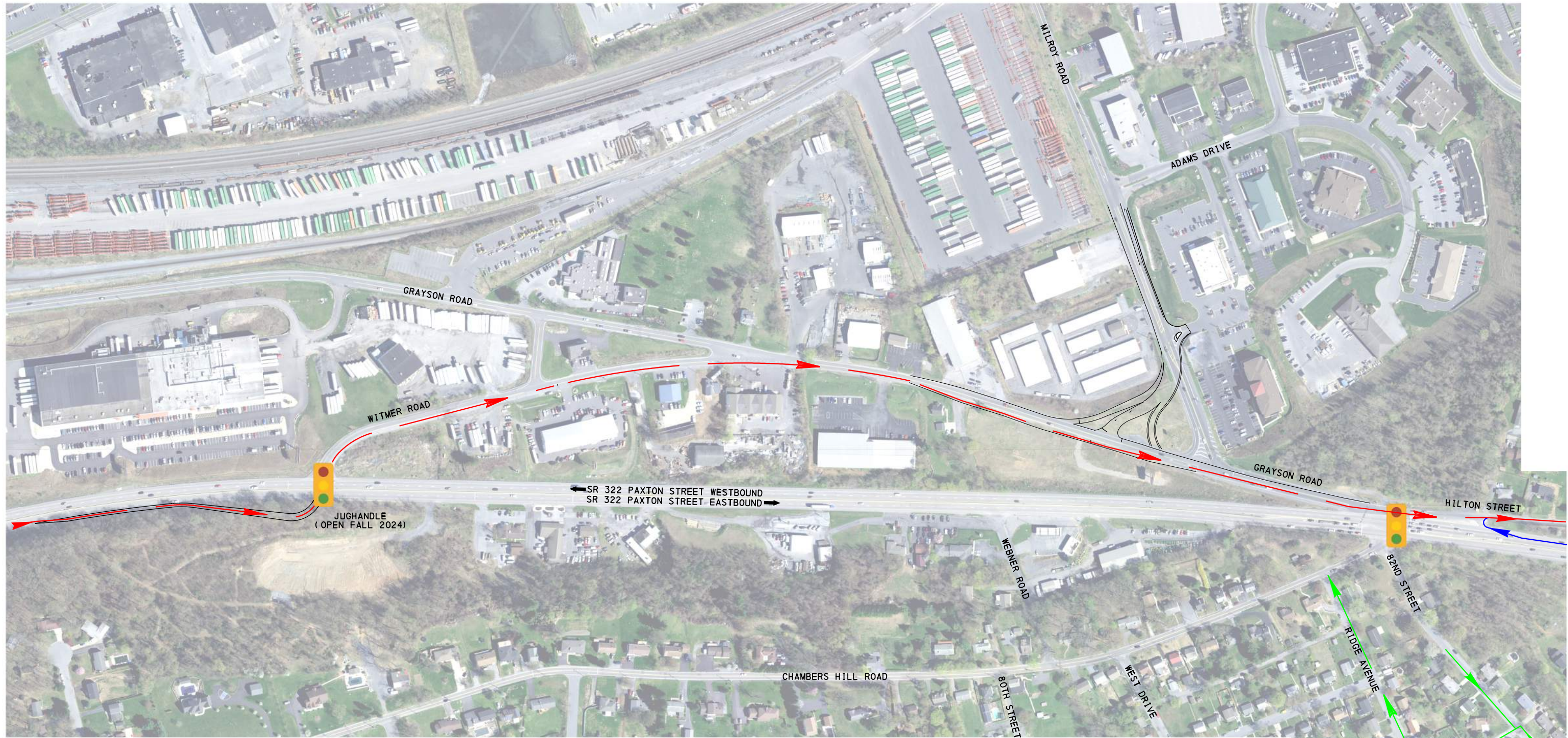
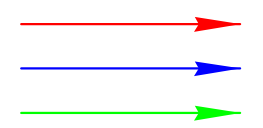
**STAGE 2 - MILROY ROAD + 82ND STREET DETOURS**



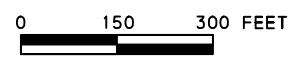
**US 322/CHAMBERS HILL ROAD/GRAYSON ROAD  
INTERSECTION IMPROVEMENTS**  
SWATARA TOWNSHIP, DAUPHIN COUNTY



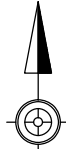
SR 322 PAXTON STREET EASTBOUND TO MILROY ROAD  
SR 322 PAXTON STREET WESTBOUND TO MILROY ROAD  
82ND STREET TO CHAMBERS HILL ROAD



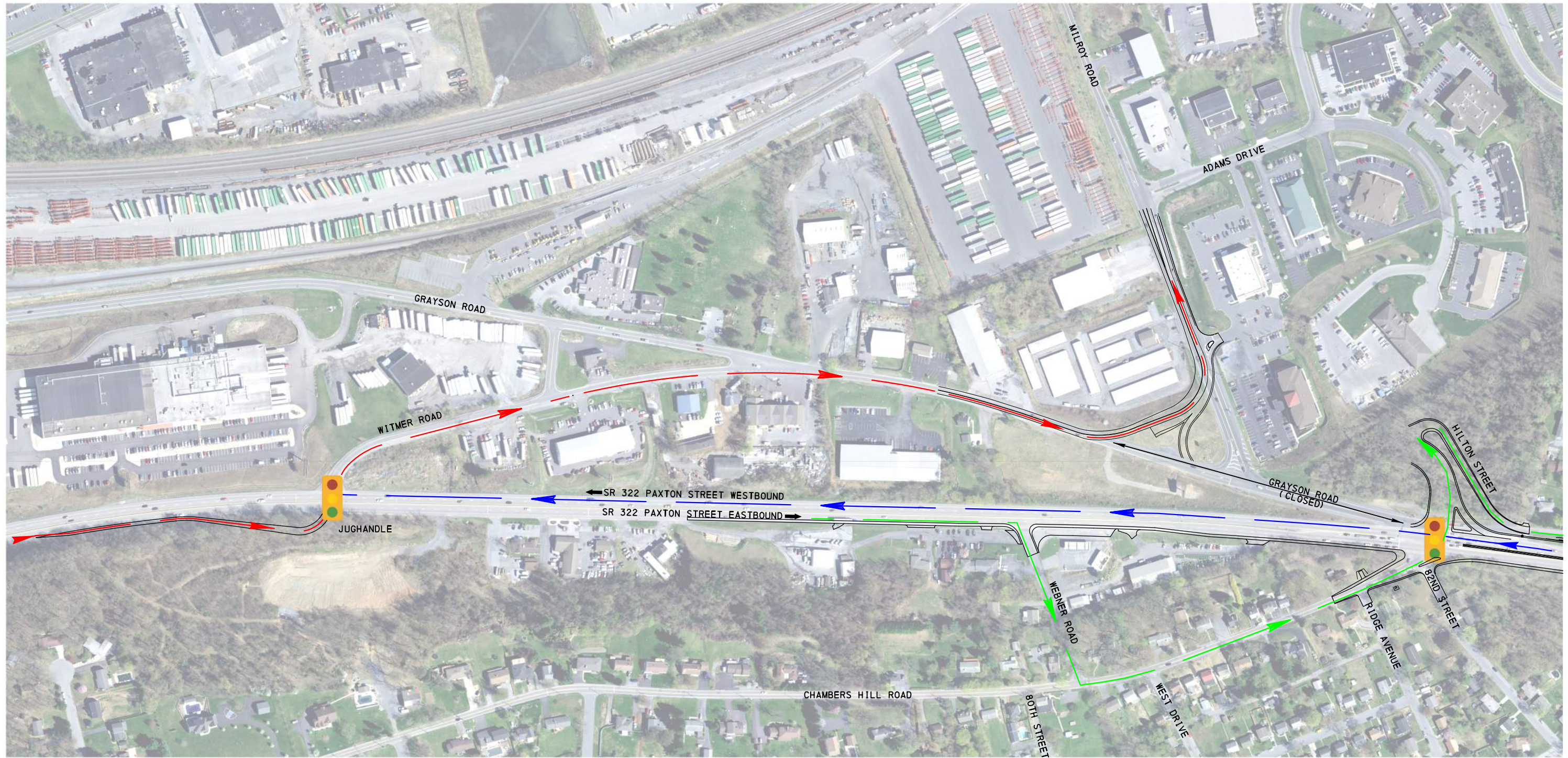
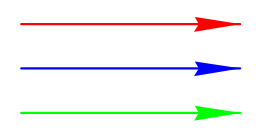
**STAGE 2 - HILTON + 82ND STREETS DETOURS**



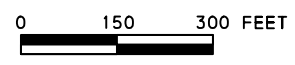
**US 322/CHAMBERS HILL ROAD/GRAYSON ROAD  
INTERSECTION IMPROVEMENTS**  
SWATARA TOWNSHIP, DAUPHIN COUNTY



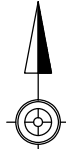
SR 322 PAXTON STREET EASTBOUND TO MILROY ROAD  
 SR 322 PAXTON STREET WESTBOUND TO MILROY ROAD  
 SR 322 PAXTON STREET EASTBOUND TO HILTON STREET



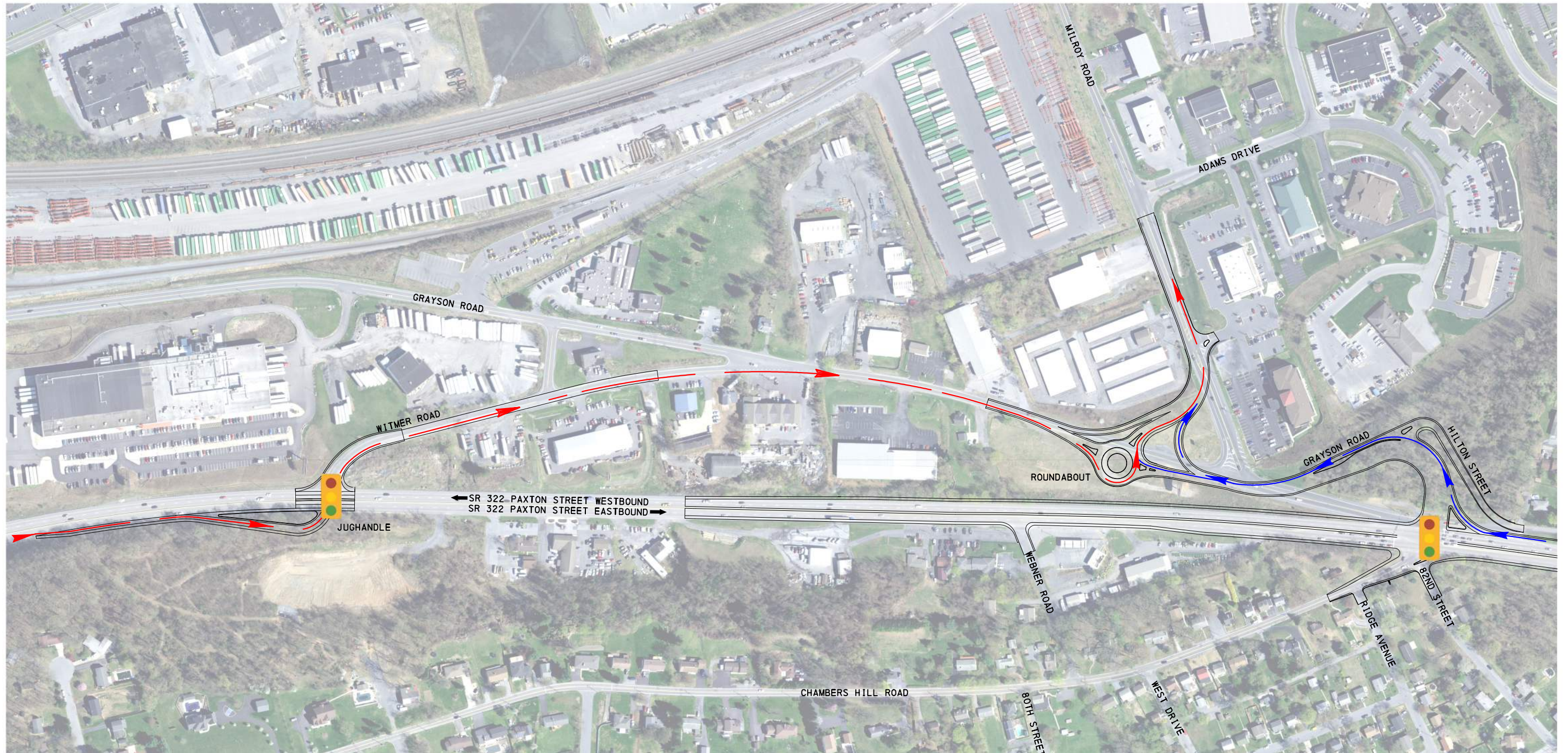
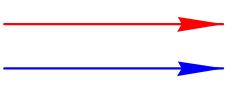
**STAGE 3 - MILROY ROAD + HILTON STREET DETOURS**



**US 322/CHAMBERS HILL ROAD/GRAYSON ROAD  
INTERSECTION IMPROVEMENTS**  
SWATARA TOWNSHIP, DAUPHIN COUNTY



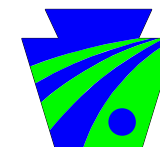
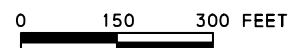
SR 322 PAXTON STREET EASTBOUND TO MILROY ROAD  
SR 322 PAXTON STREET WESTBOUND TO MILROY ROAD



**STAGE 4 - ACCESS TO MILROY ROAD**



Alfred Benesch & Company  
400 One Norwegian Plaza  
Pottsville, Pennsylvania 17901  
570-622-4055



**pennsylvania**  
DEPARTMENT OF TRANSPORTATION