



pennsylvania
DEPARTMENT OF TRANSPORTATION

PENNSYLVANIA NATIONAL ELECTRIC VEHICLE INFRASTRUCTURE (NEVI) PROGRAM

ROUND 1B WEBINAR

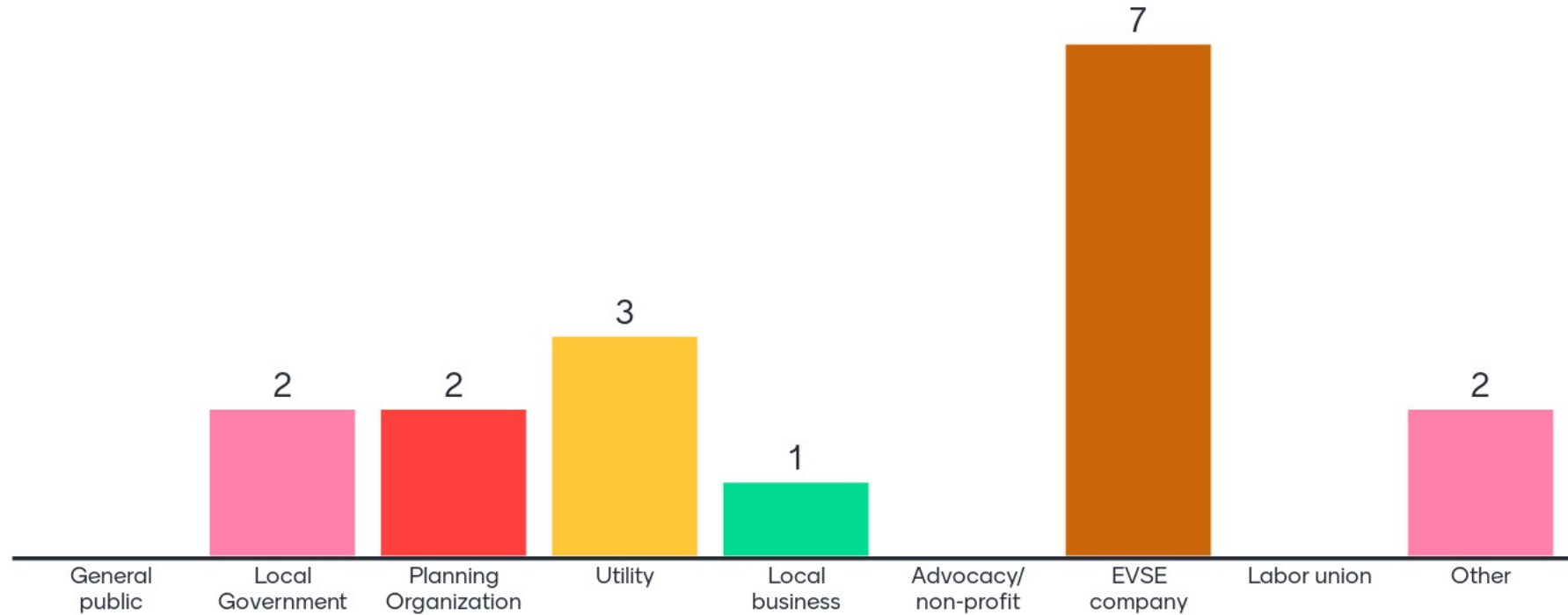
APRIL 30, 2024

INTRODUCTION

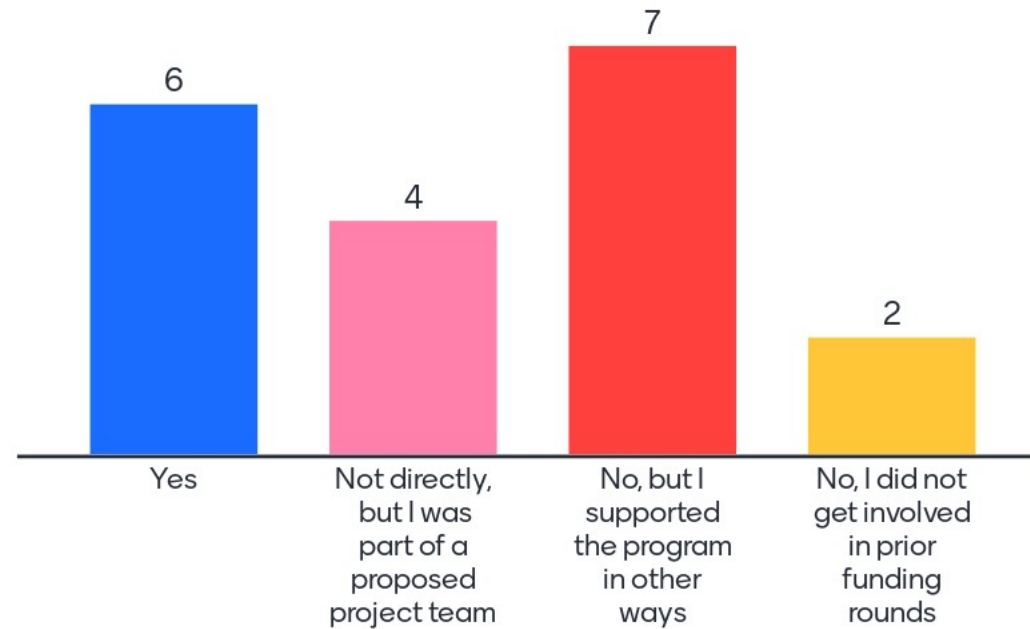
- Today's webinar will be recorded and posted on PennDOT's EV webpage.
- Participant camera and mics are disabled.
- Please feel free to type comments and questions in the chat anytime. “Reactions” are also encouraged.



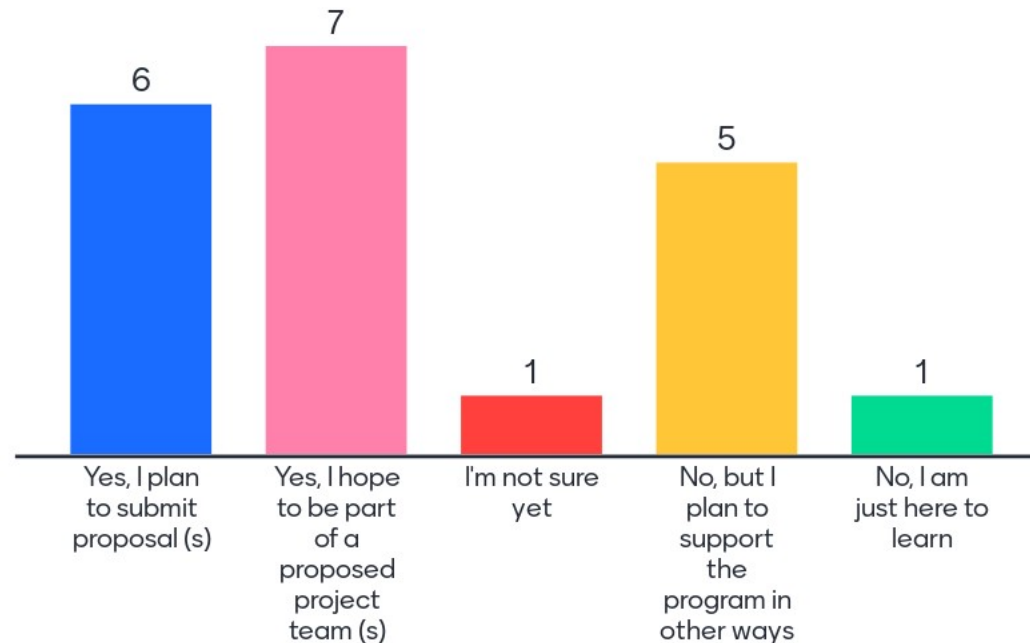
Who do you represent?



Did you apply to PennDOT's NEVI Round 1 or 1A funding opportunities?



Do you plan to pursue PennDOT Round 1B NEVI funds?



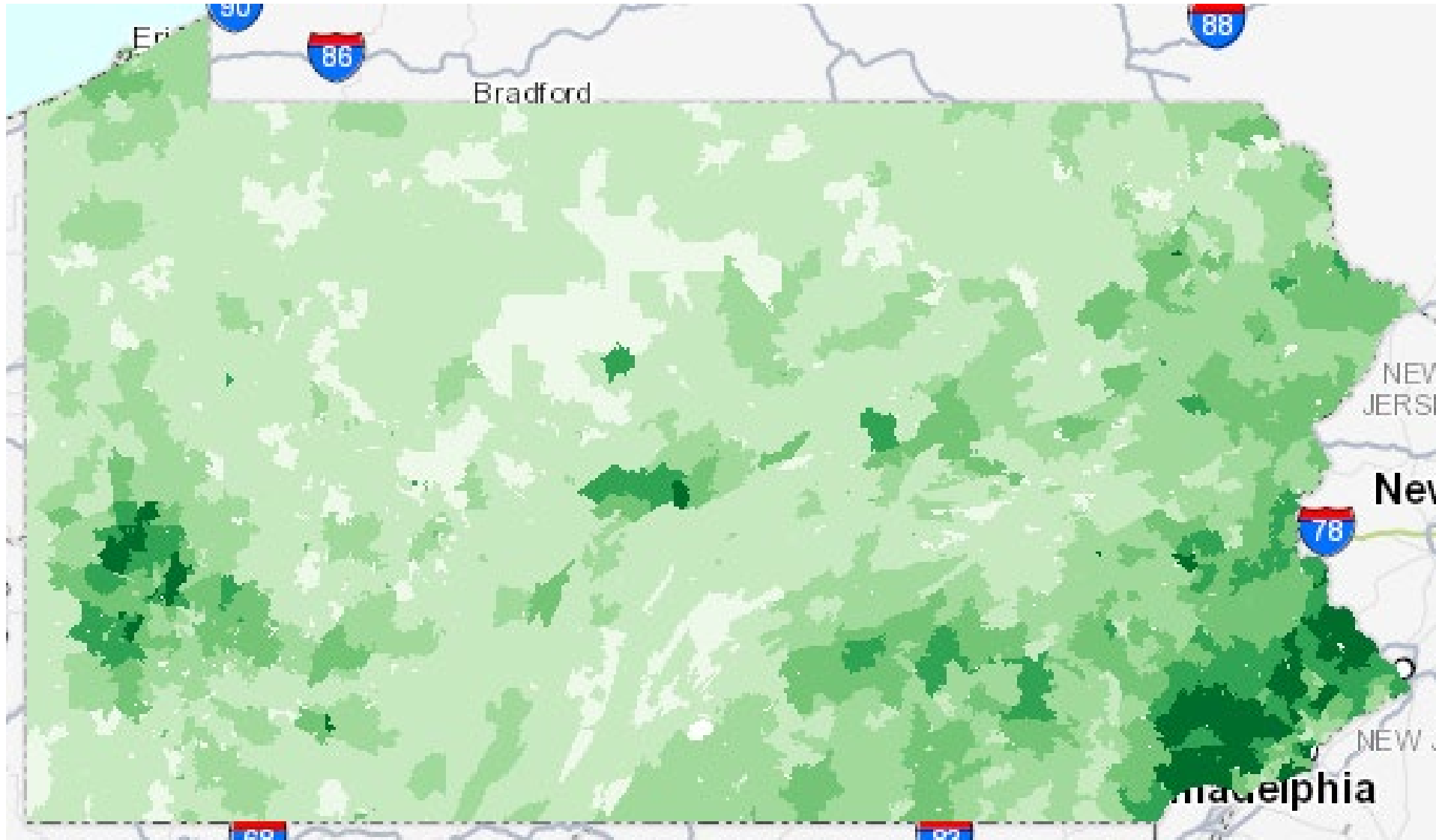
TODAY'S AGENDA

- EV Registrations Update
- National Electric Vehicle Infrastructure (NEVI) Program
 - Summary of Round 1 and Round 1A
 - Round 1B Updates
- Open Questions and Answers



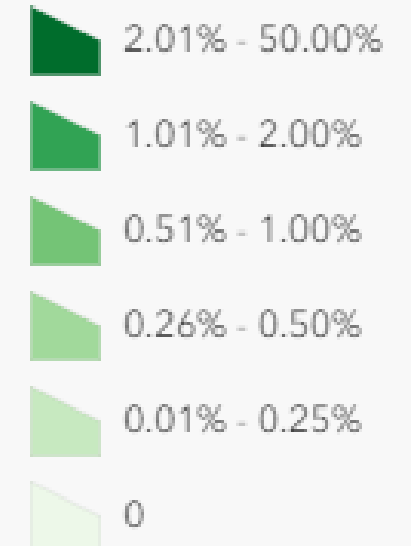
PENNSYLVANIA EV REGISTRATION UPDATE

EV REGISTRATIONS IN PA



Registrations by ZIP Code

Percent Electric Vehicles



[PennDOT EV Registrations Interactive Map](#)



EV REGISTRATIONS IN PA

Fuel type	3/29/2024	Percent Increase since March 7, 2023
BEV	66,104	51.2%
PHEV	39,850	67.2%
HEV	286,154	29.1%
Fuel Cell	1	0.0%
Total	392,109	35.6%

Source: PennDOT registration database



NATIONAL ELECTRIC VEHICLE INFRASTRUCTURE (NEVI)

OVERVIEW OF PA'S NEVI FORMULA PROGRAM



- Provides PA \$171.5 million over 5 years for electric vehicle (EV) infrastructure
- Pennsylvania Round 1 NEVI Program
 - Opened on January 6, 2023, and conditional awards announced on August 14, 2023
- Pennsylvania Round 1A NEVI Program
 - Opened on November 13, 2023, and conditional awards announced on April 4, 2024
- Pennsylvania Round 1B NEVI Program
 - Opened on April 4, 2024, and proposals due on July 10, 2024
- Two years of NEVI state plans have been submitted and approved
- The plan is an evolving document updated annually

YEARS 1-2 CHARGING FOCUS

DC Fast Charging

Public

4 ports

CCS Connectors

At least 150kw power per port
(600kw total)

Within 1-mile of highway, 50 miles
of the next station

How to Charge Your EV



Charge Time



Charging Locations

Level 1

3.5 - 6.5 miles
Per Hour

Residential,
Workplace

Level 2

14 - 35 Miles
Per Hour

Residential,
Workplace,
Destinations

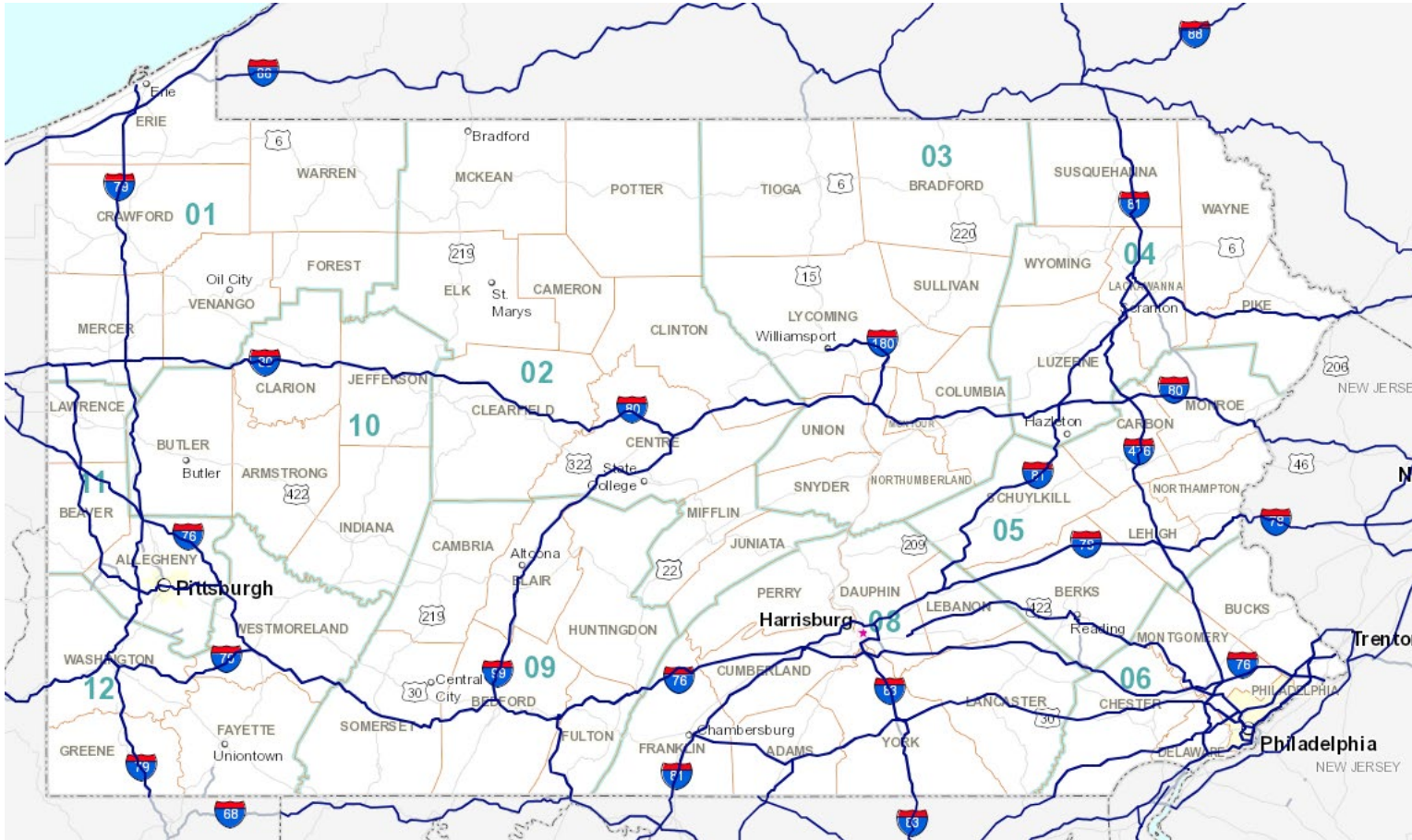
**DC Fast
Charge**

200+ miles
Per Hour

Highways,
Communities,
Destinations



ALTERNATIVE FUEL CORRIDORS



- PennDOT has nominated corridors over 7 rounds - includes interstates and portions of US 30, US 15, Route 1, Route 422, and Interstate 180 - over 1,800 miles of roadway
- NEVI funding must be applied to AFCs until a “**Build-Out**” certification by FHWA

**PENNDOT NEVI ROUND 1
AND ROUND 1A
CONDITIONAL AWARDS**

ROUND 1 AND 1A SELECTION PROCESS

Project selections were based on:

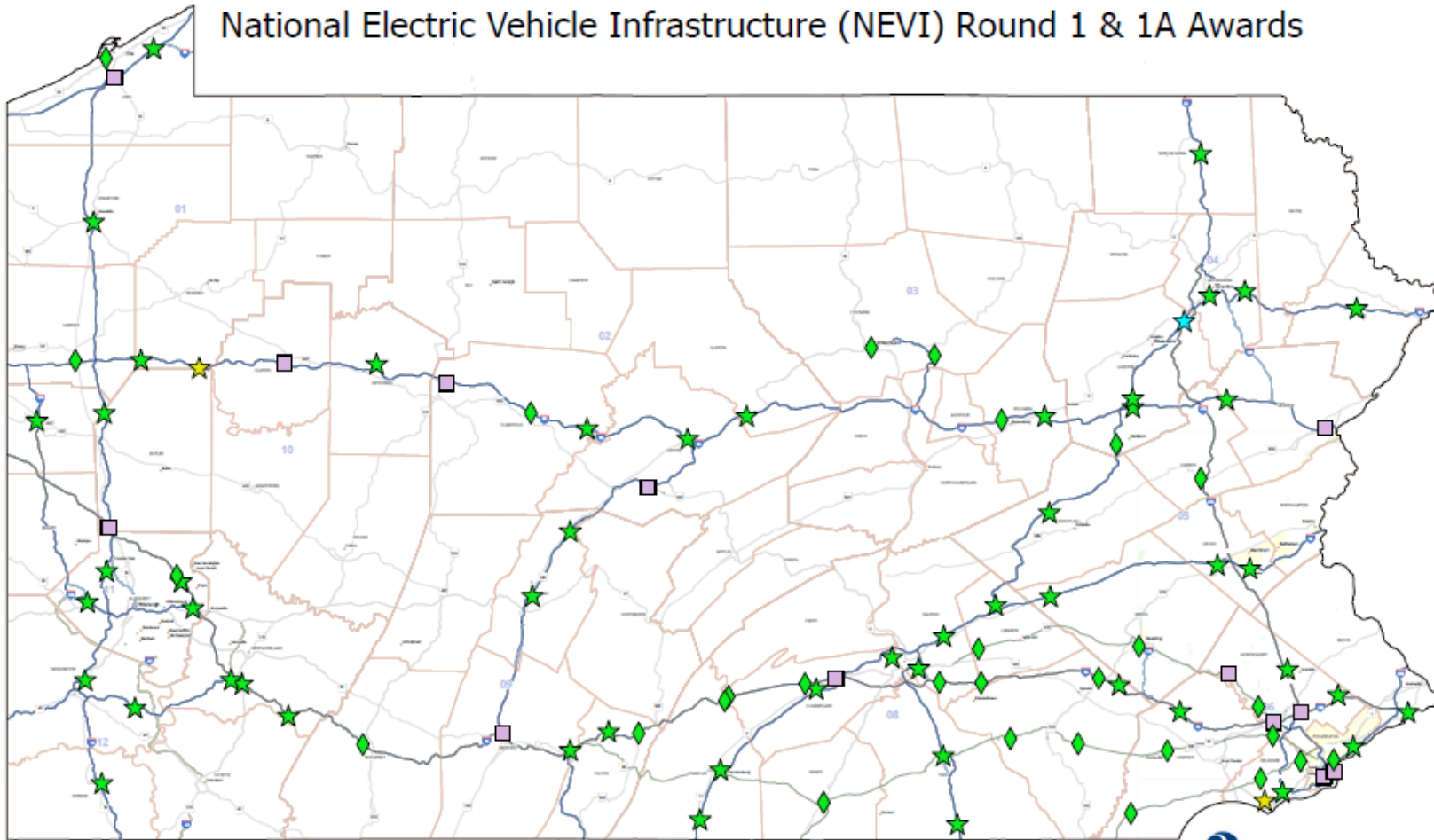
- Build-out AFC network, including logical paths of travel (gaps less than 50 miles and no farther than 1 mile from exit)
- Good customer experience for charging users, including safety
- Consistent reliable charging network
- Variety of funding recipients
- Positive impacts on local economy and workforce opportunities
- Equity/J40 – which includes a welcoming environment safe and accessible for all



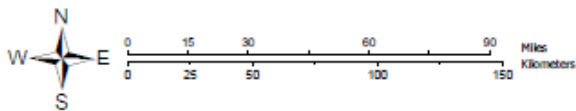
ROUND 1 & ROUND 1A ACTIVE PROJECTS

Electric Vehicle Charging Stations 2024

National Electric Vehicle Infrastructure (NEVI) Round 1 & 1A Awards



- 83 projects within 41 counties
- \$52.9 million
- 36 projects in or within 1/2 mile of a Disadvantaged Community
- Typical Project Timeline 18-24 months



Round 1 Station Status
★ Planned
★ In Progress
★ Operational

Round 1A Station Status
◆ Planned

EV Alternative Fuel Corridors
— Interstate
— US Highway

Other Funding Sources
■ Operational (NEVI Creditable Station)


U.S. Department of Transportation
Federal Highway Administration


pennsylvania
DEPARTMENT OF TRANSPORTATION


pennsylvania
DEPARTMENT OF ENVIRONMENTAL
PROTECTION


pennsylvania
DEPARTMENT OF TRANSPORTATION

PITTSTON PROJECT

3rd State in the Nation with a NEVI Funded Station

- Project opened to the public on December 21, 2023
- Receiving \$610,393 in NEVI funds
- Provided over 200 charging sessions in first month operational
- Additional projects began construction in 2nd quarter 2024



WHAT'S NEXT

- NEVI Round 1B
 - Fill gaps that remain after Round 1 and Round 1A
- Round 2 – Community Buildout
 - Approximately \$100 million available
 - Planning starting now
 - Anticipated to commence in 2026 or 2027
 - Community and stakeholder engagement continues to develop the program.
- EV Charging Reliability and Accessibility Accelerator Program (RAA)
 - Anticipate running a program similar to NEVI
 - There are 293 eligible charging ports at 174 locations in Pennsylvania
 - Anticipate that between 20 and 50 sites will receive an award.
- DOE E-Construction Equipment Grant

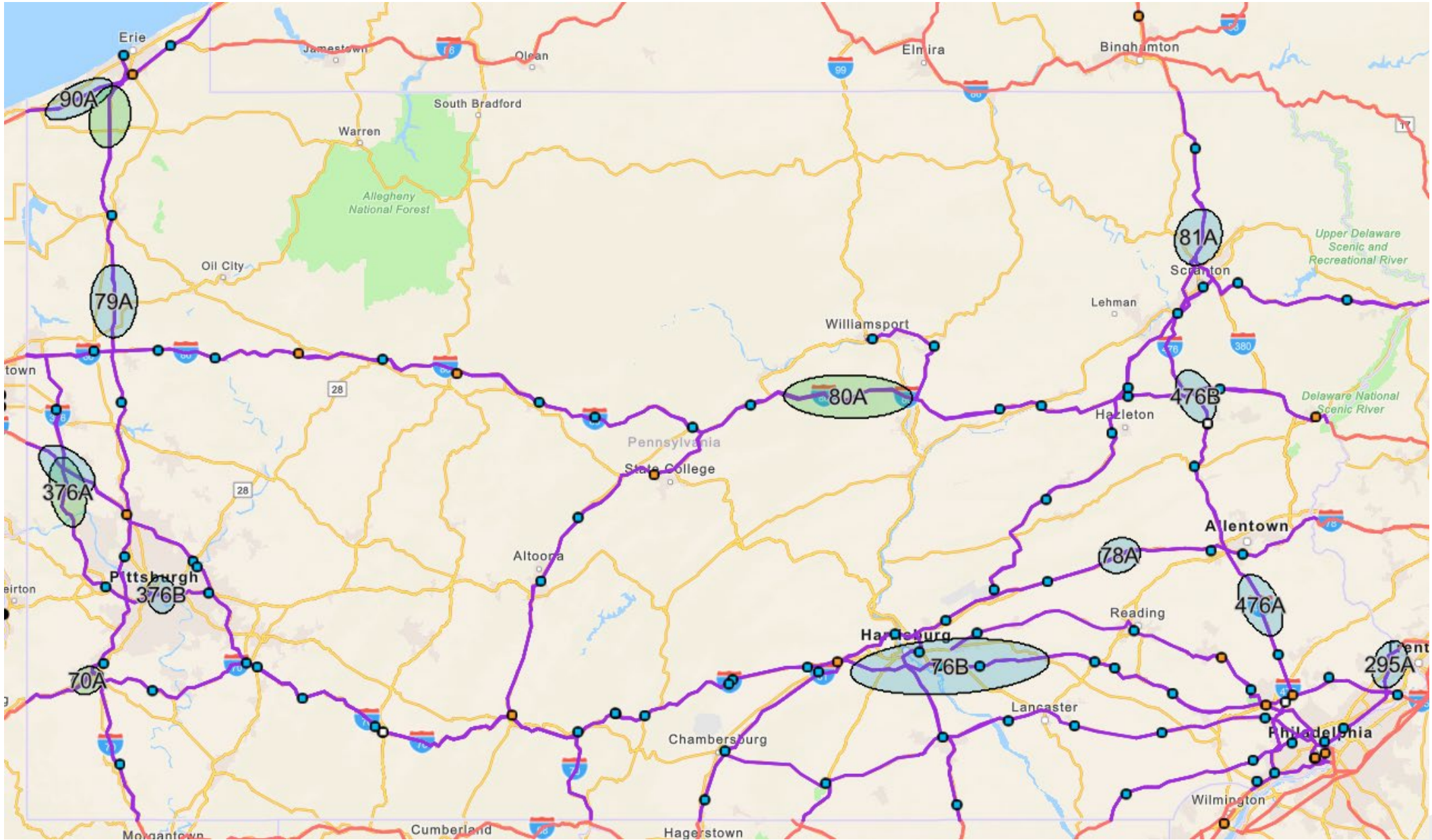
ROUND 1B OVERVIEW

ROUND 1B TIMELINE

Activity	Date
Eligible Locations map released	April 4, 2024
Funding Opportunity released	April 22, 2024
NEVI Round 1B Webinar	April 30, 2024
Deadline to submit technical questions	May 6, 2024
eGrants system opens for online proposals	May 13, 2024
Submit utility form to electric utility	Late-April 2024 to Late-June 2024
Updated Davis-Bacon Wage Act Determinations posted to PennDOT NEVI website	July 1, 2024
Deadline to submit online proposals	July 10, 2024, at 5:00 PM EDT
PennDOT proposal review	July – August 2024
Conditional award notifications	September 2024
PennDOT NEPA process	September – November 2024
Agreement execution	December 2024 – January 2025



ROUND 1B PRIORITY LOCATIONS



ROUND 1B UPDATES

STAYING SIMILAR TO ROUND 1A

- Online submission process
- Utility form
 - Should be submitted to utility at least 15 days prior to proposal deadline
- Minimum equipment requirements
- One proposal per project address
- Detailed scoring rubric included in Funding Opportunity
- Information and graphics to assist Prospective Contractors
 - Graphic showing projects steps from Conditional Award to Agreement execution
 - Graphic showing projects steps from Notice to Proceed to project completion
 - Final Site Design checklist
 - Charging Station Requirements checklist
- NEVI legal Agreement
 - The legal Agreement has few edits as compared to Round 1B



STAYING SIMILAR TO ROUND 1A

- Site Host letter of commitment
 - Each proposal must include a letter of commitment (or signed Site Host Agreement), if the property owner is a different legal entity than the proposer
- Two (2) ADA spaces
 - PennDOT's Design Manual requires a minimum of two (2) ADA parking spaces with "use last" signage, in line with US Access Board recommendations.
- Davis-Bacon compliant wage rates are included in the funding opportunity document
 - Note that these wage rates will be updated 10 days prior to the proposal deadline if the US Department of Labor releases a new version
- Disadvantaged Community scores are based on the precise location of the proposed chargers and can be looked up using the Round 1B Eligible Locations Map



UPDATED FROM ROUND 1A

- Proposal questions have been slightly edited
 - A couple questions were removed and the point values distributed among remaining questions
 - Greater emphasis on EV charging workforce development – up to \$40,000 of federal costs related to these activities do not impact the funding request score



ROUND 1B SCORING RUBRIC

Scoring Category	Points
0. Minimum Requirements	0
1. Team Qualifications and Project Approach	14
2. Candidate Site Information	34
3. Site Readiness and Future Proofing	14
4. Additional Equity and Sustainability	11
5. Additional Safety and Economic Development	7
6. Project Costs	20
7. Additional Information	0
Total	100



ROUND 1B DETAILED RUBRIC

1. Qualifications and Project Approach [14pts]

ID	Element	Description	Score Breakdown Points	Max Points
1.1	Team Qualifications and Experience	<ul style="list-style-type: none">• Organizations involved in Project• Prior installations over past 5yrs• Additional relevant experience	<p>Opts: No prior experience and/or incomplete Project team</p> <p>0.5-8pts: Based on experience and qualifications</p>	8
1.2	Project Approach	<ul style="list-style-type: none">• Project planning• Uptime plan• Schedule and timeline• Risks	<p>Opts: Poor Project approach and/or limited planning</p> <p>0.5-6pts: Based on quality of Project approach elements and realistic complete schedule</p>	6



NEW IN ROUND 1B

- Local Hiring Preference Requirement:
 - At least 50% of the total amount of Davis-Bacon Act covered labor performed during the Project shall be completed by workers whose permanent residential address is located within 50 miles of the Project site. See Funding Opportunity section IV-H for more details.



PENNDOT EV RESOURCES

NEVI ROUND 1B RESOURCES

- [PennDOT NEVI Round 1B Important Consideration for Prospective Contractors](#)
 - Two-page Round 1B summary including important requirements and other details
- [NEVI Round 1B Priority Locations map](#)
 - Map of locations eligible for Round 1B, and Disadvantaged Community scores by location
- [Pennsylvania Utility Coordination Contacts](#)
 - NEVI email contact for all major electric utilities in Pennsylvania
 - Submit utility forms via these email addresses
- [Electric Vehicle Infrastructure Training Program \(EVITP\) Certified Electricians in Pennsylvania](#)
 - List of all EVITP certified electricians in Pennsylvania



OTHER EV RESOURCES

- [Electric Vehicles and Alternative Fuels \(pa.gov\)](#)
- [National Electric Vehicle Infrastructure \(NEVI\) Formula Program \(pa.gov\)](#)
- [EV Mobility Plan \(pa.gov\)](#)
- [Drive Electric PA Coalition](#)
- [Electric Vehicles in PA](#)
- [PA EV Roadmap](#)
- [Alternative Fuels Incentive Grant](#)
- [Driving PA Forward](#)
- [PennDOT NEVI Active Projects Map](#)
- [PennDOT EV Registrations Map](#)

QUESTIONS?

CONTACT INFORMATION

**PENNDOT EV TEAM CONTACT:
RA-PDEVCORRIDORS@PA.GOV**