



# and LONG-RANGE TRANSPORTATION PLANNING

*Better Transportation, Better Communities*

## What is PennDOT Connects?

PennDOT Connects is a policy issued by PennDOT Secretary Leslie S. Richards in 2016. It requires collaborative planning and project development for transportation and community improvement.

## What results can we expect?

- Projects preserve and improve the transportation system while supporting community priorities for growth, preservation, redevelopment, etc.
- Projects are better-defined, are implemented with fewer delays, and produce better results.
- Collaboration across disciplines and among levels of government is ongoing and productive.

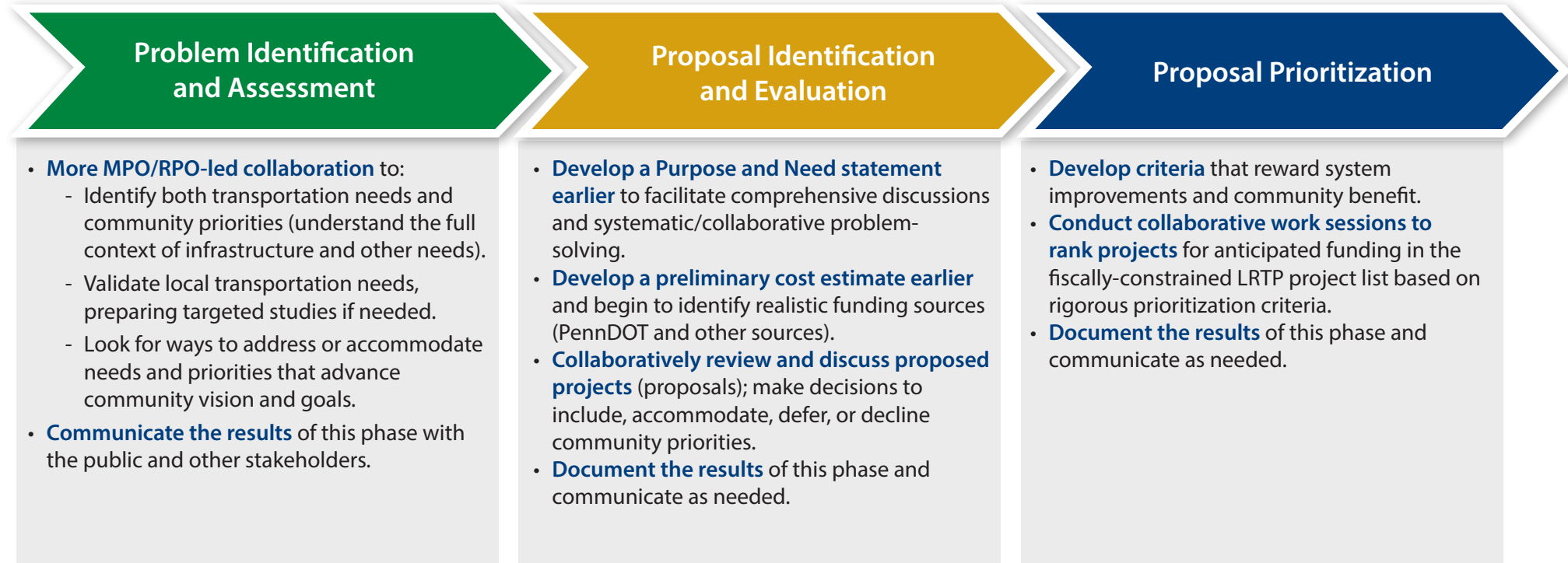
## How does PennDOT Connects shape LRTPs?

- Collaboration is fostered early and sustained:
- Community priorities are compiled and considered along with transportation priorities.
  - Problem-solving considers the bigger picture; project proposals (purpose and need) are developed collaboratively.
  - Collaboration continues during scoping and funding discussions.

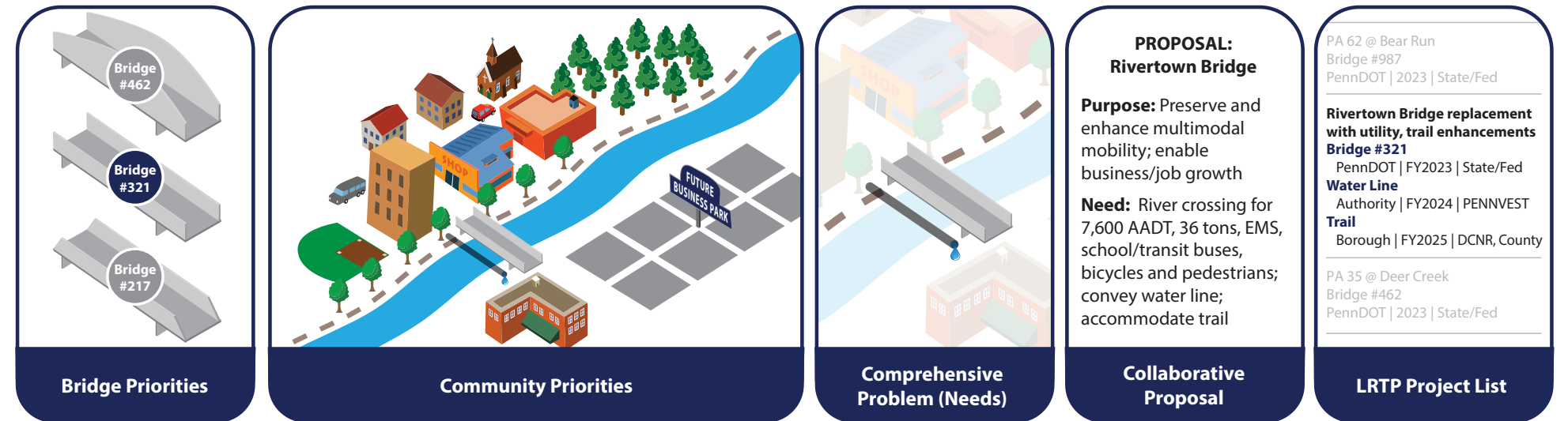
## Who leads collaboration for LRTPs?

Metropolitan planning organizations and rural planning organizations (MPOs and RPOs) take the lead—collaborating with the Districts and communities to meet their goals. Specific collaboration methods used will vary by planning partner.

## What do we do differently during long-range transportation planning?



## EXAMPLE: PennDOT Connects enhances the LRTP process and produces better results for “Rivertown”



Toward reducing SD bridges (a performance-based goal), PennDOT District staff identify several bridges in need of rehabilitation or replacement, including one bridge in the (fictitious) community of Rivertown. The District shares these asset management priorities with the MPO/RPO in advance of LRTP discussions.

Rivertown just adopted a comprehensive plan that focuses economic development strategies on a planned east shore business park and a riverside trail connection to neighboring communities. The business park will require an upgraded public water supply line.

The MPO/RPO has been involved as all three priorities—the bridge improvement, water line upgrade, and trail development—have evolved from problem discussions in recent years to mid-term priorities for the future. The MPO/RPO sees an opportunity to coordinate these projects.

The MPO/RPO drafts a project description with initial purpose and need that outlines the coordination needed by PennDOT and Rivertown. Purpose and need are reviewed when the project moves to the TIP and during (or at) project scoping.

The Rivertown bridge project ranks as a top priority in the LRTP for its multimodal and utility coordination. Timing of external funding sources is noted. Ultimately, coordinating these three improvements achieves broader goals more efficiently.