

# PENNSYLVANIA Airports Economic Impact

## The Pennsylvania Airport System

Pennsylvania's aviation industry continues to provide high quality jobs and spur important local spending by on-airport businesses and agencies. The commonwealth's system of 15 commercial service and 117 general aviation airports connects Pennsylvania businesses and residents to the national and global economy. This system is comprised of a network of airports, airlines, air cargo businesses, corporate flight departments, pri-

vate aircraft owners, and recreational airplane pilots. Manufacturers in the state rely on airports to access markets and to receive supplies. Businesses rely on airports to conduct face-to-face meetings with customers and business associates within the United States and abroad. Leisure travelers use airports to reach recreational and tourist sites and to visit with family and friends.

## Pennsylvania's Total Annual Economic Impacts from Aviation

When all of the impacts of Pennsylvania's system airports are added together, nearly 304,500 total jobs can be traced to the aviation industry. These employees receive more than \$9.2 billion in total payroll, and generate nearly \$23.6 billion in total economic activity. In addition, Pennsylvania's airports provide a number of health, welfare, and safety benefits, the impacts of which are immeasurable. Such services include aerial agricultural spraying, medical transport and evacuation, flight training, law enforcement, wildlife management, military exercises, and search and rescue operations.

### Impact Measures

*Employment* measures the number of full-time equivalent (FTE) jobs related to airport activity, including on-airport

construction. A part-time employee is counted as half a full-time employee.

*Payroll* measures the total annual wages and benefits paid to all workers whose salaries are directly attributable to airport activity.

*Economic Activity (Output)* measures the value of goods and services related to airports in Pennsylvania. The output of on-airport businesses is typically assumed to be the sum of annual gross sales and average annual capital expenditures.

**Total Jobs – 304,464**

**Total Payroll – \$9.2 billion**

**Total Output – \$23.6 billion**

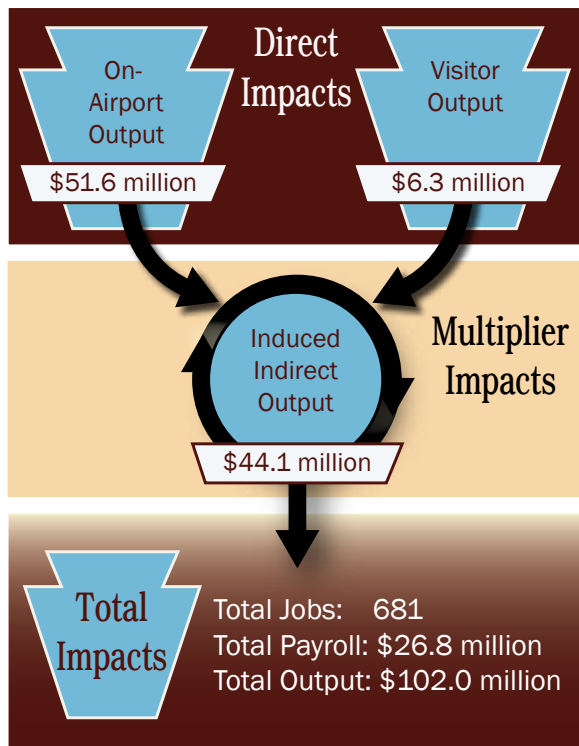
## Study Process

This study, sponsored by the Pennsylvania Department of Transportation, Bureau of Aviation, analyzes the economic impact of Pennsylvania's aviation industry as a whole, as well as the impacts of its individual airports. The study confirms that many people—beyond the immediate environs of each airport—derive significant economic benefits from the daily operation of the airport system. The study also evaluates some of the less-quantifiable impacts linked with aviation, such as health, safety, recreation, education, and overall community strength.

A detailed modeling effort was undertaken to quantify the economic impacts of on-airport activities (airlines, fixed base operators, flight schools, corporate flight departments, government, and various other business). Also quantified were the impacts derived from the expenditures of visitors who arrive via scheduled service and general aviation aircraft. These on-airport impacts and visitor expenditures support additional economic activity throughout Pennsylvania.

As initial waves of activities associated with the airport system are released into Pennsylvania's economy, successive waves of employment, payroll, and economic benefit occur. These additional benefits are measured using sector-specific employment, payroll, and economic impact multipliers.

# Economic Impact of Reading Regional Airport



Source: Wilbur Smith Associates

## Impact Types

**Direct Impacts** include both direct impacts related to on-airport businesses and government agencies, and off-airport impacts, which are usually attributable to visitor spending.

**Multiplier Impacts** are comprised of indirect and induced impacts. These impacts are attributed to employees spending their earnings at local businesses, and the on-airport businesses purchasing goods and services locally. This re-circulation is commonly referred to as the “multiplier effect.”

**Total Impacts** are the combination of all direct, indirect, and induced impacts.



## Qualitative Benefits

Reading Regional Airport is located about three miles northeast of the City of Reading. The airport is accessible via U.S. 22.

Reading Regional Airport is classified as an Advanced airport by the Pennsylvania Bureau of Aviation. The airport has approximately 120 based aircraft and experiences nearly 100,000 operations each year. The primary runway, Runway 13/31, is 6,350 feet long by 150 feet wide, and is outfitted with high intensity runway lighting (HIRL). Runway 18/36 is 5,151 feet long by 150 feet wide and outfitted with high intensity runway lighting (HIRL). The airfield is supported by an air traffic control tower (ATCT) and two precision approaches (ILS RWY 36 and ILS RWY 13).

Reading Regional Airport serves the general aviation needs of the local community and surrounding region. With its volume of service and more than 40 on-site business tenants, Reading Regional Airport is among the busiest general aviation airports in Pennsylvania. The airport is served by two fixed base operators: Reading Jet Center and Millennium Aviation. The FBOs, together with the airport’s numerous other businesses, ensure that Reading Regional Airport offers a full spectrum of general aviation services. These include but are not limited to fueling, oxygen, aircraft parking and storage, and flight instruction. Both FBOs also maintain state-of-the-art terminal facilities. Other businesses at Reading Regional Airport include car rental agencies, restaurants, hotels, and charter companies.

Corporate flights are a daily activity at Reading Regional Airport. The following are but a few companies that utilize the airport regularly: Southwest Airlines/Boscov’s Travel Center, Loomis Insurance, and Penske Jet Inc.

Outside of corporate flights, the most common daily activities at Reading Regional Airport are recreational flying, flight training, touch-and-go operations, military exercises, and emergency medical flights. Other frequent activities include utility inspections, aerial sightseeing, and operations by the Civil Air Patrol. In addition, the Pennsylvania State Police Aviation Division base aircraft at the airport. The airport is also home to the Mid-Atlantic Air Museum, which restores historic military, classic airline aircraft, and other rare aircraft.

The airport is the site of several community and business events. The most prominent is the annual Christmas in the Air event, held each December. Aviation Safety Seminars are also held at the airport.