

State College Area Connector Planning and Environmental Linkage Study


The Pennsylvania Department of Transportation (PennDOT), in cooperation with the Federal Highway Administration (FHWA), is initiating a State College Area Connector Planning and Environmental Linkage (PEL) Study in southern Centre County.

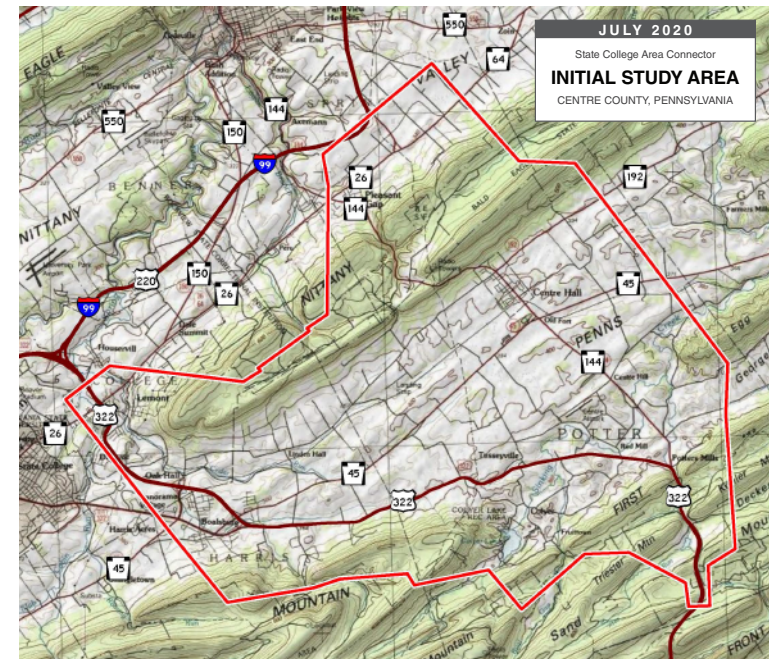
Meeting Purpose: is to introduce the State College Area Connector Study, review and comment on the collected environmental and engineering data, as well as the traffic analysis, and provide comments on the identified transportation needs for the study area.

October Virtual Public Meeting Agenda



- ▶ Transportation Development Process
- ▶ Planning and Environmental Linkage (PEL) Study
- ▶ Environmental Setting
- ▶ Transportation and Engineering Setting
- ▶ Study Purpose and Need
- ▶ Meeting Closure




What is a PEL Study?

 The PEL Study process is a high-level, early-planning approach to transportation decision making that considers environmental, community, and economic goals early in the planning stage, resulting in projects that can be carried through design and construction. Public and agency involvement is conducted throughout this phase. Overall, the PEL Study helps inform planning decisions, streamline the project delivery process, and can serve as a way for the public to discuss and prioritize transportation issues.



For more information contact:

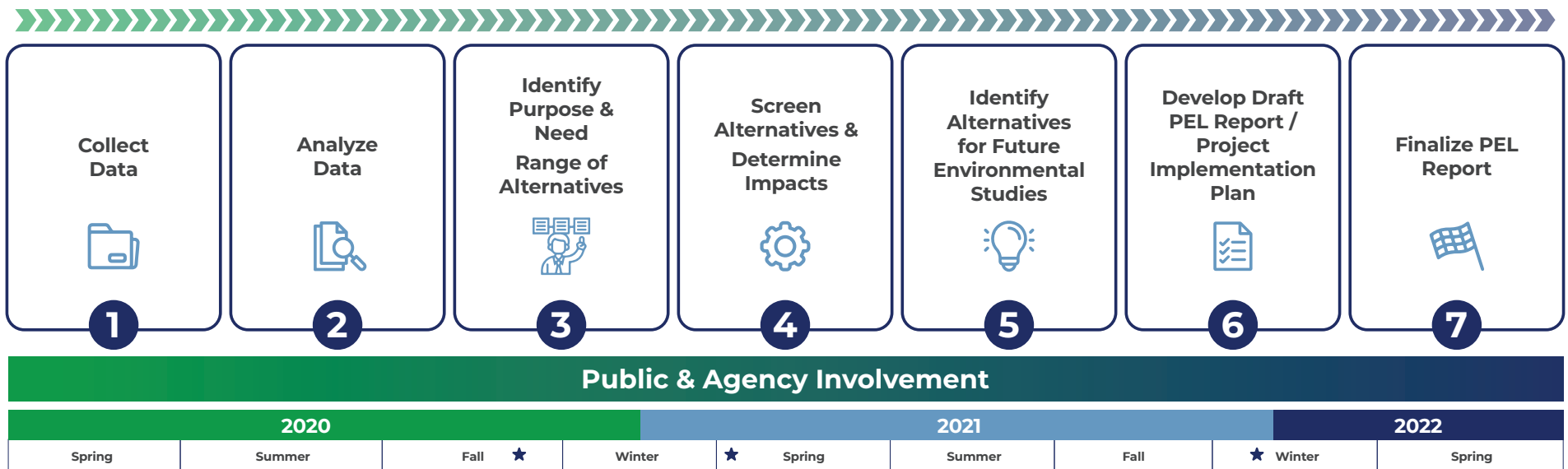
 Dean D. Ball, P.E., Project Manager
 70 PennDOT Drive
 Clearfield PA 16830

 814-765-0439
 deball@pa.gov
 www.penndot.gov/scac

What is the PEL Process?

There are 7 Steps to complete the State College Area Connector Planning and Environmental Linkage Study. **Step 1** collects environmental, engineering, and traffic data to provide a foundation for use in future steps. **Step 2** analyzes the collected data to identify the challenges on the existing transportation system. **Step 3** documents transportation challenges by developing purpose and needs statements that will be used to identify a Range of Alternatives to be further evaluated. **Step 4** analyzes the alternatives to determine the benefits they provide to the transportation system and their associated impacts. **Step 5** identifies alternatives to advance for evaluation in future environmental and engineering studies. **Step 6** documents the results of the PEL study and develops an implementation plan for the future studies or specific projects. **Step 7** finalizes the PEL and receives study concurrence from the Federal Highway Administration.

The State College Area Connector PEL Study is currently at the beginning of Step 3 with the identification of purpose and needs. The Range of Alternatives will soon be identified as part of the study and presented during Step 4 in the spring of 2021. A third public meeting will occur during Step 6 in the winter of 2021 where we anticipate presenting the draft PEL Study results.



★ Anticipated Public Meeting